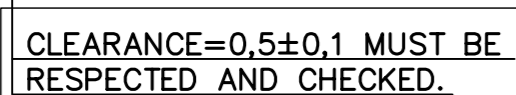


- * 1 TIGHTNESS WITH LOCITITE N°572
- 2 BLOCKING WITH LOCITITE N°245
- 3 DO NOT CLEAN THE COLUMNS (LET THE SPECIAL OIL FILM FROM SELF LUBRICANT METAFRAM RINGS)
- 4 THE NECESSARY TORQUE IS LIMITED TO 7,8mDn. MAXI SO THE ACTUATOR MUST BE ADJUSTED CONSEQUENTLY.
- 5 FOR SECTION--C4 AND MISSING POSITIONS SEE DR.G.N. 0-62-308--50408.
- 6 FOR TECHNICAL SPECIFICATIONS REF. PRODUCT STANDARD NO.BA50073
- 7 PAINT ALL OUTER SURFACES AS PER HY0674162 WITH 1Z1+ZV1 (QUAKER GREY 629)

TPR AS PER CAT "D" OF HY0490563


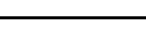

(58)



TAKE CARE OF THE SPECIAL MOUNTING DIRECTION OF THE SCRAPER AT THE ANNUAL VERIFICATION CHANGE THE SCRAPERS IF THE WEAR > 2 MM

DIA 50 TRAPEZOIDAL-PITCH 16
2 STARTS LEFT HAND -ACC.TO
ISO : 2901-2902-2903.

58	LOCTITE 572						0.500		1
57	GREASE NIPPLE			M10X1	HY7744062019	0.001			1
56	SPLIT PIN			DIA 5 - 50 LG	AA71711089207	0.007			2
55	LOCK WASHER			DIA 6	AA7171089		0.008		8
54	SCREW HEX.			M6X25 P8.8	HY7164098042				8
53	SCRAPING 'D' RING				HY7121199041	0.007			1
52	PROTECTING PIPE ASSY.	06230850411			HY7121199				1
51	LOCK NUT M20			M20 P8	HY7151193063	0.036			1
50	NUT HEX. M20			M20 P8	HY7151193				1
49	PARALLEL KEY	06230850407		10X5X30	HY7151198060	0.064			1
48	WASHER	16230850299		PL 10X60X60	HY7151198				1
47	CYLINDRICAL PIN	1-62-308-50299		PIN Ø20X45LG	AA1011819070	0.160			1
46					AA10119				1
45					HY1050265122	0.110			1
44					HY10565				1
ITEM NO.	DESCRIPTION	DRAWING NO.	VAR. NO.	RAW MATERIAL SIZE OR CASTING DRG. NO. OR FORGING DRG. NO.	MATERIAL CODE	NET WT.	GROSS WT.	QUANTITY	

THE FOLLOWING CONDITIONS APPLY EXCEPT OTHERWISE STATED.	TYPE OF PRODUCT		B8D 4760 /4772 TUBE MILLS						
	NAME OF CUSTOMER/PROJECT								
1. REF. TO HY2320261 FOR UNSPECIFIED TOLERANCES.			 SHARIAT HEAVY ELECTRICALS LIMITED HYDERABAD		NAME		SGN.	DATE	NO. OF
2. CHAMFER M/C.D. SHARP EDGES AT 45°.					DRN.	ACS / P.W. / RGT.	23.3.2020	VAR.	
					CHD.	T.M. / RGT.		24.03.02	
					APPD.	SCALE		24.03.02	
3. INTERNAL M/C.D. CORNER RADI - 1 TO 0.7	DEPT. PULV. ENGG.		SCALE 1:2	WEIGHT (KG) 500.00	REF. TO: ASSY DRO		ITEM NO.	NO. OF ITEMS	
	446				8170-B-4760-48-14-002				
4. THE SURFACE ROUGHNESS WHEREVER IT IS NOT SHOWN SHALL BE TAKEN FROM THE SURFACE ROUGHNESS SHOWN OUT SIDE THE BACK SLASH GIVEN OR THE TOP MOST RIGHT CORNER OF THE DRG.	TITLE				DRAWING NO.		REV		
	P.F SHUT-OFF GATE				0-62-308-50407		03		
	PART 1 - (530 x 530)				SHEET NO. 01		NO OF SHEETS 02		