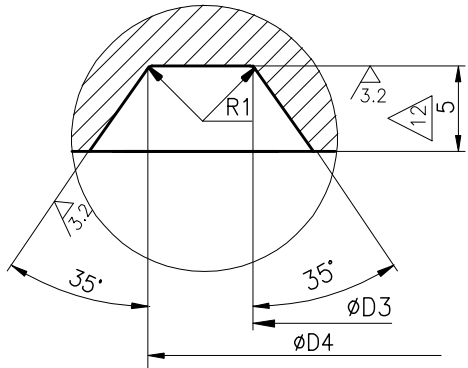


060/1-0000-A-E
DRAWING NO.

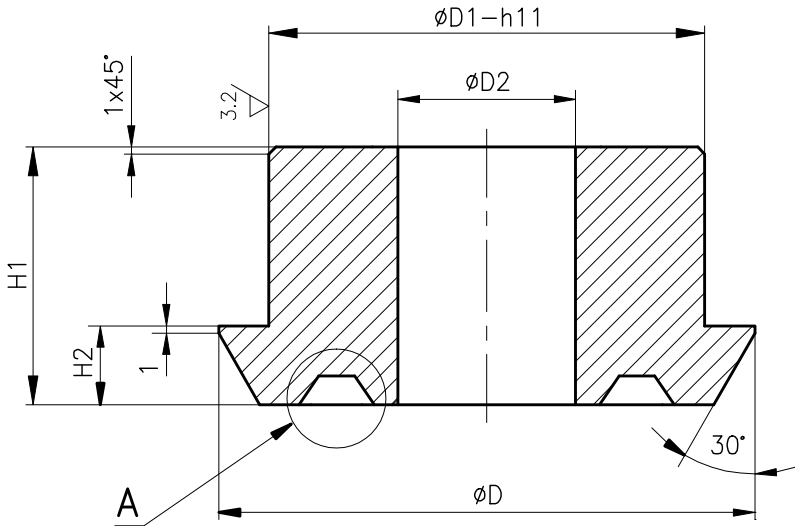
12.5 / 3.2

SL. No.	DRAWING No.	COMP.CODE	RAW MATL. DETAILS			DIMENSIONS								STEM SIZE	NET Wt. (Kg)	APPLICABLE TYPE
			MATL. SPECN.	SUGG.SIZE	SCRAP SORT	Wt. (Kg)	øD	øD1	øD2	øD3	øD4	H1	H2			
01	3-V-N073-17090/4	93 104 019 4000	SA 105, NORMALISED, CERTIFY	ø45X30	10	0.37	40	32.5	—	14	24	21	9	3/4"	0.13	2"—C150
02	3-V-N081-17090/4	93 104 020 4000		ø45X24		0.31	40	32.5	—	14	24	15	9	3/4"	0.11	2"—C300
03	3-V-N025-17090/4	93 104 021 4000		ø53X27		0.47	48	35.7	6	20	30	18	6	7/8"	0.185	3"—C150&300
04	3-V-N033-17090/4	93 104 022 4000		ø55X27		0.50	50	38.9	8	22	32	18	6	1	0.20	4"—C150&300
05	3-V-N001-17090/4	93 104 023 4000		ø63X31		0.76	58	45.2	12	26	36	23	11	1 1/8"	0.29	6"—C150
06	3-V-N017-17090/4	93 104 024 4000		ø63X31		0.76	58	48.4	14	28	38	23	11	1 1/4"	0.26	6"—C300
07	3-V-N009-17090/4	93 104 025 4000		ø67X35		0.97	62	48.4	14	28	38	26	11	1 1/4"	0.37	8"—C150
08	3-V-N089-17090/4	93 104 026 4000		ø67X35		0.97	62	51.6	18	32	42	26	11	1 3/8"	0.35	8"—C300
09	3-V-N057-17090/4	93 104 027 4000		ø75X35		1.21	70	51.6	18	32	42	26	11	1 3/8"	0.44	10"—C150
10	3-V-N041-17090/5	93 104 028 4000		ø75X35		1.21	70	57.9	20	34.7	44.7	26	11	1 1/2"	0.61	12"—C150
11	3-V-N065-17090/5	93 104 029 4000		ø75X35		1.21	70	61.1	22	37.7	47.7	26	11	1 5/8"	0.56	10"—C300
12	3-V-N105-17090/5	93 104 030 4000		ø80X45		1.78	75	61.1	22	37.7	47.7	36	11	1 5/8"	0.66	12"—C300
13	3-V-N224-17090/5	93 105 025 4000		ø90X45		2.3	85	73.8	30	47.3	57.3	38	13	2"	0.83	20"—C150
14	3-V-N350-17090/3	93 106 862 4000		ø85X45		2.0	78	64.3	26	40.9	50.9	36	11	1 3/4"	0.78	16"—C150
15	3-V-N361-17090/3	93 106 878 4000		ø100X47		2.9	95	83.3	38	53.7	63.7	41	13	2 1/4"	1.4	24"—C150
16	3-V-N436-17090/3	93 107 145 4000		ø90X45		2.3	82	67.5	29	44.1	54.1	38	13	1 7/8"	0.92	16"—C300
17	3-V-N437-17090/3	93 107 146 4000		ø100X45		2.8	92	77	35	50.5	60.5	38	13	2 1/8"	1.1	20"—C300
18	3-V-K795-17090/3	93 107 984 4000		ø80X40		1.6	75	61.1	22	37.7	47.7	34	11	1 5/8"	0.64	14"—C150
19	3-V-K796-17090/3	93 107 985 4000		ø85X45		2.1	78	64.3	26	40.9	50.9	39	11	1 3/4"	0.81	16"—C150
20	3-V-K820-17090/3	93 107 986 4000		ø90X40		2.0	85	73.8	30	47.3	57.3	31	13	2"	0.76	20"—C150
21	3-V-K821-17090/3	93 107 987 4000		ø100X60		3.7	95	83.3	38	53.7	63.7	53	13	2 1/4"	1.8	24"—C150
22	3-V-N598-17090/3	93 107 988 4000		ø85X35		1.6	78	64.3	26	40.9	50.9	28	11	1 3/4"	0.6	14"—C300
23	3-V-K797-17090/3	93 107 989 4000		ø90X50		2.5	82	67.5	29	44.1	54.1	41	13	1 7/8"	1.2	16"—C300
24	3-V-K822-17090/3	93 107 990 4000		ø100X60		2.7	92	77	35	50.5	60.5	52	13	2 1/8"	1.8	20"—C300
25	3-V-N834-17090/1	93 109 739 4000		ø105x50		3.4	102	86.5	41	56.8	66.8	40	15	2 3/8"	1.5	26"—C150
26	3-V-N847-17090/1	93 109 740 4000		ø110X50		3.73	105	89.7	44	60.0	70.0	40	15	2 1/2"	1.5	28"—C150
27	3-V-N848-17090/1	93 109 741 4000		ø120X50		4.44	112	96.0	50	66.3	76.3	40	15	2 3/4"	1.7	30"—C150
28	3-V-N827-17090/1	93 109 742 4000		ø125X50		4.82	122	105.6	56	72.7	82.7	40	15	3"	2.0	32"—C150
29	3-V-N846-17090/1	93 109 743 4000		ø145X50		6.5	138	121.4	63	79.1	89.1	40	15	3 1/4"	2.6	36"—C150
30	3-V-NC06-17090/1	93 110 803 4000		ø63X25		0.61	58	45.2	12	26	36	17	7	1 1/8"	0.15	6"—C150
31	3-V-F601-17090/1	93 110 871 4000	SA182F6a,CL3 HT,CERTIFY	ø53X27	40	0.47	48	35.7	6	20	30	18	6	7/8"	0.185	3"—C150&600
32	3-V-NG10-17090	93 201 985 4000	ASTM A182 F22 CL.3 CERTIFY	ø100X45	20	2.8	92	77	35	50.5	60.5	38	13	2 1/8"	1.1	20"—C300

DETAIL-A



ø30-ø50 h11	0 -0.160
ø50-ø80 h11	0 -0.190
ø80-ø120 h11	0 -0.220
ø120-ø180 h11	0 -0.250



REV	DATE	ALTERED	M.SRINIVASAN	REV	DATE	ALTERED	VB
13	17.05.10	CHD & APPD	M.RAJRKUMAR	12	07.04.05	CHD & APPD	MRK
SL.No.32 INCLUDED				DIMENSION 5 WAS 4			
				DCP No.800433			

CAUTION: The information on this document is the property of BHARAT HEAVY ELECTRICALS LTD. It must not be used directly or indirectly in any way detrimental to the interest of the company.

NO OFF	DESCRIPTION	MATL CODE	MATL SPECN	HEAT TREATMENT	SCRAP SORT	NET WT (kg)	GROSS WT (kg)	DRAWING No	ITEM No
TYPE OF PRODUCT OR NAME OF CUSTOMER/PROJECT									
CS									
BHARAT HEAVY ELECTRICALS LTD, UNIT: HIGH PRESSURE BOILER PLANT. TIRUCHIRAPALLI 620014.						DRN	NAME T.R.R.MURTHY	SIGN	DATE 04.07.03
						CHD	P.BOOMINATHAN		04.07.03
						APPD	K.S.RAMAN		04.07.03
DEPT VL		SCALE	WEIGHT (KG).	REFERENCE INFORMATION				NO. OF ITEMS	
CODE 320		NTS.	—	CAD:3V017090					
TITLE						CARD CODE	DRAWING NO.		REV
BACK SEAT ROUGH						U 01	3-V-0000-17090		13