

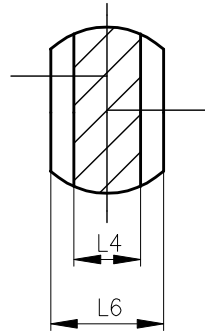
ALL DIMENSIONS ARE IN MILLIMETRES. FOR TOLERANCES OF UNTOLERANCED DIMENSIONS DURING MANUFACTURE REFER RELEVANT QCP / QP.

DRAWING NO. 3-V-0000-17472

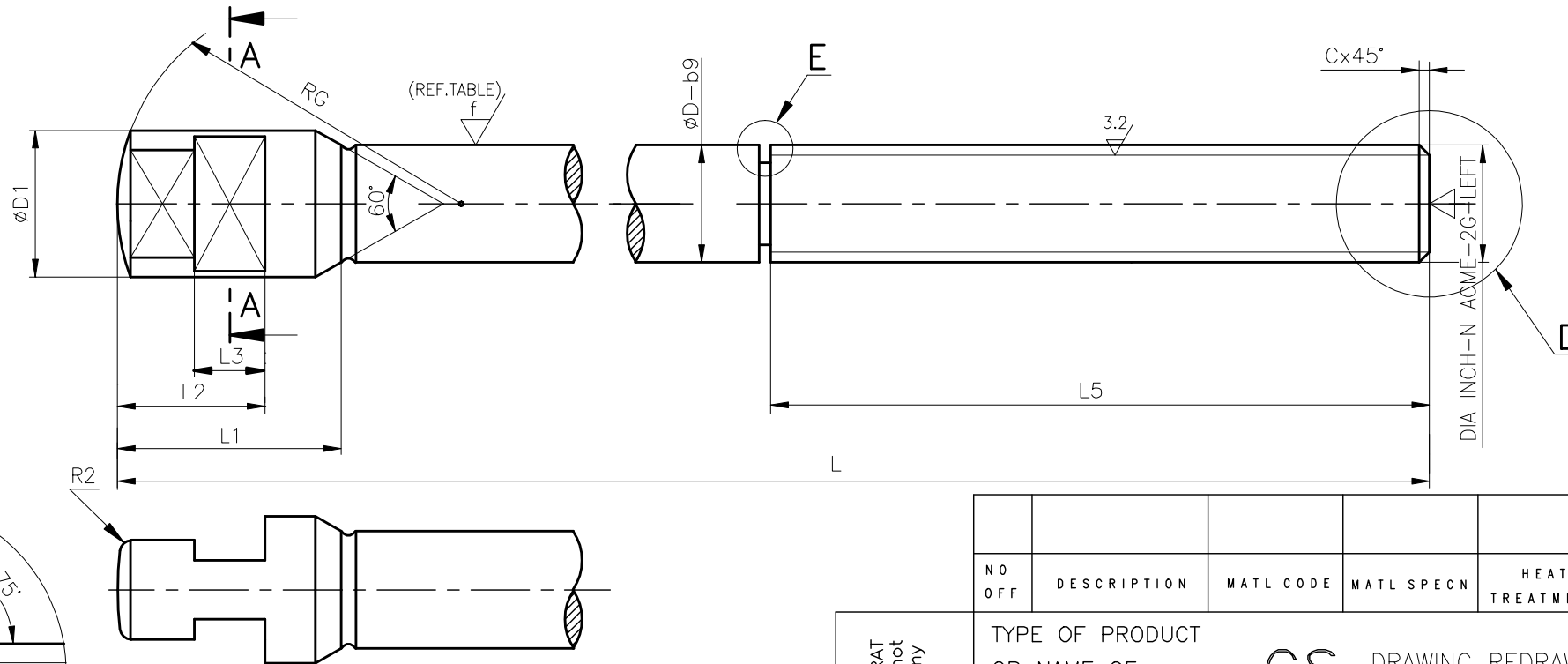
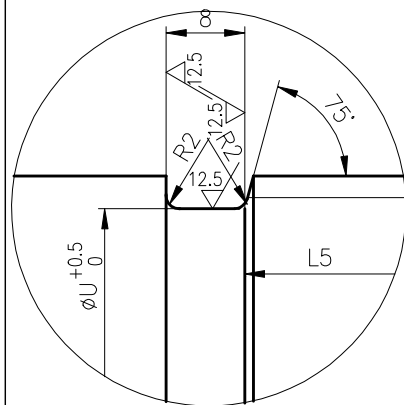
SL. No.	DRG. No.	COMP. CODE	MATL. SPECN	øD-b9	øD1	L	L1	L2	L3	L4	L5	RG	L6	C	øU	SCRAP SORT	FINISHED Wt.(kg)	DIA INCH-N ACME-2G-LEFT	SIZE/RATING	f
1	3-V-N277-17472/02	93 105 750 0000	SA 182-F316	19.050	28	320	31	18.5	10	14.5	150	60	20.0	2	13.6	46	0.72	0.75" -6 ACME	2"-C150 & C300	0.4
2	3-V-N286-17472/03	93 105 751 0000	SH (CERTIFY)	22.225	32	383	41	29.0	16	14.5	155	70	25.5	3	15.9	46	1.29	0.875" -5 ACME	3"-C150	0.4
3	3-V-N282-17472/03	93 105 869 0000	SA182-F6a cl.III HT (CERTIFY)	22.225	32	448	41	29.0	16	14.5	217	70	25.5	3	15.9	40	1.42	0.875" -5 ACME	3"-C300 (MO)FAB	0.4
4	3-V-N429-17472/03	93 106 286 0000		22.225	32	418	41	29.0	16	14.5	186	70	25.5	3	15.9	40	1.35	0.875" -5 ACME	3"-C300 (MO SG)	0.4
5	3-V-N357-17472/03	93 106 450 0000		22.225	32	408	41	29.0	16	14.5	190	70	25.5	3	15.9	40	1.30	0.875" -5 ACME	3"-C150 SG MO	0.4
6	3-V-N537-17472/02	93 106 836 0000		19.050	28	356	31	18.5	10	14.5	164	60	20.0	2	13.6	40	1.28	0.75" -6 ACME	2"-C150 & C300	0.4
7	3-V-N434-17472/02	93 107 968 0000		19.050	28	356	31	18.5	10	14.5	144	60	20.0	2	13.6	40	1.28	0.75" -6 ACME	2"-C150	0.4
8	3-V-N364-17472/03	93 106 923 0000	SA 182-F316 SH (CERTIFY)	22.225	32	392	41	29.0	16	14.5	163	70	25.5	3	15.9	46	1.31	0.875" -5 ACME	3"-C300 HW	0.4
9	3-V-N342-17472/02	93 107 831 0000		19.050	28	356	31	18.5	10	14.5	164	60	20.0	2	13.6	46	1.28	0.75" -6 ACME	2"-C150 & C300	0.4
10	3-V-N472-17472/02	93 107 960 0000		19.050	28	356	31	18.5	10	14.5	144	60	20.0	2	13.6	46	1.28	0.75" -6 ACME	2"-C150	0.4
11	3-V-N338-17472/03	93 107 969 0000		22.225	32	408	41	29.0	16	14.5	190	70	25.5	3	15.9	46	1.31	0.875" -5 ACME	3"-C150	0.4
12	3-V-N373-17472/04	93 108 076 0000		22.225	32	418	41	29.0	16	14.5	186	70	25.5	3	15.9	46	1.35	0.875" -5 ACME	3"-C300	0.4
13	3-V-K993-17472/01	93 109 642 0000	SA182-F6a cl.III	22.225	32	418	41	29.0	16	14.5	186	70	25.5	3	15.9	40	1.35	0.875" -5 ACME	3"-C300 MO (SPF)	0.4
14	3-V-K995-17472/01	93 109 643 0000	HT (CERTIFY)	22.225	32	408	41	29.0	16	14.5	190	70	25.5	3	15.9	40	1.30	0.875" -5 ACME	3"-C150 MO (SPF)	0.4

ABOVE & INCLUDING	b9
ø18-ø30	-0.160
	-0.212
ø30-ø40	-0.172
	-0.232
ø40-ø50	-0.180
	-0.242

SECTION-AA

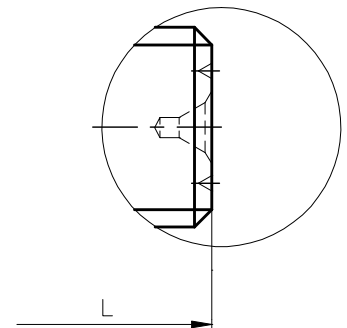


DETAIL-E



DETAIL-D

IDENTIFICATION FOR SA182-F316
MATL. ONLY



NOTE:-

1. HARDNESS 250 TO 300BHN
FOR MATERIAL F6a ONLY

14	26.04.10	ALTERED T.R.RAMAMURTHY	REV	DATE	ALTERED T.R.RAMAMURTHY
		CHD & APPD SSK & MRK	13	01.11.07	CHD & APPD P. BOOMINATHAN
IN SL.No,12, D1=32 WAS D1=28			IN SL.Nos.2,3,4,5,8,11,12,13 & 14 DIMN.L4=14.5 WAS L4=10		
			REFER DCP.800766		

CAUTION: The information on this document is the property of BHARAT HEAVY ELECTRICALS LTD. It must not be used directly or indirectly in any way detrimental to the interest of the company.

NO OFF	DESCRIPTION	MATL CODE	MATL SPECN	HEAT TREATMENT	SCRAP SORT	NET WT (kg)	GROSS WT (kg)	DRAWING No	ITEM No
TYPE OF PRODUCT OR NAME OF CUSTOMER/PROJECT <div style="display: flex; justify-content: space-between; align-items: center;"> <div style="text-align: center;"> <p>CS</p> </div> <div> <p>DRAWING REDRAWN WITH REV. 13 ON 01.11.2007</p> <p>(REFER DCN:CS:0835 & DCP.800223)</p> </div> </div>									
<div style="margin-left: 10px;"> <p>BHARAT HEAVY ELECTRICALS LTD.</p> <p>UNIT: HIGH PRESSURE BOILER PLANT.</p> <p>TIRUCHIRAPALLI_620014.</p> </div>					DRN	NAME S.KANMANI	SIGN	DATE 01.11.07	NO.OF VAR.
					CHD	T.R.RAMAMURTHY		01.11.07	
365-121					APPD	P.BOOMINATHAN		01.11.07	
DEPT VL			SCALE	WEIGHT (KG).	REFERENCE INFORMATIONS				NO. OF ITEMS
CODE 320			NTS.	REF. TABLE	CAD.REF.:C317472				
TITLE <div style="text-align: center; font-size: 2em;">STEM</div>				CARD CODE U 01	DRAWING NO. <div style="font-size: 2em;">3-V-0000-17472</div>				REV <div style="font-size: 2em;">14</div>