

TERMS & CONDITIONS

FOR SUPPLY OF ILLUMINATION EQUIPMENT: FLOOD LIGHT LED TYPE LIGHTING FIXTURE WITH ACCESSORIES FOR TANTRANSCO ARIYALUR PROJECT

1. For any technical clarification, please contact Mr. M Vijay Kumar, Sr. Manager (TBEM); Contact No. 0120-674-8537; e-mail: vijaykumar@bhel.in
2. For any commercial clarification, please contact Ms. Shipra Gupta (TBMM); Contact No.0120- 6748509; e-mail: shipra@bhel.in
3. **Delivery requirement: IMMEDIATE.** However, vendor has to quote their best delivery plan in activity schedule. In case, BHEL's delivery requirement is not met by vendor(s), then a chance may be given to all such vendors to review their quoted delivery schedule in line with BHEL's delivery requirement. However, if vendor fails to meet the requisite delivery plan, then BHEL reserves the right not to consider the offer of such vendor(s).

Sl. NO.	ACTIVITY	ACTIVITY TIME IN WEEKS	REMARKS IF ANY
1	Inputs to vendor by BHEL. Last inputs date will consider	2	BHEL Activity
2	Submission of Documents necessary for getting manufacturing clearance like Drawings, Date sheet etc.	4	Vendor to ensure Delivery completion date mentioned by BHEL
3	Approval of documents/ Manufacturing Clearance from BHEL / Customer *	4	BHEL Time to issue Manufacturing Clearance
4	Manufacturing time	10	Vendor to ensure Delivery completion date mentioned by BHEL
5	Inspection call	2	Vendor to ensure Delivery completion date mentioned by BHEL
6	Customer Inspection & Dispatch Clearance	2	BHEL Time to issue MICC
7	Dispatch	2	Vendor to ensure Delivery completion date mentioned by BHEL

4. SCOPE OF SUPPLY AND BOQ (BIDDER TO SUBMIT UN-PRICED BID FORMAT AND ENCLOSED)

SN	ITEM DESCRIPTIONS	UNIT	QTY	QTY IN GEM
1	SUPPLY- ILLUMINATION EQUIPMENT: FLOOD LIGHT LED TYPE LIGHTING FIXTURE WITH ACCESSORIES	No.	46	1 LOT

5. **Technical specification:** As per reference drawings enclosed in the tender.
6. **Inspection agency** – to be inspected by Customer/BHEL/other agencies authorized by BHEL. MQP approval by Customer/Consultant, inspection by BHEL. Supplier to submit Quality Plan to BHEL for customer approval.
7. **Guarantee Clause** - Applicable as per GeM T&C.

TERMS & CONDITIONS

FOR SUPPLY OF ILLUMINATION EQUIPMENT: FLOOD LIGHT LED TYPE LIGHTING FIXTURE WITH ACCESSORIES FOR TANTRANSCO ARIYALUR PROJECT

8. **Performance BG / Deposit Clause:** Supplier shall arrange to submit Performance BG / Deposit of 10% of contract value on a non-judicial stamp paper of appropriate value along with first invoice or within 60 days from placement of Purchase Order (PO) whichever is earlier. PBG should valid till guarantee period with claim period of 3 months extra over and above guarantee period.

Bidder agrees to submit performance security required for execution of the contract within the time period mentioned. In case of delay in submission of performance security, enhanced performance security which would include interest (SBI rate + 6%) for the delayed period, shall be submitted by the bidder. Further, if performance security is not submitted till such time the first bill becomes due, the amount of performance security due shall be recovered as per terms defined in the NIT / contract, from the bills along with due interest.

9. **Quantity Variation:** Applicable as per GeM T&C, i.e. $\pm 25\%$ of total contract value.

10. **REVERSE AUCTION:** Applicable as per GeM procedure and guidelines.

11. **Make in India (PPP-MII) (Refer clause no: 17 of Addendum of GTC):** This tender is not a global tender and **only class-I** suppliers as defined under the DPIIT order no. P-45021/2/2017-PP (BE-II) dated 04.06.2020 are eligible to bid in this tender. **Bids received from Class-II & Non-Local supplier shall be rejected.** Bidder to specify the percentage of local content as per the format of self-declaration for local content” **endorsed by CA.**

12. **MOP Circular :** APPLICABLE

13. **INTEGRITY PACT:** Not Applicable.

14. **Vendor Approval-** Vendor should be approved with customer as on date of Techno-commercial bid opening. For non-approved vendors “Credentials of vendor like performance certificates, experience certificates for technically cleared vendors. TSGENCO / PGCIL / NTPC approved vendors are preferable. If any other vendor comes through GeM then approval for the same shall be required from end customer”. Price bid of customer approved vendors shall be opened.

15. **BHEL TBG – TERMS OF PAYMENT CLAUSE**

For Supply only in scope of the supplier: 100% of payment after receipt of complete invoice along with documents in 3 sets (original + 2 copies) as follows:

- LR / GR duly endorsed by BHEL Site Official.
- Material Receipt Certificate issued by BHEL Site Official.
- GST Compliant Tax Invoice
- Packing List (Case-wise)
- Copy of Transit Insurance Certificate from underwriters.
- Material Inspection Clearance Certificate (MICC) issued by BHEL Quality Management
- Guarantee Certificate
- Copy of Performance Bank Guarantee (PBG)
- Certificate of acceptance of Type Test Reports issued by BHEL Engineering Management wherever specifically mentioned in the Purchase Order.

16. **All other terms & conditions shall be applicable as per GEM GTC.**
-

TERMS & CONDITIONS

FOR SUPPLY OF ILLUMINATION EQUIPMENT: FLOOD LIGHT LED TYPE LIGHTING FIXTURE WITH ACCESSORIES FOR TANTRANSCO ARIYALUR PROJECT

17. IMPORTANT INSTRUCTION:

- Bidder to mention QUOTED and GST in % against every items in their UN-PRICED BID FORMAT.
- Bidder to sign and stamp this Terms and conditions document and to be attached in bid offer.
- GeM Seller ID- GeM seller ID is mandatory for the bidders and must be mentioned in their offer. In case at the time of submission of offer GeM seller ID is not available with bidder, then successful tenderer should ensure to have GeM Seller ID prior to award of contract. Department of Expenditure (DOE) OM no. 6/9/2020-PPD dated 24.08.2020 may be referred in this regard.

SN	Deviation sheet	Deviation	Remarks if any
1.	Schedule of Commercial Deviation, if any (All terms and conditions shall be as per GeM except as mentioned above)	NIL	
2.	Schedule of Technical Deviation, if any (Against Technical Specification)	NIL	

"We confirm that we have quoted as per specified price format provided along with this tender".

NAME & SEAL OF TENDERER

Enclosed:

- UN-PRICED BID FORMAT.
- REFERENCE DRAWINGS.

PROJECT - TANTRANSCO ARIYALUR - SUPPLY OF ILLUMINATION EQUIPMENT

SCHEDULE OF UNPRICED BID

Enquiry No.:

S.NO.	ITEM DESCRIPTION	HSN CODE	UNIT	QUANTITY	QUANTITY GEM	UNIT EX WORKS PRICES (INR)	TOTAL EX WORKS PRICES (INR) (Rs.)	GST RATE ON EX WORKS PRICES (%)	GST AMOUNT ON TOTAL EX WORKS PRICES (INR)	UNIT FREIGHT & INSURANCE CHARGES (INR)	TOTAL FREIGHT & INSURANCE CHARGES (INR)	GST ON FREIGHT & INSURANCE CHARGES (%)	GST AMOUNT ON FREIGHT & INSURANCE CHARGES (INR)	TOTAL FOR(D) PRICES (INR)
1	SUPPLY- ILLUMINATION EQUIPMENT: FLOOD LIGHT LED TYPE LIGHTING FIXTURE WITH ACCESSORIES		NO.	46	1 LOT									
A	TOTAL COST (SUPPLY) TO BHEL =													

FORMAT ONLY - NOT FOR FILLING PRICE

NOTE:

- PLEASE NOTE THAT UNPRICED COPY OF PRICE BID (i.e. WITH ALL PRICES BLANKED) SHALL BE FURNISHED ALONG WITH TECHNO-COMMERCIAL BID.
- REQUIRED COPIES OF FORMAT BE MADE & DETAILS MAY BE ANNEXED.

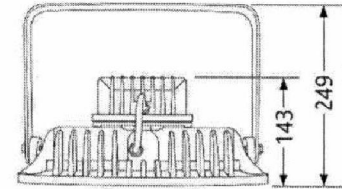
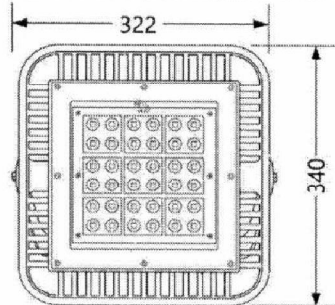
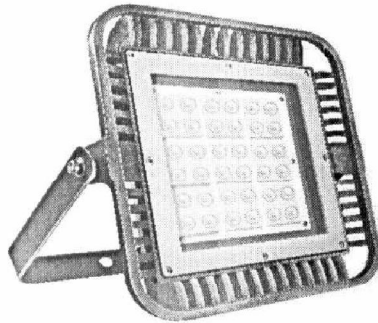
SIGNATURE & SEAL OF TENDERER

TECHNICAL DATA SHEET



Product Name : PERFORMAX

LED FLOOD LIGHT - Area lighting



Dimension Tolerance is $\pm 2\%$ and all dimensions are in 'mm'

Descriptions: Epoxy grey powder coated finish for better aesthetics. Housing with weatherproof gasket for LED and control gear compartment. Separate control gear for easy maintenance. Grey powder coated cast aluminium frame with heat resistant toughened clear glass fixed with SS screws. Mounting bracket with mounting angle adjustment provided for installation.

Applications: High mast applications/ Sports lighting/ Airport Aprons/ Railway Yards etc.

MECHANICAL SPECIFICATIONS

Housing and Frame	Pressure die cast aluminium
Diffuser	Clear toughen glass
Gasket	Silicon
Secondary Optics/ Beam angle	Lens / 60°
Control Gear	Integral / Constant current driver
Ingress Protection	IP 66
Impact Resistance	IK 07

LED SPECIFICATIONS

LED Make	Osram/Cree/Equivalent
CCT	5700°K \pm 355K
CRI	>70
Operating Temperature	-10° to +50°
Efficacy	110 lm/watt

ELECTRICAL SPECIFICATIONS

Rated Voltage and Frequency	240V 50HZ
Safe Operating Voltage Range	140V - 280V AC
Input Wattage	200W \pm 10%
Max Input Current	0.87 A
Power Factor	\geq 0.95
THD @ 240V	\leq 10%
Protection	Over voltage, Short circuit, Open circuit
Surge Protection	> 5KV inbuilt and 10KV external

PRODUCT ORDERING INFORMATION

Sr.no	Product code	Description	Case lot	Weight Approx
1	6F57PBA7200	LEDFL200I5 -01	1	7.72 Kg

Prepared By:SD

Approved by: RN

Date: 20/09/2018



Note: Data subject to variation due to change/improvement in the design, materials and process.

*Hardware for installation like bolt and washers are not in Eveready scope.

APPROVED & COMMUNICATED

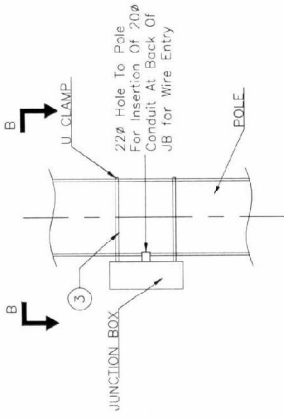
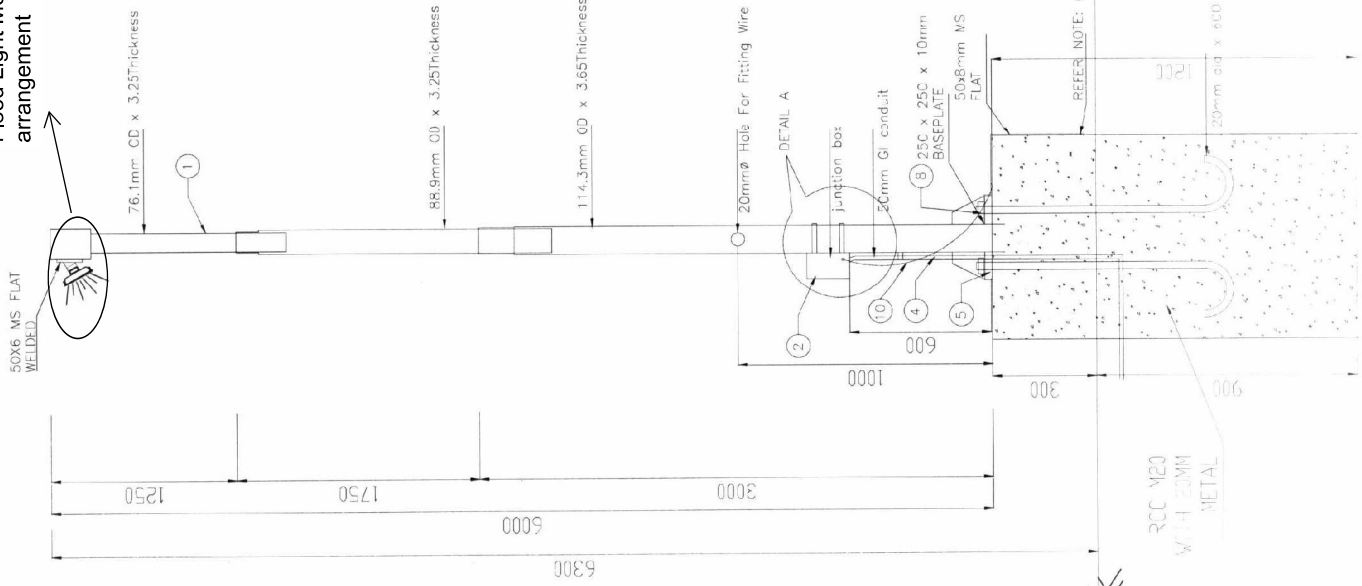
EVEREADY **INDUSTRIES INDIA LTD.**

EVEREADY Industries India Ltd
Middleton street, Kolkata - 7000071
Email: contactus@eveready.co.in

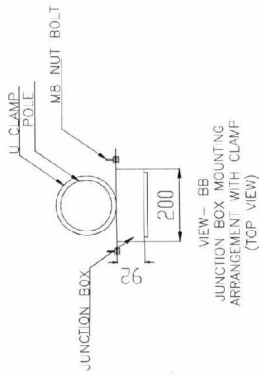
SUPERINTENDING ENGINEER
765KV/TRANSMISSION - V / TANTRANSO
6th Floor, N.P.K.R.R. Maaligai,
144, Anna Salai, Chennai - 600 002

TYPE-3 SUITABLE FOR 200W LED LIGHT FIXTURE

Flood Light Mounting arrangement



DETAIL A
JUNCTION BOX MOUNTING
ARRANGEMENT WITH CLAMP



VIEW - BB
JUNCTION BOX MOUNTING
ARRANGEMENT WITH CLAMP
(TOP VIEW)

- NOTES:
1. STEEL PIPES AS PER IS: 1161 & POLE SHALL BE FABRICATED AS PER IS : 2713
 2. EXPOSED OUTSIDE SURFACES SHALL BE COATED WITH ONE COAT OF RED OXIDE OVER WHICH TWO COATS OF HIGH QUALITY OF ALUMINUM PAINT.
 3. TOLERANCE AS PER IS: 2713

LEGEND:-

1. WELDED STEEL TUBULAR POLE
2. GALVANISE JUNCTION BOX TO BE SUPPLIED SEPARATELY BY VADIM.
3. 25X4 GALVANISED MS FLAT "U" CLAMP FOR FIXING JUNCTION BOX TO BE SUPPLIED SEPARATELY BY VADIM.
4. 2 NO 50# GI CONDUIT SLEEVE PER CABLE EMBEDDED IN CEMENT CONCRETE TO BE SUPPLIED SEPARATELY BY VADIM.
5. BASE PLATE 250X250X10MM
6. IF EARTH GRID IS AVAILABLE NEAR THE LIGHTING POLE THEN 50X8MM MS FLAT USED TO CONNECT LIGHTING POLE WITH MAIN EARTH GRID. 50X8MM MS FLAT SUPPLIED BY BHEL AND ERECTION BY VADIM.
7. IF EARTH GRID IS NOT AVAILABLE NEAR THE LIGHTING POLE THEN 1 NO. TREATED EARTH PIT SHALL BE USED FOR EARTHING OF TEN MULTIPLE LIGHTING POLES. EARTHING PIT TO BE SITED IN TREATED EARTH PIT, SUPPLIED AND ERECTION BY BHEL BUT 50X8MM MS FLAT CONNECTION WITH PIT SHALL BE DONE BY VADIM.
8. 2 INCH DIA. EARTHING BOLT AND WASHER TO BE SUPPLIED SEPARATELY BY VADIM FOR CONNECTION OF 50X8MM MS FLAT TO BE SITED IN TREATED EARTH PIT.
9. RCC M20 CEMENT CONCRETE CIRCULAR CIVIL FOUNDATION WITH 20MM METAL.
10. 8SWG GI WIRE CONNECTED BETWEEN THE JUNCTION BOX AND 50X5MM EARTH FLAT.

Date: 24.09.2021

Technical Qualifying Requirement for LED Flood Light for 765/400 kV Ariyalur S/s

The Bidder should have supplied minimum 15 nos of 160 W or higher wattage rating LED Flood lights in a single order during the last Ten years as on date of technical bid opening of this tender.

Prepared By

M. Vijay Kumar
24/09/21

M. Vijay Kumar
(Sr Manager/TBEM)

Checked By

S K Shukla
24/09/21.

S K Shukla
(Sr DGM/TBEM)

Approved By

Aruna Gulati
24/09/21

Aruna Gulati
(AGM & Head/TBEM)