

BHARAT HEAVY ELECTRICALS LIMITED

TIRUCHIRAPPALLI-620 014

Fuel Systems/PE (FB)



Title Sheet

(Material Code: 964242620000)

**SPECIFICATION FOR
FEEDER BELT (36" Belt Type Feeder)**

SPECIFICATION NUMBER : GF-255

REVISION No. : 04

04	22-11-2005	Clauses 05 and 06 altered. Knurling requirement specified. Side curb profile Defined.	J.V.V.A.K
03	17-04-2000	Material "Natural Rubber Compound was SBR" (Styrene Butadiene Rubber) Specn. Prepared in Cad.	S.G -sd-
02	19-12-1998	Revised in line with IS: 1891 – Part I / 1994	D.V.K -sd-
01	14-11-1995	Revised based on discussion with vendor.	S.G -sd-
<i>Rev. No.</i>	<i>Rev. Date</i>	<i>Description</i>	<i>Chd. & Appd.</i>

	<i>Name</i>	<i>Signature</i>	<i>Date</i>
<i>Prepared</i>	<i>M. Alagiri</i>	<i>-Sd-</i>	<i>26-01-95</i>
<i>Checked</i>	<i>S. Gnanaraj</i>	<i>-Sd-</i>	<i>27-01-95</i>
<i>Approved</i>	<i>M. Alagarsamy</i>	<i>-Sd-</i>	<i>27-01-95</i>



*Specification for
Feeder Belt
(36" Belt Type Feeder)*

**GF-255
Rev. 04**

01. DESCRIPTION:

Endless flat belt (Vulcanised spliced) with integrally moulded curbs at sides and integrally moulded 'V' guide at the bottom (pulley side) as shown in the sketch in pages 05 & 06

02. APPLICATION:

The belt has to continuously move between the drive and driven pulleys of raw coal feeder which handles crushed coal of 30 mm maximum size.

03. CONSTRUCTION:

The belt shall consist of 2 or 3 plies of woven fabric suitably impregnated with rubber and having rubber covers. The whole being vulcanised together in a uniform manner.

04. MATERIAL:

The carcass must be made out of plain Nylon – Nylon fabric suitably impregnated with natural rubber compound. The top and bottom covers are made out of natural rubber compound of 3 ± 0.2 mm & 2 ± 0.2 mm thick respectively. The cover grade shall be M24 as per IS: 1891 – Part I / 1994.

- 05. THICKNESS** : **8.4 ± 0.4 mm.**
The thickness of the belt shall be uniform through out the length of the belt i.e, the top and bottom surfaces of the belt shall be parallel to each other.
- 06. WIDTH** : **1168 ± 4 mm.**
The width of the belt shall be uniform through out the length of the belt i.e, the parallelism between the sides of the belt shall be maintained.
- 07. BELT STRENGTH** : Min. 400 Kilo Newtons / Metre width
(In the warp direction)
- 08. BELT JOINT STRENGTH** : Min. 50% of belt strength.
(In case of spliced belt)
- 09. ADHESION STRENGTH BETWEEN PLIES** : Min. 4.5 KN / Metre width.



*Specification for
Feeder Belt
(36" Belt Type Feeder)*

**GF-255
Rev. 04**

- 10. ADHESION STRENGTH BETWEEN COVER & PLY** : Min. 3.5 KN / Metre width.
- 11. SURFACE HARDNESS IN RUBBER COVER SPECIMEN AS PER IS: 3400 – PART 2** : 65 ± 5 shore ‘A’
- 12. ABRASION RESISTANT** : The abrasion loss must be maximum 150 mm³ when the abrasion test is conducted as per IS: 3400 Part 3.
- 13. RUNNING SPEED** : Max. 12 Metres / Minute.
- 14. DUTY CYCLE** : Continuous
- 15. WORKING TEMPERATURE** : 80° ± 1° C
- 16. MAXIMUM INSTANTANEOUS TEMPERATURE** : 200° C
- 17. SHELF LIFE REQUIRED** : Min. 2 years
- 18. LENGTH**

Refer table below with respect to part number. (Please note that length and weight only change with respect to part number and all other dimensions remain same.)

SL. No.	Belt part no.	Feeder size	Inside length of Belt (mm) *		Weight (Kgs) \$	Max. Length at the end of service life (mm)
			Min.	Max.		
01	GF – 009 - 2134	36" Gr. / Vol. Feeder 7' C.D	5450	5505	71 ± 5	5670
02	GF – 009 - 2743	36" Gr. Feeder 9' C.D.	6440	6505	84 ± 6	6700
03	GF – 009 - 1500	36" Volumetric Feeder 1.5M C.D	4180	4235	55 ± 4	4360

* Deviation between left and right sides, inside length is to be within 5 mm



*Specification for
Feeder Belt
(36" Belt Type Feeder)*

**GF-255
Rev. 04**

19. WEIGHT : Approx. 13 Kgs / Metre (\$)
(Refer point 20.3)

20. NOTES:

- 20.1** Straightness of 'V' guide must be maintained within a maximum camber of 3 mm in 1800 mm length.
- 20.2** Length of belt is to be measured on the inside surface. Measure at locations 25 mm away from the 'V' guide on either side. The length variation between left and right Side shall be within 5 mm.
- 20.3** Belt must have uniform weight per unit area.
- 20.4** Nylon tire chord breaker of 100 mm width is to be placed between bottom cover and carcass above 'V' guide of the belt.
- 20.5** 'V' guide and curbing must be as shown in the sketches in this specification.
- 20.6** All manufacturing repairs to either top or bottom cover to be buffed level with adjoining area so that the thickness in the repaired area does not vary from the adjacent area by more than ± 0.5 mm.
- 20.7** Outer surface of the belt shall be knurled.
- 20.8** Surface blemishes that are in the top or bottom cover of the belt will be a cause for rejection if they are through the covers and allow the carcass to show.
- 20.9** No other identification marks except the following must be marked on the belt by the vendor.
- a) BHEL P.O. number & date.
 - b) Serial number of the belt.
 - c) Part number.
 - d) Feeder size.
 - e) Date of manufacture.
 - f) Weight of belt.
 - g) Arrow mark.
 - h) Vendor code.

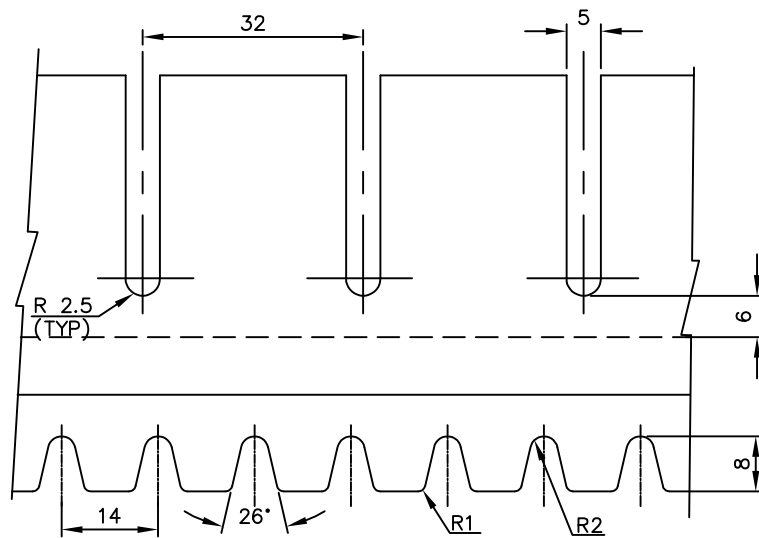
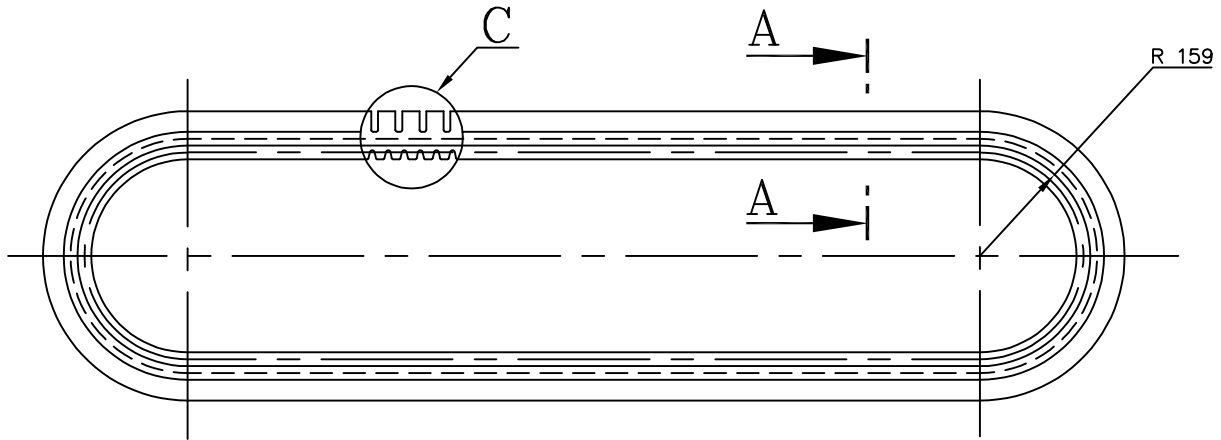
20.10 PACKING:

The belt surface must be profusely dusted with chalk powder and wrapped with polythene sheet and packed in wooden box.

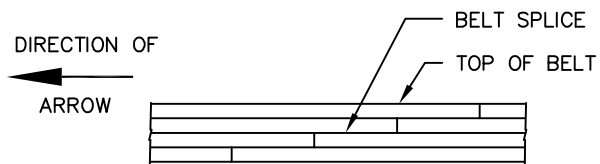


SPECIFICATION FOR
BELT
(36" BELT TYPE FEEDER)

SPECN.No
GF-255
REV NO. 04



DETAIL-C

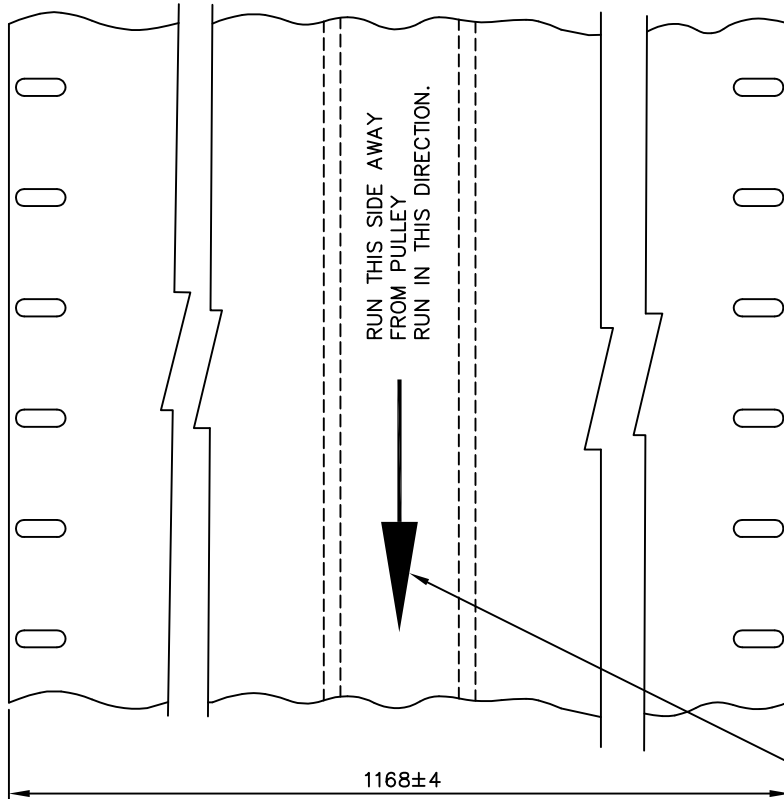


SECTION-BB



SPECIFICATION FOR
BELT
(36" BELT TYPE FEEDER)

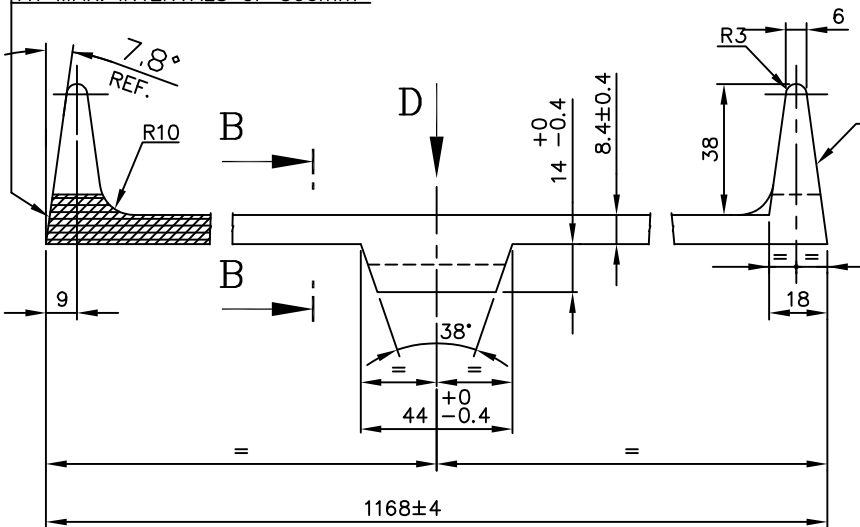
SPECN.No
GF-255
REV No. 04



VIEW-D

YELLOW ARROWS EQUALLY SPACED
AT MAX. INTERVALS OF 3000mm
MIN. 2 YELLOW PAINT ARROWS
EQUALLY SPACED PER BELT.

RAISED LETTERING 6x0.5
BHEL TRICHY & VENDOR CODE
AT MAX. INTERVALS OF 500mm



THIS SURFACE SHALL BE FREE
FROM ANY BURRS/STEPS.

UNTOLERANCED DIMENSIONS ARE
TO BE MAINTAINED AS PER
IS : 2102(MEDIUM)

ALL DIMENSIONS ARE IN MM.

SECTION-AA