



SPECIFICATION FOR
**PIN & BUSH TYPE
FLEXIBLE COUPLING**

SPEC. No.
GF-073
Rev. 04

MATERIAL CODE : 96-424-070 Gravimetric Feeder
(Clean-Out Conveyor)
PGMA: 65-736

QUANTITY / FEEDER : 1

DESCRIPTION & APPLICATION : The coupling will be used to connect geared motor to
clean-out conveyor drive shaft in
raw coal gravimetric feeder.

TYPE : Pin & Bush type flexible coupling.

RATING OF PRIME MOVER : 0.33 KW ; 950 rpm.

SPEED OF COUPLING : One rpm.

DUTY : Continuous.

MATERIALS :

FLANGE NUTS : Steel plate IS:2062-St 42W

PINS / BOLTS : High tensile steel (property class 8.8)

BUSHES : Special oil and heat resisting synthetic rubber
(50 to 55 durometer) hardness.

No. OFF : Four number in each of pin, bolt and bush.

NOTES :-

1. Coupling is to be supplied along with pins & bushes, etc.
2. The flexible bushes should be unaffected by water, dust, oil and other atmospheric conditions.
3. Coupling is to be supplied in fully machined condition.
4. Coupling halves I & II should be interchangeable within a batch of supply.
5. Grade of tolerance for dimensions should be as per is: 2102 medium

REV 04. M.A. D.V.K
HOLES DETAIL FOR CONNECTING PINS ADDED.

REV 03. M.A. D.V.K
REVISED FOR PROCURING AS FULLY MCD. CONDITION
AS PER OP&C Lr. No. PE:FS:Feeder 056 Dt.09/05/02

REV 01. D.K.R - Sd -
MATERIAL FOR FLANGE NUTS WAS CAST IRON Gr. 20 OF IS: 210.
NO. OFF PIN, BOLT & BUSH ADDED . NOTE 4, 5 & 6 ADDED.
MACHINE 3.2 ADDED. DIM DIA 35 +0.02/-0.03 ADDED.

REV 02. R.V.C - Sd -
SPIGOT DETAIL AND MANUFACTURING DIMENSIONS
ADDED.

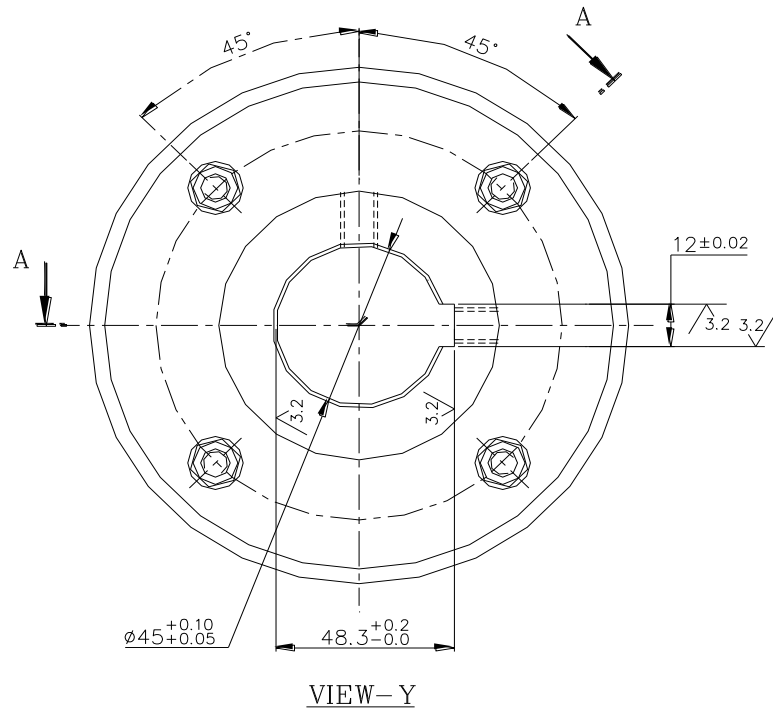
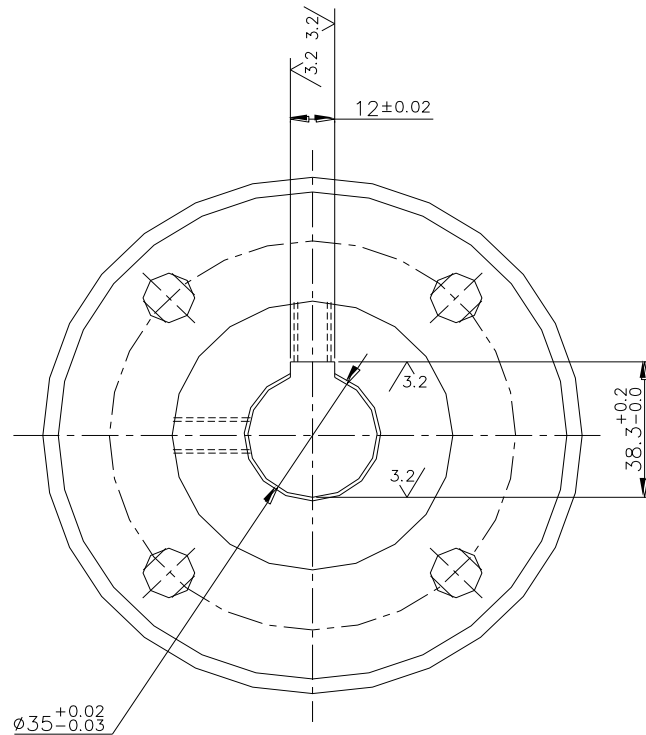
Prepared	S.Manivannan	- Sd-	21-04-88	MILL & FEEDERS	SHEET No. 01 OF 03
Checked	P.Kalyanasundaram	-Sd-	23-04-88		
Approved	D.K.Ravindranathan	-Sd-	23-04-88		

SPEC. No.
GF-073
Rev. 04



SPECIFICATION FOR PIN & BUSH TYPE FLEXIBLE COUPLING

SPEC. No.
GF-073
Rev. 04



Prepared	S.Manivannan	- Sd-	21-04-88	MILL & FEEDERS	SHEET
Checked	P.Kalyanasundaram	-Sd-	23-04-88		No.
Approved	D.K.Ravindranathan	-Sd-	23-04-88		03 OF 03