

BAP: CF&D:16 / 3251

May 3, 2008

To

Dear Sir(s),

**Sub: Fencing around LOGISTIC YARD - Reg.**

Ref: Tender Notice No .BAP: CF: 01 / 2008 - 09 Dt 03.05.2008 .

~~~~~  
We herewith enclose the document for the above work. You are required to submit most competitive offer in a sealed cover so as to reach the **OFFICE OF AGM (Civil Projects & Services) before 15.00 Hrs. on 13.05.2008.**

**The tender will be opened by 15.00 hrs. on the same day.** The Earnest Money Deposit for the above work is as given below and this will be accepted in the form of DD, drawn in favour of, BHEL/RANIPET-6 payable at RANIPET-6, (OR) Cash receipt issued by BHEL authorities on remittance of cash (as permissible under Income Tax Act) at Cash Office BHEL/RANIPET-6. Without EMD, your tender will not be considered.

**THE SUCCESSFUL TENDERER IS REQUIRED TO START THE WORK IMMEDIATELY AND COMPLETE THE WORK WITHIN THE STIPULATED TIME. UNDER ANY CIRCUMSTANCES NO EXTENSION OF TIME WILL BE GRANTED.**

NAME OF WORK : **Fencing around LOGISTIC YARD.**  
EMD AMOUNT : **Rs 1.00 Lakh**  
DATE OF OPENING : **13.05.2008**  
PERIOD OF CONTRACT : **Two months**

We hope to receive your offer on the due date of opening and in case you are not interested to quote, then you please state the reasons and return back the documents.

Rate quoted shall be firm throughout the contract period. For details of taxes refer special conditions of contract enclosed.

Increasing the rates subsequent to opening of tender is not admissible and the tender is liable for cancellation/forfeiture of EMD. The General Conditions of Contract in force will also applicable for this tender. The rates quoted in the tender shall remain valid for a period of Three Months from the date of opening the tender.

No deviations to the tender conditions will normally be accepted.

Thanking you,

Yours faithfully,  
For and on behalf of BHEL,

(P.NARASIMHAN)  
AGM (Civil Projects & Services)  
Encl.: **Tender Document**

**BHARAT HEAVY ELECTRICALS LIMITED**

BOILER AUXILIARIES PLANT

RANIPET - 632406

**ESTIMATE****NAME OF WORK : FENCING AROUND LOGISTIC YARD****ESTIMATE REF NO : CF/REV/013**

| CPWD 2007<br>REF | SLNO | DESCRIPTION                                                                                                                                                                                                                                                                                                                                                                                         | QTY   | UNIT | RS<br>RATE<br>P | RS<br>AMOUNT<br>P |
|------------------|------|-----------------------------------------------------------------------------------------------------------------------------------------------------------------------------------------------------------------------------------------------------------------------------------------------------------------------------------------------------------------------------------------------------|-------|------|-----------------|-------------------|
| 2.6.1            | 01   | Earth work in EXCAVATION by mechanical means (Hydraulic excavator) / manual means over areas (exceeding 30 cm in depth, 1.5 m in width or 10 sqm on - plan) including dressing of sides & ramming of bottoms, lift upto 1.5m,including getting out the excavated soil and disposal of surplus excavated soil as directed,with in a lead of 50 m IN ALL KINDS OF SOIL.                               | 1200  | CU.M | 101.85          | 122220.00         |
| 4.1.9            | 02   | Providing and laying in position CEMENT CONCRETE of specified grade excluding the cost of centring and shuttering for ALL WORKS UPTO PLINTH LEVEL, with:<br>CC 1:4:8 (1 cement: 4 fine sand: 8 graded stone aggregate 40 mm nominal size)                                                                                                                                                           | 1200  | CU.M | 1415.55         | 1698660.00        |
| 5.16             | 03   | Providing, hoisting and fixing up to floor five level precast reinforced cement concrete in shelves including setting in cement mortar 1:3 (1 cement : 3 coarse sand), cost of required centring, shuttering and finishing with neat cement punning on exposed surfaces but excluding the cost of reinforcement with 1:2:4 (1 cement: 2 coarse sand: 4 graded stone aggregate 12.5mm nominal size). | 500   | CU.M | 4871.70         | 2435850.00        |
| 5.22.3           | 04   | Reinforcement for R.C.C. work including straightening, cutting, bending, placing in position and binding all complete. Cold twisted bars                                                                                                                                                                                                                                                            | 55000 | KG.  | 6.19            | 340450.00         |
| 10.2             | 05   | Structural steel work riveted, bolted or welded in built up sections, trusses and framed work, including cutting, hoisting, fixing in position and applying a priming coat of approved steel primer all complete.                                                                                                                                                                                   | 6000  | KG.  | 10.70           | 64200.00          |
| 13.63.1          | 06   | Painting with aluminium paint of approved brand and manufacture to give an even shade. TWO OR MORE COATS ON NEW WORK.                                                                                                                                                                                                                                                                               | 320   | SQ.M | 28.60           | 9152.00           |
| 1.1.2            | 07   | Carriage of excavated materials upto a lead of 2 KM including loading, leading, unloading spreading as per the instruction of Engineer-in-charge.                                                                                                                                                                                                                                                   | 1200  | CU.M | 56.41           | 67692.00          |
| 16.17            | 08   | Supplying and fixing of barbed wire for the fencing with necessary G.I. binding wires of 18/20 gauge as instructed by the                                                                                                                                                                                                                                                                           | 25000 | R.M. | 5.85            | 146250.00         |

CONTRACTOR/ TENDERER

ACCEPTING OFFICER

**BHARAT HEAVY ELECTRICALS LIMITED**

BOILER AUXILIARIES PLANT

RANIPET - 632406

**ESTIMATE****NAME OF WORK : FENCING AROUND LOGISTIC YARD**

| CPWD 2007<br>REF | SLNO | DESCRIPTION                                                                       | QTY | UNIT | RATE<br>RS<br>P | AMOUNT<br>RS<br>P |
|------------------|------|-----------------------------------------------------------------------------------|-----|------|-----------------|-------------------|
|                  |      | Engineer-in-charge. Rate to include cost<br>of all materials labour etc. complete |     |      |                 |                   |

TOTAL ESTIMATED VALUE 48,84,474.00

CONTRACTOR TENDER PERCENTAGE @ ABOVE / BELOW / AT PAR \_\_\_\_\_%

(Percentage in words )

TOTAL VALUE OF WORK

=====

=====

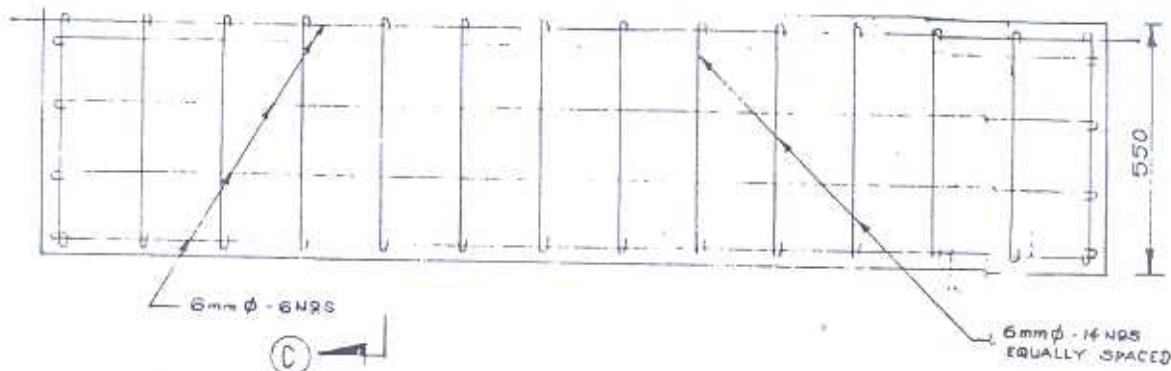
CONTRACTOR/ TENDERER

ACCEPTING OFFICER

| <b>BHARAT HEAVY ELECTRICALS LIMITED</b>            |                                                                                                                                                                                                                                                                                                                                                                                                                                                           |
|----------------------------------------------------|-----------------------------------------------------------------------------------------------------------------------------------------------------------------------------------------------------------------------------------------------------------------------------------------------------------------------------------------------------------------------------------------------------------------------------------------------------------|
| <b>BOILER AUXILIARIES PLANT</b>                    |                                                                                                                                                                                                                                                                                                                                                                                                                                                           |
| <b>RANIPET - 632 406</b>                           |                                                                                                                                                                                                                                                                                                                                                                                                                                                           |
| <b>NAME OF WORK: Fencing around LOGISTIC YARD.</b> |                                                                                                                                                                                                                                                                                                                                                                                                                                                           |
| <b>SPECIAL CONDITIONS OF CONTRACT</b>              |                                                                                                                                                                                                                                                                                                                                                                                                                                                           |
| 1                                                  | The tenderer shall quote a percentage above or below or at par, the rates shown in the Bill of Quantities based on CPWD DSR 2007. The percentage quoted shall be clearly written both in words and figures.                                                                                                                                                                                                                                               |
| 2                                                  | The quoted percentage will apply to the individual items uniformly .                                                                                                                                                                                                                                                                                                                                                                                      |
| 3                                                  | The above rates does not include PF & ESI remittance .The tenderer shall quote inclusive of PF & ESI contribution to their workers.                                                                                                                                                                                                                                                                                                                       |
| 4                                                  | Items of work other than those mentioned in Bill of Quantities will have to be carried out at the rates to be fixed by this organisation .The same offered percentage will be applicable with reference to CPWD DSR 2007.                                                                                                                                                                                                                                 |
| 5                                                  | The current minimum wages per day for USW is Rs.136.30/-                                                                                                                                                                                                                                                                                                                                                                                                  |
| 6                                                  | Coefficient of consumption for paint, distemper, cement, etc. shall be as per CPWD 2007 data.                                                                                                                                                                                                                                                                                                                                                             |
| 7                                                  | <b>BHEL reserves the right of splitting the work as its description to TWO or THREE parties, at the rate of 60% of the order quantity on L1 and balance 40% on L2 at the ordering rate of L1; (or) 50% of the order quantity on L1 , balance 30% on L2 &amp; 20% on L3 at the ordering rate of L1 respectively.</b>                                                                                                                                       |
| 8                                                  | Time is essence of the contract. Any delay beyond the delivery date will be subjected to LD.                                                                                                                                                                                                                                                                                                                                                              |
| 9                                                  | Tenderers are requested to visit the site and verify themselves about the actual site conditions to know about the site facilities, distances and assess the site condition before quoting for the job. No compensation for not aquiting themselves with the actual site conditions will be entertained at the later stage.                                                                                                                               |
| 10                                                 | The tenderer shall quote inclusive of PF & ESI contribution to their workers.                                                                                                                                                                                                                                                                                                                                                                             |
| 11                                                 | Power and water will be available free of charges from the nearest tapping point .The contractor should make necessary arrangement for tapping the same.                                                                                                                                                                                                                                                                                                  |
| 12                                                 | Safety precautions should be taken while doing the work all places.                                                                                                                                                                                                                                                                                                                                                                                       |
| 13                                                 | Rate quoted shall be firm throughout the contract period and include all royalties, terminal taxes, central or provincial excise tax, sales tax, tax on works contract and any other taxes leviabale under the State or Central Government Rules. The Bharat Heavy Electricals Limited will not entertain any claim in this regard.                                                                                                                       |
| 13a                                                | <b>The rates are to be quoted exclusive of service Tax. You will have to submit the Service Tax Registration Certificate to BHEL . You will have to remit the service tax and claim reimbursement from BHEL as per contract condition on production of necessary documents . If for any reason , tenderer has to pay penalty ,interest on service tax,the tenderer has to bear such additional payment. BHEL will pay only the Service Tax at actual.</b> |
| 14                                                 | All materials shall confirm to the latest IS/IRC/MORTH specifications                                                                                                                                                                                                                                                                                                                                                                                     |

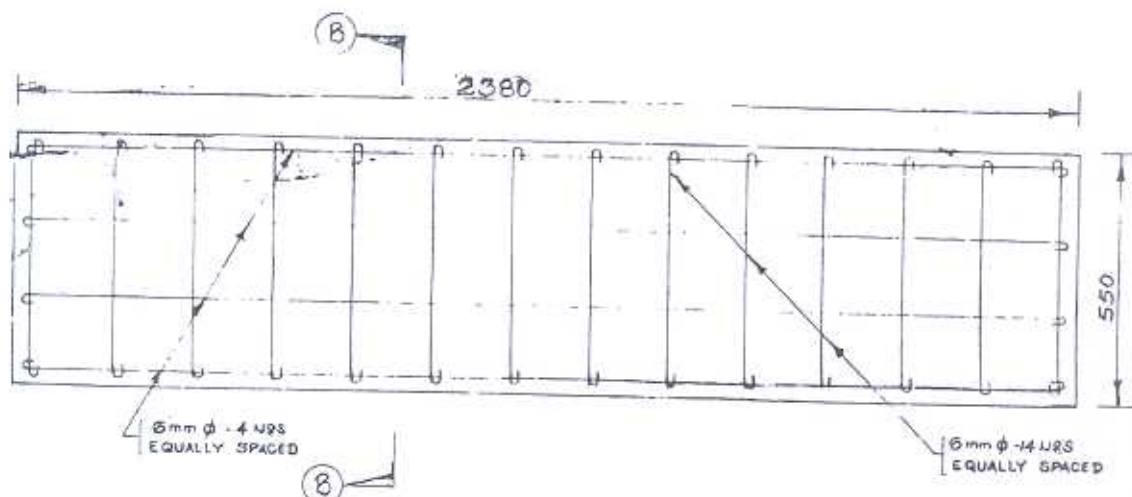
|    |                                                                                                                                                                                                                      |
|----|----------------------------------------------------------------------------------------------------------------------------------------------------------------------------------------------------------------------|
| 15 | Once the work is completed the contractor should remove all the unwanted materials from the site time to time and it should be disposed off as per the instructions of Engineer-in-charge without any further delay. |
|----|----------------------------------------------------------------------------------------------------------------------------------------------------------------------------------------------------------------------|

|    |                                                                                                                                                                                                                                                                                                                                                          |
|----|----------------------------------------------------------------------------------------------------------------------------------------------------------------------------------------------------------------------------------------------------------------------------------------------------------------------------------------------------------|
| 16 | All the rates are inclusive of scaffolding charges ,sundries & contingencies ,carriage of materials etc., complete.                                                                                                                                                                                                                                      |
| 17 | All works shall be carried out as per standard specifications and instructions of Engineer-in-charge.                                                                                                                                                                                                                                                    |
| 18 | The General conditions of contract in force shall apply to this contract.                                                                                                                                                                                                                                                                                |
| 19 | You have to follow all labour laws like minimum wages ,PF & ESI throughout the contract period.                                                                                                                                                                                                                                                          |
| 20 | <p>The tenderer shall necessarily poses their own PF &amp; ESI registration .The present rate of ESI &amp; PF are as under.</p> <p><b>Provident Fund</b></p> <p>Employee 12.00%</p> <p>Employer 8.33%</p> <p><b>FPS</b></p> <p>Employer 3.67%</p> <p>Surcharge 1.10%</p> <p>EDLI 0.50%</p> <p><b>ESI</b></p> <p>Employer 4.75%</p> <p>Employee 1.75%</p> |
| 21 | All facilities shall be extended to the tenderer for smooth execution of the contract.                                                                                                                                                                                                                                                                   |



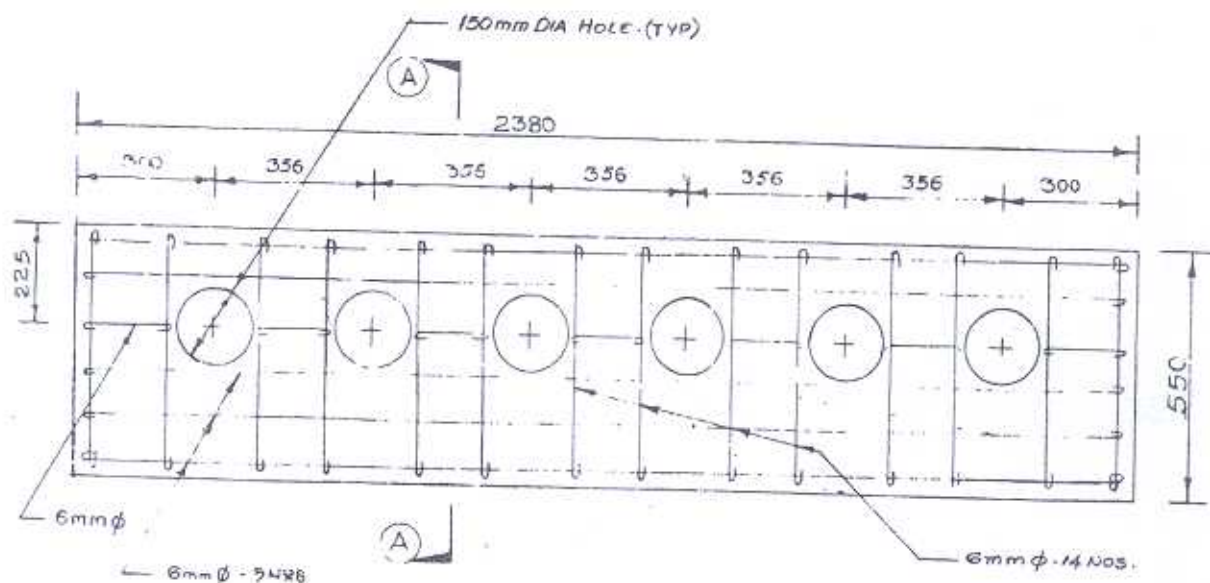
SLAB-S3

100  
170



SLAB-S2

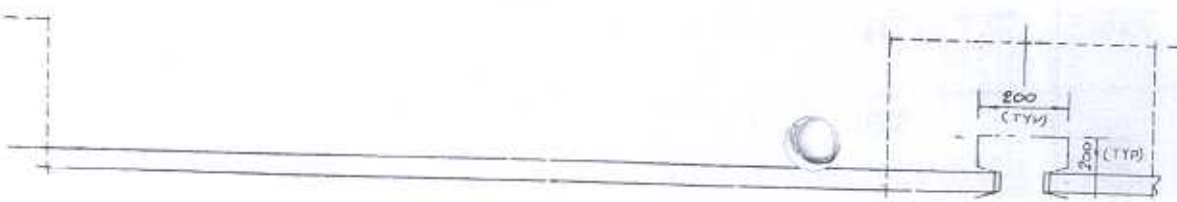
[ALL  
170



SLAB-S1

CENTRALLY  
PLACED (TYP)

[ALL  
SE



CIVIL

