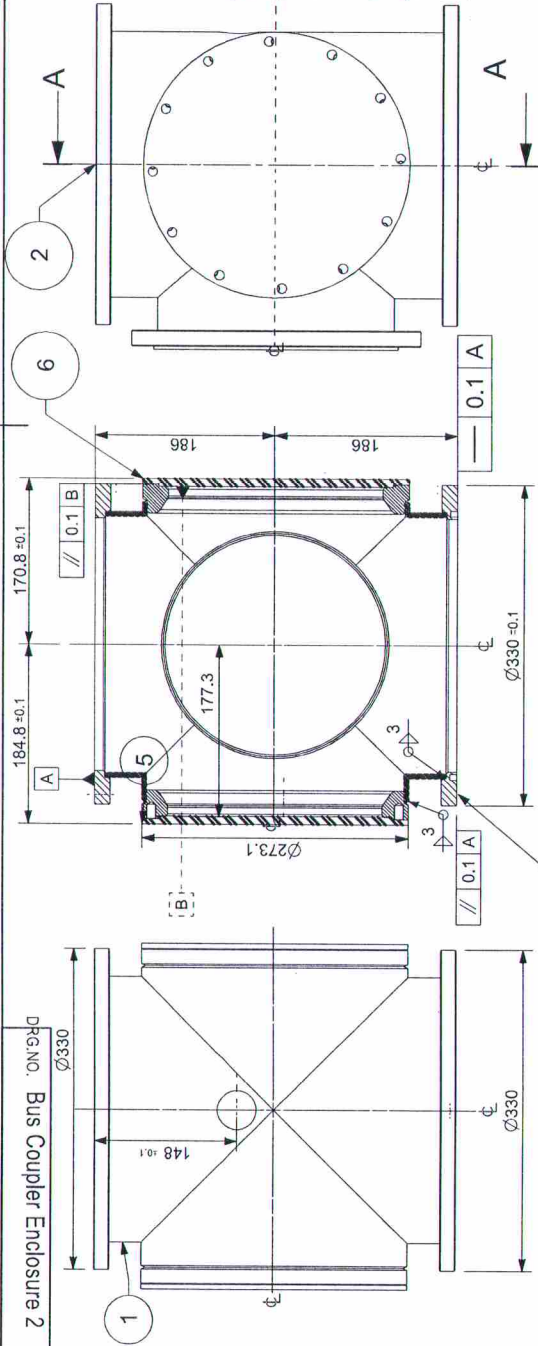




FIRST ANGLE PROJECTION

(ALL DIMENSIONS ARE IN MM)

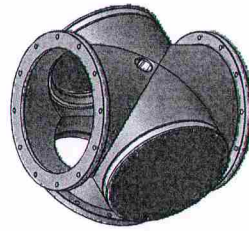
DRG. NO.  $\phi 330$   
Bus Coupler Enclosure 2



SECTION A-A

- NOTES :-
1. THE DIMENSIONS GIVEN IN THIS DRG. INCLUDING DIMENSIONS OF DETAILED COMPONENT ARE TO BE MAINTAINED BY MACHINING IN THIS ASSEMBLY. DETAILED COMPONENT DRAWINGS ARE SHOWING FINAL DIMENSIONS AND NECESSARY MACHINING ALLOWANCES ARE TO BE KEPT BY THE SUPPLIER FOR MACHINING/WELDING.
  2. PARALLELISM AND PERPENDICULARITY OF ITEM 002 & 003 (FLANGES) & 004 (EARTH COVER) SHOULD BE MAINTAINED THROUGH WELDING/ FIXTURE/MACHINING.
  3. IN ITEM 005 (RFT) BODY, THE FACE OF HOLE  $\phi 44 \times 4$  DEEP SHOULD BE OUT SIDE THE PIPE.  $\phi 40$  DIA HOLE FOR WELDING RFT BODY SHOULD BE DRILLED ACCURATELY.
  4. ALL INSIDE WELDS SHOULD BE GROUND SMOOTH.
  5. ALL WELDS TO BE CHECKED FOR 100% DP AND CERTIFIED WITH PUNCH MARK ON ASSEMBLY.
  6. PIPE TO BE SAND/ GLASS BEAD BLASTED FROM INSIDE AS WELL AS OUT SIDE TO BE DESCALE INSIDE SURFACE TO BE ELECTRO POLISHED.
  7. POWDER COAT ALL EXTERNAL SURFACES (SIMENS GRAY) AFTER THROUGH CLEANING AND DEGREASING ASSEMBLY IN SOLVENT. PROTECT SEALING SURFACES USING SUITABLE MASK (AVOID USING GREASE, COTTON WASTE).
  8. ALL FLANGE FACES AND RFT HOLE SHOULD BE PROTECTED USING SUITABLE MASK BEFORE PACKING FOR DESPATCH.
  9. ALL JOINTS TO BE TIG / FUSION WELDED TO HAVE MINIMUM DISTORTION.
  10. LEAK TEST SHOULD BE DONE USING FUMY FLANGES.
  11. FOR MANUFACTURING, TESTING, INSPECTION, PACKING AND SUPPLY PLEASE REFER SG 12501.
  12. TOLERANCE SHOULD BE IN THE RANGE OF  $\pm 0.1$  MM FOR ALL THE DIMENSION WHERE EVER IF NOT SPECIFIED.

VAR. NO.	ITEM NO.	DESCRIPTION	STP.	DRAWING NO.	MATL. CODE	UNIT WT.	QTY.
	7	FLANGE				*****	2
	6	EARTH COVER PLATE ASSLY				*****	1
	5	INSULATOR COVER				*****	1
	4	35176300022				*****	1
	3	35170300058				*****	1
	2	35176300124				*****	1
	1	35170300028- BUSCOUPLER 2				*****	1

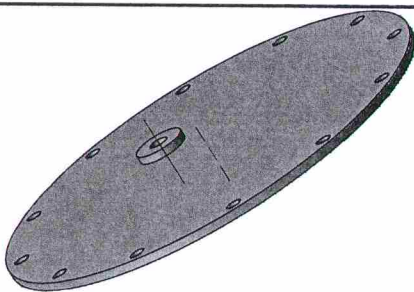
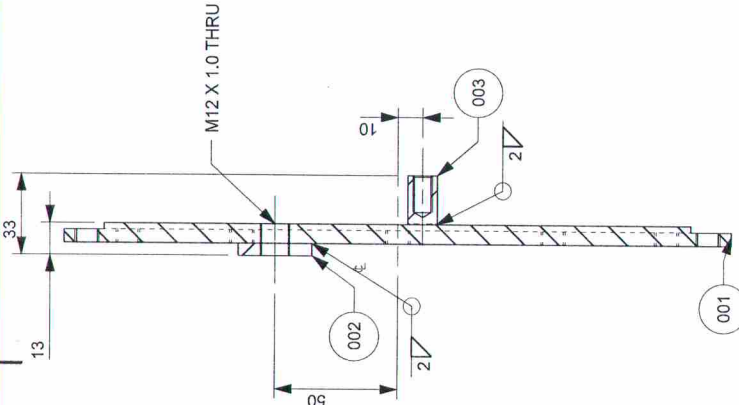
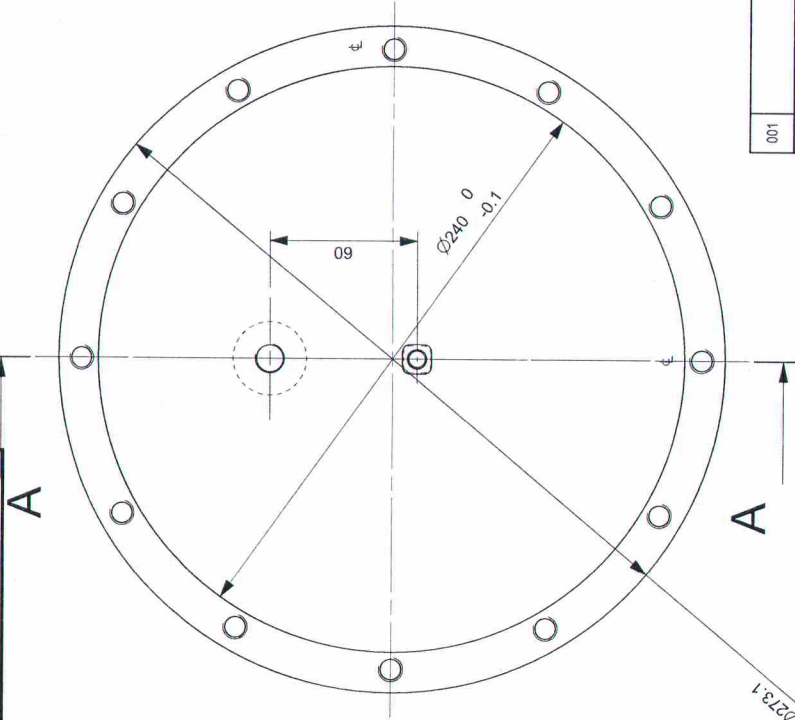


ADDITIONAL INFORMATION mRikn dk izckj ;k xzkgd@ijf;ksuik dk uke TYPE OF PRODUCT OR NAME OF CUSTOMER/PROJECT Hkkjfr gsoh bysrdV dYI fyreV sM Hkksiky BHARAT HEAVY ELECTRICALS LTD. BHOPAL		GVM 36 uke/NAME PKD JAG SKP Sd/- Sd/- Sd/- 14.11.17 14.11.17 14.11.17 00 ostj- dh laj;k NO. OF VAR	
STATUS OF DRAWINGS SWE SWM TCX APPD		Hkkjfr gsoh bysrdV dYI fyreV sM Hkksiky BHARAT HEAVY ELECTRICALS LTD. BHOPAL Hkkj (B-zkz) SCALE NTS 29.59 vls Mbzax dk lanHkZ REF. TO ASSY. DRG. 25170300002 001 006 en dz- ITEM NO. NO. OF ITEMS 001 006 vksj;k dz-/DRAWING NO. Bus Coupler Enclosure 2 i" B dz-/SHT NO.1 " Bksa dh laj;k/NO. OF SHT2	
REV. DATE. ALTERED - CHECKED - APPD -		REV. DATE. ALTERED - CHECKED - APPD -	
INVENTORY NO.		ZONE	
SIGN AND DATE		ZONE	
REF. DRG. NO. BD216DG010_2110M		ZONE	

THE INFORMATION ON THIS DOCUMENT IS THE PROPERTY OF BHARAT HEAVY ELECTRICALS LIMITED  
 IT MUST NOT BE USED DIRECTLY OR INDIRECTLY IN ANY WAY DETERMINAL TO THE INTEREST OF THE COMPANY

FIRST ANGLE PROJECTION

DRG. NO. 35170300090



NOTE:-  
1. HOLE M12 X 1 TO BE DONE AFTER WELDING OF ITEM 001 & 002.

(ALL DIMENSIONS ARE IN MM)

THE INFORMATION ON THIS DOCUMENT IS THE PROPERTY OF BHARAT HEAVY ELECTRICALS LIMITED  
IT MUST NOT BE USED DIRECTLY OR INDIRECTLY IN ANY WAY DETERMENTAL TO THE INTEREST OF THE COMPANY

SECTION A-A

VAR. NO.	REMARKS	ITEM NO.	DESCRIPTION	IT. NO.	MATL. CODE	MATL. SPECN.	UNIT	UNIT WT.	QTY.
001		003	GAS STUD	001			KG.	0.02	001
001		002	EARTH STUD	001			KG.	0.03	001
001		001	EARTH COVER	001			KG.	2.72	001

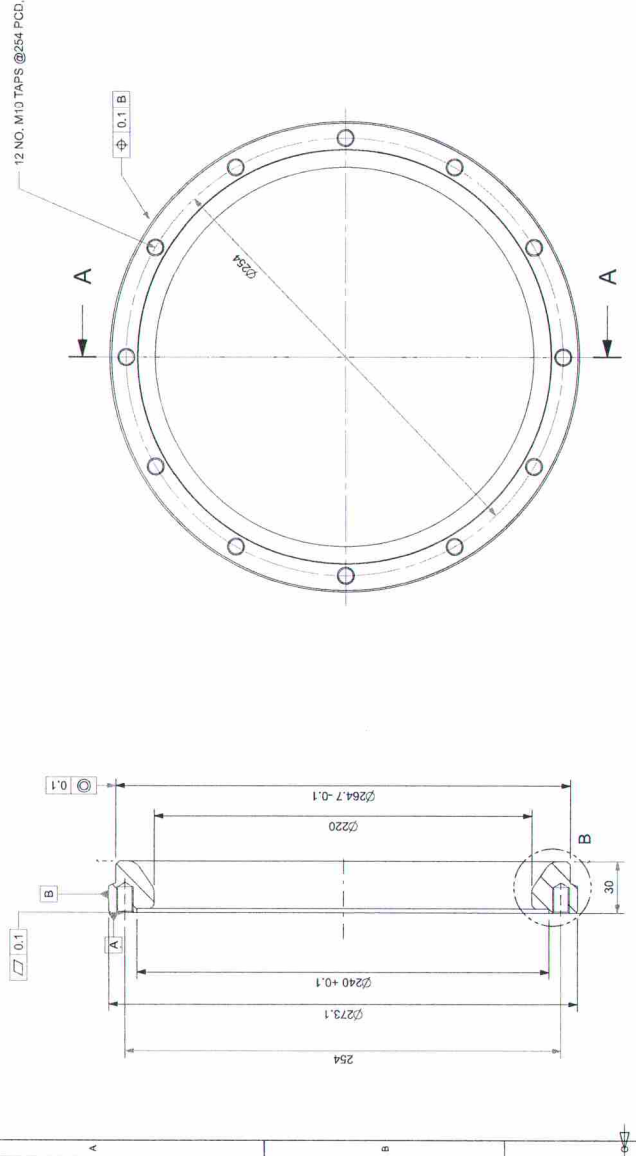
ADDITIONAL INFORMATION mRikn dk izcdkj ;k xzkqgd@jifj;kestuk dk uke TYPE OF PRODUCT OR NAME OF CUSTOMER/PROJECT		Hkkjir gsoh bysDV' dY1 fyreVsm Hkksiky BHARAT HEAVY ELECTRICALS LTD. BHOPAL		uke/NAME AKN Sd/- AK Sd/- SKP Sd/-		gl.rk-/SIGN. Sd/- Sd/- Sd/-		osfj- dh laj;k NO OF VAR		12.09.2020 12.09.2020 12.09.2020	
STATUS OF DRAWINGS SWE SWM TCX		DISTRIBUTION OF DRAWINGS SWE SWM TCX		Hkksiky BHARAT HEAVY ELECTRICALS LTD. BHOPAL		Hkksiky BHARAT HEAVY ELECTRICALS LTD. BHOPAL		Hkksiky BHARAT HEAVY ELECTRICALS LTD. BHOPAL		Hkksiky BHARAT HEAVY ELECTRICALS LTD. BHOPAL	
REV. DATE. ALTERED - CHECKED - APPD -		REV. DATE. ALTERED - CHECKED - APPD -		AA0230208		M		NTS		2.77	
INVENTORY NO.		SIGN AND DATE		REF.DRG.NO.		INVENTORY NO.		SIGN AND DATE		REF.DRG.NO.	
ZONE		ZONE		ZONE		ZONE		ZONE		ZONE	
EARTH COVER (M) ASSY.		EARTH COVER (M) ASSY.		EARTH COVER (M) ASSY.		EARTH COVER (M) ASSY.		EARTH COVER (M) ASSY.		EARTH COVER (M) ASSY.	
35170300090		35170300090		35170300090		35170300090		35170300090		35170300090	



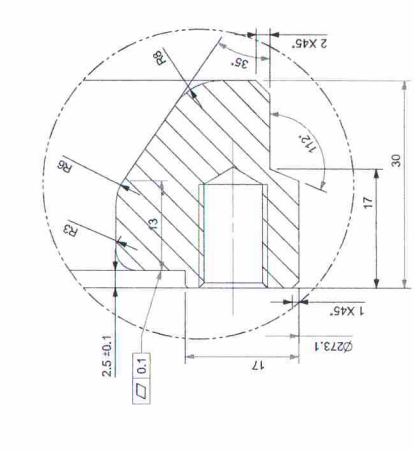








DETAIL B



ALL SHARP EDGES SHALL BE MACHINED TO R1.

3.2

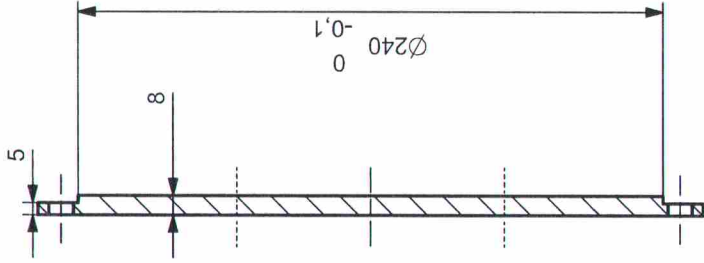
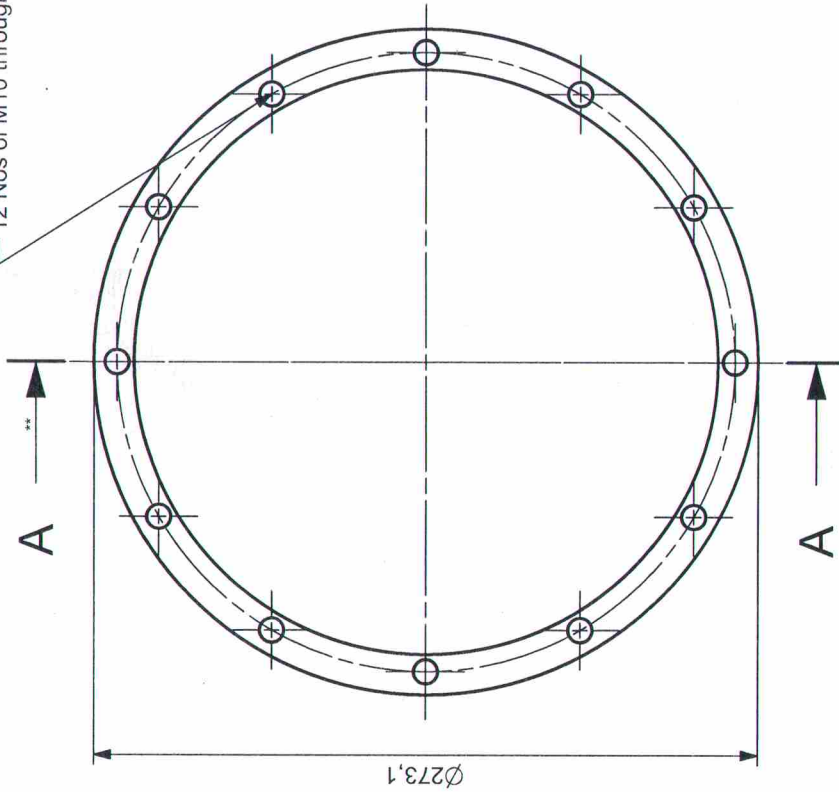
REMARKS	VAR. NO.	ITEM NO.	DESCRIPTIC
	001		Ø340 X 45 SS-304L

ADDITIONAL INFORMATION		STATUS OF DRAWINGS		DISTRIBUTION OF DRAWINGS		REV. DATE.		ZONE
TYPE OF PRODUCT OR NAME OF CUSTOMER/PROJECT GIS-420		SRS Sd/- 14/05/14 SONALI Sd/- 14/05/14 SKP Sd/- 14/05/14		SWE SWM TCX		ALTERED - CHECKED - APPD -		ZONE
uke/NAME gl.k./SIGN. /ma/DATE SRS Sd/- 14/05/14 SONALI Sd/- 14/05/14 SKP Sd/- 14/05/14		BHARAT HEAVY ELECTRICALS LTD. BHOPAL		vsk/TC SCALE 1:2		ALTERED - CHECKED - APPD -		ZONE
DEPT/SWE UNTO./DMS. GR. AA02/302/08		Hk/ (Hk/2G) WEIGHT(KG) 3.78		APPD -		ALTERED - CHECKED - APPD -		ZONE
vsk/TC DRAWING NO. 25027200116		Hk/ (Hk/2G) WEIGHT(KG) 3.78		APPD -		ALTERED - CHECKED - APPD -		ZONE
vsk/TC DRAWING NO. 25027200116		Hk/ (Hk/2G) WEIGHT(KG) 3.78		APPD -		ALTERED - CHECKED - APPD -		ZONE



DRG. NO. Insulator Cover

12 Nos of M10 through hole at PCD 254



3.2

SECTION A-A

THE INFORMATION ON THIS DOCUMENT IS THE PROPERTY OF BHARAT HEAVY ELECTRICALS LIMITED IT MUST NOT BE USED DIRECTLY OR INDIRECTLY IN ANY WAY DETERMINAL TO THE INTEREST OF THE COMPANY

REF.DRG. NO. BD2116DG010\_21111(M&R)

SIGN AND DATE

INVENTORY NO.

NOTE:  
 1. ALL UNSPECIFIED DIMENSIONAL TOLERANCES SHOULD BE MAINTAINED TO 0.1MM  
 2. POWDER COAT ALL EXTERNAL SURFACES (COLOUR TO BE SPECIFIED IN PO). AFTER THOROUGH CLEANING AND DEGREASING ASSEMBLY IN SOLVENT. PROTECT RFT BODY, GAS STUD AND SEALING SURFACES USING SUITABLE MASK (AVOID USING GREASE, COTTON WASTE).

ADDITIONAL INFORMATION		STATUS OF DRAWINGS		DISTRIBUTION OF DRAWINGS		REV. DATE.		ZONE	
mPikn dk izdki :k xzkg@fjksur dk uke TYPE OF PRODUCT OR NAME OF CUSTOMER/PROJECT Hkkjr gsoh bystDV dYI fyfeVsm Hkksk BHARAT HEAVY ELECTRICALS LTD. BHOPAL		SWE SWM TCX		SWE SWM TCX		REV. DATE. ALTERED - CHECKED - APPD -		ZONE	
uke/NAME glrk-/SIGN. fmkdk/DATE PKD Sd/- 29.05.18 JAG Sd/- 29.05.18 SKP Sd/- 29.05.18		sukk DRN. 29.05.18 fWjgk CXD. 29.05.18 Lond f APPD. 29.05.18		Hkkj (fjzrk) SCALE 9.77 NTS		REV. DATE. ALTERED - CHECKED - APPD -		ZONE	
osf, dh latik NO.OF VAR 00		vjzrk REF TO ASSY.DRG. 35170300027 & 35170300049		vjzrk REF TO ASSY.DRG. 35170300027 & 35170300049		REV. DATE. ALTERED - CHECKED - APPD -		ZONE	
80-dh-lik ITEM NO. 001		vjzrk dz-/DRAWING NO. Insulator Cover		vjzrk dz-/DRAWING NO. Insulator Cover		REV. DATE. ALTERED - CHECKED - APPD -		ZONE	
i" B dz-/SHT NO.1 Bksa dh latik/NO.OF SHT.1		i" B dz-/SHT NO.1 Bksa dh latik/NO.OF SHT.1		i" B dz-/SHT NO.1 Bksa dh latik/NO.OF SHT.1		REV. DATE. ALTERED - CHECKED - APPD -		ZONE	