

**BHARAT HEAVY ELECTRICALS LIMITED**

CORPORATE RESEARCH & DEVELOPMENT DIVISION

VIKASNAGAR, HYDERABAD - 500 093, INDIA

PHONES: 23774494 (EXCHANGE)

DIRECT: 23882104/23882204/

23778474/23776772

FAX : 91 40 23770698

RD:DP:MPX:F-04

ENQUIRY

To

Pin

Email :

Attn. .

Enquiry No: Enq Date: Due Date: Delivery By:

350806081 27-JAN-09 24-FEB-09

PLEASE SUBMIT YOUR QUOTATION IN SEALED COVER
 SUPERSCRIBED WITH ENQUIRY NO, ENQUIRY DATE
 AND DUE DATE SUBJECT TO OUR TERMS AND
 CONDITIONS ENCLOSED, FOR THE FOLLOWING
 MATERIALS SO AS TO REACH US ON OR BEFORE THE
 DUE DATE BY 12 NOON. THE TENDERS WILL BE
 OPENED AT 2 PM ON THE SAME DAY

PLEASE GIVE REFERENCE OF ENQ NUMBER , ENQ .DATE AND DUE DATE IN ALL YOUR CORRESPONDENCE
 FOR PROMPT ACTION. IN CASE IF YOU ARE NOT MAKING THE OFFER PLEASE POST A REGRET LETTER AND
 RETURN THE DOCUMENTS.

SL NO	DESCRIPTION / SPECIFICATION	UNIT	QTY
1	SS - CB ENCLOSURE AS PER ENCLOSED DRAWINGS AND PRODUCT SPECIFICATION PSGSG121.DOC: 1. RDDG4353407 0001.dwg, 2. RDDG4353407 0002.dwg 3. RDDG4353407 0003.dwg, 4. RDDG4353407 0004.dwg 5 RDDG4353407 0005.dwg, 6 RDDG4353407 0006.dwg 7 RDDG4353407 0007.dwg, 8 RDDG4353407 0008.dwg 9 RDDG4353407 0009.dwg, 10 RDDG4353407 00010.dwg 11 RDDG4353407 00011.dwg MATERIAL: SS-304 QUALIFYING CRITERIA : The supplier/manufacturer should have at least 3-5 years of prior experience in manufacturing similar pressure vessels (15 bar) with pull out and should have supplied at least 2-3 nos of similar pressure vessels. The relevant P.O's and drawings as support documents shall be attached with the offer. OFFERS WITHOUT SUPPORT DOCUMENTATION FOR QUALIFICATION CRITERIA SPECIFIED ABOVE SHALL NOT BE CONSIDERED.	NO	1

Please submit your offer in Two parts as per enclosed "General Teme and Conditions of enquiry & Contract for the purchase of
 Goods/ Services" in separate sealed covers as detailed below:

1) First cover shall contain a) Technical & Commercial bid, b) Compliance Statement, c) Un-priced Price bid, i.e. a copy of the
 Price bid with the price(s) columns left blank.

2) Second Cover containing Price bid.

If the Price bid is found to be different from the un-Priced Price bid in any way, the offer will be rejected.

3) Manufacturer's Test Certificate : REQUIRED

4) BHEL Reserves the right to procure the above items through REVERSE AUCTION.

Note:

1) Unsigned offer(s) are liable for rejection.

2) Taxes & Duties quoted will be taken for cost evaluation & order placement and no change will be entertained later except in
 the case of changes made by the Government.

3) Changes in Taxes and Duties because of the changes in Turnover etc. will be to the supplier's account.

4) In case any Taxes/duties exempted, a self declaration for the same may be attached to the offer.

AS WE ARE ENGAGED IN R&D ACTIVITY "C" FORM WILL NOT
 BE ISSUED

Yours faithfully
 for

BHARAT HEAVY ELECTRICALS LTD

PLEASE FILL UP THE ENCLOSED VENDOR REGISTRATION FORM
 AND SEND IT ALONG WITH YOUR QUOTATION. OTHERWISE
 YOUR QUOTATION WILL NOT BE CONSIDERED. (IGNORE THIS IF
 YOU HAVE ALREADY SUBMITTED THIS FORM)

MS JEEVAN JYOTI GS

Sr Manager

Email: jeevan@bhelrnd.co.in

PSGSG121	Process Specifications for SS-CB Enclosure		Drg.No.	RDDG43534070001
			Date	07.01.09
			Product	CGSM-145
1.0	APPLICATION: The SS CB Enclosure (drg. No. RDDG435 3407 0001) is used to house live circuit breaker components, in gas insulation, up to 7 bar. This leak tight assembly shall meet following specification.			
2.0	SPECIFICATIONS:			
2.1	Material: <u>SS--304</u>.			
2.2	Standard seamless / ERW pipe in schedule shall be used for the construction. In case of non-availability of sizes rolled sheet with seam weld is acceptable, and in such case, welding should be done as shown in the drawing (RDDG4353407 0006). The pipe shall be pulled out using hydraulic / spinning equipment as per desired sizes.			
2.3	The flanges as per the drawing shall be manufactured and welded as per the instructions to the tested structure maintaining parallelism of faces, coaxiality and perpendicularity as prescribed. The location of holes shall also be maintained as shown in drawings. Use of proper designed fixture is recommended for larger quantities.			
2.4	Weld splatter, if any, shall be removed by chipping or grinding on completion of the weld. Particular care should be taken to avoid any splatter on the inside of the chamber, at the joint or other locations.			
2.5	The welded structure shall be tested for Dye penetration test and report shall be generated and submitted to BHEL.			
2.6	The supplier shall stress relieve the tested component to ensure zero post supply deformation.			
2.7	The enclosure shall be electro-polished/ buffed on the inside surface using moderate current densities.			
Page 1/2	PSGSG121_ss CB enclosure.doc		Signature	

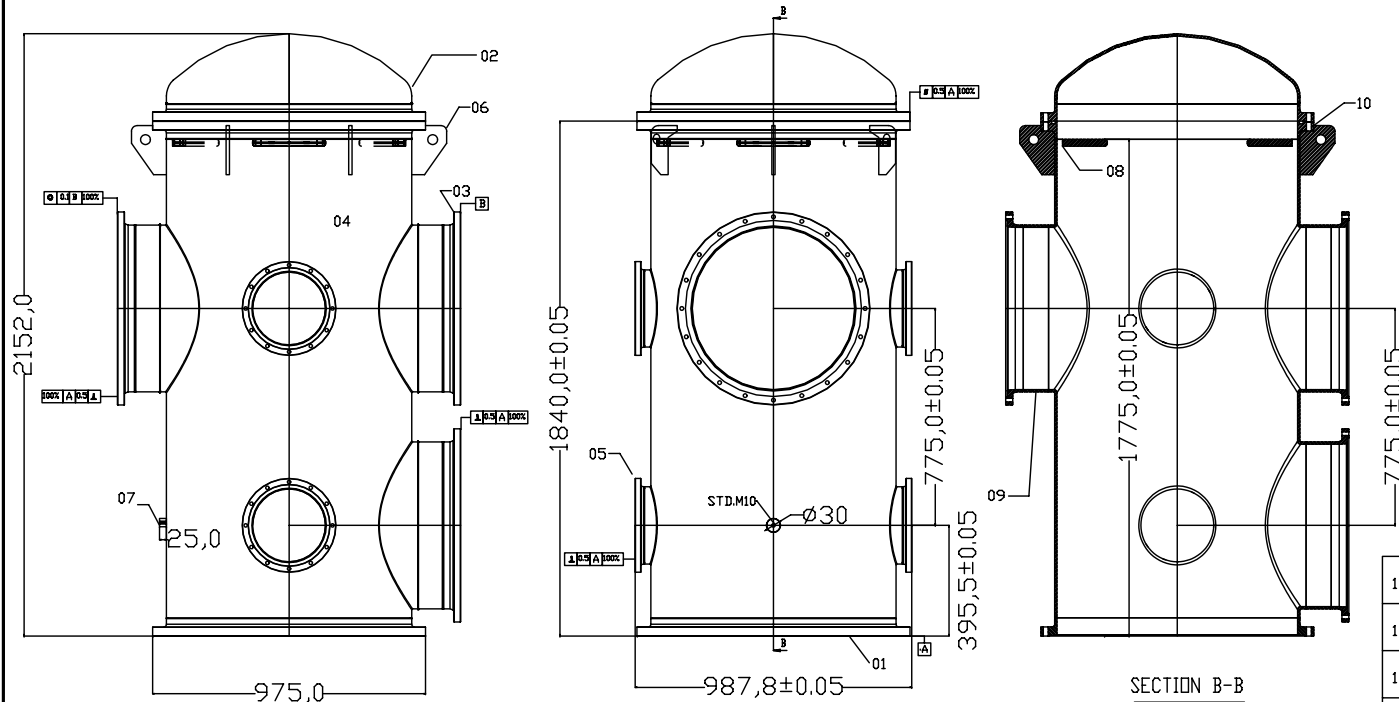
PSGSG121	Process Specifications for SS-CB Enclosure	Drg.No.	RDDG43534070001
		Date	07.01.09
		Product	CGSM-145
2.8	<p>The tested assembly should be cleaned, degreased and prepared for pressure test. The assembly shall be tested at 9 bar pressure for 4 hours and pressure drop shall be recorded and communicated to BHEL. In case of unallowable pressure drop (>0.5%), a coarse leak check shall be performed. The leak shall be rectified and the test repeated to satisfaction. Components indicating drop in pressure during this test will not be accepted. The arrangement shall be kept at 15 bar for 15 minutes prior to this test to verify pressure withstanding capabilities specified in drawing.</p>		
2.9	<p>The assemblies further shall be sand blasted on the outer surface and powder coated (> 50 Micron) to shade as specified on drawing. During this operation flanges shall be masked at the sealing surfaces and at the rim. The powder coating shall be done after trial assembly is completed at BHEL.</p>		
2.10	<p>The dimensional checks and the leak test shall be carried out in presence of BHEL inspector.</p>		
2.11	<p>The accepted component shall be packed in wooden boxes with suitable PVC covers on the flanges to prevent transit damages. A thick polyethylene cover shall be used to seal the component from ingress of moisture and water. For transit time higher than 2-weeks, adequate quantity of moisture absorbent shall also be placed with the component.</p>		
2.12	<p>Material test certificate shall be furnished along with delivery Chelan for acceptance of the component:</p>		
2.13	<p><u>Qualifying Criteria :</u></p> <p>The supplier/manufacturer should have at least 3-5 years of prior experience in manufacturing similar pressure vessels (15 bar) with pull out and should have supplied at least 2-3 nos of similar pressure vessels. The relevant P.O's and drawings as support documents shall be attached with the offer.</p>		
Page 2/2	PSGSG121_ss CB enclosure.doc	Signature	

THE INFORMATION ON THIS DOCUMENT IS THE PROPERTY OF BHARAT HEAVY ELECTRICALS LIMITED. IT MUST NOT BE USED DIRECTLY OR INDIRECTLY IN ANY WAY DETRIMENTAL TO THE INTEREST OF THE COMPANY.

REF. DRG. NO.

SIGN. AND DATE

VENTORY NO.




SECTION B-B

NOTES:

1. ENCLOSURE SHOULD BE PRESSURE TESTED (16 BAR HYD)
2. SHALL BE HELIUM LEAK TESTED FOR 1X10-6 TLS-1
3. SHALL BE SAND BLASTED & POWDER COATED(50 MICRON) ON BOTH SIDES AFTER FABRICATION.
4. ALL SEALING SURFACES SHALL BE MASKED DURING COATING
5. FABRICATION SHALL BE PREFERABLY CARRIED OUT IN DUST FREE AREA.
6. BLANK FLANGES FOR PRESSURE TESTS SHALL BE ARRANGED BY SUPPLIER.
7. MIG WELDING SHOULD BE USED AT ALL WELD JOINTS.
8. VERTICAL FLANGES ARE ASSEMBLED WITH HOLES ROTATED BY 0.5X ANG. PITCH FROM V-AXIS.

12	□-RING	ID 872X10THK					-		
				NITRILE RUBBER			1		
11	HARDWARE	ALLEN HEAD NUTS & BOLTS M16X100					-		
				SS-304			20		
10	FLANGE-M975	RDDG4353407 0011					-		
				SS-304			1		
09	EXTENSION RING	RDDG4353407 0010					-		
				SS-304			3		
08	BRACKET	RDDG4353407 0009					kg		
				SS-304			4		
07	EARTH STUD	==					0.25kg		
				SS-304			1		
06	LIFTING PLATE	RDDG4353407 0008					1.5 kg		
				SS-304			6		
05	FLANGE-335	RDDG4353407 0007					kg		
				SS-304			4		
04	SHELL	RDDG4353407 0006					280Kg		
				SS-304			1		
03	FLANGE-690	RDDG4353407 0005					Kg		
				SS-304			3		
02	DISH ASSY	RDDG4353407 0003					- kg		
				SS-304			1		
01	FLANGE-F975	RDDG4353407 0002					35.0kg		
				SS-304			1		

			01	FLANGE-F975		RDDG4353407 0002					35.0kg			
								SS-304			1			
VAR.00	REMARKS	VAR NO.	ITEM NO.	DESCRIPTION	STD	DRAWING NO.	IT.NO.	MATL. CODE	A	UNIT	UNIT WT.			
							VAR	MATL. SPECN.	C		QTY.		GS	ZONE

TYPE OF PRODUCT		3-Ø COMPACT CB							
NAME OF CUSTOMER									
		BHARAT HEAVY ELECTRICALS LTD. HYDERABAD			DRN	NAME SNK	SIGN.	DATE 24/01/09	NO.OF VAR.
					CKD	SKP			0
					APPD	SVK			
DEPT	SSG	GRADE OF TOL. DIM.	SCALE	WEIGHT(KG)	REF. TO		ITEM NO.	NO.OF ITEMS	
CODE	35	C/M/F	1:1	-	RDDG4353407 0000		-	1	
TITLE				CARD CODE	DRAWING NO.		REV.		
CB ENCLOSURE					RDDG4353407 0001		0		
				SHEET NO.		NO. OF SHEETS			

REV.	DATE	ALTERED	REV.	DATE	ALTERED
		CHECKED			CHECKED
ZONE				ZONE	

THE INFORMATION ON THIS DOCUMENT IS THE PROPERTY OF BHARAT HEAVY ELECTRICALS LIMITED.
IT MUST NOT BE USED DIRECTLY OR INDIRECTLY IN ANY WAY DETRIMENTAL TO THE INTEREST OF THE COMPANY.

REF. DRG. NO.

SIGN. AND DATE

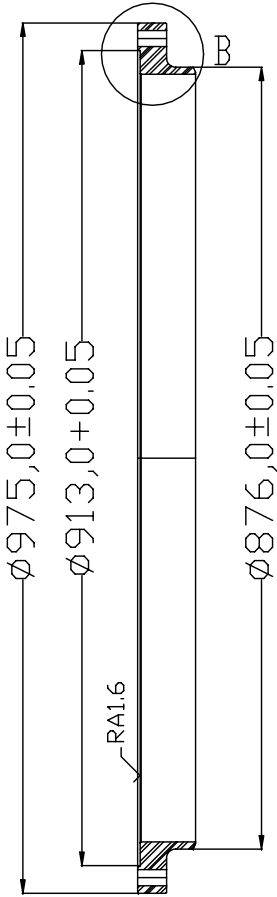
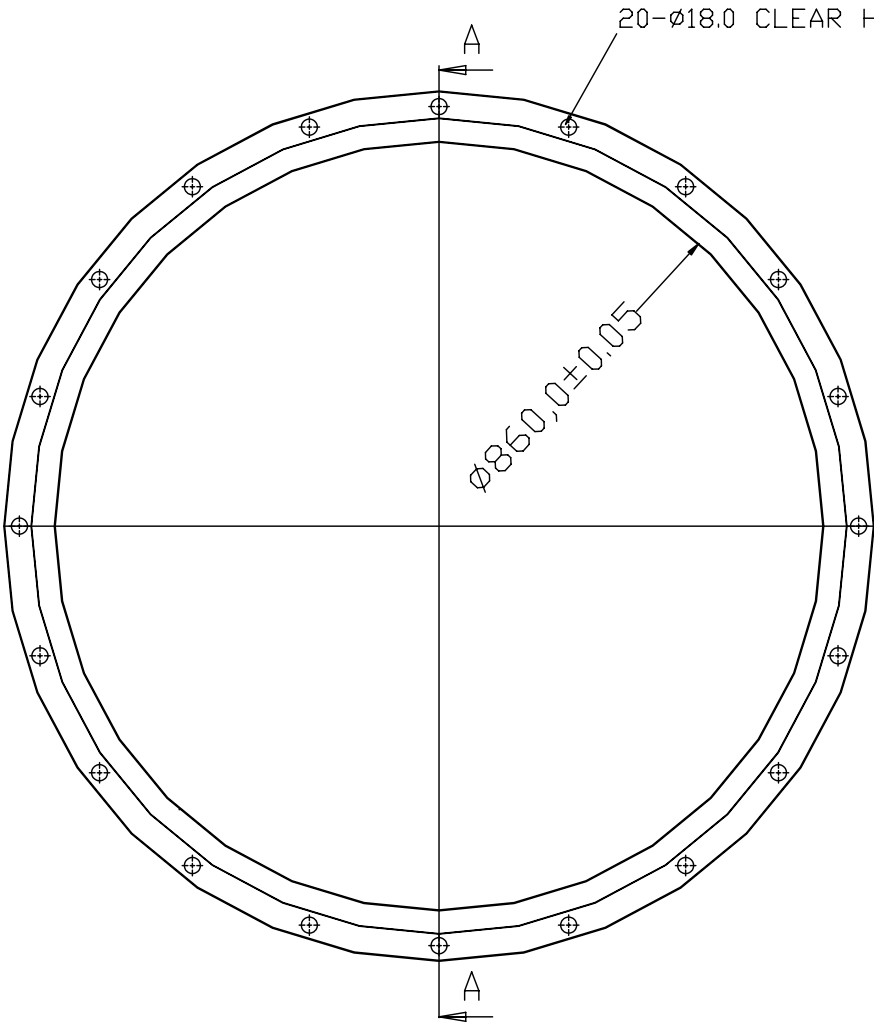
INVENTORY NO.

RDDG4353407 0002
DRG. NO.

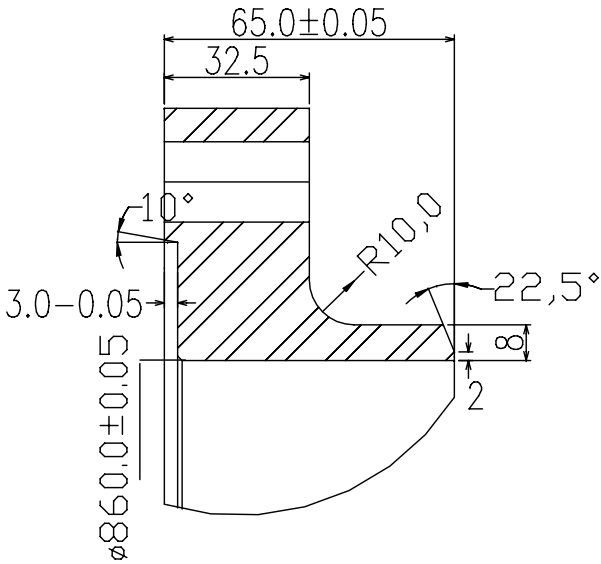
FIRST ANGLE PROJECTION

(ALL DIMENSIONS ARE IN mm)

(~3.2)



SECTION A-A



DETAIL B

			01	BLANK	1000x1000x65thk		S/S-304(ANNEALED)		522 kG		
							AA1215XX		1		
VAR.00	REMARKS	VAR NO.	ITEM NO.	DESCRIPTION	STD	DRAWING NO.	IT.NO.	MATL. CODE	A C	UNIT	UNIT WT.
							VAR	MATL. SPECN.			QTY.
											GS
											ZONE

TYPE OF PRODUCT		3- \varnothing COMPACT GCB									
NAME OF CUSTOMER											
		BHARAT HEAVY ELECTRICALS LTD.		DRN	NAME	SIGN.	DATE	NO.OF			
		HYDERABAD		CKD	SNK		05.01.09	VAR.			
				APPD	SVK						
DEPT. GSG	GRADE OF TOL. DIM. C/M/F	SCALE	WEIGHT(KG)	REF. TO		ITEM NO.		NO.OF			
CODE 35		1:1	35	RDDG4353407 0001		01		1			
TITLE		CARD CODE		DRAWING NO.		REV.					
FLANGE-F975				RDDG4353407 0002		0					
SHEET NO. 1		NO. OF SHEETS 1									

Note: REMOVE ALL SHARP CORNERS 0.8 X 45°

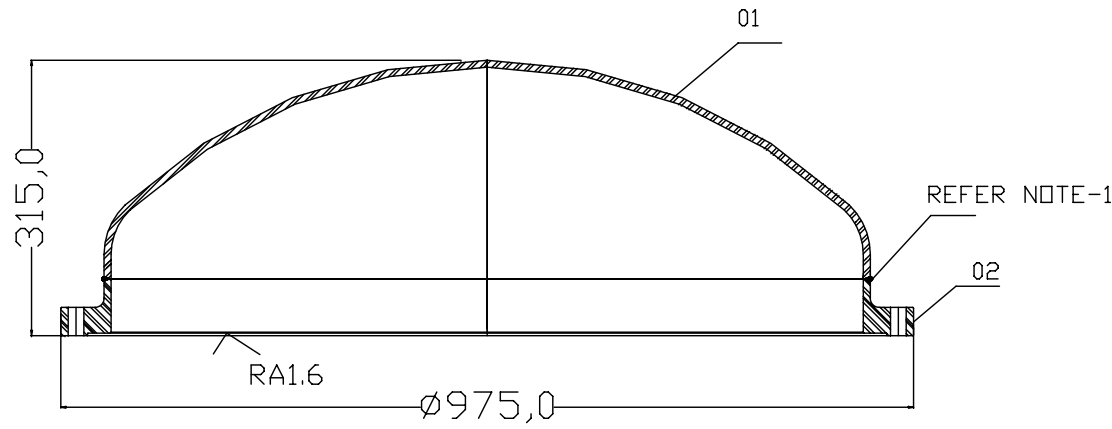
REV.	DATE	ALTERED	REV.	DATE	ALTERED
		CHECKED			CHECKED
ZONE			ZONE		

THE INFORMATION ON THIS DOCUMENT IS THE PROPERTY OF BHARAT HEAVY ELECTRICALS LIMITED.
IT MUST NOT BE USED DIRECTLY OR INDIRECTLY IN ANY WAY DETRIMENTAL TO THE INTEREST OF THE COMPANY.

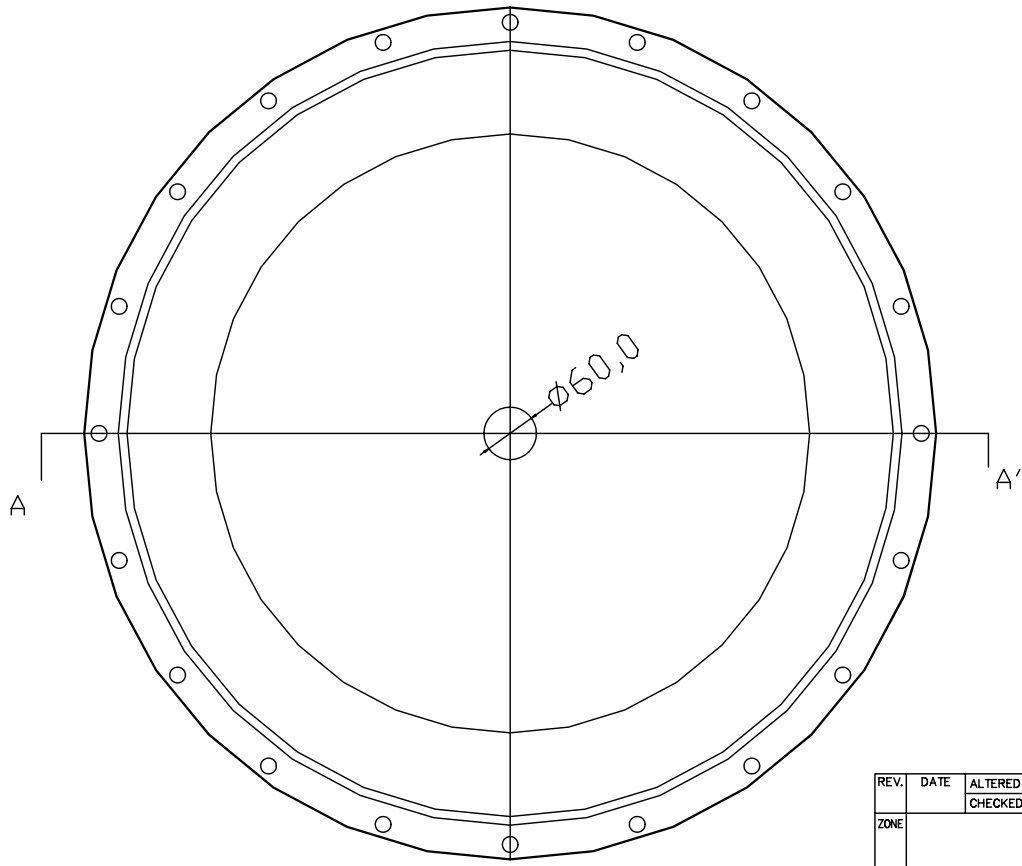
DRG. NO. RDDG4353407 0003

FIRST ANGLE PROJECTION

(ALL DIMENSIONS ARE IN mm)



SECTION-AA'



- Note: 1. MIG WELDING TO BE DONE THROUGH OUT THE CONTACT SURFACE BETWEEN FLANGE AND DISH.
2. ALL SHARP CORNERS ARE CHAMFERED TO 0.8X45°

		02	DISH	RDDG4353407 0004		SS-304		kg	
		01	FLANGE-F975	RDDG4353407 0002		SS-304		35.0kg	
								1	
VAR.00	REMARKS	VAR NO.	ITEM NO.	DESCRIPTION	STD	DRAWING NO.	IT.NO.	MATL. CODE	UNIT
							VAR	MATL. SPECN.	QTY.

TYPE OF PRODUCT									
NAME OF CUSTOMER									
3-Ø COMPACT CB									
		BHARAT HEAVY ELECTRICALS LTD.		DRN	NAME	SIGN.	DATE	NO.OF	
		HYDERABAD		CKD	SNK		080109	VAR.	
				APPD	HSJ			0	
DEPT	GSG	GRADE OF	TOL. DIM.	SCALE	WEIGHT(KG)	REF. TO		ITEM	NO.OF
CODE	35	C/M/F		1:1	-	RDDG4353407 0001		NO.	ITEMS
TITLE					CARD	DRAWING NO.		REV.	
DISH ASSEMBLY					CODE	RDDG4353407 0003		10	
					SHEET NO.		NO. OF SHEETS		

REV.	DATE	ALTERED	REV.	DATE	ALTERED
		CHECKED			CHECKED
ZONE			ZONE		

INVENTORY NO. SIGN. AND DATE REF. DRG. NO.

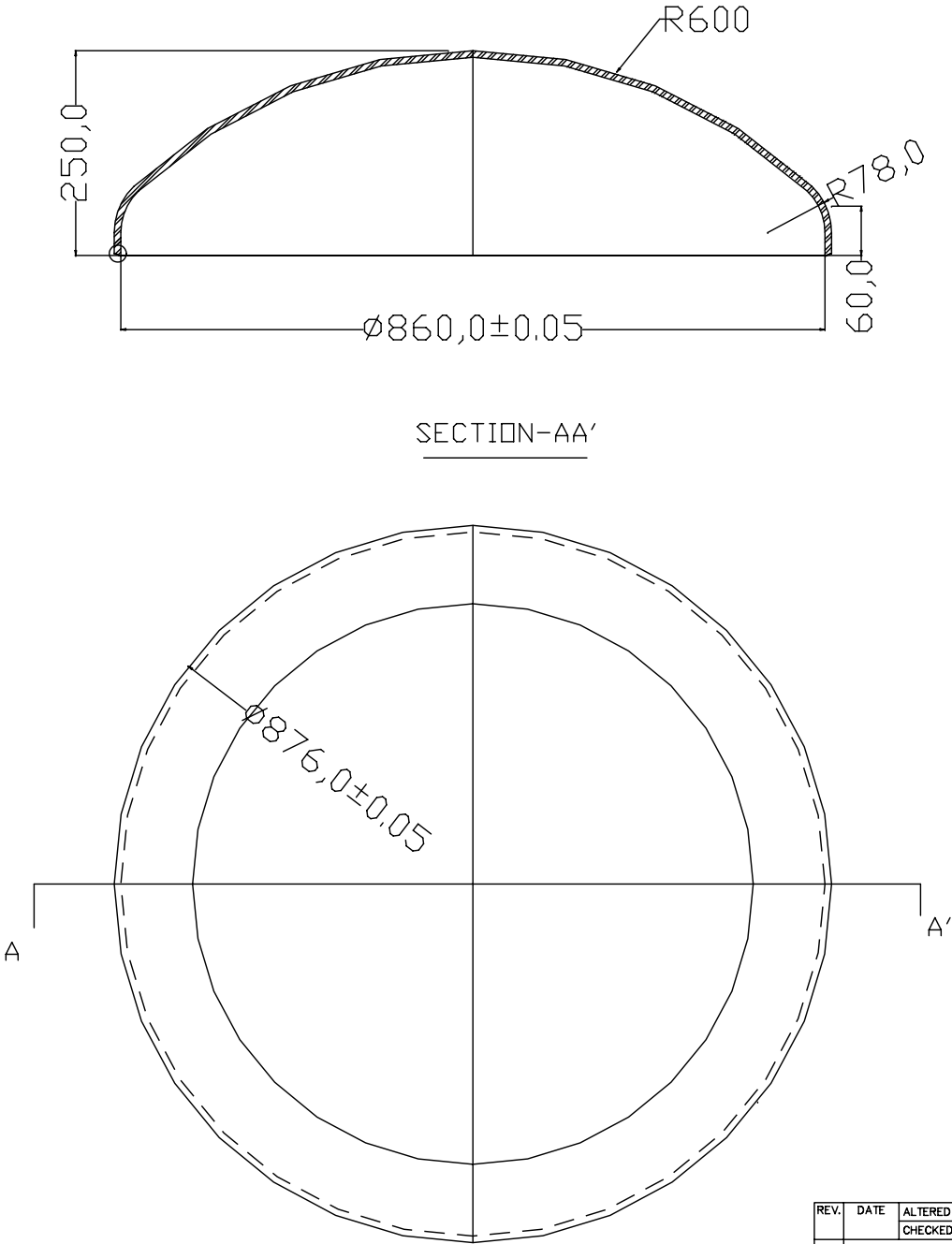
THE INFORMATION ON THIS DOCUMENT IS THE PROPERTY OF BHARAT HEAVY ELECTRICALS LIMITED.
IT MUST NOT BE USED DIRECTLY OR INDIRECTLY IN ANY WAY DETRIMENTAL TO THE INTEREST OF THE COMPANY.

DRG. NO. RDDG4353407 0004

FIRST ANGLE PROJECTION


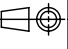
(ALL DIMENSIONS ARE IN mm)

(~3.2)



NOTE 1. ALL SHARP CORNERS ARE CHAMFERED TO 0.8X45°

			01	PLATE	1160X1160X8THK		SS-304		-kg	
									1	
VAR.00	REMARKS	VAR NO.	ITEM NO.	DESCRIPTION	STD	DRAWING NO.	IT.NO.	MATL. CODE	UNIT	QTY.
							VAR	MATL. SPECN.	A/C	GS

TYPE OF PRODUCT		3-Ø COMPACT CB							
NAME OF CUSTOMER									
		BHARAT HEAVY ELECTRICALS LTD.		DRN	NAME	SIGN.	DATE	NO.OF	
		HYDERABAD		CKD	SKP		080109	VAR.	
				APPD	SVK			0	
DEPT. GSG		GRADE OF TOL. DIM. C/M/F		SCALE	WEIGHT(KG)		REF. TO		
CODE 35				1:1	-		RDDG4353407 0003		
TITLE		DISH		CARD CODE		DRAWING NO.		ITEM NO.	
						RDDG4353407 0004		2	
						SHEET NO.		NO. OF SHEETS	
								10	

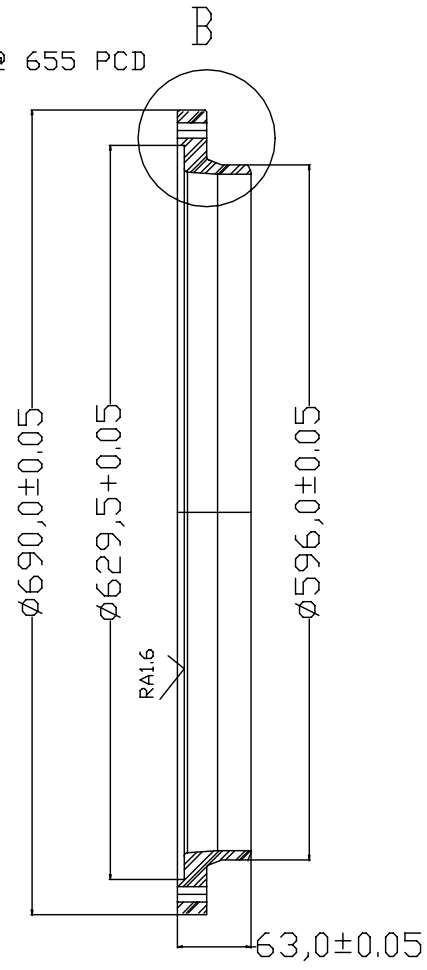
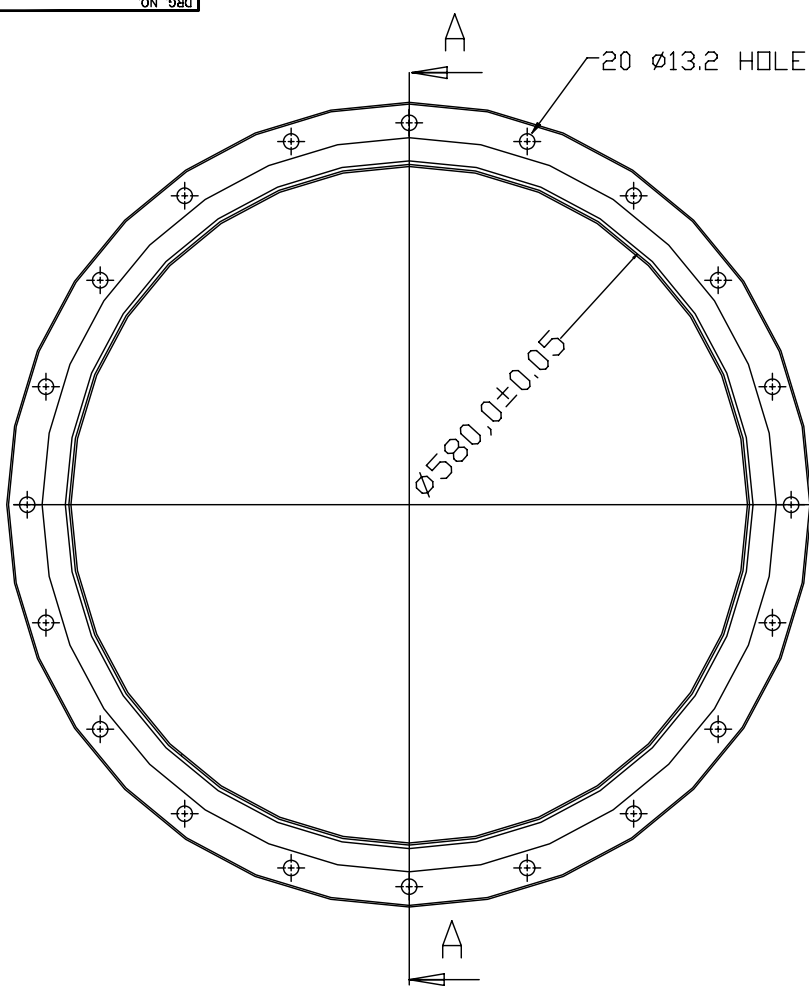
REV.	DATE	ALTERED	REV.	DATE	ALTERED
		CHECKED			CHECKED
ZONE			ZONE		

THE INFORMATION ON THIS DOCUMENT IS THE PROPERTY OF BHARAT HEAVY ELECTRICALS LIMITED.
IT MUST NOT BE USED DIRECTLY OR INDIRECTLY IN ANY WAY DETRIMENTAL TO THE INTEREST OF THE COMPANY.

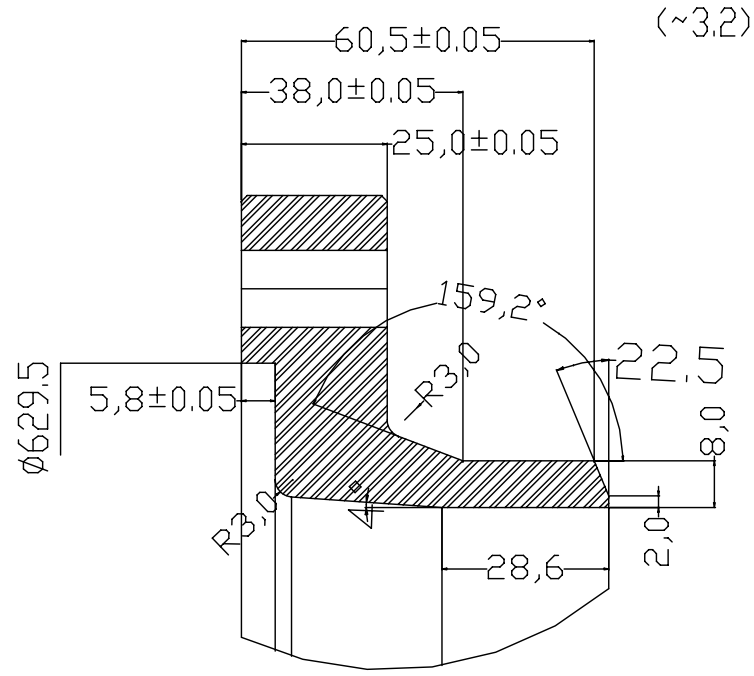
DRG. NO. RDDG4353407 0005

FIRST ANGLE PROJECTION

(ALL DIMENSIONS ARE IN mm)



SECTION A-A

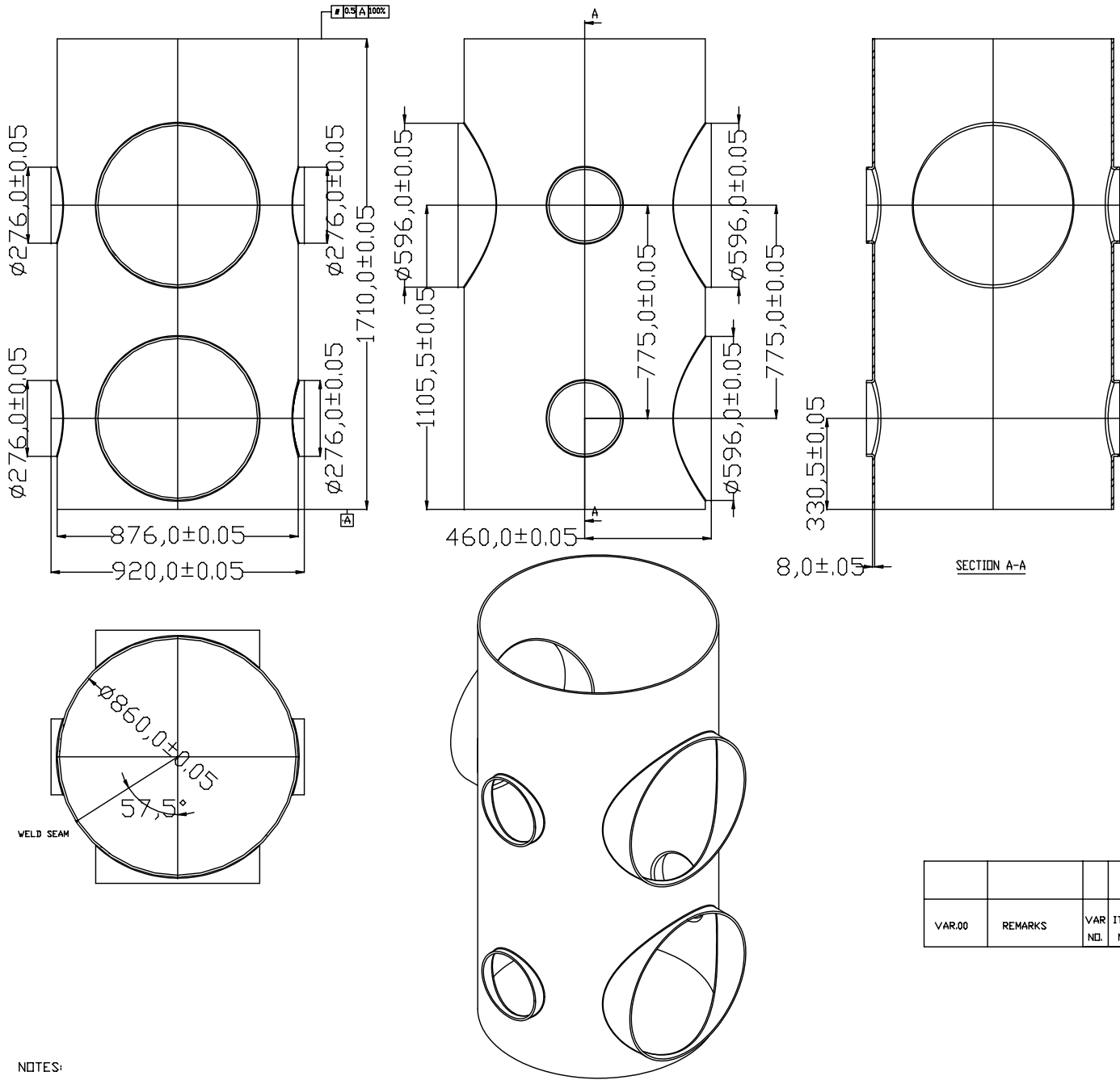


SECTION B-B

			01	PLATE	700X700X65THK		SS-304		256 kg	
									1	
VAR.00	REMARKS	VAR. NO.	ITEM NO.	DESCRIPTION	STD.	DRAWING NO.	IT.ND.	MATL. CODE	UNIT	QTY.
							VAR	MATL. SPECN.	A	GS

NOTE : 1. ALL SHARP CORNERS ARE CHAMFERED TO 0.8X45°


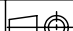
INVENTORY NO.		SIGN. AND DATE		REF. DRG. NO.	
REV.		DATE		ALTERED	
ZONE		ZONE		CHECKED	
REV.		DATE		ALTERED	
ZONE		ZONE		CHECKED	
DEPT. GSG		GRADE OF TOL. DIM. C/M/F		SCALE 1:1	
CODE 35				WEIGHT(KG) -	
TITLE FLANGE-690		CARD CODE		REF. TO RDDG4353407 0001	
				DRAWING NO. RDDG4353407 0005	
				SHEET NO. NO. OF SHEETS	
TYPE OF PRODUCT 3-Ø COMPACT CB		NAME OF CUSTOMER		DATE 05/01/09	
Bharat Heavy Electricals Ltd. Hyderabad		DRN SNK		SIGN.	
CKD SKP		APPD SVK		NO. OF VAR. 0	
ITEM NO. 3		NO. OF ITEMS 3		REV. 0	



NOTES:

1. STANDARD SEAMLESS/ERW PIPE SHALL BE USED.
2. IF DEVELOPED SEAM SHALL BE MIG WELDED, DP TESTED AND RADIOGRAFED
3. ALL EXTENSIONS SHOULD BE PULLED OUT AFTYER WELDING.
4. FIXTURES SHALL BE USED TO RETAIN DIMENSIONS.
- 5 USE CLEAN HR SHEET FOR DEVELOPMENT.

			01	PIPE	Ø860X8 tk- 1710long		SS-304		280.0	
									1	
VAR.00	REMARKS	VAR NO.	ITEM NO.	DESCRIPTION	STD	DRAWING NO.	IT.ND.	MATL. CODE	UNIT	QTY.
							VAR	MATL. SPECN.	A	ZONE

TYPE OF PRODUCT									
NAME OF CUSTOMER									
3-Ø COMPACT GCB									
 BHARAT HEAVY ELECTRICALS LTD. HYDERABAD				DRN	NAME	SIGN.	DATE	NO.OF	
				CKD	SNK		060109	VAR.	
				APPD	SKP				
					SVK				
DEPT.	GRADE OF			SCALE	WEIGHT(KG)	REF. TO		ITEM	NO.OF
GSG	TOL. DIM.								
CODE	C/M/F			1:1	280.0	RDDG4353407 0001		04	1
TITLE				CARD CODE	DRAWING NO.			REV.	
SHELL					RDDG4353407 0006			0	
					SHEET NO. 1			NO. OF SHEETS 1	

REV.	DATE	ALTERED	REV.	DATE	ALTERED
		CHECKED			CHECKED
ZONE			ZONE		

DRG. NO.

(ALL DIMENSIONS ARE IN mm)

 (~ 3.2)

USE 0.4 X 45° CHAMFER

$\varnothing 260,0 \pm 0,05$

 $\varnothing 335,0 \pm 0,05$ $\phi 276,0 \pm 0,05$
$$0291,0+0,1-$$

SECTION A-A

 $-33,9 \pm 0,05$

54X80

—20,0

1028


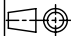
9

SECTION B-B

0,8X45°

R30

			01	ROUND		ø350X35THK		SS-304		28 kg		
										1		
VAR.00	REMARKS	VAR NO.	ITEM NO.	DESCRIPTION	STD	DRAWING NO.	IT.NO.	MATL. CODE	A UNIT	UNIT WT.		
							VAR	MATL. SPECN.	C	QTY.		

TYPE OF PRODUCT		3-Ø COMPACT CB						
NAME OF CUSTOMER								
		BHARAT HEAVY ELECTRICALS LTD. HYDERABAD		DRN	NAME SKN	SIGN.	DATE 050109	NO. OF VAR.
				OKD	SKP			0
				APPD	SVK			
DEPT GSG	GRADE OF TOL. DIM. C/M/F		SCALE	WEIGHT(KG)	REF. TO	ITEM NO.	NO. OF ITEM	
CODE 35			1:1	—	RDDG4353407 0001	5	4	
TITLE				CARD CODE	DRAWING NO.	REV		
FLANGE-335					RDDG4353407 0007	0		
				SHEET NO.		NO. OF SHEETS		

REV.	DATE	ALTERED	REV.	DATE	ALTERED
		CHECKED			CHECKED
ZONE			ZONE		

NOTE : 1. ALL SHARP CORNERS ARE CHAMFERED TO 0.8X45°

THE INFORMATION ON THIS DOCUMENT IS THE PROPERTY OF BHARAT HEAVY ELECTRICALS LIMITED. IT MUST NOT BE USED DIRECTLY OR INDIRECTLY IN ANY WAY DETRIMENTAL TO THE INTERESTS OF THE COMPANY.

REF. DRG. NO.

SIGN. AND DATE

INVENTORY NO.

THE INFORMATION ON THIS DOCUMENT IS THE PROPERTY OF BHARAT HEAVY ELECTRICALS LIMITED.
IT MUST NOT BE USED DIRECTLY OR INDIRECTLY IN ANY WAY DETRIMENTAL TO THE INTEREST OF THE COMPANY.

INVENTORY NO.	SIGN. AND DATE	REF. DRG. NO.
---------------	----------------	---------------

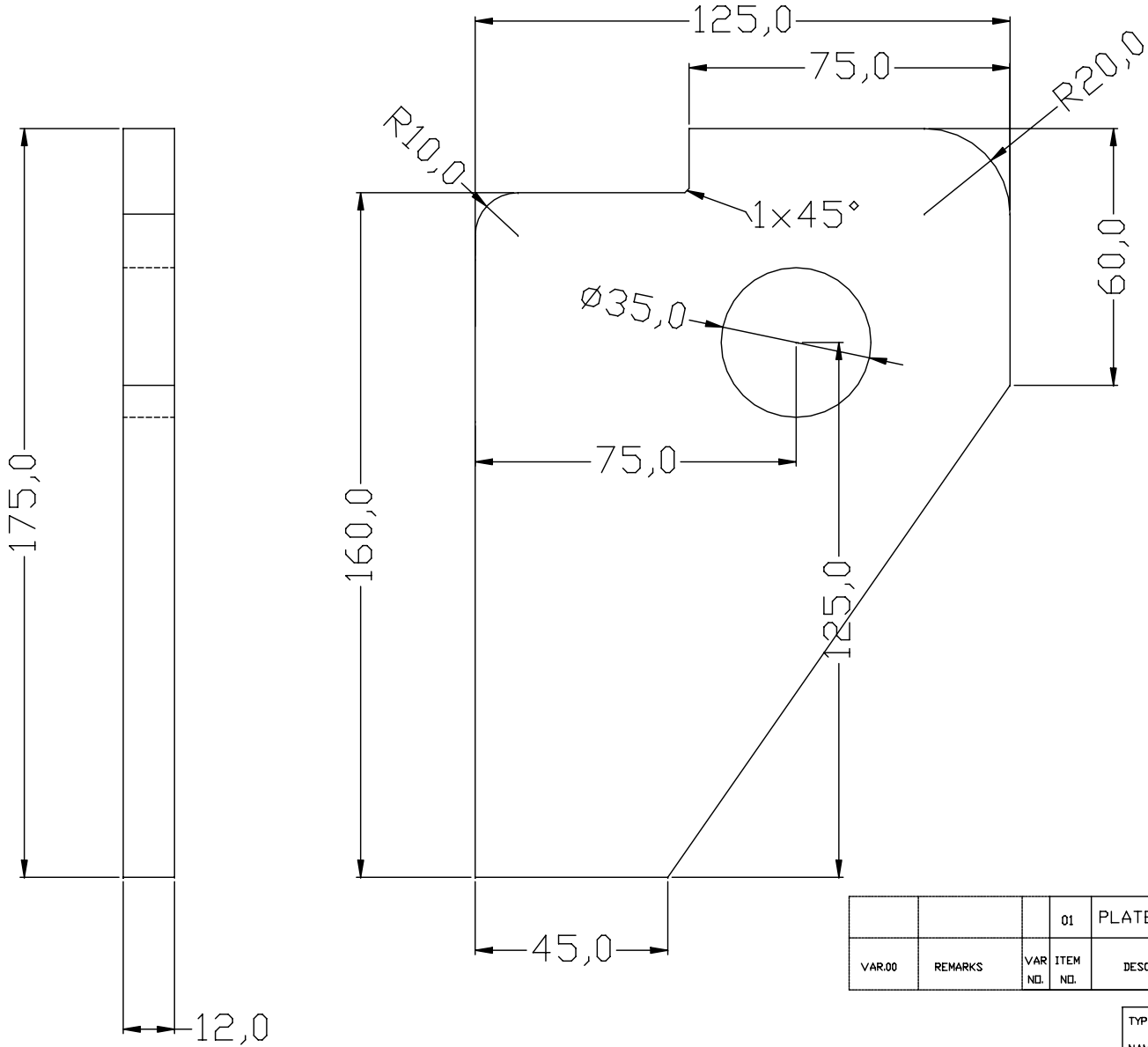
NOTE : 1. ALL SHARP CORNERS ARE CHAMFERED TO 0.8X45°

DRG. NO. RDDG4353407 0008

FIRST ANGLE PROJECTION

(ALL DIMENSIONS ARE IN mm)

(~3.2)



VAR.00	REMARKS	VAR. NO.	ITEM NO.	01	PLATE	175x125X12THK	SS-304	2.5 kg	1	UNIT	QTY.	GS	ZONE
					DESCRIPTION	DRAWING NO.	IT.ND.	MATL. CODE					
							VAR	MATL. SPECN.					

TYPE OF PRODUCT		3-Ø COMPACT CB											
NAME OF CUSTOMER		BHARAT HEAVY ELECTRICALS LTD. HYDERABAD											
DEPT. GSG		GRADE OF TOL. DIM. C/M/F		SCALE 1:1		WEIGHT(KG) 1.5		REF. TO RDDG4353407 0001		ITEM NO. 6		NO. OF ITEMS 6	
CODE 35								DRAWING NO. RDDG4353407 0008		REV. 10			
TITLE LIFTING PLATE		CARD CODE		SHEET NO.		NO. OF SHEETS							

REV.	DATE	ALTERED	REV.	DATE	ALTERED
		CHECKED			CHECKED
ZONE			ZONE		

THE INFORMATION ON THIS DOCUMENT IS THE PROPERTY OF BHARAT HEAVY ELECTRICALS LIMITED.
IT MUST NOT BE USED DIRECTLY OR INDIRECTLY IN ANY WAY DETRIMENTAL TO THE INTEREST OF THE COMPANY.

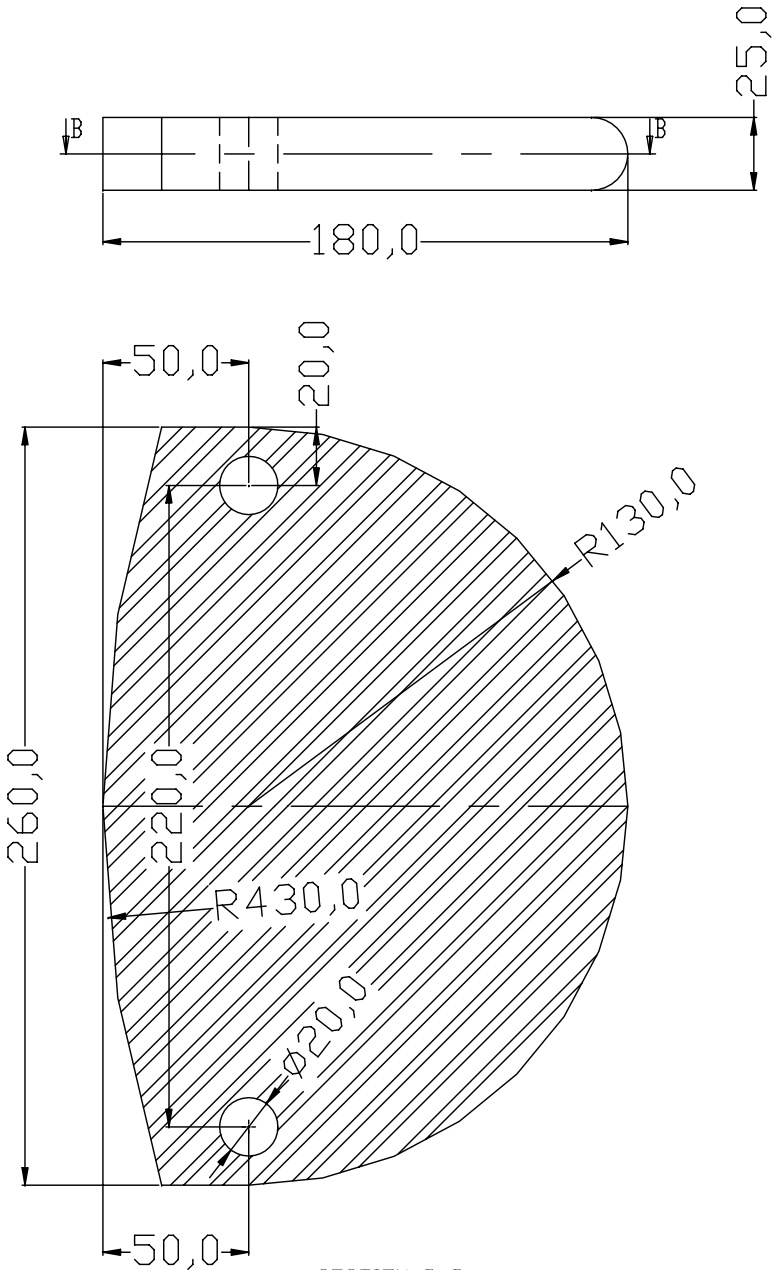
INVENTORY NO. SIGN. AND DATE REF. DRG. NO.

0000 RDDG4353407 0009 DRG. NO.

FIRST ANGLE PROJECTION

(ALL DIMENSIONS ARE IN mm)


(~3.2)



SECTION B-B

NOTE : 1. ALL SHARP CORNERS ARE CHAMFERED TO 0.8X45°

			01	PLATE	200X280X30THK		SS-304		14.0kg	
									1	
VAR.00	REMARKS	VAR NO.	ITEM NO.	DESCRIPTION	STD	DRAWING NO.	IT.NO.	MATL. CODE	UNIT	UNIT WT.
							VAR	MATL. SPECN.	A	QTY.

TYPE OF PRODUCT		3-Ø COMPACT CB							
NAME OF CUSTOMER									
		BHARAT HEAVY ELECTRICALS LTD.		DRN	NAME	SIGN.	DATE	NO.OF	
		HYDERABAD		CKD	SNK		050109	VAR.	
				APPD	SKP			0	
					SVK				
DEPT. GSG		GRADE OF TOL. DIM. C/M/F		SCALE 1:1		WEIGHT(KG) -		REF. TO	
CODE 35								RDDG4353407 0001	
TITLE		BRACKET		CARD CODE		DRAWING NO.		ITEM NO.	
						RDDG4353407 0009		8	
						SHEET NO.		NO. OF SHEETS	

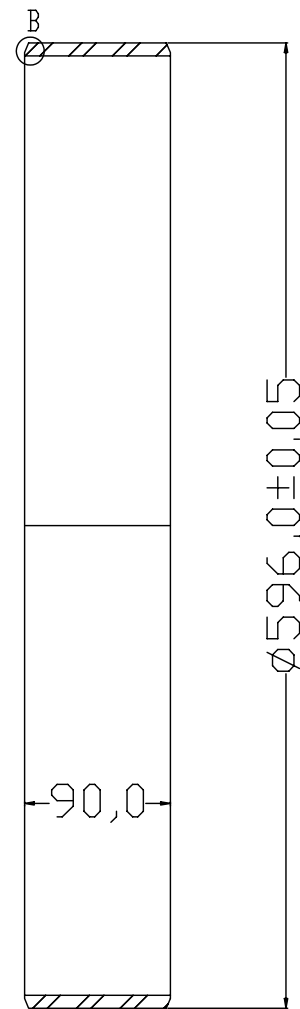
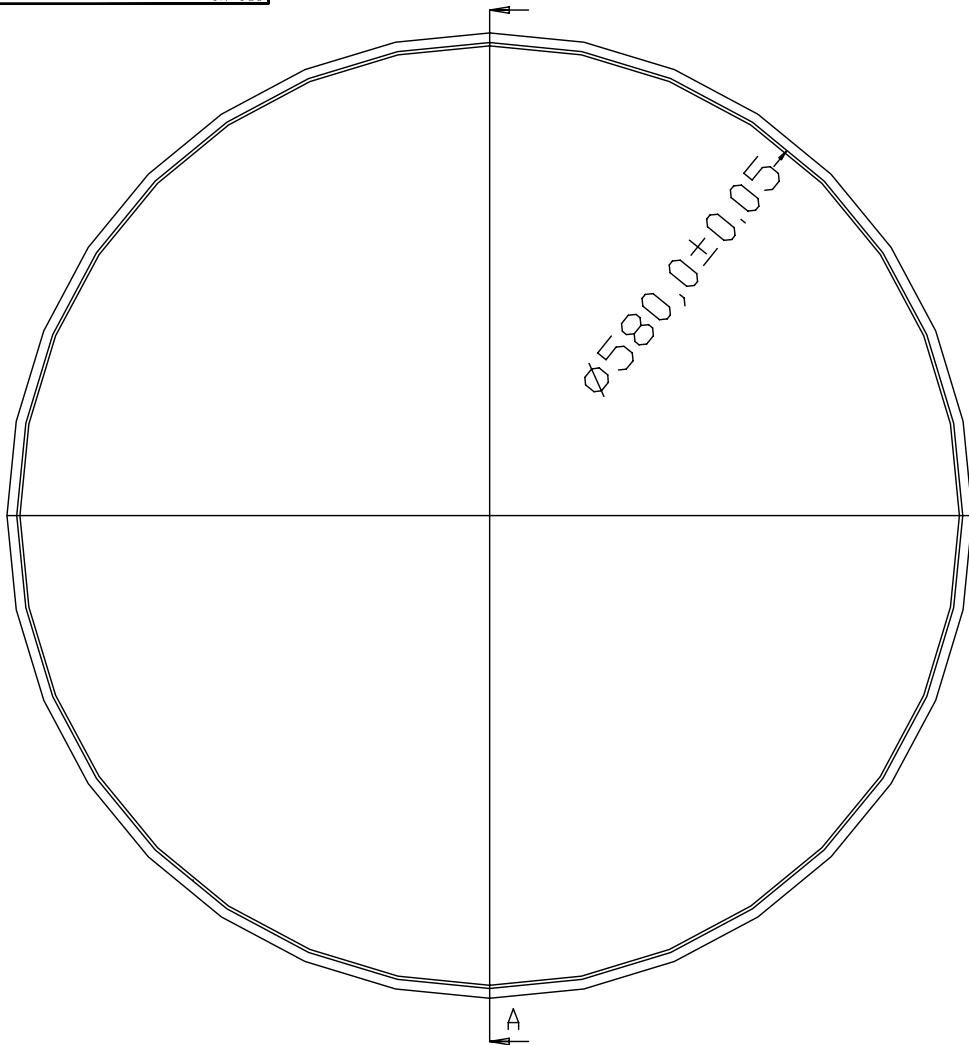
REV.	DATE	ALTERED	REV.	DATE	ALTERED
		CHECKED			CHECKED
ZONE			ZONE		

DRG. NO. RDDG4353407 0010

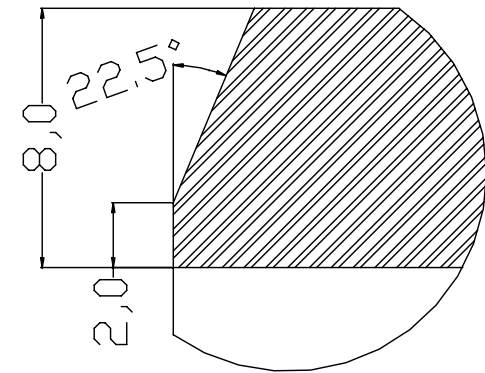
FIRST ANGLE PROJECTION

(ALL DIMENSIONS ARE IN mm)

(~3.2)





SECTION A-A



DETAIL B

			01	ROUND		Ø596X90THK		SS-304		227 kg		
										1		
VAR.00	REMARKS	VAR NO.	ITEM NO.	DESCRIPTION	STD	DRAWING NO.	IT.ND.	MATL. CODE	A	UNIT	UNIT WT.	ZONE
							VAR	MATL. SPECN.	C		QTY.	GS

TYPE OF PRODUCT		3-Ø COMPACT CB				
NAME OF CUSTOMER						
		BHARAT HEAVY ELECTRICALS LTD.		HYDERABAD		
		DRN	NAME SNK	SIGN.	DATE 050109	NO.OF VAR.
		CKD	SKP			0
		APPD	SVK			
DEPT ESG	GRADE OF TOL. DIM. C/M/F		SCALE	WEIGHT(KG)	REF. TO	ITEM NO.
CODE 35			1:1	10.5	RDDG4353407 0001	9
TITLE				CARD CODE	DRAWING NO.	REV.
EXTENSION RING					RDDG4353407 0010	0
				SHEET NO.		NO. OF SHEETS

REV.	DATE	ALTERED	REV.	DATE	ALTERED
		CHECKED			CHECKED
ZONE			ZONE		

NOTE : 1. ALL SHARP CORNERS ARE CHAMFERED TO 0.8X45°

THE INFORMATION ON THIS DOCUMENT IS THE PROPERTY OF BHARAT HEAVY ELECTRICALS LIMITED. IT MUST NOT BE USED DIRECTLY OR INDIRECTLY IN ANY WAY DETRIMENTAL TO THE INTEREST OF THE COMPANY.

REF. DRG. NO.

SIGN. AND DATE

INVENTORY NO.

THE INFORMATION ON THIS DOCUMENT IS THE PROPERTY OF BHARAT HEAVY ELECTRICALS LIMITED.
IT MUST NOT BE USED DIRECTLY OR INDIRECTLY IN ANY WAY DETRIMENTAL TO THE INTEREST OF THE COMPANY.

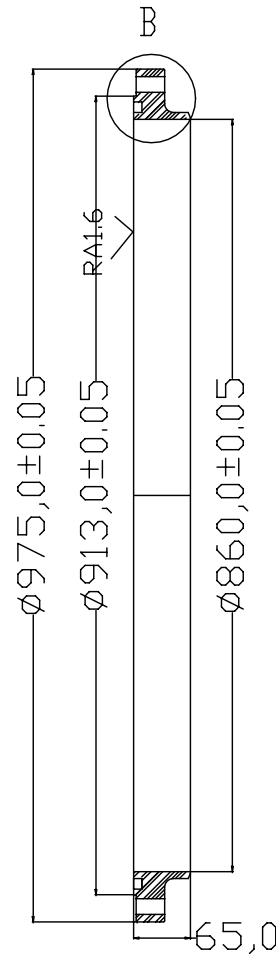
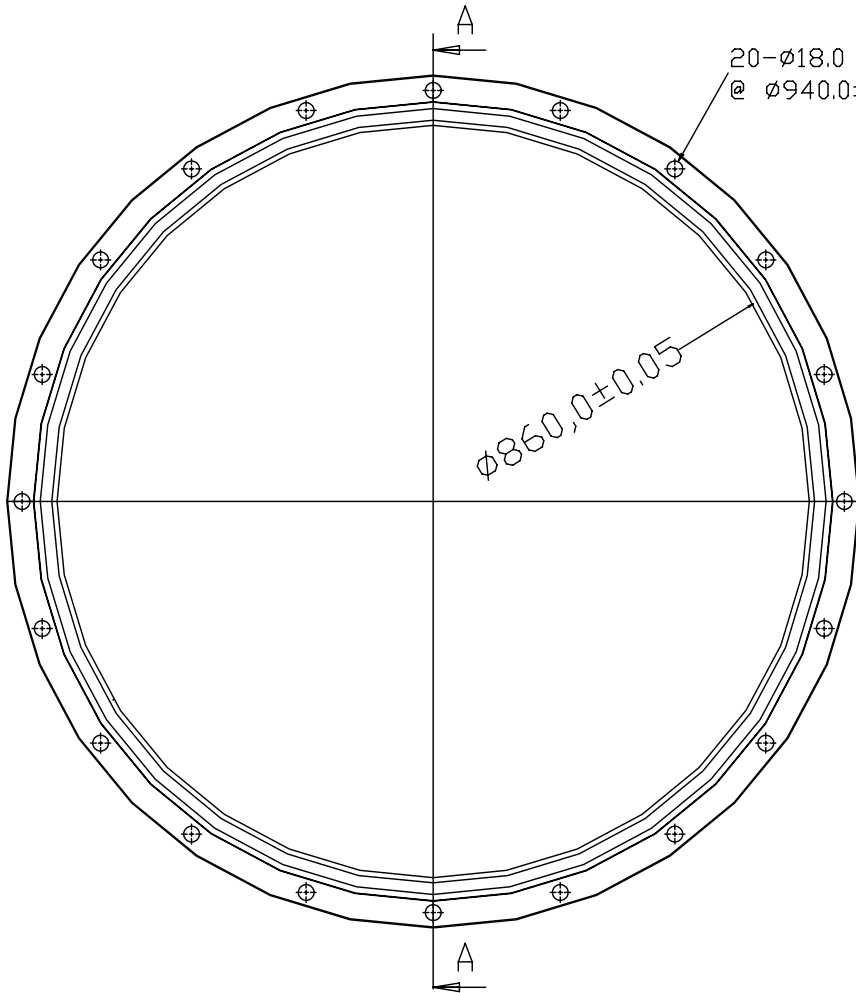
INVENTORY NO. SIGN. AND DATE REF. DRG. NO.

RDDG4353407 0011
DRG. NO.

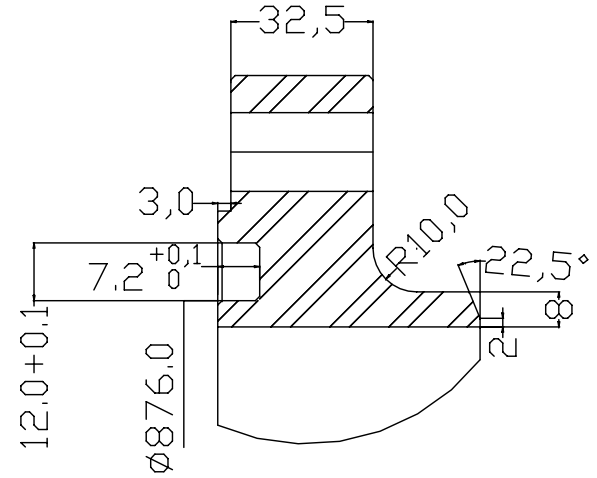
FIRST ANGLE PROJECTION

(ALL DIMENSIONS ARE IN mm)

(~3,2)




SECTION A-A



DETAIL-B

			01	PLATE	1000X1000X65THK		SS-304		522 kg	
									1	
VAR.00	REMARKS	VAR. NO.	ITEM NO.	DESCRIPTION	STD.	DRAWING NO.	IT.ND.	MATL. CODE	UNIT	QTY.
							VAR	MATL. SPECN.	A	GS

TYPE OF PRODUCT		3-Ø COMPACT CB							
NAME OF CUSTOMER									
		BHARAT HEAVY ELECTRICALS LTD.		DRN	NAME	SIGN.	DATE	NO. OF	
		HYDERABAD		CKD	SKP		240109	VAR.	
				APPD	SVK			0	
DEPT.	GSG	GRADE OF	TOL. DIM.	SCALE	WEIGHT(KG)	REF. TO		ITEM	NO. OF
CODE	35	C/M/F		1:1	-	RDDG4353407 0001		NO.	ITEMS
TITLE		CARD CODE		DRAWING NO.		REV.			
FLANGE-M975				RDDG4353407 0011		0			
SHEET NO.		NO. OF SHEETS							

NOTE : 1. ALL SHARP CORNERS ARE CHAMFERED TO 0.8X45°

REV.	DATE	ALTERED	REV.	DATE	ALTERED
		CHECKED			CHECKED
ZONE			ZONE		

AUTHORISATION LETTER FOR E-PAYMENT/ NEFT / RTGS

(PLEASE FILL UP THE FORM COMPLETELY IN CAPITAL LETTERS ONLY)

1	Type of Request (Tick One)	NEW / CHANGE
2	BHEL Vendor Code	
3	Company's Name	
4	Address	
5	City with Pin Code	
6	State	
7	PAN NUMBER	
8	Name of Contact Person	
9	Phone No with STD Code	
10	Fax No with STD Code	
11	Email Id	
12	Web Site (URL)	

BANK DETAILS FOR EFT / RTGS

1	Bank Name	
2	Branch	
3	Branch Code	
4	Address	
5	PHONE No.	
6	Account No.	
7	MICR/ IFSC Code	
8	Bank Swift Code	
8	NEFT/ RTGS enabled	Yes / No
10	Cancelled Cheque	Enclosed / Not Enclosed

1. I, as representative / owner of the above named company, hereby authorise BHEL R&D Hyderabad, to electronically make payments to the designated bank account. I hereby certify that the particulars given above are true, complete and correct.
2. If the transaction is delayed or not effected at all for reasons of incomplete or incorrect information, I would not hold BHEL / transferring Bank responsible.
3. This authority remains in full force until BHEL receives and acknowledge written notification requesting a change or cancellation.

Date:

Authorised Signatory
Designation :

COMPANY SEAL



BHARAT HEAVY ELECTRICALS LIMITED
CORPORATE R&D DIVISION, VIKAS NAGAR, HYDERABAD – 500 093, AP, India
Ph: 0091-40 – 23778474, FAX: 0091-40 – 23770698

RD:MPX:F-20

General Terms and Conditions of Enquiry & Contract for the Purchase of Goods/ Services

1. The quotation and any order resulting from this enquiry shall be governed by these General Terms and Conditions of enquiry and contract for the supply of goods and the supplier quoting against this enquiry shall, unless specifically stipulates any different terms or conditions, be deemed to have read and agreed to the same.
2. Sealed quotations in double cover with tenderer's distinctive seal, superscribing enquiry number, date and due date are to be submitted so as to reach on or before due date & time, addressed to **Additional General Manager(MM) and Head, Bharat Heavy Electricals Limited, Corporate Research & Development Division, Vikasnagar, Hyderabad, Andhra Pradesh, India – PIN-500 093, India.**
In the case of **Two-part bid**, each inner cover shall clearly be labeled as a) **Technical & Commercial Bid** containing technical data/ drawings/ catalogues/ quality plans along with commercial terms and conditions & copy of the price bid with the price columns left blank (unpriced price bid), b) **Price bid** containing prices quotes. Installation and/or Commissioning charges shall be spelt out in absolutely lucid terms, taking into account total charges, rather than quoting vaguely, such as charges per man-day or charges per engineer per day etc. **If the price bid was found later to be different from the unpriced price bid in any way, the offer will be rejected summarily.**
3. **Tender/ Technical bid Opening:** Unless specified otherwise, tenders/ technical bids will be opened on appointed date and time as mentioned in the enquiry or as communicated changed date/time, if any, in the presence of such of those tenderers who may be present.
4. **Delayed/ Late Tender:** Tenders, which have been posted by registered post through the postal department in time before opening date but received after tender opening, shall be treated as regular tenders. Other tenders received after tender opening time shall be treated as late tenders and normally they may be rejected.
5. The Quotation should be free from overwriting and erasures. Corrections and additions, if any, must be attested. Supplier should indicate in the quotation dimensions (Size), weight, rate etc., in the metric system unless the enquiry calls for different unit.
6. **Validity of Quotation:** All quotations shall be kept open for acceptance for a period of ninety days from the date of opening of Tenders/ Technical bid and this shall be deemed to be an express condition of all quotations. The rate shall be quoted in both figures and in words.
7. In the case of Two-part bid, the vendor should furnish technical clarifications, if any, within stipulated time mentioned, failing which, it will be construed that the vendor is not interested in the tender and BHEL shall not consider the offer for further evaluation.
8. **Revision of Pricebid:** In the event of any bidder, after finalizing the technical specifications and scope of supply, opting to revise and submit their latest price bid, then BHEL reserves the right to open their original / previous price bid also while evaluating revised bid.
9. **Pricebid Opening:** Unless specified otherwise in the enquiry, the Price bids of technically qualified vendors shall be opened with prior intimation in the presence of such of those tenderers who may be present.
10. **Conformity to Specifications:** The material should be of the best quality and shall be conforming to our specification given in our enquiry. Unless otherwise agreed upon by BHEL, no payment shall be due by BHEL in respect of any sample. Offers without details of specifications/ applicable catalogues will not be considered and are liable to be rejected.
11. **Terms of Delivery:** All suppliers shall quote the lowest prices on ex-works and FOB/FCA basis. Foreign suppliers will also indicate their Indian agent's name and address with percentage of agency commission out of the quoted price, if any. Name and Address of the supplier's Bankers address should also be given. Indian suppliers for the indigenously manufactured/ imported stock shall quote on Ex-works /Free-on-Rail/Road /FOR-destination basis, indicating packing & forwarding charges, if any, separately.
12. **Taxes and Duties:** Unless specified otherwise in the enquiry, BHEL do not provide "C" or "D" Form as it is engaged in R&D. All Indian suppliers shall clearly mention current Sales Tax/ VAT, Excise Duty, and Service Tax etc, if any, payable in addition to the quoted price and indicate applicable rates/ percentage, item-wise clearly. It will be paid only if Registration Number under State(TIN)/ Central Sales Tax or Service Tax is specifically mentioned in the Bill/Invoice. Vendors without a Sales Tax/VAT registration and applicable Service Tax registration will not be considered.
13. **Insurance:** Insurance will be arranged by BHEL in case of Ex-Works as well as FOB basis supplies.
14. **Terms of Payment:** Full payment will be made within 30 days after receipt, inspection and acceptance of the material (and where involved, Erection and commissioning of the material/ equipment at BHEL/Destination) though Electronic Fund transfer (RTGS/NEFT/SEFT) with bank charges to the supplier's account. For foreign suppliers, the preferred payment term will be on Sight Draft basis and bank charges inside India will be to BHEL account and outside India will be to supplier's account.
15. Suppliers shall quote competitive price and best delivery for all the items mentioned in the enquiry. BHEL reserves the right to reject partial quotations and to place order on overall landed cost basis. Correct date of effecting supplies in the event of an order should be indicated in the offer. If the supplier's quoted terms are different from BHEL standard payment terms (Refer #14 above), interest @11% per annum (or as indicated in the enquiry) will be loaded to the quoted prices for difference of payment period.
16. **Packing:** The supplier shall be responsible for the goods being properly and adequately packed so as to prevent any loss, damage or deterioration during transit and indicate packing charges, if any, separately.
17. **Part/ Split Ordering:** BHEL reserves right to Order part of the item/ quantity of the enquiry and split the order among qualified vendors.
18. In case the goods enquired are on Rate Contract basis with any other unit of BHEL, such fact should be clearly indicated in the quotation giving full particulars of Rate Contract number, validity and price and also your willingness to comply with order if placed against such Rate Contract. A true copy of Rate contract signed by the supplier should be sent with the quotation.
19. **Inspection:** On receipt, the goods shall be subjected to inspection and also test, if necessary, and our decision regarding the acceptability of the goods shall be final and binding on the suppliers.
20. **Penalty for late delivery:** The time stipulated for delivery of goods shall be deemed to be the essence of the contract and delivery must be completed within the stipulated date/s. In the event of supplier's failure to supply the goods by the stipulated date/s, a penalty of ½% per week for the delayed no of weeks or part thereof for the undelivered portion of PO subject to a maximum of 10% of total order value shall be levied at the discretion of BHEL.
21. **Withdrawal from the Contract:** In case the supplier withdraws the quotation after its acceptance by BHEL or fails to supply the goods as per the terms and conditions of contract, or at any time repudiated the contract wholly or in part, BHEL shall be at liberty to cancel the Purchase Order and to recover from the supplier the extra cost and other loss, incidentals due to the breach of contract on the part of the supplier through risk purchase.
22. **Guarantee/ Warranty certificate and Manufacturer's Test report:** Invariably in all cases where it is so stipulated, the supplier should furnish Guarantee/ Warranty certificate valid for a period of 18 months from date of supply or 1 year from the date of receipt, acceptance and commissioning(or more, if provide by oem) whichever earlier and manufacturer's Test report along with the goods, failing which, BHEL shall have the right to reject the goods.
23. All ferrous/ non-ferrous items shall be colour coded as per bureau of Indian standards/ or IS standards/ BHEL Standards.
24. **Recovery of Dues:** BHEL shall recover any amount due from the supplier or any amount outstanding to the credit of the supplier with BHEL R&D unit or any other BHEL unit(s) and/or by legal action.
25. **Arbitration & Forum for Legal Proceedings:** All disputes arising in connection with indigenously/ foreign supplies shall be settled through arbitration held at Hyderabad, AP, India and arbitration shall be appointed by Arbitration Tribunal of the Federation of Andhra Pradesh Chambers of Commerce and Industry, Hyderabad, AP, India. The Courts at Secunderabad/ Hyderabad, AP, India shall have jurisdiction in respect of any suit or other legal proceeding arising from or relating to this contract

The rights and remedies of BHEL stated in these General terms and conditions shall be in addition and supplemental to its rights and remedies under law and custom or usage of trade or business and shall in no way be deemed to limit, curtail, supercede or derogate from its said rights and remedies.



RD:MPX:F-18

BHARAT HEAVY ELECTRICALS LIMITED
CORPORATE R&D Division
Vikasnagar, Hyderabad, Andhra Pradesh, India – 500093.,

IMPORTED

Suppliers' compliance statement to basic conditions of enquiry (to be submitted along with Technical & Commercial bid)
Enquiry number: **Enquiry dt:**

(In case Order to be placed on the Principal and foreign currency)

Condition	BHEL R & D's terms	Supplier's compliance (indicate Yes/No. if 'No', state terms desired)
1. Validity of offer	90 days from the tender opening date (or as per enquiry)	
2. Delivery requirements	FCA – Nearest International Airport (or as indicated in the enquiry)	
3. Warranty	Unless specifically mentioned in the enquiry, all supplied items to be provided with warrantee for one year (or more, if provided by the OEM) from the date of acceptance/ commissioning. In case of equipment involving erection and commissioning, warrantee shall be for 18 months from the date of dispatch or 12 months from the date of commissioning, whichever is earlier	
4. Terms of payment	Sight draft. All bank charges inside India will be to BHEL R&D account and outside India will be to the supplier's account. Documents through State Bank of India, Trade Finance Central processing Cell (TFCPC), Opp. Anand Theatre, Secunderabad, Andhra Pradesh, India-500003. SWIFT Code: SBININBB602, Phone: 91-40-27816795, FAX: 91-40-27720459	
5. Agency commission	Pl specify Indian agency commission charges, if any, in percentage of quotation. The same shall be paid to the agency in Indian Currency only.	
6. Erection/ Commission	As per enquiry	
7. Documentation	As per enquiry	
8. Insurance	BHEL will arrange Insurance based on intimation to our Insurance agency. Address of the agency will be mentioned in the Purchase Order.	
9. Penalty for late delivery	0.5% per week beyond the delivery date on undelivered portion subject to a maximum of 10% of the total order value.	

* BHEL R&D reserves the right to reject any offer due to non-compliance with the above conditions and/or non-receipt of this form in duly filled condition

* Any other elements of cost in addition to the above may please be specified in detail

(Signature and Stamp/ Seal of Vendor)



RD:MPX:F-17

BHARAT HEAVY ELECTRICALS LIMITED
CORPORATE R&D Division
Vikasnagar, Hyderabad – 500093, India.

Suppliers' compliance statement to basic conditions of enquiry (to be submitted along with Technical & Commercial bid)
Enquiry number:: **Enquiry date::**

(In case Order to be placed on Indian supplier in Indian currency)

Condition	BHEL R& D's terms	Supplier's compliance (indicate Yes/No. if 'No', state terms desired)
1) Validity of offer	Unless specifically mentioned in the enquiry, 90 days from the tender opening date	
2) Delivery requirements	Free delivery at our stores or FOR destination (or as indicated in the enquiry)	
3) Warranty	Unless specifically mentioned in the enquiry, all supplied items to be provided with warrantee for one year (or more, if provided by the OEM) from the date of acceptance/commissioning. In case of equipment involving erection and commissioning, warrantee shall be for 18 months from the date of despatch or 12 months from the date of commissioning, whichever is earlier	
4) Terms of payment	Unless specifically mentioned, full payment will be made within thirty days after receipt, inspection and acceptance of the material at BHEL R&D (and where involved, erection and commissioning of the material/equipment at BHEL/destination), by EFT/RTGS with bank charges, if any, to supplier's account.	
5) Taxes & Duties	Unless specifically mentioned in the enquiry, we do not provide 'C' or 'D' form. Supplier to specify rates of taxes and duties element wise and related percentages. Terms like "inclusive" or "extra" are not acceptable. Please mention "NIL" if taxes/ duties are exempted/ not applicable.	
6) Penalty for late delivery	0.5% per week beyond the delivery date on undelivered portion subject to a maximum of 10% of the total order value	

* BHEL R&D reserves the right to reject any offer due to non-compliance with the above conditions and/or non-receipt of this form in duly filled condition

* Any other elements of cost in addition to the above may please be specified in detail

(Signature and Stamp/Seal of Vendor)



RD:DP:MPX:F-14

BHARAT HEAVY ELECTRICALS LTD.
Corp. R&D DIVISION
VIKAS NAGAR,
HYDERABAD- 500 093 (INDIA)

SUPPLIER REGISTRATION FORM

(FOREIGN SUPPLIER)

ALL COLUMNS SHOULD BE PROPERLY FILLED IN THE SPACE PROVIDED FOR.
WHEREVER IT IS NOT APPLICABLE PLEASE WRITE "NOT APPLICABLE".
INCOMPLETE OR INCORRECT FORMS MAY NOT BE CONSIDERED.

1.0 GENERAL INFORMATION:

1.1NAME OF COMPANY

1.2DETAILS OF HEAD OFFICE:

ADDRESS :
TELEPHONE :
FAX :
.EMAIL :
.WEB SITE :

1.3DETAILS OF FACTORY/WORKS:

ADDRESS :
TELEPHONE :
FAX :
.EMAIL :
.WEB SITE :

1.4DETAILS OF MARKETING AGENT

ADDRESS :
TELEPHONE :
.FAX :
.EMAIL :
.WEB SITE :

1.5 CHIEF EXECUTIVE

1.6 CONTACT PERSON(S)
FOR PRODUCT OFFERED
NAME(S)
OFFICIAL CPACITY
ADDRESS:
TELEPHONE
FAX
E-MAIL

1.7 YEAR OF ESTABLISHMENT

1.8 PRODUCTION CAPACITY PER ANNUM

1.9 PARTICULARS OF PRODUCT INCLUDING
SPECIFICATION AND RANGE OFFERED
FOR REGISTRTION
(ATTACH BROUCHERS AND CATALOGUE)

1.10 NAME(S) OF BANKERS

1.11 BANKER'S CERTIFICATE

1.12 PORT OF LOADING

1.13 NEAREST AIRPORT

1.14 NAME OF THE INDIAN AGENT, IF ANY
WITH AUTHORISATION LETTER

2.0 FINANCIAL INFORMATION

2.1 ...TOTAL CAPACITY

2.2 ...ANNUAL TURN OVER FOR LAST 3 YEARS

2.3 ...WHEHER CREDIT LICENSE ACCEPTABLE YES/NO

3.0 QUALITY MANAGEMENT SYSTEMS
ENCLOSED FORMAT PART-B

3.1 EXPERIENCE LIST FOR SAME/SIMILAR ITEMS
TO BE ENCLOSED

4.0FUTURE EXPANSION PLANS:
(GIVE DETAILS)

5.0 LIST OF ENCLOSURES:
INCLUDING BROUCHERS, CATALOGUES, TECHNICAL
LITERATURE ETC.

6.0 ANY OTHER INFORMATION

SIGNATURE OF SUPPLIER (AUTHORIZED SIGNATORY)

NAME

DESIGNATION

DATE

.....OFFICIAL SEAL

Note: Please attach separate sheets, if space found is inadequate



BHARAT HEAVY ELECTRICALS LTD.

Corp. R&D DIVISION

VIKAS NAGAR,

HYDERABAD- 500 093 (INDIA)

Ph: 040 – 23778474, Fax: 040 – 23770698, email: mpx@bhelrnd.co.in

RD:DP:MPX:F-13

VENDOR REGISTRATION FORM

(Indigenous supplier)

[FORM TO BE SUBMITTED* BY THE BIDDER ALONG WITH TECHNICAL-BID]

Before filling, please refer to instructions on page-4

1.0 VENDOR PROFILE:

1.1 Name and address of the vendor:

Phone Nos.:

Fax No.:

Email: 1.

2.

1.2 Local representative name & address in Hyderabad/ Secunderabad:

Phone Nos.:

Fax No.:

Email:

Contact person:

Mobile No.:

2.0. TYPE OF ORGANIZATION:

PROPRIETORSHIP	COMPANY	SISTER CONCERN (mention vendor registration number of main organization)	
PARTNERSHIP	CORPORATION	Small Scale Industry	ANY OTHER (Please specify)

In case of SSI unit, copy of registration to be enclosed.

3.0 ANNUAL TURN OVER:

#	Year	Turn-Over
1	Current Year(budgeted)	
2	Previous year (200 - 0)	
3	Prior Year (200 - 0)	

4.0 NAME AND ADDRESS OF THE BANKER:

1. Bank Name
2. Branch name
3. Account number
4. Account Type
5. MICR Code:
6. IFSC Code(RTGS/NEFT):
7. Bank Phone number(s),

Blank cheque, duly cancelled, to be enclosed.

Please note that all payments shall be made through Electronic clearance services to your above account against the orders executed, if any.

5.0 REGISTRATION PARTICULARS (relevant copies to be enclosed)

- 5.1 IT Permanent Account No.(PAN):
- 5.2 State sales tax/VAT Registration No.:
- 5.3 Central Sales Tax Registration No.
- 5.4 ED Registration No.
- 5.5 Service Tax Registration No.:
- 5.6 PF Account No.:
- 5.7 Labour Licence No.:
- 5.8 ESI Account No.:

6.0 CONTACT PERSON: S/Sri

Designation:::

Phone/ Mobile No. :

7.0 TOTAL NUMBER OF EMPLOYEES:

Graduates (Engr./Scientists/ Mgmt/Fin.)	Consultants	Workers		
		Sup./Skilled	Semiskilled	Unskilled

8.0 WISH TO REGISTER FOR SUPPLIES/SERVICES:

#	Service/Supplies	Capacity
1		
2		
3		
4		
5		
6		
7		

9.0 REFERENCE LIST :

(Only recognized public and private sector companies, attach if printed copy available)

#	Customer	Volume / Year
1		
2		
3		
4		
5		
6		
7		

10.0 INFRASTRUCTURE / FACILITIES:

#	Facility (with specifications)	Age/ Year procured
1		
2		
3		
4		
5		
6		
7		
8		
9		
10		

11.0 REGISTRATION WITH OTHER BHEL UNIT/UNITS:

#	Unit	Registration No.	Year
1			
2			
3			
4			

12.0 ANY OTHER INFORMATION :

DECLARATION:

The information furnished above is true and authentic.

(CEO / PROPRIETOR)

SEAL:

DATE:

The competent authority reserves the right to accept or reject the registration. Registered vendors will be informed by mail / email, as convenient. Contact AGM (MM) for clarification/ additional information on registration.

A separate communication will be sent to you in case of non-registration, citing reasons thereof.

Instructions

1. Answer all items; use NA for items not applicable.
2. BHEL units do not require this registration.
3. Use additional sheets for want of space if required.
4. Attach copies of latest documents in respect of items 5.0 (Registration no.s)
5. Photographs of registered office and the chief executive/proprietor shall be furnished.
6. Use A4 sheets for this document and the enclosures.

* REGISTERED BIDDERS, HAVING BHEL (R&D) REGISTRATION NO. OR HAVE SUBMITTED THIS FORMAT FOR REGISTRATION, NEED NOT FURNISH THIS INFORMATION AGAIN