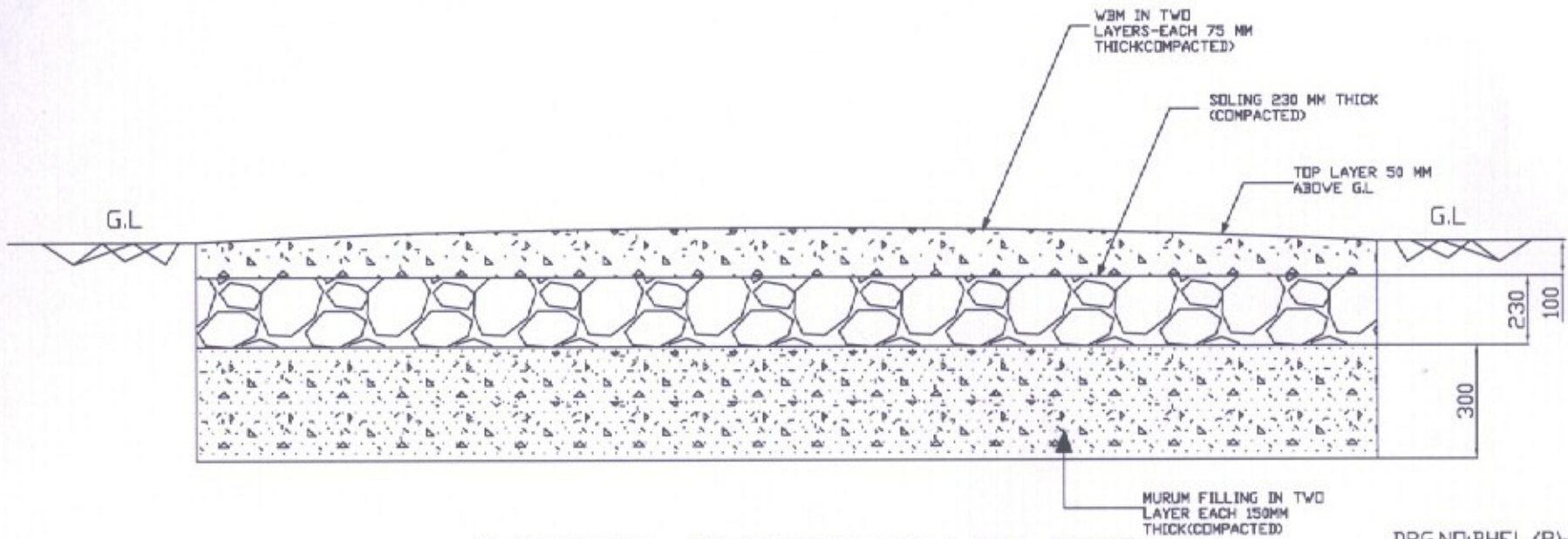


DRG.NO:BHE/PW/OY/01

- Y1: STORE YARD
- SOAK PIT 2M DIA.
- SEPTIC TANK 5M X 3M X 3.5M

DETAILS OF DRAINS AND ROADS IN OPEN STORAGE AREA (18000 SQ.M) FOR REFERENCE(INDICATIVE)



SECTIONAL DETAILS OF WBM ROAD

DRG.NO:BHEL/PW/DY/02

ALL DIMENSIONS ARE IN MM

40MM THICK CONCRETE COPING(1:2:4)

230MM

BRICKWORK

400MM

12MM THICK
PLASTER(1:6)

230MM

40MM

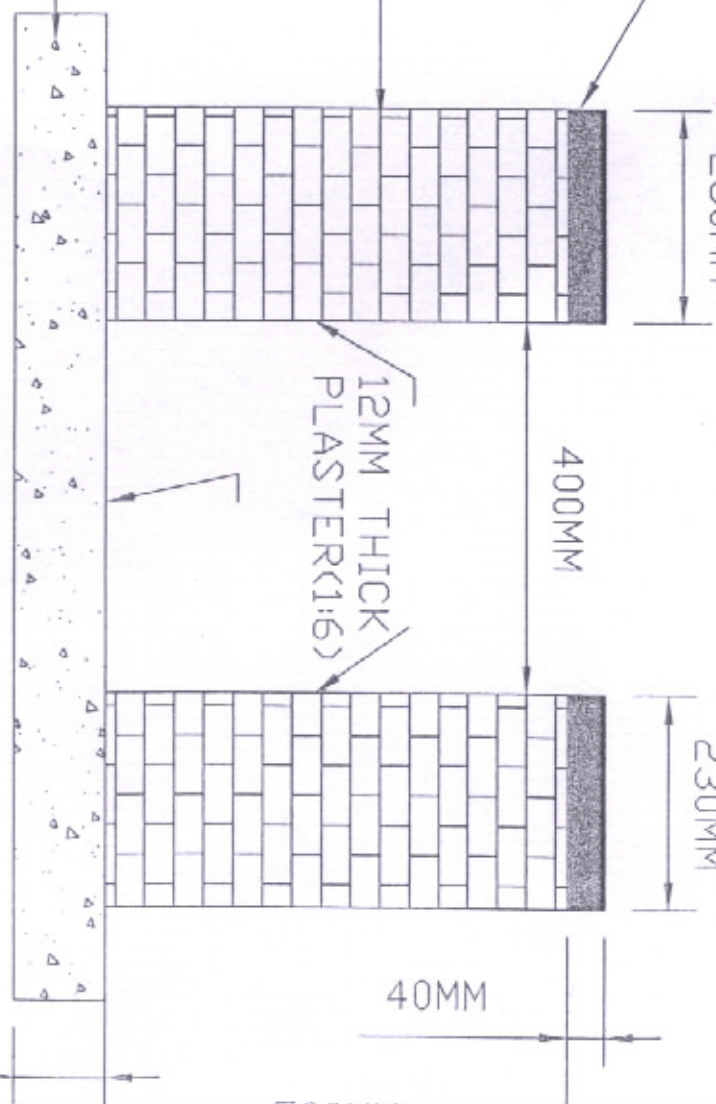
100MM THICK PCC(1:4:8)

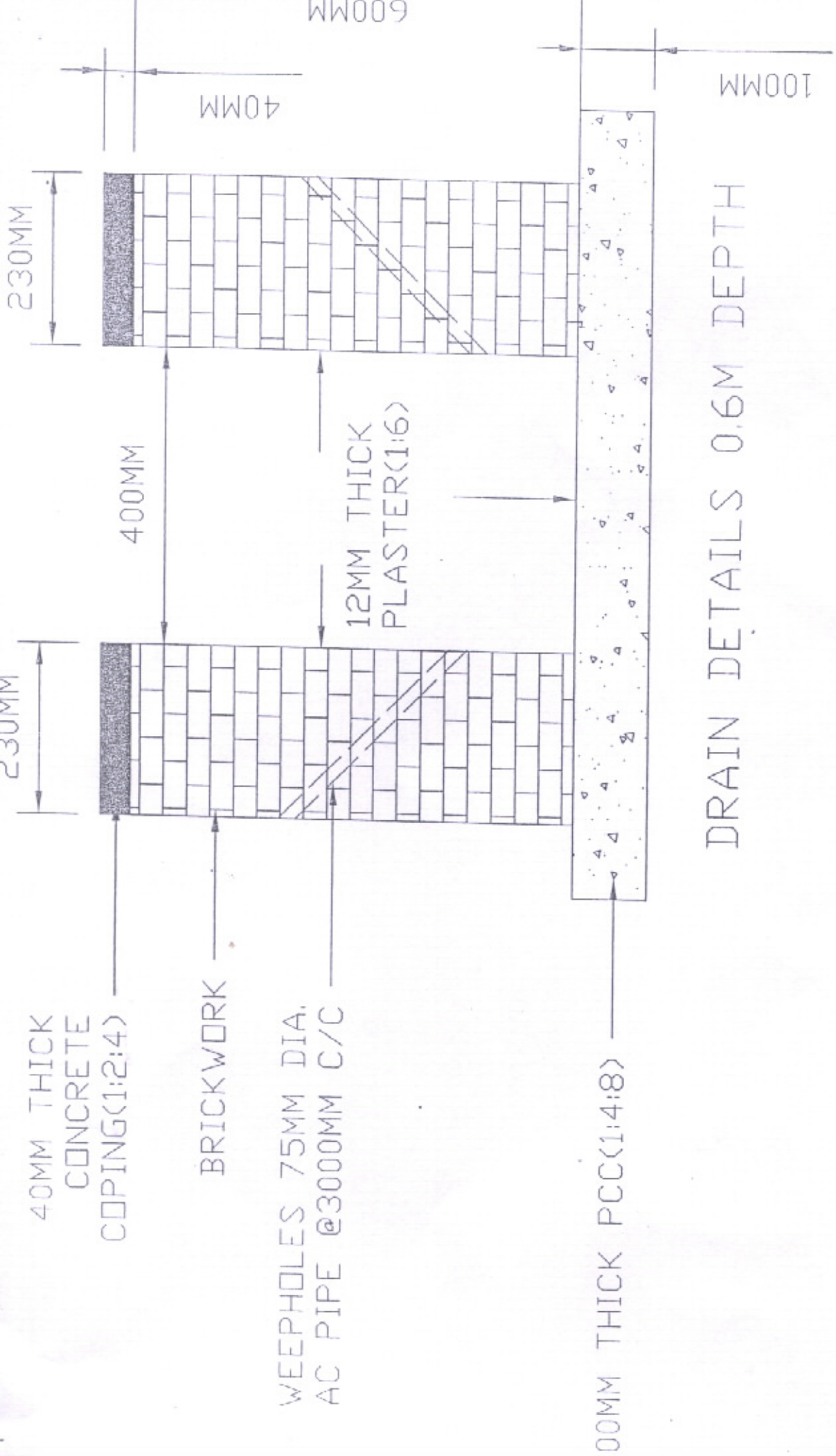
DRAIN DETAILS
DEPTH OF DRAIN 500MM

100MM

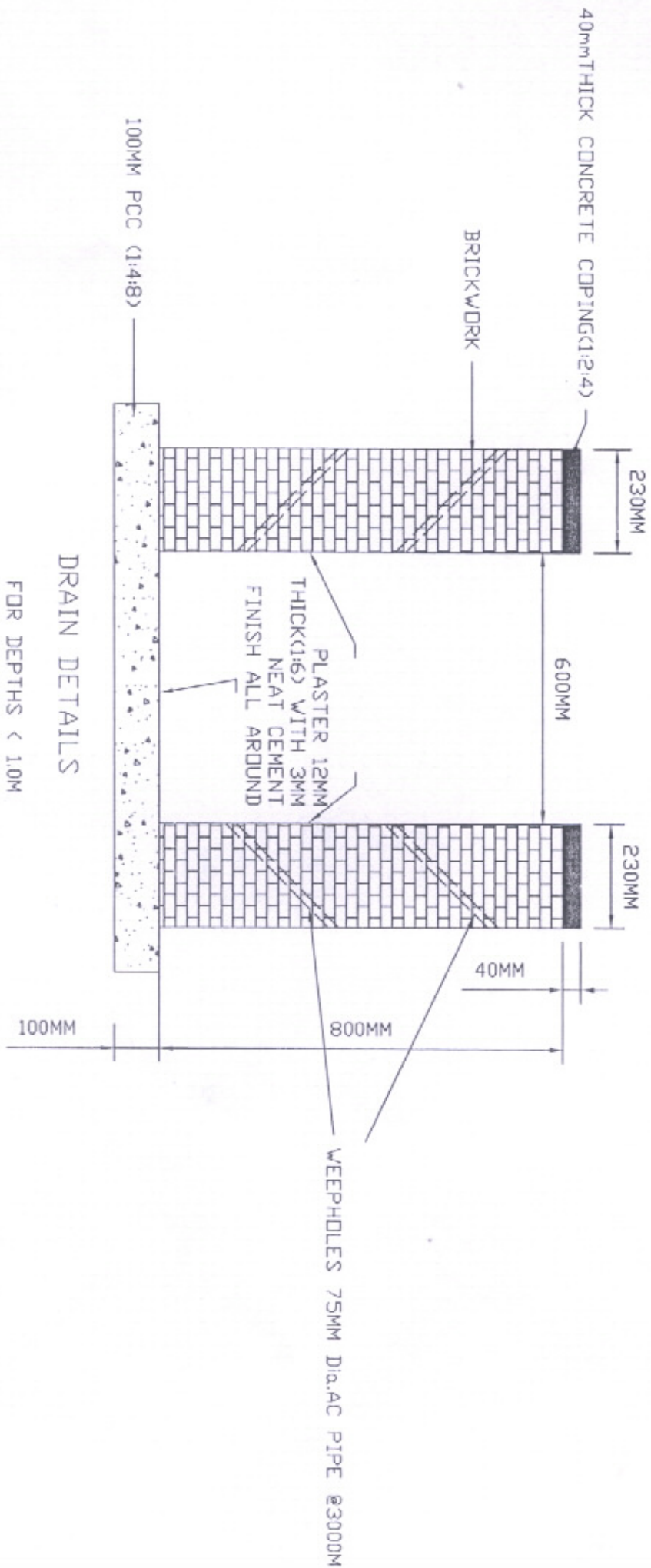
DRG. NO. BHE/PW/DY-03

500MM

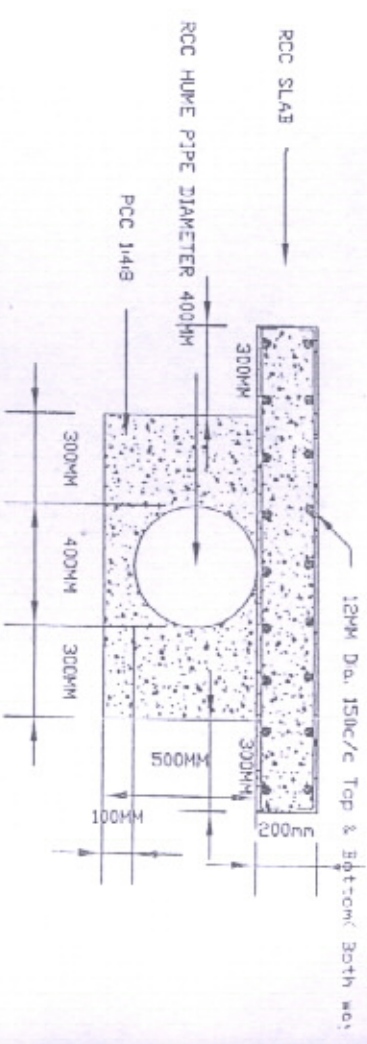
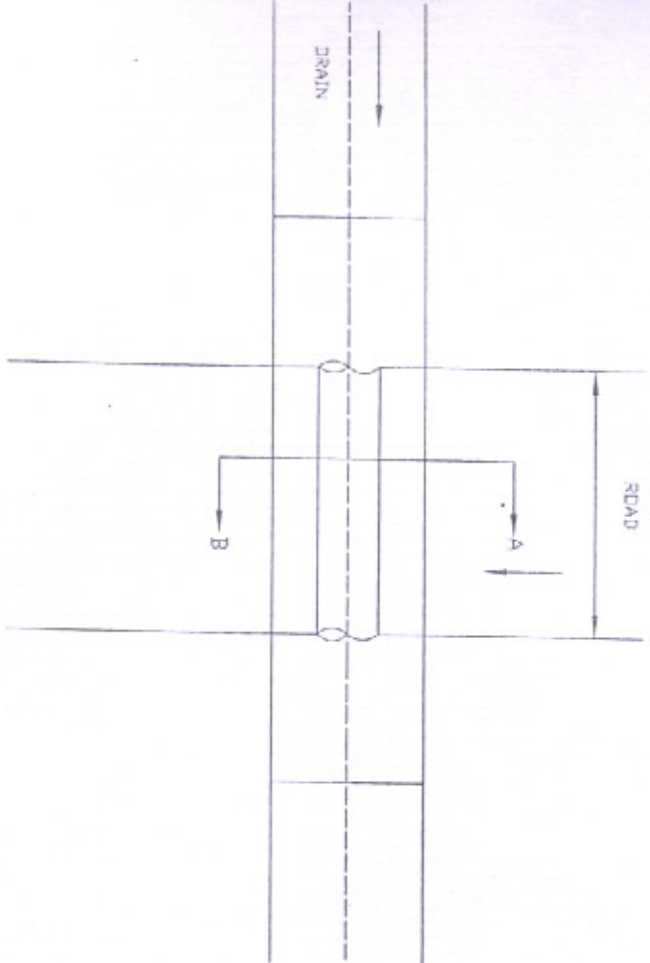




DRAIN DETAILS 0.6M DEPTH



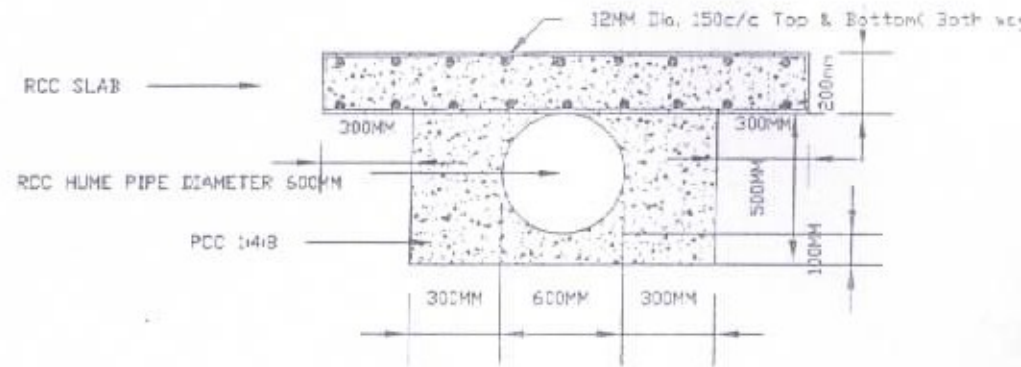
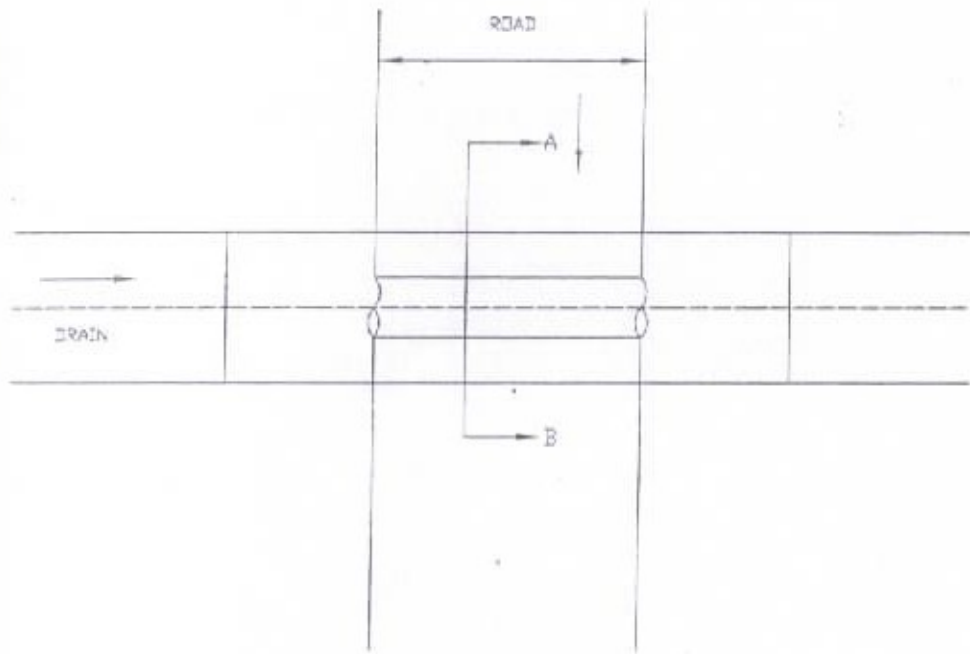
DRG No- BHE/PW/04-05



CULVERT DETAILS
DN SECTION A - B

CULVERT DETAILS FOR 400MM DIA. RCC HUME PIPE

DRG. NO. BHE/PW/DY - 06

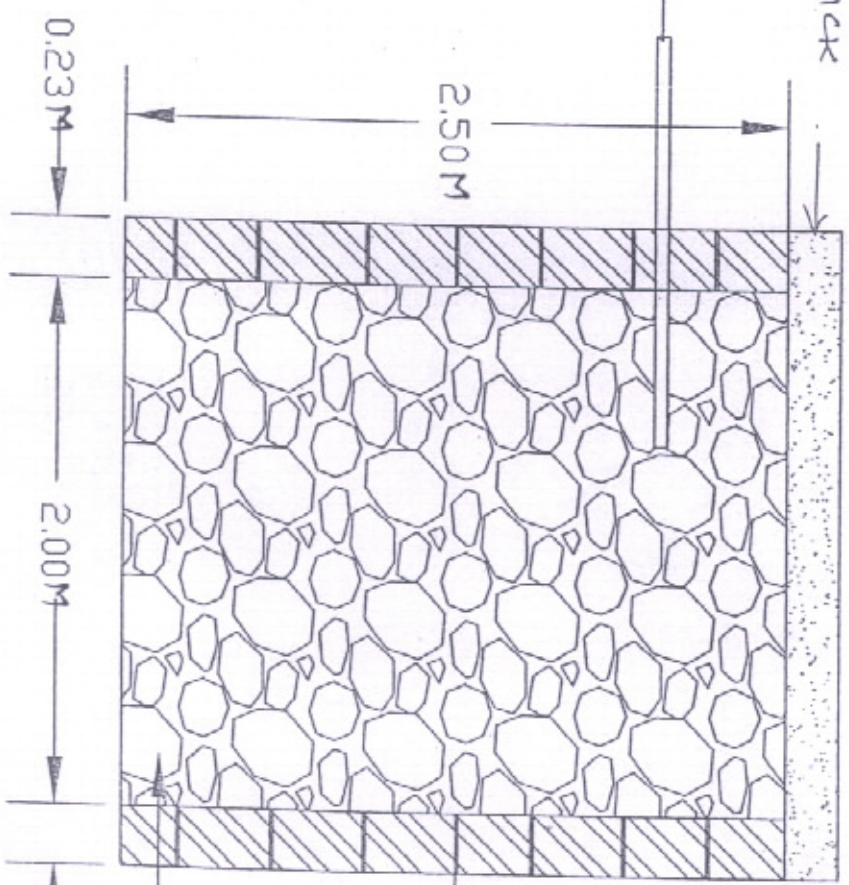


CULVERT DETAILS ON SECTION A - B

CULVERT DETAILS FOR 600MM DIA. RCC HUME PIPE

INLET 20CM BELOW OUTLET
PIPE OF SEPTIC TANK

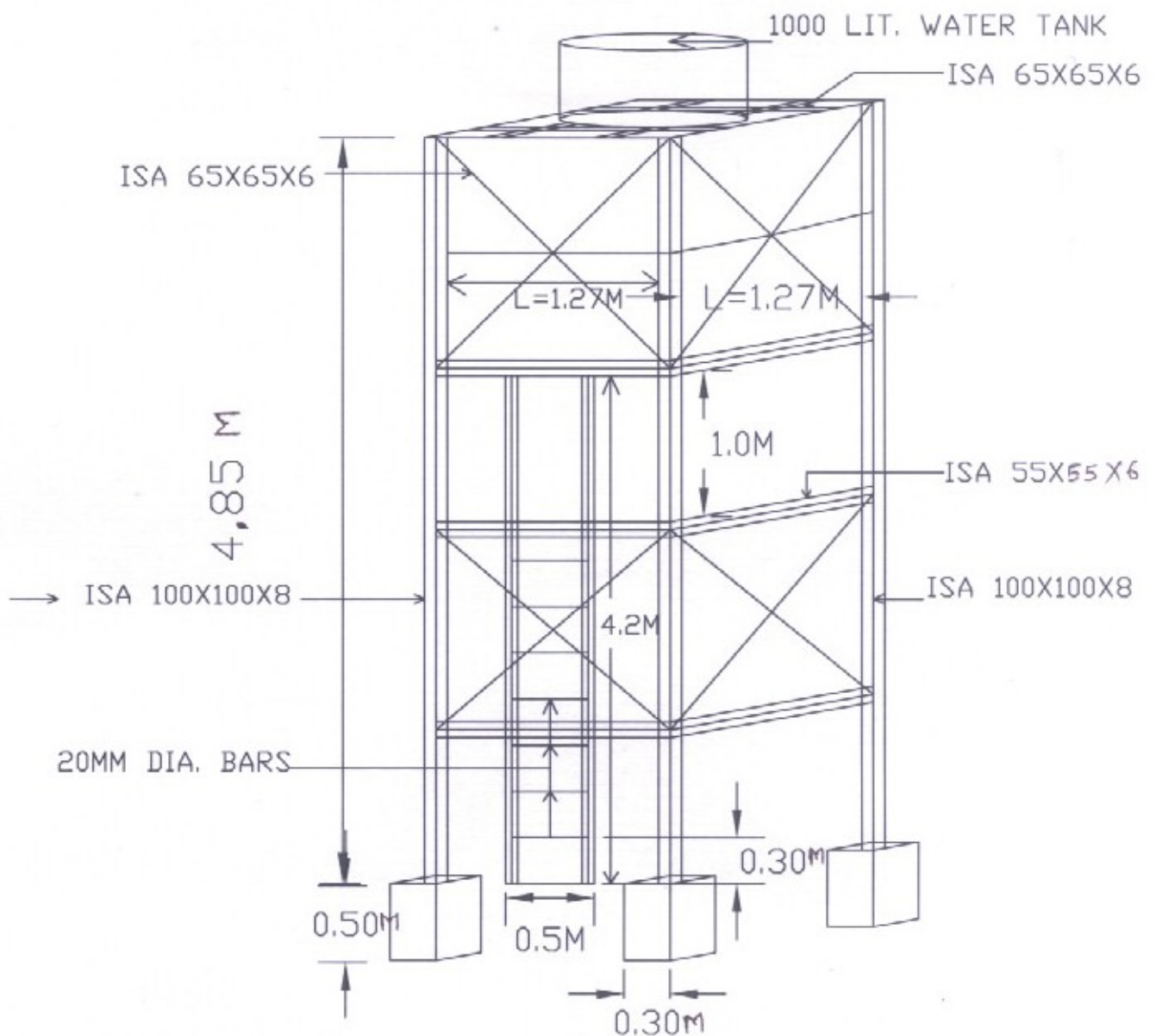
P.C.C COVER 100MM THICK



SOAK PIT

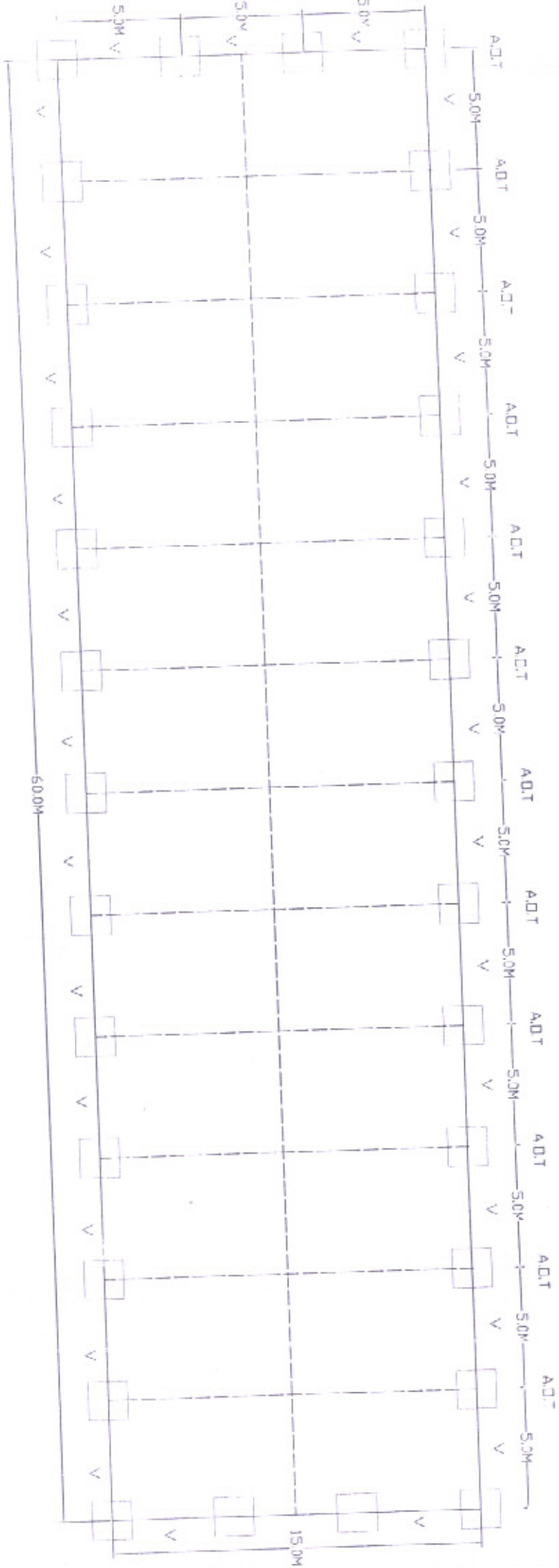
OPENINGS
IN
BRICKWORK
(PERFORATED
BRICKWORK)

BRICK
BATS



STAGING OF OVER HEAD WATER TANK

Dwg. No. - BHE/PW/STAGING



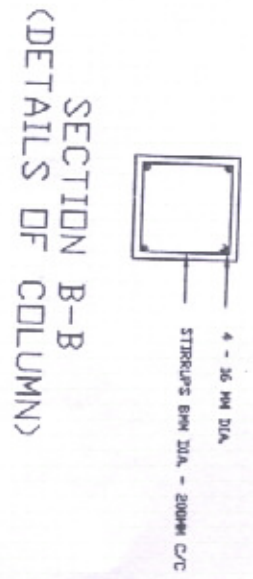
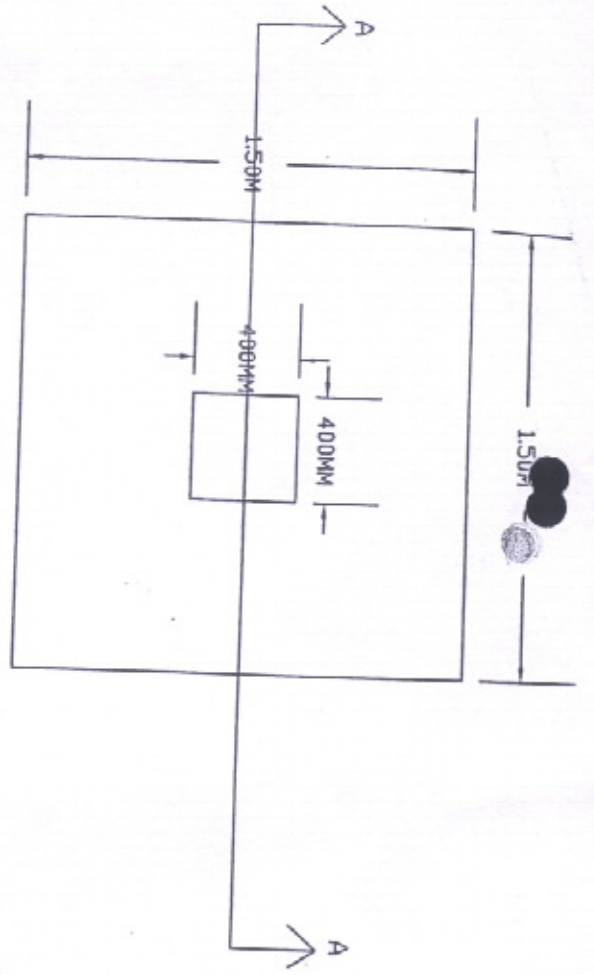
□ = COLUMN

V = STEEL LOUVERED VENTILATORS OF SIZE 600MM X 450MM AT EVERY SPAN OF 5M AT EYE LEVEL (300MM BELOW ROOF)

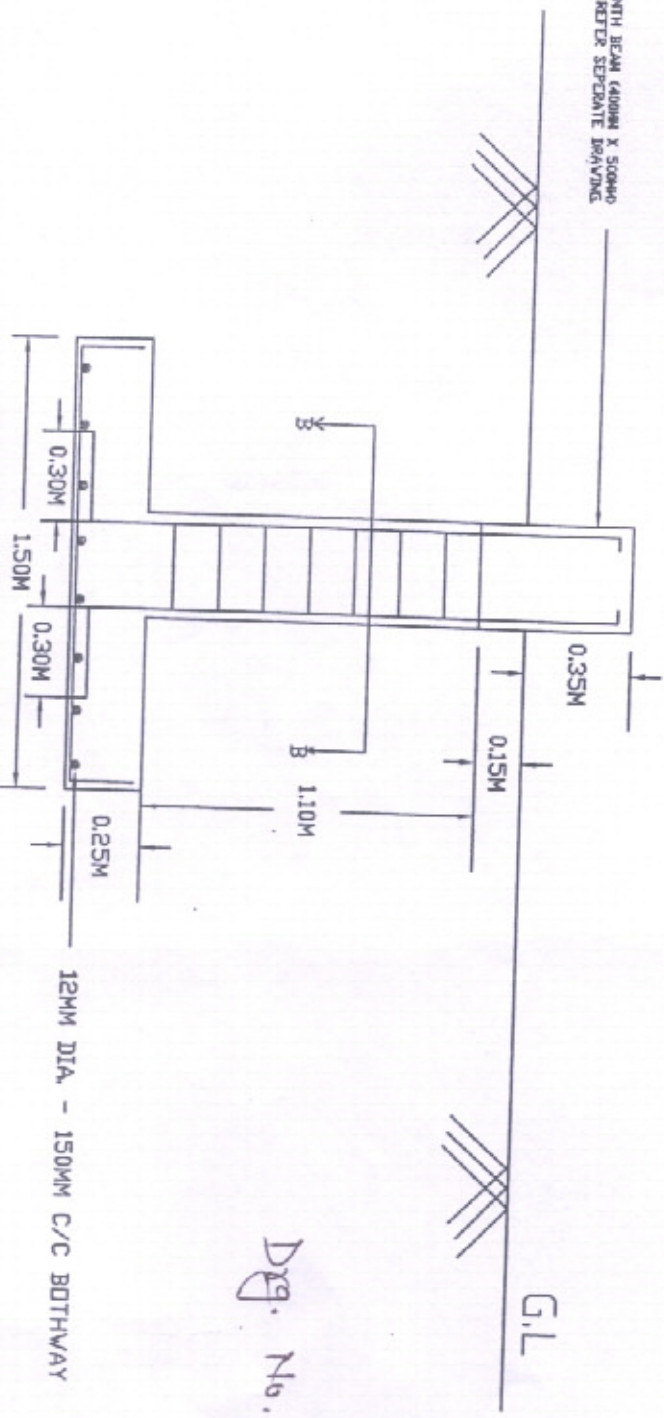
PLAN AT PLINTH LEVEL OF CLOSED SHED CUM OFFICE (60M X 15M)

Dwg. NO. BHE/PW/CS/01

PLAN OF FOOTINGS FOR CLOSED SHED

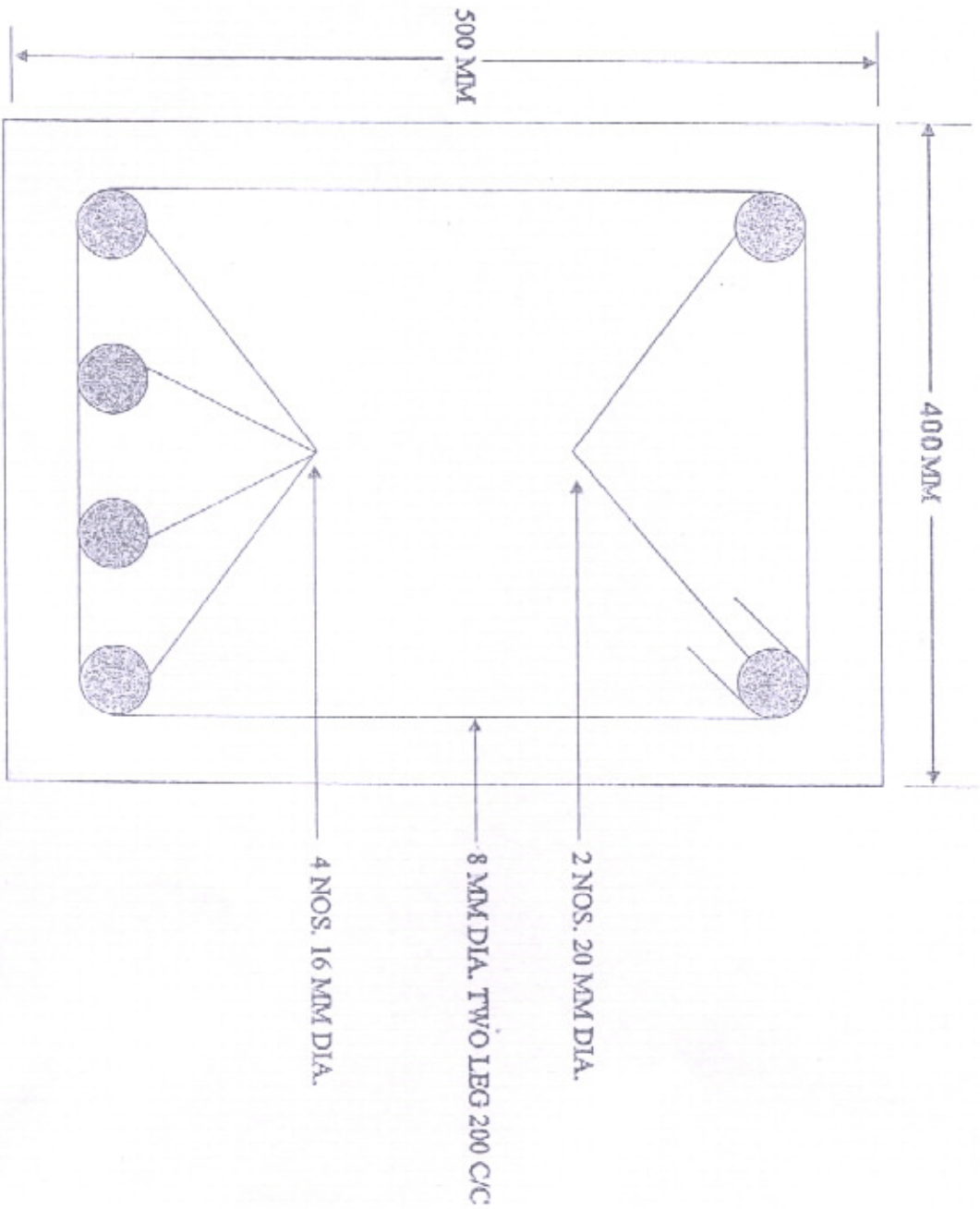


PLINTH BEAM 400MM X 500MM
FOR DETAILS REFER SEPARATE DRAWING



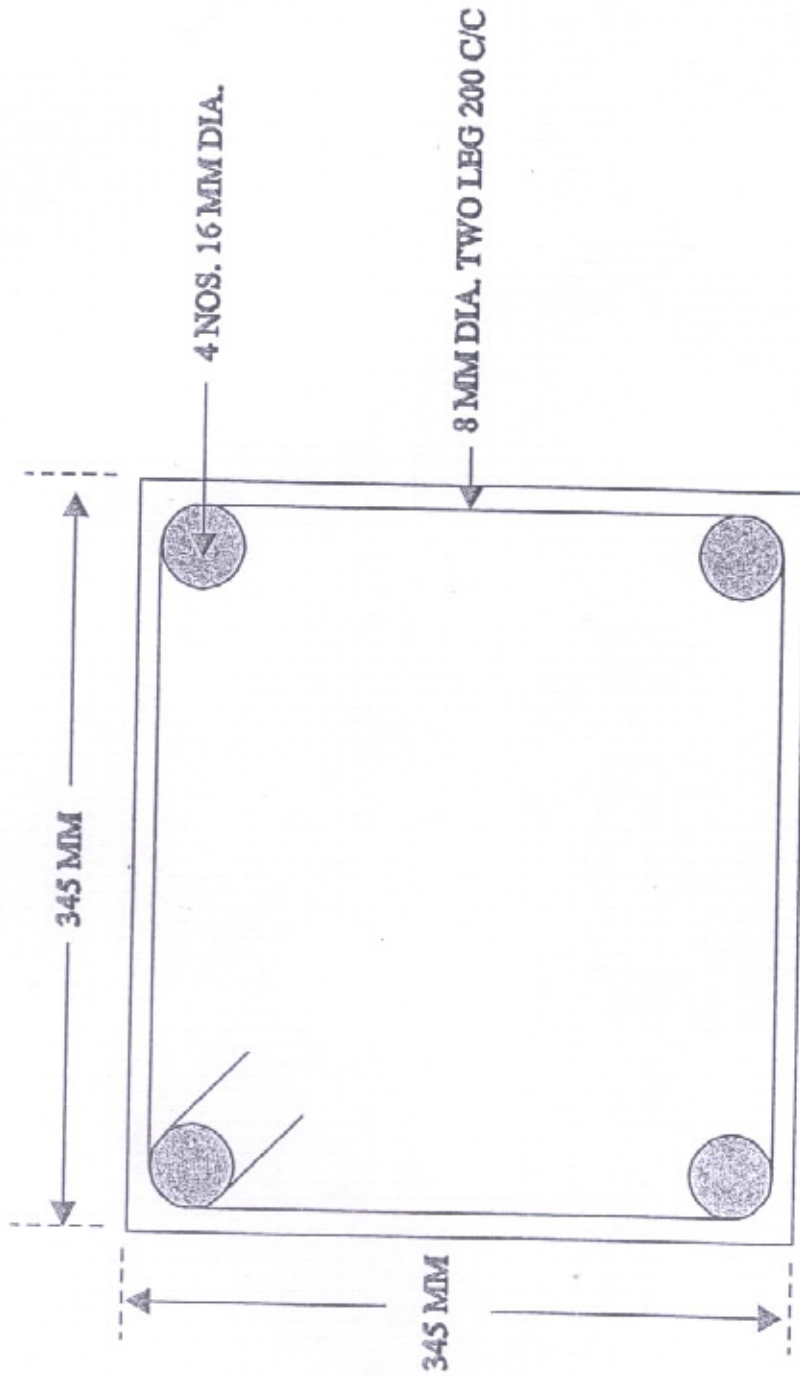
12MM DIA - 150MM C/C BOTHWAY

Dwg. No. BME/PW/CS-03



SECTION OF PLINTH BEAM
 SIZE : 400MM X 500 MM

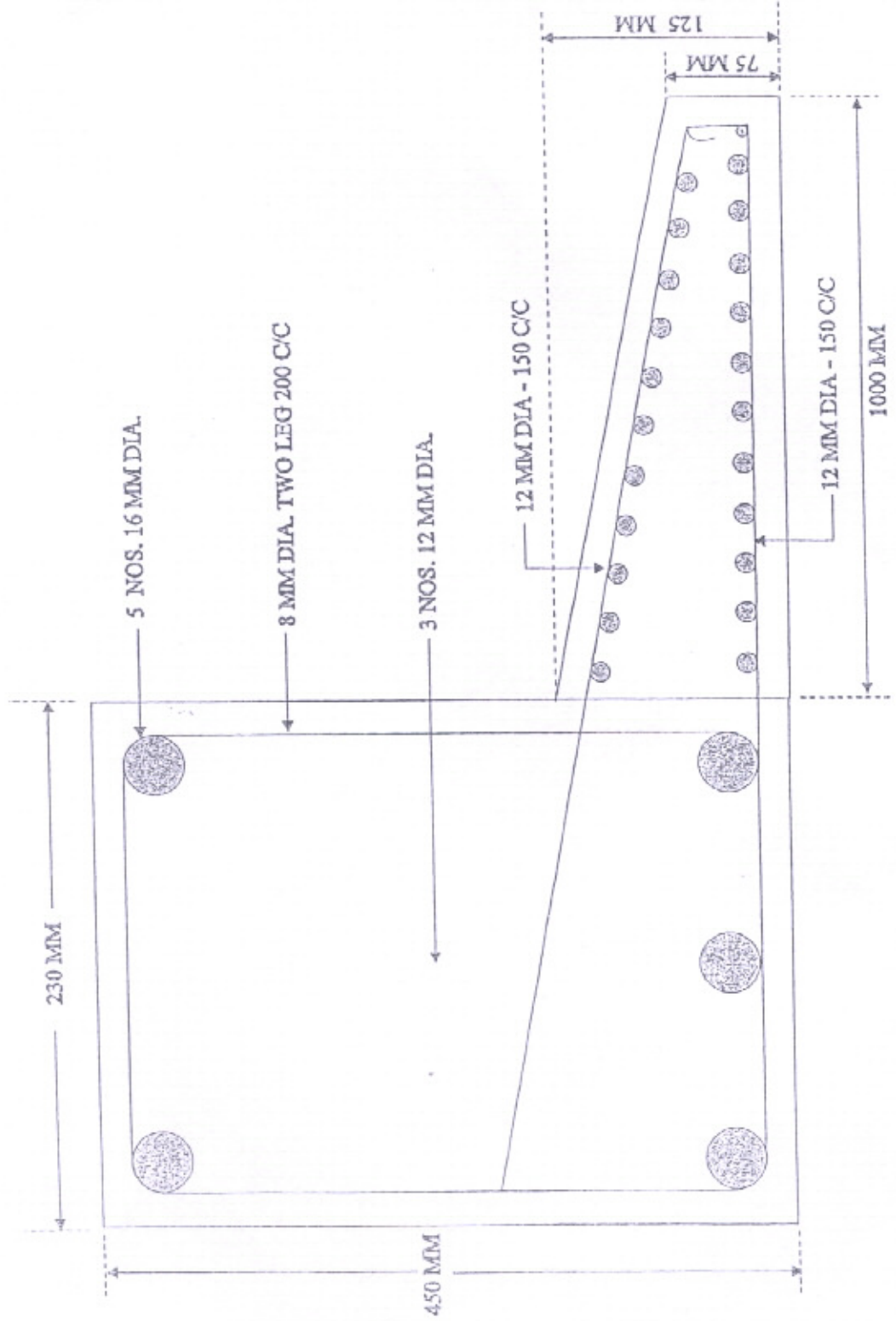
Drng No. BHE/PW/CS - 04



SECTION OF STUB COLUMN FOR CLOSED STORE YARD
 SIZE : 345 MM x 345 MM

—||— HEIGHT OF STUB COLUMN = 1.5 M

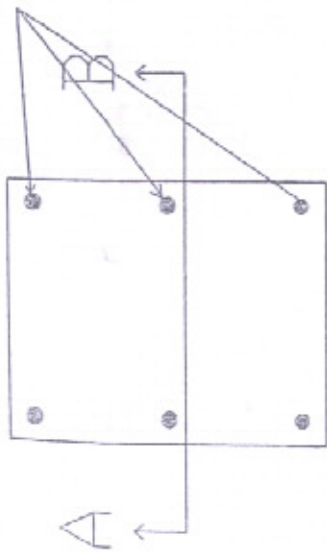
DRG. NO. BHE/PW/CS-06



SECTION OF LINTEL & PROJECTION FOR CLOSED STORE YARD (AT ROLLING SHUTTERS)

1
1-
12
(3)
4)
)

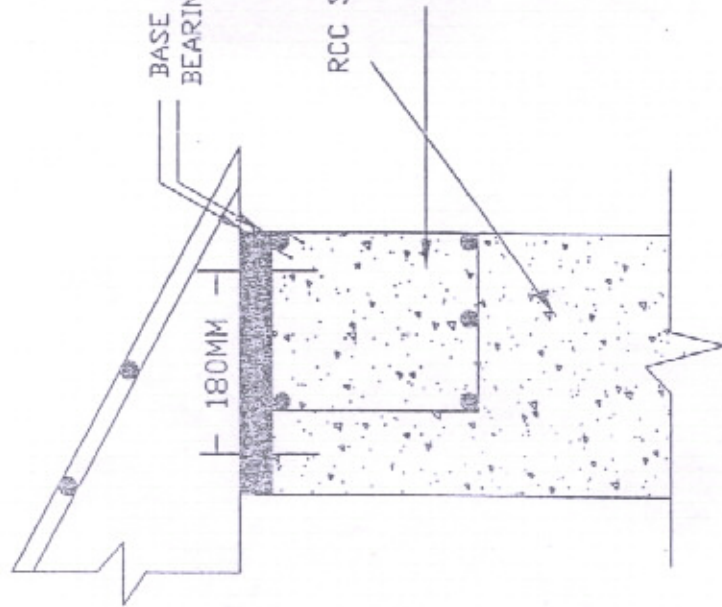
MS FOUNDATION BOLTS 16MM Dia. - 4 Nos. AT CORNERS
 AND 20MM Dia. - 2No. AT CENTRE
 LENGTH OF BOLT = 500MM



BASE PLATE 345MM X 345MM X 20MM THICK (WITH TRUSS)
 BEARING PLATE 345MM X 345MM X 15MM THICK

RCC STUB COLUMN 345MM X 345MM

TIE BEAM 230MM X 300MM (5 - 12MM DIA., STIRRUPS 8MM DIA. 200MM C/C)

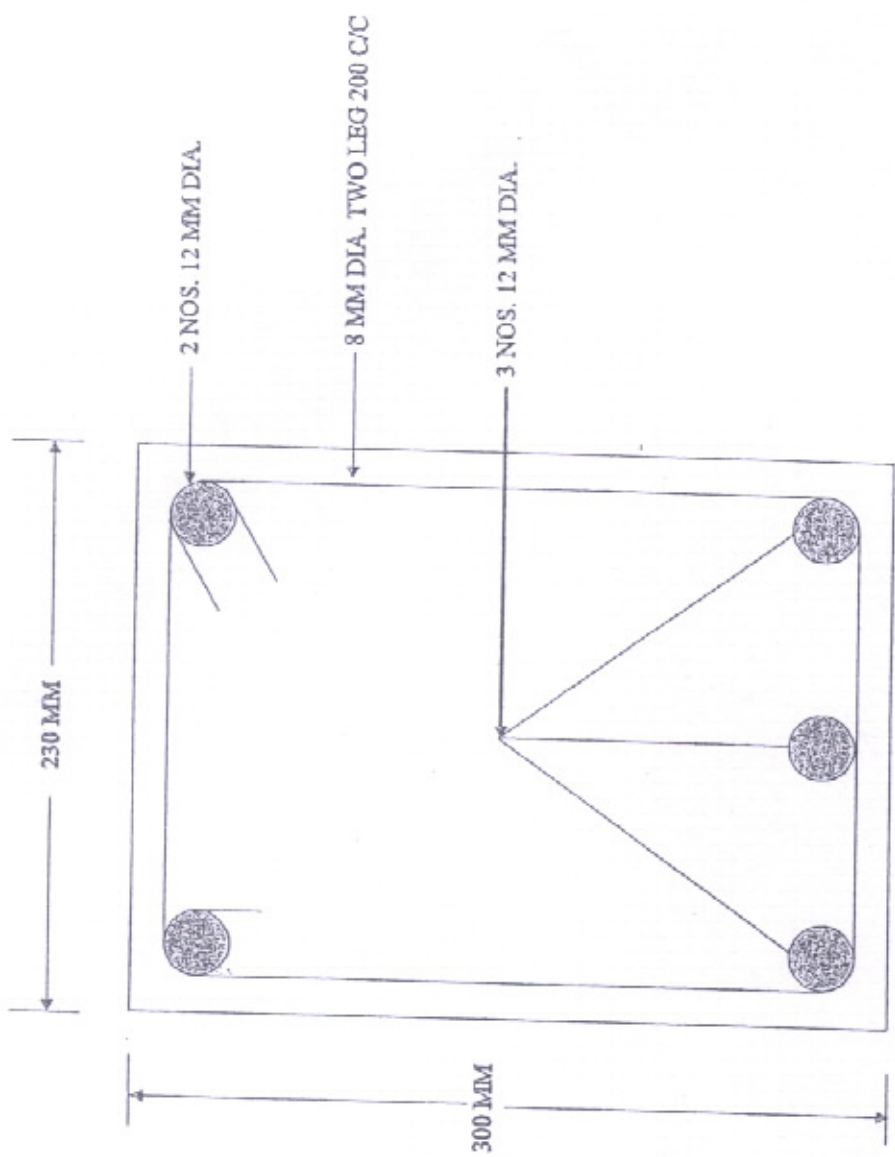


DRG NO. BHE/PW/CS-08

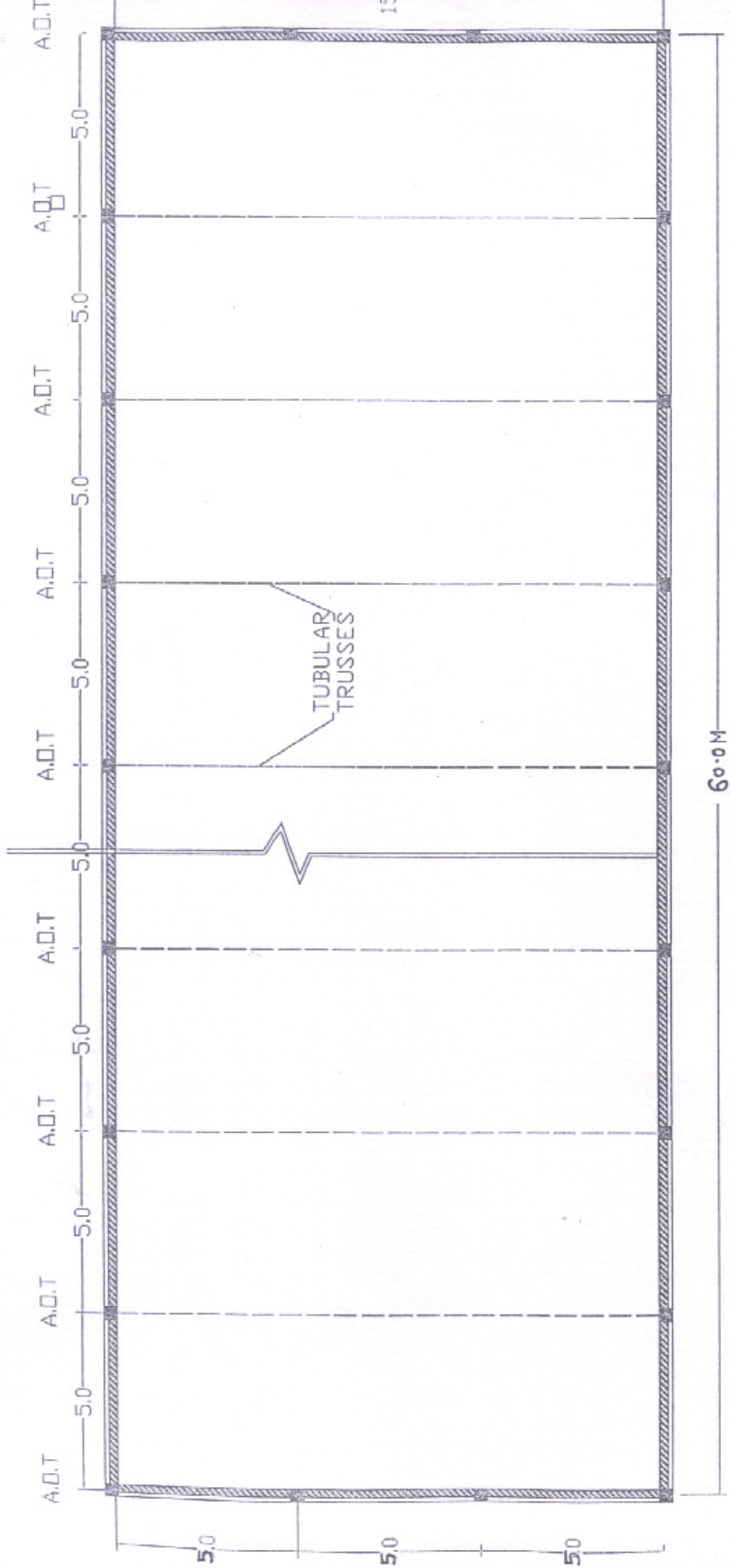
SEC A - B

DETAILS OF BASE PLATE AT TRUSS LEVEL OF CLOSED STORAGE SHED

DRG NO. BHE/PW/C.S - 09



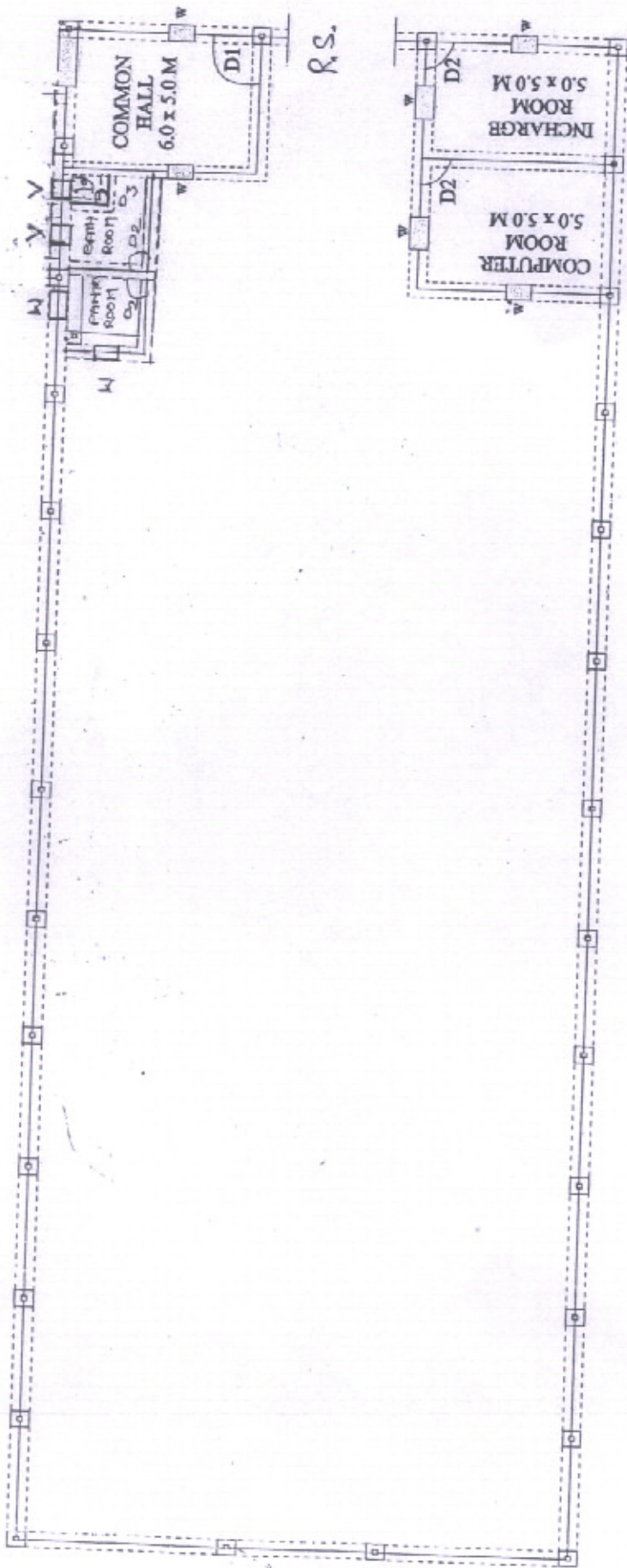
SECTION OF TIE BEAM



FOUNDATION PLAN FOR CLOSED ~~SEMI-CLOSED~~ SHED (60M X 15M)

□ = COLUMN 400MM X 400MM
 A.D.T = Axis of Trusses

DRG. NO. BHE/PW/CS - 10

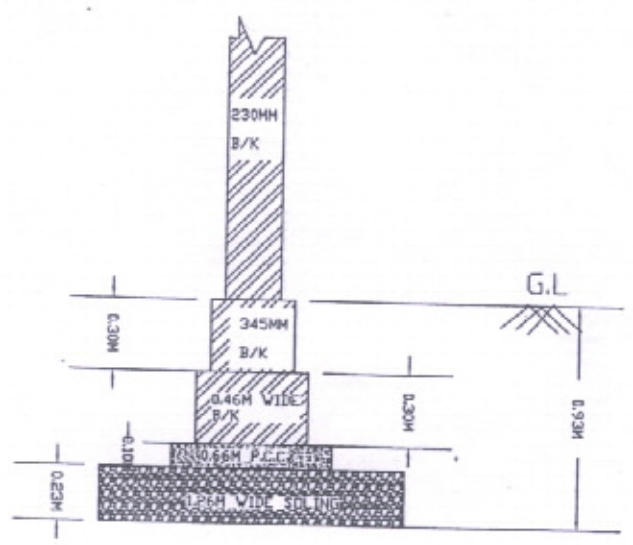


SCHEDULE OF DOOR WINDOW & VENT.

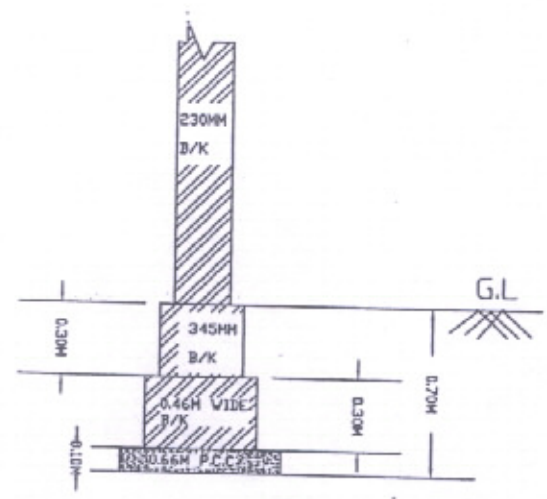
PLAN OF CLOSED STORAGE YARD WITH OFFICE
 SIZE : 60.0 M x 15.0 M

- 1) D1 = 1.2 M X 2.1 M
- 2) D2 = 1.8 M X 2.1 M
- 3) D3 = 0.75 M X 2.1 M
- 4) W = 1.8 M X 1.2 M
- 5) V = 0.6 M X 0.45 M

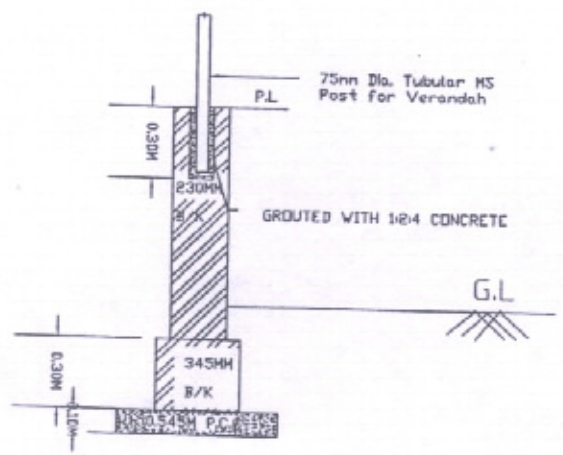
DRG. No. BHE/PW/ES-12



Internal wall Foundation details

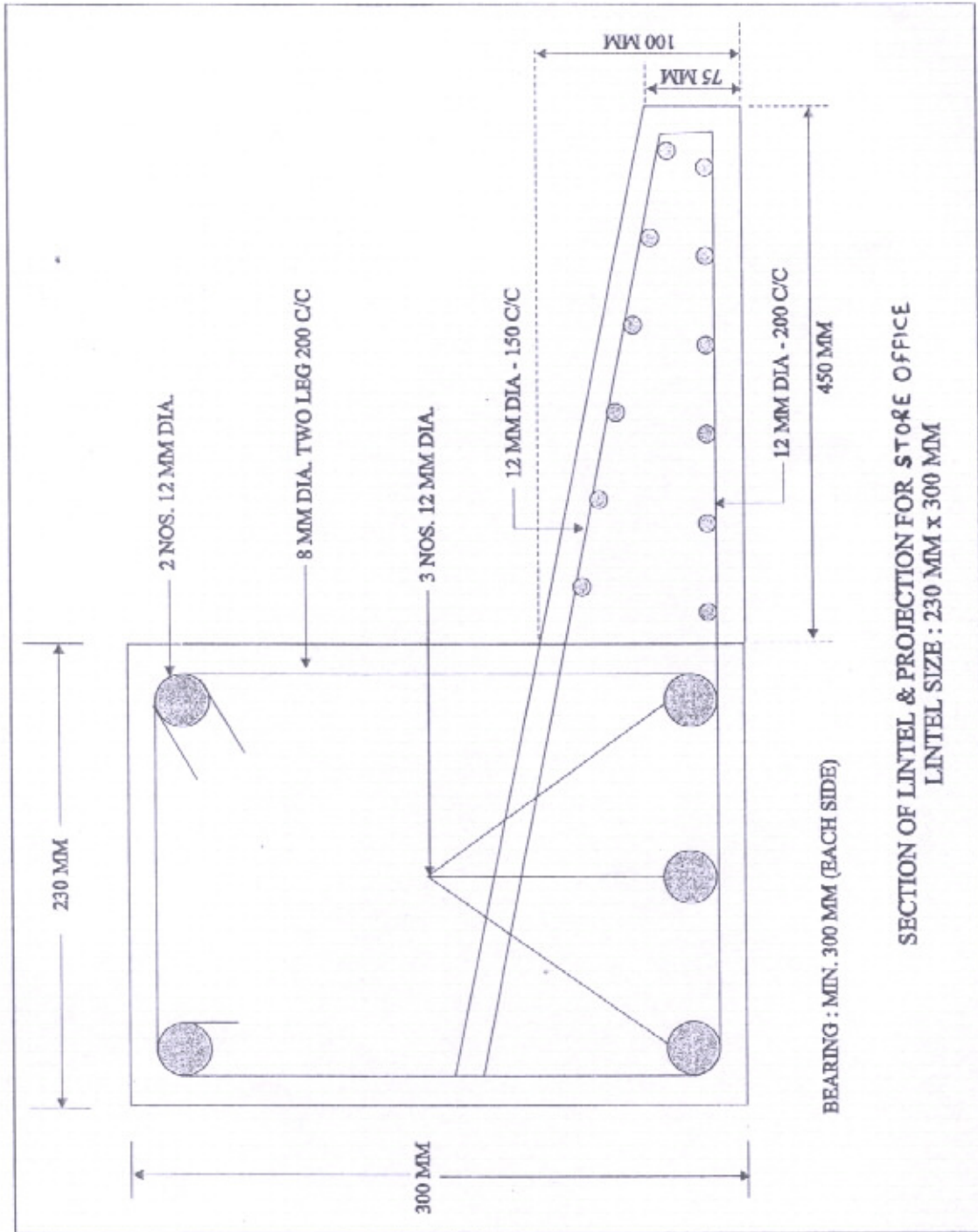


Partition wall Foundation details



Verandah wall Foundation details

DETAILS OF BRICK FOUNDATION



Drg No. BHE/PW/CS/13

Note: Continuous Lintel Beam with Projected Sunshade at Door and Window Location)