

S.NO.	TECHNICAL HEAD	REMARKS	
1	Tool shall have facility to perform following operation: - a) deep hole of dia 40 mm x812 b) deep hole of dia 40 mm x710 c) deep hole of dia 40 mm x510 d) deep hole of dia 32mm x793	VENDOR TO CONFIRM	
2	Work piece material : forged steel shaft chrome molybdenum steel, conforming to din en10083-1 grade 30 CR Ni Mo8 (material no. 1.6580) hardness value range is 270 to 320 HBS	VENDOR TO CONFIRM	
3	This Tool is to be used for deep drilling holes. Covering length 520 to 850 mm	VENDOR TO CONFIRM	
4	Tool shall be suitable for MT-5 shank for our ward lathe 26/A/2032.	VENDOR TO CONFIRM	
5	Tool suitability required for rotor shaft deep hole preparation as per attached drg no. a) 14304570001, b) 14304511026, c) 14304565003 & d) 1430457300116.	VENDOR TO CONFIRM	
6	Required qty : (2 body + 25 spade drill insert each type)	VENDOR TO CONFIRM	
7	Vendor is advised to make a visit to seek hands on experience of the requirement. This shall help in understanding assembly , compatibility and machining issue with our ward lathe machine 26/A/2032	VENDOR TO CONFIRM	
8	The spade drill body should be designed compatible to accommodate minimum 32 to 40 mm dia spade inserts.	VENDOR TO CONFIRM	
<b>Scope of supply</b>			
9	2 drill bodies compatible with spade drill inserts mentioned in sr. No. 1 (spade drills inserts 25 nos. each type)	VENDOR TO CONFIRM	
10	In first lot one body and five number spade drills inserts of each type shall be supplied. Balance qty. shall be supplied subsequently after prove out in second lot.	VENDOR TO CONFIRM	

**TABLE -2 PRE-QUALIFYING CONDITIONS (PQC)**

1	Only OEM or authorized agent/dealer/channel partner of the OEM should quote	YES/NO	Party to submit: A) Proof of establishment /declaration in case of OEM OR b)in case of authorized agent /dealer /channel partner of the OEM Valid authorization certificate from OEM is required.
2	Past Performance of similar item i.e. TOOL of any size (10 % supply made to central/ state utilities/ PSUs/Public listed/private companies in the last 5 years from tender opening date)	YES/NO	Party to SUBMIT a) Supply proof i.e. Unpriced PO copy and b) Invoice/Delivery challan/Store receipt of same PO.
3	Standard guarantee/warranty terms : 1 year from SRV Date	YES/NO	

Prepared by

Anil Kumar

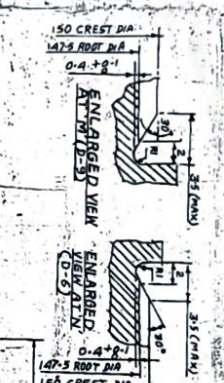
Checked by

R. Gupta

Approved by  
अजय धुवे / AJAY DHUWE  
वरिष्ठ अधिकारी / Sr. Managerटी.एस.ए.एल. विभाग / T.S.E.L. Division  
बी.एच.ई.एल. भोपाल / B.H.E.L., BHOPAL



### Drill Dimensions



5. CHAMFERING TO BE DONE ON INSIDE & OUTSIDE EDGES OF THE SLOT. SHARP CORNERS INSIDE HOLLOW SHAFT TO BE REMOVED.

NOTE - ✓ ALL OVER

RADI TO BE POLISHED WITH COMPLETE  
FREEDOM FROM TOOL MARKS.

IT	TOOL NO	DESCRIPTION
1	1442282	RING GAUGE M150*2

[illegible][illegible][illegible][illegible][illegible]

DATE	1-25	TIME	290.00	STATION	0-630-45-73-00	UNIT	100
USE YTD							
PAID CASH							
<b>ROTOR SHAFT (MISC)</b>							
(FOR OE - ASO)							
DRAWING NO.							
1-430-4573001							



**CONCORDIA UNIVERSITY**



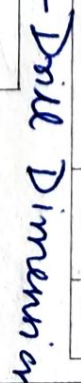
Drill Dimension

- | TOOL LIST |                           |
|-----------|---------------------------|
| IF.       | TOOL NO. DESCRIPTION      |
| 001       | 1442282 RING GAUGE M150x3 |

A1907



INVENTORY NO.	SIGN. & DATE	REF. DRG. NO.
---------------	--------------	---------------



TOOL LIST		
IT	TOOL NO	DESCRIPTION
1	1442282	RING GAUGE M150X2
1	1600519	LENGTH GAUGE 9.38+3
1	1600920	LENGTH GAUGE 19.30
1	1600572	LENGTH GAUGE FOR 210+8

[illegible]

0A7002AZ  
(OIL RIG ALTERNATOR)

SIZE A1




14304570001



**NOTES -**

1.  $\nabla$  ALL OVER & REPEAT SWAMP CORNERS.
2. SWAMP ONLY IF SURFING W/ICE ALLOWANCE IS NOT AVAILABLE.
3. TSHD ON 1432382 RELATES TO SWAMP DISPOSITION.
4. CHANGING TO BE DONE ON REPEAT & OUTSIDE EDDIES OF SWAMP CORNERS INSIDE HOLLOW SWAMP TO BE REPEATED.
5. SURFACE FINISH  $\nabla$  ALL OVER UNLESS SPECIFIED OTHERWISE.
6. DIMENSIONS/PARAMETERS LISTED AS (C) ARE CRITICAL. REFER PRODUCT 575 ADD-116.
7. SURFACE FINISH STEPS VARIED  $\nabla$  ARE SHOWN SURFACE.
8. ALL RIGID TO BE SMOOTH AND FREE FROM ANY TOOL MARK.
9. ALL BURN TO BE SMOOTH AND FREE FROM ANY TOOL MARK.
10. HOLE SHOULD HAVE A SURFACE FINISH  $\nabla$  FREE FROM ANY CHIPPING OR TOOL MARK.

 <b>BROMPTON HEAVY ELECTRICALS LTD.</b> BROMPTON		TYPE OF PRODUCT OR NAME OF CUSTOMER/PRODUCT	
		<b>TAZ009BZ</b> <b>TRACTION ALTERNATOR</b>	
mm	mm	mm	mm
3.0 B	59.10.21		
5.0 A	59.10.21		
1. K	59.10.21		

[illegible]