



PPX-DABG DEPARTMENT
BHARAT HEAVY ELECTRICALS LIMITED
HEEP: HARDWAR-249 403 (Uttarakhand)
FAX: +91 1334 226462
TEL: +91 1334 28 5462
E-mail: akshukla@bhel.in

Ref: PPX-DABG/EOI/23-04/03

Date: 23/08/2023

Notice Inviting Tender for empanelment of Indian manufacturers for various sub-assemblies of cover assemblies (Kit Davide Installation) of Super Rapid Gun Mount (SRGM) manufactured by BHEL

Bharat Heavy Electricals Limited (BHEL), a leading Central Public Sector Enterprise of Govt. of India company which is an integrated power plant equipment manufacturer and one of the largest engineering and manufacturing organizations in India, catering to the core infrastructure sectors of Indian economy viz. energy, transportation, industry, non-conventional energy and Defence. BHEL has been in the business for more than 59 years and has supplied more than half of power producing equipment installed in the country. Defence and Aerospace Business Group of Heavy Electrical Equipment Plant (HEEP), one of the major manufacturing units of BHEL located at Haridwar, Uttarakhand, is manufacturing Naval Guns for Indian Navy since 1994. **We are looking for reputed Indian manufacturers for various sub-assemblies of cover assemblies (Kit Davide Installation) of Super Rapid Gun Mount (SRGM) being manufactured by BHEL.**

The prospective vendor will be required to sign Framework confidentiality agreement cum undertaking (FCA) & complete the Supplier Registration (online - <https://supplier.bhel.in/>, PMD category - Description "Components / Assemblies of SRGM for indigenisation & PMD no: DF155). The Supplier Registration Form (SRF) duly filled will be assessed for manufacturing capability, quality systems being followed, organizational soundness and financial worthiness.

The offers received will be technically evaluated by BHEL & successful short listed parties will be asked to submit their detailed Techno-Commercial offers through formal NIT/Enquiry, for our future requirements. Vendors shall confirm that there is no deviation with respect to BHEL Specifications. However, deviations, if any, are to be listed as a separate attachment. The offers that do not meet the substantial requirements of our specifications are liable to be ignored.

Documents as per Annexure -2 (enclosed) are to be necessarily filled and submitted along with the technical offer.



PPX-DABG DEPARTMENT
BHARAT HEAVY ELECTRICALS LIMITED
HEEP: HARDWAR-249 403 (Uttarakhand)
FAX: +91 1334 226462
TEL: +91 1334 28 5462
E-mail: akshukla@bhel.in

Only Technical BID is to be submitted along with the documents mentioned above. The envelope containing the offer shall be duly sealed and super scribed as **“Technical Offer for various sub-assemblies of cover assemblies (Kit Davide Installation) of Super Rapid Gun Mount (SRGM) against Reference No. PPX-DABG/EOI/23-24/03, SUBMITTED BY (Name of company)”**.

The last date for submission of Technical offers is **13/09/2023**. The Technical Offers complete in all respect must be addressed to

HEAD OF MATERIAL MANAGEMENT,
Heavy Electrical Equipment Plant,
Bharat Heavy Electricals Limited,
HARIDWAR-249403 (Uttarakhand), INDIA.

Technical offers should reach before **13:45 Hrs (IST)** of closing date of NIT. Late offers will not be considered in any case. BHEL will not be responsible for any type of postal delay / incomplete information from vendor. For any further clarifications, feel free to contact the undersigned.

Ashutosh Shukla
23/08/2023
(Ashutosh Shukla)

DY MANAGER (PPX-DABG)

Expression of Interest for Empanelment of Indian manufacturers to manufacture critical components of Super Rapid Gun Mount (SRGM)

Introduction:

This Expression of Interest (EOI) seeks response from prospective Indian vendors who are capable of manufacturing of various sub-assemblies of cover assemblies (Kit Davide Installation) of Super Rapid Gun Mount (SRGM) which involved a precision machining as per general standards of defence industry and are willing to associate with Bharat Heavy Electricals Limited (BHEL) – HEEP, Haridwar.

Bharat Heavy Electricals Limited (BHEL), is a Central Public Sector Enterprise of Govt. of India company which is an integrated power plant equipment manufacturer and one of the largest engineering and manufacturing organizations in India, catering to the core infrastructure sectors of Indian economy viz. energy, transportation, industry, non-conventional energy and Defence. BHEL has been in the business for more than 59 years and has supplied more than half of power producing equipment installed in the country.

Broad Scope:

Manufacturing of critical components including material sourcing from approved sources as per BHEL documents. List of assemblies and with exploded view to be developed attached as Annexure-1.

After successful assembly in Super Rapid Gun Mount (SRGM) at BHEL end, the development of manufactured item (s) shall be declared successful. BHEL is expecting 40 nos. of same job order from its customer. BHEL presently intends to empanel a suitable Indian vendor for manufacturing these component (s) as per the response received from vendors.

Interested Parties having prior experience of manufacturing of similar components & proven manufacturing and machining capabilities are requested to submit their response along with required documents (Annexure-2) **latest by 13.09.2023.**

The prospective vendor will be required to sign Framework confidentiality agreement cum undertaking (FCA) & complete the Supplier Registration (online - <https://supplier.bhel.in/>, PMD category - Description "Components / Assemblies of SRGM for indigenisation & PMD no: DF155). The Supplier Registration Form (SRF) duly filled will be assessed for manufacturing capability, quality systems being followed, organizational soundness and financial worthiness.

In case any clarification is needed, parties may contact as per following details:

Ashutosh Shukla

Defence and Aerospace Business Group,

Heavy Electrical Equipment Limited,

Bharat Heavy Electricals Limited (BHEL), Ranipur,

Haridwar, Uttrakhand.

M: 7893845256

LL: 01334 285462

Emailid: akshukla@bhel.in

LIST OF ASSEMBLIES & CRITICAL COMPONENTS AND SCOPE OF WORK

1. Details of Major Assemblies in Command Axis

- a. Shaft
 - b. Master Gear
 - c. Lever
 - d. Right/Left Protection Assembly
- } (Material: Alloy Steel)

- Essential condition for vendor for these assembly:

- a. Manufacturer of precision components, Gear & Spline
- b. Inhouse Precision machine facility
- c. Prior experience of manufacturing of similar items.

- Scope of Work

- a. Procurement of Raw Material.
- b. Manufacturing of item as per Drawing
- c. Painting and Coating as per drawing as applicable.
- d. Assembly

2. Details of Major Assemblies in Cover

- a. Cover (Material: Unidirectional carbon epoxy tapes & Aramidic (Nomex))
- b. Gasket (Material: Valkollan)
- c. Right/Left Guide

- Essential condition for vendor for these assembly:

- a. Inhouse moulding facility.
- b. Prior experience of manufacturing of similar items.

- Scope of Work

- a. Procurement of Raw Material.
- b. Manufacturing of item as per Drawing
- c. Painting and Coating as per drawing as applicable
- d. Assembly

3. Details of Major Assemblies in Right/Left Lever

- a. Grooved Shaft
- } (Material: Alloy Steel)

- b. Gear
- c. Right/Left Lever

- **Essential condition for vendor for these assembly:**

- a. Manufacturer of precision components, Gear & Spline
- b. Inhouse Precision machine facility
- c. Prior experience of manufacturing of similar items.

- **Scope of Work**

-

- a. Procurement of Raw Material.
- b. Manufacturing of item as per Drawing
- c. Painting and Coating as per drawing as applicable.
- d. Assembly

4. Details of Major Assemblies in Module Pre- Assembly & Guide Cover Assembly

- a. Structure
 - b. Back cover
 - c. Guide (Material: SS)
 - d. Gasket/Fasteners & other loose items
- } (Material: Aluminum Alloy)

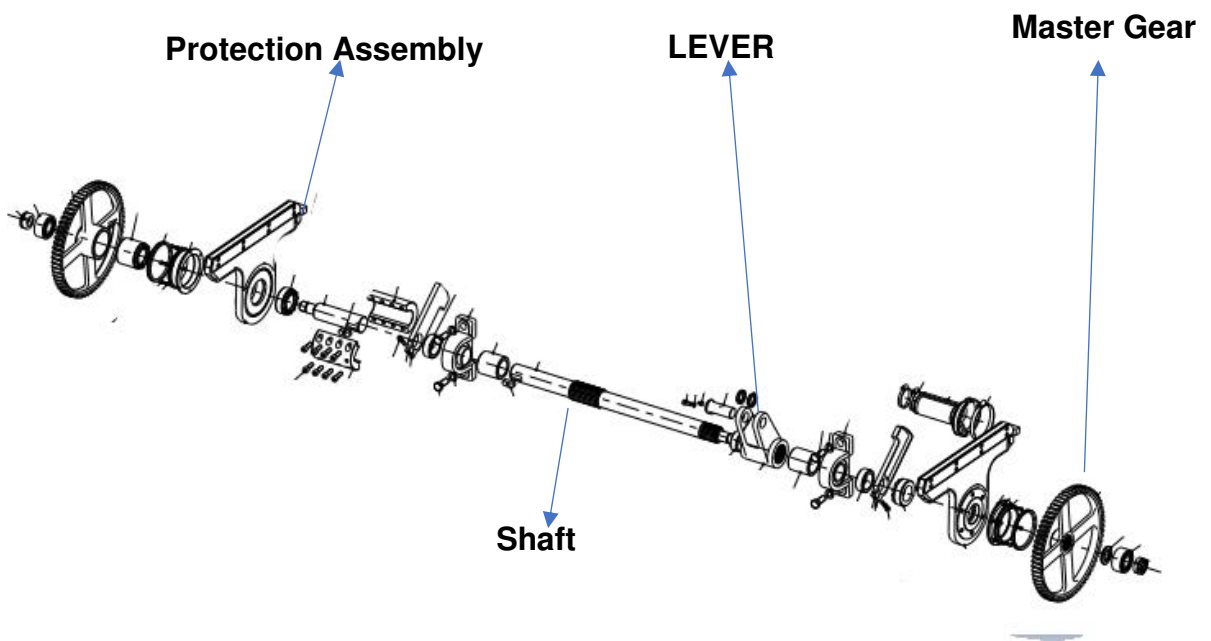
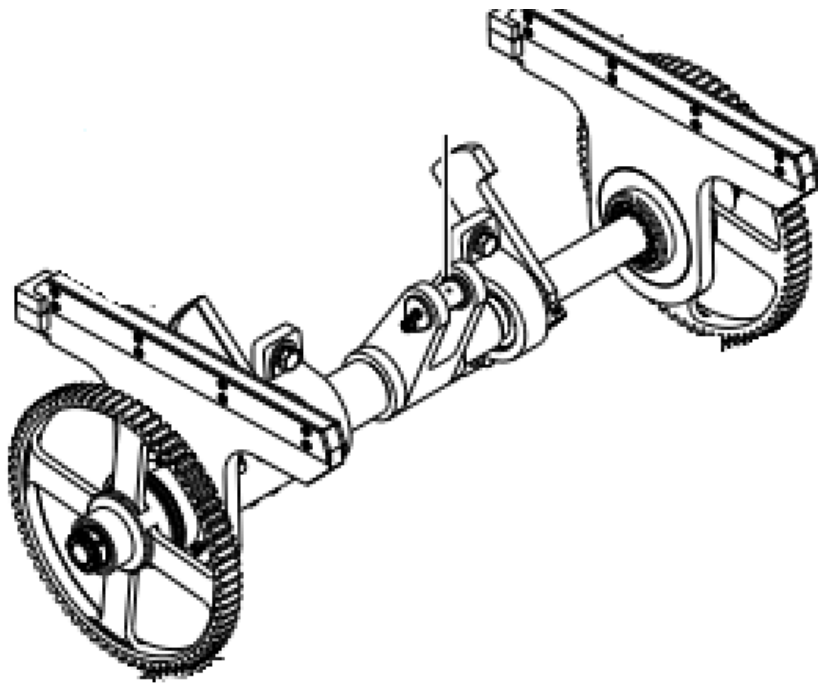
- **Essential Machining Facilities required for working on aluminium alloy sheet /plate (Sheet Metal Job Manufacturer)**

- a. Cutting M/c (Laser/Waterjet)
- b. Bending M/c
- c. Welding Facilities for Aluminium Alloy.
- d. WPS/PQR for Aluminium welding.
- e. Machining Facility for Joint plane/Drilling (Adequate for desired application)
- f. Prior experience of manufacturing of similar items

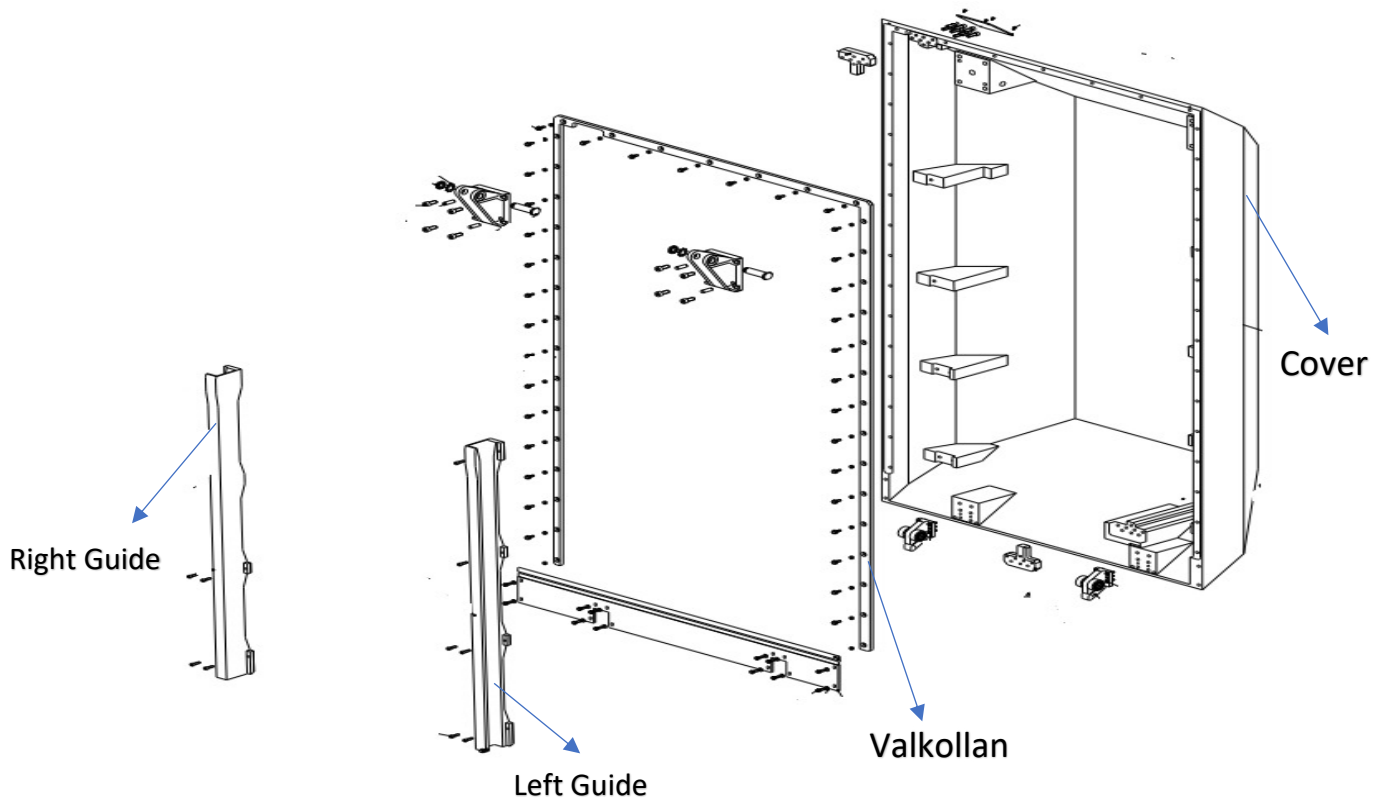
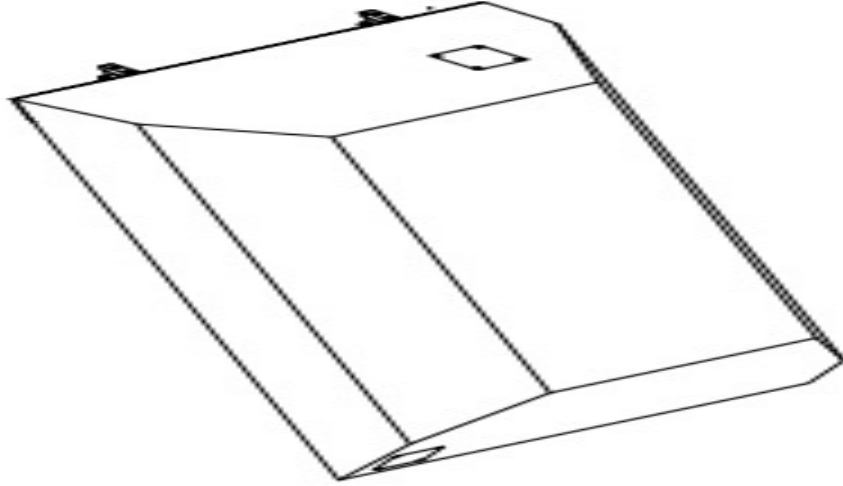
- **Scope of Work**

- a. Procurement of Raw Material.
- b. Manufacturing of item as per drawing
- c. Cutting & Bending as per Drawing as applicable.
- d. Welding as per Drawing as applicable.
- e. Heat Treatment (Stress Reliving) & Machining as per drawing as applicable.
- f. Painting & coating as per drawing as applicable.
- g. Final assembly

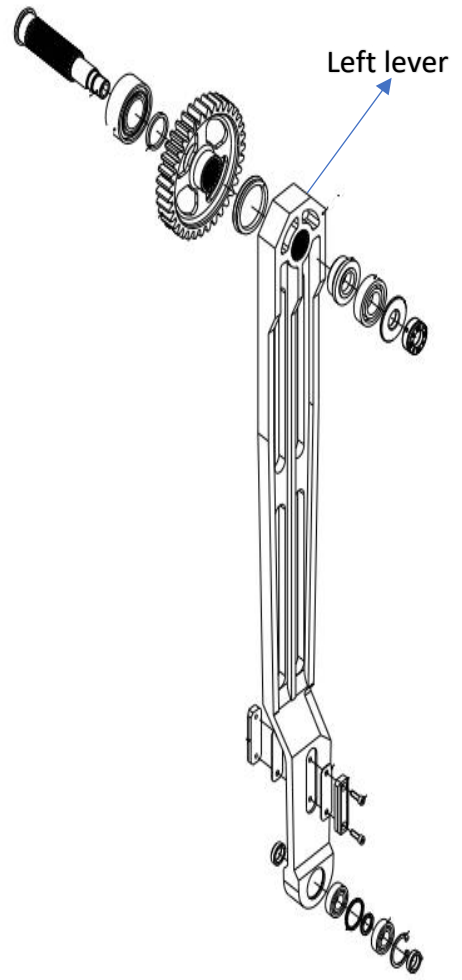
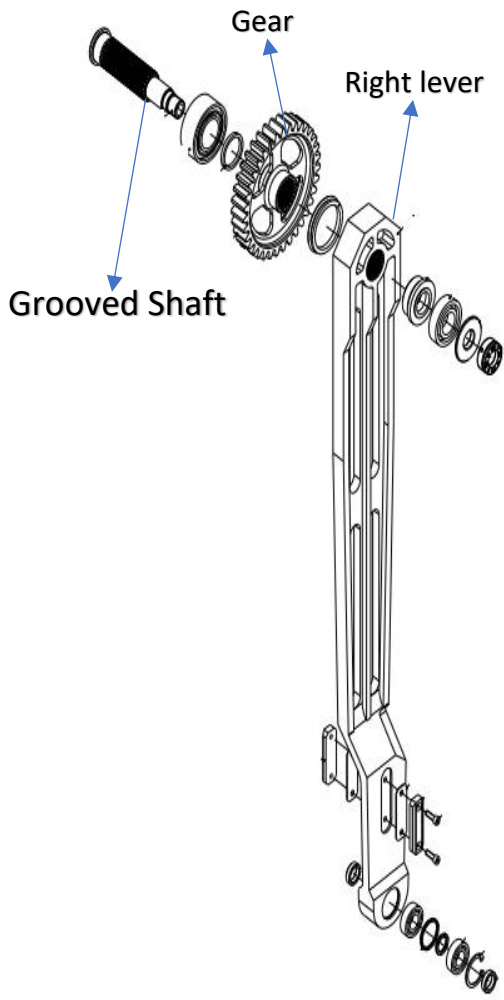
1. EXPLODED VIEW OF MAJOR ASSEMBLIES OF COMMAND AXIS



2. EXPLODED VIEW OF MAJOR ASSEMBLIES OF COVER

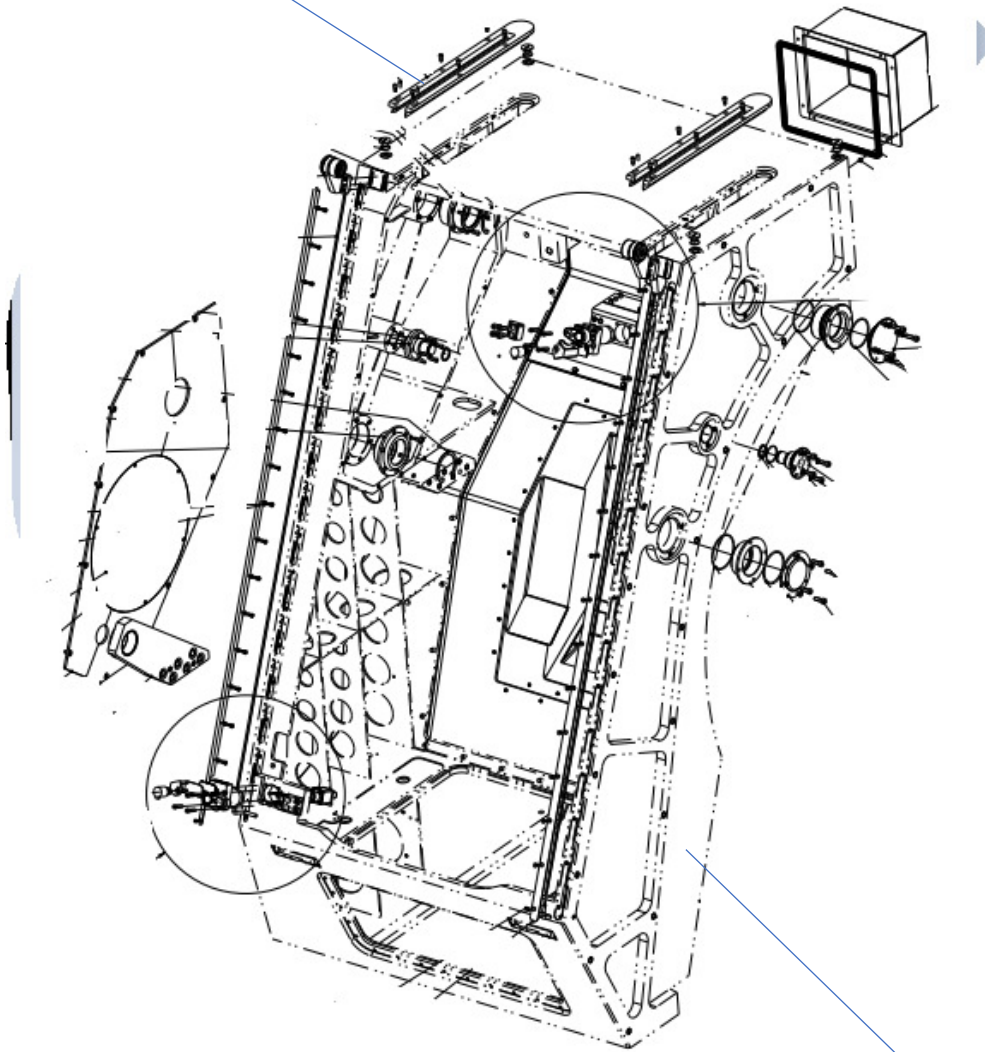


3. EXPLODED VIEW OF MAJOR ASSEMBLIES OF LEVER RIGHT / LEFT ASSEMBLIES

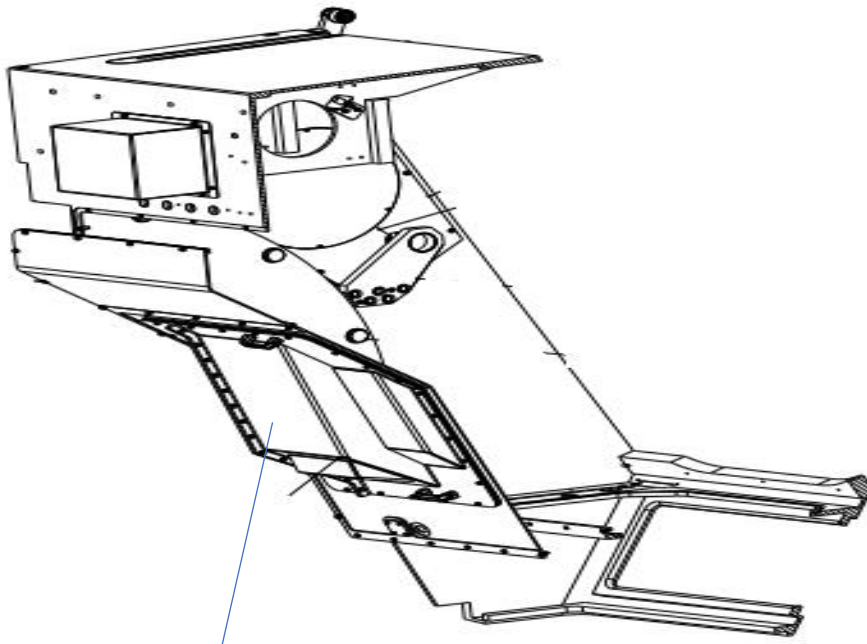


4. EXPLODED VIEW OF MAJOR ASSEMBLIES OF MODULE PRE ASSEMBLY AND GUIDE COVER ASSEMBLY

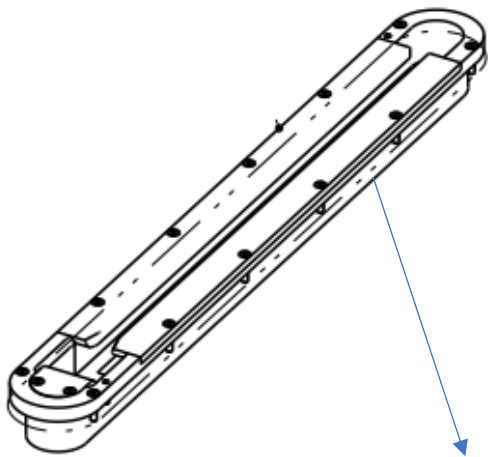
Guide



Structure



Back Cover Assembly



Guide Cover Assembly

LIST OF DOCUMENTS

1. Organisational Information – Name and Correspondence Address of the Firm/ Company to be registered.
2. Registration particulars – If registered with any of the BHEL Units
3. Manufacturing Facilities:
 - a. List of Manufacturing Facilities/Equipment's
 - b. List of Coating facilities. If In-house coating facilities not available, inform source of the same.
4. Inspection and Testing facilities – List of Inspection & Testing facilities / Equipment available.
5. Details of similar products
6. Prior experience of manufacturing of similar components.
7. Unpriced PO copies executed for similar components.
8. Standard Quality Plan
9. Quality Management System - Whether Supplier is ISO 9001, ISO 14000, OHSAS – 18000 Certified
10. List of Enclosures (Brochures, Catalogues etc.)
11. Financial Information