



An ISO 9001  
Company

## Bharat Heavy Electricals Limited

(High Pressure Boiler Plant)

Tiruchirappalli – 620014, TAMIL NADU, INDIA

MATERIALS MANAGEMENT

<b>TITLE</b> CONTINUOUSLY PREPAINTED GALVANISED STEEL SHEETS AS PER ATTACHED DRAWING	Phone: +91 431 257 7457/2577074 Fax : +91 431 252 0719 Email : rksamy@bheltry.co.in
--	---

	<b>Reference Number:</b> Enquiry 1801100775	<b>Enquiry Date:</b> 09.07.2011	<b>Due date for submission of quotation:</b> 04.08.2011
--	--	------------------------------------	---

You are requested to quote the Enquiry number date and due date in all your correspondences. This is only a request for quotation and not an order

**BHEL/Trichy is looking for empanelment of new vendors for supply of "Pre painted Galvanised Boiler Roof Sheets as per our attached drawing"**

BHEL commercial terms & conditions with Price Bid formats and all annexure can be downloaded from BHEL web site <a href="http://www.bhel.com">http://www.bhel.com</a> or from the Government tender website <a href="http://tenders.gov.in">http://tenders.gov.in</a> (public sector units) Bharath Heavy Electricals Limited) under enquiry reference "XXXXXXXXXX "	
Tenders should reach us before 14:00 hours on the due date Technical bid will be opened at 14:30 hours on the due date Tenders would be opened in presence of the tenderers who have submitted their offers and who may like to be present.	Yours faithfully, For <b>Bharath Heavy Electricals Limited</b>  DGM / MM

## Specification

Supply of Galvanized Roof Sheets - Metapoly with base metal of Mild steel conforming to I.S: 513

The material shall be galvanized with minimum grade zinc coating 275 grams / sq.mtr as per I.S: 277


The top side coating shall be 20 microns minimum of silicon modified polyester (SMP) painting and bottom side shall be 7 microns minimum of SMP painting, as per class - 2 I.S: 14246.

The color of the sheets shall be Blue (RAL 5012)

### Total Requirement

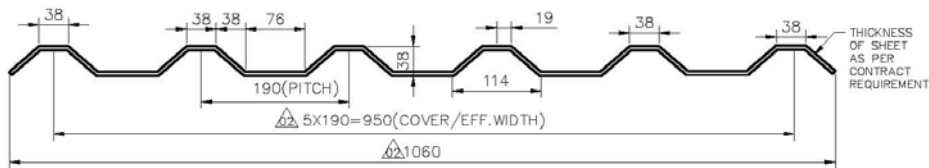
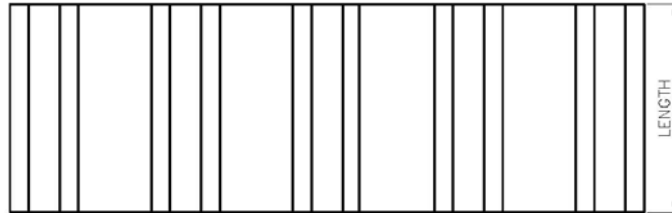
Sl. No	Description	Qty	Remarks
1	Galvanized Roof Sheet 0.63 X 1000 X 3000	320	
2	Galvanized Roof Sheet 0.63 X 1060 X 1500	180	
3	Galvanized Roof Sheet 0.63 X 1060 X 1600	53900	
4	Galvanized Roof Sheet 0.63 X 1060 X 2000	120	
5	Galvanized Roof Sheet 0.63 X 1060 X 2500	550	
6	Galvanized Roof Sheet 0.63 X 1060 X 3000	1080	
7	Galvanized Roof Sheet 0.63 X 1060 X 3300	2200	
8	Galvanized Roof Sheet 0.63 X 400 X 2440	2890	
9	Galvanized Roof Sheet 0.63 X 400 X 3000	30	

The project wise quantity will be intimate before opening of the price bid.

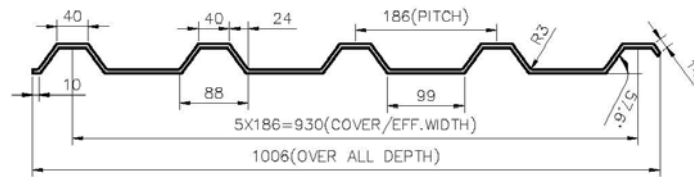
  
(R. KRISHNASAMY)  
Manager/ Purchase/FB/SD

CAUTION: THE INFO ON THIS DOCUMENT IS THE PROPERTY OF BHEL. IT MUST NOT BE USED DIRECTLY OR INDIRECTLY IN ANY WAY DETRIMENTAL TO THE INTEREST OF BHEL.

FOR TOLERANCES OF UNTOLERANCED DIMENSIONS DURING MANUFACTURE REFER PLANT STD. NO TP 023 0299



**TYPE-I**



**TYPE-II**

REV	DATE	ALTERED : S.SEMILA
02	29.07.06	CHD & APPD :R.J.K

DRAWING PITCH  
ADDED.

REV	DATE	ALTERED :
01		CHD & APPD :

TYPE-I & TYPE-II  
DETAILS SEPARTELY GIVEN

VARIANT NUMBER	DESCRIPTION	STD	MATERIAL		UNIT	WEIGHT	
			CODE	SPECN		A/C/P	QUANTITY



Bharat Heavy Electricals Ltd  
UNIT: HIGH PRESSURE BOILER PLANT  
TIRUCHIRAPALLI - 620014

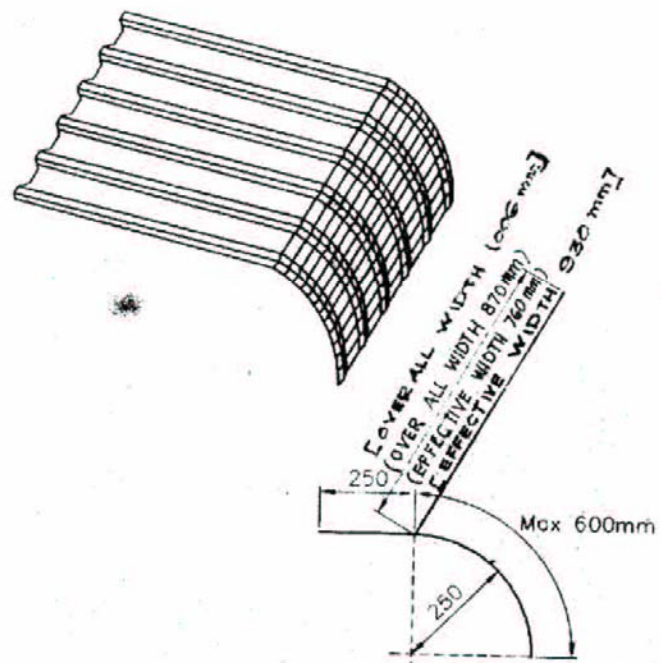
DRN	P.RAMACHANDRAN	SIGNATURE Sd.....	DATE 20.01.2000
CHD	M.B.K.RAJA	Sd.....	20.01.2000
APPD	R.RAMASAMY	Sd.....	20.01.2000

DEPT	ALL DIMENSIONS ARE IN MM	PROJECTION	SCALE	WEIGHT (Kg)	REF TO ASSY / OLD DWG
------	--------------------------	------------	-------	-------------	-----------------------

TITLE	DRAWING NO :	REV
<b>METAPOLY TRAPEZOIDAL PROFILE SHEET</b>	<b>4-35-611-00333</b>	<b>02</b>

CAUTION: THE MEMO ON THIS DOCUMENT IS THE PROPERTY OF BHEL. IT IS NOT TO BE USED DIRECTLY OR INDIRECTLY IN ANY WAY DETRIMENTAL TO THE INTERESTS OF BHEL.

REV 01	DATE	ALTERED : CHD & APPD :	REV 02	DATE	ALT: JAFFAR CHD: R.R.S.	ALL DIMENSIONS ARE IN MM FOR TOLERANCES OF UNTOLERANCED DIMENSIONS DURING MANUFACTURE REFER RELEVANT QCP / OP
OVER ALL WIDTH & EFFECTIVE WIDTH CORRECTED.			0.8 mm SHEET ADDED OVER ALL WIDTH & EFFECTIVE WIDTH MARKED			



01	METAPOLY VENTILATOR CURVE 1.0 MM THICK				
VARIANT NUMBER	DESCRIPTION	STD	MATERIAL CODE	A/C	UNIT
					UNIT WEIGHT
			MATERIAL SPECN		QUANTITY

		<b>Bharat Heavy Electricals Ltd</b> UNIT: HIGH PRESSURE BOILER PLANT TIRUCHIRAPPALLI - 620014		DRN B.S./A.R.	NAME <i>A. Raju</i>	SIGNATURE <i>[Signature]</i>	DATE 11.01.97	NO. OF VAR
DEPT ST		SCALE N.T.S.	WEIGHT (Kg)	APPD R.M.A.	REF TO ASSY / OLD DWG	ITEM NO	No OF ITEMS	
CODE 122	TITLE <b>METAPOLY TRAPEZOIDAL          PROFILE VENTILATOR CURVE</b>		CARD CODE U 01	DRAWING NO : <b>4-35-611-00321</b>		REV <b>02</b>		

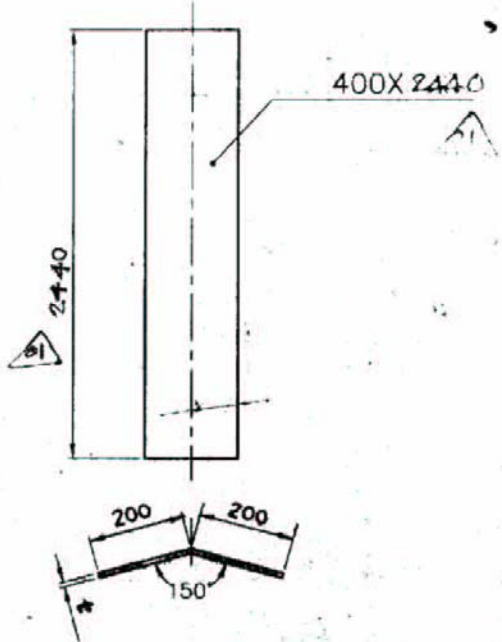
CAUTION: THE VIEW ON THIS DOCUMENT IS THE PROPERTY OF IHEL. IT IS TO BE KEPT IN CONFIDENCE AND NOT TO BE REPRODUCED IN ANY WAY DETRIMENTAL TO THE INTEREST OF IHEL.

ALL DIMENSIONS ARE IN MM  
FOR TOLERANCES OF UNTOLERANCED  
DIMENSIONS DURING MANUFACTURE  
REFER RELEVANT QCP / QP

### RIDGE PIECE

**NOTES:**  
1. META POLY SHEET  
(POLY STEEL) COLD  
ROLLED WITH ZINC  
COATING IN A CONTI-  
NUOUS HOT DIP  
GALVANISING LINE &  
SUBSEQUENTLY  
GIVEN 5 LAYERS OF  
ORGANIC COATING.

t = THICKNESS  
0.8mm, 1.0mm



REV 01	DATE 4/7/2011	BY CHANDRASEKAR	01	METAPOLY SHEET RIDGE PIECE t - TK.				
	t = THICKNESS 0.8mm, 1.0mm LENGTH = 2440 RADIUS 50.		ITEM NUMBER	DESCRIPTION	STD	MATERIAL CODE	UNIT	UNIT WEIGHT
						MATERIAL SPECN		QUANTITY

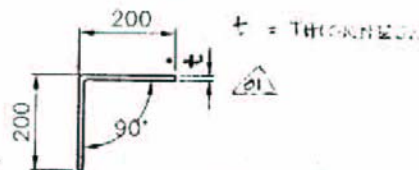
	<b>Bharat Heavy Electricals Ltd</b> UNIT: HIGH PRESSURE BOILER PLANT TIRUCHIRAPALLI - 620014		NAME DRN: A.RAJENDRAN	SIGNATURE 	DATE 08/07/11	NO. OF SHEETS
			QND: R.R.SAMY			
			APPR: R.M.A.			
DEPT ST CODE 122		SCALE 1:10, N.T.S.	WEIGHT (Kg):	REF TO ASSY / OLD Dwg	USE TO	BY THIS TIME
TITLE <b>DETAILS OF RIDGE PIECE</b>			CARD CODE U-01	DRAWING NO : <b>4-35-611-00317</b>	REV <b>01</b>	



CAUTION: THE INFO ON THIS DOCUMENT IS THE PROPERTY OF BHEL. IT MUST NOT BE USED DIRECTLY OR INDIRECTLY IN ANY WAY DETRIMENTAL TO THE INTEREST OF BHEL.

# BARGE BOARD

ALL DIMENSIONS ARE IN MM  
FOR TOLERANCES OF UNTOLERANCED  
DIMENSIONS DURING MANUFACTURE  
REFER RELEVANT GCP / OP



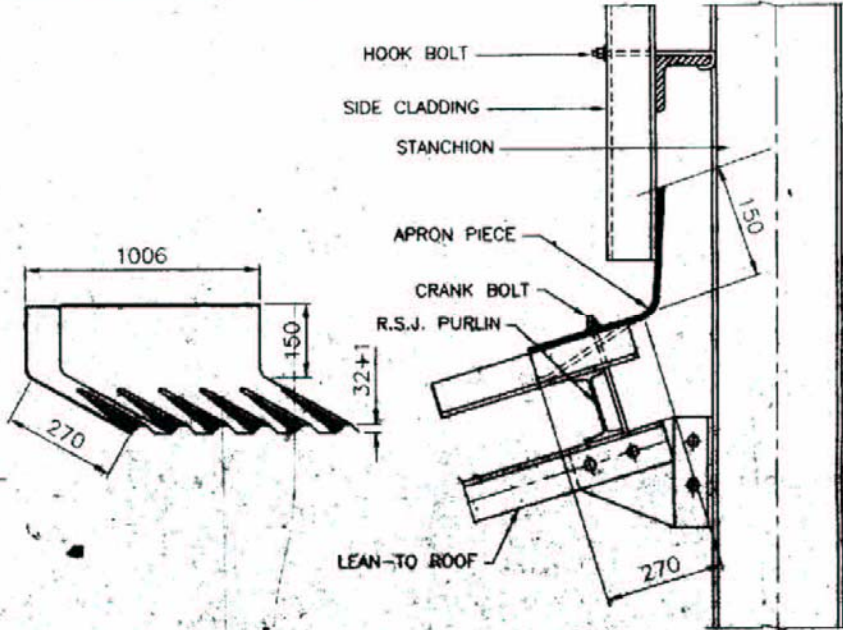
REV 01	DATE 21-10-2007	ALTERED BY CND/APPD	02	METAPOLY BARGE BOARD 0.8 MM TK.				
01			01	METAPOLY BARGE BOARD 1.0 MM TK.				
ZANG METAPOLY BARGE BOARD 0.8MM TK. ADDED								
ITEM NUMBER	DESCRIPTION			STD	MATERIAL CODE	A/C	UNIT	UNIT WEIGHT
					MATERIAL SPECN			QUANTITY

		<b>Bhorat Hedvy Electricals Ltd</b> UNIT: HIGH PRESSURE BOILER PLANT TRUCHIRAPALLI - 620014		DSN CHD APPD	NAME B.S/A.R R.R.SAMY R.M.A.	SIGNATURE 	DATE	NO. OF VAR
DEPT ST		SCALE 1:10	WEIGHT (Kg)	REF TO ASSY / OLD DWG		ITEM NO	NO OF ITEMS	161/182
CODE 122	TITLE <b>DETAILS OF BARGE BOARD CORNER PIECE</b>			CARD CODE U-01	DRAWING NO : <b>4-35-611-00323</b>		REV 01	

THE SIGNAL ON THIS DOCUMENT IS THE PROPERTY OF BHEL. IT MUST NOT BE USED DIRECTLY OR INDIRECTLY IN ANY WAY DETRIMENTAL TO THE INTEREST OF BHEL.

REV	DATE	ALTERED	JAFAR
01	3.10.97	CHD & APPD	
0.8 mm THICK SHEET			
ADDENDUM			

ALL DIMENSIONS ARE IN MM  
FOR TOLERANCES OF UNTOLERANCED  
DIMENSIONS DURING MANUFACTURE  
REFER RELEVANT QCP / OP



**APRON PIECE 110**

VARIANT NUMBER	METAPOLY SHEET 1.0mm THICK [0.8 mm]	S	MATERIAL CODE	A/C	UNIT	UNIT WEIGHT
	DESCRIPTION		MATERIAL SPECN			QUANTITY

		<b>Bharat Heavy Electricals Ltd</b> UNIT: HIGH PRESSURE BOILER PLANT TIRUCHIRAPALLI - 620014		DESIGNED BY S.S./R.R.	SIGNATURE 	DATE 11.01.97	NO. OF VARS
DEPT ST		SCALE N.T.S.	WEIGHT (Kg)	CHECKED BY R.A.S.	SIGNATURE 	DATE 16/1/97	NO. OF ITEMS
TITLE <b>METAPOLY TRAPEZOIDAL          PROFILE APRON PIECE</b>				DRAWING NO : <b>4-35-611-00320</b>	REV <b>01</b>		

**BHEL TRICHY  
MM / FB/SD**

REF: FB: PUR: 38MPS/OT

DATED: 04.07.2011

**SPECIAL CONDITIONS**

1. This tender is for the supply of Galvanized Roof Sheets - Metapoly with base metal of Mild steel conforming to I.S: 513 and galvanized with minimum grade zinc coating 275 grams / sqm as per I.S: 277 the top side coating shall be 20 microns minimum of silicon modified polyester (SMP) painting and bottom side shall be 7 microns minimum of SMP painting, as per class – 2 I.S: 14246.
2. The vendor shall have adequate experience in manufacturing and supply of Galvanized Roof Sheets.
3. Vendor shall indicate in their offer clearly the monthly tonnage that can be manufactured in their factory against the requirement and also their total manufacturing capacity in MT / Month.
4. The tender is in two parts. One part consisting of commercial and technical conditions and other with price details. Techno-Commercial bid and price bid are to be submitted in separate sealed covers. In addition to technical and commercial conditions, vendors who are not registered vendor of BHEL, Trichy have to submit the filled in "Supplier Registration Forms" (available in [www.bhel.com](http://www.bhel.com)) along with the technical bid. Based on this and other conditions, as well as capacity and capability, vendors will be short-listed. Both these covers are to be put in a single cover duly super scribing the Enquiry Number. The technical and commercial bid will be opened on the due date and based on the acceptance of techno-commercial bid and vendor evaluation, the price bid of the qualified vendors will be opened on a suitable date with due intimation.

Following will be the criteria for vendors to qualify:

- a. Vendor should have been approved by BHEL Trichy for this items under Permanent category OR
  - b. Vendor should submit the following documents for considering them as an approved vendor:
    - i. Duly filled-in Supplier Registration Forms.
    - ii. Availability of minimum manufacturing, handling, testing and measuring facilities as detailed in the Supplier Registration Form.
    - iii. BHEL will have the right for spot assessment of the facilities for assessment.
    - iv. Qualifying to our techno commercial requirements of the Enquiry.
5. BHEL reserves the right to increase or decrease the tendered quantity and split the tendered quantity among more than one tenderer and place orders accordingly in any proportion based on commitment, requirement and supplier's capability in terms of delivery and quality as assessed by BHEL.
  6. BHEL reserves the right to negotiate the L1 rate.



7. BHEL reserves the right to re-float the tender opened, if L1 price is not the lowest acceptable price to them inter-alia other reasons.
8. BHEL reserves the right to order on more than one vendor at the lowest acceptable price to BHEL.
9. BHEL standard LD condition is 0.50 % per week to a maximum of 15 % for the undelivered portion of materials.
10. a) BHEL general Payment terms is 90 % through Bank (Within 45 to 90 days) and balance 10 % after the receipt materials at site.  
OR  
b) 100 % payment will be made in 60 days from the date of receipt of materials at site.

  
(R. KRISHNASAMY)  
Manager/ Purchase/FB/SD