

**Ref: Enquiry No: WC/HQR/X042 E dated 29-01-11 due date 19-02-2011**

## Annexure-I

<b>TECHNICAL SPECIFICATION/PARTICULARS OF STRAND JACK SYSTEM</b>				
<b><u>Sr. No.</u></b>	<b><u>Description</u></b>	<b><u>Specification</u></b>	<b><u>Quantity</u></b>	<b><u>Details to be furnished by the bidder</u></b>
1	<b>STRAND JACK</b>	a) Capacity 225MT min b) Speed: 20 m / hr c) Capable of holding suspended load for min12 hrs.	<b>02 Nos.</b>	
2	<b>POWER PACK COMPUTER CONTROLLED</b>	a) 3 Phase, 50Hz motor suitable to operate jack. b) Pump Capacity-Suitable to operate jack c) Reservoir-suitable capacity d) Hose set-15mtrs. With quick coupler e) Data Cable-25 mtrs f) Air blast/Oil cooled system g) All hydraulic & electrical components of reputed manufacturers meeting international standards	<b>03 Nos</b>	
3	<b>CONTROL SYSTEM COMPUTER CONTROLLED</b>	a) Smart Control system (SCC) to control multiple jacks simultaneously. b) Load, Lift and strike reading on each cylinder. c) Over Load/ Load Detection alarm. d) Synchronisation of all jacks to any value. e) Provision for variable speed operation and/ or fine movement at final elevation shall be possible	<b>01 Nos</b>	
4	<b>STRAND DESPENSER</b>	a) Capacity suitable for strands supplied	<b>01 Nos</b>	
5	<b>STRAND GUIDE</b>	a) Suitable strand Guide	<b>02 Nos</b>	
6	<b>STRAND</b>	Suitable capacity-Load on one jack shall be approximately-225MT Each strand-126mtrs long	<b>4 sets</b>	
7	<b>ACCESSORIES</b>	All accessories required for operation & commissioning of the equipment shall be part of supply. Detailed list to be submitted with offer.		
8	<b>LIFTING PIN</b>	Lifting pins of 200 MT capacity suitable for 154 mm dia. hole in Boiler drum Lifting lugs (Ref-sheet 4,5,6,8)	<b>02 Nos</b>	

**Ref: Enquiry No: WC/HQR/X042 E dated 29-01-11 due date 19.02.2011**

9	<b>SPARES</b>	Suitable for Two years operation		
10	<b>STRAND RECOILER</b>	Suitable Size and Capacity	02 Nos	
11	<b>FIXED ANCHOR BLOCK</b>	As per the attached boiler drawing.Ref- sheet 4,5,6,8	02 Nos	
12	<b>DG Set</b>	a) Suitable capacity to operate two power packs simultaneously b) Automatic switch over and cut-off with power supply	02 Nos	
13	<b>ICTPN Box</b>	suitable to operate one power pack	02 Nos	
14	<b>Copper Bus bar (Junction Box)</b>	suitable to operate two power packs simultaneously	01 Nos	
15	<b>Power Cable</b>	a) From Power Pack to ICTPN box- 15 mtr b) From ICTPN box to Junction box- 02 mtr c) From Junction box to DG Set- 20 mtr	02 Nos 02 Nos 02 Nos	
16	<b>Container</b>	To be designed with provision of material handling using suitable brackets, anchor points and straps to pack inside and secure all material of strand jack system during transportation/storage from site to site safely		

1. First time on site commissioning of whole strand jack system located anywhere in India.
2. 1 week training of BHEL personnel at OEM's work regarding the operation and maintenance of the machine.
3. Pre- dispatch inspection as per the mutually agreed quality plan by two BHEL personnel at OEM's works for operation & maintenance.
4. 1 year Warranty.
5. Service and support after sale for 2 years from the date of purchase.

**Ref: Enquiry No: WC/HQR/X042 E dated 29-01-11 due date 19-02-2011**

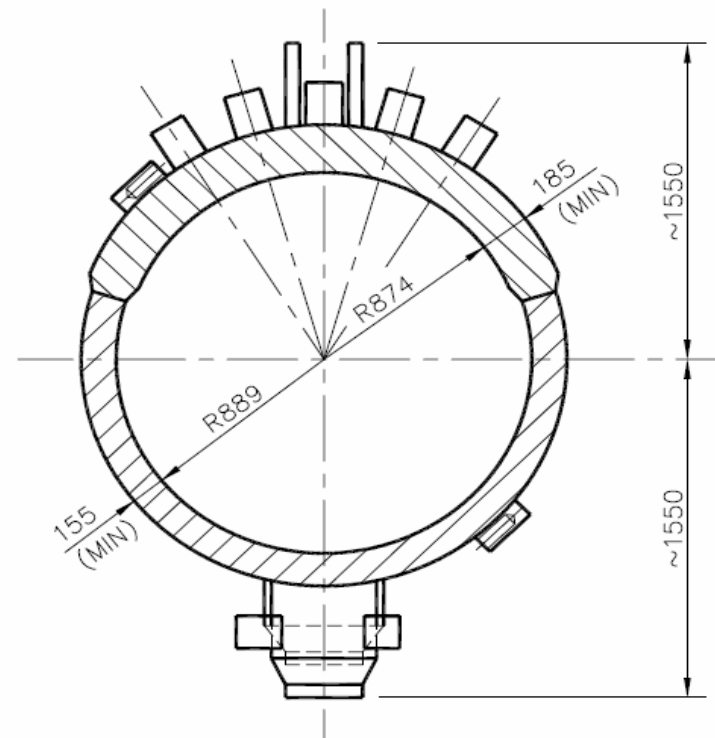
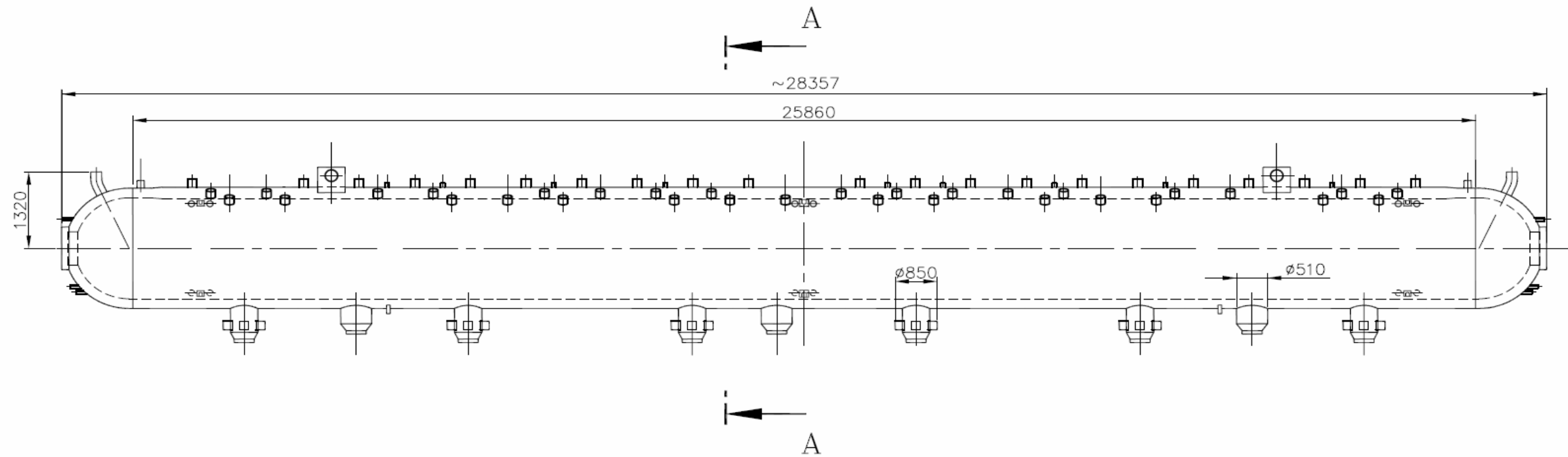
**Annexure-II**  
**Boiler Drum weight and elevation details**

<u>S.no.</u>	<u>Description</u>	<u>For 250MW</u>	<u>For 500MW</u>	<u>For 600MW</u>
1	Boiler Drum outer diameter	2.1m (approx)	2.3m (approx)	2.1m (approx)
2	Boiler Drum length	16.2m (approx)	24.22m (approx)	28.36m (approx)
3	Boiler Drum weight	133MT	230MT	260MT
4	Weight of suspension rod on which Boiler Drum hangs	9.64MT	14MT	
5	Luffing lug pin hole diameter	154mm	154mm	154mm
6	Centre to centre distance b/w 2 lugs	7.51m	15.545m	13.64m
7	Boiler Drum centre line elevation	58.606m	72.183m	80.6m
8	Elevation of structure top on which cat head assembly will be placed	65.6m	83.425m	95.15m
Arrangement – I. The CAT head beam will rest on WB.	Dimension of Cat head beam (mounting arrangement no. I) (Length x Breadth)	4m x 0.625m	4m x 0.625m	4m x 0.625m
	Centre to centre distance b/w cat head beam (*)	0.416m	0.416m	0.416m
Arrangement – II The CAT head beam will rest on drum suspension RB.	Dimension of Cat head beam (mounting arrangement no. II) (Length x Breadth)(**)	2.973m x 0.680m	2.973m x 0.680m	2.973m x 0.680m
	Centre to centre distance b/w cat head beam (**)	0.470m	0.470m	0.470m

Strand Jack has to lift boiler drum mentioned above.

1. Boiler Dimensions

ALL DIMENSIONS ARE IN MM



SECTION-AA

TOTAL WEIGHT ~ 260 T

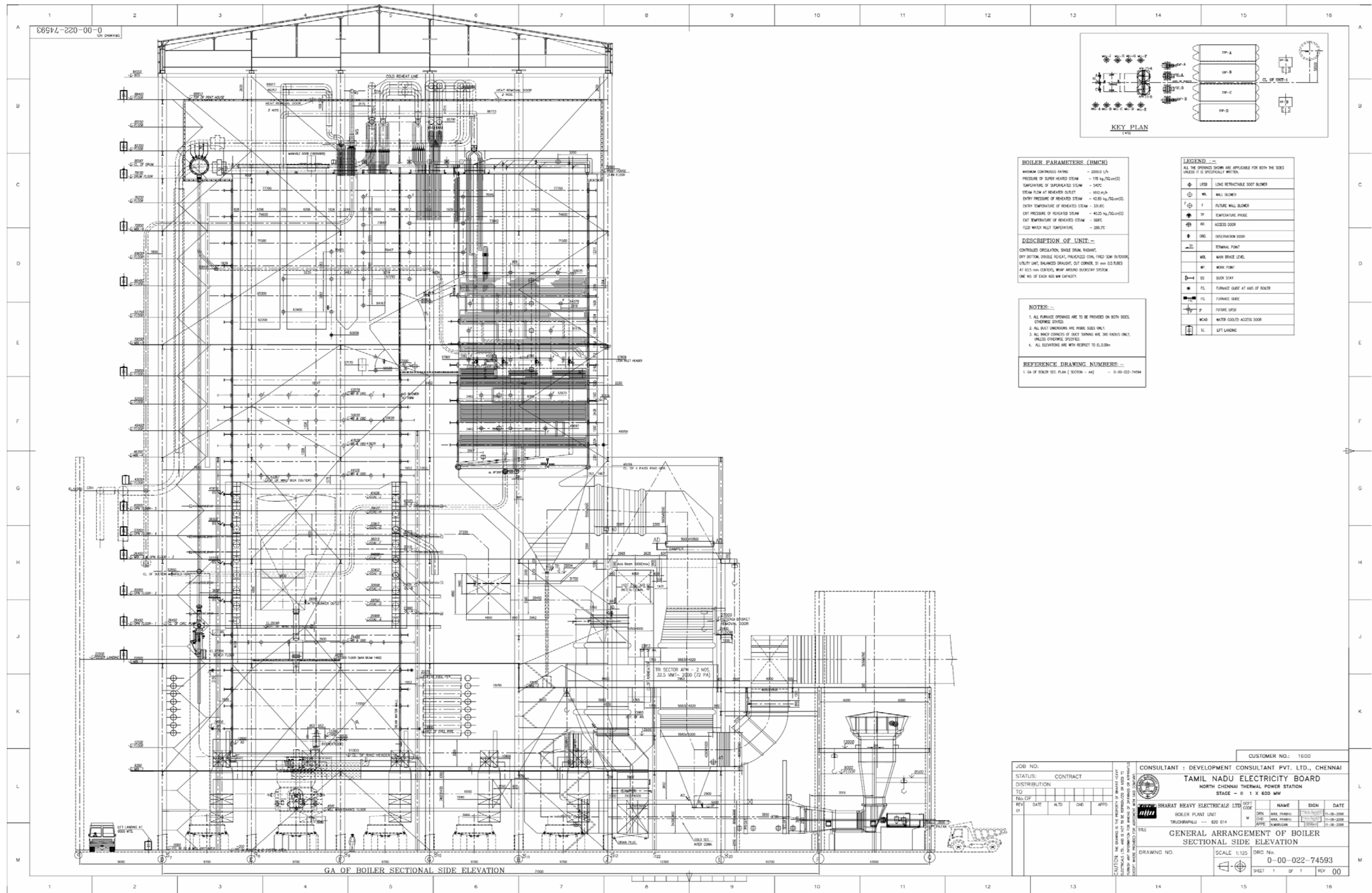
PROJECT : NORTH CHENNAI – 600 MW, CUST. No. 1600

BOILER DRUM SKETCH FOR TRANSPORT ANALYSIS



Bharat Heavy Electricals Ltd  
UNIT: HIGH PRESSURE BOILER PLANT  
TIRUCHIRAPALLI – 620014

2. Boiler Mounting Structural Diagram – Front View



## Boiler mounting structural – Top view

