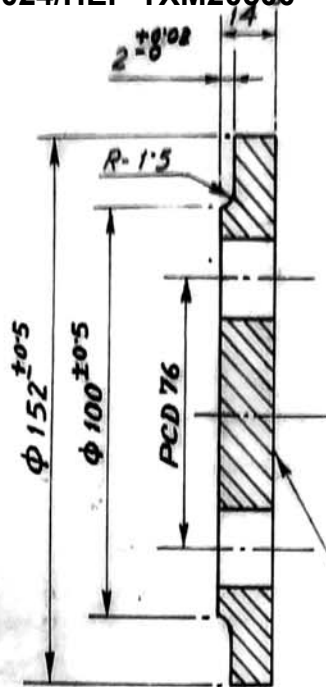
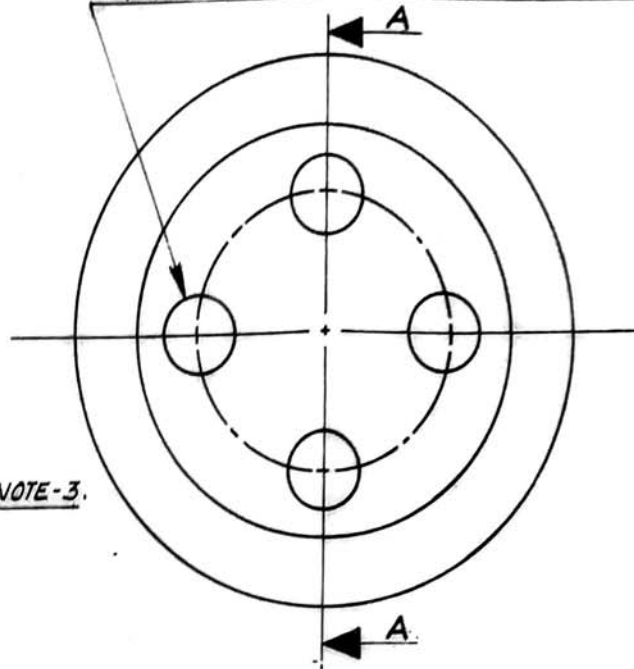


353527/2024/HEP-TXM20500




SECTION - AA

4 EQUALLY SPACED HOLES
 $\phi 20$ TOLERANCE ON EXACT POSITION ± 0.5



SEE NOTE-3.

NOTE

1. MATERIAL - STEEL TO IS:8500'91, Gr. Fe 570 B.
2.  (FINISH MACHINED 40 TO 80 MICRONS) ALL OVER.
3. MANUFACTURERS TO PUNCH/ENGRAVE THEIR IDENTIFICATION MARK AT THE LOCATION SHOWN.

Signature Not Verified

Digitally signed by
GAYA CHAND
GHOSH
Date: 2022.04.23
12:41:19 ISTReason: IREPS-CRIS
Location: New Delhi5528/
Q39C & D
NO.

REF.

PART
DRG. NO.

PINION RETAINING PLATE

1 NO.

SEE

NOTE-1

-

DESCRIPTION

QTY./
TM.

MATL.

SPEN.

WT. OF
EACH

DGN.

DATE

NAME

HITACHI TRACTION MOTOR

HS:15250A

DRN.

CKD.

09.10.98

R. D. S. O.

TRD.

28.8.98

U.K. BISWAS

COMP.

12.10.98

M. S. PAL

SCALE

N.T.S.

PINION RETAINING

PLATE

CHITTARANJAN
LOCOMOTIVE WORKS
WEST BENGAL, INDIA

APPROVED -

12-10-98

NO. 4TWD.095-094

ALTERATIO