

Technical drawing of a mechanical part, showing three views: front, top, and side. The dimensions are given in millimeters.

Front View:

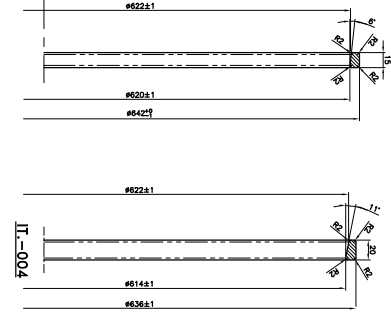
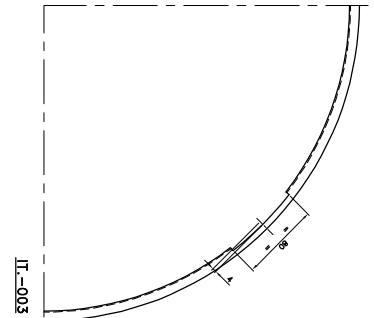
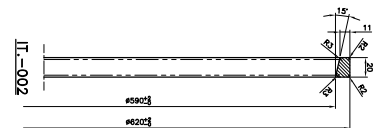
- Overall width: 120
- Overall height: 32
- Distance from top edge to center of holes: 15
- Distance between centers of holes: 18
- Distance from bottom edge to center of holes: 20
- Two circular holes with diameter $\varnothing 15$

Top View:

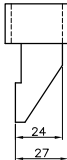
- Overall width: 72
- Overall height: 32
- Distance from left edge to center of holes: 16
- Distance between centers of holes: 23
- Distance from right edge to center of holes: 16
- Distance from bottom edge to center of holes: 22
- Two circular holes with diameter $\varnothing 15$
- Radius of fillet: $R34$

Side View:

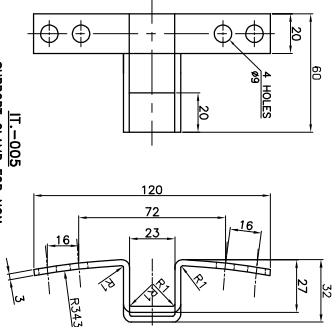
- Overall width: 32
- Overall height: 22
- Distance from top edge to center of hole: 22
- Distance from bottom edge to center of hole: 19
- One circular hole with diameter $\varnothing 15$



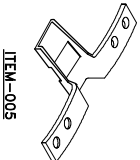
1. MATERIAL & TEST:- AS PER IS10192/82, Gr. "EP-3".
2. CLASS FIBRE REINFORCEMENT-CONTINUOUS CLASS 'E' GLASS FIBRE REINFORCING 30 OR 60 ENDS.
3. RESIN EPOXY.
4. RING TO BE MOULDED IN STEEL MOULD TO ACHIEVE DIMENSIONAL CONSISTANCY.
5. RING TO BE REMOVED FROM MOULD AFTER COLD SET (24 HRS.) AT ROOM TEMPERATURE.
6. BRACKETS TO BE DE-BURRED & FINISH BLACKOZIDED



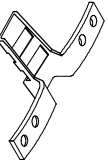
IT.-006
SUPPORT CLAMP FOR CONNECTING
END OVERHANG



IT.-005
SUPPORT CLAMP FOR NON
CONNECTION OVERHANG



ITEM-005



TEM-006

[illegible]

28 → CARD TYPE-3

28 → CARD TYPE-1

ADDITIONAL INFORMATION

REF. DRG. NO. 3TWD.09

STATUS OF DRAWING

TYPE OF PRODUCT OR
NAME OF CUSTOMER/PROJECT

6FRA-6068

DISTRIBUTION OF PRINTS

| | |
|---------|---------|
| TME - 1 | TNX - 1 |
| TXM - 3 | |



**BHARAT HEAVY ELE
BHOPAL**

| DRN | NAME | | SIGN | DATE | NO. OF VAR. |
|------|-------|-------|----------------------------|----------|----------------|
| | AJ/PT | AJ/PT | | | |
| DRN | SDB | | <i>gibson</i> | 05.06.21 | |
| CKD | AJ/PT | | Walt / P. J. J. | 05.06.21 | |
| APPN | AJ/PT | | Walt / P. J. J. | 05.06.21 | 00 |

| REV. DATE | ALTERED | REV. DATE | ALTERED |
|-----------|---------|-----------|---------|
| | CHECKED | | CHECKED |
| | APPD. | | APPD. |

| DATE | ALT. | SDB | Altitude |
|---------|---------|-----|----------|
| 09.4.22 | CHK. AJ | PT | Altitude |
| | APPD AJ | PT | Altitude |

| REV. | DATE | ALTERED | SDB |
|------|---------|---------|-------|
| | | CHECKED | AJ/PT |
| 01 | 28.6.21 | APPD. | AJ/PT |

| DEPT. TIME | UNTOL. DIMS. GR. 'M' |  | SCALE NITS | WEIGHT N |
|---------------|-------------------------|---|---------------|-------------|
|---------------|-------------------------|---|---------------|-------------|

| REF. TO ASSY. DRG. | ITEM NO. | NO. OF ITEM |
|--------------------|----------|-------------|
| 7 445 77 64 057 | 001 TO | 008 |

DIMENSION REV
INLINE WITH RE
CLW DRAWING.

TITLE

ACCESSORIES OF 3 PHASE

STATOR CHAMBER

| DRAWING NO. | REV. |
|-----------------|----------------|
| 3 445 31 64 058 | 02 |
| SHT. NO. 01 | NO. OF SHT. 01 |