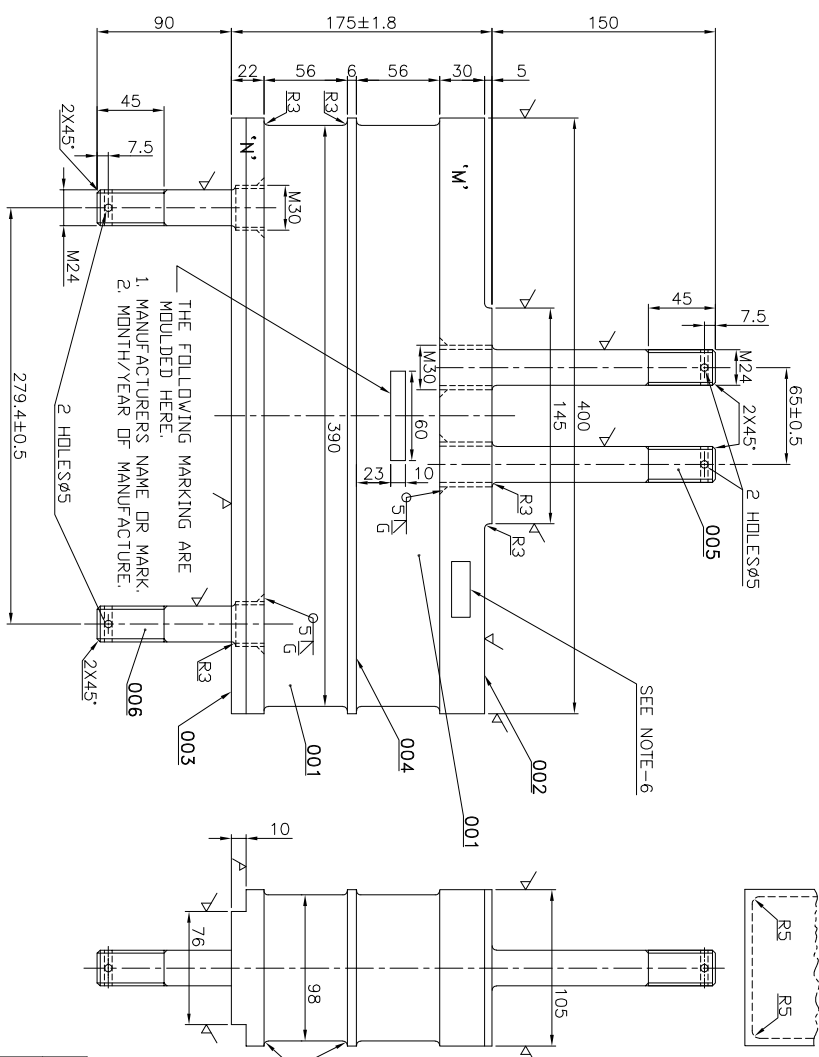


STYLE LIST		
VAR.NO.	DESCRIPTION	ST.NO.
00	MULTIPLE BONDED SANDWICH MOUNTING	BP909471695

SPECIFICATION.		
SYNTHETIC RUBBER COATING	CHLOROPRENE RUBBER PAINT COATED TWICE	
THICKNESS	175±18 MM	
SPRING CONSTANT (COMPRESSION)	δ (4600 KGF)→δ(2800 KGF) =7.9±0.8MM	
TENSILE		
TEST	TENSION	MINIMUM. 150K.GF /CM ²
	ELONGATION	MINIMUM. 400%
PERMANENT SET (25% COMPRESSION)	MAXIMUM 25%	
ALLOWABLE SHEARING STRAIN.	MAXIMUM 20%.	

- NOTES:-**
1. VARIATION OF TOLERANCE = 175 ± 1.8 MM (MEAN) (175+0.9 MM)
 2. IT. 001 TO 004 TO BE BONDED TOGETHER.
 3. CLAMP/STEEL END PLATE: -
CLAMP/SHEAR TEST:-
ON A FIXTURE VERTICALLY, APPLY VERTICAL LOAD ON THE TOP 'M'. DEFLECT THE MOULDING Laterally BY 70 MM THREE TIMES AT ROOM TEMPERATURE. RUBBER DAMPER SHOULD NOT SHOW PEELING OFF OR ANY OTHER DEFECT AND NO FAILURE OF BOND SHOULD BE VISIBLE.
 4. APPLY RUST PREVENTIVE ON SPECIAL BOLTS, IT. 005 & 006, ALSO PROTECT THESE ITEMS WITH A SUITABLE PLASTIC SLEEVE TO AVOID DAMAGE OF THREADS DURING TRANSPORT.
 5. PAINTING COLOR: BLACK
- TM4305 TO BE PINCHED AT THE LOCATION SHOWN

[illegible][illegible]

	REV.	DATE	CHECKED BY:	SIGNED SD -	REV. NO. NO.	TITLE	DRAWING NO.
ZONE I	NEW	APPROVED	(NAME)	- SD -	REF TO ASS'D DRG.	006	08
04	28.4.14	APR.BP.			24391528002	001	
ZONE II	NEW	DATE	CHECKED BY:	SIGNED SD -	REV. DATE	FILED NO. NO.	
03	31.1.96	APR.BP.		- SD -	03	006	
ZONE III	BOM WT.	1.2, 12.7, 7.73, 2.0, 0.5, 0.9 WERE NOT ON.					
ZONE IV	MAT. SPECN FOR TT-001, JIS-K6386-A(1T) & DIM. 6386-AO, 6B1K & DIM. 105±0.5 (E/4) WAS ON.						
ZONE V	NUT IN SPECIFICATION TABLE 'MAXIMUM' WAS NOT ON.						
		TITLE					
CODE	TIME	SCALE	WEIGHT(G.)	REV.	DATE	FILED NO.	
AA0230C208	DM. 6"/M/T	NTS	26.5	001	006	008	
MULTIPLE BONDED SANDWICH MOUNTING							
DRAWING NO. 24391528001							
SHI. NO. 01				NO. OF SHI. 01			