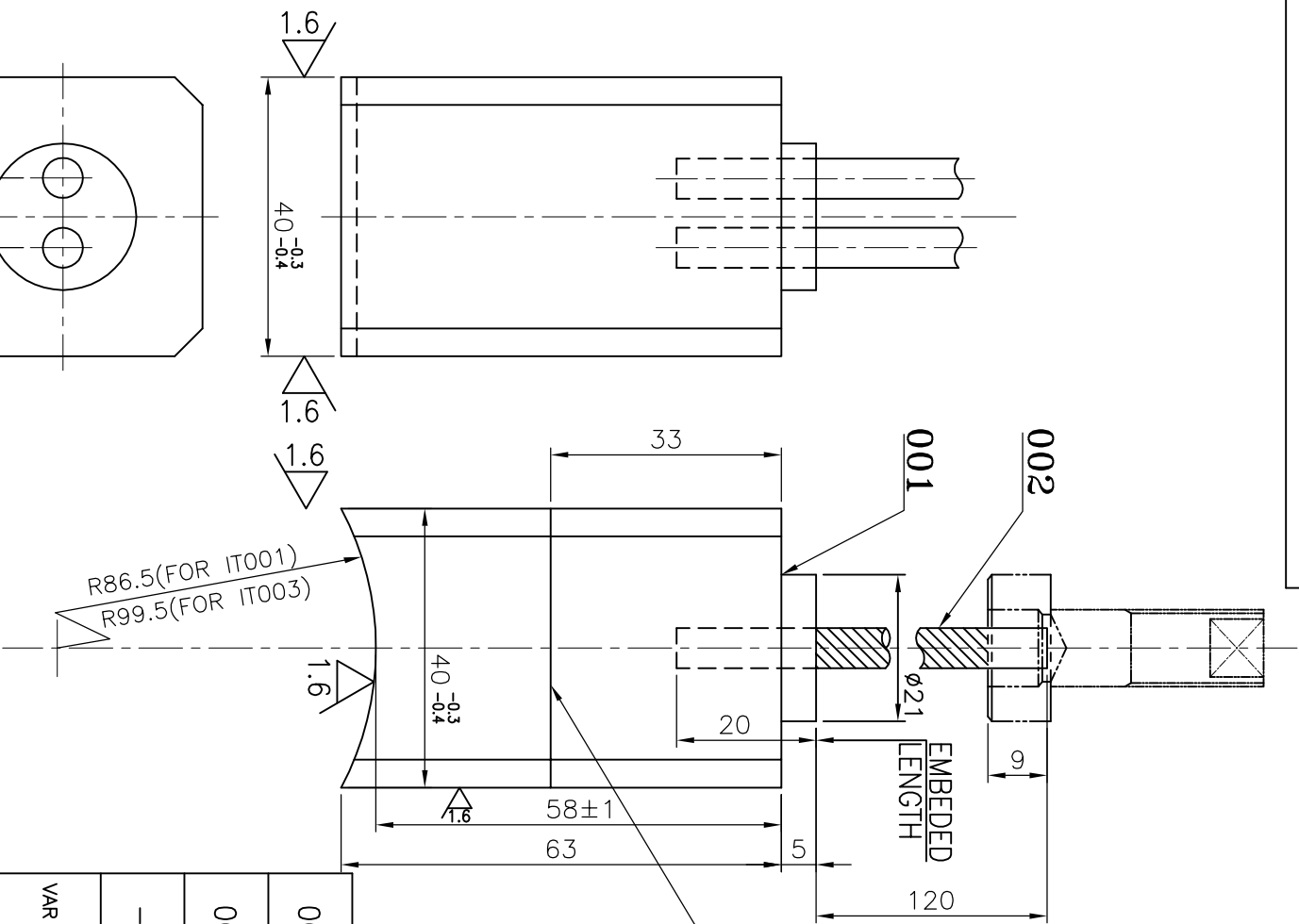


100 30 31 544 3 NO. ON DRAWING



ON BOTH OUTER FACES OF THE
BRUSH WEAR LIMIT LINES ARE
TO BE MARKED, WIDTH 0.5 DEPTH 0.5

NOTES:-

1. CONNECTION OF SPECIAL BOLT AND LEAD WIRE SHALL BE SOLDERED. THE LEAD WIRE OUT OF SPECIAL BOLT SHALL NOT BE STAINED WITH SOLDER.
2. LEAD WIRE SHALL BE SOLDERED WITH TWO STRAND WIRES.
3. MATERIAL FOR ITEM 002 IS TIN COATED ANNEALED COPPER WIRE TO JIS C 3152 & SIZE IS $\phi 0.12 \times 47 \times 3 \times 7$.
4. THE GRADES OF BRUSH (IT. 001) ARE AS FOLLOW:-
BM51-M/S ASSAM CARBON PRODUCTS LIMITED.
BE-14ZI-M/S MERSEN INDIA PVT. LIMITED.
BSQR-M/S SHUNK METAL & CARBON.
5. VAR. 00 FOR IM3601AZ & VAR 01 FOR IM3302AZ.

THE INFORMATION ON THIS DOCUMENT IS THE PROPERTY OF BHARAT HEAVY ELECTRICALS LIMITED.
IT MUST NOT BE USED DIRECTLY OR INDIRECTLY IN ANY WAY DETRIMENTAL TO THE INTEREST OF THE COMPANY.

| | | |
|---------------|--------------|---------------|
| INVENTORY No. | SIGN. & DATE | REF. DRG. NO. |
|---------------|--------------|---------------|

| | | |
|-----|------|----------|
| REV | DATE | ALTERED |
| | | CHECKED |
| | | APPROVED |

| | | |
|-----|----------|----------|
| REV | DATE | ALTERED |
| 02 | 29.03.18 | CHECKED |
| | | APPROVED |

VAR.01 & NOTE-5 ADDED.

| | | |
|------------------------|--|--|
| ADDITIONAL INFORMATION | | |
| STATUS OF DRAWING | | |
| DISTRIBUTION OF PRINTS | | |
| TME - 1 | | |
| TXM - 3 | | |
| TNX - 1 | | |

| | | | |
|---|--|-------------------|-----------------|
| TYPE OF PRODUCT OR NAME OF CUSTOMER/PROJECT | | IM3601AZ/IM3302AZ | |
| BHARAT HEAVY ELECTRICALS LTD. BHOPAL | | DRN. | A.JHARIA |
| | | CKD. | D.K. |
| | | APPL. | S.K.Y. |
| | | REF. TO ASSY. | 24451303001 |
| | | ITEM NO. | 005 |
| | | NO. OF ITEM | 002 |
| TITLE | | DRAWING NO. | 3 445 13 03 001 |
| | | REV. | 02 |