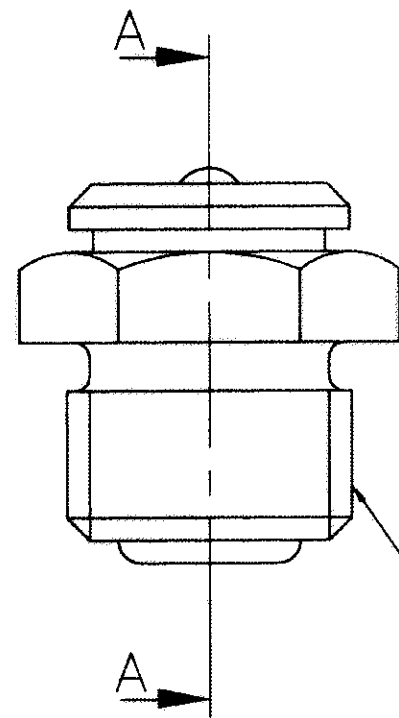
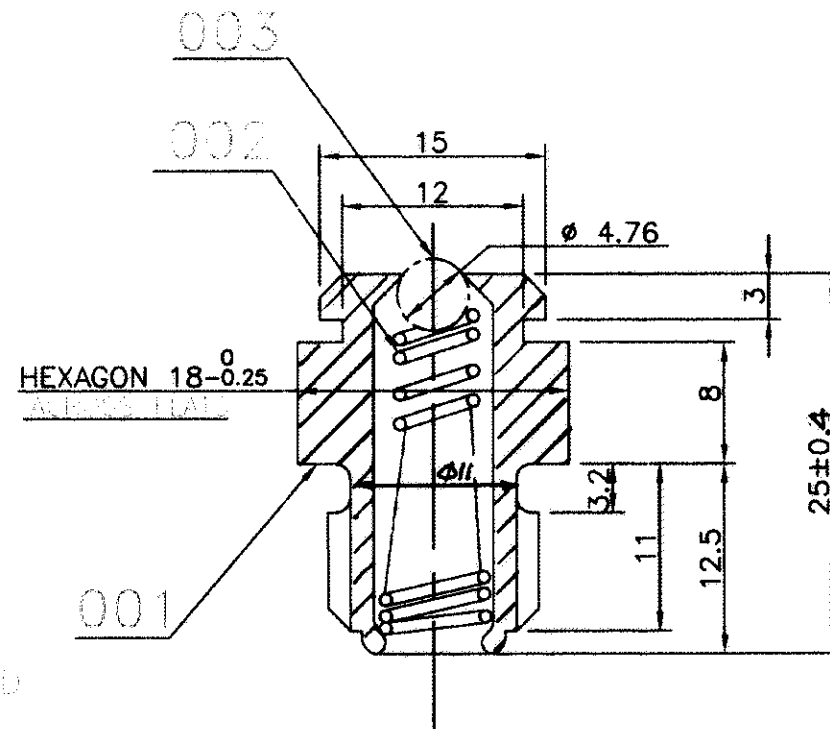


THE INFORMATION ON THIS DOCUMENT IS THE PROPERTY OF BHARAT HEAVY ELECTRICALS LIMITED. IT MUST NOT BE USED DIRECTLY OR INDIRECTLY IN ANY WAY DETRIMENTAL TO THE INTEREST OF THE COMPANY.

34394028003

DRG. NO.

1/4" R.P. THREAD
PARALLEL

SECTION AA

STYLE LIST

VAR.	IT.NO.	STYLE NO.
00	-	BP9094715457

NOTES:-

1. DIFFERENT NIPPLE TO BE DIMENSIONED TO
AA0673603 AND AA0673604.
2. ALTERNATE 1/4" BSP GREASE NIPPLE
LEGALLY NO. 000 CAN BE USED
3. STD. NO. 0001771846

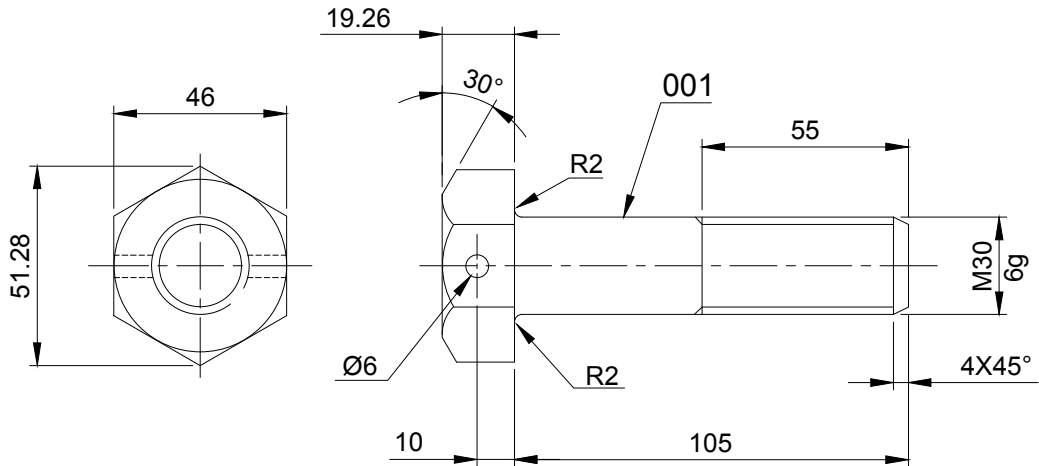
VAR	00	REMARKS	VAR	NO.	ITEM	NO.	DESCRIPTION	STD.	DRAWING NO.	IT.NO.	MATL. CODE	UNIT	UNIT WT.	QTY.	ZONE
001	B.O.		003		BALL						AISI304	KG	0.01		
001	B.O.		002		VALVE SPRING						AA10301	KG	0.01		
001	B.O.		001		GREASE NIPPLE BODY						AA12114	KG	0.02		

28		CARD TYPE-3		28		CARD TYPE-1		28		CARD TYPE-2	
ADDITION INFORMATION				TYPE OF PRODUCT				TM 4303 AZ/AG3101,AG-51,BM-2101 BY, H515250			
STATUS OF DRAWING				OR				NAME OF CUSTOMER/PROJECT			
DISTRIBUTION OF PRINT				BHARAT HEAVY ELECTRICALS LTD.				BHOPAL			
TME-1 TXM-3				DRN				D.KHANGAN			
TNX-1				CKD				SGD			
				APPD				AKD			
REV				DATE				SCALE			
07				14.02.23				NTS			
ALTERED				GRADE OF UNTOL				WEIGHT (kg)			
CHECKED				DIM. & M/Y				0.04			
APPROVED				AA0230208				REF. TO ASSY. DRG.			
DRAWING				TITLE				04394328002			
04394328003				GREASE NIPPLE				04391560003			
04391531104				DRAWING NO.				009			
				34394028003				013			
				SHEET NO.				01			
				NO. OF SHEET				01			

2023/HEP-TAM21300


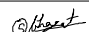
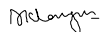
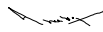
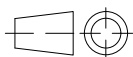
THE INFORMATION ON THIS DOCUMENT IS THE PROPERTY OF BHARAT HEAVY ELECTRICALS LIMITED. IT MUST NOT BE USED DIRECTLY OR INDIRECTLY IN ANY WAY DETRIMENTAL TO THE INTEREST OF THE COMPANY.

5/2023/HEP-TAM21300																	
REV.		DATE		ALTERED		REV.		DATE		ALTERED		ADDITIONAL INFORMATION					
02		18.08.15		CHECKED		01		21.03.13		CHECKED							
				APPROVED						APPROVED							
IN BOM IT.002, M30 SPRING WASHER WAS M30 MACHINED WASHER & MATL. SPEC. IS 1367 WAS 1364. VIEW IT.002 & NOTE-3 DELETED.						DIMNS. 105 & 55 WERE 112 & 62 , IN BOM IT. 002 SPEC. IS 6649 WAS IS 1367 PART 17.						STATUS OF DRAWING					
REV.		DATE		ALTERED		REV.		DATE		ALTERED		DISTRIBUTION		TME-1		TXM-3	
03		14.02.18		CHECKED		04		23.07.18		CHECKED		OF PRINTS		TNX-1			
				APPROVED						APPROVED							
NOTE-3 ADDED. IN BOM IT. 002 SPEC. AA7164001 WAS IS:1367 PART-17.						NOTE- 4 ADDED.											



NOTES:-

1. ITEM 001 & 002 TO BE ZINC PLATED TO AA0673603 & PASSIVATED TO AA0673604 PLATING THICKNESS 0.013 TO 0.015 MM.
2. ITEM 001 TO BE 100% MAGNETIC CRACK DETECTED TO BP0850178.
3. FOR IT.001, THREADS TO BE MANUFACTURED BY ROLLING PROCESS ONLY.
4. IT. 002 SHALL BE AS PER IT. 008 OF DRG. NO. C450056.

REF. DRG. NO.	SEE NOTE- 4		002	SPRING WASHER M30										
			001	BOLT HEX. HD. M30 X 105 -10.9 P										
	65		75	25	27	29	58	59	46	54	55	56	68	
	REMARKS		ITEM NO.	DESCRIPTION		STD	MATL. CODE		MATL. SPCN.		A C	UNIT	UNIT WT.	
SIGN. & DATE	28		CARD TYPE-3		28		CARD TYPE-1		28		CARD TYPE-2			
			BHARAT HEAVY ELECTRICALS LTD. BHOPAL			NAME		SIGN		DATE		NO. OF VAR.		
					DRN	S.D.B.				07.02.12				
					CKD	D.K.				07.02.12				
		APPD	A.S.				07.02.12							
INVENTORY NO.	DEPT	TME		GRADE OF UNTOL.DIM.				SCALE	WEIGHT (K.G.)		REF. TO ASSY. DRG.		ITEM NO.	NO. OF ITEM
	CODE	405				NTS				0 439 31 80 001		012 022		
	TITLE								DRAWING NO.				REV.	
	BOLT & WASHER FOR SUSPENSION TUBE (TM4303BY/DY)								4 439 31 80 003				04	
								SHT. No.		01		NO. OF SHT.		01

WL 3-1-1

TRACTION MACHINES DIVISIONAL STANDARDS

C450056

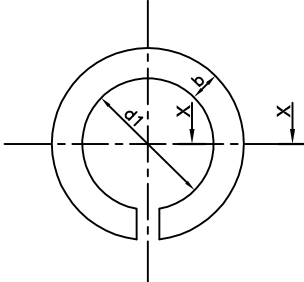
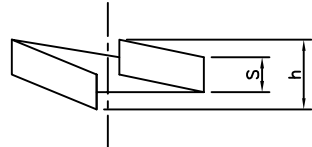
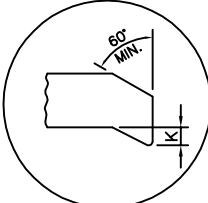
1333186/2023/HEP-TAM21300

SPRING WASHERS

WL 3-1-1

5/127

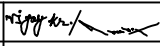
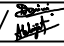
NOTES:-
1. MATERIAL TO BP10570.
2. HARDNESS OF FINISHED SPRING WASHER TO BE 438-480 HV.
3. WASHERS SHALL BE TESTED TO IS:3063.
4. ALTERNATIVELY WASHER CAN BE SUPPLIED AS PER AA7164001.



SECTION 'XX'

TABLE OF DIMENSIONS

ITEM NO.	NOMINAL SIZE	d ₁	b	s	h	r	k	ST. NOS.	REMARKS
1	M6	6.1	2.5±.15	2.5±.15	5	0.5	0.2	459528	
2	M8	8.2	3±.2	2.5±.15	5.5	0.8	0.3	459529	
3	M10	10.2	3.5±.2	3±.2	6.5	0.8	0.3	460056	
4	M12	12.2	5±.2	3.5±.2	7.5	1.2	0.4	456182	
5	M16	16.2	5±.2	5±.2	10.5	1.2	0.4	456183	
6	M20	20.2	6±.2	6±.2	13	1.2	0.4	460057	
7	M24	24.5	8±.3	6±.2	13	2	0.5	452193	
8	M30	30.5	8±.3	6±.2	15	2	0.8	452194	
9	M36	36.5	10±.3	8±.3	17	2	0.8	452195	

8	DRAWING DIGITIZED & UPDATED.	 -17.03.15	REV. 9	NOTE-4 ADDED.	A.JHARIA /  -18.05.18	
7	NOTE 3 MODIFIED.	-SD-28.03.99				
6	NOTES 1 & 2 WERE NOT ON. NOTE 3 WAS NOTE 2.					
5	NOTE 1 MODIFIED. TOLERANCES ON 'b' & 's' WERE NOT ON.	-SD-/25.03.94				
4	DRAWING REDRAWN	-SD-				

ISSUED -SD-

ISSUED BY
TRACTION MACHINES D.O.

BHARAT HEAVY ELECTRICALS LTD.
BHOPAL

APPD. -SD-

TME 001
R&D D STD. ENGG. 001
TXM 003
TNX 001

SCALE
NTS

DRG NO.
C450056

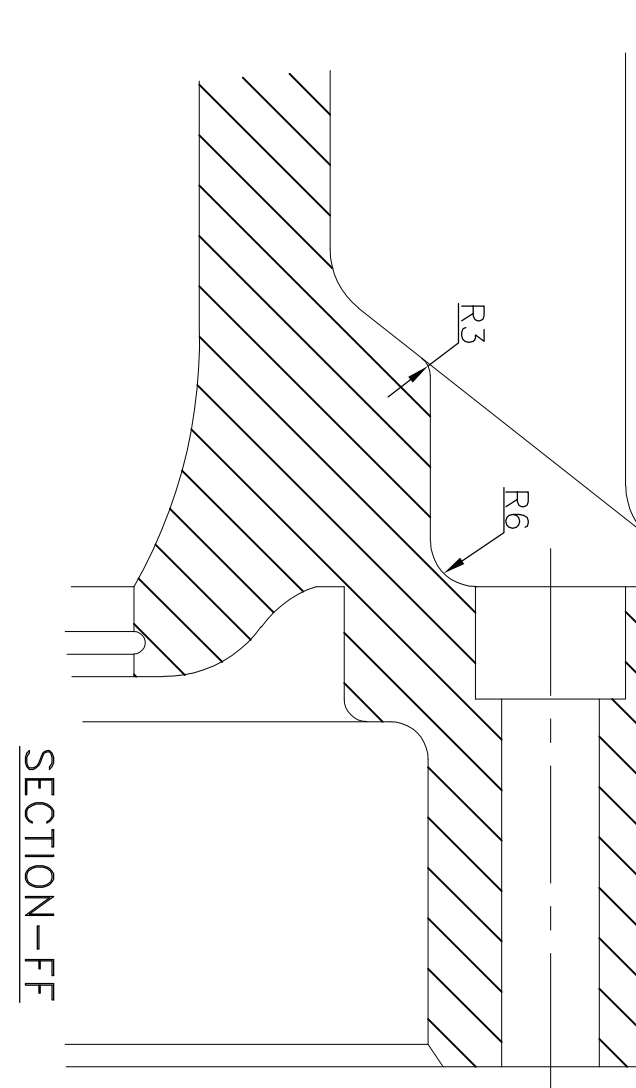
REV. NO.
09

REVISIONS

Technical drawing of a mechanical part, likely a wheel hub or flange, showing a cross-section with dimensions and tolerances. The drawing includes a main view, a circular detail view, and a section view labeled "SECTION-CC".

Dimensions and Tolerances:

- Overall width: 731
- Overall height: 184
- Central bore diameter: $\varnothing 350(\text{MAX.})$
- Flange outer diameter: $\varnothing 217$
- Flange thickness: 15
- Flange inner diameter: $\varnothing 199.3 \pm 0.10$
- Flange hole diameter: $\varnothing 200.95 \pm 0.23$
- Flange hole position: 16 ± 0.13
- Flange hole diameter: $\varnothing 257 \pm 0.05$
- Flange hole position: 16 ± 0.13
- Flange hole diameter: $\varnothing 340 \pm 0.05$
- Flange hole position: 16 ± 0.13
- Flange hole diameter: $\varnothing 355 \pm 0.05$
- Flange hole position: 16 ± 0.13
- Flange hole diameter: $\varnothing 365$ (CASTING FOR REF.)
- Flange hole position: 16 ± 0.13
- Flange hole diameter: $\varnothing 377.0 \pm 0.6$
- Flange hole position: 16 ± 0.13
- Flange hole diameter: $\varnothing 385 \pm 0.05$
- Flange hole position: 16 ± 0.13
- Flange hole diameter: $\varnothing 392.3 \pm 0.5$
- Flange hole position: 16 ± 0.13
- Flange hole diameter: $\varnothing 400 \pm 0.05$
- Flange hole position: 16 ± 0.13
- Flange hole diameter: $\varnothing 407.7 \pm 0.05$
- Flange hole position: 16 ± 0.13
- Flange hole diameter: $\varnothing 415.4 \pm 0.05$
- Flange hole position: 16 ± 0.13
- Flange hole diameter: $\varnothing 423.1 \pm 0.05$
- Flange hole position: 16 ± 0.13
- Flange hole diameter: $\varnothing 430.8 \pm 0.05$
- Flange hole position: 16 ± 0.13
- Flange hole diameter: $\varnothing 438.5 \pm 0.05$
- Flange hole position: 16 ± 0.13
- Flange hole diameter: $\varnothing 446.2 \pm 0.05$
- Flange hole position: 16 ± 0.13
- Flange hole diameter: $\varnothing 453.9 \pm 0.05$
- Flange hole position: 16 ± 0.13
- Flange hole diameter: $\varnothing 461.6 \pm 0.05$
- Flange hole position: 16 ± 0.13
- Flange hole diameter: $\varnothing 469.3 \pm 0.05$
- Flange hole position: 16 ± 0.13
- Flange hole diameter: $\varnothing 477.0 \pm 0.05$
- Flange hole position: 16 ± 0.13
- Flange hole diameter: $\varnothing 484.7 \pm 0.05$
- Flange hole position: 16 ± 0.13
- Flange hole diameter: $\varnothing 492.4 \pm 0.05$
- Flange hole position: 16 ± 0.13
- Flange hole diameter: $\varnothing 500.1 \pm 0.05$
- Flange hole position: 16 ± 0.13
- Flange hole diameter: $\varnothing 507.8 \pm 0.05$
- Flange hole position: 16 ± 0.13
- Flange hole diameter: $\varnothing 515.5 \pm 0.05$
- Flange hole position: 16 ± 0.13
- Flange hole diameter: $\varnothing 523.2 \pm 0.05$
- Flange hole position: 16 ± 0.13
- Flange hole diameter: $\varnothing 530.9 \pm 0.05$
- Flange hole position: 16 ± 0.13
- Flange hole diameter: $\varnothing 538.6 \pm 0.05$
- Flange hole position: 16 ± 0.13
- Flange hole diameter: $\varnothing 546.3 \pm 0.05$
- Flange hole position: 16 ± 0.13
- Flange hole diameter: $\varnothing 554.0 \pm 0.05$
- Flange hole position: 16 ± 0.13
- Flange hole diameter: $\varnothing 561.7 \pm 0.05$
- Flange hole position: 16 ± 0.13
- Flange hole diameter: $\varnothing 569.4 \pm 0.05$
- Flange hole position: 16 ± 0.13
- Flange hole diameter: $\varnothing 577.1 \pm 0.05$
- Flange hole position: 16 ± 0.13
- Flange hole diameter: $\varnothing 584.8 \pm 0.05$
- Flange hole position: 16 ± 0.13
- Flange hole diameter: $\varnothing 592.5 \pm 0.05$
- Flange hole position: 16 ± 0.13
- Flange hole diameter: $\varnothing 600.2 \pm 0.05$
- Flange hole position: 16 ± 0.13
- Flange hole diameter: $\varnothing 607.9 \pm 0.05$
- Flange hole position: 16 ± 0.13
- Flange hole diameter: $\varnothing 615.6 \pm 0.05$
- Flange hole position: 16 ± 0.13
- Flange hole diameter: $\varnothing 623.3 \pm 0.05$
- Flange hole position: 16 ± 0.13
- Flange hole diameter: $\varnothing 631.0 \pm 0.05$
- Flange hole position: 16 ± 0.13
- Flange hole diameter: $\varnothing 638.7 \pm 0.05$
- Flange hole position: 16 ± 0.13
- Flange hole diameter: $\varnothing 646.4 \pm 0.05$
- Flange hole position: 16 ± 0.13
- Flange hole diameter: $\varnothing 654.1 \pm 0.05$
- Flange hole position: 16 ± 0.13
- Flange hole diameter: $\varnothing 661.8 \pm 0.05$
- Flange hole position: 16 ± 0.13
- Flange hole diameter: $\varnothing 669.5 \pm 0.05$
- Flange hole position: 16 ± 0.13
- Flange hole diameter: $\varnothing 677.2 \pm 0.05$
- Flange hole position: 16 ± 0.13
- Flange hole diameter: $\varnothing 684.9 \pm 0.05$
- Flange hole position: 16 ± 0.13
- Flange hole diameter: $\varnothing 692.6 \pm 0.05$
- Flange hole position: 16 ± 0.13
- Flange hole diameter: $\varnothing 700.3 \pm 0.05$
- Flange hole position: 16 ± 0.13
- Flange hole diameter: $\varnothing 708.0 \pm 0.05$
- Flange hole position: 16 ± 0.13
- Flange hole diameter: $\varnothing 715.7 \pm 0.05$
- Flange hole position: 16 ± 0.13
- Flange hole diameter: $\varnothing 723.4 \pm 0.05$
- Flange hole position: 16 ± 0.13
- Flange hole diameter: $\varnothing 731.1 \pm 0.05$
- Flange hole position: 16 ± 0.13
- Flange hole diameter: $\varnothing 738.8 \pm 0.05$
- Flange hole position: 16 ± 0.13
- Flange hole diameter: $\varnothing 746.5 \pm 0.05$
- Flange hole position: 16 ± 0.13
- Flange hole diameter: $\varnothing 754.2 \pm 0.05$
- Flange hole position: 16 ± 0.13
- Flange hole diameter: $\varnothing 761.9 \pm 0.05$
- Flange hole position: 16 ± 0.13
- Flange hole diameter: $\varnothing 769.6 \pm 0.05$
- Flange hole position: 16 ± 0.13
- Flange hole diameter: $\varnothing 777.3 \pm 0.05$
- Flange hole position: 16 ± 0.13
- Flange hole diameter: $\varnothing 785.0 \pm 0.05$
- Flange hole position: 16 ± 0.13
- Flange hole diameter: $\varnothing 792.7 \pm 0.05$
- Flange hole position: 16 ± 0.13
- Flange hole diameter: $\varnothing 800.4 \pm 0.05$
- Flange hole position: 16 ± 0.13
- Flange hole diameter: $\varnothing 808.1 \pm 0.05$
- Flange hole position: 16 ± 0.13
- Flange hole diameter: $\varnothing 815.8 \pm 0.05$
- Flange hole position: 16 ± 0.13
- Flange hole diameter: $\varnothing 823.5 \pm 0.05$
- Flange hole position: 16 ± 0.13
- Flange hole diameter: $\varnothing 831.2 \pm 0.05$
- Flange hole position: 16 ± 0.13
- Flange hole diameter: $\varnothing 838.9 \pm 0.05$
- Flange hole position: 16 ± 0.13
- Flange hole diameter: $\varnothing 846.6 \pm 0.05$
- Flange hole position: 16 ± 0.13
- Flange hole diameter: $\varnothing 854.3 \pm 0.05$
- Flange hole position: 16 ± 0.13
- Flange hole diameter:

[illegible][illegible]

1

12 INCLUDING STOCK
FOR ADJUSTMENT

A) SCOPE OF SUPPLIER:

LIER:

- B) AT SITE:

- ## STYLE LIST

STYLE NO. | BP9404800554



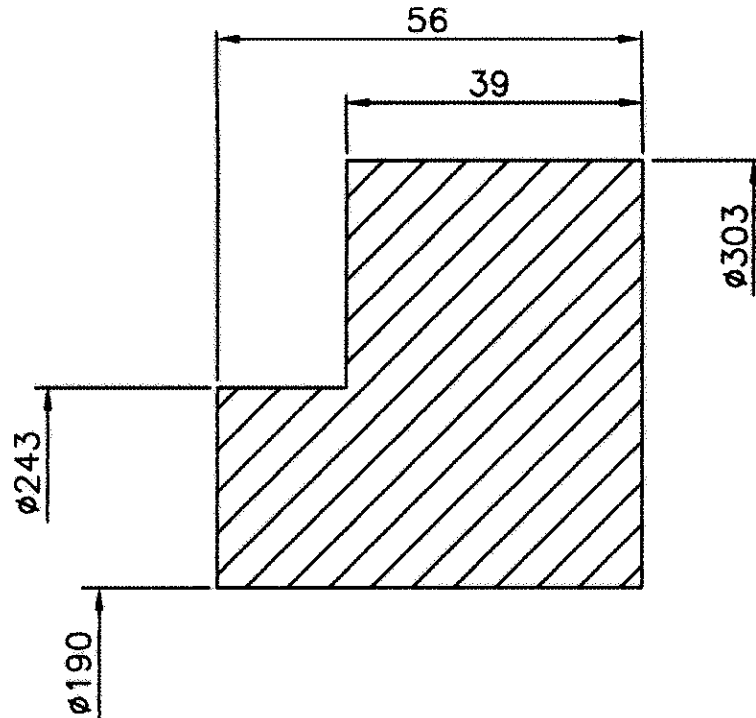
VIEW-X

THE INFORMATION ON THIS DOCUMENT IS THE PROPERTY OF BHARAT HEAVY ELECTRICALS LIMITED.
IT MUST NOT BE USED DIRECTLY OR INDIRECTLY IN ANY WAY DETRIMENTAL TO THE INTEREST OF THE COMPANY.

233186/2023/HER/TAM21300

THE INFORMATION ON THIS DOCUMENT IS THE PROPERTY OF BHARAT HEAVY ELECTRICALS LIMITED
IT MUST NOT BE USED DIRECTLY OR INDIRECTLY IN ANY WAY DETRIMENTAL TO THE INTEREST OF THE COMPANY

REV.	DATE	ALTERED F	ADDITIONAL INFORMATION
01	25.02.09	CHECKED TX	
		APPROVED	
DRG. UPDATED & DIGITIZED.			STATUS OF DRAWING
			DISTRIBUTION TME-1 TXM-4 OF PRINTS TNX-1

**NOTES:-**

- 1 MATERIAL OF IT.001 TO BE AA19333 EXCEPT FOR THE MECHANICAL PROPERTIES WHICH SHALL CONFORM TO IS 2004 CLASS 4 TABLE 2
2. MACHINE ALL OVER TOL ± 0.5 ON ALL DIMS.
3. ALL CORNERS RADII SHALL BE $0.5^{+0}_{-0.3}$
4. SAMPLE $\phi 25 \times 600$ LONG AS PER 11.2 OF AA19333 TO BE SUPPLIED FOR TESTING.

65	75	25	27	28	58	59	48	54	55	56	68	71
REMARKS		ITEM NO.	DESCRIPTION			STD	MATERIAL CODE		A	C	UNIT	UNIT WT. KG.
28 ——— CARD TYPE-3		28 ——— CARD TYPE-1			28 ——— CARD TYPE-2		MATERIAL SPEC.				UNIT	QTY.
		001	ABUTMENT PIECE (FORGING)				AA19333					14.4

BHARAT HEAVY ELECTRICALS LTD.
BHOPAL

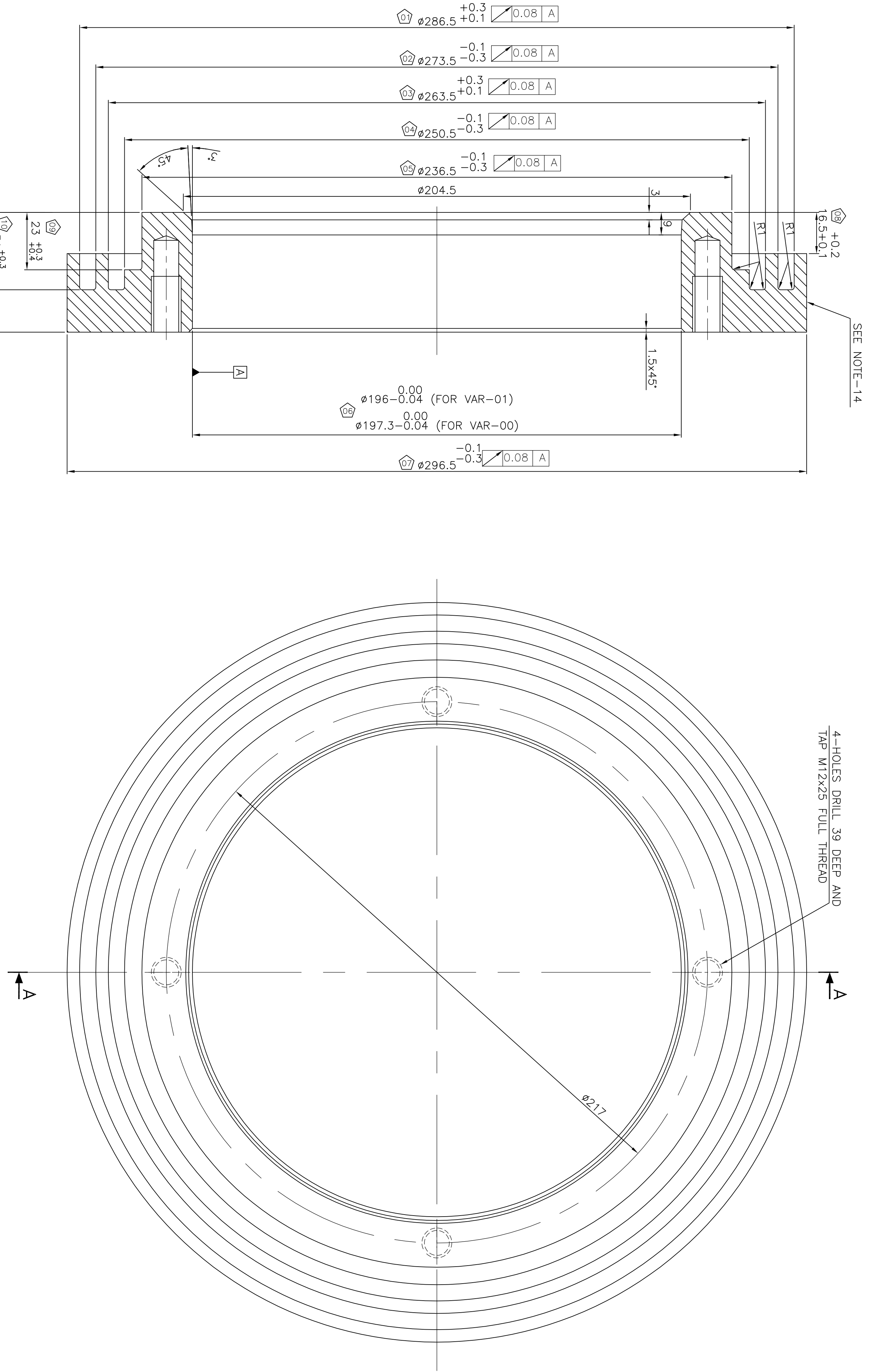
	NAME	SIGN	DATE	NO. OF VAR.
DRN	SANTOSH	-Sd-	15.01.05	
CHK	D.K.	-Sd-	15.01.05	-
APPD	N.SINGH	-Sd-	17.01.05	-

DEPT TME	UNIT/DIMS. GR.		SCALE	WEIGHT (K.G.)	REF. TO ASSY. DRG.	ITEM NO.	NO. OF ITEM
CODE 405	M AA0230208		NTS	14.4	14451575004	001	001
TITLE ABUTMENT PIECE ROUGH M/C (FORGING) DMKT 53/42, TM 4303 BY/DY					DRAWING NO. 44451575004		REV. 01
					SHT. No. 01		NO. OF SHT. 01

FIRST ANGLE PROJECTION

(ALL DIMENSIONS ARE IN mm)

00051575001 ON GRD



- NOTES:-**
- MATERIAL OF IT-002 TO BE TO AA1933 EXCEPT FOR THE MACHINE GAUT PROPERTIES WHICH SHALL CONFORM TO IS 2004 CLASS 4. TABLE 2.
 - REMOVE ALL SHARP CORNERS.
 - GENERAL ARRANGEMENT DRG- NO-04391566003
 - ALL UNTOLERATED DIMENSIONS TO BE ±0.25
 - ALL UNTOLERATED ANGLES TO BE ±6.30
 - MACHINE ALL OVER.
 - SAMPLE Ø25x600 LONG AS PER 1:2 OF AA19333 TO BE SUPPLIED FOR TESTING IT-002.
 - VAR 00 FOR DMKT 53/42, TM3701BY/BX AND VAR01 FOR TM4303BY.
 - ACTUAL WEIGHT OF ITEM/COMPONENT MAY BE WITHIN ±10% OF INDICATED WEIGHT.
 - FOR M3601 NEW DRG.NO.24451503004 REV.00 HAS BEEN PREPARED AS PER REQUIREMENT OF RD50 TO MENTION CONTRACT NO. HENCE FORTH FOR M3601 DRG. NO. 24451503004 REV.00 SHALL BE FOLLOWED IN PLACE OF THIS
 - OTHER IN ALL TECHNICAL ASPECTS.
 - TEMPORARY RUST PREVENTIVE (TRP) TO BE APPLIED ALL OVER AS PER AA55152.
 - QUALITY CHECKING OF ABUTMENT PIECE TO BE DONE AS PER TM12545 (LATEST REVISION).
 - ALL 10 NOS. "C" MARKED DIMENSIONS ARE CRITICAL TO QUALITY (CTQ) & S.L.NO. OF CTQ DIMENSIONS ARE INSCRIBED IN 9/10.
 - IDENTIFICATION MARKING OF ABUTMENT PIECE TO BE DONE AS PER TM12548 AT THE LOCATION SHOWN.

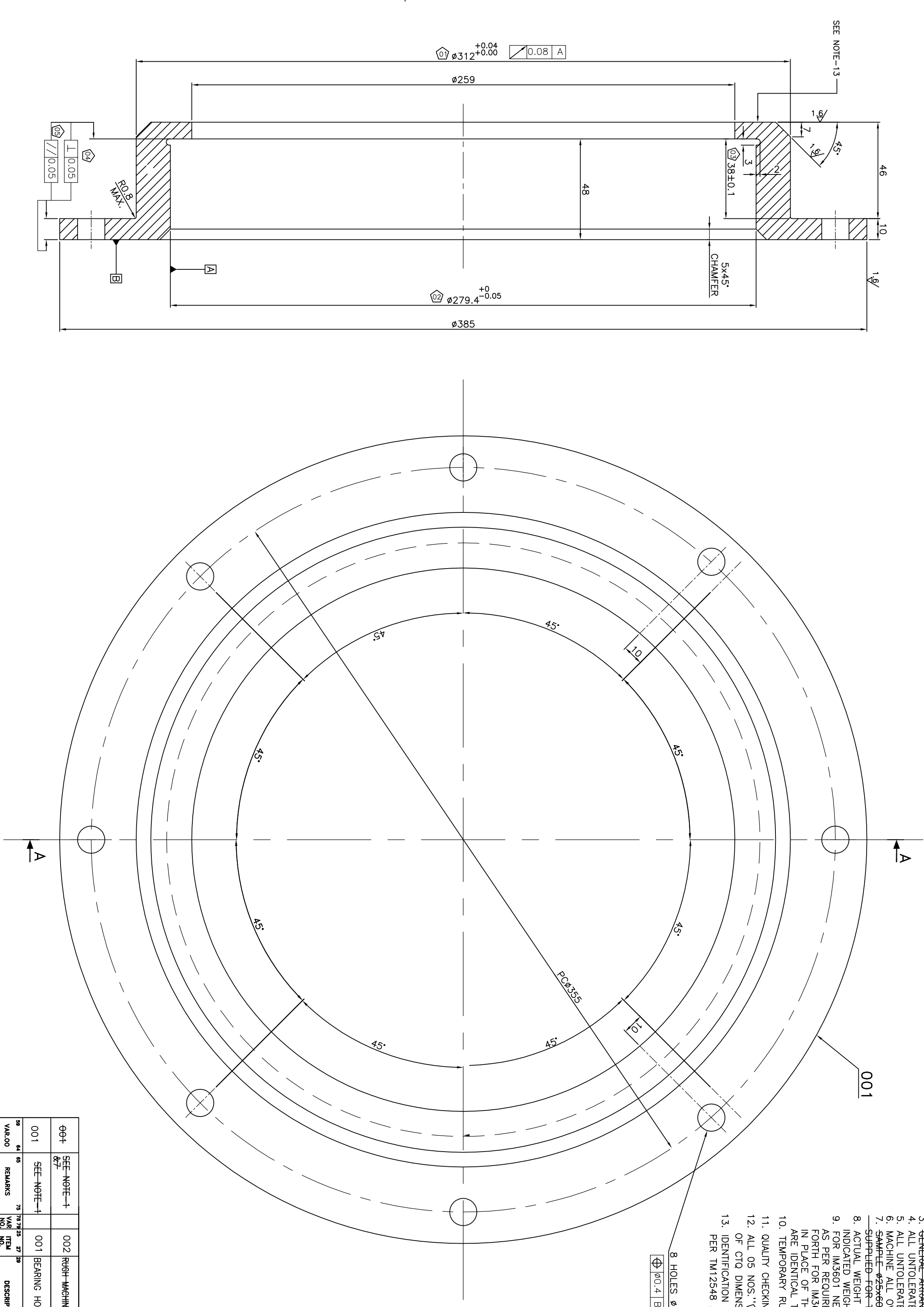
STYLE NO	
DESCRIPTION	SIT. NO.
ABUTMENT PIECE M/CD	BP9084800931
ABUTMENT PIECE FULLY FINISH	BP9094801617

TOOL LIST		
IT.NO.	TOOL NO.	DESCRIPTION
001	14571399	DEPTH GAUGE 36+0.3/-0.4
001	14571391	STEP GAUGE 21.5+0.2/-0.1
001	15789332	CALLIPER GAUGE 296.5-0.1/-0.3
001	15789333	CALLIPER GAUGE 236.5-0.1/-0.3
001	15789334	CALLIPER GAUGE 273.5-0.1/-0.3
001	15789335	CALLIPER GAUGE 250.5-0.1/-0.3
001	15789336	GROOVE GAUGE 6.5x14.5 DEEP
001	15789337	PIN GAUGE (S/F) 197.0/196.9
001	15789338	PIN GAUGE 197.3+0-0.043
001	15789339	OFF SET PIN GAUGE 286.5+0.3/+0.1
001	15789440	OFF SET PIN GAUGE 263.5+0.3/+0.1
001	15789441	DRILL JIG FOR ALL HOLES
001	15789442	GRINDING SPIGOT TO SUIT
001	1579065	STEP GAUGE 16.5+0.1 ^{+0.2}
001	1579066	STEP GAUGE 16.5+0.3 ^{+0.3}
001	15791657	PIN GAUGE 196+0-0.043
001	1574647	PIN GAUGE (S/F) 195.6/195.65
001	1574648	DRILL JIG FOR ALL HOLES

SECTION-AA

THE INFORMATION ON THIS DOCUMENT IS THE PROPERTY OF BHARAT HEAVY ELECTRICALS LIMITED. IT MUST NOT BE USED DIRECTLY OR INDIRECTLY IN ANY WAY DETRIMENTAL TO THE INTEREST OF THE COMPANY.											
INVENTORY NO.		SIGN. & DATE		REF. DRG. NO.							
H		G		F		E		D		C	
1		2		3		4		5		6	
7		8		9		10		11		12	
A		B		C		D		E		F	
1		2		3		4		5		6	
7		8		9		10		11		12	
A		B		C		D		E		F	
1		2		3		4		5		6	
7		8		9		10		11		12	
A		B		C		D		E		F	
1		2		3		4		5		6	
7		8		9		10		11		12	
A		B		C		D		E		F	
1		2		3		4		5		6	
7		8		9		10		11		12	
A		B		C		D		E		F	
1		2		3		4		5		6	
7		8		9		10		11		12	
A		B		C		D		E		F	
1		2		3		4		5		6	
7		8		9		10		11		12	
A		B		C		D		E		F	
1		2		3		4		5		6	
7		8		9		10		11		12	
A		B		C		D		E		F	
1		2		3		4		5		6	
7		8		9		10		11		12	
A		B		C		D		E		F	
1		2		3		4		5		6	
7		8		9		10		11		12	
A		B		C		D		E		F	
1		2		3		4		5		6	
7		8		9		10		11		12	
A		B		C		D		E		F	
1		2		3		4		5		6	
7		8		9		10		11		12	
A		B		C		D		E		F	
1		2		3		4		5		6	
7		8		9		10		11		12	
A		B		C		D		E		F	
1		2		3		4		5		6	
7		8		9		10		11		12	
A		B		C		D		E		F	
1		2		3		4		5		6	
7		8		9		10		11		12	
A		B		C		D		E		F	
1		2		3		4		5		6	
7		8		9		10		11		12	
A		B		C		D		E		F	
1		2		3		4		5		6	
7		8		9		10		11		12	
A		B		C		D		E		F	
1		2		3		4		5		6	
7		8		9		10		11		12	
A		B		C		D		E		F	
1		2		3		4		5		6	
7		8		9		10		11		12	
A		B		C		D		E		F	
1		2		3		4		5		6	
7		8		9		10		11		12	
A		B		C		D		E		F	
1		2		3		4		5		6	
7		8		9		10		11		12	
A		B		C		D		E		F	
1		2		3		4		5		6	
7		8		9		10		11		12	
A		B		C		D		E		F	
1		2		3		4		5		6	
7		8		9		10		11		12	
A		B		C		D		E		F	
1		2		3		4		5		6	
7		8		9		10		11		12	
A		B		C		D		E		F	
1		2		3		4		5		6	
7		8		9		10		11		12	
A		B		C		D		E		F	
1		2		3		4		5		6	
7		8		9		10		11		12	
A		B		C		D		E		F	
1		2		3		4		5		6	
7		8		9		10		11		12	
A		B		C		D		E		F	
1		2		3		4		5		6	
7		8		9		10		11		12	
A		B		C		D		E		F	
1		2		3		4		5		6	
7		8		9		10		11		12	
A		B		C		D		E		F	
1		2		3		4		5		6	
7		8		9		10		11		12	
A		B		C		D		E		F	
1		2		3		4		5		6	
7		8		9		10		11		12	
A		B		C		D		E		F	
1		2		3		4		5		6	
7		8		9		10		11		12	
A		B		C		D		E		F	
1		2		3		4		5		6	
7		8		9		10		11		12	
A		B		C		D		E		F	
1		2		3		4		5		6	
7		8		9		10		11		12	
A		B		C		D		E		F	
1		2		3		4		5		6	
7		8		9		10		11		12	
A		B		C		D		E		F	
1		2		3		4		5		6	
7		8		9		10		11		12	
A		B		C		D		E		F	
1		2		3		4		5		6	
7		8		9		10		11		12	
A		B		C		D		E		F	
1		2		3		4		5		6	
7		8		9		10		11		12	
A		B		C		D		E		F	
1		2		3		4		5		6	
7		8		9		10		11		12	
A		B		C		D		E		F	
1		2		3		4		5		6	
7		8		9		10		11		12	
A		B		C		D		E		F	
1		2		3		4		5		6	
7		8		9		10		11		12	
A		B		C		D		E		F	
1		2		3		4		5		6	
7		8		9		10		11		12	
A		B		C		D		E		F	
1		2		3		4		5		6	
7		8		9		10		11		12	
A		B		C		D		E		F	
1		2		3		4		5		6	
7		8		9		10		11		12	
A		B		C		D		E		F	
1		2		3		4		5		6	
7		8		9		10		11		12	
A		B		C		D		E		F	
1		2		3		4		5		6	
7		8		9		10		11		12	
A		B		C		D		E		F	
1		2		3		4		5		6	
7		8		9		10		11		12	
A		B		C		D		E		F	
1		2		3		4		5		6	
7		8		9		10		11		12	
A		B		C		D		E		F	
1		2		3		4		5		6	
7		8		9		10		11		12	
A		B		C		D		E		F	
1		2		3		4		5		6	
7		8		9		10		11		12	
A		B		C		D		E		F	
1		2		3		4		5		6	
7		8		9		10		11		12	
A		B		C		D		E		F	
1		2		3		4		5		6	
7		8		9		10		11		12	
A		B		C		D		E		F	
1		2		3		4		5		6	
7		8		9		10		11		12	
A		B		C		D		E		F	
1		2		3		4		5		6	
7		8		9		10		11		12	
A		B		C		D		E		F	
1		2		3		4		5		6	
7		8		9		10		11		12	
A		B		C		D		E		F	
1		2		3		4		5		6	
7		8		9		10		11		12	
A		B		C		D		E		F	
1		2		3		4		5		6	
7		8		9		10		11		12	
A		B		C		D		E		F	
1		2		3		4		5		6	
7		8		9		10		11		12	
A		B		C		D		E		F	
1		2		3		4		5		6	
7		8		9		10		11		12	
A		B		C		D		E		F	
1		2		3		4		5		6	
7		8		9		10		11		12	
A		B		C		D		E		F	
1		2		3		4		5		6	
7		8		9		10		11		12	
A		B		C		D		E		F	
1		2		3		4		5		6	
7		8		9		10		11		12	
A		B		C		D		E		F	
1		2		3		4		5		6	
7		8		9		10		11		12	
A		B		C		D		E		F	
1		2		3		4		5		6	
7		8		9		10		11		12	
A		B		C		D		E		F	
1		2		3		4		5		6	
7		8		9		10		11		12	
A		B		C		D		E		F	
1		2		3		4		5		6	
7		8		9		10		11		12	
A		B		C		D		E		F	
1		2		3		4		5		6	
7		8		9		10		11		12	
A		B		C		D		E		F	
1		2		3		4		5		6	
7		8		9		10		11		12	
A		B		C		D		E		F	
1		2		3		4		5		6	
7		8		9		10		11		12	
A		B		C		D		E		F	

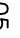

THE INFORMATION ON THIS DOCUMENT IS THE PROPERTY OF BHARAT HEAVY ELECTRICALS LIMITED.
IT MUST NOT BE USED DIRECTLY OR INDIRECTLY IN ANY WAY DETRIMENTAL TO THE INTEREST OF THE COMPANY.

[illegible]

STYLE NO	
DESCRIPTION	ST. NO.
BEARING HOUSING M/CD.	BP9084800915

TOOL LIST		
IT.NO.	TOOL NO.	DESCRIPTION
	15/78954	PIN GAUGE (S/F) 279.00/279.05
	15/78955	PIN GAUGE 259.00
	15/78956	PIN GAUGE 279.4 ⁺⁰ _{-0.05}
	15/78957	CALIPER GAUGE 38±0.1 ^{+0.036} _{-0.054}
	15/78958	LENGTH GAUGE 38±0.1
	15/78959	(FOT CHUCK TO SITTING GAUGE)
	15/78960	GRINDING FIXTURE
	15/78961	DRILL JIG FOR ALL HOLES
15/79221		TEMPLATE FOR CHECKING POD & ANGULAR LOCATION OF Ø13 HOLES

NOTES:-

1. MATERIAL OF 1602 TO BE TO AA1933 EXCEPT FOR THE MAGNETICAL PROPERTIES WHICH SHALL CONFORM TO IS-2004 CLASS 4, TABLE 2.
2. REMOVE ALL SHARP CORNERS.
3. GENERAL ARRANGEMENT DRG. NO. 042915660093
4. ALL UNTOLERATED DIMENSIONS TO BE ± 0.25
5. ALL UNTOLERATED ANGLES TO BE $\pm 6^{\circ} 30'$
6. MACHINE ALL OVER.
7. SAMPLE #25600 LONG AS PER 1+2 OF AA19333 TO BE SUPPLIED FOR TESTING 1+002.
8. ACTUAL WEIGHT OF ITEM/COMPONENT MAY BE WITHIN $\pm 10\%$ OF INDICATED WEIGHT.
9. FOR M3601 NEW DRG.NO.24451503001 REV.00 HAS BEEN PREPARED AS PER REQUIREMENT OF ROSO TO MENTION CONTRACT NO. HENCE FORTH FOR M3601 DRG. NO. 24451503001 REV.00 SHALL BE FOLLOWED IN PLACE OF THIS DRG. NO. 14451575001 AND BOTH THESE DRAWING ARE IDENTICAL TO EACH OTHER IN ALL TECHNICAL ASPECTS.
10. TEMPORARY RUST PREVENTIVE (TRP) TO BE APPLIED ALL OVER AS PER AA55152.
11. QUALITY CHECKING OF BEARING HOUSING TO BE DONE AS PER TM12545 (LATEST REVISION)
12. ALL 05 NOS. OF  MARKED DIMENSIONS ARE CRITICAL TO QUALITY (CTQ) & S.L.NO. OF CTQ DIMENSIONS ARE INSCRIBED IN  e.g. (05).
13. IDENTIFICATION MARKING OF BEARING HOUSING TO BE DONE AS PER PER TM12548 AT THE LOCATION SHOWN.

1233186/2023/HEP-TAM21300

FIRST ANGLE PROJECTION

PRODUCED BY AN AUTODESK EDUCATIONAL PRODUCT

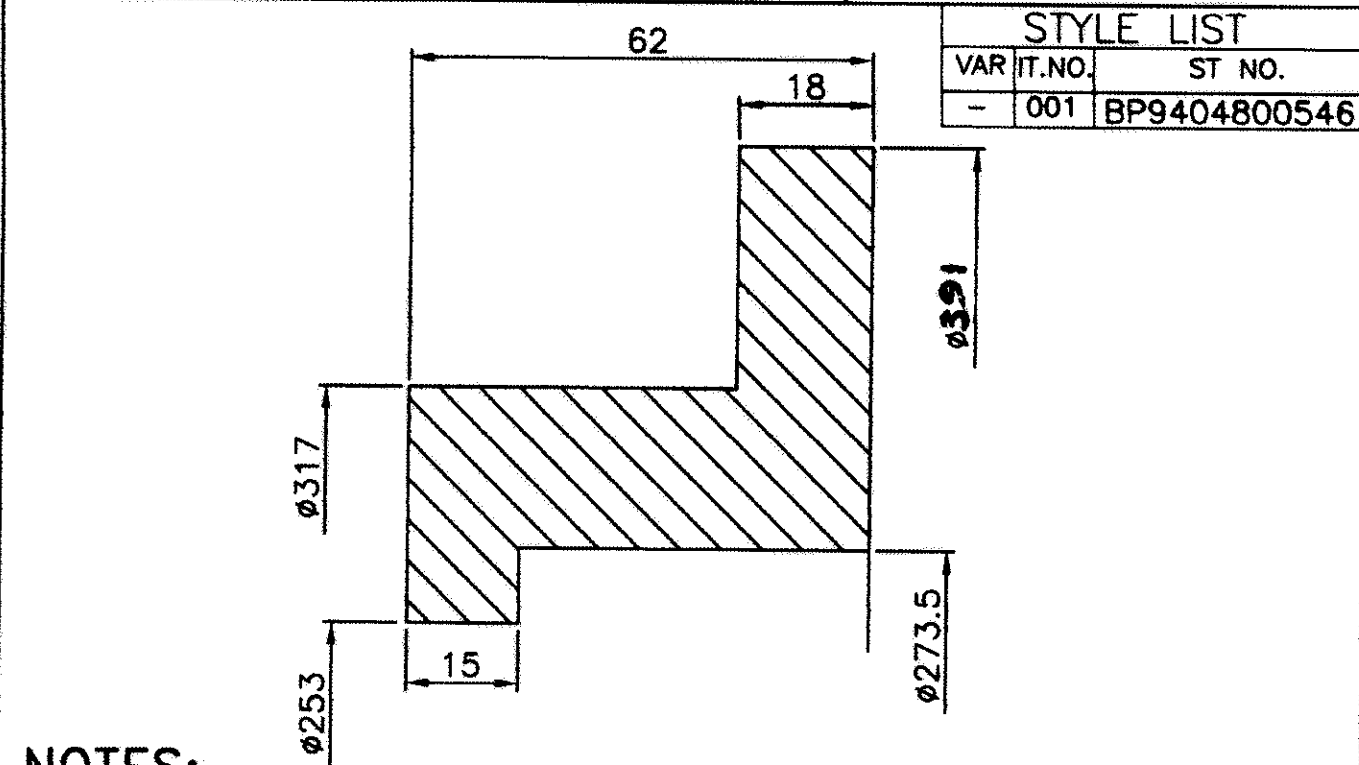
(ALL DIMENSIONS ARE IN mm)

PRODUCED BY AN AUTODESK EDUCATIONAL PRODUCT

PRODUCED BY AN AUTODESK EDUCATIONAL PRODUCT

THE INFORMATION ON THIS DOCUMENT IS THE PROPERTY OF BHARAT HEAVY ELECTRICALS LIMITED
IT MUST NOT BE USED DIRECTLY OR INDIRECTLY IN ANY WAY DETRIMENTAL TO THE INTEREST OF THE COMPANY

REV.	DATE	ALTERED	REV.	DATE	ALTERED F	ADDITIONAL INFORMATION
		CHECKED	01	11.04.09	CHECKED <i>fm</i>	
		APPROVED			APPROVED <i>Cor</i>	
			DRG. UPDATED & DIGITIZED.			STATUS OF DRAWING
						DISTRIBUTION TME-1 TXM-1 OF PRINTS TNX-1

**NOTES:-**

- 1 MATERIAL OF IT.001 TO BE AA19333 EXCEPT FOR THE MECHANICAL PROPERTIES WHICH SHALL CONFORM TO IS 2004 CLASS-4 TABLE 2
2. MACHINE ALL OVER TOL ± 0.5 ON ALL DIMS.
3. ALL CORNERS RADII SHALL BE 0.5 ± 0.3
4. SAMPLE $\phi 25 \times 600$ LONG AS PER 11.2 OF AA19333 TO BE SUPPLIED FOR TESTING.

001	BRG HOUSING (FORGING)	AA19333	16.525
REMARKS	ITEM NO.	DESCRIPTION	STD
		MATL CODE	54 55 56 58 71
		MATL SPCN.	UNIT
28	CARD TYPE-3	28	CARD TYPE-1
28	CARD TYPE-2	28	CARD TYPE-2

BHARAT HEAVY ELECTRICALS LTD.
BHOPAL

NAME	SIGN	DATE	NO. OF
SANTOSH	-Sd-	15.01.05	
D.K.	-Sd-	15.01.05	-
N.SINGH	-Sd-	17.01.05	

DEPT TME	UNIT/DIMS. OR.	SCALE	WEIGHT (K.G.)	REF. TO ASSY. DRG.	ITEM NO.	NO. OF ITEM
CODE 405		NTS	16.525	14451575001	001	001
TITLE				DRAWING NO.		REV.
BRG. HOUSING ROUGH M/C (FORGING) D.M.K.T.53/42,TM 4303, BY/DY				44451575002		01
				SHT. No. 01	NO. OF SHT. 01	

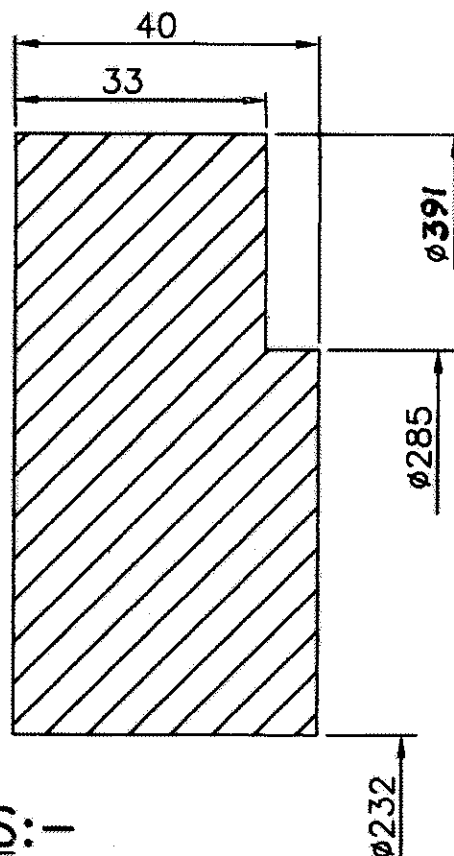
PRODUCED BY AN AUTODESK EDUCATIONAL PRODUCT

233186/2023 HER-TAM 21500

THE INFORMATION ON THIS DOCUMENT IS THE PROPERTY OF BHARAT HEAVY ELECTRICALS LIMITED
IT MUST NOT BE USED DIRECTLY OR INDIRECTLY IN ANY WAY DETRIMENTAL TO THE INTEREST OF THE COMPANY

REV. 02	DATE 25.02.09	ALTERED F	ADDITIONAL INFORMATION
CHECKED	CHECKED	APPROVED	STATUS OF DRAWING
APPROVED	APPROVED		DISTRIBUTION TME-1 TXM-4 OF PRINTS TNX-1



DRG. UPDATED & DIGITIZED.



STYLE LIST		
VAR	IT.NO.	STYLE NO.
-	001	BP9404801429

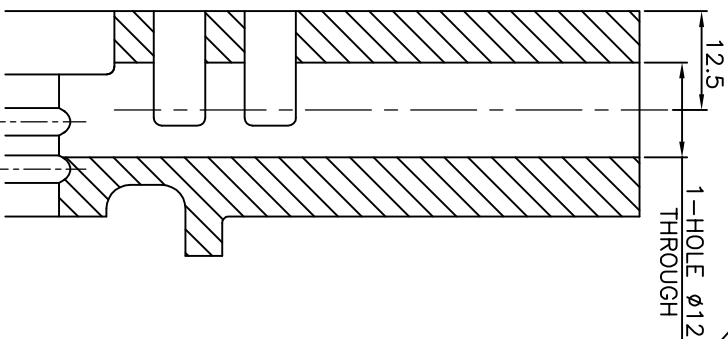
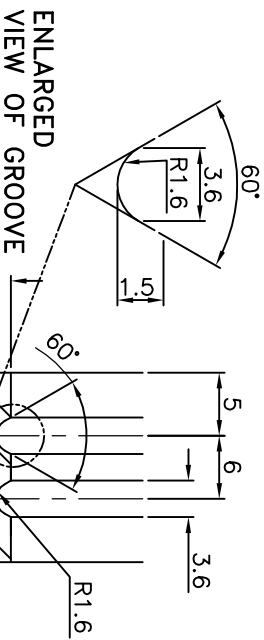
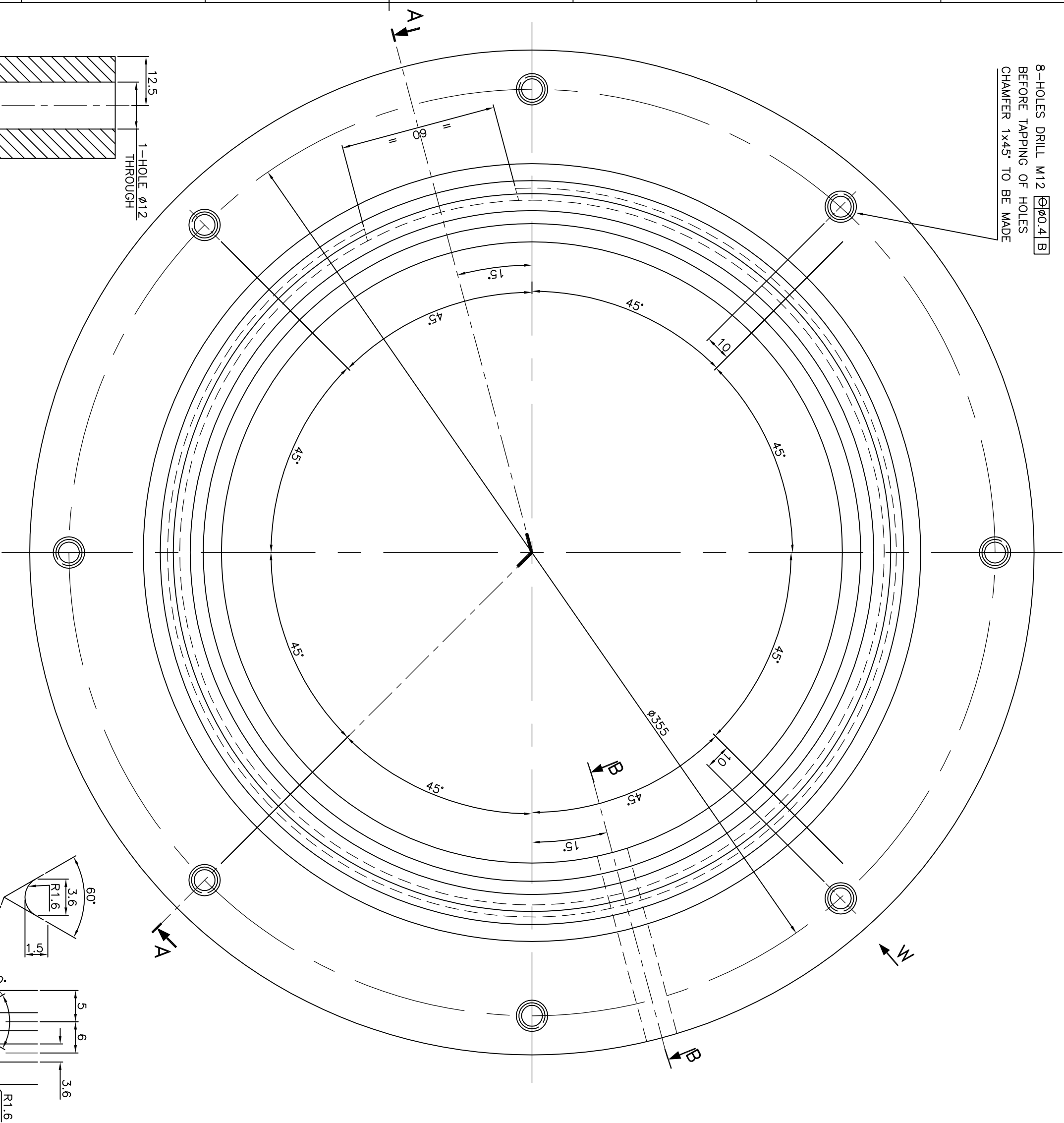
NOTES:-

- 1 MATERIAL OF IT.001 TO BE AA19333 EXCEPT FOR THE MECHANICAL PROPERTIES WHICH SHALL CONFORM TO IS 2004 CLASS 4 TABLE 2
2. MACHINE ALL OVER TOL ± 0.5 ON ALL DIMS.
3. ALL CORNERS RADII SHALL BE $0.5^{+0}_{-0.3}$
4. SAMPLE $\phi 25 \times 600$ LONG AS PER 11.2 OF AA19333 TO BE SUPPLIED FOR TESTING.

REF. DRG. NO.	001		END COVER (RWE) (FORGING)		12.6				
	AA19333								
	MATL. CODE		A/C		UNIT WT. KG.				
	MATL. SPCN.		UNIT		QTY.				
28 → CARD TYPE-3		28 → CARD TYPE-1		28 → CARD TYPE-2					
SIGN. & DATE	 BHARAT HEAVY ELECTRICALS LTD. BHOPAL				NAME	SIGN	DATE	NO. OF VAR.	
					DRN	SANTOSH	-Sd-	15.01.05	-
					CKD	D.K.	-Sd-	15.01.05	
					APPD	N.SINGH	-Sd-	17.01.05	
INVENTORY NO.	DEPT TME	UNTO.DIMS. GR.		SCALE	WEIGHT (K.G.)	REF. TO ASSY. DRG.	ITEM NO.	NO. OF ITEM	
	CODE 405	AA0230208		NTS	12.6	14451575003	001	001	
	TITLE					DRAWING NO.		REV.	
	END COVER ROUGH M/C (FORGING) DMKT 53/42, TM 4303, BY/DY					44451575003		02	
					SHT. No. 01		NO. OF SHT. 01		

30057515471 ON 3RD

8-HOLES DRILL M12 $\varnothing 0.4$ B
BEFORE TAPPING OF HOLES
CHAMFER 1x45° TO BE MADE



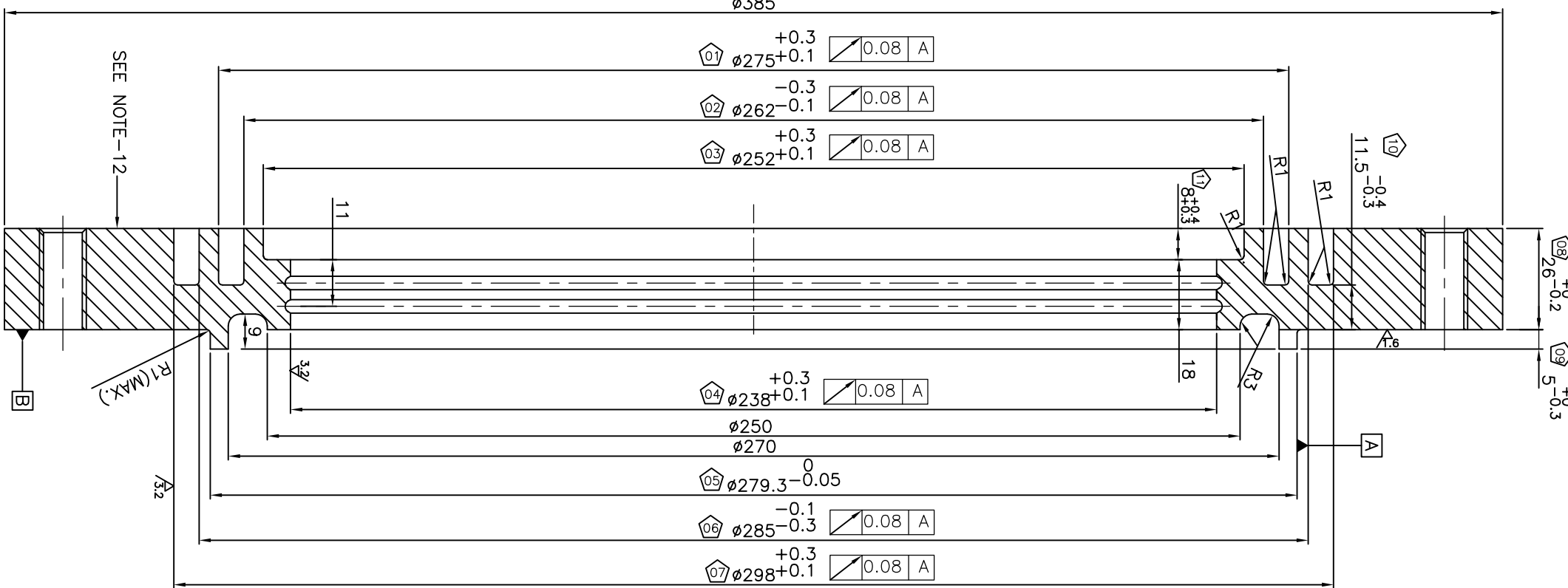
SECTION B-B

VIEW-W

STYLE NO	ST. NO.
DESCRIPTION	
END COVER RWE M/CD	BP9084800923

ANNULAR GROOVE DETAIL

SECTION-AA



TOOL LIST	
IT.NO.	TOOL NO.
001	1414723
001	1578974
001	1578975
001	1578976
001	1578977
001	1578978
001	1578979
001	1578980
001	1578981
001	1578982
001	1578983
001	1578984
001	1578985
001	1578986
001	1578987
001	1579221

NOTES:-

- MATERIAL OF IT-002 TO BE TO AA1933 EXCEPT FOR THE MACHINECAL PROPERTIES WHICH SHALL CONFORM TO IS-2004 CLASS-4, TABLE-2.
- REMOVE ALL SHARP CORNERS.
- GENERAL ARRANGEMENT DRG-NO-04391560903
- ALL UNTOLERATED DIMENSIONS TO BE ± 0.25
- ALL UNTOLERATED ANGLES TO BE $\pm 6:30'$
- MACHINE ALL OVER.
- SAMPLE $\varnothing 25 \times 600$ LONG AS PER 11+2 OF AA19333 TO BE SUPPLIED FOR TESTING IT-002.
- ACTUAL WEIGHT OF ITEM/COMPONENT MAY BE WITHIN $\pm 10\%$ OF INDICATED WEIGHT.
- FOR IM3601 NEW DRG NO.24451503003 REV.00 HAS BEEN PREPARED AS PER REQUIREMENT OF RD50 TO MENTION CONTRACT NO. HENCE FORTH FOR IM3601 DRG. NO. 24451503003 REV.00 SHALL BE FOLLOWED IN PLACE OF THIS DRG. NO. 14451575003 AND BOTH THESE DRAWING ARE IDENTICAL TO EACH OTHER IN ALL TECHNICAL ASPECTS.
- TEMPORARY RUST PREVENTIVE (TRP) TO BE APPLIED ALL OVER AS PER AA55152.
- QUALITY CHECKING OF END COVER (RWE) TO BE DONE AS PER TM12545 (LATEST REVISION).
- ALL 11 NOS."C" MARKED DIMENSIONS ARE CRITICAL TO QUALITY(CTQ) & SL.NO. OF CTQ DIMENSIONS ARE INSCRIBED IN ∇ e.g. $\nabla 11$.
- IDENTIFICATION MARKING OF END COVER (RWE) TO BE DONE AS PER TM12548 AT THE LOCATION SHOWN.

INVENTORY NO. SIGN. & DATE REF. DRG. NO. THE INFORMATION ON THIS DOCUMENT IS THE PROPERTY OF BHARAT HEAVY ELECTRICALS LIMITED. IT MUST NOT BE USED DIRECTLY OR INDIRECTLY IN ANY WAY DETRIMENTAL TO THE INTEREST OF THE COMPANY.

2005/15741.DWG

23

2

3

4

5

6

7

8

9

10

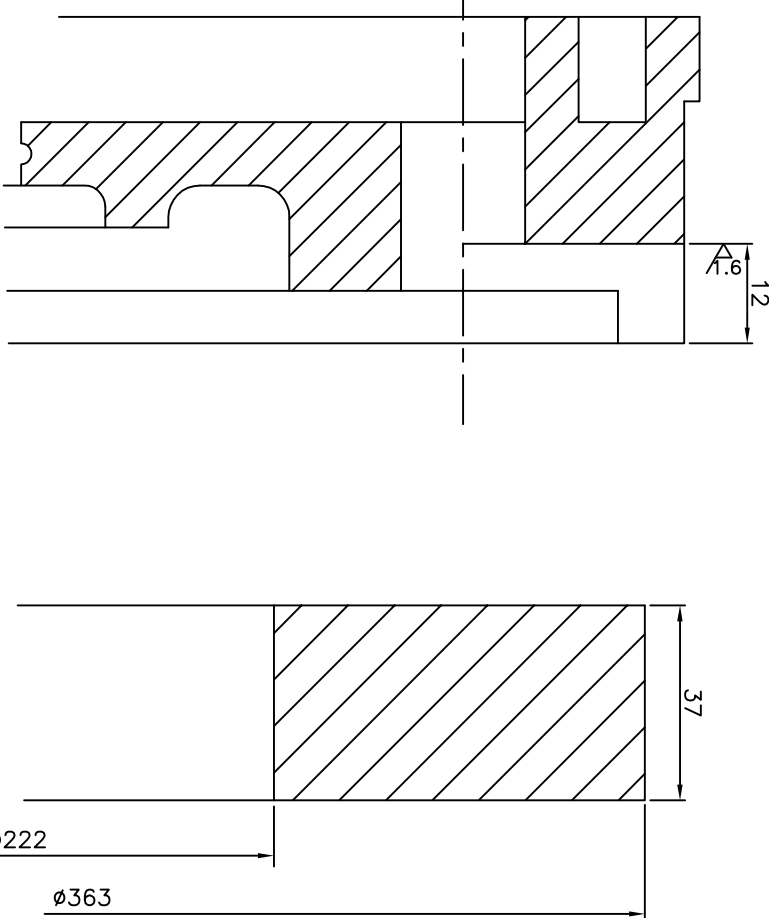
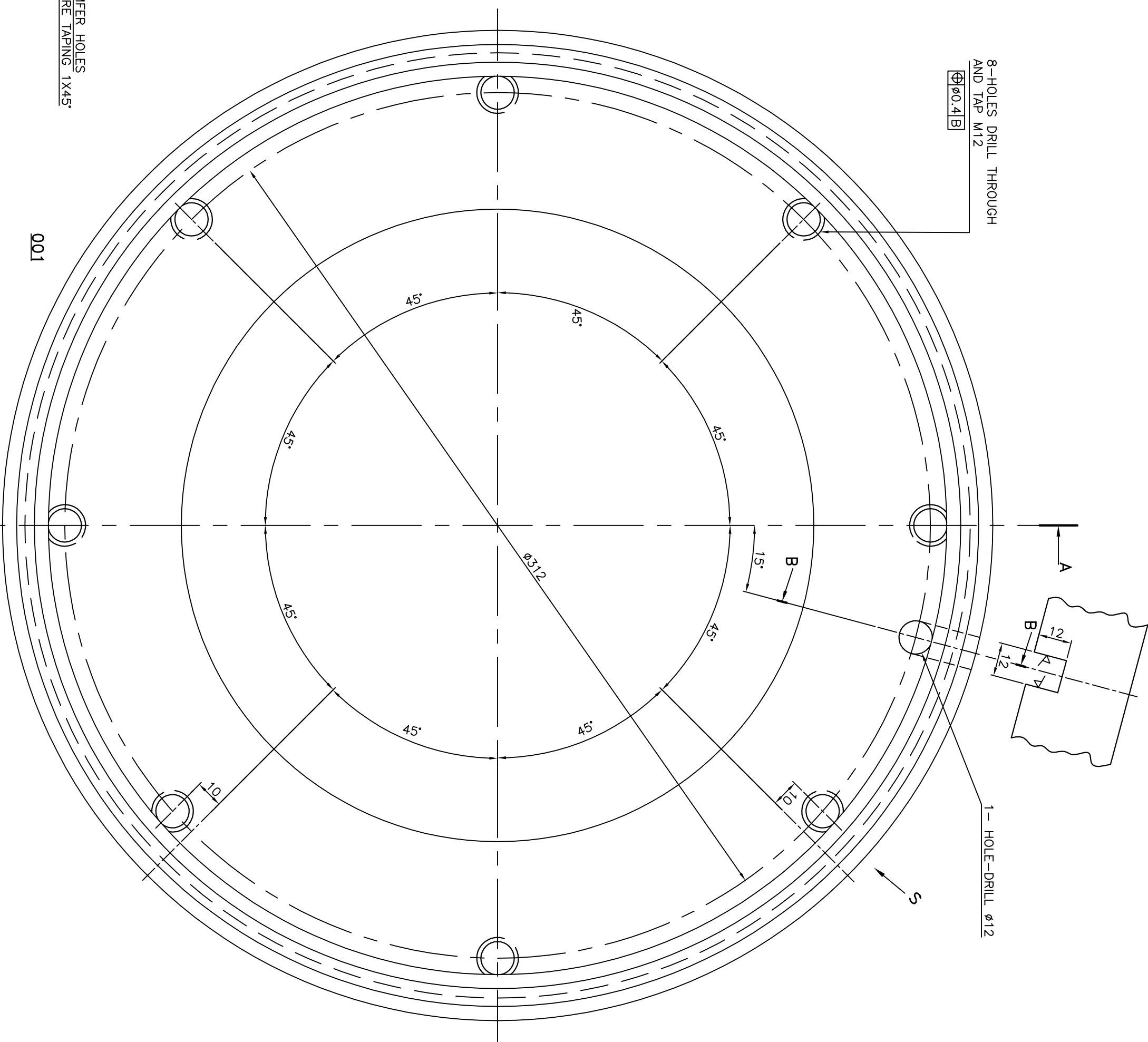
11

12

8-HOLES DRILL M12 $\varnothing 0.4$ B
BEFORE TAPPING OF HOLES
CHAMFER 1x45° TO BE MADE

DRG. NO. 14391580002

THE INFORMATION ON THIS DOCUMENT IS THE PROPERTY OF BHARAT HEAVY ELECTRICALS LIMITED.
IT MUST NOT BE USED DIRECTLY OR INDIRECTLY IN ANY WAY DETRIMENTAL TO THE INTEREST OF THE COMPANY.



TOOL LIST	
IT	TOOL DESCRIPTION
15/78989	CALLIPER GAUGE 356.9-0.1/-0.3
15/78990	LENGTH GAUGE 22 MM
15/78991	GROOVE GAUGE 5X3
15/78992	GROOVE GAUGE 10X6.4
15/78993	CALLIPER GAUGE 333.9 -0.3/-0.1
15/78995	CALLIPER GAUGE 0.354
15/78995	OFF SET PIN GAUGE 340 +0.08 /+0.03
15/78996	LENGTH GAUGE 8.0 -0.3/+0
15/78004	LENGTH GAUGE 7.0 MM
15/78998	SNAP GAUGE 20 MM
15/78999	SNAP GAUGE 16 MM
15/79023	TURNING SPIGOT TO SUIT Ø340
15/79024	DRILL JIG FOR ALL HOLES
15/79000	SNAP GAUGE 30 MM
15/79001	PIN GAUGE 228+0.1/+0.3
15/79007	PIN GAUGE Ø244
15/79003	GROOVE GAUGE 12.5X8 DEEP
15/78988	CALLIPER GAUGE 364 -0.3/0.1
15/79023	TURNING SPIGOT TO SUIT Ø340
15/79024	DRILL JIG FOR ALL HOLES
15/74744	TEMPLATE FOR CHECKING PCD & ANGULAR LOCATION OF M12 HOLES

- NOTES:-
1. MATERIAL OF ITEM 002 TO BE TO AA 19333 EXCEPT FOR THE MECHANICAL PROPERTIES WHICH SHALL CONFORM TO IS 2004 CLASS-4 TABLE-2
 2. REMOVE ALL SHARP CORNERS.
 3. GENERAL-ARRANGEMENT Dwg- NO 04-9415800092- ALL UNTOLERANCED DIMENSIONS TO BE ± 0.25 .
 4. ALL UNTOLERANCED ANGLES TO BE $\pm 0^{\circ}$ $30'$.
 5. MACHINE ALL OVER.
 6. ALL CORNERS RADIUS SHALL BE $0.5 - 0.3$ TO AVOID SHARPNESS EXCEPT WHERE STATED.
 7. SAMPLE 025X600 LONG AS PER 11.2 OF AA 19333 TO BE SUPPLIED FOR TESTING OF IT. 002.
 8. ACTUAL WEIGHT OF ITEM/COMPONENT MAY BE WITHIN $\pm 10\%$ OF INDICATED WEIGHT.
 9. FOR M3601, NEW DRAWING NO. 24451503005 REV.00 HAS BEEN PREPARED AS PER REQUIREMENT OF RSO TO MENTION CONTRACT NO. HENCEFORTH, FOR M3601 DRG. NO.24451503005 REV.00 SHALL BE FOLLOWED IN PLACE OF THIS DRAWING NO. 14391580002 AND BOTH THESE DRAWINGS ARE IDENTICAL TO EACH OTHER IN ALL THE TECHNICAL ASPECTS.
 10. TEMPORARY RUST PREVENTIVE (TRP) TO BE APPLIED ALL OVER AS PER AA55152.
 11. QUALITY CHECKING OF END COVER (GWE) TO BE DONE AS PER TM12545 (LATEST REVISION).
 12. ALL 08 NOS. "◇" MARKED DIMENSIONS ARE CRITICAL TO QUALITY(CTQ) & S.L.NO. 08 CTQ DIMENSIONS ARE INSCRIBED IN ◇ e.g. ⑱.
 13. IDENTIFICATION MARKING OF END COVER (GWE) TO BE DONE AS PER TM12548 AT THE LOCATION SHOWN.



STYLE NO.		
SL.NO.	DESCRIPTION	ST.NO.
	END COVER	BP90947716755
	GEAR WHEEL END	

[illegible]

ADDITIONAL INFORMATION

REV.	DATE	ALTERED	A.J. <i>[Signature]</i>
		CHECKED	A.S. <i>[Signature]</i>
09	24.12.19	APPD.	A.S. <i>[Signature]</i>
ZONE	NOTE-11,12 & 13 ADDED & CTQ DIM MARKED. IN TOOL LIST TOOL NO. 1574744 ADDED.		

STATUS OF DRAWING
DISTRIBUTION OF PRINTS
TME-1 TXM-4 TNX-1


 BHARAT HEAVY ELECTRICALS LTD. BHOPAL	NAME		SIGN	DATE	NO.OF
	DIN			6.09.01	
	N.SINGH		-sd-	6.09.01	
	N.SINGH			6.09.04	01

REV.	DATE	ALTERED	REV.	DATE	ALTERED	REV.	DATE	ALTERED	REV.	DATE	ALTERED	REV.	DATE	ALTERED	REV.	DATE	ALTERED
08	17.02.15	APPD.	07	11.04.13	APPD.	06	21.11.12	APPD.	05	29.12.11	APPD.	04	03.11.11	APPD.	03	11.03.11	APPD.
		<i>[Signature]</i>			<i>[Signature]</i>			<i>[Signature]</i>			<i>[Signature]</i>			<i>[Signature]</i>			<i>[Signature]</i>
		CHECKED			CHECKED			CHECKED			CHECKED			CHECKED			CHECKED
NOTE - 10 ADDED.			NOTE - 9 WAS NOT ON.			8 HOLES DESCRIPTION MODIFIED. (REF.B6)			IN BOM WT. 6.5 WAS 10KG.			NOTE 8 WAS NOT ON DRG. DIGITIZED & UPDATED.			TOL. NO. 1578995 DIM. 340.1883 WAS 340.1857		
ZONE			ZONE			ZONE			ZONE			ZONE			ZONE		
(TCM 332)																	

REV.	DATE	ALTERED	-SD-
		CHECKED	-SD-
		APPD.	-SD-
02	04.11.08		
STYLE NO. TABLE WAS NOT ON.			
ZONE			

REV.	DATE	ALTERED	-SD-
01	15.9.2001	CHECKED	-SD-
		Appd.	-SD-

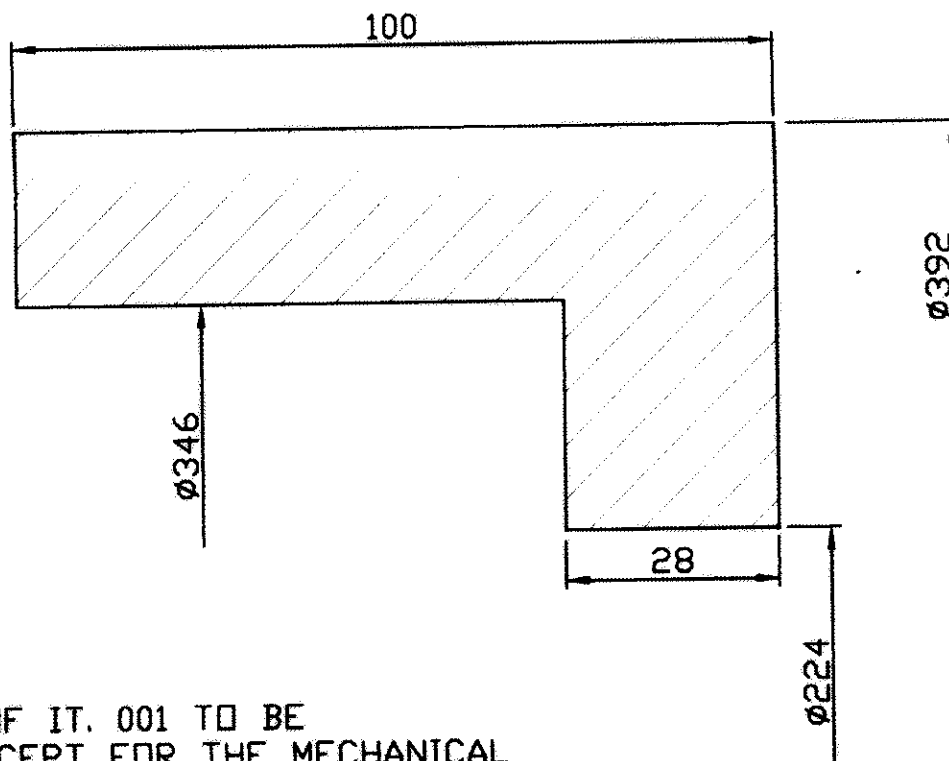
IN SECTION-AA DIM. 2
WAS ON.

DEPT. TIME	GRADE OF UNF. DIN6.3/M/F		SCALE NTS	WEIGHT(G.) 6.5	REF. TO ASSY. DRG. 043915500002	ITEM NO. -	NO. OF ITEM
CODE A05	AA0230208					0002	
TITLE END COVER (GEARWHEEL END) (CNC MACHINED)							
DRAWING NO. 14391580002						REV. 09	
SHT. NO. 01		NO. OF SHT. 01					

1233186/2023/HEP-TAM-1500


THE INFORMATION ON THIS DOCUMENT IS THE PROPERTY OF BHARAT HEAVY ELECTRICALS LIMITED.
IT MUST NOT BE USED DIRECTLY OR INDIRECTLY IN ANY WAY DETRIMENTAL TO THE INTEREST OF THE COMPANY.

REV.	DATE	ALTERED	CZ	ADDITIONAL INFORMATION
01	30.05.09	CHECKED	MA	
		APPROVED		STATUS OF DRAWING
DRG. UPDATED & DIGITIZED				DISTRIBUTION TME-1 TNX-1 OF PRINTS TXM -4



NOTES:-

1. MATERIAL OF IT. 001 TO BE AA19331 EXCEPT FOR THE MECHANICAL PROPERTIES WHICH SHALL CONFORM TO IS 2004 CLASS 2 TABLE 2
2. MACHINE ALL OVER TOL ± 0.5 ON ALL DIMS.
3. ALL CORNERS RADII SHALL BE $0.5+0/-0.3$
4. SAMPLE $\phi 25 \times 600$ LONG AS PER 11.2 OF AA 19331 TO BE SUPPLIED FOR TESTING.

REF. DRG. NO.	001	ENCLOSURE FORGING	AA19331	KG	19
	REMARKS	ITEM NO.	DESCRIPTION	MATL. CODE	UNIT WT.
SIGN. & DATE				MATL. SPECN.	QTY.
INVENTORY NO.	DEPT. TME	UNTO. DIMS. GR	SCALE	WEIGHT(KG)	REF. TO ASSY. DRG.
	CODE 405		NTS	19	14391580001
	 BHARAT HEAVY ELECTRICALS LTD. BHOPAL			NAME SANTOSH SIGN Sd/- DATE 15.01.05	NO. OF VAR.
	DEPT. TME UNTO. DIMS. GR SCALE NTS WEIGHT(KG) 19			REF. TO ASSY. DRG. 14391580001	ITEM NO. 001
	TITLE ENCLOSURE ROUGH M/C (FORGING) TM4303 BY, DY			DRAWING NO. 44391580002	REV 01
				SHT. NO 01	NO. OF SHT. 01

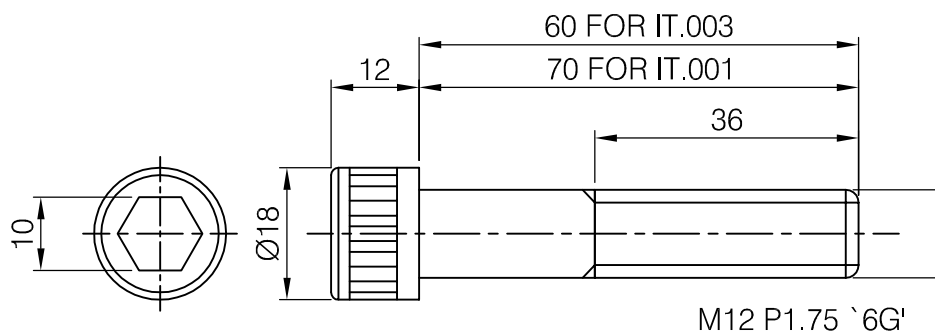
FIRST ANGLE PROJECTION
1233186/2023/HEP-TAM21300

(ALL DIMENSIONS ARE IN mm)

BHARAT HEAVY ELECTRICALS LIMITED.

THE INFORMATION ON THIS DOCUMENT IS THE PROPERTY OF
IT MUST NOT BE USED DIRECTLY OR INDIRECTLY IN ANY WAY DETRIMENTAL TO THE INTEREST OF THE COMPANY.


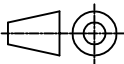
REV.	DATE	ALTERED	A.S.	REV.	DATE	ALTERED	-SD-	ADDITIONAL INFORMATION
08	31.10.19	CHECKED	A.S.	07	22.1.09	CHECKED	-SD-	10T 827-635
		APPROVED	A.S.			APPROVED	-SD-	
IN REMARKS COLUMN OF BOM IT.001, 'UNBREAKO BOUGHTOUT' DELETED.				DRG. DIGITIZED & UPDATED				STATUS OF DRAWING
								DISTRIBUTION TME-1 TNX-1 OF PRINTS TXM -4



STYLE LIST		
VAR	IT.NO.	STYLE NO.
	001	BP9014752555

NOTES:-

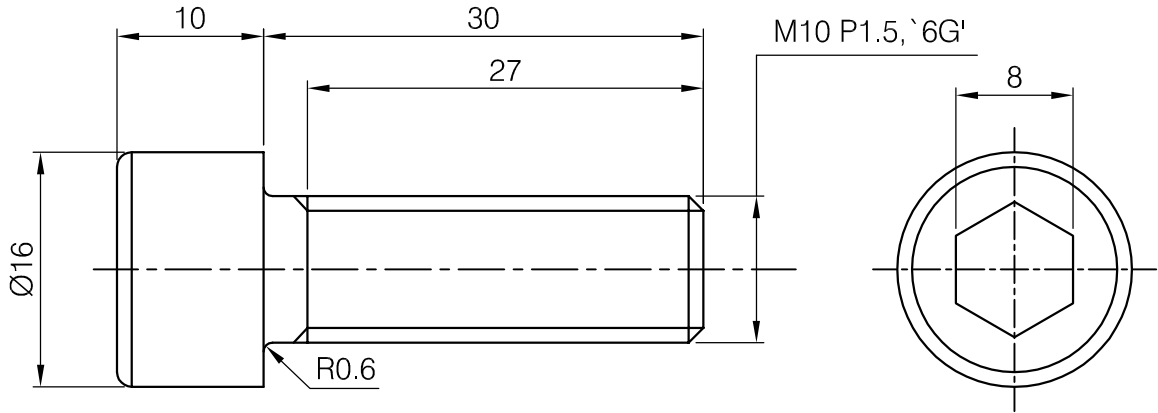
1. IT. 002 TO BE APPLIED ON THREAD BEFORE TIGHTENING SCRU.
2. SCRU TO BE 100% M.C.D. TESTED TO B.P. 0850178.

TH IT	REF. DRG. NO.	SEE NOTE-1	003	SOC HD CAP SCRU M12x60 P12.9				KG	0.07		
		AS REQD,	002	LOCKTITE-270				KG	0.004		
		SEE NOTE-1	001	SOCKET HEAD CAP SCRU M12x70, P12.9				KG	0.08		
		REMARKS	ITEM NO.	DESCRIPTION	STD	MATL. CODE		A C	UNIT	UNIT WT.	
						MATL. SPECN.				QTY.	
		CARD TYPE 3	28	28	CARD TYPE 1	28		CARD TYPE 2			
SIGN. & DATE	<div><div><div>बी.एच.ई.एल.</div><div></div></div><div>BHARAT HEAVY ELECTRICALS LTD. BHOPAL</div></div>	DRN.	NAME		SIGN		DATE		NO.OF VAR.		
			M.R.P.		Sd/-		22.11.87				
			CKD.		S.G.D.		Sd/-			25.11.87	
			APPD.		S.K.S		Sd/-			26.11.87	
INVENTORY NO.	DEPT. TME	GRADE OF UN.TOL. M			SCALE N.T.S.	WEIGHT(KG) 0.084	REF.TO ASSY.DRG.		ITEM NO.	NO.OF ITEM	
	CODE 405	AA0230208					04391560003				
	TITLE SOCKET HEAD CAP SCRU HS 15250A 25 KV AC LOCO							DRAWING NO. 44391560003		REV 08	
						SHT.NO 01		NO.OF.SHT. 01			

BHARAT HEAVY ELECTRICALS LIMITED.

THE INFORMATION ON THIS DOCUMENT IS THE PROPERTY OF
IT MUST NOT BE USED DIRECTLY OR INDIRECTLY IN ANY WAY DETRIMENTAL TO THE INTEREST OF THE COMPANY.

REV.	DATE	ALTERED	A.S.	REV.	DATE	ALTERED	-SD-	ADDITIONAL INFORMATION
07	31.10.19	CHECKED	A.S.	06	22.1.09	CHECKED	-SD-	10T 827-633
		APPROVED	A.S.			APPROVED	-SD-	
1 HOLE DIA. 2.5 DELETED. IN REMARKS COLUMN OF BOM IT.001, 'UNBREAKO BOUGHTOUT' DELETED.				DRG. DIGITIZED & UPDATED				STATUS OF DRAWING
								DISTRIBUTION OF PRINTS
								TME-1 TNX-1 TXM -4



STYLE LIST		
VAR	IT.NO.	STYLE NO.
	001	BP9014752547

NOTES:-

1. IT. 002 TO BE APPLIED ON THREAD BEFORE TIGHTENING TO SCRU.
2. SCRU TO BE 100% M.C.D. TESTED TO BP0850178 .

REF. DRG. NO.	AS REQD,	002	LOCKTITE-270	STD	KG	0.004
SIGN. & DATE	SEE NOTE-1	001	SOCKET HEAD CAP SCRU M10x30, P12.9	STD	KG	0.03
INVENTORY NO.	REMARKS	ITEM NO.	DESCRIPTION	STD	A/C	UNIT
SIGN. & DATE	CARD TYPE 3	28	28	CARD TYPE 1	28	CARD TYPE 2
SIGN. & DATE	DEPT.	TME	GRADE OF UN.TOL.	SCALE	WEIGHT(KG)	REF.TO ASSY.DRG.
SIGN. & DATE	CODE	405	AA0230208	N.T.S.	0.034	04391560003
SIGN. & DATE	TITLE	SOCKET HEAD CAP SCRU HS 15250A 25 KV. AC. LOCO	DRAWING NO.	44391560001	REV	07
SIGN. & DATE	SHT.NO	01	NO.OF.SHT.	01		