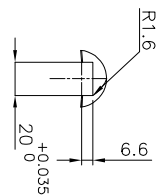
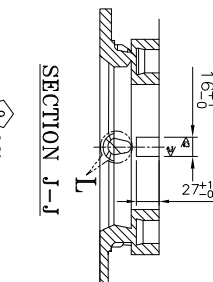
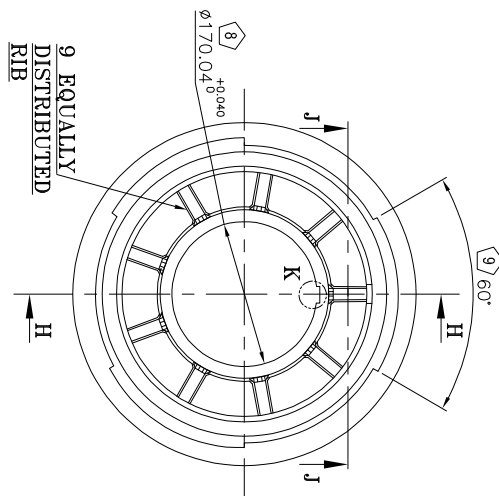
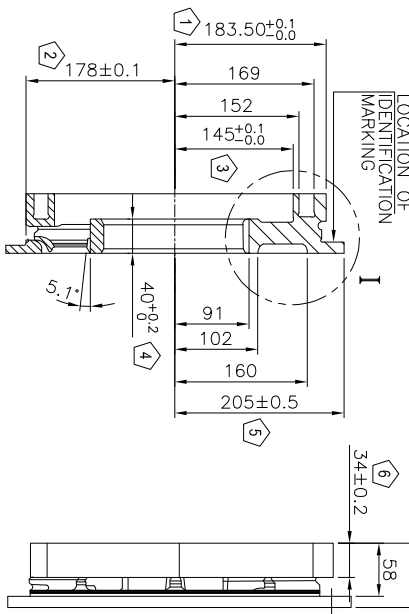


TOOL LIST		
IT.NO.	TOOL NO.	DESCRIPTION
	1605168	STATIC BALANCING MANDREL REQUIRED FOR BALANCING

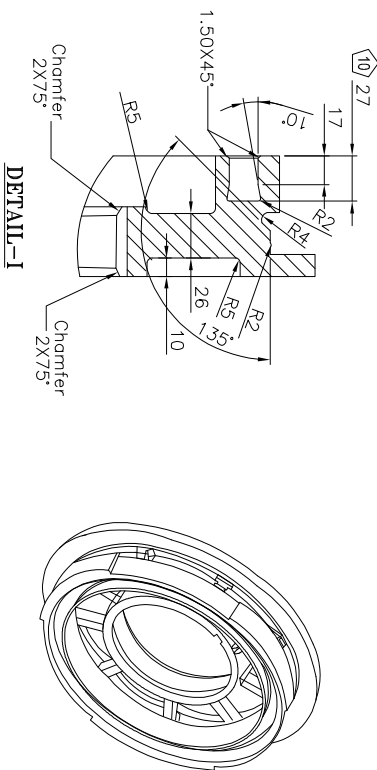


## SECTION J-J

### DETAIL-K



## SECTION H-H




DETAIL-1

- NOTES:-

1. CASTING SHALL BE CAREFULLY SCOLED AND CLEANED.
2. REMOVE ALL SHARP EDGES AND CORNERS.
- 2.1. ALL 10 NOS. "O" MARKED DIMENSION ARE CRITICAL TO QUALITY (CTQ) & S.L. NO. OF CTQ DIMENSION ARE INSCRIBED IN O e.g. 100.
3. SUPPLIER'S INITIAL/TRADE MARK, MANUFACTURERS SERIAL NO. BHEL PO NO. BATCH NO. & DATE OF MFG. IN MM-YY FORMAT TO BE ETCHED AT THE SHOWN LOCATION.
4. SURFACE FINISH OF UNMACHINED CASTED SURFACE TO BE AS PER IS:3073.
5. QUALITY CHECKING OF COMPONENT TO BE DONE AS PER SPECIFICATION TM12545 (LATEST REV.).
6. QAP FOR CASTING TO BE AS PER QTM/QAP/VENDOR/13-14/001 (LATEST REV.).
7. ADDITIONAL MATERIAL SHALL NOT BE PROVIDED ON SURFACES WHERE MACHINING SYMBOL IS NOT INDICATED. TOLERANCES ON UNTOLERATED CASTING SURFACES SHALL BE AS PER IS:8350. CLASS-2.
8. COMPONENT TO BE PRIMER PAINTED WITH INORGANIC ETHYL ZINC SILICATE PRIMER (AA561113) AS PER SCHEME NO. 8 OF TABLE-II(c) OF SPECIFICATION AA0674123 (PAGE NO. 22 OF 30).
9. ALL MACHINED/ROUGH MACHINED SURFACES TO BE PROTECTED WITH TRP.

[illegible]

ADDITIONAL INFORMATION SKEI. 4732 (ALT.1)	TYPE OF PRODUCT OR NAME OF CUSTOMER/PROJECT	6FRA-6068			
STATUS OF DRAWING					
DISTRIBUTION OF PRINTS TME-1, TMM-3, TNN-1	 <b>BHARAT HEAVY ELECTRICALS LTD.</b> <b>BHOPAL</b>	NAME	SIGN	DATE	NO. OF VARS.
		DR. BHADURABAI	-sd-	07.09.10	
		CHD. D.K.	-sd-	07.09.10	
		APRD. A.S.	-sd-	07.09.10	00

REV.	DATE	ALTERED	REASON	REVIEW	DATE	ALTERED	REASON	REVIEW			
05	09.03.21	01	APPROVED	04	20.11.22	03	07.03.16	02			
DRAWING TITLE MODIFIED.				DRAWING TITLE MODIFIED.				DRAWING TITLE MODIFIED.			
NOTES REARRANGED.				NOTES REARRANGED.				NOTES REARRANGED.			
CRITICAL TO QUALITY DIMMS.				CRITICAL TO QUALITY DIMMS.				CRITICAL TO QUALITY DIMMS.			
ARE "Q" MARKED AND				ARE "Q" MARKED AND				ARE "Q" MARKED AND			
NUMBERED.				NUMBERED.				NUMBERED.			
ZONE				ZONE				ZONE			
TOOL LIST APPROVED.				TOOL LIST APPROVED.				TOOL LIST APPROVED.			
(TOM-357)				(TOM-357)				(TOM-357)			
NOTE-4 WAS ON.				NOTE-4 WAS ON.				NOTE-4 WAS ON.			
ZONE				ZONE				ZONE			
C2 SHOWN IN SEC.-41. DIM-402 WAS NOT OF				C2 SHOWN IN SEC.-41. DIM-402 WAS NOT OF				C2 SHOWN IN SEC.-41. DIM-402 WAS NOT OF			
C6 DIM-4170-604 WAS STOPPED. DIMS IN SEC				C6 DIM-4170-604 WAS STOPPED. DIMS IN SEC				C6 DIM-4170-604 WAS STOPPED. DIMS IN SEC			
1004. NOTES 5.16 & 1002 ON IN NOTE 3. DIM 632.				1004. NOTES 5.16 & 1002 ON IN NOTE 3. DIM 632.				1004. NOTES 5.16 & 1002 ON IN NOTE 3. DIM 632.			
1402. WHERE 8004, 9200 & DIM-178. APPROD				1402. WHERE 8004, 9200 & DIM-178. APPROD				1402. WHERE 8004, 9200 & DIM-178. APPROD			

REV.	DATE	ALTERED	CHECKED	SIGNATURE	DATE	REMARKS
01	22.11.11	APPROVED				
ZONE DRC. UPDATE & DIGITIZED.						
TITLE			<p align="center"><b>ROTOR END RING (FOR SCHEME-II ROTOR)</b></p>			
DESIGN CODE	UNITS	SCALE	WEIGHT (K.G.)	REF. TO ASSY. DRC.	ITEM NO.	NO. OF ITEMS
405	N.I.S.	14.2	1 445 45 64 052	008	001	05
DRAWING NO.				<p align="center"><b>2 445 45 64 053</b></p>		
SHT. NO.		01		NO. OF SHT.		01