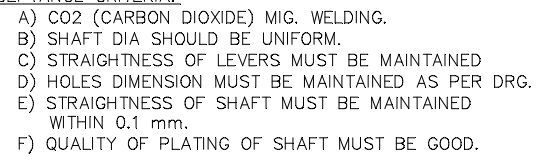


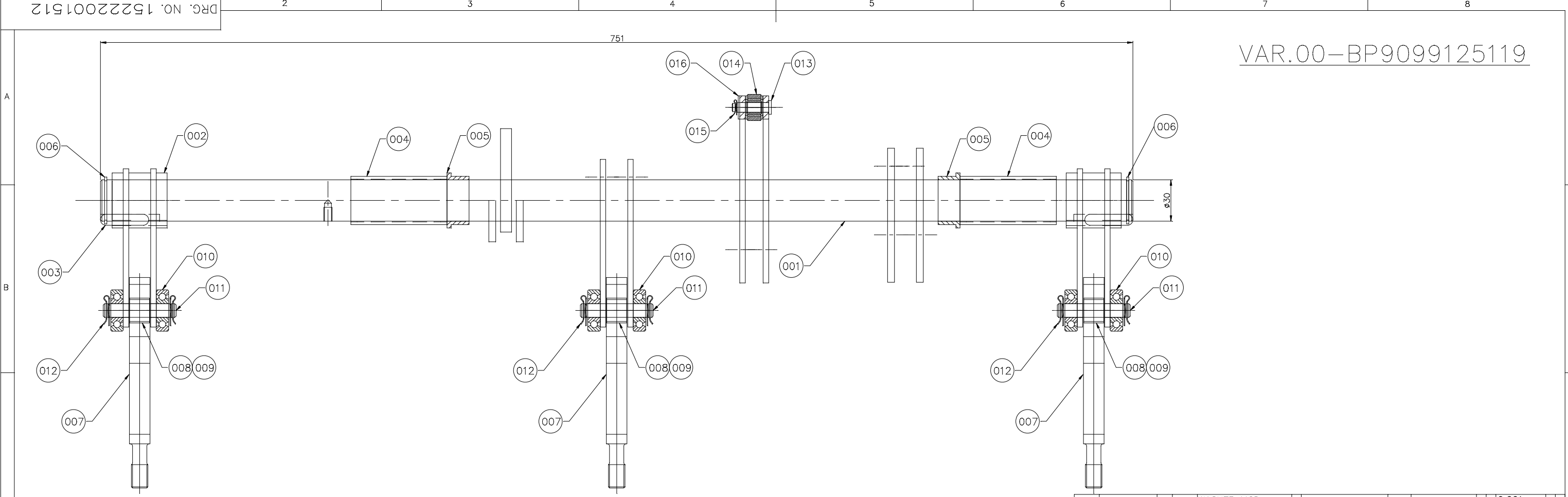
File No. HEP-SCROSWM(Misc)/104/2026-HEP-SWM20900 (Computer No. 302290) 4



GES NO.: 409531065, FOR B14 V.I

[illegible]

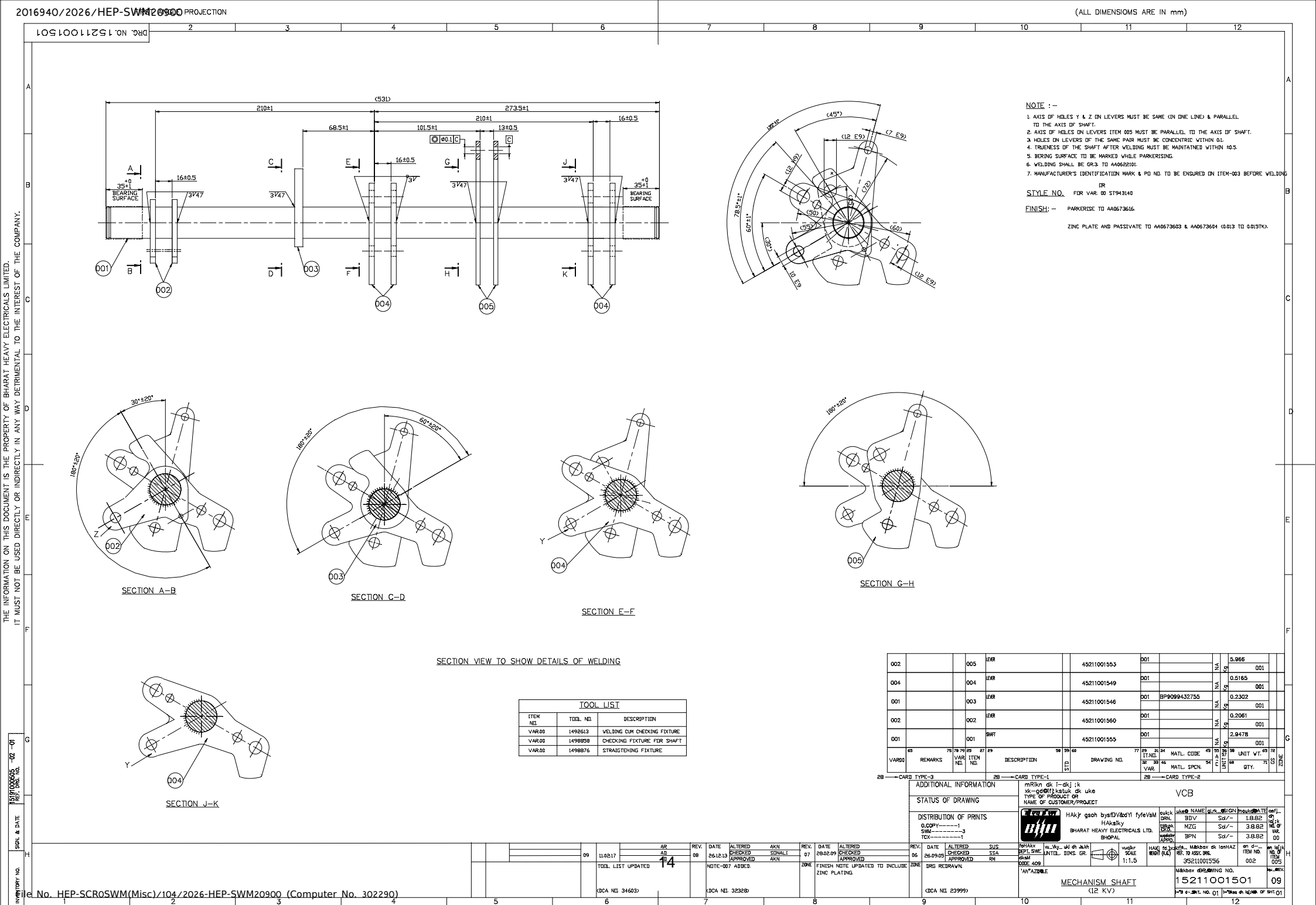
SIGN AND DATE	15222001512 -03 -01	REF. DRG. NO.
---------------	---------------------	---------------



VAR.00

003		016	WASHER MCD 8.4-ST			AA7161001056	NA	Kg	0.001		
001		015	CLIP	25211001588	002		NA	Kg	0.001		
001		014	BEARING SUPPORT ROLLER	45211001621	001		NA	Kg	0.018		
001		013	PIN	45211001512	001		NA	Kg	0.020		
006		012	CLIP	25211001588	006		NA	Kg	0.003		
003		011	PIN	45211001595	002		NA	Kg	0.0489		
006		010	BALL BEARING	45211001633	001		NA	Kg	0.075		
003		009	BUSH	45211001545	001		NA	Kg	0.011		
003		008	RUBBER SPRING	45211001631	001		NA	Kg	0.003		
003		007	SPRING GUIDE	45211001544	003		NA	Kg	0.232		
002		006	CIRCLIP L/T A30-ST			AA7167001066	NA	Kg	0.001		
002		005	BUSH	45211001505	001		NA	Kg	0.169		
002		004	SPACER	25211001585	007		NA	Kg	0.104		
002		003	KEY	45211001649	001		NA	Kg	0.070		
002		002	LEVER	35211001523	01		NA	Kg	0.874		
001		001	SHAFT	15211001502	01		NA	Kg	7.105		
VAR. 00.	65	75	78 79	25 27 29	58 59	64	77	32 33 34	46	54	65 72
REMARKS		VAR. NOL	ITEM NOL	DESCRIPTION	STD	DRAWING NO.	UNIT VAR.	MATL. CODE	MATL. SPCLN.	UNIT WT.	QTY.
PR → CARD TYPE-3			PR → CARD TYPE-1				PR → CARD TYPE-2				

ADDITIONAL INFORMATION		mRkn dk i-kj;k xk-gd@if;kstuk dk uke TYPE OF PRODUCT OR NAME OF CUSTOMER/PROJECT		VM-36	
STATUS OF DRAWING		HAKjr gsoh bysfDV&dYl fyfeVsM		uke@NAME gLrk@SIGN fnuakd@DATE	
DISTRIBUTION OF PRINTS		HAKsiky BHARAT HEAVY ELECTRICALS LTD. BHOPAL		osfj- la;lk NO. OF VAR.	
O.COPY-----1 SWM-----3 TCX-----1				cuk;k DRN AKN Sd/- 26.09.13	
REV. DATE		foHAXX DEPT SWE		vukjkr SCALE	
1 3.8.23		vu_Vky_uki dh Js.kh UNTOL. DIMS. GR.		HAKj fd_<X WEIGHT <KG>	
APPROVED AD		dksM CODE 409		M&kbZax dk lanHAZ REF. TO ASSY. DRG. 15222001512	
-NOTE WT.OF ITEM 001&002 ADDED. (DCA. NO. 38330		"kh"AZ@LE		en d-- ITEM NO. - en la;k NO. OF ITEM 016	
		MECHANISM SHAFT ASSY.		M&kbZax @RANG NO. 15222001512	
				i="B d_@HT. NO.01 i="Bksa dh la; NO. OF SHT.01	





REV.	DATE	ALTERED	REV.	DATE	ALTERED	Sd/-
05	20.10.05	CHECKED APPROVED RM	04	24.2.96	CHECKED APPROVED	Sd/- Sd/-
	DRG. RE-PAWN.			DRG. RETRACED FINISH WAS TO PR. S7608A MAT. CODE FOR ITS. 001 TO 006 ADDED.		
	(DCA NO. 24155)			(DCA NO. 07497)		

ELECTRICALS PLANT (HEP) on 07/05/2026 12:17 pm 6







FINISH : -  
BLACK PHOSPHATING TO PR. S. AA 0673616  
HARDNESS SHALL BE 430-475 HVS

- 1> THE CLIP SHALL COMPLY WITH TOLERANCES AS PER DIN 7168
- 2> PRODUCT STD. SWGR. SG 11701 SHALL BE REFERED FOR QUALITY CHECKS & OTHER ASPECTS.
- 3> DIM d1 AND d2 ARE PIN DIMENSIONS, THEREFORE CORRESPONDING DIMENSION ON CLIP SHALL HAVE CLOSE CLEARANCE FIT & PROVIDE AXIAL LOAD CAPACITY.

ADDITIONAL INFORMATION
STATUS OF DRAWING

MRikn dk i-dkj :k xk-gg@fjksktuk dk uke TYPE OF PRODUCT OR NAME OF CUSTOMER/PROJECT		VCB	
 HAKjr gsoh bysIDVdYI fyseVSM HAKsiky BHARAT HEAVY ELECTRICALS LTD. BHOPAL		uke@NAME B.D.V.      Sd/- M.Z.G.      Sd/- B.P.N./R.K.G.      Sd/-	
gskj DRN gskj CSD Lohd APPD		glrk_SIGN 02-01-83 07-01-83	
fothAky DEPT@WE dskM 409 CUDJ		en dskM ITEM NO. 006	
vu_vky_uki dk js.kh UNTIL. DIMS. GR. AA023020B		en dskM ITEM NO. 006	
 vuqjkr SCALE 1:1		HAKj fd_x WEIGHT (K.G.) -	
"kh"AZB@LE		M&kBZax BRAVING NO. 25211001588	
CLIP		i="g d_SHT. NO.01 i="Bkso dk i@n d= SHT.01	
		i@n d= SHT.01 04	

REV.	DATE	ALTERED
04		CHECKED
		APPROVED
DRG. REDRAWN.		
(DCA NO. 7340 )		

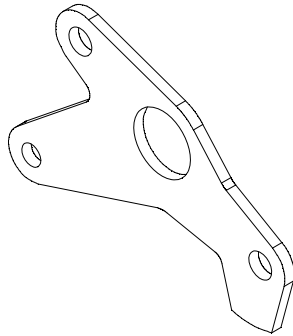
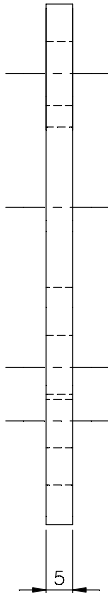
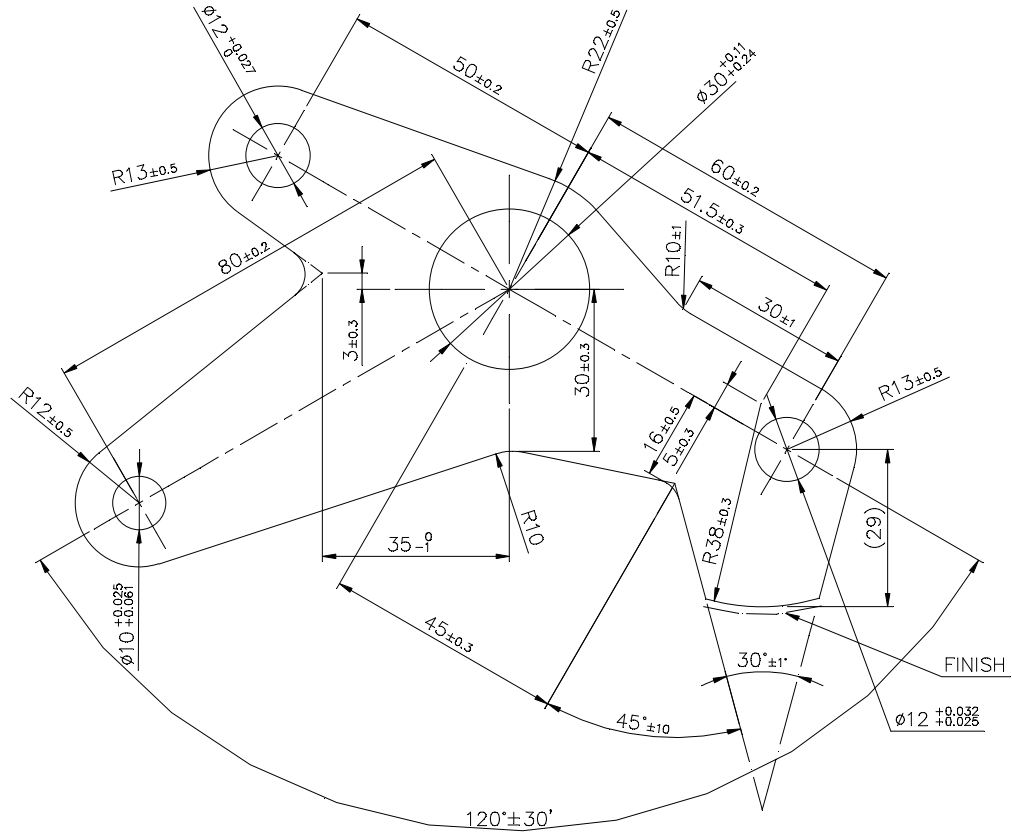
THE INFORMATION ON THIS DOCUMENT IS THE PROPERTY OF BHARAT HEAVY ELECTRICALS LIMITED.  
IT MUST NOT BE USED DIRECTLY OR INDIRECTLY IN ANY WAY DETRIMENTAL TO THE INTEREST OF THE COMPANY.

CZ-3 521 10 01510-R00-S01  
REF.DRG.NO.

SIGN. & DATE

INVENTORY NO.

DRG NO 3 521 10 01510



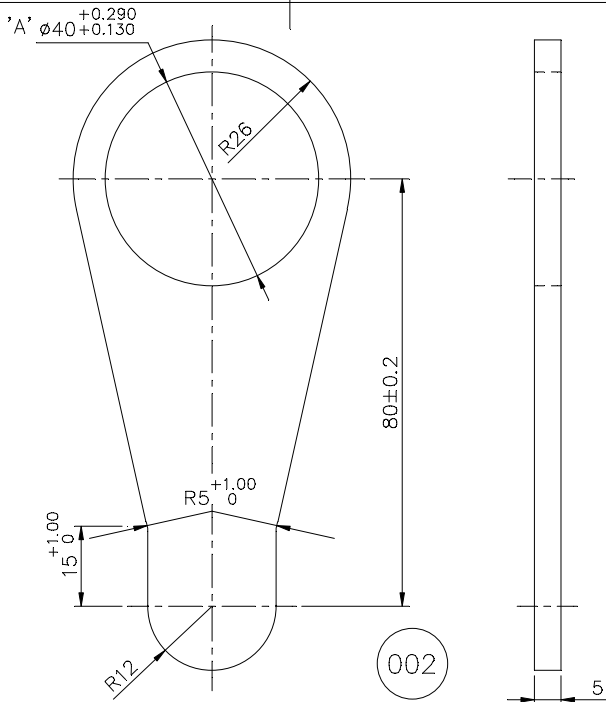
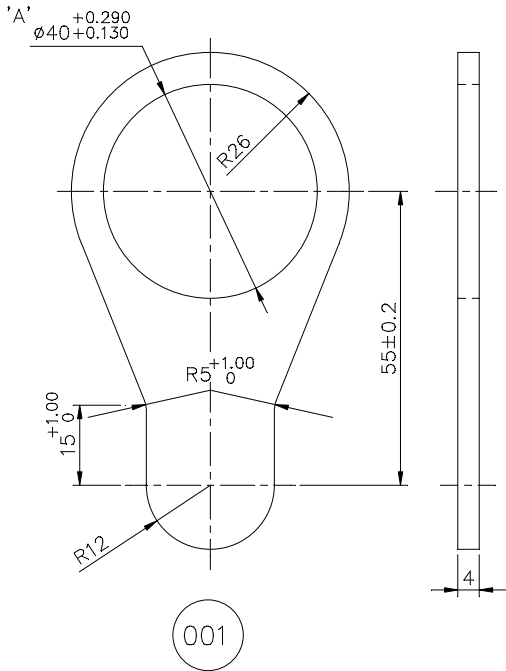
- TOOL LIST
- 1492625 – PIERCING A7 BLANKING TOOL (FOR300/500T PRESS)
  - 1492603 – 10E9 REAMER
  - 1492604 – 10E9 PLUG GAUGE
  - 1492611 – 12E9 REAMER
  - 1492612 – 12E9 PLUG GAUGE

			001	5TKx102x147 LG STR. STL. PLATE				AA 101808013				
								AA 10108			001	
VAR 00	REMARKS	VAR NO.	ITEM NO.	DESCRIPTION	STD	DRAWING NO.	IT.NO.	MATERIAL CODE	A	UNIT	UNIT WT.	
							VAR	MATL. SPCN.	C		QTY	

ADDITIONAL INFORMATION				TYPE OF PRODUCT OR NAME OF CUST/PROJ									
STATUS OF DRAWING				VCB									
DISTRIBUTION OF PRINTS				<div>वी.एच.ई.एल. BHARAT HEAVY ELECTRICALS LIMITED BHO PAL</div>									
SWE	SWM	TCX											
1	3	1											
REV	DATE	DRN	DEPT	UN.	TOL.	DIM.	GR.	SCALE	WEIGHT	REF TO ASSY	ITEM	NO.	NO.
		CKD	SWE	409	AA	0230208	M		(KG.)	2 517 10 01510	003	001	001
		APPD	CODE										
19										LEVER			
										DRG NO 3 521 10 01510			
										SHT.ND. 01 NO.OF SHT. 01			



DRG. NO. 3 521 10 01522



FINISH : - NATURAL

TOOL LIST

- 1492718 BLANKING TOOL FOR IT.001 & 003  
1492719 BLANKING TOOL FOR ITEM 002 & 004  
1492665 PIERCING TOOL (FOR 5 TK.)  
FOR ITEM 001 & 002  
(FOR 100T PRESS)

NOTE: - LIMITS OF HOLE 'A'  $\phi 40$   $\begin{smallmatrix} +0.290 \\ +0.130 \end{smallmatrix}$  APPLICABLE FOR MIN 1/3RD THICKNESS OF PLATE.

			004	-				AA1011808013			0.24		
			003	-				AA10108	NA	kg			
			002	-				AA1011713160	NA	kg	0.1518		
			001	-				AA10113	NA	kg			
			002	-				AA1011808013	NA	kg	0.24		
			001	-				AA10108	NA	kg			
			003	-				AA1011713160	NA	kg	0.1518		
			002	-				AA10113	NA	kg			
VAR00	65	75	78	79	25	27	29	58	59	60	77	29	31
	REMARKS		VAR. NO.	ITEM NO.			DESCRIPTION	STD			DRAWING NO.	IT.ND.	34
												32	33
												46	54
												55	56
												58	65
												72	72
												UNIT WT.	QTY.
												GS	ZONE

28 → CARD TYPE-3

28 → CARD TYPE-1

28 → CARD TYPE-2

ADDITIONAL INFORMATION

STATUS OF DRAWING

DISTRIBUTION OF PRINTS

O.COPY-----1  
SWM-----3  
TCX-----1

mRikn dk i-dkj ;k  
xk-gd@fj;kstuk dk uke  
TYPE OF PRODUCT OR  
NAME OF CUSTOMER/PROJECT

VCB



HAKjr gsoh bysfDV&dYl fyfeVsm  
HAKsiky  
BHARAT HEAVY ELECTRICALS LTD.  
BHOPAL

uoke@NAME	gLrk@SIGN	fnaukd@ATE	osfj_ dh
BDV	Sd/-	-	lo[;k
MZG	Sd/-	18.8.82	NO. OF VAR
BPN	Sd/-	28.8.82	-

REV.	DATE	ALTERED	Sd/-
03	9.11.04	CHECKED	Sd/-
		APPROVED RM	Sd/-

foHAKx	vu_ Vky_ uki dh Js.kh
DEPT SWE	UNTDL.DMS. GR.
409	3 521 10 01522



vuqkr	HAKj fd_xk-
SCALE	WEIGHT (K.G.)
1:1	

vis_ M&kbZax dk lanHAZ	en d_-	en_ la[;k
REF. TO ASSY. DRG.	ITEM NO.	NO. OF ITEM
35213030576-001,002	-	004
35211001523-001,002		
45217001514-001		

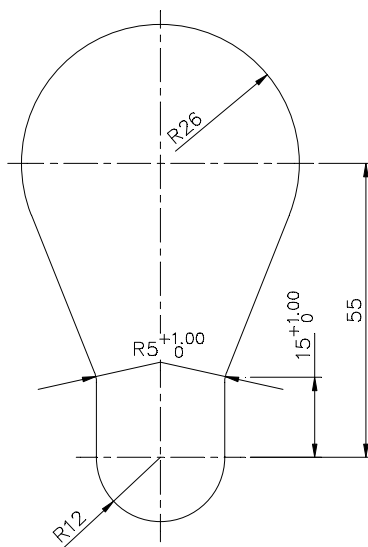
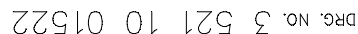
ITEM 003 & 004 ADDED.

'kh"AZA

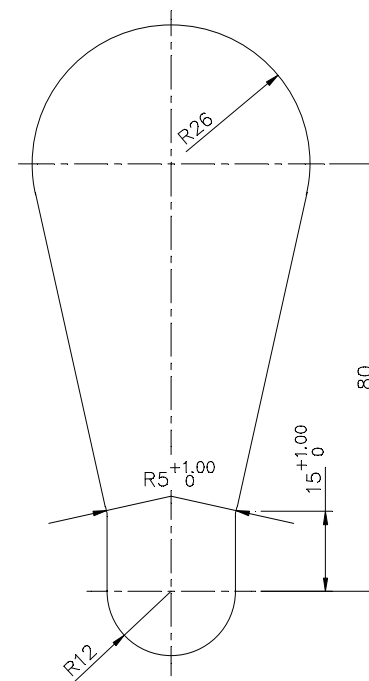
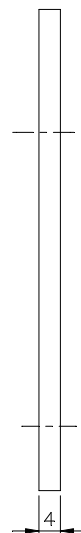
LEVER

3 521 10 01522

03



(003


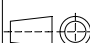


(004



FOR B.O.M. REFER SHT 01

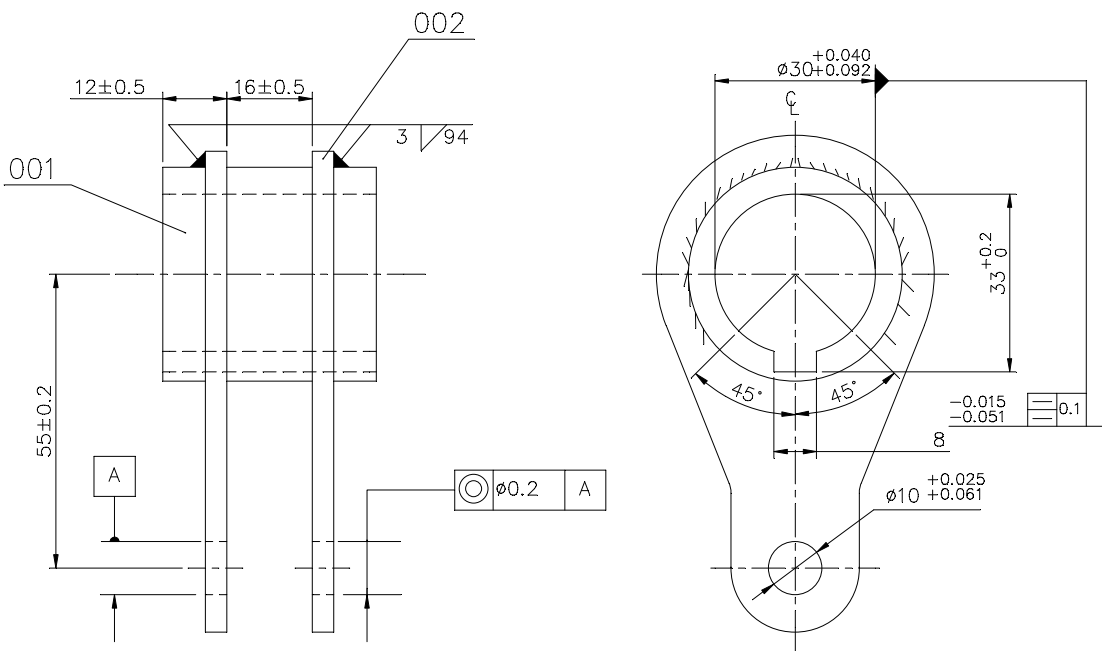
[illegible]

ADDITIONAL INFORMATION			mRikn dk i-dkj ;k xk-gd@if;kstuk dk uke TYPE OF PRODUCT OR NAME OF CUSTOMER/PROJECT			VCB							
STATUS OF DRAWING B			HAKjr gsoh bysfDV&dYl fyfeVsm			uke@NAMEglrk@SIGNfnaukd@DATEosfj_ d la;k NO. OF VAR							
DISTRIBUTION OF PRINTS			 HAKsiky BHARAT HEAVY ELECTRICALS LTD. BHOVAL			BDV MZG BPN			Sd/- Sd/- Sd/-	- 18.8.82 28.8.82	- - -		
REV.	DATE	ALTERED	Sd/-	foHAKx DEPT	SWE	vu_ Vky_ uki dh js.kh UNTIL DIMS. GR.		vuqjkr SCALE	HAKj fd_xk_— WEIGHT (KG.)	vis_ M&kBzax dk lanHAZ REF. TO ASSY. DRG. 35213030576-001,002 35211001523-001,002 45217001514-001		en d— ITEM NO.	en_ la; NO. OF ITEM
02	7.3.86	CHECKED	Sd/-	dkm CODE	409	AA0230208		1:1				-	004
ITEM 003 & 004 ADDED.			21			'kh"AZ@LE LEVER			vkjs[A d-dRAWING NO. 3 521 10 01522			iqu_@ 03	
(DCA NO. )									i="B d—S@. No. 02			i="Bkso dh la;_ NO. OF SHT. 02	

THE INFORMATION ON THIS DOCUMENT IS THE PROPERTY OF BHARAT HEAVY ELECTRICALS LIMITED IT MUST NOT BE USED DIRECTLY OR INDIRECTLY IN ANY WAY DETRIMENTAL TO THE INTEREST OF THE COMPANY

DRG. NO. 3 521 10 01523

FINISH: — TO BE ZINC PLATED & PASSIVATED TO 0.013 TK. MAXIMUM TO PRS. NO. AA0673603 & AA0673604 RESPECTIVELY.



TOOL LIST

- 1492709 – BROACHING FIXTURE
- 1492603 – 10 E9 REAMER
- 1492604 – 10 E9 PLUG GAUGE
- 1492658 – 30 E9 REAMER
- 1492659 – 30 E9 PLUG GAUGE
- 1492666 – WELDING FIXTURE
- 1492669 – TURNING FIXTURE
- 1492667 – DRILL JIG FOR 10 Eg HOLES
- 1492668 – BROACH

NOTES:-  
1. WELDING SHALL BE GR.-3 TO AA 0622101.

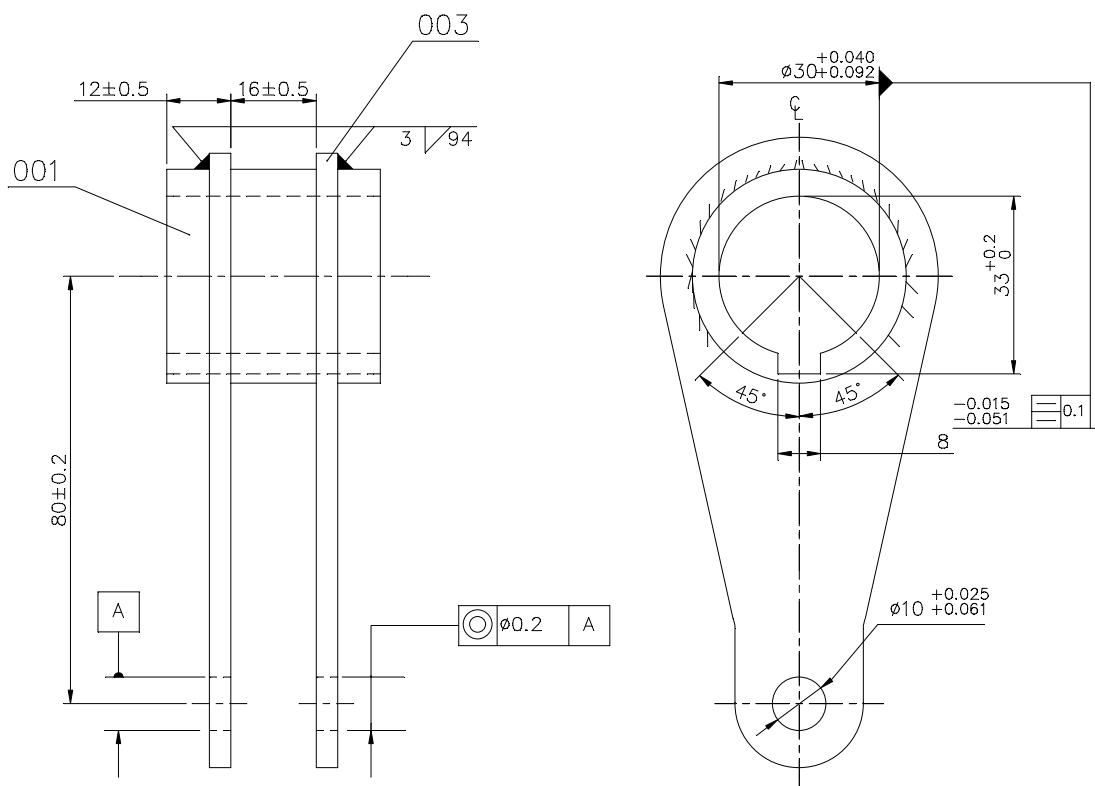
VAR00 – BP9099432062  
VAR01 – BP9099432070

VAR.00

002				003	LEVER		35211001522	002		NA																	
	002			002	LEVER		35211001522	001		NA	N.A.	0.1518															
001	001			001	HUB		45211001612	001		NA																	
VAR01	VAR00	65	75	78	79	25	27	29	DESCRIPTION	STD	58	59	60	77	29	31	34	MATL. CODE	45	55	56	58	UNIT WT.	65	72	ZONE	
															32	33	46	MATL. SPCN.	54	61	62	68	QTY.	71	CS		
28 → CARD TYPE-3										28 → CARD TYPE-1										28 → CARD TYPE-2							

REV. 04	DATE 11.11.13	ALTERED	AKN	ADDITIONAL INFORMATION		mRikn dk i-dkj ; k xk-gd@fj;kstuk dk uke TYPE OF PRODUCT OR NAME OF CUSTOMER/PROJECT																			
		CHECKED	PKN	STATUS OF DRAWING		VCB (36KV)																			
		APPROVED	MAK	DISTRIBUTION OF PRINTS		HAKjr gsoh bysfDV&dYl fyfeVsm HAKsiky BHARAT HEAVY ELECTRICALS LTD. BHOPAL																			
				(DCA NO. 32213)		0.COPY-----1 SWM-----3 TCX-----1																			
REV. 03	DATE 09.06.07	ALTERED	SAVALE	REV. 02	DATE 9.11.04	ALTERED		REV. 01	DATE 30.10.82	ALTERED	Sd/-	fahAKx DEPT SWE vdu_ Vky_ uki dh Js.kh UNTOL.DIMS. GR. M dksM CODE 409 "kh"AZA													
		CHECKED	MANI			CHECKED	Sd/-			CHECKED	Sd/-	vqjkr SCALE 1:1 HAKj fd_xk- WEIGHT (K.G.) vis_ M&kbZax dk lanHAZ REF. TO ASSY. DRG. en d- ITEM NO. en_ la;k NO. OF ITEM													
		APPROVED	DIVYA			APPROVED	RM			APPROVED	Sd/-	35211001556 092 003													
WELDING SYMBOLE WAS 316S WELDING REMOVED ACROSS THE ARC LENGTH OF ANGLE MARKED 90° SHT.02 ADDED				DRG. REDRAWN.				TOOL NO. 1497666,1492669,1492667 & 1492668 ADDED.FOR IT.001 MAT. WAS 040x40LG. BRIGHT STEEL BAR TO BP10172 AND MAT.CODE BP 1010272012 STYLE NOS ADDED. (DCA NO. )				vkjs[A d-d 3 521 10 01523 i="B d- 01 i="Bksa dh la;k NO. OF SHT. 02													
				(DCA NO. 21627)								LEVER													

DRG. NO. 3 521 10 01523



VAR.01

65	75	78	79	25	27	29	58	59	60	77	29	31	34	MATL. CODE	45	55	56	58	UNIT WT.	65	72
REMARKS		VAR. NO.		ITEM NO.		DESCRIPTION		STD		DRAWING NO.		IT.NO.				A	UNIT				GS
												32	33	46	MATL. SPCN.	54		68	QTY.	71	73

28 —→ CARD TYPE-3

28 —→ CARD TYPE-1

28 —→ CARD TYPE-2

REV.	DATE	ALTERED	AKN
04	11.11.13	CHECKED	PKN
		APPROVED	MAK

#### ADDITIONAL INFORMATION


4 STATUS OF DRAWING

```
mRikn dk i-dkj ;k
xk-gd@ifj;kstuk dk uke
TYPE OF PRODUCT OR
NAME OF CUSTOMER/PROJECT
```

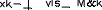
VCB (36KV)

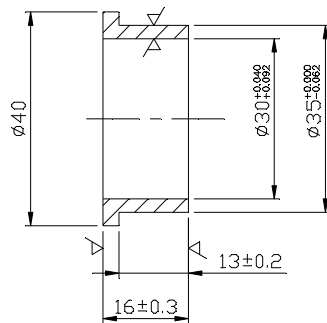
—FINISH NOTE MODIFIED.  
—NOTES 1 FOR WELDING MODIFIED.


-----  
DISTRIBUTION OF PRINTS


 HAKjr gsOh bysfDV&dYl fyfeVSm  
 HAKsiky  
 BHARAT HEAVY ELECTRICALS LTD.  
 BHOPAL

SM	ukc;k	uke@NAME	gLRk@SIGN	fnaukd@ATE	osfj_ di lcl;k
	DRN	BDV	Sd/-	10.8.82	NO. OF VAR
	tWpk CKD	MZG	Sd/-	19.8.82	
	wqeksfnr APPD	BPN	Sd/-	11.9.82	
					01

REV.	DATE	ALTERED	REV.	DATE	ALTERED	REV.	DATE	ALTERED	Sd/-	foHAKx DEPT SWE	vu_ Vky_ uki dh Js.kh UNTOL.DIMS. GR.		vuqkr SCALE	HAKj fd_xk- WEIGHT (KG.)	vis_ M&kbZax dk lanHAZ REF. TO ASSY. DRG.	en d-- ITEM NO.	en_ laj NO. OF ITEM
03	09.06.07	CHECKED APPROVED DIVYA	02	9.11.04	CHECKED APPROVED RM	01	30.10.82	CHECKED APPROVED Sd/-		dk-sll CODE: 409	M A25230200404		1:1		35211001556	092	003
WELDING SYMBOLE WAS 3/63		WELDING REMOVED ACROSS THE ARC LENGTH OF ANGLE MARKED 90' SHT.02 ADDED		DRG. REDRAWN.		TOOL NO. 1497666,1492669,1492667 & 1492668 ADDED.FOR IT.001 MAT. WAS 040x40LG. BRIGHT STEEL BAR TO BP10172 AND MAT.CODE BP 1010272012 STYLE NOS ADDED. (DCA NO. )		"kh"AZADLE		LEVER		vkjs[A d-000 DRAWING NO.		3 521 10 01523		04	
HER-SCB05SWM(DCA No. 25812)		HER-SWM20800 (Computer No. 302290)		(DCA No. 21627)								i="B d-000. No. 02		i="Bksa dh laj; NO. OF SHT. 02			



BP909 9431867				001		Ø40 x 16 Lg. HT BRASS ROD.				-		AA 12117		KG.		0.169							
65 REMARKS				7525 2729 ITEM NO.		DESCRIPTION				58 59 34 MATL. CODE		45 55 56 A C UNIT		58 UNIT WT.		65							
										46 MATL. SPCN.		54		58 QTY.		7							
28 → CARD TYPE-3				28 → CARD TYPE-1				28 → CARD TYPE-2															
<div><div>बी एच ई एल</div><div>BHEL</div></div>				HAKjr gsoh bysDV&hdYl fyfeVsM HAKsiky BHARAT HEAVY ELECTRICALS LTD. BHOPAL				uke NAME BDV		glrk SIGN Sd/-		frugkd DATE 24.9.82		osfj dh loq.k NO. OF VAR.									
								tkapk CKD MZG		Sd/-		25.9.82											
								vugeksfns APPD BPN/RKG		Sd/-		30.9.82											
foHAKx DEPT SWE		vu_ Vky_ uki dh js.kh UNTEL.DIMS. GR. M AA 0230205						vuqikr SCALE 1:1		HAKj fd_xk - WEIGHT (K.G.)		vis_M&k&zax dk lenHAZ REF. TO ASSY. DRG.  3 521 10 01556				en d - ITEM NO. 003		en loq.k NO. OF ITEM 001					
'Ah"AZ@C										vkjs[A d-BROWNG NO. 4 521 10 01505						iquREV. 02							
BUSH										HEP-SCROSWM(Misc)/104/2026-HEP-SWM20900 (Computer No. 302290)										i="B d - SHT. No. 01		i="Bkso dh loq.k NO. OF SHT. 01	

THE INFORMATION ON THIS DOCUMENT IS THE PROPERTY OF BHARAT HEAVY ELECTRICALS LIMITED  
IT MUST NOT BE USED DIRECTLY OR INDIRECTLY IN ANY WAY DETRIMENTAL TO THE INTEREST OF THE COMPANY

REV. DATE ALTERED

03 22.12.06

CHECKED  
APPROVED MAK

ADDITIONAL INFORMATION

DIM. FOR CHAMFER ADDED.

STATUS OF DRAWING

DISTRIBUTION OF PRINTS

SWE 1

SWM 3

TCX 1

2.3

0.74

0.5x45°

+0.000  
-0.075

+0.019  
+0.010

Ø10

Ø5

26.5

IT. 001 : 28.5

IT. 002 : 32.5

0.5x45°

NOTE :-

PINS SHALL BE STOKED IN OIL TO AVOID RUSTING

45211001512-R03-S01 REF. DRG. NO.	BP9099431570		002	10 DIA×32.5 LG. STAINLESS STEEL BAR	AA 1070221066				0.02	
	BP9099431465		001	10 DIA×28.5 LG. STAINLESS STEEL BAR	AA 10721				001	
					AA 1070221066				0.02	
					AA 10721				001	
REMARKS	ITEM NO.	DESCRIPTION	STD	MATL. CODE		54	55 A C I	56 UNIT	68	UNIT WT.
				MATL. SPCN.						QTY.
SIGN. & DATE	28 → CARD TYPE-3			28 → CARD TYPE-1			28 → CARD TYPE-2			
	<div><div><div><div>बीएचईएल</div><div>BHEL</div></div><div>HAKjr gsoh bysDV&amp;hdYl fyfeVsM HAKsiky BHARAT HEAVY ELECTRICALS LTD. BHOPAL</div></div></div> <div><div>uke NAME</div><div>gLRk SIGN</div><div>fnuakd DATE</div><div>osfj. dh</div></div> <div><div>cuk;k DRN</div><div>tkap;k CKD</div><div>vugakstmr APPD</div><div>N.K.W.</div><div>P.S.S.</div><div>D.K.D.</div><div>Sd/-</div><div>Sd/-</div><div>Sd/-</div><div>24-4-86</div><div>24-4-86</div><div>5-6-86</div><div>00</div></div>									
INVENTORY NO.	<div><div>foHAKx DEPT SWE</div><div>vu_ Vky_ uki dh js.kh</div><div>UNTIL DIMS. GR.</div><div>M</div><div>AA 0230208</div></div>		<div><div>chskM CODE</div><div>409</div></div>	<div><div>vuqikr SCALE</div><div>2:1</div></div>	<div><div>HAKj fd_xk_</div><div>WEIGHT (K.G.)</div></div>	<div><div>vis_M&amp;kbZax dk lanHAZ</div><div>REF. TO ASSY. DRG.</div><div>05213040524</div></div>		<div><div>en d_</div><div>ITEM NO.</div><div>073</div></div>	<div><div>en la;k</div><div>NO. OF ITEM</div><div>002</div></div>	
	<div><div>’Ah”AZBIE</div><div>PIN</div></div>				<div><div>vkjs[ A d-DRG. NO.</div><div>45211001512</div></div>		<div><div>laqUREV.</div><div>03</div></div>			
File No. HEP-SCR0SWM(Misc)/104/2026-HEP-SWM20900 (Computer No. 302290)										
<div><div>i="B d-SHT. No. 01</div><div>i="Bksa dh la[NO OF SHT. 01</div></div>										

THE INFORMATION ON THIS DOCUMENT IS THE PROPERTY OF BHARAT HEAVY ELECTRICALS LIMITED  
IT MUST NOT BE USED DIRECTLY OR INDIRECTLY IN ANY WAY DETRIMENTAL TO THE INTEREST OF THE COMPANY

REV. 07	DATE 8.12.04	ALTERED	REV. 06	DATE 25.9.99	ALTERED	Sd/-	ADDITIONAL INFORMATION
		CHECKED			CHECKED	Sd/-	
		APPROVED RM			APPROVED	Sd/-	
DRG. REDRAWN. & SHT. 02 & 03 ADDED			FOR IT. 001 DIM 'a' WAS 80 & DIM. 27 WAS 32.			STATUS OF DRAWING	
(DCA NO. 20121)			(DCA NO. 9695)			DISTRIBUTION OF PRINTS      □.C.-1      SWM-4 TCX-1	

TOOL LIST :-

STD TOOL - CENTRALISING KEY WAY MILLING FIXTURE  
1492776 - M12x1 THREAD GUAGE  
1498766 - FORM TOOL (L.H.)  
1498767 - FORM TOOL (R.H.)  
1564247 - SLOTTING TOOL

NOTE :-

PROTECT THE THREAD BY PELIFILM  
IMMEDIATELY AFTER MACHINING.


FINISH :-

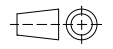
NATURAL

ITEM	REF TO ASSY.
001	35211001500 (101)
002	35211001500 (102)
003	
004	

ST943438	004	27 DIAx134 LG STAINLESS STEEL BAR	AA10721	0.198
ST943170	003	27 DIAx153 LG STAINLESS STEEL BAR	AA10721	0.232
ST943169	002	27 DIAx145 LG STAINLESS STEEL BAR	AA10721	0.218
ST943168	001	27 DIAx117 LG STAINLESS STEEL BAR	AA10721	0.169
REMARKS	ITEM NO.	DESCRIPTION	MATL. CODE	UNIT WT.
			MATL. SPCN.	QTY.

28 → CARD TYPE-3      28 → CARD TYPE-1      28 → CARD TYPE-2

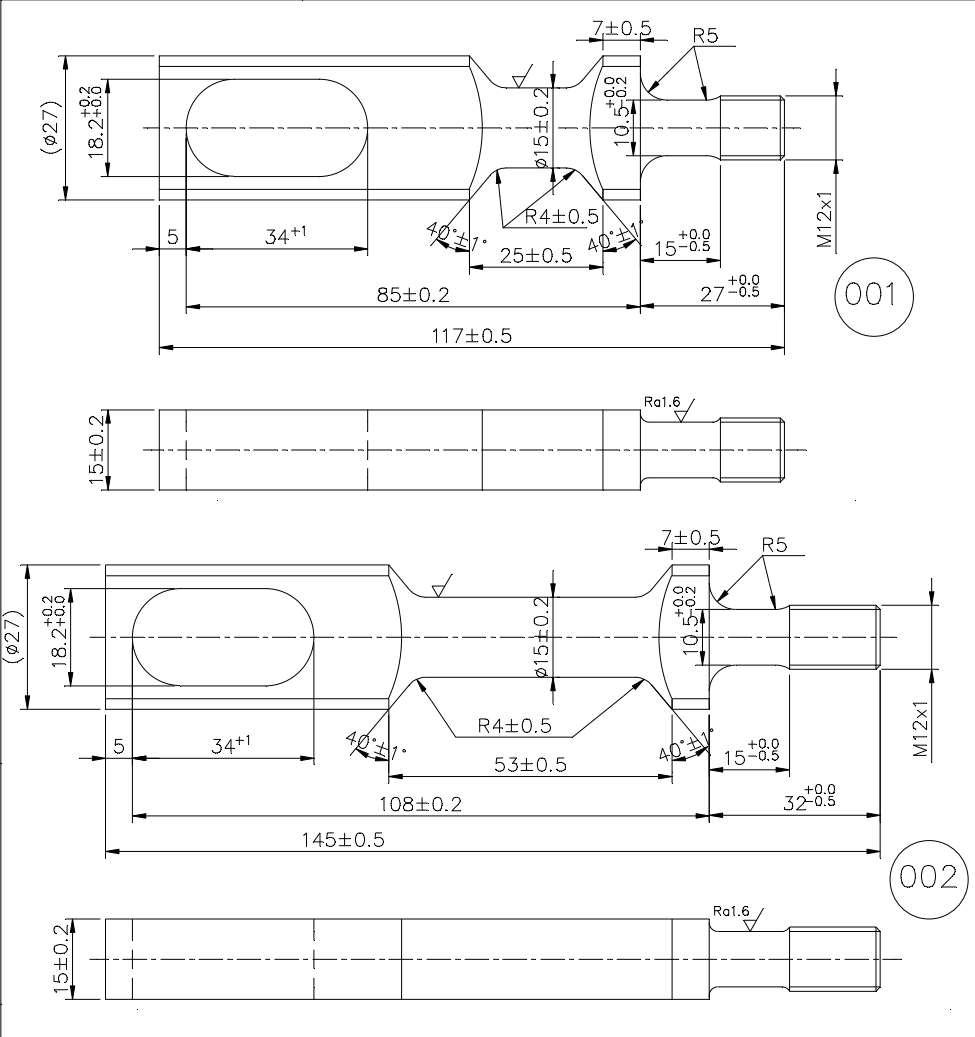
		HAKjr gsoh bysDV&hdYl fyfeVsM HAKsiky BHARAT HEAVY ELECTRICALS LTD. BHOPAL	uke NAME	qlrk- SIGN	fnuakd DATE	osfj_ dh la; k NO. OF VAR.
cuk;k DRN			TSE	Sd/-	-	
tkapk CKD			MZG	Sd/-	25.9.82	
vugkstns APPD			BPN/RKG	Sd/-	13.10.82	

foHAKx DEPT SWE	vu_ Vky_ uki dh js.kh UNTEL.DMS. GR.		vuglkr SCALE	HAKj fd_xk- WEIGHT (KG.)	vis_M&kbZax dk lanHAZ REF. TO ASSY. DRG.	en d- ITEM NO.	en la; k NO. OF ITEM
dkm CODE 409	C/M/F		1:1	-	35211001500	101 108	004
'Ah"AZB					vkjs[A d-DRAWING NO.	iquREV.	
4 521 10 01544						07	

THE INFORMATION ON THIS DOCUMENT IS THE PROPERTY OF BHARAT HEAVY ELECTRICALS LIMITED  
IT MUST NOT BE USED DIRECTLY OR INDIRECTLY IN ANY WAY DETRIMENTAL TO THE INTEREST OF THE COMPANY

SIGN. & DATE  
REF. DRG. NO.  
INVENTORY NO.

REV. 07	DATE 8.12.04	ALTERED CHECKED APPROVED RM	REV. 06	DATE 25.9.99	ALTERED CHECKED APPROVED Sd/-	Sd/- Sd/- Sd/-	ADDITIONAL INFORMATION
DRG. REDRAWN. & SHT. 02 & 03 ADDED			FOR IT. 001 DIM 'a' WAS 80 & DIM. 27 WAS 32.			STATUS OF DRAWING	
(DCA NO. 20121)			(DCA NO. 9695)			DISTRIBUTION □.C.-1 SWM-4 OF PRINTS TCX-1	



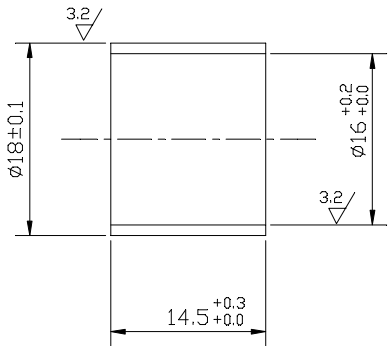
		HAKjr gsoh bysDV&hdYl fyfeVsM HAKsiky BHARAT HEAVY ELECTRICALS LTD. BHOPAL		uke NAME	gRk- SIGN	fnuakd DATE	osfj_ dh la; k NO. OF VAR.
foHAKx DEPT SWE		vu_ Vky_ uki dh js.kh UNIT/DMS. GR.		cuk; k DRN	TSE	Sd/-	-
dkm CODE 409				tkapk CKD	MZG	Sd/-	25.9.82
		vuqir SCALE		vugkstf APPD	BPN/RKG	Sd/-	13.10.82
HAKj fd_xk- WEIGHT (KG.)		vis_M&kbZax dk lanHAZ REF. TO ASSY. DRG.		en d-- ITEM NO.	101	108	en la; k NO. OF ITEM
'Ah"AZD		vkjs[A d-DRAWING NO.		en la; k NO. OF ITEM		101	004
4 521 10 01544		i="B d--SHT. No. 02		i="Bksa dh la; k OF SHT. 03		07	





THE INFORMATION ON THIS DOCUMENT IS THE PROPERTY OF BHARAT HEAVY ELECTRICALS LIMITED  
IT MUST NOT BE USED DIRECTLY OR INDIRECTLY IN ANY WAY DETRIMENTAL TO THE INTEREST OF THE COMPANY

REV.	DATE	ALTERED	REV.	DATE	ALTERED		ADDITIONAL INFORMATION		
		CHECKED							
		APPROVED							
			05	23.8.01					
			DRG. REDRAWN. BP CODE 12 DIGIT ADDED.  (DCA NO. 10893)			STATUS OF DRAWING			
						DISTRIBUTION OF PRINTS	SWE	SWM	TCX
							1	3	1



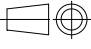
APPLY TRP :- CASTROL RUSTILD 630/HP  
RUSTOP 285 FOR STORAGE

NOTE :- ALTERNATIVELY THIS CAN BE MANUFACTURED  
FROM Ø20 BRT. S. BAR. TO AA 1010212095

521101545  
REF. DRG. NO.

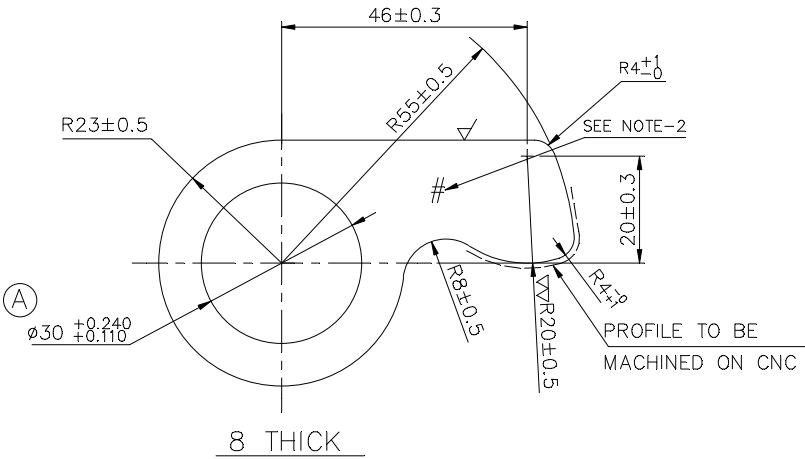
SIGN. & DATE

INVENTORY NO.

BP9099430220		001	213 Ø/Dx4.5 TK.x14.5 LG. M.S. TUBE(HFS)		BP 1011054990 AA 10154		KG.	0.0109							
REMARKS	ITEM NO.	DESCRIPTION	STD	MATL. CODE		UNIT WT.									
				MATL. SPCN.		QTY.									
28 → CARD TYPE-3			28 → CARD TYPE-1		28 → CARD TYPE-2										
<div><div><div>बी एच ई एल</div><div>BHEL</div></div><div>HAKjr gsoh bysDV&amp;hdYl fyfeVsM HAKsiky BHARAT HEAVY ELECTRICALS LTD. BHOPAL</div></div>					uke NAME T.S.E.		qlrk SIGN		fnugkd DATE 17.08.82		osfj_ dh la;q;k NO. OF VAR.				
					tkapK CKD M.Z.G.		Sd/-		17.08.82		-				
					vugaksfmr APPD B.P.N./R.K.G.		Sd/-		24.08.82		-				
foHAKx DEPT SWE		vu_ Vky_ uki dh js.kh UNTIL DIMS. GR. M AA 0230208				vuqikr SCALE 2:1		HAKj fd_xk_ WEIGHT (KG.) -		vis_M&kbZax dk lanHAZ REF. TO ASSY. DRG. 35211001500		en d_ ITEM NO. 003		en la;q;k NO. OF ITEM 001	
'Ah"AZDLE <div>BUSH</div>					vkjs[A d-DRAWING NO. 45211001545					iquREV. 05					
EP-SCROSWM(Misc)/104/2026-HEP-SWM20900 (Computer No. 302290)															
i="B d-SHT. No. 01 i="Bksa dh la;q;k NO OF SHT. 01															

52110/45211001546-R05-S01  
THE INFORMATION ON THIS DOCUMENT IS THE PROPERTY OF BHARAT HEAVY ELECTRICALS LIMITED  
IT MUST NOT BE USED DIRECTLY OR INDIRECTLY IN ANY WAY DETRIMENTAL TO THE INTEREST OF THE COMPANY

REV.	DATE	ALTERED CHECKED	AKN SONALI	REV.	DATE	ALTERED CHECKED	R. RAJORE S. KUMAR	ADDITIONAL INFORMATION
06	26.12.13	APPROVED	MAK	05	6.3.2001	APPROVED	INDRAPAL	
NOTE-2 ADDED				DRAWING REDRAWN				STATUS OF DRAWING B
(DCA 32327)				(DCA 11431)				DISTRIBUTION OF PRINTS OC-1 SWM-3, TCX-1



TOOL LIST		
ITEM	TOOL NO.	DESCRIPTION
001	1498861	DRILL JIG

- NOTE : -
1. LIMITS OF HOLE A ( $\phi 30^{+0.240}_{+0.110}$ ) APPLICABLE FOR MIN.  $1/3^{rd}$  THICKNESS OF PLATE.
  2. MANUFACTURER IDENTIFICATION MARK TO BE PROVIDED AT LOCATION MARKED #.

BP9099432755	001	8TKx78x47 STRUCTURE STEEL PLATE	AA101808056	KG	0.240	
			AA10108		001	
REMARKS	ITEM NO	DESCRIPTION	MATL. CODE	UNIT	UNIT W.T.	
			MATL. SPECN.		QTY.	



HAKjr gsoh bysDV&hdYl fyfeVsM  
HAKsiky  
BHARAT HEAVY ELECTRICALS LTD.  
BHOPAL

uke NAME	qLrk SIGN	fnuakd DATE	osfj_ dh la; k NO. OF VAR.
cuk; k DRN	-Sd-		
tkapk CKD	MZG	-Sd-	24.01.82
vugaksmf APPD	BPN/RKG	-Sd-	25.07.82

foHAKx DEPT SWE	vu_ Vky_ uki dh js.kh UNTEL.DIMS. GR. M	vugikr SCALE 1: 1	HAKj fd_xk_ WEIGHT (KG.) 0.240	vis_M&kbZax dk lanHAZ REF. TO ASSY. DRG. 15211001537 15211001501	en d_ ITEM NO. 003 003	en la; k NO. OF ITEM 001
--------------------	---	-------------------------	--------------------------------------	---	---------------------------------	-----------------------------------

'Ah"AZDLE	LEVER	vkjs[A d-DRAWING NO. 4 521 10 01546	iquREV. 05
-----------	-------	--	---------------

IT MUST NOT BE USED DIRECTLY OR INDIRECTLY IN ANY WAY DETRIMENTAL TO THE INTEREST OF THE COMPANY

4HT40900593  
REF. DRG. NO.

SIGN. & DATE

INVENTORY NO.

REV. DATE

ALTERED

CHECKED

APPROVED

REV. 0.3

DATE

ALTERED

CHECKED

APPROVED

R.RAJORE

S.KUMAR

H.DRAPAL

ADDITIONAL INFORMATION

DRAWING REDRAWN

STATUS OF DRAWING

DISTRIBUTION OF PRINTS

B

OC-1, TCX-1

SWM-3,

VIEW OF STRIP FOR PUNCHING

2 HOLES  $\phi 8$

$\phi 10$

$\phi 12$

$\phi 16$

$\phi 20$

$\phi 24$

$\phi 30$

$\phi 38$

$\phi 45$

$\phi 51.5$

$\phi 60$

$\phi 75$

$\phi 80$

$\phi 90$

$\phi 100$

$\phi 110$

$\phi 120$

$\phi 130$

$\phi 140$

$\phi 150$

$\phi 160$

$\phi 170$

$\phi 180$

$\phi 190$

$\phi 200$

$\phi 210$

$\phi 220$

$\phi 230$

$\phi 240$

$\phi 250$

$\phi 260$

$\phi 270$

$\phi 280$

$\phi 290$

$\phi 300$

$\phi 310$

$\phi 320$

$\phi 330$

$\phi 340$

$\phi 350$

$\phi 360$

$\phi 370$

$\phi 380$

$\phi 390$

$\phi 400$

$\phi 410$

$\phi 420$

$\phi 430$

$\phi 440$

$\phi 450$

$\phi 460$

$\phi 470$

$\phi 480$

$\phi 490$

$\phi 500$

$\phi 510$

$\phi 520$

$\phi 530$

$\phi 540$

$\phi 550$

$\phi 560$

$\phi 570$

$\phi 580$

$\phi 590$

$\phi 600$

$\phi 610$

$\phi 620$

$\phi 630$

$\phi 640$

$\phi 650$

$\phi 660$

$\phi 670$

$\phi 680$

$\phi 690$

$\phi 700$

$\phi 710$

$\phi 720$

$\phi 730$

$\phi 740$

$\phi 750$

$\phi 760$

$\phi 770$

$\phi 780$

$\phi 790$

$\phi 800$

$\phi 810$

$\phi 820$

$\phi 830$

$\phi 840$

$\phi 850$

$\phi 860$

$\phi 870$

$\phi 880$

$\phi 890$

$\phi 900$

$\phi 910$

$\phi 920$

$\phi 930$

$\phi 940$

$\phi 950$

$\phi 960$

$\phi 970$

$\phi 980$

$\phi 990$

$\phi 1000$

$\phi 1010$

$\phi 1020$

$\phi 1030$

$\phi 1040$

$\phi 1050$

$\phi 1060$

$\phi 1070$

$\phi 1080$

$\phi 1090$

$\phi 1100$

$\phi 1110$

$\phi 1120$

$\phi 1130$

$\phi 1140$

$\phi 1150$

$\phi 1160$

$\phi 1170$

$\phi 1180$

$\phi 1190$

$\phi 1200$

$\phi 1210$

$\phi 1220$

$\phi 1230$

$\phi 1240$

$\phi 1250$

$\phi 1260$

$\phi 1270$

$\phi 1280$

$\phi 1290$

$\phi 1300$

$\phi 1310$

$\phi 1320$

$\phi 1330$

$\phi 1340$

$\phi 1350$

$\phi 1360$

$\phi 1370$

$\phi 1380$

$\phi 1390$

$\phi 1400$

$\phi 1410$

$\phi 1420$

$\phi 1430$

$\phi 1440$

$\phi 1450$

$\phi 1460$

$\phi 1470$

$\phi 1480$

$\phi 1490$

$\phi 1500$

$\phi 1510$

$\phi 1520$

$\phi 1530$

$\phi 1540$

$\phi 1550$

$\phi 1560$

$\phi 1570$

$\phi 1580$

$\phi 1590$

$\phi 1600$

$\phi 1610$

$\phi 1620$

$\phi 1630$

$\phi 1640$

$\phi 1650$

$\phi 1660$

$\phi 1670$

$\phi 1680$

$\phi 1690$

$\phi 1700$

$\phi 1710$

$\phi 1720$

$\phi 1730$

$\phi 1740$

$\phi 1750$

$\phi 1760$

$\phi 1770$

$\phi 1780$

$\phi 1790$

$\phi 1800$

$\phi 1810$

$\phi 1820$

$\phi 1830$

$\phi 1840$

$\phi 1850$

$\phi 1860$

$\phi 1870$

$\phi 1880$

$\phi 1890$

$\phi 1900$

$\phi 1910$

$\phi 1920$

$\phi 1930$

$\phi 1940$

$\phi 1950$

$\phi 1960$

$\phi 1970$

$\phi 1980$

$\phi 1990$

$\phi 2000$

$\phi 2010$

$\phi 2020$

$\phi 2030$

$\phi 2040$

$\phi 2050$

$\phi 2060$

$\phi 2070$

$\phi 2080$

$\phi 2090$

$\phi 2100$

$\phi 2110$

$\phi 2120$

$\phi 2130$

$\phi 2140$

$\phi 2150$

$\phi 2160$

$\phi 2170$

$\phi 2180$

$\phi 2190$

$\phi 2200$

$\phi 2210$

$\phi 2220$

$\phi 2230$

$\phi 2240$

$\phi 2250$

$\phi 2260$

$\phi 2270$

$\phi 2280$

$\phi 2290$

$\phi 2300$

$\phi 2310$

$\phi 2320$

$\phi 2330$

$\phi 2340$

$\phi 2350$

$\phi 2360$

$\phi 2370$

$\phi 2380$

$\phi 2390$

$\phi 2400$

$\phi 2410$

$\phi 2420$

$\phi 2430$

$\phi 2440$

$\phi 2450$

$\phi 2460$

$\phi 2470$

$\phi 2480$

$\phi 2490$

$\phi 2500$

$\phi 2510$

$\phi 2520$

$\phi 2530$

$\phi 2540$

$\phi 2550$

$\phi 2560$

$\phi 2570$

$\phi 2580$

$\phi 2590$

$\phi 2600$

$\phi 2610$

$\phi 2620$

$\phi 2630$

$\phi 2640$

$\phi 2650$

$\phi 2660$

$\phi 2670$

$\phi 2680$

$\phi 2690$

$\phi 2700$

$\phi 2710$

$\phi 2720$

$\phi 2730$

$\phi 2740$

$\phi 2750$

$\phi 2760$

$\phi 2770$

$\phi 2780$

$\phi 2790$

$\phi 2800$

$\phi 2810$

$\phi 2820$

$\phi 2830$

$\phi 2840$

$\phi 2850$

$\phi 2860$

$\phi 2870$

$\phi 2880$

$\phi 2890$

$\phi 2900$

$\phi 2910$

$\phi 2920$

$\phi 2930$

$\phi 2940$

$\phi 2950$

$\phi 2960$

$\phi 2970$

$\phi 2980$

$\phi 2990$

$\phi 3000$

$\phi 3010$

$\phi 3020$

$\phi 3030$

$\phi 3040$

$\phi 3050$

$\phi 3060$

$\phi 3070$

$\phi 3080$

$\phi 3090$

$\phi 3100$

$\phi 3110$

$\phi 3120$

$\phi 3130$

$\phi 3140$

$\phi 3150$

$\phi 3160$

$\phi 3170$

$\phi 3180$

$\phi 3190$

$\phi 3200$

$\phi 3210$

$\phi 3220$

$\phi 3230$

$\phi 3240$

$\phi 3250$

$\phi 3260$

$\phi 3270$

$\phi 3280$

$\phi 3290$

$\phi 3300$

$\phi 3310$

$\phi 3320$

$\phi 3330$

$\phi 3340$

$\phi 3350$

$\phi 3360$

$\phi 3370$

$\phi 3380$

$\phi 3390$

$\phi 3400$

$\phi 3410$

$\phi 3420$

$\phi 3430$

$\phi 3440$

$\phi 3450$

$\phi 3460$

$\phi 3470$

$\phi 3480$

$\phi 3490$

$\phi 3500$

$\phi 3510$

$\phi 3520$

$\phi 3530$

$\phi 3540$

$\phi 3550$

$\phi 3560$

$\phi 3570$

$\phi 3580$

$\phi 3590$

$\phi 3600$

$\phi 3610$

$\phi 3620$

$\phi 3630$

$\phi 3640$

$\phi 3650$

$\phi 3660$

$\phi 3670$

$\phi 3680$

$\phi 3690$

$\phi 3700$

$\phi 3710$

$\phi 3720$

$\phi 3730$

$\phi 3740$

$\phi 3750$

$\phi 3760$

$\phi 3770$

$\phi 3780$

$\phi 3790$

$\phi 3800$

$\phi 3810$

$\phi 3820$

$\phi 3830$

$\phi 3840$

$\phi 3850$

$\phi 3860$

$\phi 3870$

$\phi 3880$

$\phi 3890$

$\phi 3900$

$\phi 3910$

$\phi 3920$

$\phi 3930$

$\phi 3940$

$\phi 3950$

$\phi 3960$

$\phi 3970$

$\phi 3980$

$\phi 3990$

$\phi 4000$

$\phi 4010$

$\phi 4020$

$\phi 4030$

$\phi 4040$

$\phi 4050$

$\phi 4060$

$\phi 4070$

$\phi 4080$

$\phi 4090$

$\phi 4100$

$\phi 4110$

$\phi 4120$

$\phi 4130$

$\phi 4140$

$\phi 4150$

$\phi 4160$

$\phi 4170$

$\phi 4180$

$\phi 4190$

$\phi 4200$

$\phi 4210$

$\phi 4220$

$\phi 4230$

$\phi 4240$

$\phi 4250$

$\phi 4260$

$\phi 4270$

$\phi 4280$

$\phi 4290$

$\phi 4300$

$\phi 4310$

$\phi 4320$

$\phi 4330$

$\phi 4340$

$\phi 4350$

$\phi 4360$

$\phi 4370$

$\phi 4380$

$\phi 4390$

$\phi 4400$

$\phi 4410$

$\phi 4420$

$\phi 4430$

$\phi 4440$

$\phi 4450$

$\phi 4460$

$\phi 4470$

$\phi 4480$

$\phi 4490$

$\phi 4500$

$\phi 4510$

$\phi 4520$

$\phi 4530$

$\phi 4540$

$\phi 4550$

$\phi 4560$

$\phi 4570$

$\phi 4580$

$\phi 4590$

$\phi 4600$

$\phi 4610$

$\phi 4620$

$\phi 4630$

$\phi 4640$

$\phi 4650$

$\phi 4660$

$\phi 4670$

$\phi 4680$

$\phi 4690$

$\phi 4700$

$\phi 4710$

$\phi 4720$

$\phi 4730$

$\phi 4740$

$\phi 4750$

$\phi 4760$

$\phi 4770$

$\phi 4780$

$\phi 4790$

$\phi 4800$

$\phi 4810$

$\phi 4820$

$\phi 4830$

$\phi 4840$

$\phi 4850$

$\phi 4860$

$\phi 4870$

$\phi 4880$

$\phi 4890$

$\phi 4900$

$\phi 4910$

$\phi 4920$

$\phi 4930$

$\phi 4940$

$\phi 4950$

$\phi 4960$

$\phi 4970$

$\phi 4980$

$\phi 4990$

$\phi 5000$

$\phi 5010$

$\phi 5020$

$\phi 5030$

$\phi 5040$

$\phi 5050$

$\phi 5060$

$\phi 5070$

$\phi 5080$

$\phi 5090$

$\phi 5100$

$\phi 5110$

$\phi 5120$

$\phi 5130$

$\phi 5140$

$\phi 5150$

$\phi 5160$

$\phi 5170$

$\phi 5180$

$\phi 5190$

$\phi 5200$

$\phi 5210$

$\phi 5220$

$\phi 5230$

$\phi 5240$

$\phi 5250$

$\phi 5260$

$\phi 5270$

$\phi 5280$

$\phi 5290$

$\phi 5300$

$\phi 5310$

$\phi 5320$

$\phi 5330$

$\phi 5340$

$\phi 5350$

$\phi 5360$

$\phi 5370$

$\phi 5380$

$\phi 5390$

$\phi 5400$

$\phi 5410$

$\phi 5420$

$\phi 5430$

$\phi 5440$

$\phi 5450$

$\phi 5460$

$\phi 5470$

$\phi 5480$

$\phi 5490$

$\phi 5500$

$\phi 5510$

$\phi 5520$

$\phi 5530$

$\phi 5540$

$\phi 5550$

$\phi 5560$

$\phi 5570$

$\phi 5580$

$\phi 5590$

$\phi 5600$

$\phi 5610$

$\phi 5620$

$\phi 5630$

$\phi 5640$

$\phi 5650$

$\phi 5660$

$\phi 5670$

$\phi 5680$

$\phi 5690$

$\phi 5700$

$\phi 5710$

$\phi 5720$

$\phi 5730$

$\phi 5740$

$\phi 5750$

$\phi 5760$

$\phi 5770$

$\phi 5780$

$\phi 5790$

$\phi 5800$

$\phi 5810$

$\phi 5820$

$\phi 5830$

$\phi 5840$

$\phi 5850$

$\phi 5860$

$\phi 5870$

$\phi 5880$

$\phi 5890$

$\phi 5900$

$\phi 5910$

$\phi 5920$

$\phi 5930$

$\phi 5940$

$\phi 5950$

$\phi 5960$

$\phi 5970$

$\phi 5980$

$\phi 5990$

$\phi 6000$

$\phi 6010$

$\phi 6020$

$\phi 6030$

$\phi 6040$

$\phi 6050$

$\phi 6060$

$\phi 6070$

$\phi 6080$

$\phi 6090$

$\phi 6100$

$\phi 6110$

$\phi 6120$

$\phi 6130$

$\phi 6140$

$\phi 6150$

$\phi 6160$

$\phi 6170$

$\phi 6180$

$\phi 6190$

$\phi 6200$

$\phi 6210$

$\phi 6220$

$\phi 6230$

$\phi 6240$

$\phi 6250$

$\phi 6260$

$\phi 6270$

$\phi 6280$

$\phi 6290$

$\phi 6300$

$\phi 6310$

$\phi 6320$

$\phi 6330$

$\phi 6340$

$\phi 6350$

$\phi 6360$

$\phi 6370$

$\phi 6380$

$\phi 6390$

$\phi 6400$

$\phi 6410$

$\phi 6420$

$\phi 6430$

$\phi 6440$

$\phi 6450$

$\phi 6460$

$\phi 6470$

$\phi 6480$

$\phi 6490$

$\phi 6500$

$\phi 6510$

$\phi 6520$

$\phi 6530$

$\phi 6540$

$\phi 6550$

$\phi 6560$

$\phi 6570$

$\phi 6580$

$\phi 6590$

$\phi 6600$

$\phi 6610$

$\phi 6620$

$\phi 6630$

$\phi 6640$

$\phi 6650$

$\phi 6660$

$\phi 6670$

$\phi 6680$

$\phi 6690$

$\phi 6700$

$\phi 6710$

$\phi 6720$

$\phi 6730$

$\phi 6740$

$\phi 6750$

$\phi 6760$

$\phi 6770$

$\phi 6780$

$\phi 6790$

$\phi 6800$

$\phi 6810$

$\phi 6820$

$\phi 6830$

$\phi 6840$

$\phi 6850$

$\phi 6860$

$\phi 6870$

$\phi 6880$

$\phi 6890$

$\phi 6900$

$\phi 6910$

$\phi 6920$

$\phi 6930$

$\phi 6940$

$\phi 6950$

$\phi 6960$

$\phi 6970$

$\phi 6980$

$\phi 6990$

$\phi 7000$

$\phi 7010$

$\phi 7020$

$\phi 7030$

$\phi 7040$

$\phi 7050$

$\phi 7060$

$\phi 7070$

$\phi 7080$

$\phi 7090$

$\phi 7100$

$\phi 7110$

$\phi 7120$

$\phi 7130$

$\phi 7140$

$\phi 7150$

$\phi 7160$

$\phi 7170$

$\phi 7180$

$\phi 7190$

$\phi 7200$

$\phi 7210$

$\phi 7220$

$\phi 7230$

$\phi 7240$

$\phi 7250$

$\phi 7260$

$\phi 7270$

$\phi 7280$

$\phi 7290$

$\phi 7300$

$\phi 7310$

$\phi 7320$

$\phi 7330$

$\phi 7340$

$\phi 7350$

$\phi 7360$

$\phi 7370$

$\phi 7380$

$\phi 7390$

$\phi 7400$

$\phi 7410$

$\phi 7420$

$\phi 7430$

$\phi 7440$

$\phi 7450$

$\phi 7460$

$\phi 7470$

$\phi 7480$

$\phi 7490$

$\phi 7500$

$\phi 7510$

$\phi 7520$

$\phi 7530$

$\phi 7540$

$\phi 7550$

$\phi 7560$

$\phi 7570$

$\phi 7580$

$\phi 7590$

$\phi 7600$

$\phi 7610$

$\phi 7620$

$\phi 7630$

$\phi 7640$

$\phi 7650$

$\phi 7660$

$\phi 7670$

$\phi 7680$

$\phi 7690$

$\phi 7700$

$\phi 7710$

$\phi 7720$

$\phi 7730$

$\phi 7740$

$\phi 7750$

$\phi 7760$

$\phi 7770$

$\phi 7780$

$\phi 7790$

$\phi 7800$

$\phi 7810$

$\phi 7820$

$\phi 7830$

$\phi 7840$

$\phi 7850$

$\phi 7860$

$\phi 7870$

$\phi 7880$

$\phi 7890$

$\phi 7900$

$\phi 7910$

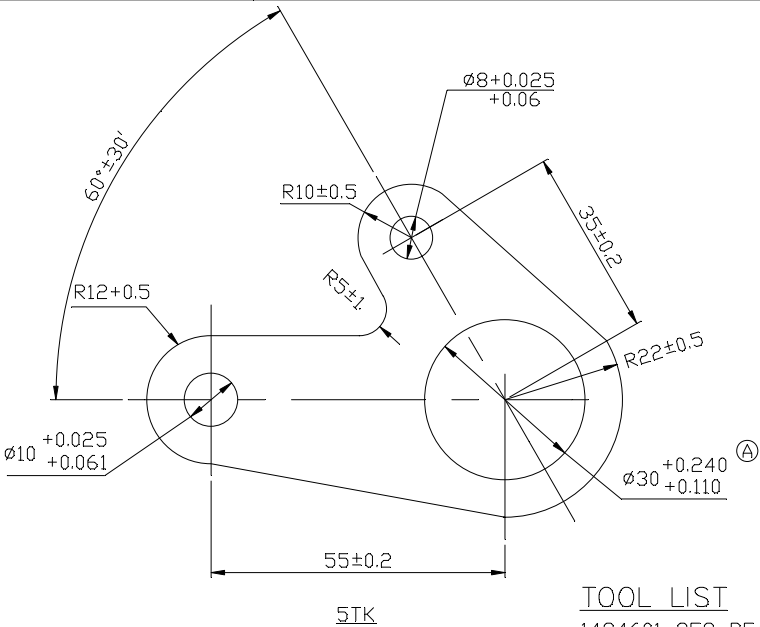
$\phi 79$

32

THE INFORMATION ON THIS DOCUMENT IS THE PROPERTY OF BHARAT HEAVY ELECTRICALS LIMITED IT MUST NOT BE USED DIRECTLY OR INDIRECTLY IN ANY WAY DETRIMENTAL TO THE INTEREST OF THE COMPANY

4HT40900508

REV.	DATE	ALTERED	REV.	DATE	ALTERED	Sd/-	ADDITIONAL INFORMATION
		CHECKED			CHECKED		
		APPROVED			APPROVED		
02	10.3.88		02	10.3.88			
REF. TO ASSY. DRG. ADDED				STATUS OF DRAWING B			
				DISTRIBUTION OF PRINTS □.C.-1 SWM-3 TCX-1			



TOOL LIST  
1494601-8E9 REAMER  
1494602-8E9 PLUG GAUGE  
1494603-10E9 REAMER  
1494604-10E9 PLUG GAUGE

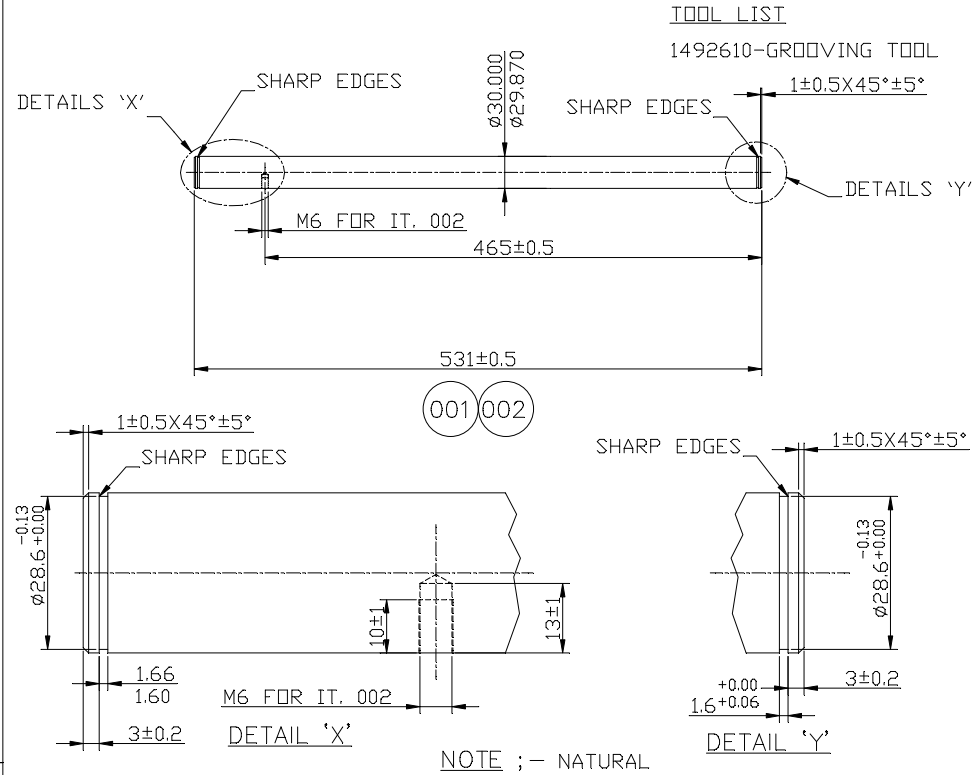
NOTES: -  
LIMITS OF HOLE A (Ø30+0.110)  
APPLICABLE FOR MIN. 1/3rd THICKNESS OF PLATE.

REMARKS	VAR. NO.	ITEM NO.	DESCRIPTION	STD	DRG. NO.-ITEM	A/C	UNIT	QTY.
	01	001	5TK. x 89 x62.3 STRUCTURE STEEL PLATE		AA1011808013 AA10108		KG.	220gms.

28 → CARD TYPE-3		28 → CARD TYPE-1		28 → CARD TYPE-2				
<div><div>बी एच ई एल</div><div>BHEL</div></div>		HAKjr gsoh bysDV&hdYl fyfeVsM HAKsiky BHARAT HEAVY ELECTRICALS LTD. BHOPAL		<div><div>uke NAME</div><div>cuk;k DRN</div><div>tkapk CKD</div><div>vugekstmr APPD</div></div> <div><div>glrk SIGN</div><div>M.Z.G.</div><div>Sd/-</div><div>R.K.G.</div></div> <div><div>fnugkd DATE</div><div>21.7.82</div><div>25.7.82</div></div>		<div><div>osfj. dh NO. OF VAR.</div><div>-</div></div>		
<div><div>foHAKx DEPT</div><div>SWE</div></div>	<div><div>wu_ Vky_ uki dh Js.kh UNTIL DIMS. GR.</div><div>M</div><div>AA0230208</div></div>	<div></div>	<div><div>vugikr SCALE</div><div>1:1</div></div>	<div><div>HAKj fd_xk_ WEIGHT (KG.)</div></div>	<div><div>vis_M&amp;kbZax dk lanHAZ REF. TO ASSY. DRG.</div><div>15217001606 IT.003</div></div>		<div><div>en d_ ITEM NO.</div></div>	<div><div>en la;k NO. OF ITEM</div><div>002</div></div>
<div><div>'Ah"AZDLE</div><div>LEVER</div></div>				<div><div>vkjs[A d-DRAWING NO.</div><div>45211001554</div></div>		<div><div>iquREV.</div><div>02</div></div>		

(ALL DIMENSIONS ARE IN mm)

REV. 05	DATE	ALTERED CHECKED APPROVED	REV. 06	DATE 05.01.17	ALTERED CHECKED APPROVED	JD SKG AKHIL	ADDITIONAL INFORMATION
DRG. REDRAWN.			GROOVE DIM. 28.600-28.470 CHANGED.			STATUS OF DRAWING B	
(DCA. NO. 34505)			(DCA 34506)			DISTRIBUTION O.C.-1 SWM-3 OF PRINTS TCX-1	



ST 943755	002	Ø30 x 531 LG. BGIGHT STEEL BAR.	AA 1010212150	KG.	2.947
ST 943754	001	Ø30 x 531 LG. BGIGHT STEEL BAR.	AA 1010212150	KG.	2.947
REMARKS	ITEM NO.	DESCRIPTION	MATL. CODE	UNIT	UNIT WT.
			MATL. SPCN.		QTY.
28 → CARD TYPE-3		28 → CARD TYPE-1	28 → CARD TYPE-2		
		HAKjr gsoh bysDV&hdYl fyfeVsM HAKsiky BHARAT HEAVY ELECTRICALS LTD. BHOPAL	uke NAME T.S.E.	qLrk SIGN Sd/-	fnuakd DATE 21.7.82
			tkapk CKD M.Z.G.	Sd/-	21.7.82
			vugakstf APPD B.P.N./R.K.G.	Sd/-	25.7.82
foHAKx DEPT SWE	vu_ Vky_ uki dh js.kh UNTEL.DIMS. GR. M AA0230208	vugikr SCALE 1.1	HAKj fd_xk_ WEIGHT (KG.)	vis_M&kbZax dk lanHAZ REF. TO ASSY. DRG. 15211001501 15213030526	en d_ ITEM NO. 001 001
dkm CODE 409					en la;k NO. OF ITEM 002
'Ah"AZDLE			vks[A d-DRAWING NO. 45211001555		iquREV. 06

File No. \_\_\_\_\_



4HT 409007720

2016940/2026-HEP-SWM20900  
THE INFORMATION ON THIS DOCUMENT IS THE PROPERTY OF BHARAT HEAVY ELECTRICALS LIMITED  
IT MUST NOT BE USED DIRECTLY OR INDIRECTLY IN ANY WAY DETRIMENTAL TO THE INTEREST OF THE COMPANY

INVENTORY NO.

SIGN. & DATE

FILE NAME

45211001574-R02-S01

REV.	DATE	ALTERED	MKN	REV.	DATE	ALTERED	ADDITIONAL INFORMATION
02	11.12.13	CHECKED	AKHIL	01	5.10.03	CHECKED	—
		APPROVED	MAK			APPROVED	
NOTE ADDED.				DRG. REDRAWN & SHEET 02 ADDED.			
(DCA. NO. 32296)				(DCA.20222)			
TOOL LIST :- 1492610 : GROOVING TOOL 1498750 : DRILL JIG				ASSY. REF. :- FOR IT. 002 : 1 521 10 01502-001 NOTE:- SUPPLIER IDENTIFICATION MARKS TO BE PUT ANYWHERE ON NON-MACHINED SURFACE.			
BP 9099431767		002		Ø30 x 751 BRIGHT STEEL BAR		4.169	
BP 9099431759		001		Ø30 x 615 BRIGHT STEEL BAR		3.414	
65		7525 2729		58 59 34		45 55 56 58 65	
REMARKS		ITEM NO.		DESCRIPTION		UNIT WT.	
				MATL. CODE		UNIT	
				MATL. SPCN.		QTY.	
28 → CARD TYPE-3		28 → CARD TYPE-1		28 → CARD TYPE-2			
		HAKjr gsoh bysDV&hdYl fyfeVsM HAKsiy BHARAT HEAVY ELECTRICALS LTD. BHOPAL		uke NAME T.S.E sd/-		osfj. dh No. OF VAR.	
foHAKx DEPT SWE		vu_ Vky_ uki dh Js.kh UNTIL DMS. GR.		vuglkr SCALE 1:5		en d_— ITEM NO.	
dkSM CODE 409		DIM C/M./F		HAKj fd_xk— WEIGHT (KG.)		en laj;k No. OF ITEM	
'Ah"AZdC		SHAFT		vis_M&kbZax dk lanHAZ REF. TO ASSY. DRG.		en d_— ITEM NO.	
				1 521 10 01502		001	
				vkjs[A d—B&GNG NO.		ikuREV.	
				4 521 10 01574		02	
				i="B d—S&T. No. 01		i="Bksa dh laj;k OF SHT. 02	

REV.	DATE	ALTERED	MKN	REV.	DATE	ALTERED	ADDITIONAL			
02	11.12.13	CHECKED	AKHIL	01	5.10.03	CHECKED	INFORMATION —			
		APPROVED	MAK			APPROVED				
NOTE ADDED.				DRG. REDRAWN			STATUS OF DRAWING			
(DCA. NO. 32296)				(DCA.20222)			DISTRIBUTION OF PRINTS	SWE	SWM	TCX
								1	3	1

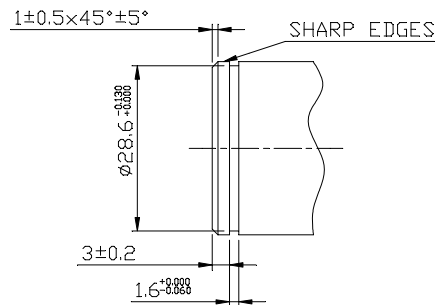
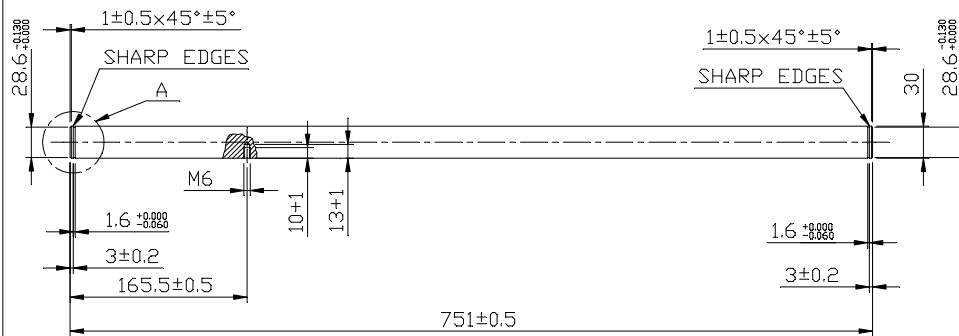
NOTE: -  
SUPPLIER IDENTIFICATION MARKS TO BE  
PUT ANYWHERE ON NON-MACHINED SURFACE.

TOOL LIST :-

1492610	: GROOVING TOOL
1498750	: DRILL JIG


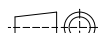
ASSY. REF. :-

FOR IT. 002 : 1 521 10 01502-001



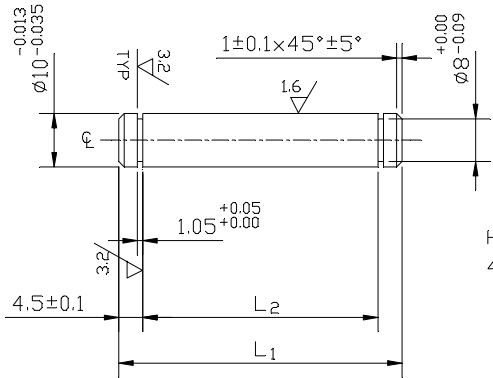
VIEW-A

FOR B.O.M REFER DRG. NO. 4 521 10 01574 SH-01

		HAKjr gsoh bysDV&hdYl fyfeVsM HAKsiky BHARAT HEAVY ELECTRICALS LTD. BHOPAL		<table border="1"> <tr> <th>uke NAME</th> <th>clrk SIGN</th> <th>fnugkd DATE</th> <th>osfj d la;f k Nl; OF VAR.</th> </tr> <tr> <td>cuk;k DRN</td> <td>T.S.E</td> <td>sd/-</td> <td>-</td> </tr> <tr> <td>kpep CKB</td> <td>M.Z.G</td> <td>sd/-</td> <td>25.9.82</td> </tr> <tr> <td>vu&amp;ksm APPD</td> <td>BPN/RKG</td> <td>sd/-</td> <td>13.10.82</td> </tr> </table>		uke NAME	clrk SIGN	fnugkd DATE	osfj d la;f k Nl; OF VAR.	cuk;k DRN	T.S.E	sd/-	-	kpep CKB	M.Z.G	sd/-	25.9.82	vu&ksm APPD	BPN/RKG	sd/-	13.10.82
uke NAME	clrk SIGN	fnugkd DATE	osfj d la;f k Nl; OF VAR.																		
cuk;k DRN	T.S.E	sd/-	-																		
kpep CKB	M.Z.G	sd/-	25.9.82																		
vu&ksm APPD	BPN/RKG	sd/-	13.10.82																		
foHAKx DEPT SWE	vu_ Vky_ uki dh js.kh UNTL.DIMS. GR.		vuqjkr SCALE 1: 5	HAKj fd_xk-- WEIGHT (K.G.)	<table border="1"> <tr> <th>vis_M&amp;kbZax REF. TO ASSY. DRG.</th> <th>en d-- ITEM NO.</th> <th>en la;f k Nl; OF ITEM</th> </tr> <tr> <td>1 521 10 01502</td> <td>001</td> <td>-</td> </tr> </table>	vis_M&kbZax REF. TO ASSY. DRG.	en d-- ITEM NO.	en la;f k Nl; OF ITEM	1 521 10 01502	001	-										
vis_M&kbZax REF. TO ASSY. DRG.	en d-- ITEM NO.	en la;f k Nl; OF ITEM																			
1 521 10 01502	001	-																			
'Ah"AZaC <div style="text-align: center;">SHAFT</div>					<table border="1"> <tr> <th>vk js[A d--B&amp;GNG NO.</th> <th>iquREV.</th> </tr> <tr> <td>4 521 10 01574</td> <td>02</td> </tr> </table>	vk js[A d--B&GNG NO.	iquREV.	4 521 10 01574	02												
vk js[A d--B&GNG NO.	iquREV.																				
4 521 10 01574	02																				
HEP-SCRoSWM(Misc)/104/2026-HEP-SWM20900 (Computer No. 302290)																					

THE INFORMATION ON THIS DOCUMENT IS THE PROPERTY OF BHARAT HEAVY ELECTRICALS LIMITED  
IT MUST NOT BE USED DIRECTLY OR INDIRECTLY IN ANY WAY DETRIMENTAL TO THE INTEREST OF THE COMPANY

REV. 04	DATE 7.12.05	ALTERED CHECKED APPROVED	REV. 03	DATE 28.8.01	ALTERED CHECKED APPROVED	ADDITIONAL INFORMATION
LENGTH OF ITEM 002 WAS 53 IN BOM AND 55 IN DRAWING.CORRECTED IN BOM. (DCA NO. 23368)			DRG. REDRAWN. BP CODE 12 DIGIT ADDED. M/C SYMBOL CHANGED (DCA NO. 10895)			STATUS OF DRAWING
						DISTRIBUTION OF PRINTS
						SWE
						SWM
						TCX
						1
						3
						1



HARDEN AND TEMPER TO  
480±30 HV (48±2 HRC)

FINISH :- NATURAL

TOOL LIST :- 1492689- GROOVING TOOL

ITEM	L <sub>1</sub> ±0.3	L <sub>2</sub> ±0.3
001	53	44
002	55	46
003	63	54

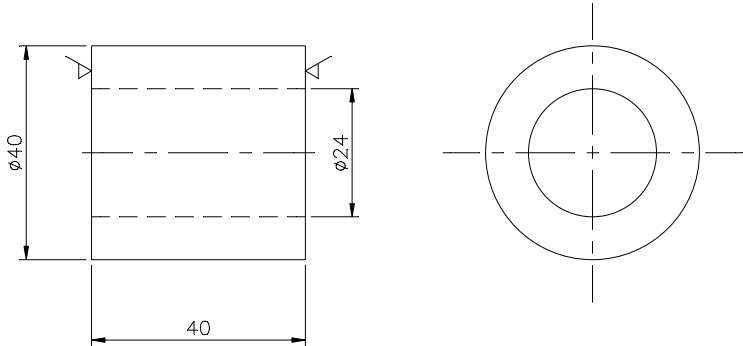
NOTE :-

- 1) CARBON SHALL NOT BE LESS THAN 0.2 PERCENT.
- 2) ALTERNATIVELY USE MATERIAL TO EN 56D, BS1970.
- 3) FINAL DIMENSIONS TO BE ACHIEVED AFTER  
ACHIEVING SPECIFIED HARDNESS.

REF. DRG. NO.	BP9099430337	003	12 DIA×63 LG. STAINLESS STEEL BAR	AA 1070221074	KG.	0.056
				AA 10721		001
	BP9099430329	002	12 DIA×55 LG. STAINLESS STEEL BAR	AA 1070221074	KG.	0.0489
				AA 10721		001
SIGN. & DATE	BP9099430310	001	12 DIA×53 LG. STAINLESS STEEL BAR	AA 1070221074	KG.	0.047
				AA 10721		001
	REMARKS	ITEM NO.	DESCRIPTION	MATL. CODE	UNIT	UNIT WT.
				MATL. SPCN.		QTY.
INVENTORY NO.	28 → CARD TYPE-3		28 → CARD TYPE-1		28 → CARD TYPE-2	
	HAKjr gsoh bysDV&hdYl fyfeVsM HAKsiky BHARAT HEAVY ELECTRICALS LTD. BHOPAL		vuklkr SCALE 1:1		vis_M&kbZax dk lanHAZ REF. TO ASSY. DRG. 35211001500	
	'Ah"AZDLE		vkjs[A d-DRAWING NO. 45211001595		en d-- ITEM NO. 006	
	PIN		i="B d-- No. 01		i="Bksa dh la[ No. 01	

THE INFORMATION ON THIS DOCUMENT IS THE PROPERTY OF BHARAT HEAVY ELECTRICALS LIMITED  
IT MUST NOT BE USED DIRECTLY OR INDIRECTLY IN ANY WAY DETRIMENTAL TO THE INTEREST OF THE COMPANY

REV. 03	DATE 15.4.06	ALTERED CHECKED APPROVED HRP	REV. 02	DATE 9.3.86	ALTERED CHECKED APPROVED	Sd/- Sd/- Sd/-	ADDITIONAL INFORMATION
DRG. REDRAWN			STYLE NO. ADDED.			STATUS OF DRAWING	
(DCA NO. 25459)						DISTRIBUTION OF PRINTS □.C.-1 SWM-3 TCX-1	



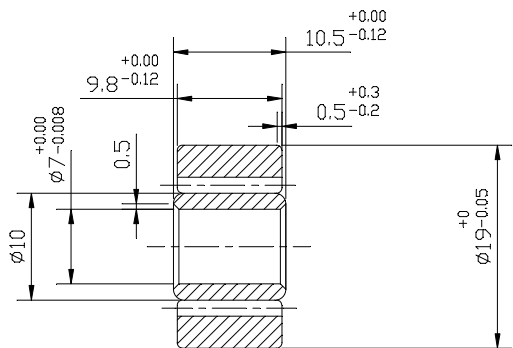
FINISH :- NATURAL

BP909 9436688	001	Ø40x40 LG BRT. S. BAR	AA1010212206 AA10112	KG	- 001
REMARKS	ITEM NO.	DESCRIPTION	MATL. CODE	UNIT	UNIT WT.
			MATL. SPCN.		QTY.

28 → CARD TYPE-3		28 → CARD TYPE-1		28 → CARD TYPE-2			
		HAKjr gsoh bysDV&hdYl fyfeVsM HAKsiky BHARAT HEAVY ELECTRICALS LTD. BHOPAL		uke NAME CHU	qLrk- SIGN Sd/-	fnuakd DATE -	osfj_ dh la; k NO. OF VAR.
tkapK CKD MZG		vugakstmr APPD BPN/RKG		Sd/-		26.10.82	-
Sd/-		Sd/-		Sd/-		29.10.82	-
foHAKx DEPT SWE	vu_ Vky_ uki dh Js.kh UNTEL.DIMS. GR. M AA0230208		vugikr SCALE 1:1	HAKj fd_xk- WEIGHT (KG.) -	vis_M&kbZax dk lanHAZ REF. TO ASSY. DRG. 35211001523	en d- ITEM NO. 001	en la; k NO. OF ITEM 001
'Ah"AZBUE HUB					vkjs[A d-DRWING NO. 4 521 10 01612		iquREV. 03

THE INFORMATION ON THIS DOCUMENT IS THE PROPERTY OF BHARAT HEAVY ELECTRICALS LIMITED  
IT MUST NOT BE USED DIRECTLY OR INDIRECTLY IN ANY WAY DETRIMENTAL TO THE INTEREST OF THE COMPANY

REV. 04	DATE 13.03.13	ALTERED	ABHISHEK	REV. 03	DATE 27.09.12	ALTERED	PARE	ADDITIONAL INFORMATION				
		CHECKED	RG			CHECKED	RG					
		APPROVED	MAK			APPROVED	MAK					
CHAMFERING REMOVED FROM DIM Ø19				MODEL & MAKE UPDATED WEIGH ADDED.				STATUS OF DRAWING				
(DCA NO. 31755 )				(DCA NO. 31347 )				DISTRIBUTION		SWE	SWM	TCX
								OF PRINTS		1	3	1



LOAD CAPACITY :- STATIC LOAD C = 700 KG.  
DYNAMIC LOAD CD = 730 KG.

RADIAL LOAD :- CW = 510 KG.  
CDW = 610 KG.

RADIAL CLEARANCE :- 0.005 TO 0.024

NOTE :-

1. THE BEARING CONTAINS 24 NEEDLE ROLLERS OF Ø1.5x9.8LG. TYPE G2.
2. THE BEARING SHALL BE GREASED WITH ROLLER BEARING GREASE <NLGI2> AS PER DIN 51825
3. THE BEARING IS EQUIVALENT OF NEEDLE ROLLER BEARING TYPE  
1) STUTZROLLE F87773-1 ST7x19x10.5 WITH INNER RING 7x10x10.5 OF M/S INA.  
2) STUTZROLLE F237522 A00 ST7x19x10.5 OF M/S INA.

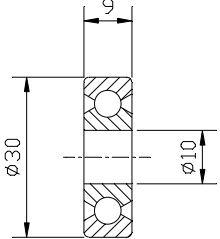

BP9029432551	001	NEEDLE ROLLER BEARING				0.018
			SG 12720			001
REMARKS	ITEM NO.	DESCRIPTION	MATL. CODE	UNIT	UNIT WT.	
			MATL. SPCN.		QTY.	

SIGN. & DATE	28 → CARD TYPE-3		28 → CARD TYPE-1		28 → CARD TYPE-2			
	<div><div><div>बीएचईएल</div><div>BHEL</div></div></div>		HAKjr gsoh bysDV&hdYl fyfeVsM HAKsiky BHARAT HEAVY ELECTRICALS LTD. BHOPAL		uke NAME C.H.U.	gLRk SIGN Sd/-	fnuakd DATE 7-12-82	osfj. dh la;k NO. OF VAR.
INVENTORY NO.	foHAKx DEPT SWE	vu_ Vky_ uki dh Js.kh UNTIL DMS. GR. M		vuqikr SCALE 1:1	HAKj fd_xk_ WEIGHT (KG.)	vis_M&kbZax dk lanHAZ REF. TO ASSY. DRG. 35211001556	en d_ ITEM NO. 074	en la;k ITEM 001
	dksM CODE 409	AA 0230208						
	'Ah"AZ					vkjs[A d-DRAWING NO. 45211001621	iquOREV. 04	
BEARING SUPPORT ROLLER								
No. HEP-SCRoSWM(Misc)/104/2026-HEP-SWM20900 (Computer No. 302290)								
					i="B d-SHT. No. 01		i="Bksa dh la;k OF SHT. 01	

41

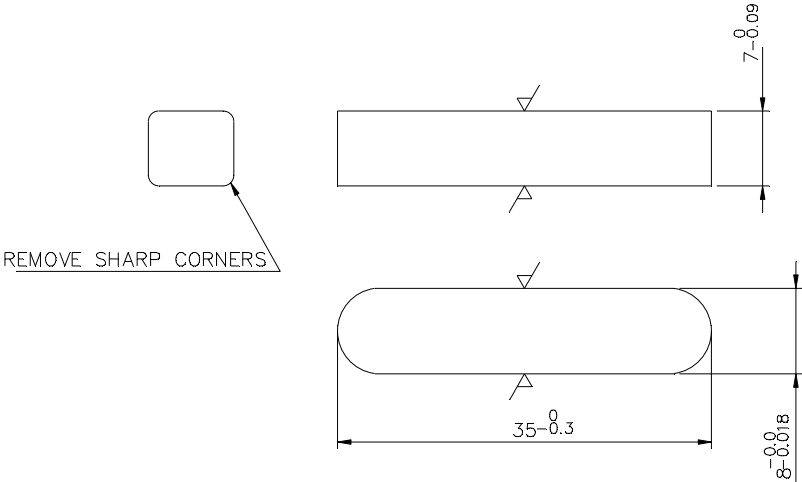
52110\45211001633-R02-S01

THE INFORMATION ON THIS DOCUMENT IS THE PROPERTY OF BHARAT HEAVY ELECTRICALS LIMITED  
IT MUST NOT BE USED DIRECTLY OR INDIRECTLY IN ANY WAY DETRIMENTAL TO THE INTEREST OF THE COMPANY

REV. 03	DATE 26/09	ALTERED CHECKED APPROVED	REV. 02	DATE 23/02	ALTERED CHECKED APPROVED	ADDITIONAL INFORMATION		
-NOTE-1 UPDATED TO ADD FAG MAKE AS PER SG12701. -DCA NO. CORRECTED. <DCA NO. 11318>			DRG. REDRAWN. <DCA NO. 10966>			STATUS OF DRAWING		
						DISTRIBUTION OF PRINTS	SWE 1	SWM 3
REV. 03	DATE 23.03.2002	ALTERED CHECKED APPROVED DRG. REDRAWN. <DCA NO. 11318>	<div></div> <p>NOTE : - 1) THE BALL BEARING IS SINGLE ROW DEEP GROOVE BALL BEARING TYPE 6200-2Z OF M/S. SKF, M/S. INA OR M/S FAG MAKES.</p> <p>2) THE BALL BEARING SHALL COMPLY WITH DIN-625.</p> <p>3) THESE BEARING ARE WITH TWO SHIELDS &lt;METAL&gt;</p>					
BP9029432721		001	BALL BEARING TYPE 6200-2Z		SG 12701		KG.	0.075
REMARKS		ITEM NO.	DESCRIPTION		MATL. CODE		UNIT	UNIT WT.
					MATL. SPCN.			QTY.
28 → CARD TYPE-3		28 → CARD TYPE-1		28 → CARD TYPE-2				
		HAKjr gsoh bysDV&hdYl fyfeVsM HAKsiky BHARAT HEAVY ELECTRICALS LTD. BHOPAL		uke NAME B.L.K.		qLrk- SIGN Sd/-	fnuakd DATE 23.12.82	osfj_ dh la; k NO. OF VAR.
				tkaprk CKD M.Z.G.		Sd/-	23.12.82	-
				vuqekstfr APPD B.P.N./R.K.G.		Sd/-	01.01.83	
foHAKx DEPT SWE		vu_ Vky_ uki dh Js.kh UNTIL DIMS. GR. M AA 0230208		vuqkr SCALE 2:1		HAKj fd_xk- WEIGHT (KG.) -		vis_M&kbZax dk lanHAZ REF. TO ASSY. DRG. 35211001560
dkm CODE 409						en d- ITEM NO. 036		en la; k NO. OF ITEM 001
'Ah"AZ		BALL BEARING		vkjs[A d-DRAWING NO. 45211001633		iquREV. 03		
File No. HEP-SCRoSWM(Misc)/104/2026-HEP-SWM20900 (Computer No. 302290)				i="B d-SHT. No. 01		i="Bksa dh la[NO OF SHT. 01		

THE INFORMATION ON THIS DOCUMENT IS THE PROPERTY OF BHARAT HEAVY ELECTRICALS LIMITED  
IT MUST NOT BE USED DIRECTLY OR INDIRECTLY IN ANY WAY DETRIMENTAL TO THE INTEREST OF THE COMPANY

REV. 03	DATE 6.4.06	ALTERED CHECKED APPROVED HRP	REV. 01	DATE 2.12.04	ALTERED CHECKED APPROVED	Sd/- Sd/- Sd/-	ADDITIONAL INFORMATION
DRG. REDRAWN.			TOOL NO. 1564081 ADDED.			STATUS OF DRAWING	
(DCA NO. 25451)						DISTRIBUTION OF PRINTS	
						□.C.-1 SWM-3 TCX-1	



TOOL NO. 1564081 (MILLING BLOCK)

BP9099434022	001	8x9x35 LG. CARBON STEEL BAR		BP10399	Kg.	0.070
REMARKS	ITEM NO.	DESCRIPTION	STD	MATL. CODE	C	UNIT WT.
				MATL. SPCN.	A	QTY.

28 → CARD TYPE-3      28 → CARD TYPE-1      28 → CARD TYPE-2

		HAKjr gsoh bysDV&hdYl fyfeVsM HAKsiky BHARAT HEAVY ELECTRICALS LTD. BHOPAL	uke NAME	qLrk- SIGN	fnuakd DATE	osfj_ dh la; k NO. OF VAR.
			cuk;k DRN	MP	Sd/-	26.5.83
			tkapk CKD	ASN	Sd/-	29.5.83
			vugaksfmr APPD	KGB	Sd/-	1.6.83

foHAKx DEPT SWE	vu_ Vky_ uki dh js.kh UNTEL.DIMS. GR. M AA0230208		vuqikr SCALE 2: 1	HAKj fd_xk- WEIGHT (KG.) 0.018	vis_M&kbZax dk lanHAZ REF. TO ASSY. DRG. 15211030501	en d- ITEM NO. 055	en la; k NO. OF ITEM 001
--------------------	--	--	-------------------------	--------------------------------------	--	--------------------------	-----------------------------------

'Ah"AZ00E				vkjs[A d-DRAWING NO. 4 521 10 01649			iquREV. 03
-----------	--	--	--	--	--	--	---------------

KEY