

4 HT 40900567
REF. DRG. NO.

SIGN. & DATE

INVENTORY NO.

[illegible]

1. SUITABLE TOOLS TO BE USED FOR REAMER, DRILL ETC. TO MEET PARAMETERS.

2. TENSILE STRENGTH – 350N/M²(MIN)
HARDNESS – 100HB (MIN)
CONDUCTIVITY AT 20°C – 80% IACS (MIN)
ALL OTHER PARAMETERS AS PER BP19898

A) SILVER PLATING ON COMPLETE SURFACE AREA SHALL BE DONE AS PER SG14610. SILVER PLATING THICKNESS SHALL BE MINIMUM 5 MICRON AND AREA SHALL BE 150 SQ. CM. FOR ITEM-001

B) 5% SAMPLE SHALL BE COMPULSORILY CHECKED FOR PLATING THICKNESS AFTER RECEIPT AT BHOPAL WORKS.

C) ADHESION AND ANTI-TARNISHING SHALL ALSO BE CHECKED.

D) SUPPLIER LOGO & PO NO. TO BE AT LOCATIONS MARKED ###. STICKER IS NOT ACCEPTABLE.

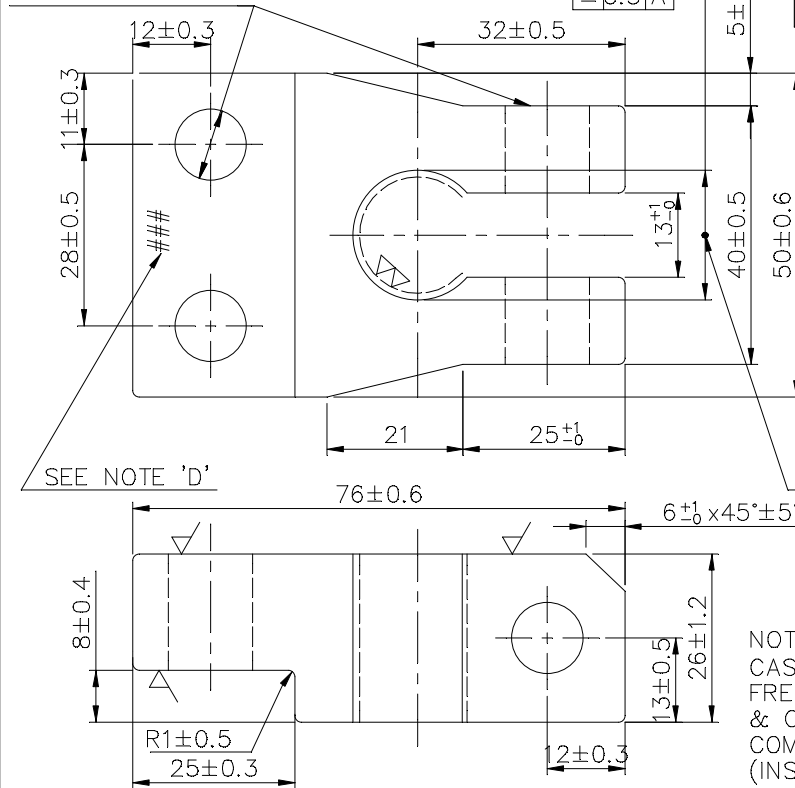
RADIUS = $2.5^{+0.0}_{+0.5}$
(WHEN NOT SHOWN)

, ENGINEER(PKA)-MWX35702-HEP, ENGINEER, HEP-HEAVY ELECTRICALS PLANT (HEP) on 22/04/2026 03:43 pm

THE INFORMATION ON THIS DOCUMENT IS THE PROPERTY OF BHARAT HEAVY ELECTRICALS LIMITED
IT MUST NOT BE USED DIRECTLY OR INDIRECTLY IN ANY WAY DETRIMENTAL TO THE INTEREST OF THE COMPANY

REV.	DATE	ALTERED CHECKED	AKN	REV.	DATE	ALTERED CHECKED	MKN	REV.	DATE	ALTERED CHECKED	S.D.MISHRA	ADDITIONAL INFORMATION
15	21.03.14	APPROVED	BPC	13	23.04.12	APPROVED	AKHIL	14	28.01.14	APPROVED	MAK	
IMPORTANT NOTES (CTQ) UPDATED.				DIMENSION 21 ADDED (DCA. NO. 31044)				-TOLERANCE 26±1.2 WAS 26±0.4 -DIM.18±0.4 DELETED -DIM. 8±0.4 ADDED. -RADIUS 0.5±0.1 WAS 2.5±0.5 (DCA. NO. 32375)				STATUS OF DRAWING
(DCA. NO. 32468)												DISTRIBUTION OC-1, SWM-3, OF PRINTS TCX-1

3 HOLES Ø11 ±0.05 CAST



IMPORTANT NOTES (CTQ)
A) SILVER PLATING ON COMPLETE SURFACE AREA SHALL BE DONE AS PER SG14610. SILVER PLATING THICKNESS SHALL BE MINIMUM 5 MICRON AND AREA SHALL BE 150 SQ. CM.
B) 5% SAMPLE SHALL BE COMPULSORILY CHECKED FOR PLATING THICKNESS AFTER RECEIPT AT BHOPAL WORKS.
C) ADHESION AND ANTI-TARNISHING SHALL ALSO BE CHECKED.
D) SUPPLIER LOGO & PO NO. TO BE PUNCHED AT LOCATIONS MARKED ###STICKER IS NOT ACCEPTABLE.

TOOL LIST

1498723-SLOT DRILL (13Ø)
1498724-20E9 REAMER
1498725-20E9 PLUG GAUGE
1498726-27E9 REAMER
1498727-27E9 PLUG GAUGE
1492658-30E9 REAMER
1492659-30E9 PLUG GAUGE
1564167-32E9 REAMER
1564168-32E9 PLUG GAUGE

WHEN NOT SHOWN
RADIUS =0.5±0.1

ITEM 001=Ø20^{+0.040}/_{+0.092}
ITEM 002=Ø27^{+0.040}/_{+0.092}
ITEM 003=Ø30^{+0.040}/_{+0.092}
ITEM 004=Ø32^{+0.040}/_{+0.092}

NOTE;-
CASTING SHALL BE SOUND &
FREE FROM POROSITY, SHRINKAGE
& OTHER DEFECTS & SHALL
COMPLY WITH BS 1400
(INSPECTION CODE C&T)

ST 946181	004	CROM CPR GRAVITY DIE CASTING (AS PER BS1400-1985-CCI-TF) GROUP B ALLOY OF CPR. CROM.	SG 12713	0.6 KG.		
ST 943809	003	CROM CPR GRAVITY DIE CASTING (AS PER BS1400-1985-CCI-TF) GROUP B ALLOY OF CPR. CROM.	SG 12713	0.6 KG.		
ST 943138	002	CROM CPR GRAVITY DIE CASTING (AS PER BS1400-1985-CCI-TF) GROUP B ALLOY OF CPR. CROM.	SG 12713	0.6 KG.		
ST 943137	001	CROM CPR GRAVITY DIE CASTING (AS PER BS1400-1985-CCI-TF) GROUP B ALLOY OF CPR. CROM.	SG 12713	0.6 KG.		
REMARKS	ITEM NO	DESCRIPTION	STD.	MATL. CODE	A/C	UNIT
				MATL. SPECN.		QTY.



HAKjr gsob bysDV&hdYl fyfeVsM
HAKsiky
BHARAT HEAVY ELECTRICALS LTD.
BHOPAL

uke NAME	qLrk- SIGN	fnuakd DATE	osfj- dh la[k NO. OF VAR.
cuk;k DRN	sd/-		
tkapk CKD	sd/-		
vugeksfr APPD	sd/-		
vis_M&kbZax dk lanHAZ REF. TO ASSY. DRG.		en d- ITEM NO. 001 002	en la[k NO. OF ITEM 004
35211001534			
vkjs[A d-DRAWING NO.			iqu@REV.
4 521 10 0 1551			15
i="B d-SHT. No. 01			i="Bksa dh la[k NO. OF SHT. 01

foHAKx DEPT SWE	vu- Vky- uki dh Js.kh UNTDL.DIMS. GR.	vuglkr SCALE 1:1	HAKj fd_xk- WEIGHT (K.G.)
dkSM CODE 409			

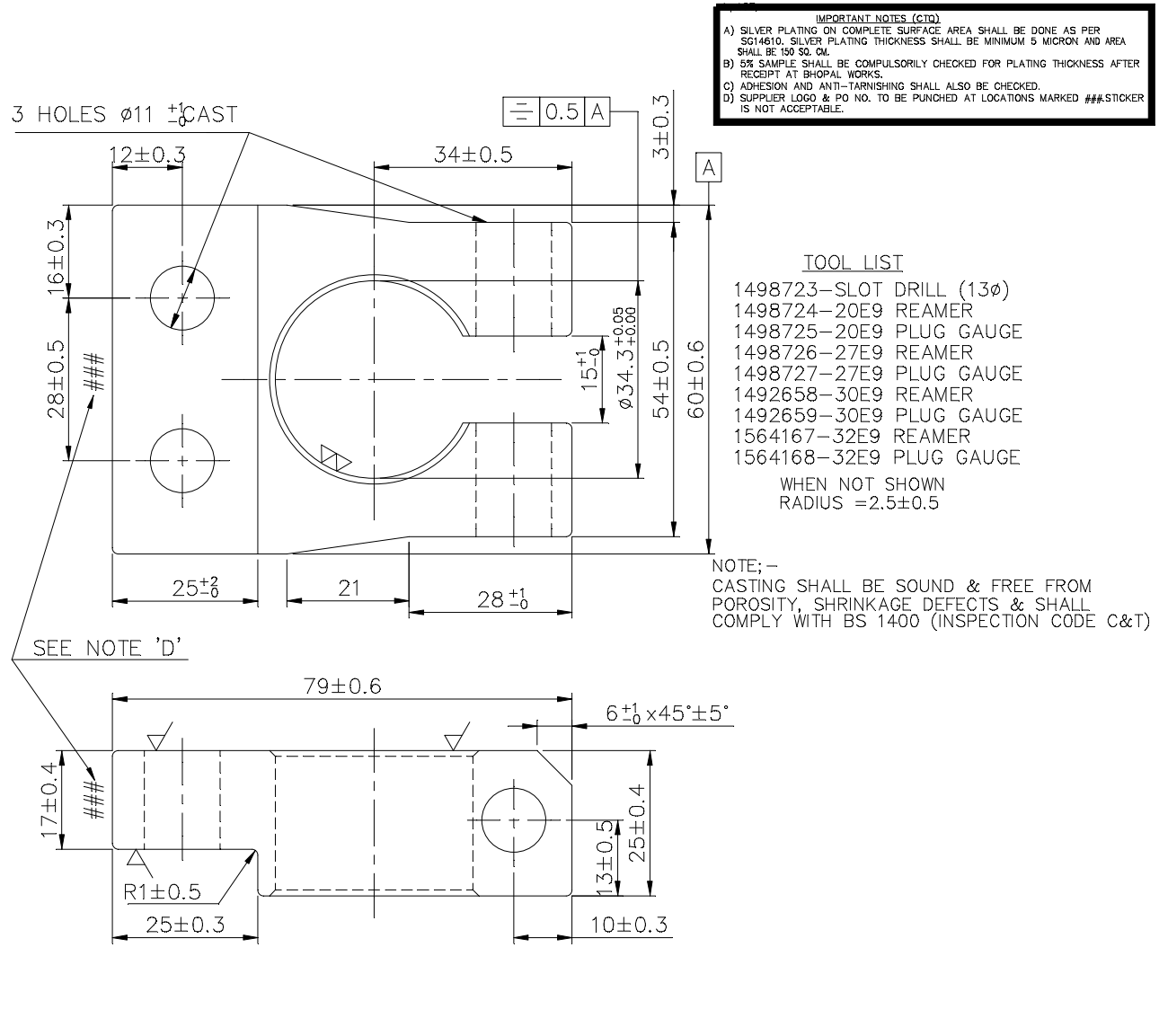
'Ah"AZ@E

TERMINAL

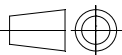
12

THE INFORMATION ON THIS DOCUMENT IS THE PROPERTY OF BHARAT HEAVY ELECTRICALS LIMITED
IT MUST NOT BE USED DIRECTLY OR INDIRECTLY IN ANY WAY DETRIMENTAL TO THE INTEREST OF THE COMPANY

REV.	DATE	ALTERED	SKG	REV.	DATE	ALTERED	AKN	ADDITIONAL
04	23.05.16	CHECKED	AKHIL	03	21.03.14	CHECKED	BPC	INFORMATION
		APPROVED	AD			APPROVED	HRP	
- SUPPLIER LOGO LOCATION UPADTED				IMPORTANT NOTES (CTQ) UPDATED.				STATUS OF DRAWING
(DCA. NO. 33893)				(DCA. NO. 32470)				DISTRIBUTION OF PRINTS OC-1, SWM-3, TCX-1



BP9309124466	001	CROM CPR GRAVITY DIE CASTING (AS PER BS1400-1985-CCI-TF) GROUP B ALLOY OF CPR. CROM.	SG 12713	0.6 KG.		
REMARKS	ITEM NO	DESCRIPTION	MATL. CODE	UNIT	UNIT WT.	U.S. ZONE
			MATL. SPECN.		QTY.	

<div><div>बीएचईएल</div><div>BHEL</div></div>				HAKjr gsob bysDV&hdYl fyfeVsM HAKsiky BHARAT HEAVY ELECTRICALS LTD. BHOPAL		uke NAME		gLrk SIGN		fnuakd DATE		osfj_ dh laj;k NO. OF VAR.						
foHAKx DEPT SWE		vu_ Vky_ uki dh Js.kh UNTOL.DIMS. GR.				vuqikr SCALE 1:1		HAKj fd_xk_ WEIGHT (K.G.)		vis_M&kbZax dk lanHAZ REF. TO ASSY. DRG. 35211001534		en d_ ITEM NO. 001 002		en laj;k NO. OF ITEM 001				
dkSM CODE 409																		
'Ah"AZ@E									vkjs[A d-DRAWING NO. 45211001784						iqu@REV. 04			
TERMINAL									13		i="B d_ SHT. No. 01						i="Bksa dh laj;k NO. OF SHT. 01	