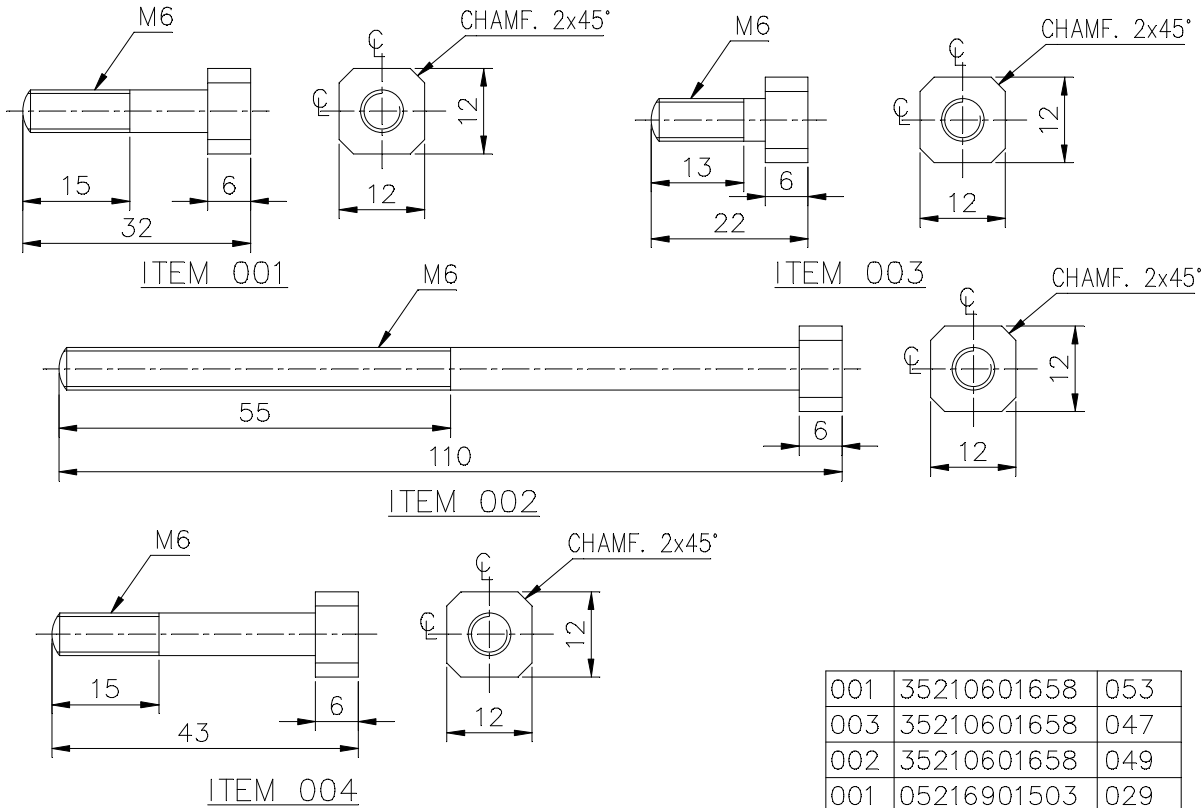


64520/2024/HEP-SWM20900

REV.	DATE	ALTERED		
		CHECKED	03	11.04.03
		CHECKED		
DRG. REDRAWN.				
(DCA 12290)				

ADDITIONAL INFORMATION		
STATUS OF DRAWING B		
DISTRIBUTION OF PRINTS	O/C-1	SWM-3
	TCX-1	



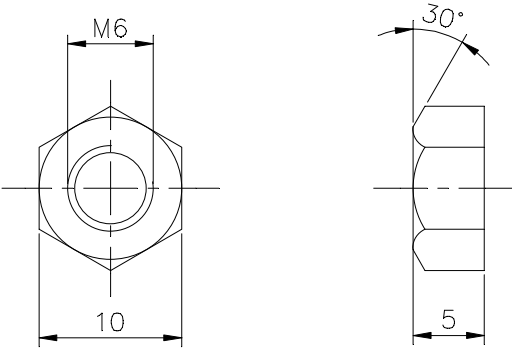
001	35210601658	053
003	35210601658	047
002	35210601658	049
001	05216901503	029
001	05216301500	042
ITEM	REF. TO ASSY.	IT. NO.

ST 946358	004	NYLON MOULDING		BP 22962	KG.	-
ST 946352	003	NYLON MOULDING		BP 22962	KG.	001
ST 946351	002	NYLON MOULDING		BP 22962	KG.	001
ST 946350	001	NYLON MOULDING		BP 22962	KG.	001
REMARKS	ITEM NO.	DESCRIPTION	STD.	MATL. CODE	A - C	UNIT WT.
				MATL. SPECN	UNITS	QTY.

SIGN & DATE		NAME		SIGN.	DATE	NO.OF VAR
INVENTORY No.		DRN		P. PARE	Sd/-	28.10.92
		CHD		B.K.RATH	Sd/-	29.10.92
		APPD		J.S.P.	Sd/-	29.10.92
DEPT. SWE	UN. TOL.DIM.GR.	SCALE	WEIGHT (Kg.)	REF. TO ASSY. DRG.		ITEM NO.
CODE 409	M AA 0230208	1:1		REF. TABLE		-
TITLE				DRAWING No.		REV.
INSULATING SCRUI				4 521 50 01658		03
		SHEET NO.	01	NO.OF SHEETS		01

64520/2024/HEP-SWM20900

REV.	DATE	ALTERED			ADDITIONAL INFORMATION			
		CHECKED	01	11.04.03	CHECKED			
			DRG. REDRAWN.			STATUS OF DRAWING B		
			(DCA NO. 12288)			DISTRIBUTION OF PRINTS O/C-1 SWM-3 TCX-1		



ITEM 001

15095001512-027
15095001506-024
05092002501-057

REF. TO ASSY. DRG. ITEM
ST. NO. 926256

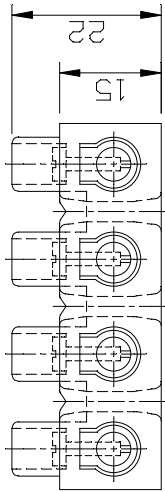
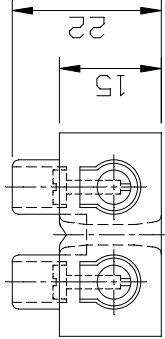
INVENTORY No.	SIGN & DATE	45095001566-R01-S01		REF. DRG. No.											
			001	HEX. NYLON NUT			PS 22962			KG.	-				
		REMARKS	ITEM NO.	DESCRIPTION	STD.	MATL. CODE		A - C	UNITS	UNIT WT.					
						MATL. SPECN				QTY.					
		<div></div> <div>BHATAT HEAVY ELECTRICALS LIMITED BHOPAL</div>				NAME		SIGN.		DATE		NO. OF VAR			
						DRN		V.V.N.		Sd/-		18.07.79			
						CHD		C.R.K.		Sd/-		18.07.79			
						APPD		-		Sd/-		07.01.86		-	
		DEPT. SWE	UN. TOL.DIM.GR.			SCALE	WEIGHT (Kg.)	REF. TO ASSY. DRG.				ITEM MO.	NO. OF ITEMS		
		CODE 409	M AA 0230208												
		TITLE						DRAWING No.				REV.			
		NUT						4 509 50 01566				01			
								SHEET NO. 01		NO. OF SHEETS 01					

64520/2024/HEP-SWM20900

DRG. NO.

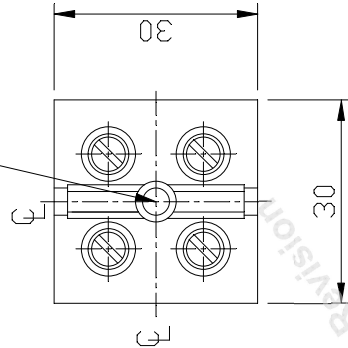
THE INFORMATION ON THIS DOCUMENT IS THE PROPERTY OF BHARAT HEAVY ELECTRICALS LIMITED
IT MUST NOT BE USED DIRECTLY OR INDIRECTLY IN ANY WAY DETRIMENTAL TO THE INTEREST OF THE COMPANY

SPECIFICATION :-
20A, 230V AND SHOULD WITHSTAND 2kV FOR ONE MINUTE.
ITEM-001: FOUR WAY TERMINAL BLOCK 20A, 230V.
ITEM-002: TWO WAY TERMINAL BLOCK 20A, 230V.

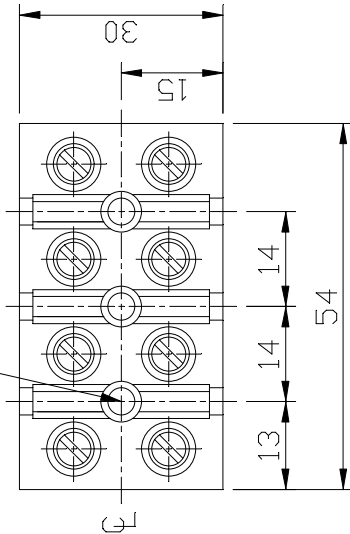


FIXING HOLE

FOR 4BA SCREW



3 FIXING HOLES
FOR 4BA SCREW



Under Revision

002	KEY LIST B.V.	22 TK. X 30X 30 LG	58 59 60	77 29 31 34	45	55 56 57	65 72
001	ASSY. OF MICRO SWITCH UNIT	22 TK. X 30 X 54 LG.	58 59 60	77 29 31 34	45	55 56 57	65 72
65	REMARKS	VAR. ITEM NO.	DESCRIPTION	DRAWING NO.	MATL. CODE	MATL. SPCN.	UNIT WT. QTY.

28	CARD TYPE-3	28	CARD TYPE-1	28	CARD TYPE-2
ADDITIONAL INFORMATION					
STATUS OF DRAWING					
DISTRIBUTION OF PRINTS					
O.COPY-----1					
SWM-----3					
TCX-----1					
REV.	DATE	ALTERED	DATE	REV.	DATE
01	08.01.14	CHECKED	AKHIL	01	08.01.14
		APPROVED	MAK		
DRG. REDRAWN					
(DCA. NO. 32349)					
TERMINAL BLOCK					
B 9400246					
01					

S1910691Z9Z ON '9RD

2

3

4

5

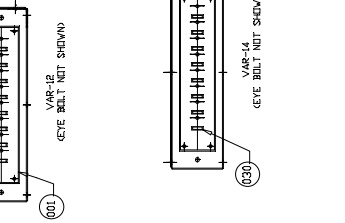
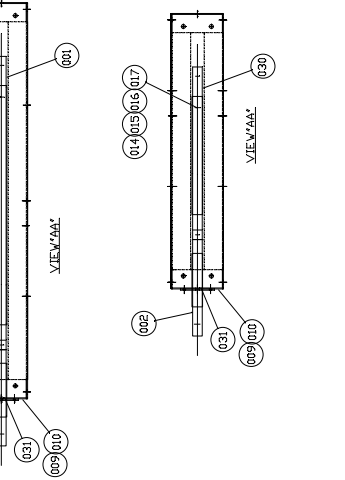
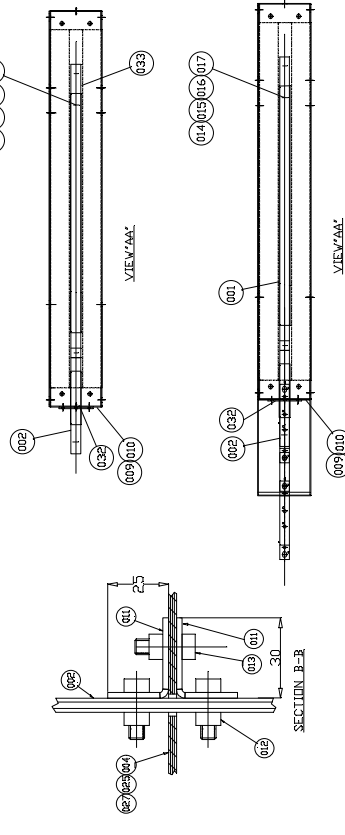
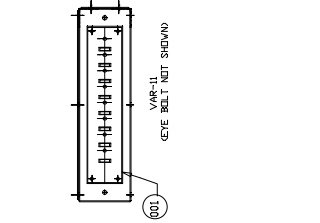
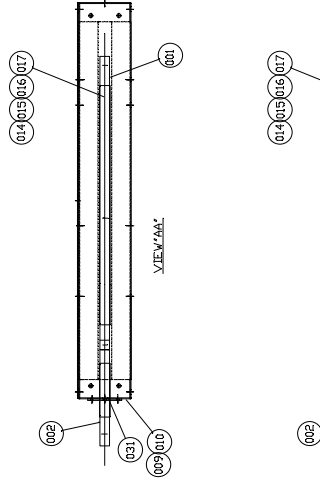
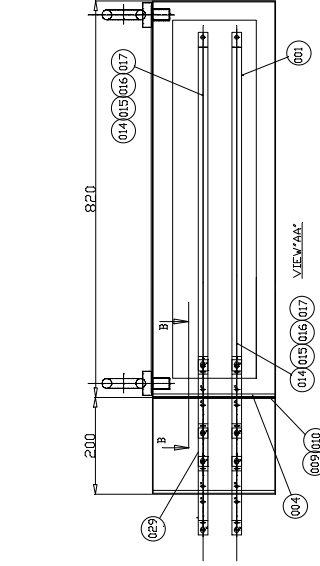
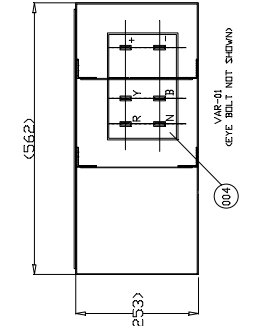
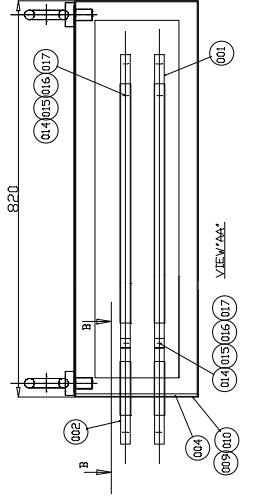
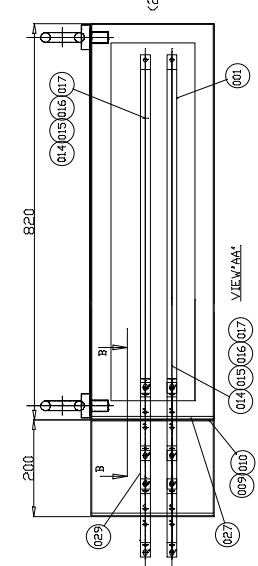
6

7

8

19/42

645



REV-907NO

REF. DRG. NO.

SIGN AND DATE

INVENTORY NO.

REV. DATE ALTERED CHECKED

11 08/05/20

VAR. 016 ADDED.

(DCA-36562)

07 13/08/14

VAR.010 ADDED

(DCA-36557)

(CN-30283)

(DCA-36557)

(CN-30283)

(DCA-36557)

(CN-30283)

(DCA-36557)

(CN-30283)

(DCA-36557)

REV. DATE ALTERED CHECKED

10 02/06/18

VAR. 014 & 015 ADDED.

(DCA-35563)

05 20/04/11

VAR.07,08,09 ADDED

(DCA-35563)

07 13/08/14

VAR.010 ADDED

(DCA-36557)

(CN-30283)

(DCA-36557)

(CN-30283)

(DCA-36557)

(CN-30283)

REV. DATE ALTERED CHECKED

09 18/02/16

VAR. 013 ADDED.

(DCA-33781)

04 20/12/06

ITEMS-005 TO 010 RELETTERED FOR ITEM-002 WAS 35216501530-002 -003 RESP.

(DCA-33781)

03 20/12/06

VIEW SEPARATED & REARRANGED

(DCA-33781)

03 20/12/06

VIEW SEPARATED & REARRANGED

(DCA-33781)

03 20/12/06

VIEW SEPARATED & REARRANGED

REV. DATE ALTERED CHECKED

08 03/06/15

VAR. 11&12 ADDED.

(DCA-33142)

03 20/12/06

ITEMS-005 TO 010 RELETTERED FOR ITEM-002 WAS 35216501530-002 -003 RESP.

(DCA-33142)

03 20/12/06

VIEW SEPARATED & REARRANGED

(DCA-33142)

03 20/12/06

VIEW SEPARATED & REARRANGED

(DCA-33142)

03 20/12/06

VIEW SEPARATED & REARRANGED

REV. DATE ALTERED CHECKED

08 03/06/15

VAR. 11&12 ADDED.

(DCA-33142)

03 20/12/06

ITEMS-005 TO 010 RELETTERED FOR ITEM-002 WAS 35216501530-002 -003 RESP.

(DCA-33142)

03 20/12/06

VIEW SEPARATED & REARRANGED

(DCA-33142)

03 20/12/06

VIEW SEPARATED & REARRANGED

(DCA-33142)

03 20/12/06

VIEW SEPARATED & REARRANGED

REV. DATE ALTERED CHECKED

08 03/06/15

VAR. 11&12 ADDED.

(DCA-33142)

03 20/12/06

ITEMS-005 TO 010 RELETTERED FOR ITEM-002 WAS 35216501530-002 -003 RESP.

(DCA-33142)

03 20/12/06

VIEW SEPARATED & REARRANGED

(DCA-33142)

03 20/12/06

VIEW SEPARATED & REARRANGED

(DCA-33142)

03 20/12/06

VIEW SEPARATED & REARRANGED

REV. DATE ALTERED CHECKED

08 03/06/15

VAR. 11&12 ADDED.

(DCA-33142)

03 20/12/06

ITEMS-005 TO 010 RELETTERED FOR ITEM-002 WAS 35216501530-002 -003 RESP.

(DCA-33142)

03 20/12/06

VIEW SEPARATED & REARRANGED

(DCA-33142)

03 20/12/06

VIEW SEPARATED & REARRANGED

(DCA-33142)

03 20/12/06

VIEW SEPARATED & REARRANGED

REV. DATE ALTERED CHECKED

08 03/06/15

VAR. 11&12 ADDED.

(DCA-33142)

03 20/12/06

ITEMS-005 TO 010 RELETTERED FOR ITEM-002 WAS 35216501530-002 -003 RESP.

(DCA-33142)

03 20/12/06

VIEW SEPARATED & REARRANGED

(DCA-33142)

03 20/12/06

VIEW SEPARATED & REARRANGED

(DCA-33142)

03 20/12/06

VIEW SEPARATED & REARRANGED

REV. DATE ALTERED CHECKED

08 03/06/15

VAR. 11&12 ADDED.

(DCA-33142)

03 20/12/06

ITEMS-005 TO 010 RELETTERED FOR ITEM-002 WAS 35216501530-002 -003 RESP.

(DCA-33142)

03 20/12/06

VIEW SEPARATED & REARRANGED

(DCA-33142)

03 20/12/06

VIEW SEPARATED & REARRANGED

(DCA-33142)

03 20/12/06

VIEW SEPARATED & REARRANGED

REV. DATE ALTERED CHECKED

08 03/06/15

VAR. 11&12 ADDED.

(DCA-33142)

03 20/12/06

ITEMS-005 TO 010 RELETTERED FOR ITEM-002 WAS 35216501530-002 -003 RESP.

(DCA-33142)

03 20/12/06

VIEW SEPARATED & REARRANGED

(DCA-33142)

03 20/12/06

VIEW SEPARATED & REARRANGED

(DCA-33142)

03 20/12/06

VIEW SEPARATED & REARRANGED

REV. DATE ALTERED CHECKED

08 03/06/15

VAR. 11&12 ADDED.

(DCA-33142)

03 20/12/06

ITEMS-005 TO 010 RELETTERED FOR ITEM-002 WAS 35216501530-002 -003 RESP.

(DCA-33142)

03 20/12/06

VIEW SEPARATED & REARRANGED

(DCA-33142)

03 20/12/06

VIEW SEPARATED & REARRANGED

(DCA-33142)

03 20/12/06

VIEW SEPARATED & REARRANGED

REV. DATE ALTERED CHECKED

08 03/06/15

VAR. 11&12 ADDED.

(DCA-33142)

03 20/12/06

ITEMS-005 TO 010 RELETTERED FOR ITEM-002 WAS 35216501530-002 -003 RESP.

(DCA-33142)

03 20/12/06

VIEW SEPARATED & REARRANGED

(DCA-33142)

03 20/12/06

VIEW SEPARATED & REARRANGED

(DCA-33142)

03 20/12/06

VIEW SEPARATED & REARRANGED

REV. DATE ALTERED CHECKED

08 03/06/15

VAR. 11&12 ADDED.

(DCA-33142)

03 20/12/06

ITEMS-005 TO 010 RELETTERED FOR ITEM-002 WAS 35216501530-002 -003 RESP.

(DCA-33142)

03 20/12/06

VIEW SEPARATED & REARRANGED

(DCA-33142)

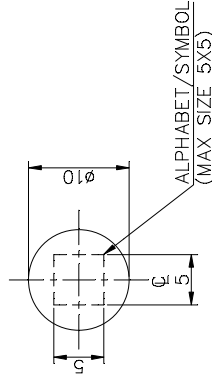
03 20/12/06

VIEW SEPARATED & REARRANGED

(DCA-33142)

03 20/12/06

VIEW SEPARATED & REARRANGED

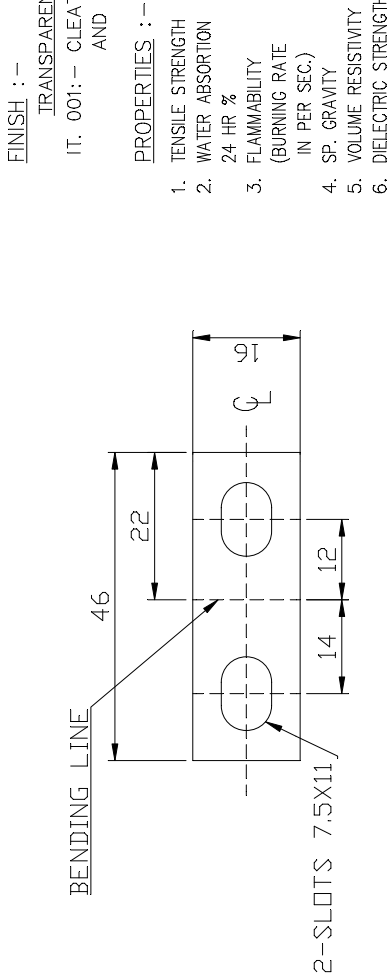
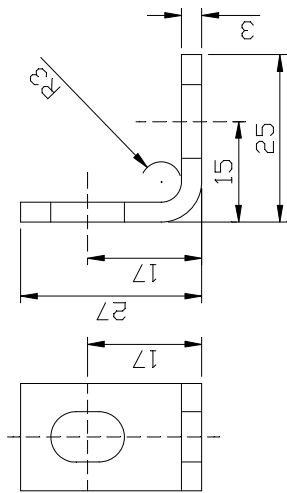


THE INFORMATION ON THIS DOCUMENT IS THE PROPERTY OF BHARAT HEAVY ELECTRICALS LIMITED IT MUST NOT BE USED DIRECTLY OR INDIRECTLY IN ANY WAY DETRIMENTAL TO THE INTEREST OF THE COMPANY

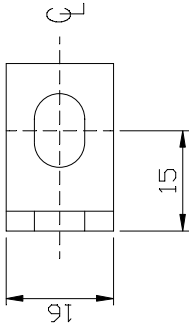
35216901556-00-1 REF. DRG. NO.

SIGN. & DATE

INVENTORY NO.



DEVELOPMENT OF ITEM-001



001

65	75	78	79	25	27	29	58	59	60	77	29	31	34	45	55	56	58	65	72
REMARKS		VAR. NO.		ITEM NO.		DESCRIPTION		DRAWING NO.		IT. NO.		MATL. CODE		MATL. SPECN.		UNIT WT.		QTY.	
28 → CARD TYPE-3		28 → CARD TYPE-1		28 → CARD TYPE-2		BP2251767029		BP22567		0.0022									
ADDITIONAL INFORMATION		POLYCARBONATE		001		3 TL. X 16/46.6		mRkn dk i-dkj ;k		xk-gd@fj;ketuk dk uke		TYPE OF PRODUCT OR NAME OF CUSTOMER/PROJECT		HAK,jr gsoh bysfdV&dYl fyfeVsM		HAKsiky		BHARAT HEAVY ELECTRICALS LTD. BHOPAL	
STATUS OF DRAWING		DISTRIBUTION OF PRINTS		Q.COPY-----1		SWM-----3		TCX-----1		HAK,jr gsoh bysfdV&dYl fyfeVsM		HAKsiky		BHARAT HEAVY ELECTRICALS LTD. BHOPAL		HAK,jr gsoh bysfdV&dYl fyfeVsM		HAKsiky	
REV. DATE		ALTERED		CHECKED		APPROVED		AD		HAK,jr gsoh bysfdV&dYl fyfeVsM		HAKsiky		BHARAT HEAVY ELECTRICALS LTD. BHOPAL		HAK,jr gsoh bysfdV&dYl fyfeVsM		HAKsiky	
01		16.08.22		AKHIL		AKHIL		AD		HAK,jr gsoh bysfdV&dYl fyfeVsM		HAKsiky		BHARAT HEAVY ELECTRICALS LTD. BHOPAL		HAK,jr gsoh bysfdV&dYl fyfeVsM		HAKsiky	
DEVELOPMENT SIZE WAS 49. SLOT 7.5X11 WAS HOLE Ø7.5.		DEVELOPMENT SIZE WAS 49. SLOT 7.5X11 WAS HOLE Ø7.5.		DEVELOPMENT SIZE WAS 49. SLOT 7.5X11 WAS HOLE Ø7.5.		DEVELOPMENT SIZE WAS 49. SLOT 7.5X11 WAS HOLE Ø7.5.		DEVELOPMENT SIZE WAS 49. SLOT 7.5X11 WAS HOLE Ø7.5.		DEVELOPMENT SIZE WAS 49. SLOT 7.5X11 WAS HOLE Ø7.5.		DEVELOPMENT SIZE WAS 49. SLOT 7.5X11 WAS HOLE Ø7.5.		DEVELOPMENT SIZE WAS 49. SLOT 7.5X11 WAS HOLE Ø7.5.		DEVELOPMENT SIZE WAS 49. SLOT 7.5X11 WAS HOLE Ø7.5.		DEVELOPMENT SIZE WAS 49. SLOT 7.5X11 WAS HOLE Ø7.5.	
(DCA 37403)		(DCA 37403)		(DCA 37403)		(DCA 37403)		(DCA 37403)		(DCA 37403)		(DCA 37403)		(DCA 37403)		(DCA 37403)		(DCA 37403)	