

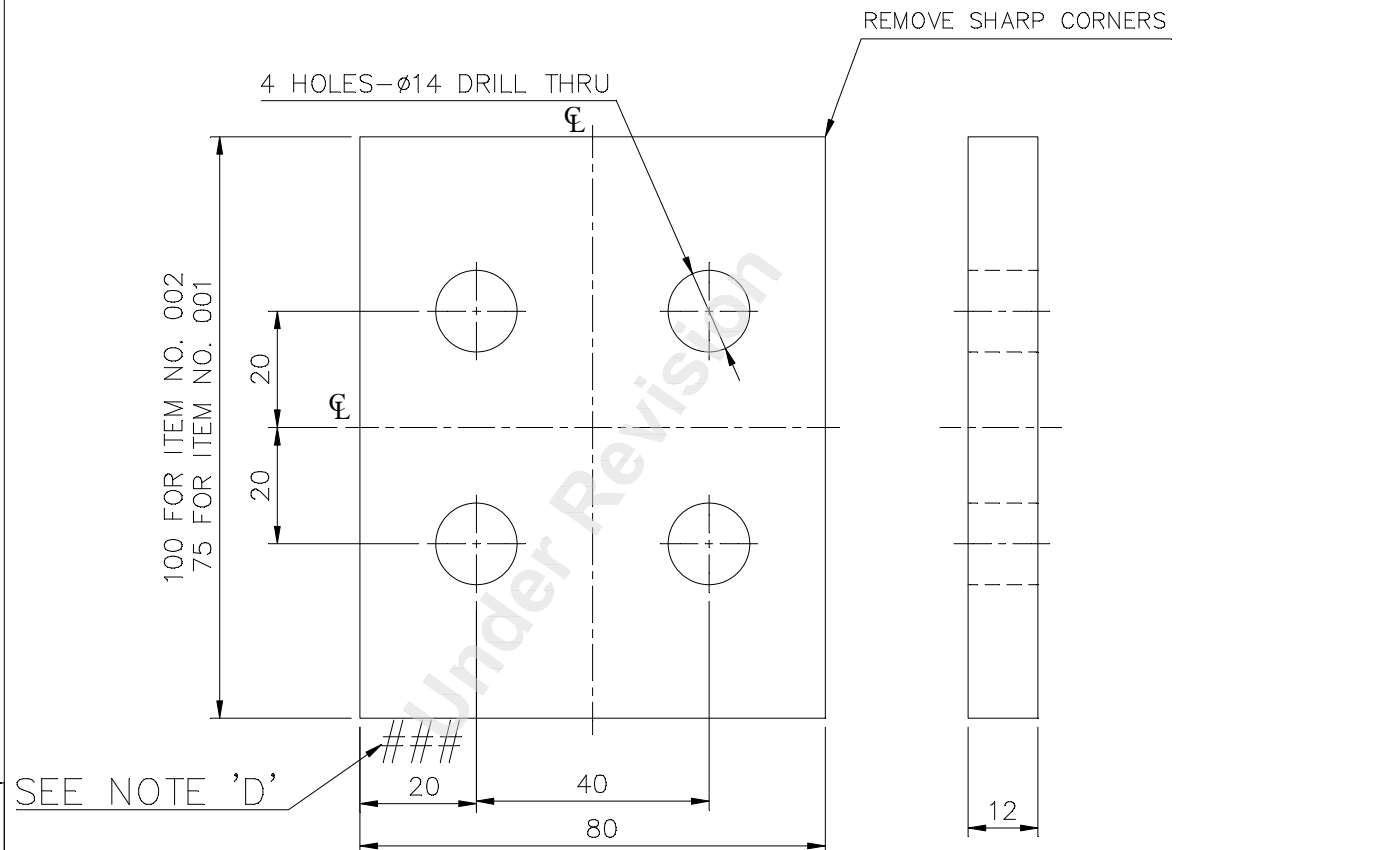
7451/2024/HEP-SWM20900


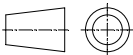
THE INFORMATION ON THIS DOCUMENT IS THE PROPERTY OF BHARAT HEAVY ELECTRICALS LIMITED
IT MUST NOT BE USED DIRECTLY OR INDIRECTLY IN ANY WAY DETRIMENTAL TO THE INTEREST OF THE COMPANY

REV.	DATE	ALTERED CHECKED	AKN	ADDITIONAL INFORMATION
04	20.03.14	CHECKED	BPC	
		APPROVED	HRP	
IMPORTANT NOTES (CTQ) UPDATED.				STATUS OF DRAWING
(DCA. NO. 32456)				DISTRIBUTION OF PRINTS
				O.C-1
				TCX-1
				SWM-3

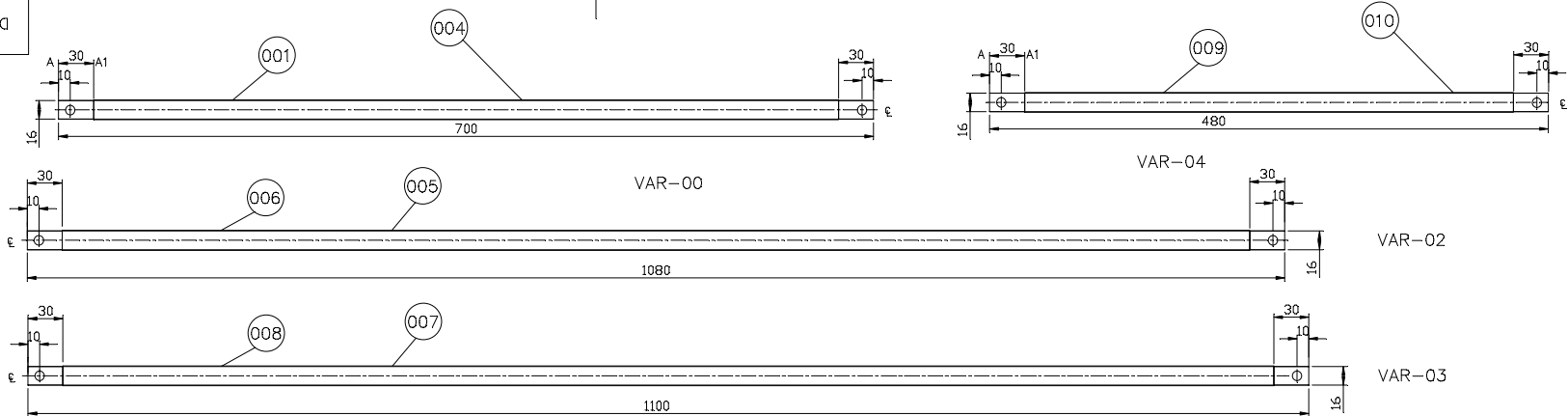
IMPORTANT NOTES (CTQ)

- A) SILVER PLATING ON COMPLETE SURFACE AREA SHALL BE DONE AS PER SG14610. SILVER PLATING THICKNESS SHALL BE MINIMUM 5 MICRON AND AREA SHALL BE 166 SQ. CM. FOR ITEM-001 & 212 SQ. CM. FOR ITEM-002.
- B) 5% SAMPLE SHALL BE COMPULSORILY CHECKED FOR PLATING THICKNESS AFTER RECEIPT AT BHOPAL WORKS.
- C) ADHESION AND ANTI-TARNISHING SHALL ALSO BE CHECKED.
- D) SUPPLIER LOGO & PO NO. TO BE PUNCHED AT LOCATIONS MARKED ###. STICKER IS NOT ACCEPTABLE.



REF. DRG. NO.	SEE NOTE 'D'		20		40		80		12						
		002	12 X 100 X 80LG. HD. CPR. ROD			BP1200323076 AA12023		kg	0.857 001						
		001	12 X 75 X 80LG CPR. ROD			BP1200323955 AA12023			kg	0.640 001					
	65		75	25	27	29	58	59		46	54	55	56	68	7
	REMARKS		ITEM NO.	DESCRIPTION			STD	MATL. CODE		A - C	UNIT	UNIT WT.			
						MATL. SPCN.		QTY.							
SIGN. & DATE	28 → CARD TYPE-3		28 → CARD TYPE-1				28 → CARD TYPE-2								
	<div></div> <div>BHARAT HEAVY ELECTRICALS LIMITED BHOPAL</div>							NAME	SIGN	DATE	NO. OF VAR.				
							DRN	R.K.S.	sd/-	21.01.86					
							CKD	M.Z.G	sd/-	21.01.86					
						APPD	R.V.G.	sd/-	21.01.86	-					
INVENTORY NO.	DEPT.	SWE	UNTOL.DIMS. GR.		SCALE	1:1	WEIGHT (K.G.)	-	REF. TO ASSY. DRG.		ITEM NO.	NO. OF ITEM			
	CODE.	409							35211001500-099 35211001560-108 35211001611-099						
	TITLE								DRAWING NO.		REV.				
	PACKER								45211001700		04				
								SHT. No. 01		NO. OF SHT. 01					

7451/2024/HEP-SWM20900



UNSPECIFIED TOLERANCES SHALL BE :-
FOR SHEARING OF FLATS AS PER AA0230409
FOR MACHINING MEDIUM AA0230208.

NOTE: -

PUNCH DRG.NO. IT. NO./VAR.NO. AT THIS LOCATION

FINISH: -

FOR PLATING REFER SG14610 AND ENGG.SPEC./MID
WITHIN DIM. WITH MARK 'A-A1'

AREA OF PLATING: -

FOR ITEM 001-003-12.36 sq.cm.

USAGE

V00 FOR 820W AIS
V02 FOR 1200W AIS
V03 FOR 1220W AIS

001						010	SLEEVE PVC 14 DIA X 420 LG.			AA2251021086	NA	Kg	0.025		
001						009	CONNECTION 16 X 3 X 480 CPR.	35216901552	004		NA	Kg	0.473		
	001					008	SLEEVE PVC 14 DIA X 1040 LG.			AA2251021086	NA	Kg	0.025		
	001					007	CONNECTION 16 X 3 X 1100 CPR.	35216901552	003		NA	Kg	0.473		
		001				006	SLEEVE PVC 14 DIA X 1020 LG.			AA2251021086	NA	Kg	0.025		
		001				005	CONNECTION 16 X 3 X 1080 CPR.	35216901552	002		NA	Kg	0.43		
			001			004	SLEEVE PVC 14 DIA X 640 LG.			AA2251021086	NA	Kg	0.028		
			001			001	CONNECTION 16 X 3 X 700 CPR.	35216901552	001		NA	Kg	0.28		
VAR04	VAR03	VAR02	VAR00	REMARKS	VAR. NO.	ITEM NO.	DESCRIPTION	STD	DRAWING NO.	IT. NO.	MATL. CODE	UNIT WT.	QTY.	ZONE	

28 → CARD TYPE-3

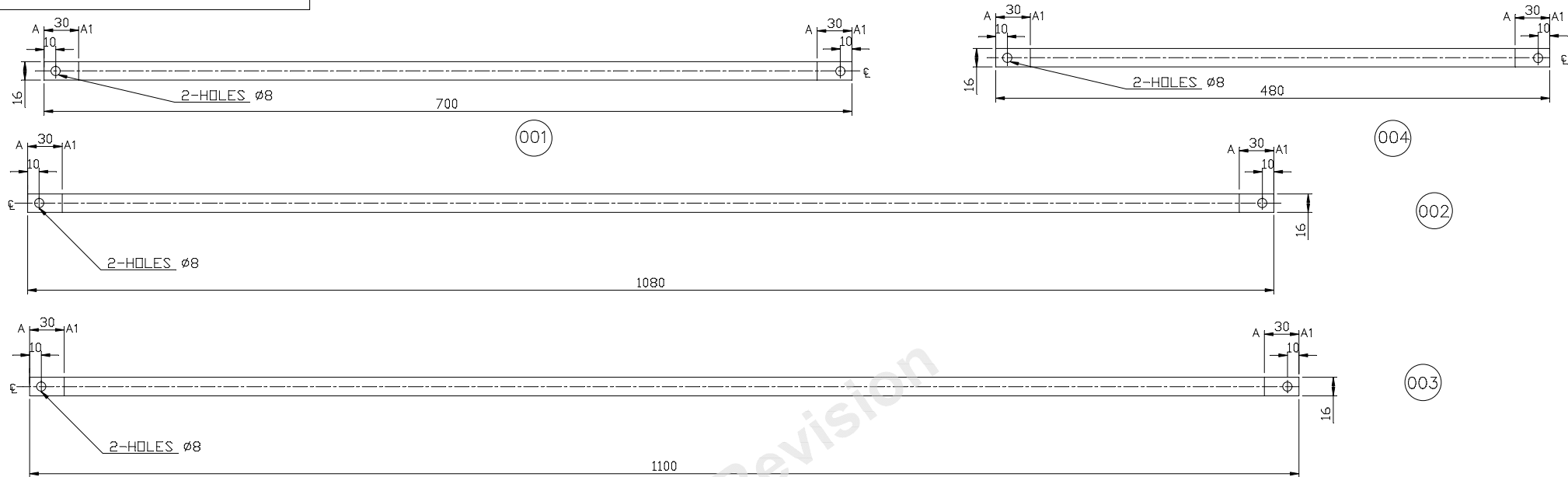
28 → CARD TYPE-1

28 → CARD TYPE-2

REV. 06	DATE 17.08.17	ALTERED SKG	CHECKED AKHIL	APPROVED AD	VAR 04 ADDED	(DCA. NO.-35130)	ADDITIONAL INFORMATION	mRikn dk i-dkj ; k xk-gd@fj;kstuk dk uke TYPE OF PRODUCT OR NAME OF CUSTOMER/PROJECT		VM 12 (820 AND 1220)	
STATUS OF DRAWING							DISTRIBUTION OF PRINTS		HAKjr gsoh bysfdV&dYl fyfeVsm		
O.COPY-----1 SWM-----3 TCX-----1							HAKsiky BHARAT HEAVY ELECTRICALS LTD. BHOPAL		B.R.MALVYA		
REV. 04							REV. 03		R.M.		
REV. 05							REV. 04		13.11.98		
REV. 06							REV. 05		03		
REV. 07							REV. 06		06		
REV. 08							REV. 07		06		
REV. 09							REV. 08		06		
REV. 10							REV. 09		06		
REV. 11							REV. 10		06		
REV. 12							REV. 11		06		
REV. 13							REV. 12		06		
REV. 14							REV. 13		06		
REV. 15							REV. 14		06		
REV. 16							REV. 15		06		
REV. 17							REV. 16		06		
REV. 18							REV. 17		06		
REV. 19							REV. 18		06		
REV. 20							REV. 19		06		
REV. 21							REV. 20		06		
REV. 22							REV. 21		06		
REV. 23							REV. 22		06		
REV. 24							REV. 23		06		
REV. 25							REV. 24		06		
REV. 26							REV. 25		06		
REV. 27							REV. 26		06		
REV. 28							REV. 27		06		
REV. 29							REV. 28		06		
REV. 30							REV. 29		06		
REV. 31							REV. 30		06		
REV. 32							REV. 31		06		
REV. 33							REV. 32		06		
REV. 34							REV. 33		06		
REV. 35							REV. 34		06		
REV. 36							REV. 35		06		
REV. 37							REV. 36		06		
REV. 38							REV. 37		06		
REV. 39							REV. 38		06		
REV. 40							REV. 39		06		
REV. 41							REV. 40		06		
REV. 42							REV. 41		06		
REV. 43							REV. 42		06		
REV. 44							REV. 43		06		
REV. 45							REV. 44		06		
REV. 46							REV. 45		06		
REV. 47							REV. 46		06		
REV. 48							REV. 47		06		
REV. 49							REV. 48		06		
REV. 50							REV. 49		06		
REV. 51							REV. 50		06		
REV. 52							REV. 51		06		
REV. 53							REV. 52		06		
REV. 54							REV. 53		06		
REV. 55							REV. 54		06		
REV. 56							REV. 55		06		
REV. 57							REV. 56		06		
REV. 58							REV. 57		06		
REV. 59							REV. 58		06		
REV. 60							REV. 59		06		
REV. 61							REV. 60		06		
REV. 62							REV. 61		06		
REV. 63							REV. 62		06		
REV. 64							REV. 63		06		
REV. 65							REV. 64		06		
REV. 66							REV. 65		06		
REV. 67							REV. 66		06		
REV. 68							REV. 67		06		
REV. 69							REV. 68		06		
REV. 70							REV. 69		06		
REV. 71							REV. 70		06		
REV. 72							REV. 71		06		
REV. 73							REV. 72		06		
REV. 74							REV. 73		06		
REV. 75							REV. 74		06		
REV. 76							REV. 75		06		
REV. 77							REV. 76		06		
REV. 78							REV. 77		06		
REV. 79							REV. 78		06		
REV. 80							REV. 79		06		
REV. 81							REV. 80		06		
REV. 82							REV. 81		06		
REV. 83							REV. 82		06		
REV. 84							REV. 83		06		
REV. 85							REV. 84		06		
REV. 86							REV. 85		06		
REV. 87							REV. 86		06		
REV. 88							REV. 87		06		
REV. 89							REV. 88		06		
REV. 90							REV. 89		06		
REV. 91							REV. 90		06		
REV. 92							REV. 91		06		
REV. 93							REV. 92		06		
REV. 94							REV. 93		06		
REV. 95							REV. 94		06		
REV. 96							REV. 95		06		
REV. 97							REV. 96		06		
REV. 98							REV. 97		06		
REV. 99							REV. 98		06		
REV. 100							REV. 99		06		

LT BUSBAR

7451/2024/HEP-SWM20900



		004	HARD CPR.STRIP 16 X 3 THK. X 480 LG.																																																																																																																																																																																																																																																																																																																																																																																																																																																																																																																																																																																																																																																													
--	--	-----	---	--	--	--	--	--	--	--	--	--	--	--	--	--	--	--	--	--	--	--	--	--	--	--	--	--	--	--	--	--	--	--	--	--	--	--	--	--	--	--	--	--	--	--	--	--	--	--	--	--	--	--	--	--	--	--	--	--	--	--	--	--	--	--	--	--	--	--	--	--	--	--	--	--	--	--	--	--	--	--	--	--	--	--	--	--	--	--	--	--	--	--	--	--	--	--	--	--	--	--	--	--	--	--	--	--	--	--	--	--	--	--	--	--	--	--	--	--	--	--	--	--	--	--	--	--	--	--	--	--	--	--	--	--	--	--	--	--	--	--	--	--	--	--	--	--	--	--	--	--	--	--	--	--	--	--	--	--	--	--	--	--	--	--	--	--	--	--	--	--	--	--	--	--	--	--	--	--	--	--	--	--	--	--	--	--	--	--	--	--	--	--	--	--	--	--	--	--	--	--	--	--	--	--	--	--	--	--	--	--	--	--	--	--	--	--	--	--	--	--	--	--	--	--	--	--	--	--	--	--	--	--	--	--	--	--	--	--	--	--	--	--	--	--	--	--	--	--	--	--	--	--	--	--	--	--	--	--	--	--	--	--	--	--	--	--	--	--	--	--	--	--	--	--	--	--	--	--	--	--	--	--	--	--	--	--	--	--	--	--	--	--	--	--	--	--	--	--	--	--	--	--	--	--	--	--	--	--	--	--	--	--	--	--	--	--	--	--	--	--	--	--	--	--	--	--	--	--	--	--	--	--	--	--	--	--	--	--	--	--	--	--	--	--	--	--	--	--	--	--	--	--	--	--	--	--	--	--	--	--	--	--	--	--	--	--	--	--	--	--	--	--	--	--	--	--	--	--	--	--	--	--	--	--	--	--	--	--	--	--	--	--	--	--	--	--	--	--	--	--	--	--	--	--	--	--	--	--	--	--	--	--	--	--	--	--	--	--	--	--	--	--	--	--	--	--	--	--	--	--	--	--	--	--	--	--	--	--	--	--	--	--	--	--	--	--	--	--	--	--	--	--	--	--	--	--	--	--	--	--	--	--	--	--	--	--	--	--	--	--	--	--	--	--	--	--	--	--	--	--	--	--	--	--	--	--	--	--	--	--	--	--	--	--	--	--	--	--	--	--	--	--	--	--	--	--	--	--	--	--	--	--	--	--	--	--	--	--	--	--	--	--	--	--	--	--	--	--	--	--	--	--	--	--	--	--	--	--	--	--	--	--	--	--	--	--	--	--	--	--	--	--	--	--	--	--	--	--	--	--	--	--	--	--	--	--	--	--	--	--	--	--	--	--	--	--	--	--	--	--	--	--	--	--	--	--	--	--	--	--	--	--	--	--	--	--	--	--	--	--	--	--	--	--	--	--	--	--	--	--	--	--	--	--	--	--	--	--	--	--	--	--	--	--	--	--	--	--	--	--	--	--	--	--	--	--	--	--

UNSPECIFIED TOLERANCES SHALL BE :-

FOR SHEARING OF FLATS AS PER AA0230409
FOR MACHINING MEDIUM AA0230208.

NOTE: -

PUNCH DRG.NO. IT. NO./VAR.NO. AT THIS LOCATION

FINISH: -

TIN PLATING TO SPEC. AA 0673602
WITHIN DIM. WITH MARK 'A-A1' (5 micron min)

AREA OF PLATING: -

FOR ITEM 001&002-12.36 sq.cm.

28 → CARD TYPE-3

28 → CARD TYPE-1

28 → CARD TYPE-2

ADDITIONAL INFORMATION

STATUS OF DRAWING

DISTRIBUTION OF PRINTS

O.COPY-----1
SWM-----3
TCX-----1mRikn dk i-dkj ;k
xk-gd@fj;kstuk dk uke
TYPE OF PRODUCT OR
NAME OF CUSTOMER/PROJECT

VM 12 (820 AND 1220)

HAKjr gsoh bysfDV&dYl fyfeVsM
HAKsiky
BHARAT HEAVY ELECTRICALS LTD.
BHOPAL

uke@NAME	gLrk@SIGN	fnaukd@DATE	osfj_ dh
PARE	sd/-	15-4-08	lqf_ k
MANI	sd/-		80. OF
MAK	sd/-		VAR

35216901552-02-01
REF. DRG. NO.

SIGN. & DATE

INVENTORY NO.

03	REV.	DATE	ALTERED	sg	02	REV.	DATE	ALTERED	sg	01	REV.	DATE	ALTERED	PARE	foHAKx DEPT SWE	vu_ Vky_ uki dh Js.kh UNTIL DIMS. GR.		vuqikr SCALE	HAKj fd_xk_ WEIGHT (K.G.)	vis_ M&kbZax dk lanHAZ REF. TO ASSY. DRG.	en d_ _ ITEM NO.	en_ lqf_ k NO. OF ITEM								
		29.7.16	CHECKED	akhil			29.7.16	CHECKED	rg			09.09.09	CHECKED	MANI																
			APPROVED	ad				APPROVED	ad				APPROVED	MAK																
ITEM 004 ADDED (DCA.NO.35131)					ITEM 003 ADDED (DCA.NO.34078)					DRG REVISED TO UPDATE WT & FINISH. (DCA.NO.29170)										LT BUSBAR (COPPER 16 X 3 TK)					vksj[A d_ _ DRAWING NO. 35216901552					
																				i="B d_ _ No. 01					i="Bksa dh lqf_ k NO. OF SHT. 01					

7451/2024/HEP-SWM20900

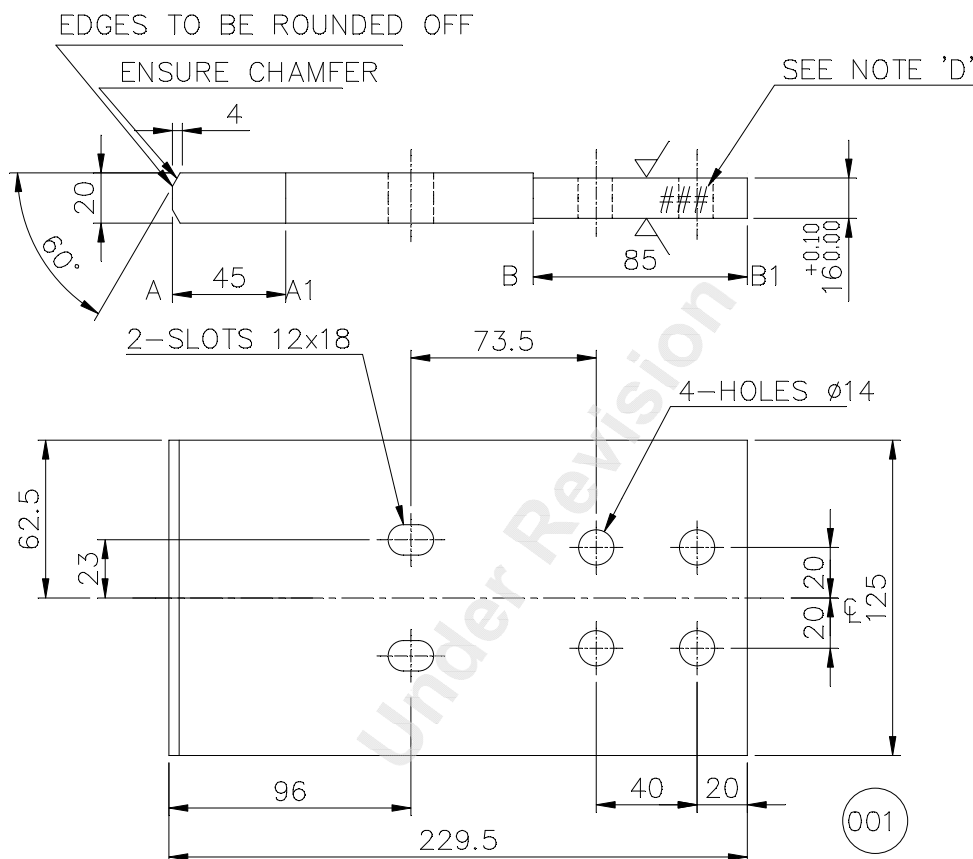
THE INFORMATION ON THIS DOCUMENT IS THE PROPERTY OF BHARAT HEAVY ELECTRICALS LIMITED. IT MUST NOT BE USED DIRECTLY OR INDIRECTLY IN ANY WAY DETRIMENTAL TO THE INTEREST OF THE COMPANY

024/HEP-SWM20900	REV.	DATE	ALTERED CHECKED	AKN AKHIL	REV.	DATE	ALTERED CHECKED	AR AD	ADDITIONAL INFORMATION
09	26.08.23	APPROVED	AD	08	12.09.18	APPROVED	AD		
4-HOLES Ø7.5 & C'SK DELETED.				NOTE-'D' MODIFIED.				STATUS OF DRAWING	B
(DCA NO. 38413)				(DCA NO. 35645)				DISTRIBUTION OF PRINTS	0/C-1 SWM-3 TCX-1

UNSPECIFIED TOLERANCES SHALL BE: -
FOR SHEARING OF PLATES AS PE AA 0230409

IMPORTANT NOTES (CTQ)

- A) SILVER PLATING ON AREA ALONG LENGTH MARKED "AA1 & BB1" SHALL BE DONE AS PER SG14610. SILVER PLATING THICKNESS SHALL BE MINIMUM 13 MICRON FOR AREA "AA1" & 5 MICRON FOR AREA "BB1" AND PLATING AREA SHALL BE 476.03 SQ. CM. FOR ITEM-001 & 492.63 SQ. CM. FOR ITEM-002.
- B) 5% SAMPLE SHALL BE COMPULSORILY CHECKED FOR PLATING THICKNESS AFTER RECEIPT AT BHPOL WORKS.
- C) ADHESION AND ANTI-TARNISHING SHALL ALSO BE CHECKED.
- D) SUPPLIER NAME, LOGO, PO. NO., SERIAL NO., SUPPLY DATE & BATCH NO. TO BE PUNCHED/LASER PRINT AT LOCATIONS MARKED ###. STICKER IS NOT ACCEPTABLE.



BP9099127499	002	20X130X229.5 LG. COPPER FLAT		AA12023			5.31
							001
BP9049111394	001	20X125X229.5 LG. COPPER FLAT		AA12023			5.11
							001
65 REMARKS	75 ITEM NO.	27 DESCRIPTION	58 STD	59 46 MATL. CODE	54 55 C I A	56 UNIT	68 7 UNIT WT.
				MATL. SPCN.			QTY.


28 → CARD TYPE-3	28 → CARD TYPE-1	28 → CARD TYPE-2
------------------	------------------	------------------



HAKjr gsoh bysDV&hdYl fyfeVsM
HAKsiky

BHARAT HEAVY ELECTRICALS LTD.
BHOPAL

	uke NAME	gLRk— SIGN	fnuokd DATE	osfj— dh la[:k
cuk;k DRN	P.PARE	s/d	09.07.03	NO. OF VAR.
tkapk okd	K.S.M.	s/d	09.07.03	
vugaksfr APPD	H.R.P.	s/d	09.07.03	—

foHAKx DEPT SWE	vu_ Vky_ uki dh Js.kh UNTOL.DIMS. GR. M		vuqikr SCALE 1:1	HAKj fd_xk— WEIGHT <K.G>	vis_M&kbZax dk lanHAZ REF. TO ASSY. DRG. —	en d— ITEM NO. —	en la[k NO. OF ITEM 002
dkSM CODE 409	AA 0230208						

'Ah"AZd@E

FIXED CONTACT

vkjs[A d-DRAWING NO.
45211001764

iqu@REV.

0.9

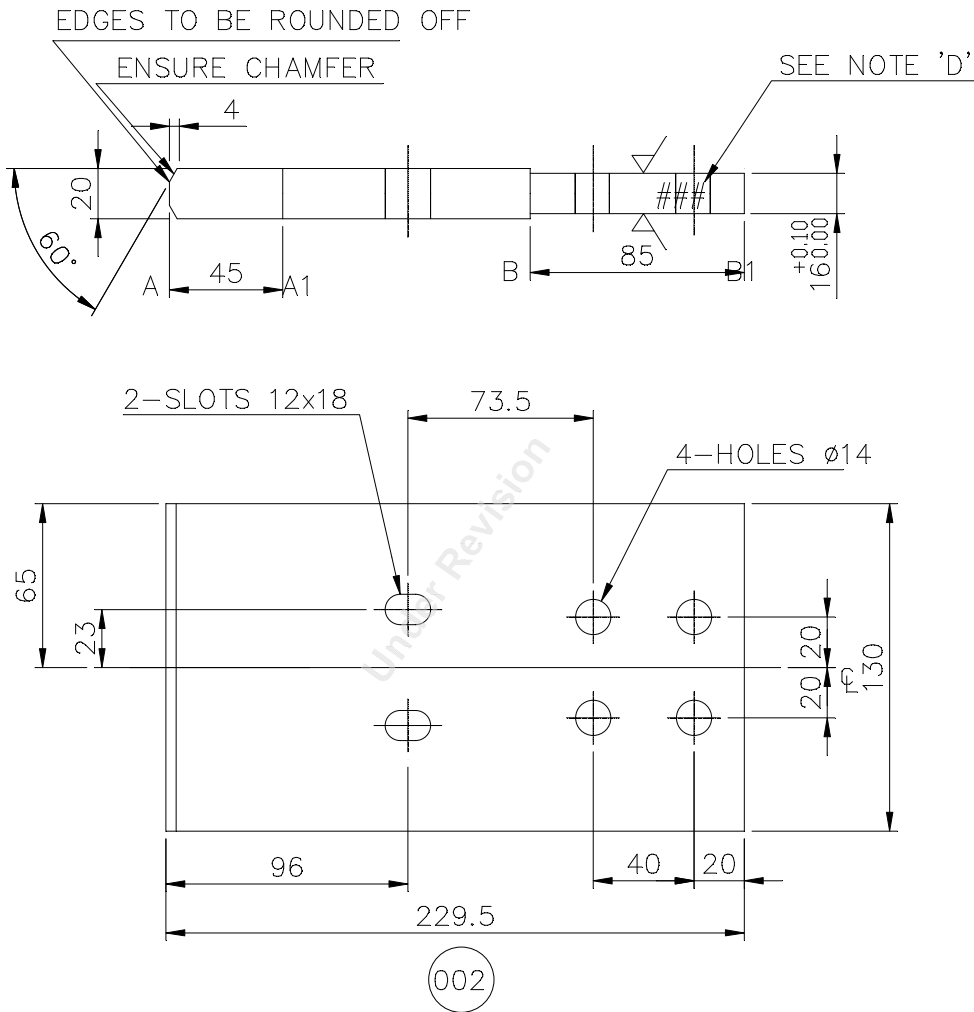
i="B d-SOT. No. 01

i="Bksa dh la[no OF SHT. 02

7451/2024/HEP-SWM20900

THE INFORMATION ON THIS DOCUMENT IS THE PROPERTY OF BHARAT HEAVY ELECTRICALS LIMITED
IT MUST NOT BE USED DIRECTLY OR INDIRECTLY IN ANY WAY DETRIMENTAL TO THE INTEREST OF THE COMPANY

REV.	DATE	ALTERED CHECKED	AKN AKHIL	REV.	DATE	ALTERED CHECKED	AR AD	ADDITIONAL INFORMATION
09	26.08.23	APPROVED	AD	08	12.09.18	APPROVED	AD	
4-HOLES $\phi 7.5$ & C'SK DELETED.				NOTE-'D' MODIFIED.				STATUS OF DRAWING
(DCA NO. 38413)				(DCA NO. 35645)				B
								DISTRIBUTION OF PRINTS
								O/C-1 SWM-3 TCX-1



REF. DRG. NO.	<div><div>96</div><div>40</div><div>20</div><div>229.5</div><div>002</div></div>																					
	65	75	25	27	29	58	59	46	54	55	56	68	71									
SIGN. & DATE	REMARKS		ITEM NO.		DESCRIPTION				STD		MATL. CODE		MATL. SPCN.		UNIT		UNIT WT.		QTY.			
	28 → CARD TYPE-3				28 → CARD TYPE-1				28 → CARD TYPE-2													
INVENTORY NO.	<div><div>बी एच ई एल</div><div>BHEL</div></div>		HAKjr gsOh bysDV&hdYl fyfeVsM HAKsiky BHARAT HEAVY ELECTRICALS LTD. BHOPAL										uke NAME		qLrk_— SIGN		fnuakd DATE		osfj_ dh la[:k NO. OF VAR.			
	foHAKx DEPT SWE		vu_ Vky_ uki dh Js.kh UNTOL.DIMS. GR. M				vuqikr SCALE 1:1		HAKj fd_xk_— WEIGHT (K.G.)		vis_M&kbZax dk lanHAZ REF. TO ASSY. DRG. —		en d_— ITEM NO.		en la[:k NO. OF ITEM							
	dksM CODE 409		AA 0230208																			
	'Ah"AZD.E																vkjs[A d—DRAWING NO. 45211001764				iquREV. 09	
	FIXED CONTACT																i="B d—SHT. No. 02		i="Bksa dh la[:k OF SHT. 02			

THE INFORMATION ON THIS DOCUMENT IS THE PROPERTY OF BHARAT HEAVY ELECTRICALS LIMITED. IT MUST NOT BE USED DIRECTLY OR INDIRECTLY IN ANY WAY DETRIMENTAL TO THE INTEREST OF THE COMPANY.

7451/2024/HEP-SWM20900
DRG. NO. 35215002008-00-01

018	016	016	016		014	NUT HEX A M8-8.8			AA7151115024	NA	Kg	0.005		
018	018	018	018		013	WASHER SPRING LOCK SC B8-ST			AA7164002053	NA	Kg	0.002		
018	018	018	018		012	WASHER MCD 8.4-ST			AA7161001056	NA	Kg	0.002		
018	018	018	018		011	SCRU HEX A M8X25-8.8			AA7121123126	NA	Kg	0.014		
-	004	004	004		010	WASHER SPRING LOCK SC B6-ST			AA7164002045	NA	Kg	0.001		
-	004	004	004		009	WASHER MCD 6.4-ST			AA7161001048	NA	Kg	0.001		
-	004	004	004		008	SCRU HEX SLT A M6X25-8.8			BP7121125951	NA	Kg	0.007		
-	-	-	001		007	EARTH BAR	35215001787	004		NA	Kg	0.430		
-	-	-	001		006	EARTH BAR	35215001787	005		NA	Kg	1.175		
-	-	-	002		005	EARTH CONNECTION	35215001789	005		NA	Kg	0.422		
-	-	-	001		004	EARTH CONNECTION	35215001789	006		NA	Kg	0.342		
-	002	002	002		003	EARTH CONTACT FOR BV3 OR 4 UNI	D9277173	001	BP9049024750	NA	Kg	0.1058		
-	-	-	001		002	EARTH BAREARTH BAR	35215001661	002		NA	N.A.	1.146		
-	-	-	001		001	EARTH BAREARTH BAR	35215001661	001		NA	Kg	1.146		
VAR03	VAR02	VAR01	VAR00	REMARKS	VAR. NO.	ITEM NO.	DESCRIPTION	STD	DRAWING NO.	IT.ND.	MATL. CODE	UNIT WT.	ZONE	

VAR. 00 - EARTHING ARRGT. FOR BREAKER CHAMBER 5x40 CU.LG.
GES. NO. 409570058 (5.075 KG.)

VAR. 01 - EARTHING ARRGT. FOR BREAKER CHAMBER 6x50 CU. LG.
GES. NO. 409570059 (7.678 KG.)

VAR. 02 - EARTHING ARRGT. FOR BREAKER CHAMBER 6x50 CU. LG.
GES. NO. 409511054 (8.302 kg.)

VAR. 03 - EARTHING ARRGT. FOR BBCT PANEL
GES. NO. 409301270 (3.059 kg.)

FOR ARRGT. REF DRG. NO. 25215001686

28 → CARD TYPE-3

28 → CARD TYPE-1

28 → CARD TYPE-2

ADDITIONAL INFORMATION

STATUS OF DRAWING

DISTRIBUTION OF PRINTS

O.COPY-----1
SWM-----3
TCX-----1

mRikn dk i-dkj ;k
xk-gd@fj;kstuk dk uke
TYPE OF PRODUCT OR
NAME OF CUSTOMER/PROJECT

VM-12



HAKjr gsoh bysfdV&dYl fyfeVsm
HAKsiky
BHARAT HEAVY ELECTRICALS LTD.
BHOPAL

uke@NAME	gLrk@SIGN	fnaukd@ATE	osfj_ dh
SUS		24.07.07	la; jk
SSA		24.07.07	NO. OF
MAK		24.07.07	VAR

INVENTORY NO.	REV.	DATE	ALTERED	SKG	REV.	DATE	ALTERED	S.D.MISHRA	REV.	DATE	ALTERED	P.PARE	WT. ADDED
			CHECKED	AKHIL			CHECKED	AKHIL			CHECKED	AKHIL	
	03	26.03.23	APPROVED	AD	02	20.06.11	APPROVED	MAK	001	28.12.10	APPROVED	MAK	
				VAR03 ADDED.				ITEM NO. 021 & VAR. 02 ADDED.					
				DCA NO. 38080				DCA NO. 34029					(30133)

foHAKx DEPT SWE
vlu_ Vky_ uki dh Js.kh UNTIL.DIMS. GR.
dksM CODE 409

AA0230208

vugjkr SCALE 1:1

HAKj fd_xk- WEIGHT (K.G.)

vks_ M&kbZax dk lanHAZ REF. TO ASSY. DRG.

en d- ITEM NO.

en_ la; k NO. OF

020

03

01

02

BOM FOR EARTHING ARRANGEMENT

35215002008


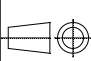
01

02

INVENTORY NO.	SIGN. & DATE	35215002008-00-02
		REF. DRG. NO.

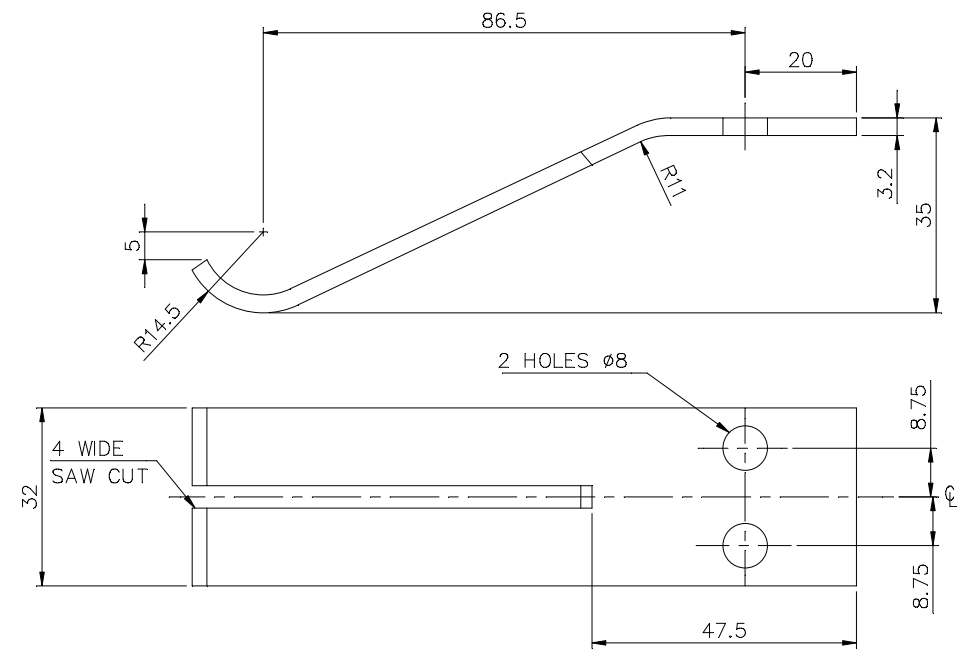
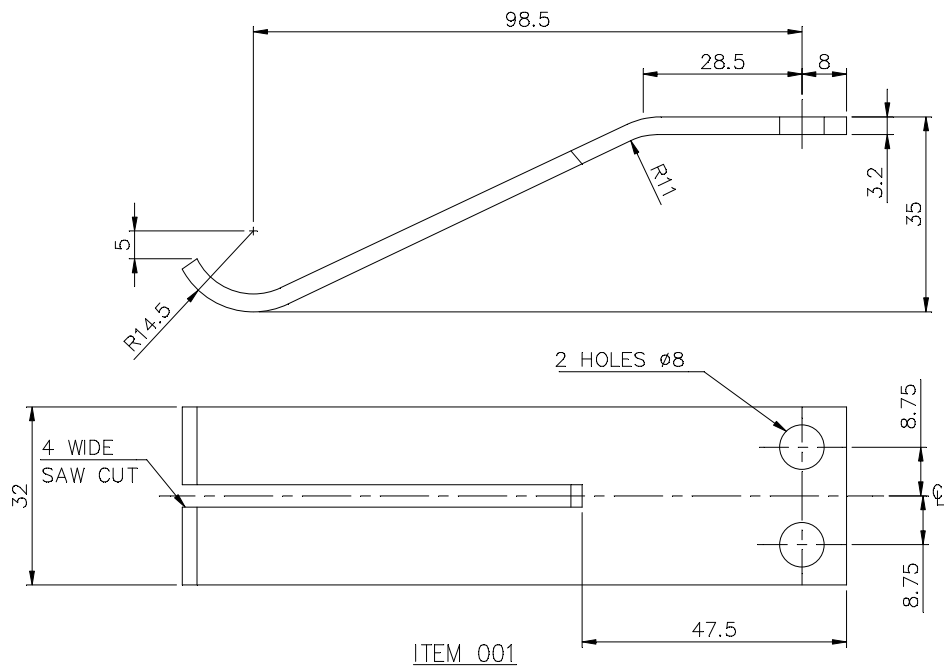
REV.	DATE	ALTERED	SKG	REV.	DATE	ALTERED	S.D.MISHRA
03	26.03.23	CHECKED	AKHIL	02	20.06.11	CHECKED	AKHIL
		APPROVED	AD			APPROVED	MAK
		VAR03 ADDED				ITEM NO. 021 & VAR.02 ADDED	
		DCA NO. 38080				DCA NO. 30429	

ADDITIONAL INFORMATION			
STATUS OF DRAWING			
DISTRIBUTION OF PRINTS			
O.COPY-----1			
SWM-----3			
TCX-----1			
REV.	DATE	ALTERED	P.PARE
001	29.12.10	CHECKED	AKHIL
		APPROVED	MAK
		WT. ADDED	
(30133)			

mRikn dk i-dkj ;k		VM-12							
xk-gd@fj;kstuk dk uke									
TYPE OF PRODUCT OR									
NAME OF CUSTOMER/PROJECT									
		HAKjr gsOh bysfDV&dYl fyfeVsm HAKsiky BHARAT HEAVY ELECTRICALS LTD. BHOPAL		uke@NAME gLrk@ SIGN fnaukd@ATE osfj- dh la; k NO. OF VAR		SUS SSA MAK		24.07.07 24.07.07 24.07.07	
foHAKx DEPT SWE		vw- Vky- uki dh js.kh UNTIL DIMS. GR.				vwqkr SCALE		HAKj fd_xk- WEIGHT (K.G.)	
dkSM CODE: 409		AA0230208		1:1		vis- M&ktZax dk lanHAZ REF. TO ASSY. DRG.		en d-- ITEM NO.	
'kh"AZ@OLE						vkjs[A d--DRAWING NO.		iqu-@EV	
BOM FOR EARTHING ARRANGEMENT						35215002008		03	
						i="B d--@, No. 02		i="Bksa dh la; NO. OF SHT. 02	

—	001	—	—		021	EARTH BAR		35215001878	003		NA	Kg	1.762		
001	001	001	—		020	EARTH BAR		35215001878	001		NA	Kg	1.762		
001	—	001	—		019	EARTH BAR		35215001878	002		NA	Kg	0.646	001	
—	002	002	—		018	EARTH CONNECTION		35215001879	001		NA	Kg	0.646		
001	001	001	—		017	EARTH CONNECTION		35215001879	002		NA	Kg	0.507		
—	001	001	—		016	EARTH BAR		35215001788	004		NA	Kg	1.695		
—	001	001	—		015	EARTH BAR		35215001788	003		NA	Kg	1.695		
VAR03	VAR02	VAR01	VAR00	REMARKS	VAR. NO.	ITEM NO.	DESCRIPTION	STD	DRAWING NO.	IT.NO.	MATL. CODE	UNIT	UNIT WT.	QTY.	ZONE



7451/2024/HER-SWM20900



STYLE LIST				
STYLE	IT. INCLUDED	DESCRIPTION OR REMARKS	RECORDED	
			SIG	DATE
ST902475	001	EARTHING CONTACT	Sd/-	4.3.71

TOOL LIST		
ITEM	TOOL	DESCRIPTION
001	1497434	PRESS TOOL
001	1496292	PRESS TOOL FOR BENDING

			002	EARTH CONTACT 32X3.2TK X 123 LG PHOS BRZ STR				BP1211997014	NA	Kg	0.1058					
								BP12197								
			001	EARTHING CONTACT 32X3.2TK X 123 LG PHOS BRZ STR				BP1211997014	NA	Kg	0.1058					
								BP12197								
VAR00	65	75	78 79	25 27	29	58	59	60	77	29 31 34	45	55	58	65	72	
	REMARKS		VAR. NO.	ITEM NO.	DESCRIPTION		STD	DRAWING NO.		IT.NO.	MATL. CODE	UNIT	UNIT WT.			ZONE
										32 33	46	54	68	71		
										VAR.	MATL. SPEN.		QTY.			
→ CARD TYPE-3					28 → CARD TYPE-1					28 → CARD TYPE-2						

D92 REF.	SIGN. & DATE	0011496292PRESS TOOL FOR BENDING					ADDITIONAL INFORMATION					mRikn dk i-dkj ;k xk-gd@fj;kstuk dk uke TYPE OF PRODUCT OR NAME OF CUSTOMER/PROJECT					VM24					
							STATUS OF DRAWING															
							DISTRIBUTION OF PRINTS					 HAKjr gsOh bysfDV&dYl fyfeVsm HAKsiky BHARAT HEAVY ELECTRICALS LTD. BHOPAL					uke@NAME gLrk@SIGN fnaukd@DATE osfj_ dh la; k NO. OF VAR					
							O. COPY-----1 SWM-----3 TCX-----1										DRN tWpk CKD vuqeksfmr APPD					
INVENTORY NO.	REV.	DATE	ALTERED	CHECKED	APPROVED	DIVYA	REV.	DATE	ALTERED	CHECKED	APPROVED	foHAKx DEPT SWE	vu_ Vky_ uki dh Js.kh UNITAL.DIMS. GR.		vuqikr SCALE	HAKj fd_xk_-- WEIGHT (K.G.)	vis_ M&kbZax dk lanHAZ REF. TO ASSY. DRG.			en d_-- ITEM NO.	en_ la; k NO. OF ITEM	
																	35225001759					
																	vkjs[A d--DRAWING NO. D9277173					
																	i="Bk d--Bk. No. 01i="Bk d--Bk. No. 01					
																		EARTH CONTACT FOR BV3 OR 4 UNIT				11
						(DCA NO.-20241)						(DCA NO.-9777)										

DRG. NO. 35215001788

FINISH: -

- HOT DIP GALVANISED TO AA0673608 (0.030 TK.xMIN.) FOR ITEM 001 & 002.
- TIN PLATING TO AA0673602 (0.013 TK.) FOR ITEMS 003 & 004.

PLATING AREA: -

IT. 001,002 ,003 & 004 - 718 SQ. CM.

FINISHED WT. ITEM 003 & 004 - 1.685 KG.

				004	-				BP1201903890			1.695			
					50X6 TK X 635 LG. HARD CPR. ST				AA12003	NA	N.A.				
				003	-				BP1201903890			1.695			
					50X6 TK X 635 LG. HARD CPR. ST				AA12003	NA	Kg				
				002	-				AA1010308041			1.4954			
					50X6TK. X 635 LG. STR.STEEL FLAT				AA10108	NA	N.A.				
				001	-				AA1010308041			1.4954			
					50X6TK. X 635 LG. STR.STEEL FLAT				AA10108	NA	Kg				
VAR00	65	75	78 79	25 27	29	58 59	60	77	29 31	34	45	55 56	58	65	72
	REMARKS		VAR. NO.	ITEM NO.	DESCRIPTION	STD	DRAWING NO.	IT.NO.	VAR.	MATL. CODE	MATL. SPCN.	UNIT WT.	QTY.	GS	ZONE

28 → CARD TYPE-3

28 → CARD TYPE-1

28 → CARD TYPE-2

INVENTORY NO. 35215001788-04-01
SIGN. & DATE REF. DRG. NO.

REV. 06	DATE 19.08.21	ALTERED SKG	CHECKED AKHIL	APPROVED AD	REV. 05	DATE 29.12.10	ALTERED P.PARE	CHECKED AKHIL	APPROVED MAK	ADDITIONAL INFORMATION		mRikn dk i-dkj ; k xk-gd@fj;kstuk dk uke TYPE OF PRODUCT OR NAME OF CUSTOMER/PROJECT										
DEVELOPMENT VIEW FOR ITEM 001, 002, 003 & 004 CORRECTED.					WT. ADDED					STATUS OF DRAWING		VM-12										
(DCA NO. - 37250)					(DCA NO. 30135)					DISTRIBUTION OF PRINTS		HAKjr gsoh bysfDV&dYl fyfeVsM HAKsiky BHARAT HEAVY ELECTRICALS LTD. BHOPAL										
										O.COPY-----1 SWM-----3 TCX-----1		Bharat Heavy Electricals Ltd. Bhopal										
REV. 04	DATE 24.07.07	ALTERED P.PARE	CHECKED KSM	APPROVED MAK	REV. 03	DATE 06.02.04	ALTERED	CHECKED	APPROVED H.R.P.	REV. 02	DATE 25.12.02	ALTERED Sd/-	CHECKED Sd/-	APPROVED Sd/-	foHAKx DEPT SWE	vu_ Vky_ uki dh jshkh UNTOL.DIMS. GR.	AA0230208	1:1	HAKj fd_xk- WEIGHT (K.G.)	vis_ M&kbZax dk lanHAZ REF. TO ASSY. DRG.	en d- ITEM NO.	en_ la; k NO. OF ITEM
ITEM 3,4 & SHT. 2 ADDED VIEW SHIFTED TO SHT. 2					DRG. REDRAWN.					2 SLOTS 8x12 WERE 2 HOLES Ø8.		EARTH BAR				35215002008 15215001531		35215001788		015,016 023,024		004
(DCA NO. 26902)					(DCA)					(DCA 11821)						vksj[A d-drawing NO.		35215001788		06		
																i="B d- No. 01		i="Bksa dh la; NO. OF SHT. 02				

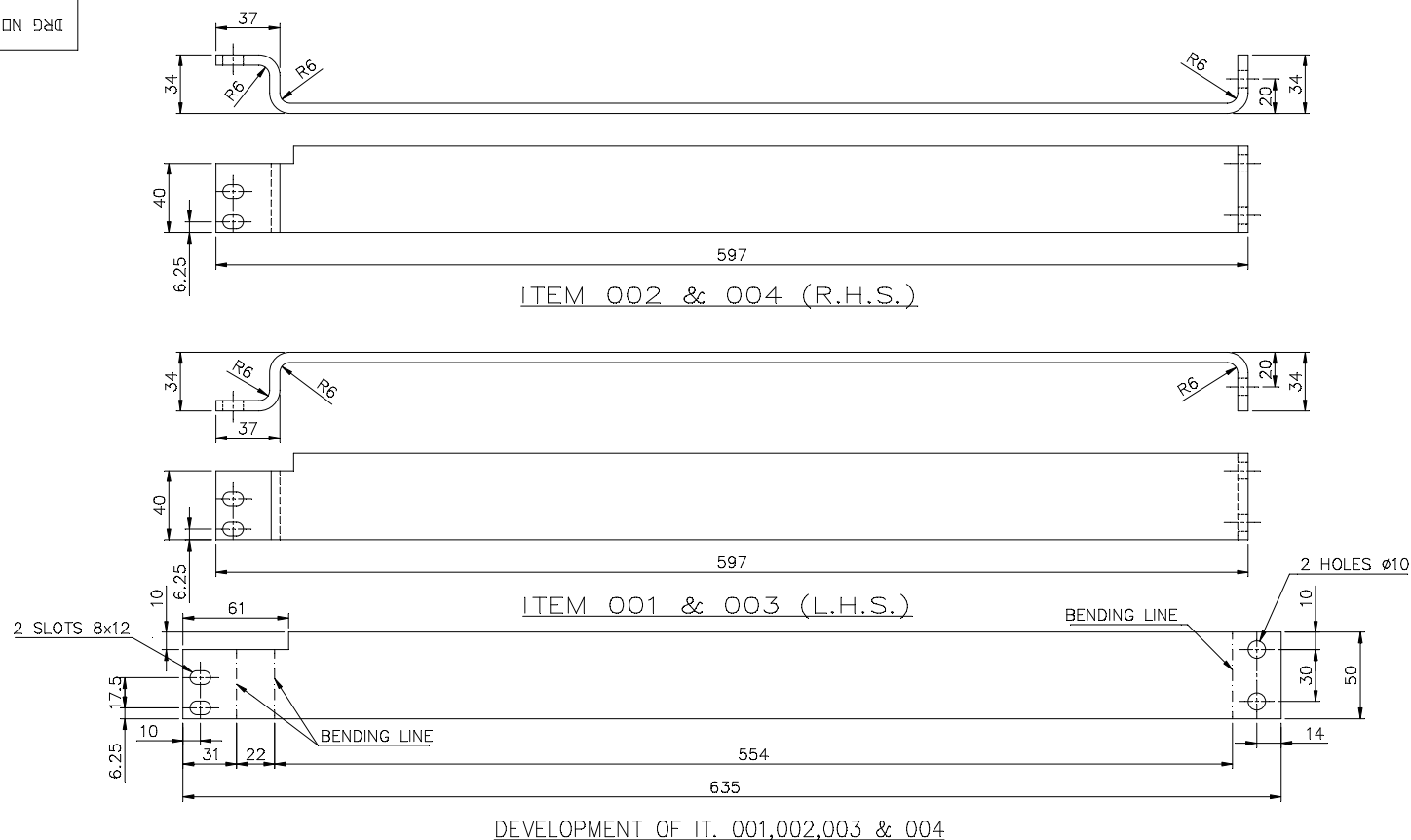
THE INFORMATION ON THIS DOCUMENT IS THE PROPERTY OF BHARAT HEAVY ELECTRICALS LIMITED. IT MUST NOT BE USED DIRECTLY OR INDIRECTLY IN ANY WAY DETRIMENTAL TO THE INTEREST OF THE COMPANY.

35215001788-R04-S02
REF.DRG.NO.

SIGN. & DATE

INVENTORY NO.

DRG NO 3 521 50 01788



DEVELOPMENT OF IT. 001,002,003 & 004

									KG.	
VAR 00	REMARKS	VAR NO.	ITEM NO.	DESCRIPTION	STD	DRAWING NO.	IT.NO.	MATERIAL CODE	A	UNIT WT.
							VAR	MATL. SPCL.	C	QTY

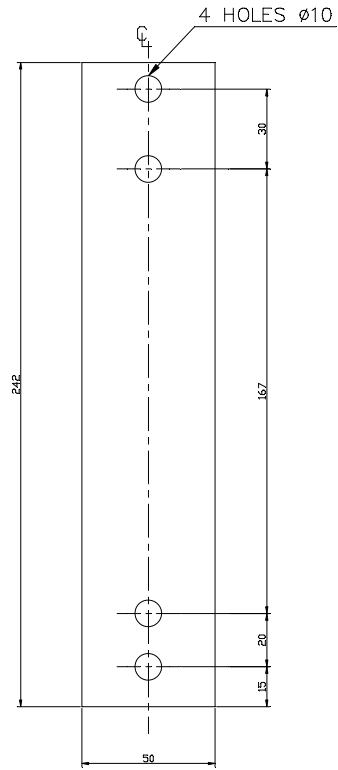
														ADDITIONAL INFORMATION				TYPE OF PRODUCT OR NAME OF CUST/PROJ										VM-12 (OPTIMISED)													
REV. 06		DATE 19.08.21		ALTERED CHECKED APPROVED		SKG AKHIL AD		REV. 05		DATE 29.12.10		ALTERED CHECKED APPROVED		P.PARE AKHIL MAK		STATUS OF DRAWING B				BHARAT HEAVY ELECTRICALS LIMITED BHOPAL				DRN CKD APPD		NAME		SIGN		DATE		NO. OF VAR									
																		--										--													
																		R.R.G.								Sd/-		31.10.90													
						DEVELOPMENT VIEW FOR ITEM 001, 002, 003 & 004 CORRECTED.								WT. ADDED				DISTRIBUTION OF PRINTS OFFICE COPY - 1 SWGR SHOPS - 3 TCX - 1								M.A.S.		Sd/-		31.10.90		-									
						(DCA NO. - 37250)								(DCA NO. 30135)																											
REV 04		DATE 24.07.07		DRN CKD APPD		P.PARE KSM MAK		REV 03		DATE 06.02.04		DRN CKD APPD		H.R.P.		REV 02				DATE 25.12.02		DRN CKD APPD		Sd/- Sd/- Sd/-		DEPT SWE		UN. TOL.DIM.GR.				SCALE 1:2.5		WEIGHT (KG.) -		REF TO ASSY 15215001531		ITEM MO. 015,016 023,024		NO. OF ITEM 004	
						-ITEM 3,4 & SHT. 2 ADDED -VIEW SHIFTED TO SHT. 2								DRG. REDRAWN.								2 SLOTS 8x12 WERE 2 HOLES Ø8.																			
						(DCA NO. 26902)								(DCA)								(DCA 11821)																			

THE INFORMATION ON THIS DOCUMENT IS THE PROPERTY OF BHARAT HEAVY ELECTRICALS LIMITED. IT MUST NOT BE USED DIRECTLY OR INDIRECTLY IN ANY WAY DETRIMENTAL TO THE INTEREST OF THE COMPANY.

SIGN. & DATE

INVENTORY NO.

DRG NO 3521 50 01879



ITEM 001

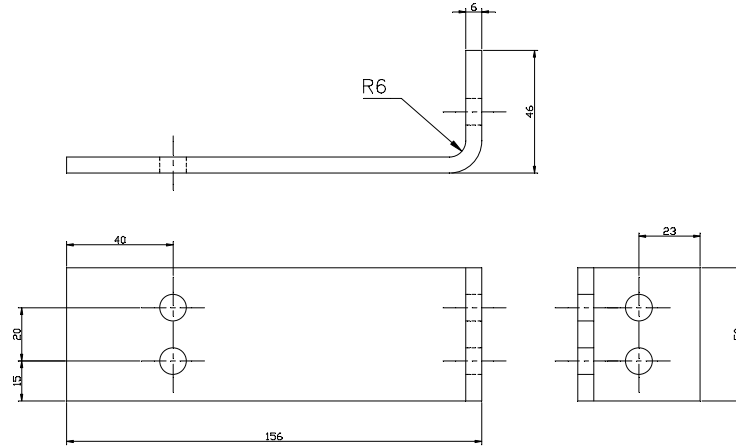
AREA OF PLATING: -

ITEM 001 - 277 SQ. MM.
ITEM 002 - 218 SQ. MM.

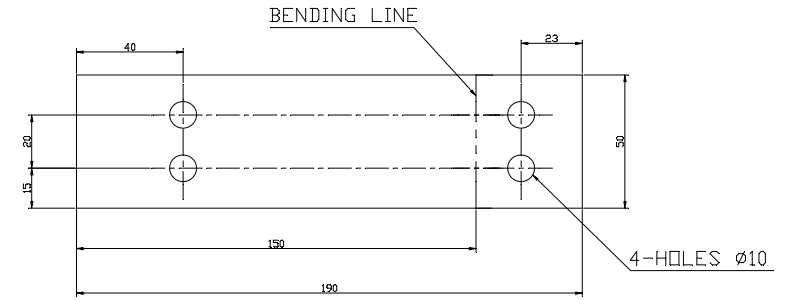
FINISH: —

- HOT DIP GALVANISED (0.030 TK. MIN.)
TO AA 0673608 FOR IT. 001 TO 004

FINISHED WT. ITEM 001 - 0.65 KG.
002 - 0.491 KG.

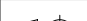


ITEM 002



DEVELOPMENT OT ITEM 002

			002	50 × 6 × 190 LG. H COPPER STRIP			BP1201903890		kg	0.507		
							AA12003			001		
			001	50 × 6 × 242 LG. H COPPER STRIP			BP1201903890		kg	0.646		
							AA12003			001		
VAR 00	REMARKS	VAR NO.	ITEM NO.	DESCRIPTION	STD	DRAWING NO.	IT.NO.	MATERIAL CODE	A	UNIT	UNIT WT.	
							VAR	MATL. SPCN.	C		QTY	

REF. DR.	FINISH: - - HOT DIP GALVANISED (0.030 TK. MIN.) TO AA 0673608 FOR IT. 001 TO 004				ADDITIONAL INFORMATION			TYPE OF PRODUCT OR NAME OF CUST/PROJ VM12 (OPTIMISED)									
	SIGN. & DATE	FINISHED WT. ITEM 001 - 0.65 KG. 002 - 0.491 KG.				STATUS OF DRAWING			<div><div><div>बी.एच.ई.एल.</div><div>BHEL</div></div><div>BHARAT HEAVY ELECTRICALS LIMITED BHOPAL</div></div>								
INVENTORY NO.						DISTRIBUTION OF PRINTS OFFICE COPY - 1 SWGR SHOPS - 3 TCX - 1			DRN CKD APPD				NAME SIGN DATE NO. OF VAR				
		REV.	DATE	ALTERED	P.PARE	REV	DATE	DRN	DEPT	UN. TOL. DIM. GR.		SCALE	WEIGHT (KG.)	REF TO ASSY	ITEM MO.	NO. OF ITEMS	
		01	29.12.10	CHECKED	AKHIL			CKD	SWE	M			1: 2	-	15215001531	-	002
		APPROVED				APPD				CODE	AA 0230208						
		WT. ADDED								TITLE				DRG NO		REV.	
		(DCA NO. 30136)								EARTH CONNECTION				3521 50 01879		01	
														SHT. NO.	01	NO. OF SHT.	01

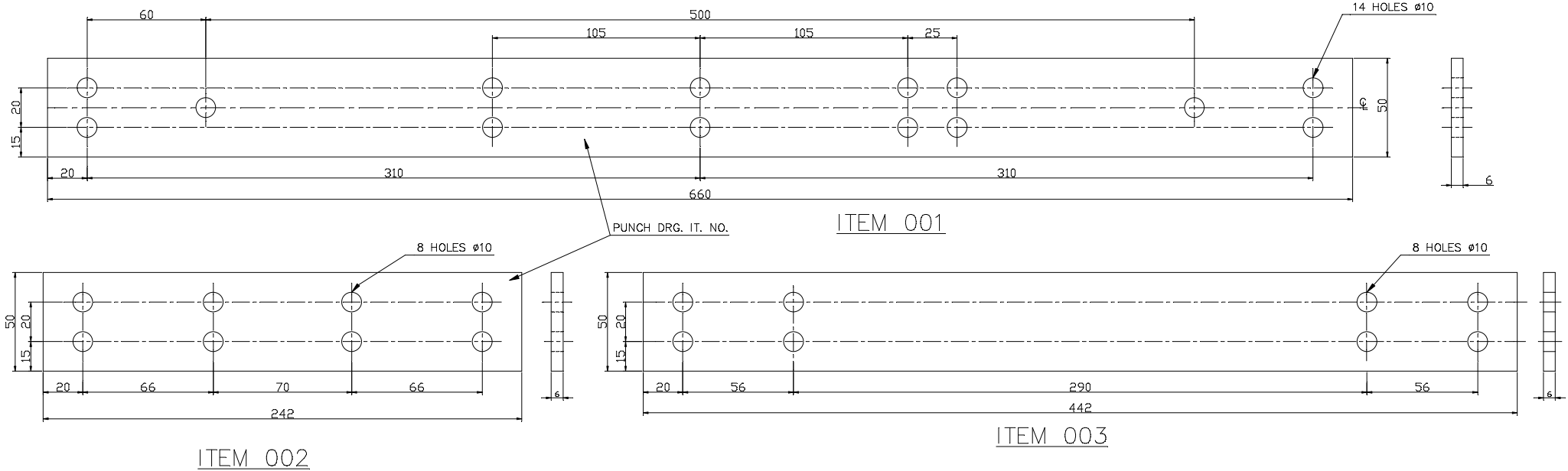
THE INFORMATION ON THIS DOCUMENT IS THE PROPERTY OF BHARAT HEAVY ELECTRICALS LIMITED. IT MUST NOT BE USED DIRECTLY OR INDIRECTLY IN ANY WAY DETRIMENTAL TO THE INTEREST OF THE COMPANY.

35215001878-R00-S01
REF.DRG.NO.

SIGN.& DATE

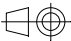
INVENTORY NO.

87810 09 179 3 DRG NO



FINISH:-
- TIN PLATING TO AA 0673613
(0.013 TK. TO 0.015 TK.) FOR IT.001 TO 003
- FINISHED WEIGHT ITEM-001 - 1.762 Kg
ITEM-002 - 0.613 Kg
ITEM-003 - 1.184 Kg

			003	50 x 6 x 442 LG. HARD COPPER STRIP			BP1201903890		KG.	1.184
							AA12003			001
			002	50 x 6 x 242 LG. HARD COPPER STRIP			BP1201903890		KG.	0.646
							AA12003			001
			001	50 x 6 x 660 LG. HARD COPPER STRIP			BP1201903890		KG.	1.762
							AA12003			001
VAR 00	REMARKS	VAR NO.	ITEM NO.	DESCRIPTION	STD	DRAWING NO.	IT.NO. VAR	MATERIAL CODE MATL. SPCN.	A C	UNIT QTY

ADDITIONAL INFORMATION				TYPE OF PRODUCT OR NAME OF CUST/PROJ										VM12 (OPTIMISED)			
STATUS OF DRAWING				B	<div><div><div>भारत भारी बिजली</div><div>BHARAT HEAVY ELECTRICALS LIMITED</div><div>BHOPAL</div></div></div>						DRN	NAME	SIGN	DATE	NO. OF VAR		
DISTRIBUTION OF PRINTS				OFFICE COPY - 1							SWGR SHOPS - 3	TCX - 1	CKD	K.S.M.	Sd/-	15.03.04	15.03.04
													APPD	H.R.P.	Sd/-	15.03.04	-
REV	DATE	DRN PARE		DEPT	SWE	UN. TOL.DIM.GR.		SCALE	WEIGHT (KG.)	REF TO ASSY		ITEM MO.	NO.OF ITEMS				
01	30.12.10	CKD AKHIL		CODE	409	M		1:2	-	35215002008			003				
		APPD MAK				AA 0230208											
				-WEIGHT ADDED.				TITLE						DRG NO		REV.	
								EARTH BAR						3 521 50 01878		03	
														SHT.NO.	01	NO.OF SHT.	01

REV 03	DATE 24.09.12	DRN CKD AKHIL APPD MAK	AKN CKD AKHIL APPD MAK	REV 02	DATE 20.06.11	DRN CKD AKHIL APPD MAK	S.D.MISHRA CKD AKHIL APPD MAK
DIM. 56 TO BE CHANGED TO 66 & DIM. 90 TO BE CHANGED TO 70 OF ITEM 002. (DCA NO. 31340)				ITEM NO. 003 ADDED & FINISH CHANGED TO TIN PLATING DCA NO. 30428			

7451/2024/HEP-SWM20900

THE INFORMATION ON THIS DOCUMENT IS THE PROPERTY OF BHARAT HEAVY ELECTRICALS LIMITED
IT MUST NOT BE USED DIRECTLY OR INDIRECTLY IN ANY WAY DETRIMENTAL TO THE INTEREST OF THE COMPANY

INVENTORY NO. 35216602179-01-01
SIGN. & DATE
REF. DRG. NO.

DRG. NO. 35216602179

-	001	001	001								014	EARTHING CONNECTION(50X6TK)		35216602175	003		NA	Kg	2.498																	
-	001	001	001								013	EARTHING CONNECTION		35216602174	005		NA	Kg	0.219																	
002	004	002	002	002	002	002	004	004	002		012	L-SUPPORT		35216602213	001		NA	Kg	0.053																	
-				001							011	EARTHING CONNECTION(50X6TK)		35216602176	002		NA	Kg	2.116																	
-					001						010	EARTHING CONNECTION(50X6TK)		35216602174	003		NA	Kg	1.403																	
-						001					009	EARTHING CONNECTION(50X6TK)		35216602175	002		NA	Kg	2.641																	
006	010	010	006	005	005	006	010	010	006		008	NUT HEX A M8-8				AA7151115024	NA	Kg	0.005																	
006	010	010	006	005	005	006	010	010	006		007	WASHER SPRING LOCK SC B8-ST				AA7164002053	NA	Kg	0.002																	
006	010	010	006	005	005	006	010	010	006		006	WASHER MCD 8.4-ST				AA7161001056	NA	Kg	0.002																	
006	010	010	006	005	005	006	010	010	006		005	SCRU HEX A M8X20-8.8				AA7121123118	NA	Kg	0.013																	
							001				004	EARTHING CONNECTION(40X5TK.)		35216602176	001		NA	Kg	1.411																	
								001			003	EARTHING CONNECTION(40X5TK.)		35216602174	001		NA	Kg	0.925																	
						001	001	001	001		002	EARTHING CONNECTION		35216602174	002		NA	Kg	0.234																	
							001	001	001		001	EARTHING CONNECTION(40X5TH.)		35216602175	001		NA	Kg	1.835																	
VAR09	VAR08	VAR07	VAR06	VAR05	VAR04	VAR03	VAR02	VAR01	VAR00	65	REMARKS	75	VAR. NO.	78	79	25	27	29	DESCRIPTION	58	59	60	DRAWING NO.	77	29	31	34	MATL. CODE	45	55	56	58	UNIT WT.	65	72	ZONE
																								32	33	46	MATL. SPCN.	54	UNIT	57	68	QTY.	71	73		

28 → CARD TYPE-3

28 → CARD TYPE-1

28 → CARD TYPE-2

REV.	DATE	ALTERED	AR	Sd/-	REV.	DATE	ALTERED	MKN	Sd/-
05	30.01.15	CHECKED	AKHIL	Sd/-	04	12.11.12	CHECKED	AKHIL	Sd/-
		APPROVED	MAK	Sd/-			APPROVED	MAK	Sd/-

	VAR 09 ADDED.		-VAR. 04 & 05 UPDATED & CT CH. EARTHING CONNECTION DELETED.
	(DCA. NO. 32884)		(DCA. NO. 31436)

ADDITIONAL INFORMATION

STATUS OF DRAWING

DISTRIBUTION OF PRINTS

O.COPY-----1
SWM-----3
TCX-----1

mRikn dk i-dkj ;k
xk-gd@ifj;kstuk dk uke
TYPE OF PRODUCT OR
NAME OF CUSTOMER/PROJECT

VM-12(820W)



HAKjr gsoh bysfDV&dYl fyfeVsm
HAKsiky
BHARAT HEAVY ELECTRICALS LTD.
BHOPAL

uke@NAME	gLrk@SIGN	fnaukd@ATE	osfj_ dh la[:k NO. OF VAR
SASHI	SASHI	29/12/2003	
MANI	Sd/-	30/12/2003	08
PATEL	PATEL	10/01/2005	

REV.	DATE	ALTD	AKHIL	Sd/-	REV.	DATE	ALTERED	Sd/-	REV.	DATE	ALTERED	Sd/-
03	30.12.10	CHKD	AKHIL	Sd/-	02	10.11.06	CHECKED	Sd/-	01	02.09.05	CHECKED	Sd/-
		APPD	MAK	Sd/-			APPROVED	Sd/-			APPROVED	Sd/-

		WEIGHT UPDATED		ITEM-013 TO 016 AND VAR-06 TO 08 ADDED		ITEM-009 TO 012,VAR-03 TO 05 & SHEET-02 ADDED
		(DCA-30148)		(DCA-26257)		(DCA-23829)

foHAKx DEPT SWE	vu_ Vky_ uki dh Js.kh UNTOL.DIMS. GR.		vuqikr SCALE 1:1	HAKj fd_xk- WEIGHT (K.G.)	vis_ M&kbZax dk lanHAZ REF. TO ASSY. DRG.	en d- ITEM NO.	en_ la[:k NO. OF ITEM
dkSM CODE 409							016

'kh"AZ@OLE	EARTHING ARRGT.FOR STD.CT.CHMBR.+ EXT. CHMBR.	vkjs[A d-@DRAWING NO. 35216602179	iqu_@REV 05
------------	--	--------------------------------------	----------------

i="B d-@No. 01 i="Bkso dh la[:k, NO. OF SHT. 02

7451/2024/HEP-SWM20900

THE INFORMATION ON THIS DOCUMENT IS THE PROPERTY OF BHARAT HEAVY ELECTRICALS LIMITED. IT MUST NOT BE USED DIRECTLY OR INDIRECTLY IN ANY WAY DETRIMENTAL TO THE INTEREST OF THE COMPANY.

09	EARTHING CONNECTION	FOR 524 REAR EXT. CHAMBER	1NO.50X6TH.BR.ST.	-	409541142	25216601694	
08	EARTHING CONNECTION	820DX820X1835	1NO.50X6TH.BR.ST.	-	409560161	25216601694	
07	EARTHING CONNECTION	<524DX820X1835	1NO.50X6TH.BR.ST.	-	409560160	25216601694	
06	EARTHING CONNECTION	-	1NO.50X6TH.BR.ST.	-	409560159	25216601694	
05	EARTHING CONNECTION	820DX820X1835	1NO.50X6TH.CU.	-	409550212	25216601694	
04	EARTHING CONNECTION	<524DX820X1835	1NO.50X6TH.CU.	-	409550211	25216601694	
03	EARTHING CONNECTION	-	1NO.50X6TH.CU.	-	409550210	25216601694	
02	EARTHING CONNECTION	820DX820X1835	1NO.40X5TH.CU.	-	409540083	25216601694	
01	EARTHING CONNECTION	<524DX820X1835	1NO.40X5TH.CU.	-	409540082	25216601694	
00	EARTHING CONNECTION	-	1NO.40X5TH.CU.	-	409540081	25216601694	
VAR NO.	DESCRIPTION	EXTENSION CHAMBER SIZE	CONNECTION SIZE	RATED AMPS	GES. NO.	ASSY. REF.	REMARK

—	001										016	EARTHING CONNECTION(50X6TK)		35216602176	003		NA	kg	2.001			
001		001									015	EARTHING CONNECTION(50X6TK)		35216602174	004		NA	kg	1.295			
VAR09	VAR08	VAR07	VAR06	VAR05	VAR04	VAR03	VAR02	VAR01	VAR00	REMARKS	VAR. NO.	ITEM NO.	DESCRIPTION	STD	DRAWING NO.	IT.NO.	MATL. CODE	MATL. SPCN.	UNIT	UNIT WT.	QTY.	ZONE

28 → CARD TYPE-3

28 → CARD TYPE-1

28 → CARD TYPE-2

REV. 05
DATE 30.01.15
ALTERED
AR AKHIL
Sd/-
CHECKED
AKHIL
Sd/-
APPROVED
MAK
Sd/-
-VAR 009 ADDED.
(DCA. NO. 32884)

REV. 04
DATE 12.11.12
ALTERED
MKN
Sd/-
CHECKED
AKHIL
Sd/-
APPROVED
MAK
Sd/-
-VAR. 04 & 05 UPDATED & CT CH. EARTHING CONNECTION DELETED.
(DCA. NO. 31436)

REV. 03
DATE 30.12.10
ALTD AKHIL
CHKD AKHIL
APPD MAK
Sd/-
Sd/-
Sd/-
WEIGHT UPDATED
(DCA-30148)

REV. 02
DATE 10.11.06
ALTERED
Sd/-
CHECKED
Sd/-
APPROVED
Sd/-
ITEM-013 TO 016 AND VAR-06 TO 08 ADDED
(DCA-26257)

REV. 01
DATE 02.09.05
ALTERED
Sd/-
CHECKED
Sd/-
APPROVED
Sd/-
ITEM-009 TO 012,VAR-03 TO 05 & SHEET-02 ADDED
(DCA-23829)

ADDITIONAL INFORMATION
STATUS OF DRAWING
DISTRIBUTION OF PRINTS
O.COPY-----1
SWM-----3
TCX-----1

mRikn dk i-dkj ;k
xk-gd@fj;kstuk dk uke
TYPE OF PRODUCT OR
NAME OF CUSTOMER/PROJECT
VM-12(820W)
HAKjr gsob bysfDV&dYl fyfeVsm
HAKsiky
BHARAT HEAVY ELECTRICALS LTD.
BHOPAL

DRN
tWpk
ckd
vuqeksfmr
APPD

uqqr SCALE
1:1

HAKj fd_xk-
WEIGHT (K.G.)

vis_ M&kbZax dk lanHAZ
REF. TO ASSY. DRG.

en d-
ITEM NO.

en_ laj;k
NO. OF
VAR
08

foHAKx
DEPT SWE
dksM
CODE 409

vu_ Vky_ uki dh Js.kh
UNTIL.DIMS. GR.

vkjs[A d-
DRAWING NO.
35216602179

i="B d-
No. 02

i="Bksa dh laj;k
No. OF SHT. 02

Technical drawing of a mechanical part showing three views: top, front, and side.

Top View: A rectangular plate with a width of 6 and a length of 550. The part is labeled 006.

Front View: A rectangular plate with a height of 5 and a length of 550. The part is labeled 001.

Side View: A rectangular plate with a width of 40 and a length of 550. The part is labeled 002. This view shows 11 holes with a diameter of 10 and 2 slots with dimensions 10x20. A note "SEE NOTE" points to the side view.

Dimensions:

- Top View: 6 (width), 550 (length)
- Front View: 5 (height), 550 (length)
- Side View: 40 (width), 550 (length)
- Holes: 11 HOLES $\varnothing 10$
- Slots: 2 SLOTS 10x20
- Note: SEE NOTE

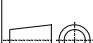
			006	STR.STEEL FLAT 40X6TK X 550 LG STR.STEEL FL				BP1010308998		NA	Kg	1.036		
			005	STR.STEEL FLAT 50X6TK X 93 LG STR.STEEL FLA				AA10108		NA	Kg			
			004	STR.STEEL FLAT 50X6TK X 550 LG STR.STEEL FL				AA1010308041		NA	Kg	0.219		
								AA10108		NA	Kg			
			003	HARD CPR. STRIP 50X6TK X 550 LG HARD CPR. STRI				BP1201903890		NA	Kg	1.295		
								AA12003		NA	Kg			
			002	HARD CPR. STRIP 50X6TK X 93 LG HARD CPR. STRIP				BP1201903890		NA	Kg	1.403		
								AA12003		NA	Kg			
			001	HARD CPR. STRIP 40X5TK X 550 LG. HARD CPR. STR				AA1201903068		NA	Kg	0.248		
								AA12003		NA	Kg			
VAR00	REMARKS	VAR. NO.	ITEM NO.	DESCRIPTION	STD	DRAWING NO.	IT.NO.	MATL. CODE	C.I.A.	UNIT	UNIT WT.	QTY.	G.S.	ZONE

INVENTORY NO.	SIGN. & DATE
---------------	--------------

	REV.	DATE	ALTD	
	03	29.12.06	CKD	
			APPD	
		GALVENISING NOTE ADDED FOR STEEL ITEMS. BRT.S.FLAT REPLACED BY STR.S.FLAT FOR ITEMS 004,005&006 (DCA-26522)		

REV. 04	DATE 30.12.10	ALTD CKD APPD	AKHIL AKHIL MAK
WEIGHT UPDATED (DCA-30146)			
REV. 02	DATE ⁰¹ 10.11.06	ALTERED CHECKED APPROVED	
ITEMS-004 TO 006 ADDED (DCA-26258)			

DISTRIBUTION OF PRINTS		
O.COPY-----1		
SWM-----3		
TCX-----1		
REV.	DATE	ALTERED
01	02.09.05	CHECKED
		APPROVED
	ITEM-002 REDESIGNED	
	ITEM-003 & SHEET-02 ADDED	
	(DCA-23832)	

<div><div>बीएचईएल</div><div>BHEL</div></div>		HAKjr gsoh bysfDV&dYl fyfeVsm HAKsiky BHARAT HEAVY ELECTRICALS LTD. BHOPAL				ukeNAME		glrk SIGN		fnaukdDATE		osfj_dh laq;k NO. OF VAR					
						DRN		SASHI		SASH#		29/12/2003		NO. OF VAR			
						tWpk CKD		MANI		Sa/-		30/12/2003					
						vuqesfnr APDID		PATEL		PATEL		10/01/2005					
foHAkx DEPT SWE		vu_vky_uki_dh Js.kh UNTLD.DMS. GR.				vuqkr SCALE		HAKJ fd_xk_ WEIGHT (K.G.)		vis_M&kbZax dk lanHAZ REF. TO ASSY. DRG.		en_d_ ITEM NO.		en_la;k NO. OF ITEM			
dksM CODE 409				1:1													
'kh"AZBLE														vksj[A d-drawing NO.		iquREV	
EARTHING CONNECTION														35216602174		04	
														i="B d-00. No. 01		i="Bksa dh laq;00 OF SHT. 02	

DRG. NO. 35216602174

NOTE: -

PUNCH DRG.NO. IT. NO./VAR.NO. AT THIS LOCATION

FINISH: -

1-FOR TIN PLATING REFER SG14610 AND ENGG.SPEC./MID TO ITEMS 001,002&003

2-HOT DIP GALVANISED (0.030 TK. MIN.) TO AA 0673608 FOR IT. 004,005&006

FINISHED WEIGHT: Item-001---0.925 Kg
 Item-002---0.234 Kg
 Item-003---1.414 Kg

UNSPECIFIED TOLERANCES SHALL BE: -

FOR SHEARING OF FLATS AS PER AA0230409

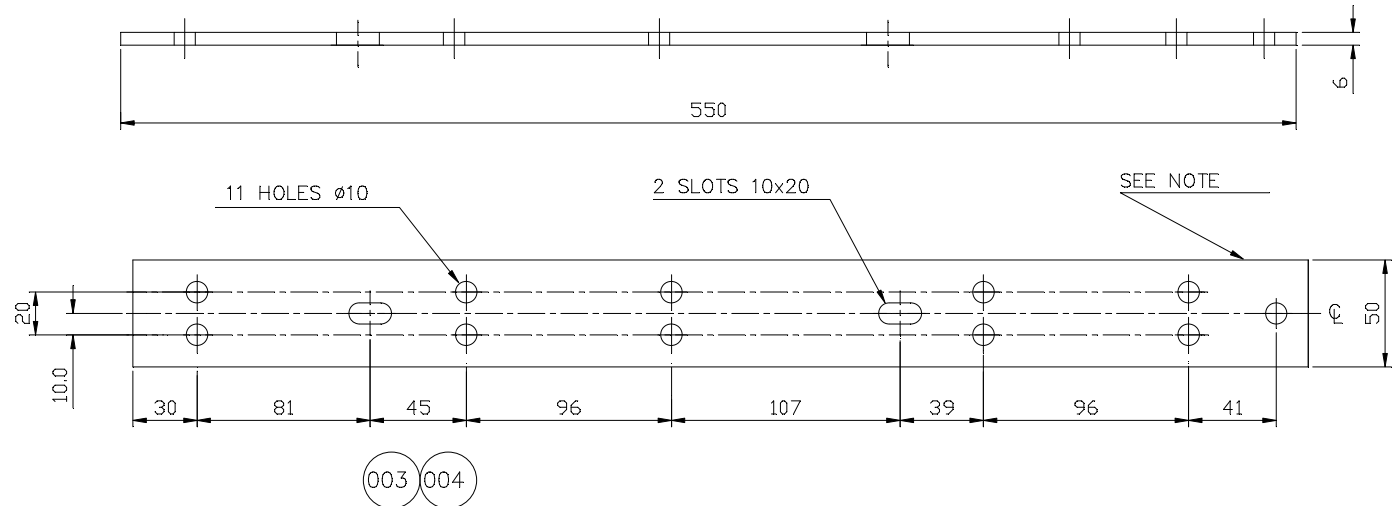
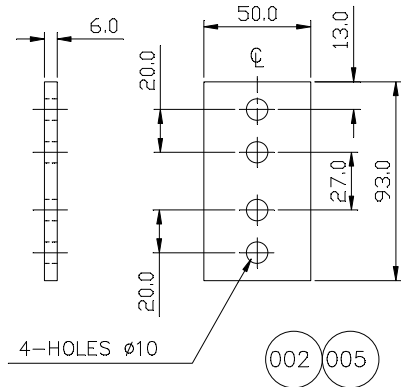
FOR MACHINING MEDIUM AA0230208.

AREA OF PLATING: -

FOR ITEM 001&006- 495.104 sq.cm.

FOR ITEM 003&004- 622.00 sq.cm.

FOR ITEM 002&005- 110.00 sq.cm.



35216602174-01-02

REF. DRG. NO.

SIGN. & DATE

INVENTORY NO.

ADDITIONAL INFORMATION

STATUS OF DRAWING

DISTRIBUTION OF PRINTS

O.COPY-----1
 SWM-----3
 TCX-----1

mRikn dk i-dkj ; k
 xk-gd@fj;kstuk dk uke
 TYPE OF PRODUCT OR
 NAME OF CUSTOMER/PROJECT

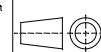
VM-12(820W)



HAKjr gsoh bysfDV&dYl fyfeVsM
 HAKsiky
 BHARAT HEAVY ELECTRICALS LTD.
 BHOPAL

foHAKx
 DEPT SWE
 dksM
 CODE 409

vu_ Vky_ uki dh Js.kh
 UNTOL.DIMS. GR.



vuqjkr
 SCALE
 1:1

HAKj fd_xk_
 WEIGHT (K.G.)

vis_ M&kbZax dk lanHAZ
 REF. TO ASSY. DRG.

en d_
 ITEM NO.

en_ la;k
 NO. OF
 ITEM

'kh"AZA

EARTHING CONNECTION

vksjs[A d-d

DRAWING NO.
35216602174

iqu_

OF SHEET
04

i="B d-001 No. 02

i="Bksa dh la;k; NO. OF SHT. 02

REV.	DATE	ALTD	AKHIL
04	30.12.10	CKD	AKHIL
		APPD	MAK

WEIGHT UPDATED
 (DCA-30146)

REV.	DATE	ALTERED
02	10.11.06	CHECKED
		APPROVED

ITEMS-004 TO 006 ADDED
 (DCA-26258)

REV.	DATE	ALTERED
01	02.09.05	CHECKED
		APPROVED

ITEM-002 REDESIGNED
 ITEM-003 & SHEET-02 ADDED
 (DCA-23832)

REV.	DATE	ALTD
03	29.12.06	CKD
		APPD

GALVENISING NOTE ADDED FOR
 STEEL ITEMS.
 BRT.S.FLAT REPLACED BY STR.S.FLAT
 FOR ITEMS 004,005&006
 (DCA-26522)

DRG. NO. 35216602175

SEE NOTE

6 FOR ITEM 004

5

40

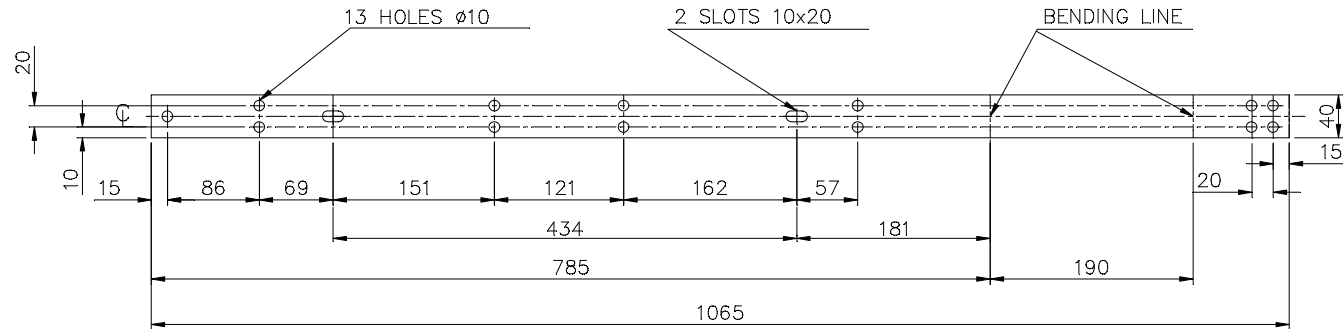
789

434

186

198

001004



DEVELOPMENT OF IT. 001&004

			004	STR. STEEL FLAT 40X6TK. X 1065 LG STR. STEEL FL.			BP1010308998			2.006		
			003	STR. STEEL FLAT 50X6TK. X 1061 LG STR. STEEL FL.			AA10108	NA	kg	2.498		
			002	HARD CPR. STRIP 50X6TK X 1061 LG. HARD CPR. ST			BP1201903890	NA	kg	2.833		
			001	HARD CPR. STRIP 40X5TK X 1065 LG. HARD CPR. ST			AA1201903068	NA	kg	1.896		
VAR00	REMARKS	VAR. NO.	ITEM NO.	DESCRIPTION	STD	DRAWING NO.	IT. NO.	MATL. CODE	UNIT WT.	QTY.	GS	ZONE

28 → CARD TYPE-3

28 → CARD TYPE-1

28 → CARD TYPE-2

ADDITIONAL INFORMATION

mRikn dk i-dkj ; k
 xk-gd@fj; kstuk dk uke
 TYPE OF PRODUCT OR
 NAME OF CUSTOMER/PROJECT

VM-12(820W)

STATUS OF DRAWING

DISTRIBUTION OF PRINTS

O.COPY-----1
 SWM-----3
 TCX-----1



HAKjr gsoh bysfDV&dYl fyfeVsm
 HAKsiky
 BHARAT HEAVY ELECTRICALS LTD.
 BHOPAL

uke@NAME	gLrk@SIGN	fnaukd@ATE	osfj_ dh
SASHI	SASHI	29/12/2003	IQ: k
MANI	MANI	30/12/2003	NO. OF VAR
PATEL	PATEL	10/01/2005	—

REV. 04	DATE 30.12.10	ALTD CKD APPD	AKHIL AKHIL MAK
WEIGHT UPDATED (DCA-30147)			

35216602175-01-01

REF. DRG. NO.

SIGN. & DATE

INVENTORY NO.

REV. 03	DATE 29.12.06	ALTD CKD APPD	
GALVENISING NOTE ADDED FOR STEEL ITEMS. BRT.S.FLAT REPLACED BY STR.S.FLAT FOR ITEMS 003&004 (DCA-26523)			

REV. 02	DATE 02.09.05	ALTERED CHECKED APPROVED	
ITEMS-003 & 004 ADDED (DCA-26259)			

REV. 01	DATE 02.09.05	ALTERED CHECKED APPROVED	
ITEM-002 & SHEET-02 ADDED (DCA-23831)			

foHAKx DEPT SWE	vu_ Vky_ uki dh Js.kh UNTOL.DIMS. GR.	vuqjkr SCALE 1:5	HAKj fd_xk_ WEIGHT (K.G.)	vis_ M&kbZax dk lanHAZ REF. TO ASSY. DRG.	en d_ ITEM NO.	en_ IQ: k NO. OF ITEM
dkm CODE 409	'kh"AZA			vkjs[A d-d		iqu_ EV
EARTHING CONNECTION				35216602175	04	
i="B d-01		i="Bksa dh IQ: k OF SHT. 02				

DRG. NO. 35216602175

NOTE: -

PUNCH DRG.NO. IT. NO./VAR.NO. AT THIS LOCATION

FINISH: -

1-FOR TIN PLATING REFER SG14610 AND ENGG.SPEC./MID TO ITEMS 001 & 002

2-HOT DIP GALVANISED (0.030 TK. MIN.) TO AA 0673608 FOR IT. 003 & 004

FINISHED WEIGHT: ITEM-001---1.835 Kg

ITEM-002---2.722 Kg

UNSPECIFIED TOLERANCES SHALL BE : -

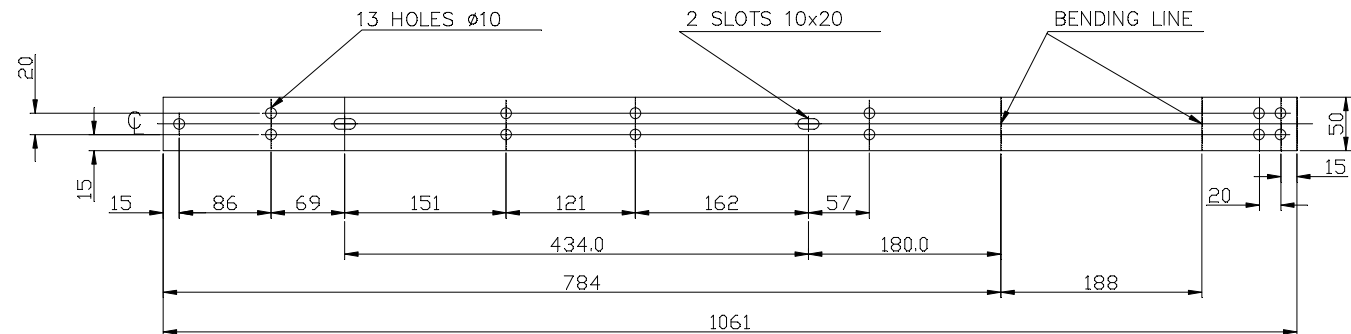
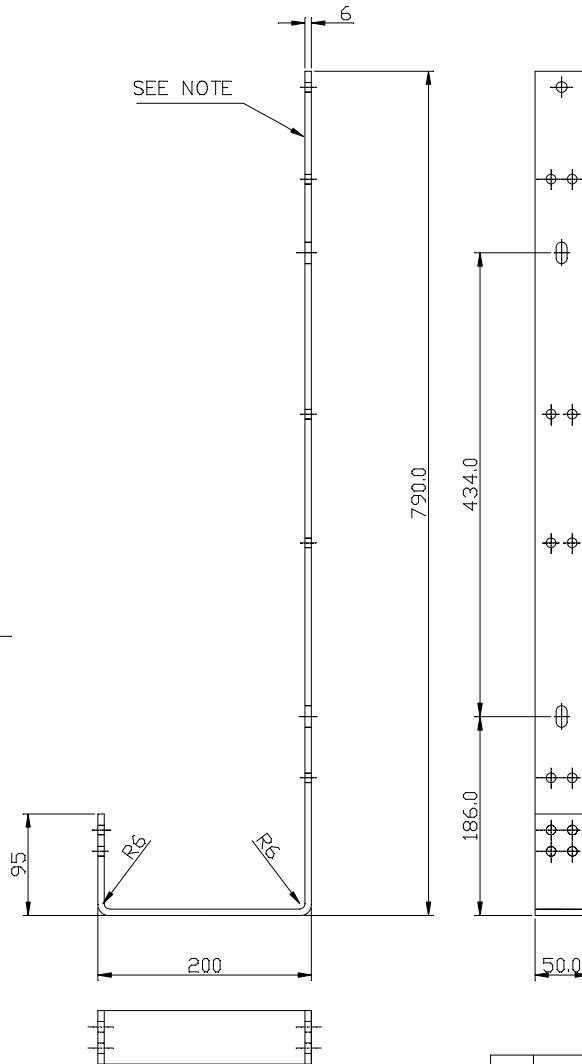
FOR SHEARING OF FLATS AS PER AA0230409

FOR MACHINING MEDIUM AA0230208.

AREA OF PLATING: -

FOR ITEM 001 & 004 - 960.5 sq.cm.

FOR ITEM 002 & 003 - 1194.00 sq.cm.



DEVELOPMENT OF IT. 002&003

002003

REV.	DATE	ALTD	AKHIL
04	30.12.10	CKD	AKHIL
		APPD	MAK

WEIGHT UPDATED
(DCA-30147)

ADDITIONAL INFORMATION

STATUS OF DRAWING

DISTRIBUTION OF PRINTS

O.COPY-----1
SWM-----3
TCX-----1mRikn dk i-dkj ;k
xk-gd@fj;kstuk dk uke
TYPE OF PRODUCT OR
NAME OF CUSTOMER/PROJECT

VM-12(820W)

HAKjr gsoh bysfDV&dYl fyfeVsMouk;k
HAKsiky
BHARAT HEAVY ELECTRICALS LTD.
BHOPAL

uke@NAME	gLrk@SIGN	fnaukd@DATE	osfj_-dh
MANI	sa/-	07/09/2005	la[-k
MANI	sa/-	07/09/2005	NO. OF VAR

35216602175-01-02
REF. DRG. NO.

SIGN. & DATE

INVENTORY NO.

REV.	DATE	ALTD	CKD	APPD
03	29.12.06			

GALVENISING NOTE ADDED FOR
STEEL ITEMS.
BRT.S.FLAT REPLACED BY STR.S.FLAT
FOR ITEMS 003&004
(DCA-26523)

REV.	DATE	ALTERED	CHECKED	APPROVED
02	02.09.05			

ITEMS-003 & 004 ADDED
(DCA-26259)

REV.	DATE	ALTERED	CHECKED	APPROVED
01	02.09.05			

ITEM-002 & SHEET-02 ADDED
(DCA-23831)

foHAKx DEPT SWE	vu_- Vky_- uki dh Js.kh UNTOL.DIMS. GR.	vuqjkr SCALE	HAKj fd_xk_- WEIGHT (K.G.)	vis_- M&kbZax dk lanHAZ REF. TO ASSY. DRG.	en d_- ITEM NO.	en_- la[-k NO. OF ITEM
dkm CODE 409		1:1				

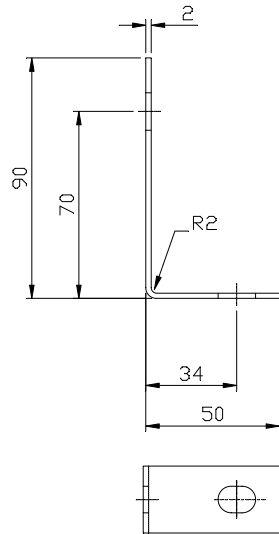
'kh"AZA@LE
EARTHING CONNECTION

vkjs[A d-@DRAWING NO.
35216602175

iqu_-@EV
04

i="B d-@No. 02 i="Bksa dh la[-k No. OF SHT. 02

DRG. NO. 35216602213



001

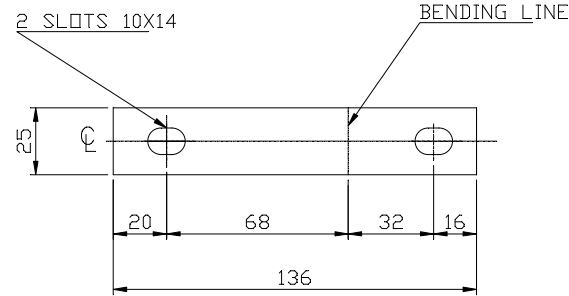
FINISH: -EPOXY POLYSTER POWDER COATING TO AA 0674124
FOR SHADE NO. REFER PO/MID. FOR ITEM-001AREA OF PLATING: -

FOR ITEM 001- 99.500 sq.cm.

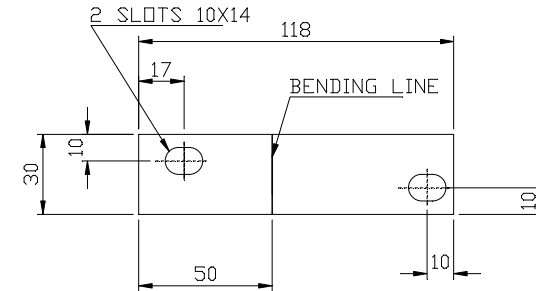
FOR ITEM 002- 76.72 sq.cm.

UNSPECIFIED TOLERANCES SHALL BE: -FOR SHEARING OF FLATS AS PER AA0230409
FOR MACHINING MEDIUM AA0230208.NOTE: -

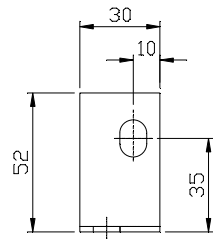
PUNCH DRG.NO. IT. NO./VAR.NO. AT THIS LOCATION



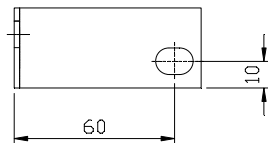
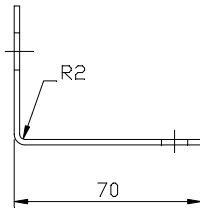
DEVELOPMENT OF IT. 001



DEVELOPMENT OF IT. 002



002



		002	H.R.C.S. SHEET 2TK X 30X118 LG. H.R.C.S. SHEE				AA1011713110		NA	kg	0.06		
		001	H.R.C.S. SHEET 2TK X 25X136 LG. H.R.C.S. SHEE				AA1011713110		NA	kg	0.053		
65	75	78 79	25 27 29	58	59	60	77	29 31 34	45	55 56 57	58	65 72	
REMARKS	VAR. NO.	ITEM NO.	DESCRIPTION	STD	DRAWING NO.	IT.NO.	VAR.	MATL. CODE	MATL. SPCN.	C I A UNIT	UNIT WT.	QTY.	GS ZONE

28 → CARD TYPE-3

28 → CARD TYPE-1

28 → CARD TYPE-2

ADDITIONAL INFORMATION

mRikn dk i-dkj ; k
xk-gd@fj;kstuk dk uke
TYPE OF PRODUCT OR
NAME OF CUSTOMER/PROJECT

STATUS OF DRAWING

DISTRIBUTION OF PRINTS

O.COPY-----1
SWM-----3
TCX-----1HAKjr gsoh bysfDV&dYl fyfeVsm
HAKsiky
BHARAT HEAVY ELECTRICALS LTD.
BHOPAL

uke@NAME	gLrk@SIGN	fnaukd@ATE	osfj_ dh
P.PARE		07/09/2005	lo[-k
K.S.MANI			NO. OF VAR

35216602213-01-1

SIGN. & DATE

INVENTORY NO.

REV. DATE ALTERED
CHECKED
APPROVEDREV. DATE ALTERED
CHECKED
APPROVED

ITEM-002 ADDED.

(CN-27571)

foHAKx
DEPT SWE
dksM
CODE 409vu_ Vky_ uki dh Js.kh
UNTOL.DIMS. GR.vuqjkr
SCALE
1:1HAKj fd_xk-
WEIGHT (K.G.)vis_ M&kbZax dk lanHAZ
REF. TO ASSY. DRG.en d-
ITEM NO.vkjs[A d-
DRAWING NO.

35216602213

i="B d-
No. 1i="Bksa dh la[-
No. OF SHT. 1

