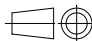


	001	ø25 x 13 Lg. ALUMINIUM ALLOY RODS	—	AA 123 30	—	0.015																
65	7525 27 29	ITEM NO.	58 59 34	MATL. CODE	45 55 56 58	UNIT W.T.																
REMARKS		DESCRIPTION	46	MATL. SPCN.	54	QTY.																
28 → CARD TYPE-3		28 → CARD TYPE-1		28 → CARD TYPE-2																		
<div><div>बीएचईल</div><div>BHEL</div></div>		HAKjr gsoh bysDV&hdYl fyfeVsM HAKsiky BHARAT HEAVY ELECTRICALS LTD. BHOPAL		<table><tr><td>uke NAME</td><td>qlrk SIGN</td><td>fnugkd DATE</td><td>osfj dh la; k NO. OF VAR.</td></tr><tr><td>auk;k DRY</td><td>SKG</td><td>Sd/—</td><td>05.07.23</td></tr><tr><td>tkapk CKE</td><td>SUMIT</td><td>Sd/—</td><td>05.07.23</td></tr><tr><td>vugaksfnr APP'D</td><td>AD</td><td>Sd/—</td><td>05.07.23</td></tr></table>		uke NAME	qlrk SIGN	fnugkd DATE	osfj dh la; k NO. OF VAR.	auk;k DRY	SKG	Sd/—	05.07.23	tkapk CKE	SUMIT	Sd/—	05.07.23	vugaksfnr APP'D	AD	Sd/—	05.07.23	—
uke NAME	qlrk SIGN	fnugkd DATE	osfj dh la; k NO. OF VAR.																			
auk;k DRY	SKG	Sd/—	05.07.23																			
tkapk CKE	SUMIT	Sd/—	05.07.23																			
vugaksfnr APP'D	AD	Sd/—	05.07.23																			
foHAK; DEPT SWE	vw Vky_u ki dh js.kh UNTEL.DIMS. GR. M AA 0230205		vugjkr SCALE 1:1	HAKj fd_xk— WEIGHT (K.G.)	vs_M&kbZox dk lanHAZ REF. TO ASSY. DRG.	en d— ITEM NO.	en la; k NO. OF ITEM															
dkSM CODE 409						001	001															
'Ah"AZda				vksjS[A d—BONG NO. 45212001606		la; k REV.																
BUSH				i="B d—SOF. No. 01		i="Bksa dh la; k NO OF SHT. 01																

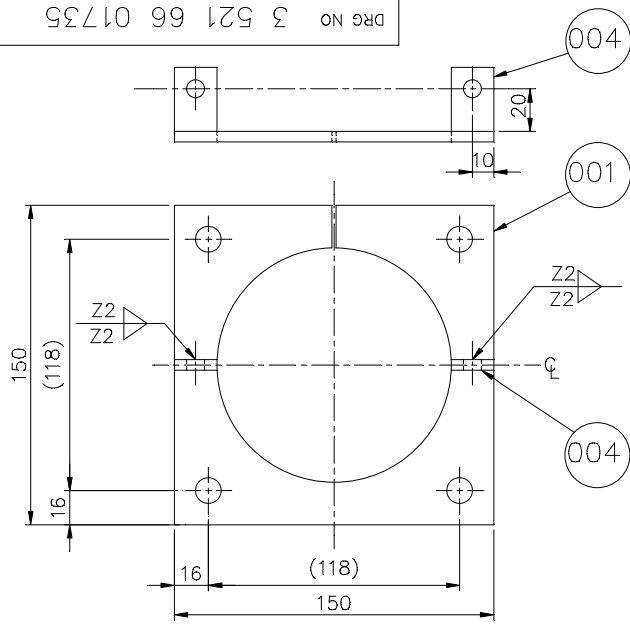
THE INFORMATION ON THIS DOCUMENT IS THE PROPERTY OF BHARAT HEAVY ELECTRICALS LIMITED. IT MUST NOT BE USED DIRECTLY OR INDIRECTLY IN ANY WAY DETRIMENTAL TO THE INTEREST OF THE COMPANY.

35216601735-R04-S02
REF.DRG.NO.

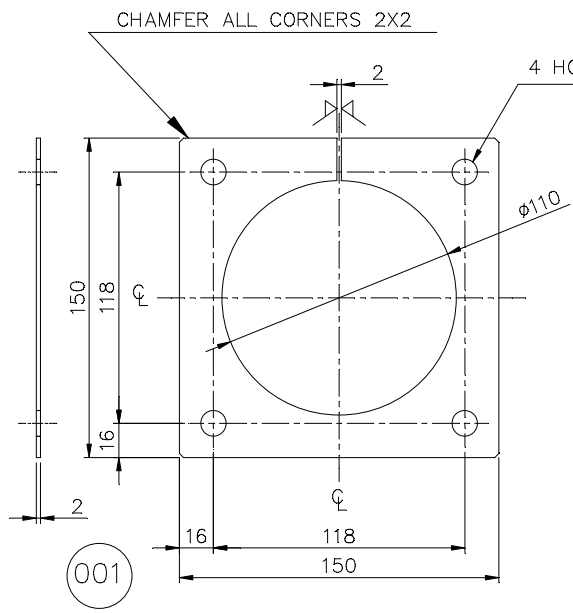
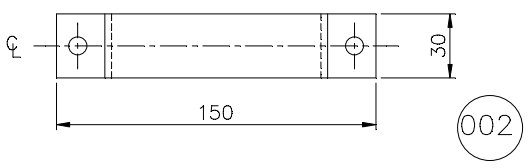
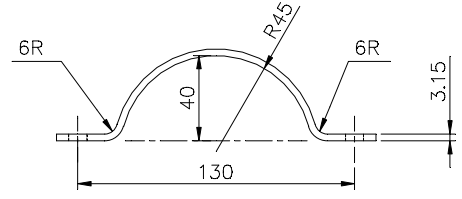
SIGN. & DATE

INVENTORY NO.

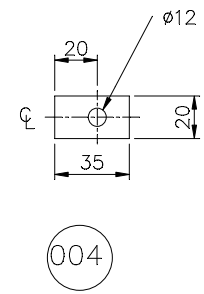
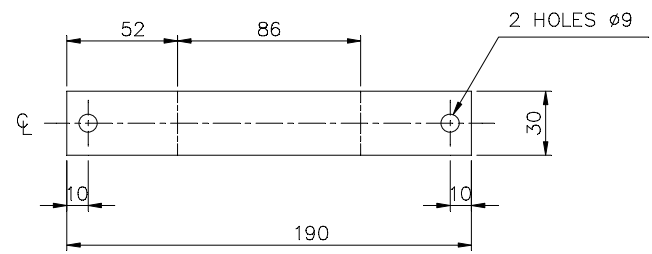
DRG No 3 521 66 01735



VAR-00

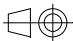


DOVELOPMENT OF ITEM 002



REV	DATE	ALT.	SKG	REV	DATE	ALT.	SHASHI
07	30.04.16	CKD.	AKHIL	05	31.01.09	CKD.	P.PARE
		APPD.	MAK			APPD.	MAK
-VAR.01 & ITEM-005,006 ADDED.				VAR.01 & ITEM-005 DELETED.			
(DCA-33869)				2-HOLES 09 MARKED FOR IT-002.			
				WEIGHT UPDATED.			
				(DCA-28495)			
REV	DATE	ALT.		REV	DATE	ALT.	
04	05.02.04	CKD.		03	6.11.03	CKD.	
		APPD.				APPD.	
TITLE RECTIFIED				DRAWING REDRAWN			
				REFER SHT. 01			

ADDITIONAL INFORMATION							
STATUS OF DRAWING							
DISTRIBUTION OF PRINTS							
OFFICE COPY - 1							
SWGR SHOPS - 4							
TCX - 1							
REV	DATE	ALT.	P.PARE	REV	DATE	ALT.	P.PARE
06	11.04.11	CKD.	AKHIL	06	11.04.11	CKD.	AKHIL
		APPD.	MAK			APPD.	MAK
HOLE 110 ADDED							
(DCA. NO. 30272)							

TYPE OF PRODUCT OR NAME OF CUST/PROJ										
VM-12 (OPTIMISED)										
<div><div><div>बी.एच.ई.एल.</div><div><div></div><div></div><div></div></div></div><div>BHARAT HEAVY ELECTRICALS LIMITED BHOPAL</div></div>					NAME	SIGN	DATE	NO. OF VAR		
				DRN	H. SONI	Sd/-	23.11.92	01		
				CKD	BKR	Sd/-	27.11.92			
				APPD	RB	Sd/-	7.12.92			
DEPT SWE	UN. TOL.DIM.GR.		SCALE 1: 2.5	WEIGHT (KG.) —	REF TO ASSY 2 521 66 01539		ITEM MO. 001,003 004,005	NO.OF ITEMS 006		
CODE 409										
TITLE <u>PLATE AND CLAMP</u>					DRG NO 3 521 66 01735			REV. 07		
					SHT.NO.		01	NO. OF SHT.		03

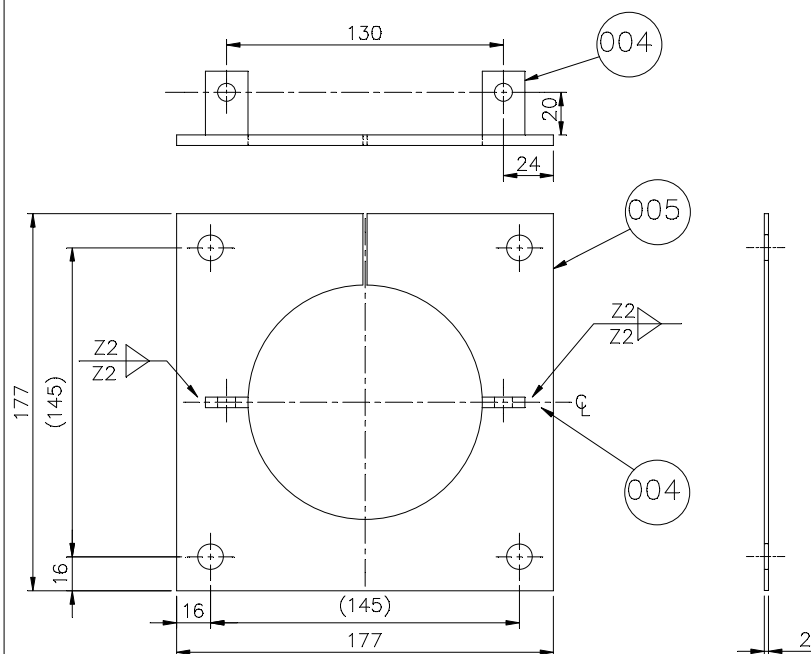
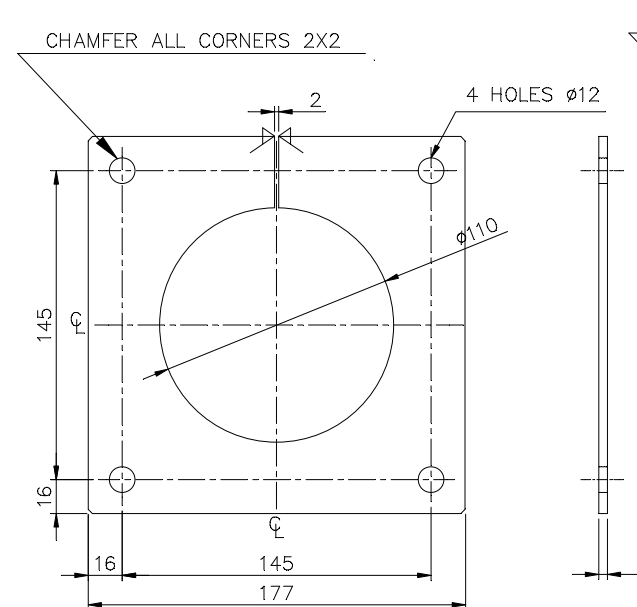
THE INFORMATION ON THIS DOCUMENT IS THE PROPERTY OF BHARAT HEAVY ELECTRICALS LIMITED. IT MUST NOT BE USED DIRECTLY OR INDIRECTLY IN ANY WAY DETRIMENTAL TO THE INTEREST OF THE COMPANY.

35216601735-R04-S02
REF.DRG.NO.

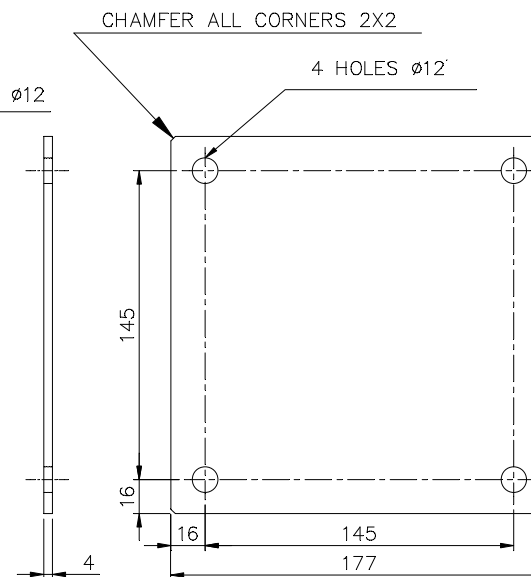
SIGN. & DATE

INVENTORY NO.

DRG NO 3 521 66 01735

VAR-01

005



(006)

REV	DATE	ALT.	SKG	REV	DATE	ALT.	SHASHI
07	30.04.16	CKD.	AKHIL	05	31.01.09	CKD.	P.PARE
		APPD.	MAK			APPD.	MAK

REV	DATE	ALT.	SHASHI
05	31.01.09	CKD.	P.PARE
		APPD.	MAK

-VAR.01 & ITEM-005,006 ADDED.

VAR.01 & ITEM-005 DELETED.
2-HOLES Ø9 MARKED FOR IT-002.
WEIGHT UPDATED.

(DCA-33869)

(DCA-28495)

REV	DATE	ALT.	REV	DATE	ALT.
04	05.02.04	CKD.	03	6.11.03	CKD.
		APPD.			APPD.

REV	DATE	ALT.
03	6.11.03	CKD.
		APPD.

TITLE RECTIFIED

DRAWING REDRAWN
REFER SHT. 01

ADDITIONAL INFORMATION

STATUS OF DRAWING

DISTRIBUTION OF PRINTS	
1	1
2	2
3	3
4	4
5	5
6	6
7	7
8	8
9	9
10	10
11	11
12	12
13	13
14	14
15	15
16	16
17	17
18	18
19	19
20	20
21	21
22	22
23	23
24	24
25	25
26	26
27	27
28	28
29	29
30	30
31	31
32	32
33	33
34	34
35	35
36	36
37	37
38	38
39	39
40	40
41	41
42	42
43	43
44	44
45	45
46	46
47	47
48	48
49	49
50	50
51	51
52	52
53	53
54	54
55	55
56	56
57	57
58	58
59	59
60	60
61	61
62	62
63	63
64	64
65	65
66	66
67	67
68	68
69	69
70	70
71	71
72	72
73	73
74	74
75	75
76	76
77	77
78	78
79	79
80	80
81	81
82	82
83	83
84	84
85	85
86	86
87	87
88	88
89	89
90	90
91	91
92	92
93	93
94	94
95	95
96	96
97	97
98	98
99	99
100	100

OFFICE COPY - 1
SWGR SHOPS - 4
TCX - 1


TYPE OF PRODUCT OR
NAME OF CUST/PROJ

VM-12 (OPTIMISED)



BHARAT HEAVY ELECTRICALS LIMITED
BHOPAL

	NAME	SIGN	DATE	NO. OF VAR
DRN	H. SONI	Sd/—	23.11.92	01
CKD	BKR	Sd/—	27.11.92	
APPD	RB	Sd/—	7.12.92	

DEPT SWE	UN. TOL.DIM.GR.		SCALE	WEIGHT (KG.)	REF TO ASSY	ITEM M.O.	N.O. ITEM
CODE 409			1:2.5	—	2 521 66 01539	001,003 004,005	00

TITLE

PLATE AND CLAMP

DRG NO		REV	
3 521 66 01735		07	
SHT.NO.	02	NO. OF SHT.	0

THE INFORMATION ON THIS DOCUMENT IS THE PROPERTY OF BHARAT HEAVY ELECTRICALS LIMITED
IT MUST NOT BE USED DIRECTLY OR INDIRECTLY IN ANY WAY DETRIMENTAL TO THE INTEREST OF THE COMPANY

35216601735-R05-S01
REF. DRG. NO.
SIGN. & DATE
INVENTORY NO.

DRG. NO. 3 521 66 01735

UNSPECIFIED TOLERANCES SHALL BE :-
FOR MACHINING MEDIUM AA0230208.
FOR SHEARING OF PLATES/SHEETS AS PER AA0230409.
FOR WELDING CLASS A OF AA0621104.
FOR WELDING CLASS E OF AA0621105.
WELDING GRADE AS PER CLASS IV OF AA0622101.

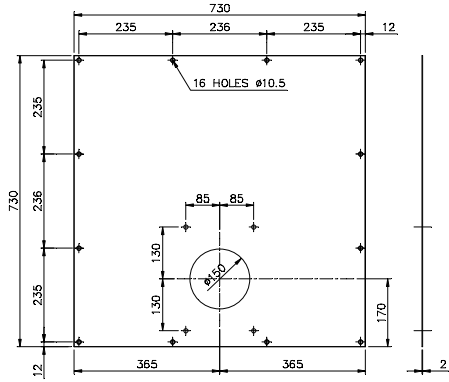
FINISH:- ZINC PLATE AND PASSIVATED TO AA0673603 & AA 0673604
(0.013 TK. MIN) FOR VAR. 00

-	-			006	CABLE GLAND PLATE 4TK.X177X177 AL SHEET				AA1231714069						
									AA12314						
001	-			005	2TK.X177X177 LG. H.R.C.S. SHEET				AA1011713110						
									AA10113						
002	002			004	20X5TK.X35 LG. BRT. STEEL FLAT				AA1010312103		KG.	0.027			
									AA10112			001			
-	-			003	4TK.X150X150 LG. AL. SHEET				-		KG.	0.240			
									AA12312			001			
-	-			002	3.15TK.X30X190 LG. AL. SHEET				BP1231795026		KG.	0.048			
									BP12395			001			
-	001			001	2TK.X150X150 LG. H.R.C.S. SHEET				AA1011713110		KG.	0.353			
									AA10113			001			
VAR01	VAR00		REMARKS	VAR. NO.	ITEM NO.	DESCRIPTION	STD	DRAWING NO.	IT.NO.	MATL. CODE	UNIT	UNIT WT.	QTY.	ZONE	

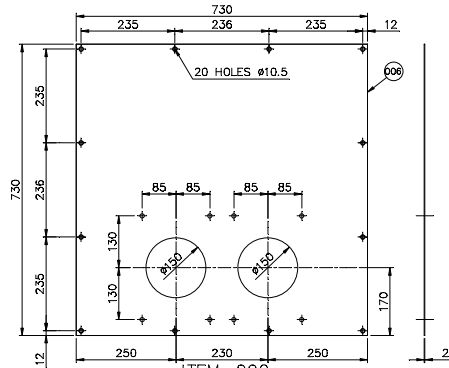
REV 07		DATE 30.04.16	ALT. CKD.	SKG AKHIL	REV 05	DATE 31.01.09	ALT. CKD.	SHASHI P.PARE
			APPD.	MAK				MAK
		-VAR.01 & ITEM-005,006 ADDED.			VAR.01 & ITEM-005 DELETED. 2-HOLES ø9 MARKED FOR IT-002. WEIGHT UPDATED.			
		(DCA-33869)			(DCA-28495)			
REV 04		DATE 05.02.04	ALT. CKD.		REV. 03	DATE 6.11.03	ALTERED	
			APPD.				CHECKED	
		TITLE RECTIFIED					APPROVED	
		DRAWING REDRAWN SHT.-02 ADDED			REV. 06		DATE 11.04.11	ALTERED P.PARE
							CHECKED	AKHIL
							APPROVED	MAK
		HOLE ø110 ADDED					fahAkx DEPT SWE	
		(DCA. NO. 30272)					vu... Vky... uki dh Js.kh UNTOLD.DIMS. GR.	
							dksm CODE 409	
							'kh"AZA	
							PLATE AND CLAMP	
							HAKjr gsoh bysfDV&dYl fyfeVsM	
							HAKsiky BHARAT HEAVY ELECTRICALS LTD. BHOPAL	
							HAKjr fd_xk- WEIGHT (K.G.)	
							vis... M&kbZax dk lanHAZ REF. TO ASSY. DRG.	
							en d-... ITEM NO.	
							en... la;k NO. OF ITEM	
							vksjs[A d- DRAWING NO.	
							3 521 66 01735	
							i="B d-... No. 03	
							i="Bksa dh la;... OF SHT. 03	

THE INFORMATION ON THIS DOCUMENT IS THE PROPERTY OF BHARAT HEAVY ELECTRICALS LIMITED. IT MUST NOT BE USED DIRECTLY OR INDIRECTLY IN ANY WAY DETRIMENTAL TO THE INTEREST OF THE COMPANY.

35216602586 DRG NO



ITEM-001
(3-1C)

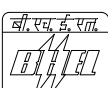
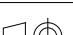


ITEM-002
(6-1C)

UNSPECIFIED TOLERANCE SHALL BE :-
FOR MACHINING MEDIUM AA0230208
FOR SHEARING OF PLATES/SHEETS AS PER AA0230409

		018	2 TK. x 730 x 730 LG. HRCS SHEET				AA 1011713110		KG.	8.366	
							AA 10113			001	
		017	2 TK. x 730 x 730 LG. HRCS SHEET				AA 1011713110		KG.	8.366	
							AA 10113			001	
		016	2 TK. x 730 x 730 LG. HRCS SHEET				AA 1011713110		KG.	8.366	
							AA 10113			001	
		015	2 TK. x 730 x 730 LG. HRCS SHEET				AA 1011713110		KG.	8.366	
							AA 10113			001	
		014	4 TK. x 230 x 310 LG. AL. ALLOY SHEET				AA 1231714069		KG.	0.770	
							AA 12314			001	
		013	2 TK. x 730 x 730 LG. HRCS SHEET				AA 1011713110		KG.	8.366	
							AA 10113			001	
		012	2 TK. x 440 x 736 LG. HRCS SHEET				AA 1011713110		KG.	5.084	
							AA 10113			001	
		011	2 TK. x 440 x 736 LG. HRCS SHEET				AA 1011713110		KG.	5.084	
							AA 10113			001	
		010	2 TK. x 730x 730 LG. HRCS SHEET				AA 1011713110		KG.	8.366	
							AA 10113			001	
		009	2 TK. x 730x 730 LG. HRCS SHEET				AA 1011713110		KG.	8.366	
							AA 10113			001	
		008	2 TK. x 440 x 736 LG. HRCS SHEET				AA 1011713110		KG.	5.084	
							AA 10113			001	
		007	2 TK. x 440 x 736 LG. HRCS SHEET				AA 1011713110		KG.	5.084	
							AA 10113			001	
		006	2 TK. x 730 x 730 LG. HRCS SHEET				AA 1011713110		KG.	8.366	
							AA 10113			001	
BP9309132035		005	4 TK. x 150 x 240 LG. AL. ALLOY SHEET				AA 1231714069		KG.	0.388	
							AA 12314			001	
BP9309132043		004	4 TK. x 200 x 290 LG. AL. ALLOY SHEET				AA 1231714069		KG.	0.626	
							AA 12314			001	
		003	2 TK. x 730 x 730 LG. HRCS SHEET				AA 1011713110		KG.	8.366	
							AA 10113			001	
		002	2 TK. x 730 x 730 LG. HRCS SHEET				AA 1011713110		KG.	8.366	
							AA 10113			001	
		001	2 TK. x 730 x 730 LG. HRCS SHEET				AA 1011713110		KG.	8.366	
							AA 10113			001	
REMARKS	VAR NO.	ITEM NO.	DESCRIPTION	STD	DRAWING NO.	IT.NO.	MATERIAL CODE	A	UNIT	UNIT WT.	
						VAR	MATL. SPCN.	C	UNIT	QTY	

SIGN. & DATE
INVENTORY NO.

REV 06	DATE 12.05.20	DRN CKD APPD	SKG AKHIL AD	REV 07	DATE 13.11.21	DRN CKD APPD	SKG AKHIL AD	ADDITIONAL INFORMATION																						
ITEM 019 ADD. (DCA - 36539)								ITEM 020 ADDED. (DCA - 37351)								STATUS OF DRAWING B														
																DISTRIBUTION OF PRINTS OFFICE COPY - 1 SWGR SHOPS - 3 TCX - 1														
																TYPE OF PRODUCT OR NAME OF CUST/PROJ VM-12(BT)														
																				BHARAT HEAVY ELECTRICALS LIMITED BHOPAL		DRN	NAME	SIGN	DATE	NO. OF VAR				
																CKD	AKHIL	sd/-	03.03.14	—										
																APPD	MAK	sd/-	03.03.14	—										
REV 05	DATE 22.09.18	DRN CKD APPD	SKG AKHIL AD	REV 08	DATE 14.12.21	DRN CKD APPD	SKG AKHIL AD	REV 09	DATE 14/02/23	DRN CKD APPD	SKG AKHIL AD	DEPT SWE CODE 409	UN. TOL.DIM.GR. M AA 0230208		SCALE 1: 7.5	WEIGHT (KG.) —	REF TO ASSY —		ITEM MD. —	NO.OF ITEMS 022										
ITEM 018 ADD. (DCA - 35650)								ITEM-021 ADDED FOR 12-1C SHEET 05 ADDED. (DCA 37386)								ITEM 022 ADDED. (DCA - 37988)								TITLE BOTTOM COVER FOR CT/BB AND EXTN. CHAMBER 820/524 DEEP FOR ROUND CBCT 3-1C/6-1C/3-3C				DRG NO 35216602586		REV. 09
																								SHT.NO.		01	NO.OF SHT.		05	

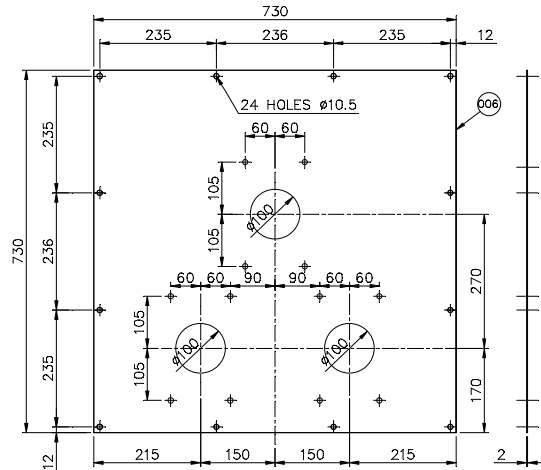
THE INFORMATION ON THIS DOCUMENT IS THE PROPERTY OF BHARAT HEAVY ELECTRICALS LIMITED. IT MUST NOT BE USED DIRECTLY OR INDIRECTLY IN ANY WAY DETRIMENTAL TO THE INTEREST OF THE COMPANY.

REF.DRG.NO.

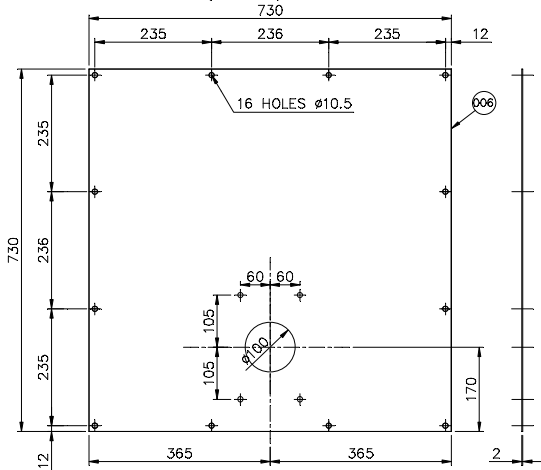
SIGN.& DATE

INVENTORY NO.

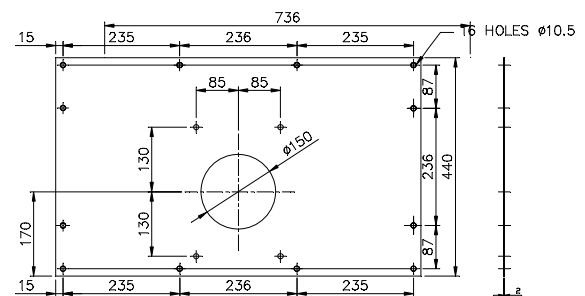
35216602586 DRG NO



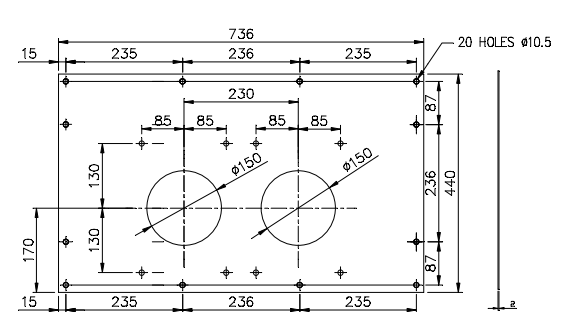
ITEM-003
(3-3C)



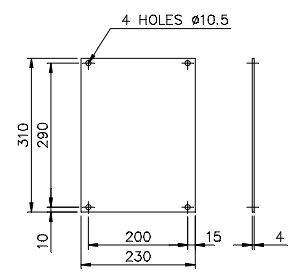
ITEM-006
(2-3C)



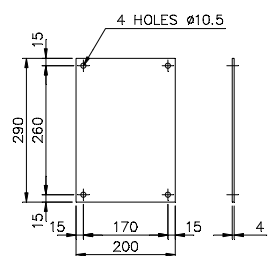
ITEM-007
(3-1C)



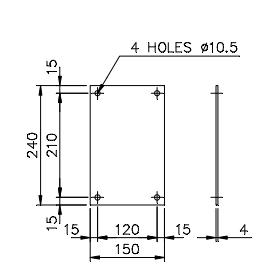
ITEM-008
(6-1C)



ITEM-014



ITEM-004



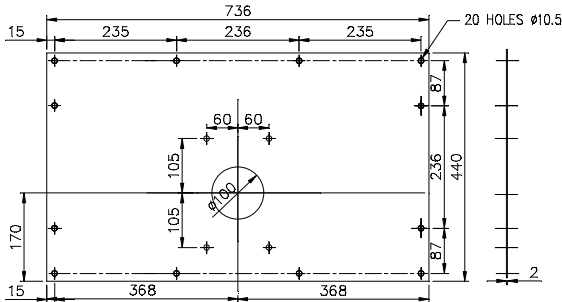
ITEM-005 & 020

		022	2 TK. x 440 x 730 LG. HRCS SHEET			AA 1011713110	KG.	5.084	
						AA 10113	KG.	001	
		021	2 TK. x 730 x 730 LG. HRCS SHEET			AA 1011713110	KG.	8.366	
						AA 10113	KG.	001	
		020	4 TK. x 150 x 240 LG. CRCA SHEET			AA 1011713160	KG.	1.13	
						AA 10113	KG.	001	
		019	2 TK. x 440 x 730 LG. HRCS SHEET			AA 1011713110	KG.	5.084	
						AA 10113	KG.	001	
REMARKS	VAR NO.	ITEM NO.	DESCRIPTION	STD	DRAWING NO.	IT.NO.	MATERIAL CODE	A	UNIT WT.
						VAR	MATL. SPCN.	C	QTY

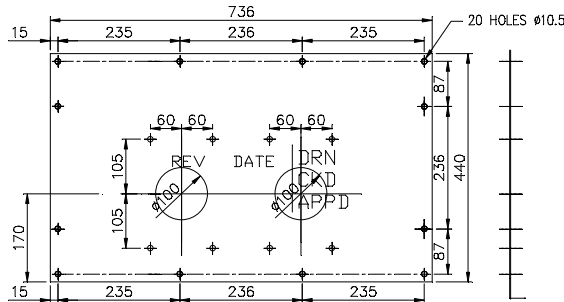
ADDITIONAL INFORMATION				TYPE OF PRODUCT OR NAME OF CUST/PROJ				VM-12(BT)			
STATUS OF DRAWING B				DISTRIBUTION OF PRINTS				OFFICE COPY - 1 SWGR SHOPS - 3 TCX - 1			
REV 05				REV 06				REV 07			
DATE 22.09.18				DATE 12.05.20				DATE 13.11.21			
DRN CKD APPD				DRN CKD APPD				DRN CKD APPD			
SKG AKHIL AD				SKG AKHIL AD				SKG AKHIL AD			
ITEM 018 ADD.				ITEM 019 ADD.				ITEM 020 ADDED			
(DCA - 35650)				(DCA - 36539)				(DCA - 37351)			
REV 07				REV 08				REV 09			
DATE 13.11.21				DATE 14.12.21				DATE 14/02/23			
DRN CKD APPD				DRN CKD APPD				DRN CKD APPD			
SKG AKHIL AD				SKG AKHIL AD				SKG AKHIL AD			
ITEM 020 ADDED				ITEM-021 ADDED FOR 12-1C. SHEET 05 ADDED.				ITEM 022 ADDED.			
(DCA - 37351)				(DCA 37386)				(DCA - 37988)			
DEPT SWE				UN. TOL.DIMGR.				SCALE			
CODE 409				M				1:7.5			
AA 0230208				TITLE				BOTTOM COVER FOR CT/BB AND EXTN. CHAMBER 820/524 DEEP FOR ROUND CBCT 3-1C/6-1C/3-3C			
DRG NO				SHT.NO.				NO.OF SHT.			
35216602586				02				05			
REV.				NO.OF				ITEMS			
09				022				001			

THE INFORMATION ON THIS DOCUMENT IS THE PROPERTY OF BHARAT HEAVY ELECTRICALS LIMITED. IT MUST NOT BE USED DIRECTLY OR INDIRECTLY IN ANY WAY DETRIMENTAL TO THE INTEREST OF THE COMPANY.

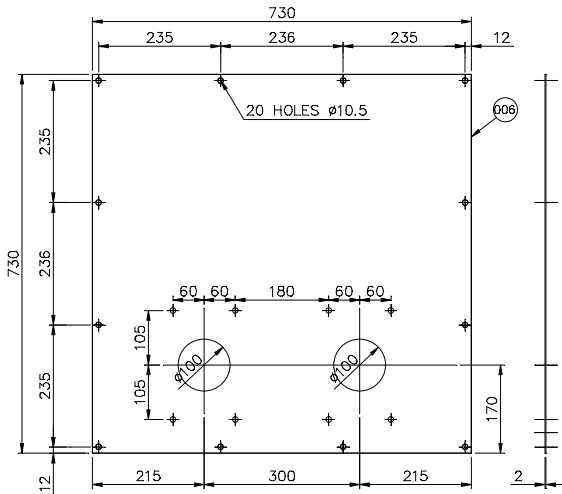
985Z0991299 DRG NO 35216602586



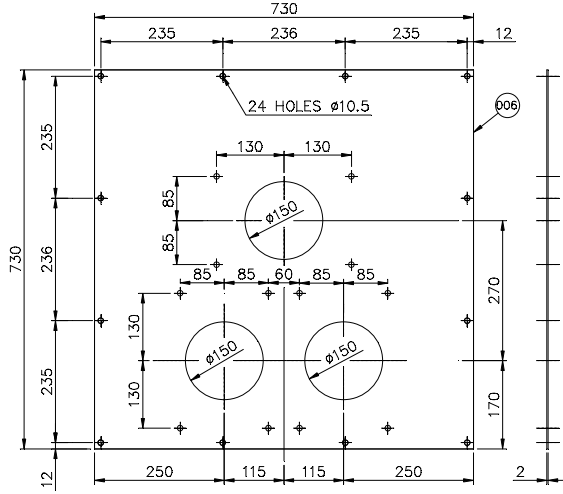
ITEM-011
(1-3C)



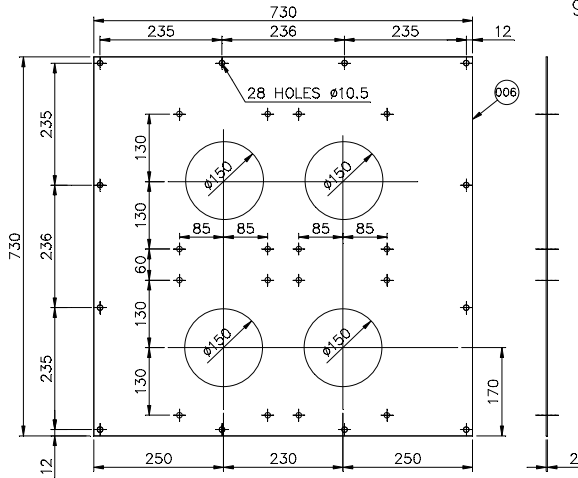
ITEM-012
(2-3C)



ITEM-009
(2-3C)



ITEM-010
9-1C

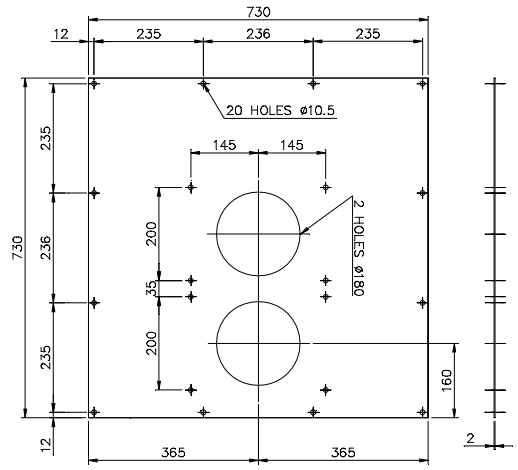


ITEM-013
(12-1C)

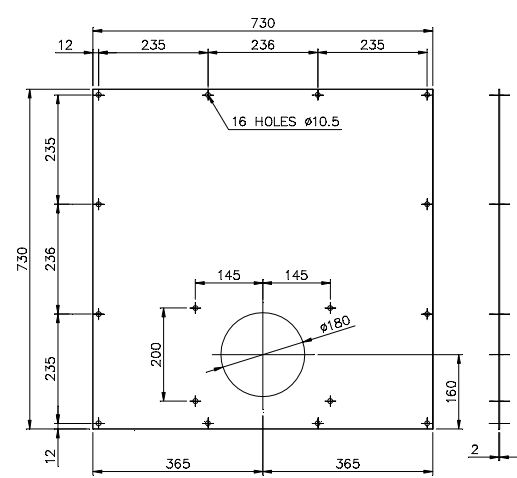
REF. DRG. NO.	REV 09	DATE 14/02/23	DRN CKD	SKG AKHIL																		
	ITEM 022 ADDED.																					
SIGN. & DATE	REV 06	DATE 12.05.20	DRN CKD	SKG AKHIL	REV 07	DATE 13.11.21	DRN CKD	SKG AKHIL	ADDITIONAL INFORMATION													
	ITEM 019 ADD.				ITEM 020 ADDED.				STATUS OF DRAWING B													
INVENTORY NO.	REV 05	DATE 22.09.18	DRN CKD	SKG AKHIL	REV 04	DATE 25.07.17	DRN CKD	AKN AKHIL	REV 08	DATE 14.12.21	DRN CKD	SKG AKHIL	DISTRIBUTION OF PRINTS									
	ITEM 018 ADD.				ITEM-014 TO 017 ADDED. SHEET 04 ADDED.				ITEM-013 ADDED FOR 12-1C. SHEET 05 ADDED.													
				(DCA - 37988)																		
				(DCA - 36539)																		
				(DCA - 37351)																		

THE INFORMATION ON THIS DOCUMENT IS THE PROPERTY OF BHARAT HEAVY ELECTRICALS LIMITED. IT MUST NOT BE USED DIRECTLY OR INDIRECTLY IN ANY WAY DETRIMENTAL TO THE INTEREST OF THE COMPANY.

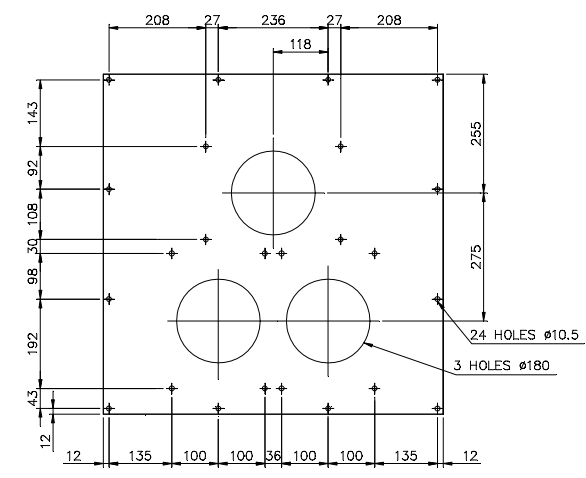
DRG NO 35216602586



ITEM-015
6-1C (180ø CBCT)



ITEM-016
3-1C (180ø CBCT)

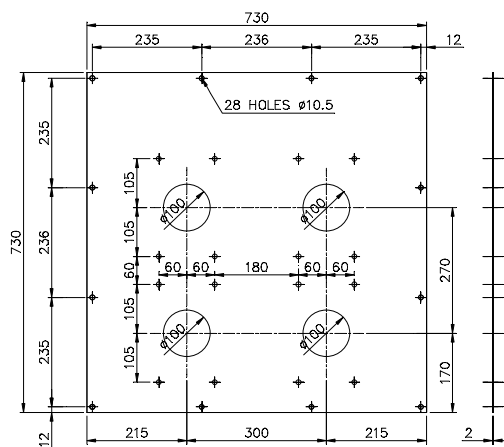


ITEM-017
9-1C (FOR 180ø CBCT)

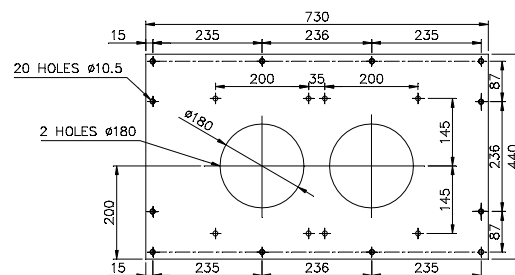
REF.DRG.NO.	REV	DATE	DRN	SKG	REV	DATE	DRN	SKG	REV	DATE	DRN	SKG	REV	DATE	DRN	SKG	REV	DATE	DRN	SKG	REV	DATE	DRN	SKG	REV	DATE	DRN	SKG	REV	DATE	DRN	SKG	REV	DATE	DRN	SKG	REV	DATE	DRN	SKG	REV	DATE	DRN	SKG	REV	DATE	DRN	SKG	REV	DATE	DRN	SKG	REV	DATE	DRN	SKG	REV	DATE	DRN	SKG	REV	DATE	DRN	SKG	REV	DATE	DRN	SKG	REV	DATE	DRN	SKG	REV	DATE	DRN	SKG	REV	DATE	DRN	SKG	REV	DATE	DRN	SKG	REV	DATE	DRN	SKG	REV	DATE	DRN	SKG	REV	DATE	DRN	SKG	REV	DATE	DRN	SKG	REV	DATE	DRN	SKG	REV	DATE	DRN	SKG	REV	DATE	DRN	SKG	REV	DATE	DRN	SKG	REV	DATE	DRN	SKG	REV	DATE	DRN	SKG	REV	DATE	DRN	SKG	REV	DATE	DRN	SKG	REV	DATE	DRN	SKG	REV	DATE	DRN	SKG	REV	DATE	DRN	SKG	REV	DATE	DRN	SKG	REV	DATE	DRN	SKG	REV	DATE	DRN	SKG	REV	DATE	DRN	SKG	REV	DATE	DRN	SKG	REV	DATE	DRN	SKG	REV	DATE	DRN	SKG	REV	DATE	DRN	SKG	REV	DATE	DRN	SKG	REV	DATE	DRN	SKG	REV	DATE	DRN	SKG	REV	DATE	DRN	SKG	REV	DATE	DRN	SKG	REV	DATE	DRN	SKG	REV	DATE	DRN	SKG	REV	DATE	DRN	SKG	REV	DATE	DRN	SKG	REV	DATE	DRN	SKG	REV	DATE	DRN	SKG	REV	DATE	DRN	SKG	REV	DATE	DRN	SKG	REV	DATE	DRN	SKG	REV	DATE	DRN	SKG	REV	DATE	DRN	SKG	REV	DATE	DRN	SKG	REV	DATE	DRN	SKG	REV	DATE	DRN	SKG	REV	DATE	DRN	SKG	REV	DATE	DRN	SKG	REV	DATE	DRN	SKG	REV	DATE	DRN	SKG	REV	DATE	DRN	SKG	REV	DATE	DRN	SKG	REV	DATE	DRN	SKG	REV	DATE	DRN	SKG	REV	DATE	DRN	SKG	REV	DATE	DRN	SKG	REV	DATE	DRN	SKG	REV	DATE	DRN	SKG	REV	DATE	DRN	SKG	REV	DATE	DRN	SKG	REV	DATE	DRN	SKG	REV	DATE	DRN	SKG	REV	DATE	DRN	SKG	REV	DATE	DRN	SKG	REV	DATE	DRN	SKG	REV	DATE	DRN	SKG	REV	DATE	DRN	SKG	REV	DATE	DRN	SKG	REV	DATE	DRN	SKG	REV	DATE	DRN	SKG	REV	DATE	DRN	SKG	REV	DATE	DRN	SKG	REV	DATE	DRN	SKG	REV	DATE	DRN	SKG	REV	DATE	DRN	SKG	REV	DATE	DRN	SKG	REV	DATE	DRN	SKG	REV	DATE	DRN	SKG	REV	DATE	DRN	SKG	REV	DATE	DRN	SKG	REV	DATE	DRN	SKG	REV	DATE	DRN	SKG	REV	DATE	DRN	SKG	REV	DATE	DRN	SKG	REV	DATE	DRN	SKG	REV	DATE	DRN	SKG	REV	DATE	DRN	SKG	REV	DATE	DRN	SKG	REV	DATE	DRN	SKG	REV	DATE	DRN	SKG	REV	DATE	DRN	SKG	REV	DATE	DRN	SKG	REV	DATE	DRN	SKG	REV	DATE	DRN	SKG	REV	DATE	DRN	SKG	REV	DATE	DRN	SKG	REV	DATE	DRN	SKG	REV	DATE	DRN	SKG	REV	DATE	DRN	SKG	REV	DATE	DRN	SKG	REV	DATE	DRN	SKG	REV	DATE	DRN	SKG	REV	DATE	DRN	SKG	REV	DATE	DRN	SKG	REV	DATE	DRN	SKG	REV	DATE	DRN	SKG	REV	DATE	DRN	SKG	REV	DATE	DRN	SKG	REV	DATE	DRN	SKG	REV	DATE	DRN	SKG	REV	DATE	DRN	SKG	REV	DATE	DRN	SKG	REV	DATE	DRN	SKG	REV	DATE	DRN	SKG	REV	DATE	DRN	SKG	REV	DATE	DRN	SKG	REV	DATE	DRN	SKG	REV	DATE	DRN	SKG	REV	DATE	DRN	SKG	REV	DATE	DRN	SKG	REV	DATE	DRN	SKG	REV	DATE	DRN	SKG	REV	DATE	DRN	SKG	REV	DATE	DRN	SKG	REV	DATE	DRN	SKG	REV	DATE	DRN	SKG	REV	DATE	DRN	SKG	REV	DATE	DRN	SKG	REV	DATE	DRN	SKG	REV	DATE	DRN	SKG	REV	DATE	DRN	SKG	REV	DATE	DRN	SKG	REV	DATE	DRN	SKG	REV	DATE	DRN	SKG	REV	DATE	DRN	SKG	REV	DATE	DRN	SKG	REV	DATE	DRN	SKG	REV	DATE	DRN	SKG	REV	DATE	DRN	SKG	REV	DATE	DRN	SKG	REV	DATE	DRN	SKG	REV	DATE	DRN	SKG	REV	DATE	DRN	SKG	REV	DATE	DRN	SKG	REV	DATE	DRN	SKG	REV	DATE	DRN	SKG	REV	DATE	DRN	SKG	REV	DATE	DRN	SKG	REV	DATE	DRN	SKG	REV	DATE	DRN	SKG	REV	DATE	DRN	SKG	REV	DATE	DRN	SKG	REV	DATE	DRN	SKG	REV	DATE	DRN	SKG	REV	DATE	DRN	SKG	REV	DATE	DRN	SKG	REV	DATE	DRN	SKG	REV	DATE	DRN	SKG	REV	DATE	DRN	SKG	REV	DATE	DRN	SKG	REV	DATE	DRN	SKG	REV	DATE	DRN	SKG	REV	DATE	DRN	SKG	REV	DATE	DRN	SKG	REV	DATE	DRN	SKG	REV	DATE	DRN	SKG	REV	DATE	DRN	SKG	REV	DATE	DRN	SKG	REV	DATE	DRN	SKG	REV	DATE	DRN	SKG	REV	DATE	DRN	SKG	REV	DATE	DRN	SKG	REV	DATE	DRN	SKG	REV	DATE	DRN	SKG	REV	DATE	DRN	SKG	REV	DATE	DRN	SKG	REV	DATE	DRN	SKG	REV	DATE	DRN	SKG	REV	DATE	DRN	SKG	REV	DATE	DRN	SKG	REV	DATE	DRN	SKG	REV	DATE	DRN	SKG	REV	DATE	DRN	SKG	REV	DATE	DRN	SKG	REV	DATE	DRN	SKG	REV	DATE	DRN	SKG	REV	DATE	DRN	SKG	REV	DATE	DRN	SKG	REV	DATE	DRN	SKG	REV	DATE	DRN	SKG	REV	DATE	DRN	SKG	REV	DATE	DRN	SKG	REV	DATE	DRN	SKG	REV	DATE	DRN	SKG	REV	DATE	DRN	SKG	REV	DATE	DRN	SKG	REV	DATE	DRN	SKG	REV	DATE	DRN	SKG	REV	DATE	DRN	SKG	REV	DATE	DRN	SKG	REV	DATE	DRN	SKG	REV	DATE	DRN	SKG	REV	DATE	DRN	SKG	REV	DATE	DRN	SKG	REV	DATE	DRN	SKG	REV	DATE	DRN	SKG	REV	DATE	DRN	SKG	REV	DATE	DRN	SKG	REV	DATE	DRN	SKG	REV	DATE	DRN
-------------	-----	------	-----	-----	-----	------	-----	-----	-----	------	-----	-----	-----	------	-----	-----	-----	------	-----	-----	-----	------	-----	-----	-----	------	-----	-----	-----	------	-----	-----	-----	------	-----	-----	-----	------	-----	-----	-----	------	-----	-----	-----	------	-----	-----	-----	------	-----	-----	-----	------	-----	-----	-----	------	-----	-----	-----	------	-----	-----	-----	------	-----	-----	-----	------	-----	-----	-----	------	-----	-----	-----	------	-----	-----	-----	------	-----	-----	-----	------	-----	-----	-----	------	-----	-----	-----	------	-----	-----	-----	------	-----	-----	-----	------	-----	-----	-----	------	-----	-----	-----	------	-----	-----	-----	------	-----	-----	-----	------	-----	-----	-----	------	-----	-----	-----	------	-----	-----	-----	------	-----	-----	-----	------	-----	-----	-----	------	-----	-----	-----	------	-----	-----	-----	------	-----	-----	-----	------	-----	-----	-----	------	-----	-----	-----	------	-----	-----	-----	------	-----	-----	-----	------	-----	-----	-----	------	-----	-----	-----	------	-----	-----	-----	------	-----	-----	-----	------	-----	-----	-----	------	-----	-----	-----	------	-----	-----	-----	------	-----	-----	-----	------	-----	-----	-----	------	-----	-----	-----	------	-----	-----	-----	------	-----	-----	-----	------	-----	-----	-----	------	-----	-----	-----	------	-----	-----	-----	------	-----	-----	-----	------	-----	-----	-----	------	-----	-----	-----	------	-----	-----	-----	------	-----	-----	-----	------	-----	-----	-----	------	-----	-----	-----	------	-----	-----	-----	------	-----	-----	-----	------	-----	-----	-----	------	-----	-----	-----	------	-----	-----	-----	------	-----	-----	-----	------	-----	-----	-----	------	-----	-----	-----	------	-----	-----	-----	------	-----	-----	-----	------	-----	-----	-----	------	-----	-----	-----	------	-----	-----	-----	------	-----	-----	-----	------	-----	-----	-----	------	-----	-----	-----	------	-----	-----	-----	------	-----	-----	-----	------	-----	-----	-----	------	-----	-----	-----	------	-----	-----	-----	------	-----	-----	-----	------	-----	-----	-----	------	-----	-----	-----	------	-----	-----	-----	------	-----	-----	-----	------	-----	-----	-----	------	-----	-----	-----	------	-----	-----	-----	------	-----	-----	-----	------	-----	-----	-----	------	-----	-----	-----	------	-----	-----	-----	------	-----	-----	-----	------	-----	-----	-----	------	-----	-----	-----	------	-----	-----	-----	------	-----	-----	-----	------	-----	-----	-----	------	-----	-----	-----	------	-----	-----	-----	------	-----	-----	-----	------	-----	-----	-----	------	-----	-----	-----	------	-----	-----	-----	------	-----	-----	-----	------	-----	-----	-----	------	-----	-----	-----	------	-----	-----	-----	------	-----	-----	-----	------	-----	-----	-----	------	-----	-----	-----	------	-----	-----	-----	------	-----	-----	-----	------	-----	-----	-----	------	-----	-----	-----	------	-----	-----	-----	------	-----	-----	-----	------	-----	-----	-----	------	-----	-----	-----	------	-----	-----	-----	------	-----	-----	-----	------	-----	-----	-----	------	-----	-----	-----	------	-----	-----	-----	------	-----	-----	-----	------	-----	-----	-----	------	-----	-----	-----	------	-----	-----	-----	------	-----	-----	-----	------	-----	-----	-----	------	-----	-----	-----	------	-----	-----	-----	------	-----	-----	-----	------	-----	-----	-----	------	-----	-----	-----	------	-----	-----	-----	------	-----	-----	-----	------	-----	-----	-----	------	-----	-----	-----	------	-----	-----	-----	------	-----	-----	-----	------	-----	-----	-----	------	-----	-----	-----	------	-----	-----	-----	------	-----	-----	-----	------	-----	-----	-----	------	-----	-----	-----	------	-----	-----	-----	------	-----	-----	-----	------	-----	-----	-----	------	-----	-----	-----	------	-----	-----	-----	------	-----	-----	-----	------	-----	-----	-----	------	-----	-----	-----	------	-----	-----	-----	------	-----	-----	-----	------	-----	-----	-----	------	-----	-----	-----	------	-----	-----	-----	------	-----	-----	-----	------	-----	-----	-----	------	-----	-----	-----	------	-----	-----	-----	------	-----	-----	-----	------	-----	-----	-----	------	-----	-----	-----	------	-----	-----	-----	------	-----	-----	-----	------	-----	-----	-----	------	-----	-----	-----	------	-----	-----	-----	------	-----	-----	-----	------	-----	-----	-----	------	-----	-----	-----	------	-----	-----	-----	------	-----	-----	-----	------	-----	-----	-----	------	-----	-----	-----	------	-----	-----	-----	------	-----	-----	-----	------	-----	-----	-----	------	-----	-----	-----	------	-----	-----	-----	------	-----	-----	-----	------	-----	-----	-----	------	-----	-----	-----	------	-----	-----	-----	------	-----	-----	-----	------	-----	-----	-----	------	-----	-----	-----	------	-----	-----	-----	------	-----	-----	-----	------	-----	-----	-----	------	-----	-----	-----	------	-----	-----	-----	------	-----	-----	-----	------	-----	-----	-----	------	-----	-----	-----	------	-----	-----	-----	------	-----	-----	-----	------	-----	-----	-----	------	-----	-----	-----	------	-----	-----	-----	------	-----	-----	-----	------	-----	-----	-----	------	-----	-----	-----	------	-----	-----	-----	------	-----	-----	-----	------	-----	-----	-----	------	-----	-----	-----	------	-----	-----	-----	------	-----	-----	-----	------	-----	-----	-----	------	-----	-----	-----	------	-----	-----	-----	------	-----	-----	-----	------	-----	-----	-----	------	-----	-----	-----	------	-----	-----	-----	------	-----	-----	-----	------	-----	-----	-----	------	-----

THE INFORMATION ON THIS DOCUMENT IS THE PROPERTY OF BHARAT HEAVY ELECTRICALS LIMITED. IT MUST NOT BE USED DIRECTLY OR INDIRECTLY IN ANY WAY DETRIMENTAL TO THE INTEREST OF THE COMPANY.

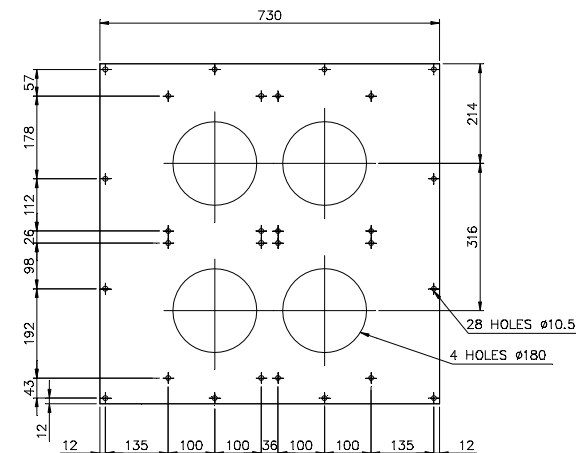
DRG NO 35216602586



ITEM-018
(4-3C)

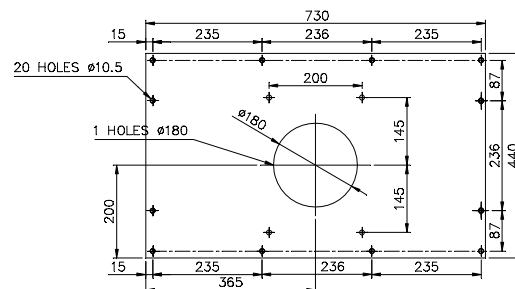


ITEM-019
(6-1C, Ø180 CBCT)






















ITEM-021

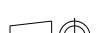
12-1C (FOR $\phi 180$ CBCT)



ITEM-022
(3-1C, ϕ 180 CBCT)

REF.DRG.NO.	REV	DATE	DRN	SKG	ITEM 022 ADDED. (DCA - 37988)	REV	DATE	DRN	SKG	ITEM 020 ADDED (DCA - 37351)	REV	DATE	DRN	SKG	ITEM 018 ADD. (DCA - 35650)	REV	DATE	DRN	AKN	ITEM 014 TO 017 ADDED. SHEET 04 ADDED. (DCA - 35068)	REV	DATE	DRN	SKG	ITEM 021 ADDED FOR 12-1C. SHEET 05 ADDED. (DCA 37386)	DEPT SWE CODE 409	UN. TOL.DIM.GR. M AA 0230208		SCALE 1: 7.5	WEIGHT (KG.) -	REF TO ASSY -	ITEM MO. -	NO.OF ITEMS 022
	09	14/02/23	CKD	AKHIL			07	13.11.21	CKD			AKHIL	05	22.09.18			CKD	AKHIL	08			14.12.21	CKD	AKHIL									
	APPD	AD	APPD	AD			APPD	AD	APPD			AD	APPD	AD			APPD	AD	APPD			AD											
SIGN.& DATE	06	12.05.20	DRN	SKG	ITEM 019 ADD. (DCA - 36539)	07	13.11.21	DRN	SKG	ITEM 020 ADDED (DCA - 37351)	08	14.12.21	DRN	SKG	ITEM 018 ADD. (DCA - 35650)	09	14.12.21	DRN	AKN	ITEM 014 TO 017 ADDED. SHEET 04 ADDED. (DCA - 35068)	10	15.01.24	DRN	SKG	ITEM 021 ADDED FOR 12-1C. SHEET 05 ADDED. (DCA 37386)	DEPT SWE CODE 409	UN. TOL.DIM.GR. M AA 0230208		SCALE 1: 7.5	WEIGHT (KG.) -	REF TO ASSY -	ITEM MO. -	NO.OF ITEMS 022
	APPD	AD	APPD	AD			APPD	AD	APPD			AD	APPD	AD			APPD	AD	APPD			AD											
INVENTORY NO.	05	22.09.18	DRN	SKG	ITEM 018 ADD. (DCA - 35650)	06	12.05.20	DRN	SKG	ITEM 019 ADD. (DCA - 36539)	07	13.11.21	DRN	SKG	ITEM 020 ADDED (DCA - 37351)	08	14.12.21	DRN	AKN	ITEM 014 TO 017 ADDED. SHEET 04 ADDED. (DCA - 35068)	09	14.12.21	DRN	SKG	ITEM 021 ADDED FOR 12-1C. SHEET 05 ADDED. (DCA 37386)	DEPT SWE CODE 409	UN. TOL.DIM.GR. M AA 0230208		SCALE 1: 7.5	WEIGHT (KG.) -	REF TO ASSY -	ITEM MO. -	NO.OF ITEMS 022
	APPD	AD	APPD	AD			APPD	AD	APPD			AD	APPD	AD			APPD	AD	APPD			AD											
INVENTORY NO.	05	22.09.18	DRN	SKG	ITEM 018 ADD. (DCA - 35650)	06	12.05.20	DRN	SKG	ITEM 019 ADD. (DCA - 36539)	07	13.11.21	DRN	SKG	ITEM 020 ADDED (DCA - 37351)	08	14.12.21	DRN	AKN	ITEM 014 TO 017 ADDED. SHEET 04 ADDED. (DCA - 35068)	09	14.12.21	DRN	SKG	ITEM 021 ADDED FOR 12-1C. SHEET 05 ADDED. (DCA 37386)	DEPT SWE CODE 409	UN. TOL.DIM.GR. M AA 0230208		SCALE 1: 7.5	WEIGHT (KG.) -	REF TO ASSY -	ITEM MO. -	NO.OF ITEMS 022
	APPD	AD	APPD	AD			APPD	AD	APPD			AD	APPD	AD			APPD	AD	APPD			AD											
INVENTORY NO.	05	22.09.18	DRN	SKG	ITEM 018 ADD. (DCA - 35650)	06	12.05.20	DRN	SKG	ITEM 019 ADD. (DCA - 36539)	07	13.11.21	DRN	SKG	ITEM 020 ADDED (DCA - 37351)	08	14.12.21	DRN	AKN	ITEM 014 TO 017 ADDED. SHEET 04 ADDED. (DCA - 35068)	09	14.12.21	DRN	SKG	ITEM 021 ADDED FOR 12-1C. SHEET 05 ADDED. (DCA 37386)	DEPT SWE CODE 409	UN. TOL.DIM.GR. M AA 0230208		SCALE 1: 7.5	WEIGHT (KG.) -	REF TO ASSY -	ITEM MO. -	NO.OF ITEMS 022
	APPD	AD	APPD	AD			APPD	AD	APPD			AD	APPD	AD			APPD	AD	APPD			AD											
INVENTORY NO.	05	22.09.18	DRN	SKG	ITEM 018 ADD. (DCA - 35650)	06	12.05.20	DRN	SKG	ITEM 019 ADD. (DCA - 36539)	07	13.11.21	DRN	SKG	ITEM 020 ADDED (DCA - 37351)	08	14.12.21	DRN	AKN	ITEM 014 TO 017 ADDED. SHEET 04 ADDED. (DCA - 35068)	09	14.12.21	DRN	SKG	ITEM 021 ADDED FOR 12-1C. SHEET 05 ADDED. (DCA 37386)	DEPT SWE CODE 409	UN. TOL.DIM.GR. M AA 0230208		SCALE 1: 7.5	WEIGHT (KG.) -	REF TO ASSY -	ITEM MO. -	NO.OF ITEMS 022
	APPD	AD	APPD	AD			APPD	AD	APPD			AD	APPD	AD			APPD	AD	APPD			AD											
INVENTORY NO.	05	22.09.18	DRN	SKG	ITEM 018 ADD. (DCA - 35650)	06	12.05.20	DRN	SKG	ITEM 019 ADD. (DCA - 36539)	07	13.11.21	DRN	SKG	ITEM 020 ADDED (DCA - 37351)	08	14.12.21	DRN	AKN	ITEM 014 TO 017 ADDED. SHEET 04 ADDED. (DCA - 35068)	09	14.12.21	DRN	SKG	ITEM 021 ADDED FOR 12-1C. SHEET 05 ADDED. (DCA 37386)	DEPT SWE CODE 409	UN. TOL.DIM.GR. M AA 0230208		SCALE 1: 7.5	WEIGHT (KG.) -	REF TO ASSY -	ITEM MO. -	NO.OF ITEMS 022
	APPD	AD	APPD	AD			APPD	AD	APPD			AD	APPD	AD			APPD	AD	APPD			AD											
INVENTORY NO.	05	22.09.18	DRN	SKG	ITEM 018 ADD. (DCA - 35650)	06	12.05.20	DRN	SKG	ITEM 019 ADD. (DCA - 36539)	07	13.11.21	DRN	SKG	ITEM 020 ADDED (DCA - 37351)	08	14.12.21	DRN	AKN	ITEM 014 TO 017 ADDED. SHEET 04 ADDED. (DCA - 35068)	09	14.12.21	DRN	SKG	ITEM 021 ADDED FOR 12-1C. SHEET 05 ADDED. (DCA 37386)	DEPT SWE CODE 409	UN. TOL.DIM.GR. M AA 0230208		SCALE 1: 7.5	WEIGHT (KG.) -	REF TO ASSY -	ITEM MO. -	NO.OF ITEMS 022
	APPD	AD	APPD	AD			APPD	AD	APPD			AD	APPD	AD			APPD	AD	APPD			AD											
INVENTORY NO.	05	22.09.18	DRN	SKG	ITEM 018 ADD. (DCA - 35650)	06	12.05.20	DRN	SKG	ITEM 019 ADD. (DCA - 36539)	07	13.11.21	DRN	SKG	ITEM 020 ADDED (DCA - 37351)	08	14.12.21	DRN	AKN	ITEM 014 TO 017 ADDED. SHEET 04 ADDED. (DCA - 35068)	09	14.12.21	DRN	SKG	ITEM 021 ADDED FOR 12-1C. SHEET 05 ADDED. (DCA 37386)	DEPT SWE CODE 409	UN. TOL.DIM.GR. M AA 0230208		SCALE 1: 7.5	WEIGHT (KG.) -	REF TO ASSY -	ITEM MO. -	NO.OF ITEMS 022
	APPD	AD	APPD	AD			APPD	AD	APPD			AD	APPD	AD			APPD	AD	APPD			AD											
INVENTORY NO.	05	22.09.18	DRN	SKG	ITEM 018 ADD. (DCA - 35650)	06	12.05.20	DRN	SKG	ITEM 019 ADD. (DCA - 36539)	07	13.11.21	DRN	SKG	ITEM 020 ADDED (DCA - 37351)	08	14.12.21	DRN	AKN	ITEM 014 TO 017 ADDED. SHEET 04 ADDED. (DCA - 35068)	09	14.12.21	DRN	SKG	ITEM 021 ADDED FOR 12-1C. SHEET 05 ADDED. (DCA 37386)	DEPT SWE CODE 409	UN. TOL.DIM.GR. M AA 0230208		SCALE 1: 7.5	WEIGHT (KG.) -	REF TO ASSY -	ITEM MO. -	NO.OF ITEMS 022
	APPD	AD	APPD	AD			APPD	AD	APPD			AD	APPD	AD			APPD	AD	APPD			AD											
INVENTORY NO.	05	22.09.18	DRN	SKG	ITEM 018 ADD. (DCA - 35650)	06	12.05.20	DRN	SKG	ITEM 019 ADD. (DCA - 36539)	07	13.11.21	DRN	SKG	ITEM 020 ADDED (DCA - 37351)	08	14.12.21	DRN	AKN	ITEM 014 TO 017 ADDED. SHEET 04 ADDED. (DCA - 35068)	09	14.12.21	DRN	SKG	ITEM 021 ADDED FOR 12-1C. SHEET 05 ADDED. (DCA 37386)	DEPT SWE CODE 409	UN. TOL.DIM.GR. M AA 0230208		SCALE 1: 7.5	WEIGHT (KG.) -	REF TO ASSY -	ITEM MO. -	NO.OF ITEMS 022
	APPD	AD	APPD	AD			APPD	AD	APPD			AD	APPD	AD			APPD	AD	APPD			AD											
INVENTORY NO.	05	22.09.18	DRN	SKG	ITEM 018 ADD. (DCA - 35650)	06	12.05.20	DRN	SKG	ITEM 019 ADD. (DCA - 36539)	07	13.11.21	DRN	SKG	ITEM 020 ADDED (DCA - 37351)	08	14.12.21	DRN	AKN	ITEM 014 TO 017 ADDED. SHEET 04 ADDED. (DCA - 35068)	09	14.12.21	DRN	SKG	ITEM 021 ADDED FOR 12-1C. SHEET 05 ADDED. (DCA 37386)	DEPT SWE CODE 409	UN. TOL.DIM.GR. M AA 0230208		SCALE 1: 7.5	WEIGHT (KG.) -	REF TO ASSY -	ITEM MO. -	NO.OF ITEMS 022
	APPD	AD	APPD	AD			APPD	AD	APPD			AD	APPD	AD			APPD	AD	APPD			AD											
INVENTORY NO.	05	22.09.18	DRN	SKG	ITEM 018 ADD. (DCA - 35650)	06	12.05.20	DRN	SKG	ITEM 019 ADD. (DCA - 36539)	07	13.11.21	DRN	SKG	ITEM 020 ADDED (DCA - 37351)	08	14.12.21	DRN	AKN	ITEM 014 TO 017 ADDED. SHEET 04 ADDED. (DCA - 35068)	09	14.12.21	DRN	SKG	ITEM 021 ADDED FOR 12-1C. SHEET 05 ADDED. (DCA 37386)	DEPT SWE CODE 409	UN. TOL.DIM.GR. M AA 0230208		SCALE 1: 7.5	WEIGHT (KG.) -	REF TO ASSY -	ITEM MO. -	NO.OF ITEMS 022
	APPD	AD	APPD	AD			APPD	AD	APPD			AD	APPD	AD			APPD	AD	APPD			AD											
INVENTORY NO.	05	22.09.18	DRN	SKG	ITEM 018 ADD. (DCA - 35650)	06	12.05.20	DRN	SKG	ITEM 019 ADD. (DCA - 36539)	07	13.11.21	DRN	SKG	ITEM 020 ADDED (DCA - 37351)	08	14.12.21	DRN	AKN	ITEM 014 TO 017 ADDED. SHEET 04 ADDED. (DCA - 35068)	09	14.12.21	DRN	SKG	ITEM 021 ADDED FOR 12-1C. SHEET 05 ADDED. (DCA 37386)	DEPT SWE CODE 409	UN. TOL.DIM.GR. M AA 0230208		SCALE 1: 7.5	WEIGHT (KG.) -	REF TO ASSY -	ITEM MO. -	NO.OF ITEMS 022
	APPD	AD	APPD	AD			APPD	AD	APPD			AD	APPD	AD			APPD	AD	APPD			AD											
INVENTORY NO.	05	22.09.18	DRN	SKG	ITEM 018 ADD. (DCA - 35650)	06	12.05.20	DRN	SKG	ITEM 019 ADD. (DCA - 36539)	07	13.11.21	DRN	SKG	ITEM 020 ADDED (DCA - 37351)	08	14.12.21	DRN	AKN	ITEM 014 TO 017 ADDED. SHEET 04 ADDED. (DCA - 35068)	09	14.12.21	DRN	SKG	ITEM 021 ADDED FOR 12-1C. SHEET 05 ADDED. (DCA 37386)	DEPT SWE CODE 409	UN. TOL.DIM.GR. M AA 0230208		SCALE 1: 7.5	WEIGHT (KG.) -	REF TO ASSY -	ITEM MO. -	NO.OF ITEMS 022
	APPD	AD	APPD	AD			APPD	AD	APPD			AD	APPD	AD			APPD	AD	APPD			AD											
INVENTORY NO.	05	22.09.18	DRN	SKG	ITEM 018 ADD. (DCA - 35650)	06	12.05.20	DRN	SKG	ITEM 019 ADD. (DCA - 36539)	07	13.11.21	DRN	SKG	ITEM 020 ADDED (DCA - 37351)	08	14.12.21	DRN	AKN	ITEM 014 TO 017 ADDED. SHEET 04 ADDED. (DCA - 35068)	09	14.12.21	DRN	SKG	ITEM 021 ADDED FOR 12-1C. SHEET 05 ADDED. (DCA 37386)	DEPT SWE CODE 409	UN. TOL.DIM.GR. M AA 0230208		SCALE 1: 7.5	WEIGHT (KG.) -	REF TO ASSY -	ITEM MO. -	NO.OF ITEMS 022
	APPD	AD	APPD	AD			APPD	AD	APPD			AD	APPD	AD			APPD	AD	APPD			AD											
INVENTORY NO.	05	22.09.18	DRN	SKG	ITEM 018 ADD. (DCA - 35650)	06	12.05.20	DRN	SKG	ITEM 019 ADD. (DCA - 36539)	07	13.11.21	DRN	SKG	ITEM 020 ADDED (DCA - 37351)	08	14.12.21	DRN	AKN	ITEM 014 TO 017 ADDED. SHEET 04 ADDED. (DCA - 35068)	09	14.12.21	DRN	SKG	ITEM 021 ADDED FOR 12-1C. SHEET 05 ADDED. (DCA 37386)	DEPT SWE CODE 409	UN. TOL.DIM.GR. M AA 0230208		SCALE 1: 7.5	WEIGHT (KG.) -	REF TO ASSY -	ITEM MO. -	NO.OF ITEMS 022
	APPD	AD	APPD	AD			APPD	AD	APPD			AD	APPD	AD			APPD	AD	APPD			AD											
INVENTORY NO.	05	22.09.18	DRN	SKG	ITEM 018 ADD. (DCA - 35650)	06	12.05.20	DRN	SKG	ITEM 019 ADD. (DCA - 36539)	07	13.11.21	DRN	SKG	ITEM 020 ADDED (DCA - 37351)	08	14.12.21	DRN	AKN	ITEM 014 TO 017 ADDED. SHEET 04 ADDED. (DCA - 35068)	09	14.12.21	DRN	SKG	ITEM 021 ADDED FOR 12-1C. SHEET 05 ADDED. (DCA 37386)	DEPT SWE CODE 409	UN. TOL.DIM.GR. M AA 0230208		SCALE 1: 7.5	WEIGHT (KG.) -	REF TO ASSY -	ITEM MO. -	NO.OF ITEMS 022
	APPD	AD	APPD	AD			APPD	AD	APPD			AD	APPD	AD			APPD	AD	APPD			AD											
INVENTORY NO.	05	22.09.18	DRN	SKG	ITEM 018 ADD. (DCA - 35650)	06	12.05.20	DRN	SKG	ITEM 019 ADD. (DCA - 36539)	07	13.11.21	DRN	SKG	ITEM 020 ADDED (DCA - 37351)	08	14.12.21	DRN	AKN	ITEM 014 TO 017 ADDED. SHEET 04 ADDED. (DCA - 35068)	09	14.12.21	DRN	SKG	ITEM 021 ADDED FOR 12-1C. SHEET 05 ADDED. (DCA 37386)	DEPT SWE CODE 409	UN. TOL.DIM.GR. M AA 0230208		SCALE 1: 7.5	WEIGHT (KG.) -	REF TO ASSY -	ITEM MO. -	NO.OF ITEMS 022
	APPD	AD	APPD	AD			APPD	AD	APPD			AD	APPD	AD			APPD	AD	APPD			AD											

BP 9099431163	003	5Tkx90x106 LG. ALUMINIUM SHEET		BP 1231712988		0.076	
				AA 12312		001	
BP 9099431155	002	5Tkx90x106 LG. ALUMINIUM SHEET		BP 1231712988		0.065	
				AA 12312		001	
BP 9099431147	001	5Tkx90x106 LG. ALUMINIUM SHEET		BP 1231712988	KG	0.079	
				AA 12312		001	
REMARKS	ITEM NO.	DESCRIPTION	STD.	MATL. CODE	A/C	UNIT	UNIT WT.
				MATL. SPCL.			QTY.

<div><div>बीएचईएल</div><div>BHEL</div></div>		HAKjr gsoh bysDV&hdYl fyveYsVm HAKsiky BHARAT HEAVY ELECTRICALS LTD. BHOPAL			uke NAME B.D.V.		qurk SIGN —		fnugkd DATE —		osfj k lqj k NE OF VAR.								
foHAKx DEPT SWE		vu_ Vky_ uki dh Js.kh UNTIL BMS. GR. M AA 0230208				vuqikr SCALE 1:1		HAKj fd_xk— WEIGHT (K.G.)		vs_M&k&bZax dk lanHAZ REF. TO ASSY. DRG. 3 521 10 01545		en d— ITEM NO. 024		en lqj k NE OF ITEM 003					
dksM CODE 409		'Ah"AZHLE CENTERING RING										vkjs[A d— DRAWING NO. 4 521 10 01538		iquREV. 03					
im"B d— SHT. No. 01										im"Bkso dh lqj k OF SHT. 02									

THE INFORMATION ON THIS DOCUMENT IS THE PROPERTY OF BHARAT HEAVY ELECTRICALS LIMITED
IT MUST NOT BE USED DIRECTLY OR INDIRECTLY IN ANY WAY DETRIMENTAL TO THE INTEREST OF THE COMPANY

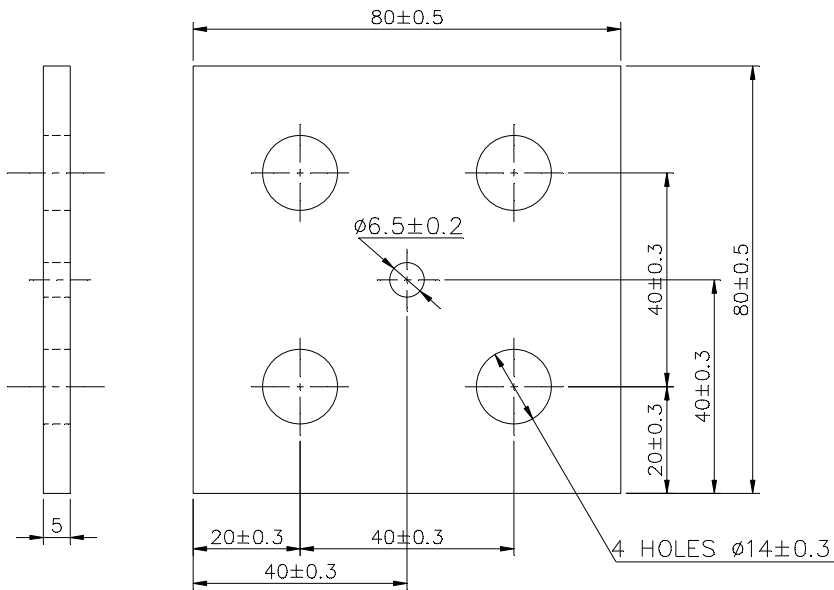
FIRST ANGLE PROJECTION (ALL DIMENSIONS ARE IN mm)

23/59

183

REV.	DATE	ALTERED	REV. 01	DATE	ALTERED	ADDITIONAL INFORMATION
		CHECKED			CHECKED	
		APPROVED			APPROVED	
			DRG. REDRAWN. MATL. WAS 4.8TK. TO PS 12306 (DCA 10384)		STATUS OF DRAWING M DISTRIBUTION □.C.-1 SWM-3 OF PRINTS TCX-1	

TOOL LIST
1492714 - DRILL JIG



REF. DRG. NO.	BP 9099430230										001		5TK.x80x80 AL. ALLOY SHEET												BP 1231712988 AA 12312												0.075																																																																																																																																																																																																																																																																																																																																																																																																																																																																																																																																																																																																																																																																																																																																																																																																																																																																																																																																																																																																																																																																																																																																																																																																																																																																																																																																																																																																																																																																																																																																																																																																																																																																																																																																																																																																																																																																																																																																																																																																																																																																																																																																																																																																																																																																																																																																																																																																																																																																																																																																																																																																																																																																																																																																																																																																																																																																																																																																																																																																																																																																																																																																																																																																																																																																																																																																																																																																																																																																																																																																																																																																																																																																																																																																																																																																																																																																																																																																																																																																																																																																																																																																																																																																																																																																																																																																																																																																																																																																																																																																																																																																																																																																																																																																																																																																																																																																																																																																																																																																																																																																																																																																																																																																																																																																																																																																																																																																																																																																																																																																																																																																																																																																		
	REMARKS										ITEM NO.		DESCRIPTION										STD		MATL. CODE										A/C		UNIT		UNIT WT.																																																																																																																																																																																																																																																																																																																																																																																																																																																																																																																																																																																																																																																																																																																																																																																																																																																																																																																																																																																																																																																																																																																																																																																																																																																																																																																																																																																																																																																																																																																																																																																																																																																																																																																																																																																																																																																																																																																																																																																																																																																																																																																																																																																																																																																																																																																																																																																																																																																																																																																																																																																																																																																																																																																																																																																																																																																																																																																																																																																																																																																																																																																																																																																																																																																																																																																																																																																																																																																																																																																																																																																																																																																																																																																																																																																																																																																																																																																																																																																																																																																																																																																																																																																																																																																																																																																																																																																																																																																																																																																																																																																																																																																																																																																																																																																																																																																																																																																																																																																																																																																																																																																																																																																																																																																																																																																																																																																																																																																																																																																																																																																																																																																																
																									MATL. SPCN.														QTY.																																																																																																																																																																																																																																																																																																																																																																																																																																																																																																																																																																																																																																																																																																																																																																																																																																																																																																																																																																																																																																																																																																																																																																																																																																																																																																																																																																																																																																																																																																																																																																																																																																																																																																																																																																																																																																																																																																																																																																																																																																																																																																																																																																																																																																																																																																																																																																																																																																																																																																																																																																																																																																																																																																																																																																																																																																																																																																																																																																																																																																																																																																																																																																																																																																																																																																																																																																																																																																																																																																																																																																																																																																																																																																																																																																																																																																																																																																																																																																																																																																																																																																																																																																																																																																																																																																																																																																																																																																																																																																																																																																																																																																																																																																																																																																																																																																																																																																																																																																																																																																																																																																																																																																																																																																																																																																																																																																																																																																																																																																																																																																																																																																																																
SIGN. & DATE	28 → CARD TYPE-3										28 → CARD TYPE-1										28 → CARD TYPE-2																																																																																																																																																																																																																																																																																																																																																																																																																																																																																																																																																																																																																																																																																																																																																																																																																																																																																																																																																																																																																																																																																																																																																																																																																																																																																																																																																																																																																																																																																																																																																																																																																																																																																																																																																																																																																																																																																																																																																																																																																																																																																																																																																																																																																																																																																																																																																																																																																																																																																																																																																																																																																																																																																																																																																																																																																																																																																																																																																																																																																																																																																																																																																																																																																																																																																																																																																																																																																																																																																																																																																																																																																																																																																																																																																																																																																																																																																																																																																																																																																																																																																																																																																																																																																																																																																																																																																																																																																																																																																																																																																																																																																																																																																																																																																																																																																																																																																																																																																																																																																																																																																																																																																																																																																																																																																																																																																																																																																																																																																																																																																																																																																																																																																		
	<div><div>बीएसईएल</div><div>BHEL</div></div>										HAKjr gsoh bysDV&hdYl fyfeVsM HAKsiky BHARAT HEAVY ELECTRICALS LTD. BHOPAL										uke NAME TSE										qlrk SIGN Sd/-										fnugkd DATE -										osfl_ dh la; k NO. OF VAR. -																																																																																																																																																																																																																																																																																																																																																																																																																																																																																																																																																																																																																																																																																																																																																																																																																																																																																																																																																																																																																																																																																																																																																																																																																																																																																																																																																																																																																																																																																																																																																																																																																																																																																																																																																																																																																																																																																																																																																																																																																																																																																																																																																																																																																																																																																																																																																																																																																																																																																																																																																																																																																																																																																																																																																																																																																																																																																																																																																																																																																																																																																																																																																																																																																																																																																																																																																																																																																																																																																																																																																																																																																																																																																																																																																																																																																																																																																																																																																																																																																																																																																																																																																																																																																																																																																																																																																																																																																																																																																																																																																																																																																																																																																																																																																																																																																																																																																																																																																																																																																																																																																																																																																																																																																																																																																																																																																																																																																																																																																																																																																																																																																																																				
INVENTORY NO.	foHAKx DEPT SWE										vu_ Vky_ uki dh js.kh UNTEL.DIMS. GR. M AA0230208																				vuqikr SCALE 1:1										HAKj fd_xk_ WEIGHT (KG.) -										vis_M&kbZax dk lanHAZ REF. TO ASSY. DRG. 35211001500										en d_ ITEM NO. 160										en la; k NO. OF ITEM 001																																																																																																																																																																																																																																																																																																																																																																																																																																																																																																																																																																																																																																																																																																																																																																																																																																																																																																																																																																																																																																																																																																																																																																																																																																																																																																																																																																																																																																																																																																																																																																																																																																																																																																																																																																																																																																																																																																																																																																																																																																																																																																																																																																																																																																																																																																																																																																																																																																																																																																																																																																																																																																																																																																																																																																																																																																																																																																																																																																																																																																																																																																																																																																																																																																																																																																																																																																																																																																																																																																																																																																																																																																																																																																																																																																																																																																																																																																																																																																																																																																																																																																																																																																																																																																																																																																																																																																																																																																																																																																																																																																																																																																																																																																																																																																																																																																																																																																																																																																																																																																																																																																																																																																																																																																																																																																																																																																																																																																																																																																																																																																																																																																
	dksm CODE 409																																																																																																																																																																																																																																																																																																																																																																																																																																																																																																																																																																																																																																																																																																																																																																																																																																																																																																																																																																																																																																																																																																																																																																																																																																																																																																																																																																																																																																																																																																																																																																																																																																																																																																																																																																																																																																																																																																																																																																																																																																																																																																																																																																																																																																																																																																																																																																																																																																																																																																																																																																																																																																																																																																																																																																																																																																																																																																																																																																																																																																																																																																																																																																																																																																																																																																																																																																																																																																																																																																																																																																																																																																																																																																																																																																																																																																																																																																																																																																																																																																																																																																																																																																																																																																																																																																																																																																																																																																																																																																																																																																																																																																																																																																																																																																																																																																																																																																																																																																																																																																																																																																																																																																																																																																																																																																																																																																																																																																																																																																																																																																																																																																																																																																						
	'Ah"AZ00E																																																																																																																																																																																																																																																																																																																																																																																																																																																																																																																																																																																																																																																																																																																																																																																																																																																																																																																																																																																																																																																																																																																																																																																																																																																																																																																																																																																																																																																																																																																																																																																																																																																																																																																																																																																																																																																																																																																																																																																																																																																																																																																																																																																																																																																																																																																																																																																																																																																																																																																																																																																																																																																																																																																																																																																																																																																																																																																																																																																																																																																																																																																																																																																																																																																																																																																																																																																																																																																																																																																																																																																																																																																																																																																																																																																																																																																																																																																																																																																																																																																																																																																																																																																																																																																																																																																																																																																																																																																																																																																																																																																																																																																																																																																																																																																																																																																																																																																																																																																																																																																																																																																																																																																																																																																																																																																																																																																																																																																																																																																																																																																																																																																																																																						

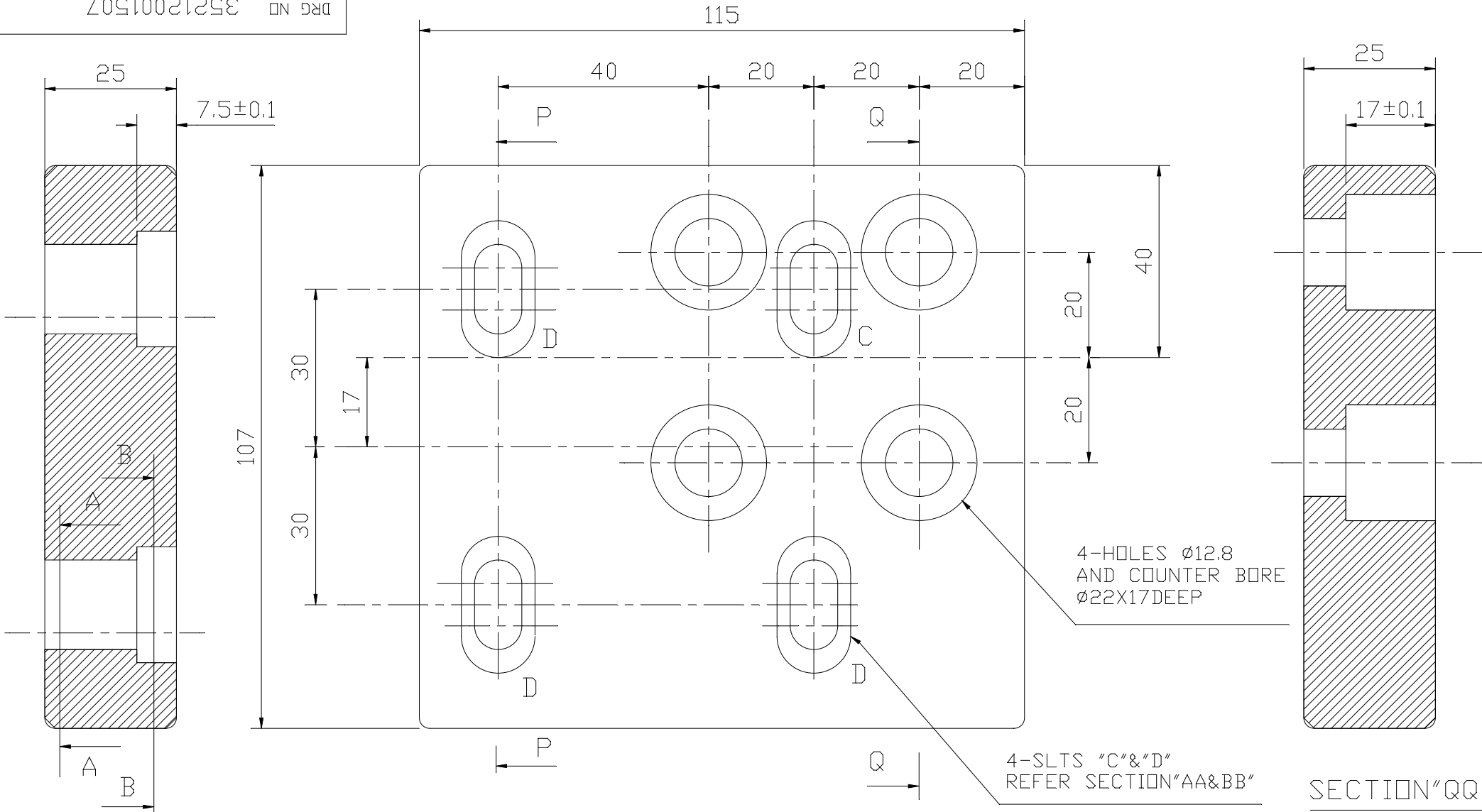
THE INFORMATION ON THIS DOCUMENT IS THE PROPERTY OF BHARAT HEAVY ELECTRICALS LIMITED.
IT MUST NOT BE USED DIRECTLY OR INDIRECTLY IN ANY WAY DETRIMENTAL TO THE INTREST OF THE COMPANY.

3AM1507.DWG
REF.DRG.NO.

SIGN.& DATE

INVENTORY NO.

DRG NO 35212001507

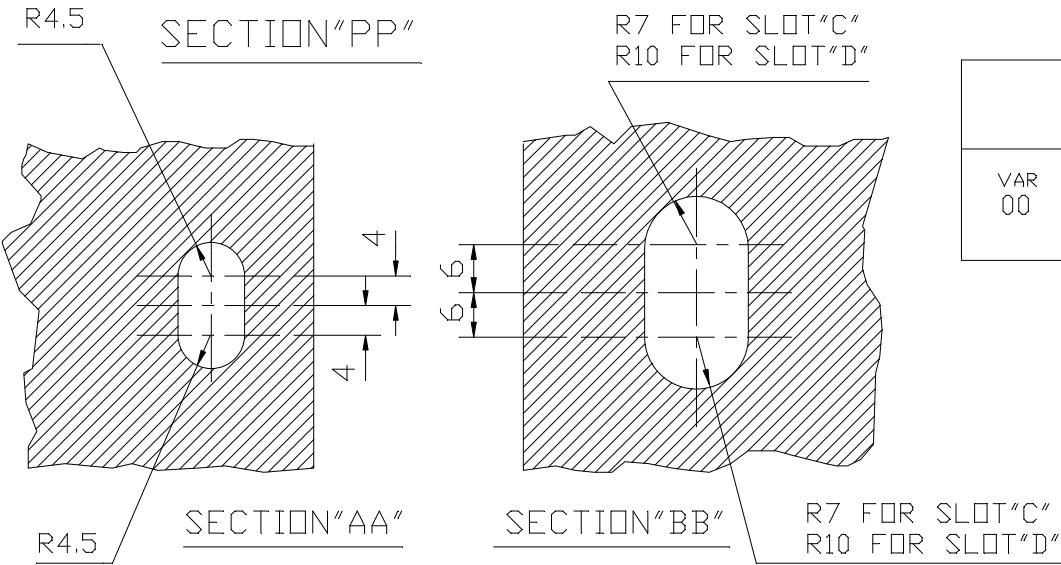


UNSPECIFIED TOLERANCES SHALL BE :-
FOR MACHINING MEDIUM AA0230208.


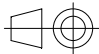
FINISH :-
SILVER PLATE TO SG15600.
(0.013 TO 0.015 TK.)
AREA OF PLATING=438 SQ.mm

NOTE —
REMOVE ALL SHARP CORNERS
FROM ALL EDGES.

TOOL LIST		
ITEM NO.	TOOL NO.	DESCRIPTION
001	1498812	DRILL JIG



	ST943359		001	25THK.X107X115 LG. AL.PLATE							0.830 001
VAR 00	REMARKS	VAR NO.	ITEM NO.	DESCRIPTION	STD	DRAWING NO.	IT.NO.	MATERIAL CODE	A	KG	UNIT WT.
							VAR	MATL. SPCN.	C	KG	QTY

ADDITIONAL INFORMATION			TYPE OF PRODUCT OR NAME OF CUST/PROJ										VCB(VM3AF)		
STATUS OF DRAWING															
DISTRIBUTION OF PRINTS			<div><div>बी.एच.ई.एल.</div><div></div></div> <div>BHARAT HEAVY ELECTRICALS LIMITED BHOPAL</div>				DRN	NAME		SIGN		DATE		NO. OF VAR	
BB RAD								11.1.83							
CKD															
dA;ZAy; izfr %%% 1							APPD	RPS				22.4.83		-	
REV	DATE		DEPT	UN. TOL.DIM.GR.			SCALE	WEIGHT	REF TO ASSY			ITEM	NO.OF		
06	10-95		SWE				1:1	0.830				MO.	ITEMS		
			CODE	SEE ABOVE					05212001503			001	001		
DRAWING REDRAWN. MATL.SPCN.WAS BP12392 MATL.CODE REMOVED			409						05212001503			001	001		
			TITLE						DRG NO			REV.			
									35212001507			06			
									SHT.NO.	01	NO.OF SHT.		01		

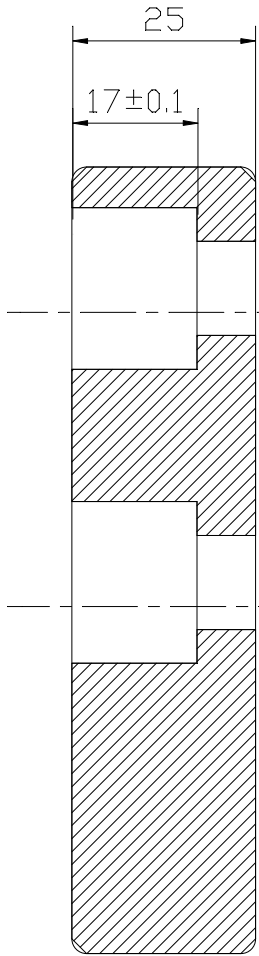
THE INFORMATION ON THIS DOCUMENT IS THE PROPERTY OF BHARAT HEAVY ELECTRICALS LIMITED.
IT MUST NOT BE USED DIRECTLY OR INDIRECTLY IN ANY WAY DETRIMENTAL TO THE INTREST OF THE COMPANY.

3AM1507.DWG
REF.DRG.NO.

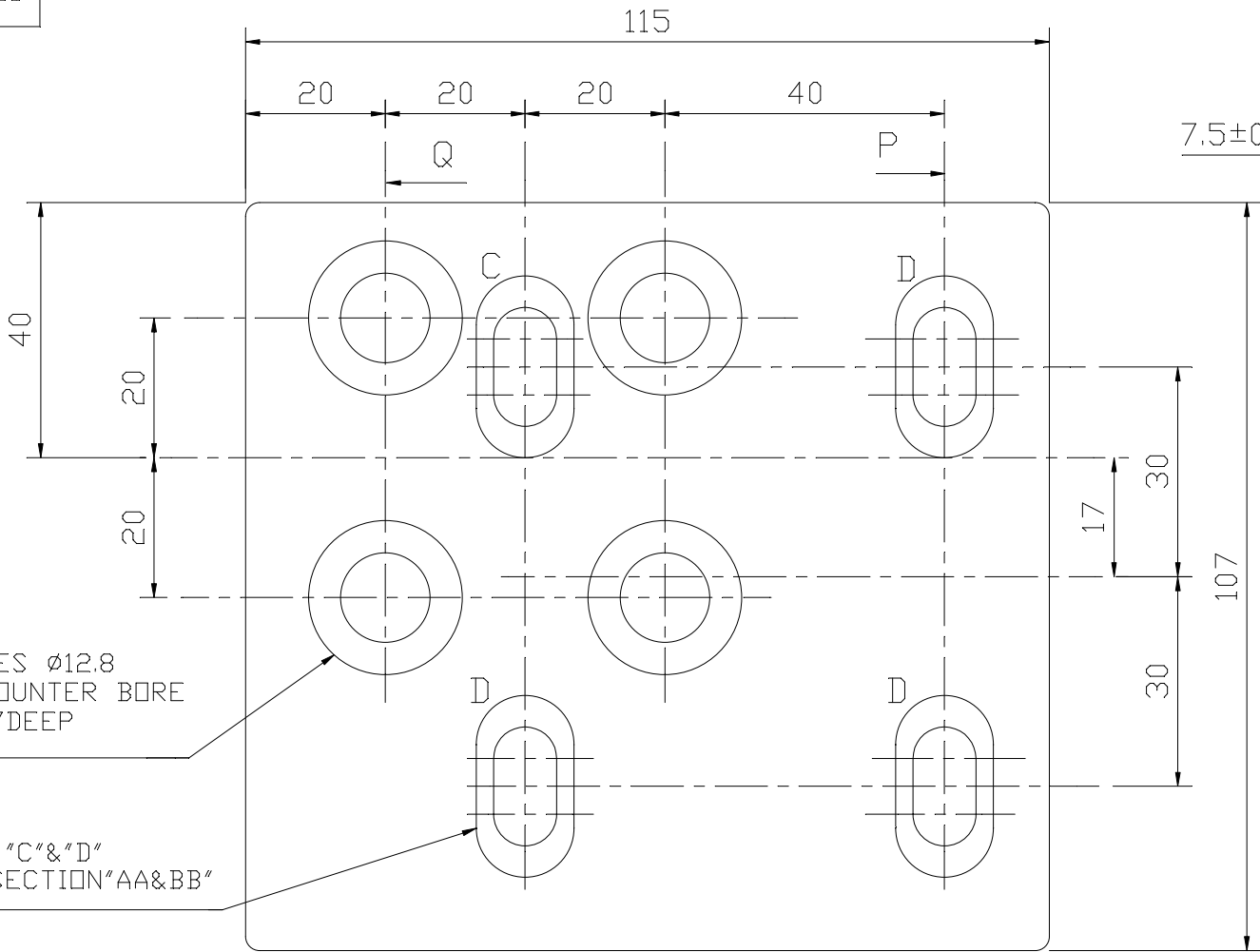
SIGN.& DATE

INVENTORY NO.

80510021258 DRG NO

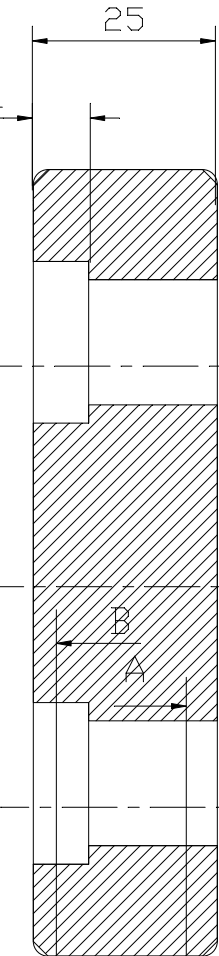


SECTION"QQ"

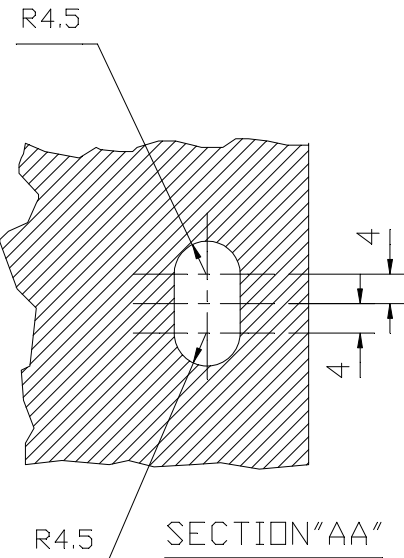


4-HOLES Ø12.8
AND COUNTER BORE
Ø22X17DEEP

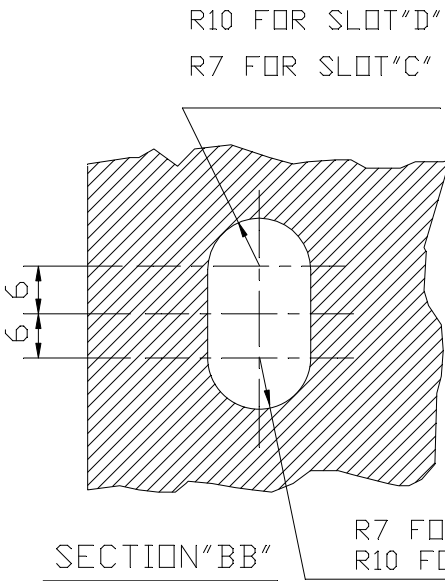
4-SLTS "C"&"D"
REFER SECTION"AA&BB"



SECTION"PP"



SECTION"AA"



SECTION"BB"

UNSPECIFIED TOLERANCES SHALL BE :-
FOR MACHINING MEDIUM AA0230208.

FINISH :-

SILVER PLATE TO SG15600.

(0.013 TO 0.015 TK.)

AREA OF PLATING=438 SQ.mm

NOTE —

REMOVE ALL SHARP CORNERS
FROM ALL EDGES.

TOOL LIST

ITEM NO.	TOOL NO.	DESCRIPTION
001	1498812	DRILL JIG

VAR 00	ST943360	VAR NO.	001	25THK.X107X115 LG. AL.PLATE	STD	DRAWING NO.	IT.NO.	MATERIAL CODE	A	UNIT WT.	0.830
	REMARKS						BP12391		C	QTY	001
								MATL. SPCN.			

ADDITIONAL INFORMATION

STATUS OF DRAWING

DISTRIBUTION OF PRINTS

dA;ZAY; izfr %%% 1
,l_ MCY;w_ ,e_ % 3
Vh_ lh_ ,DI_ %%% 1

REV 05
DATE 10-95

DRAWING REDRAWN.
MATL.SPCN.WAS PS12302

TYPE OF PRODUCT OR
NAME OF CUST/PROJ

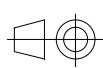
VCB(VM3AF)



BHARAT HEAVY ELECTRICALS LIMITED
BHOPAL

DEPT SWE
CODE 409

UN. TOL.DIM.GR.
SEE ABOVE



SCALE
1:1

WEIGHT
0.830

REF TO ASSY
05212001503

ITEM NO.
002

NO.OF ITEMS
001

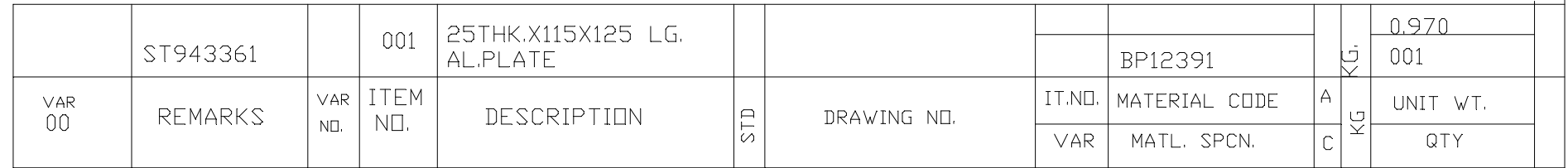
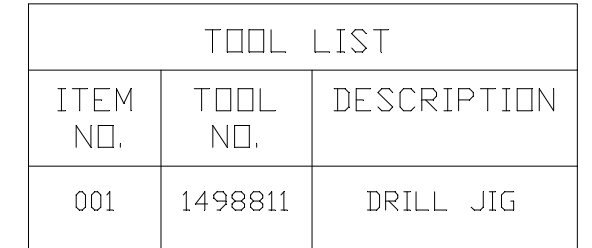
TITLE
ADOPTER
R-TOP,B-BOTTOM


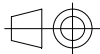
DRG NO
35212001508

REV.
05

SHT.NO. 01 NO.OF SHT. 01

INVENTORY NO.



ADDITIONAL INFORMATION			TYPE OF PRODUCT OR NAME OF CUST/PROJ													VCB(VM3AF)			
STATUS OF DRAWING			<div></div> <div>BHARAT HEAVY ELECTRICALS LIMITED BHOPAL</div>						DRN	NAME		SIGN		DATE		NO. OF VAR			
DISTRIBUTION OF PRINTS dA;ZAy; izfr %%% 1 ,l_ MCY;w_ ,e_ % 3 Vh_ lh_ ,DI_ %%% 1										BB RAD				11.1.83					
										CKD									
									APPD	RPS				22.4.83		-			
REV	DATE		DEPT	UN. TOL.DIM.GR.				SCALE	WEIGHT	REF TO ASSY			ITEM		NO.OF ITEMS				
05	10-95		SWE							05212001503			MO.						
			CODE	SEE ABOVE				1:1	0.970				003		001				
DRAWING REDRAWN. MATL.SPCN.WAS PS12302			TITLE						DRG NO					REV.					
			ADOPTER Y-PHASE						35212001509					05					
									SHT.NO.		01		NO.OF SHT.		01				