


567913/2023/HEP-SWM20961				PRODUCT STANDARD SWITCHGEAR ENGINEERING DIVISION		SG12450 REV.00 PAGE 1 OF 3		
COPYRIGHT AND CONFIDENTIAL The information on this document is the property of Bharat Heavy Electricals Limited It must not be used directly or indirectly in any way detrimental to interest of Co.		<u>TECHNICAL SPECIFICATION FOR VCB SHROUD FOR VM12 SWITCHGEARS</u>						
		NOTE TO SUPPLIER: Technical evaluation of offer shall be based on data furnished in Table-A.						
		<p>(1) Scope: Supply of moulded insulating PVC shrouds/Polyolefin Shroud suitable for 12 kV VCB Poles.</p> <p>Minimum Thickness of the PVC/Polyolefin shroud for various application and 12 kV voltage rating is 3 mm.</p> <p>(2) Color: RED.</p> <p>(3) Documents to be furnished by the vendor along with the offer: -</p> <p>(a) Test certificate for all the tests specified in Table-A of this specification.</p> <p>(b) List of previous supplies of similar items for switchgear application along with the year of supply. Party should have minimum of 2 years of experience in supply of similar components.</p> <p>(4) Acceptance Criteria:</p> <p>(a) All New Vendor to submit 2 set of sample with test certificates as per Table for verification at BHEL</p> <p>(b) Dimensional checks as per BHEL drawing/BHEL Approved Drawing (For alternate similar design/drawing, approval shall be taken from BHEL before manufacturing).</p> <p>(c) Tests mentioned at Sl. No. 1, 2,3,5,8 & 11 of table-A of this specification shall be conducted on 2 No. samples from each lot for verification of properties</p> <p>(5) Supply Condition:</p> <p>(a) 1 set of VCB Shroud shall be properly packed in corrugated box to avoid transit damage and scratches during handling.</p>						
REV. ALTD. APPD. DATE.		PRINTS TO:- SWM(PLNG) SWM (TEST) QCX (SCR) CONTRACT (SWE)		APPROVED AD PREPARED AT			ISSUED NM	DATE 13.05.23



PRODUCT STANDARD

SWITCHGEAR ENGINEERING DIVISION

SG12450 REV. 00

PAGE 2 OF 3

(6) **Properties:** As per Table-A below:

Table-A

S. No.	Property	Test Method	Required Value	Value Offered
1.	A.C. Voltage withstand	IEC 60243-1	H.V test between Phase to earth 35 kV/1 minute for 12 kV Rating	
2.	Dielectric Strength (kV/mm)	IEC 60243-1	8.5 kV/ mm (min.)	
3.	Volume Resistivity	ASTM D257	$2 \times 10^{10} - 1 \times 10^{11}$ ohm-cm	
4.	Flammability	UL94	Self-Extinguishing (UL94-V0 Compliant)	
5.	Water absorption	ASTM D570	0.5% (max.)	
6.	Tensile Strength	ASTM D 638	10 MPa (min)	
7.	Ultimate elongation	ASTM D 638	300% (min.)	
8.	Hardness		75-85 Shore A	
9.	Continuous Temperature Withstand		105° C	
10.	Comparative Tracking Index(CTI),Volts	IEC 60112-2003	>600	
11.	Insulation Resistance (with 5 kV megger)	End to End (refer Fig. 2)	100 G Ohm (min.)	

(7) **Identification: -**

Supplier shall provide appropriate markings on each components giving following Details on inside surface-
Supplier Identification Mark.
Drawing part no.

COPYRIGHT AND CONFIDENTIAL

The information on this document is the property of Bharat Heavy Electricals Limited
It must not be used directly or indirectly in any way detrimental to interest of Co.



PRODUCT STANDARD
SWITCHGEAR ENGINEERING DIVISION

SG12450 REV. 00

PAGE 3 OF 3

COPYRIGHT AND CONFIDENTIAL

The information on this document is the property of Bharat Heavy Electricals Limited
It must not be used directly or indirectly in any way detrimental to interest of Co.

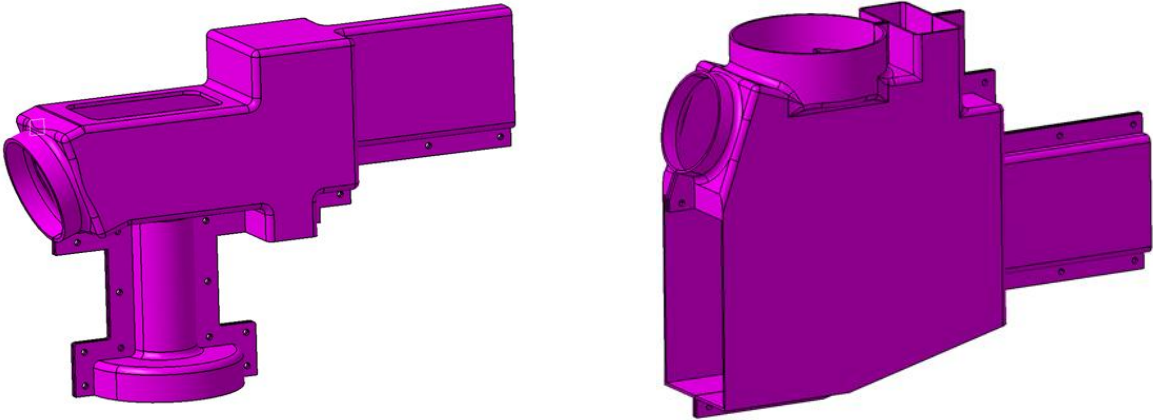


FIG-1 (for Representation only)

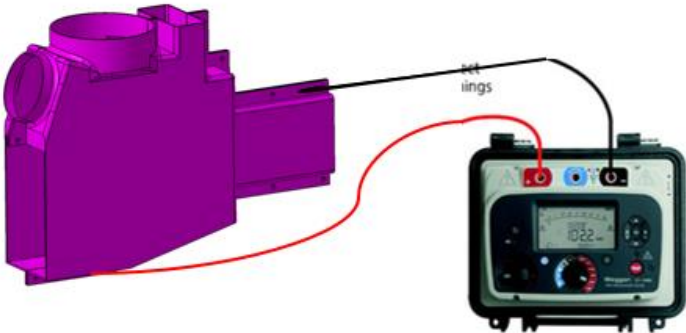


FIG-2