

533397/2023/HEP-SWM20961



PRODUCT STANDARD

SWITCHGEAR ENGINEERING DIVISION

SG12426 REV.02

PAGE 1 OF 3

TECHNICAL SPECIFICATION FOR BUSBAR SHROUDS/SEALING COVERS OF VM12/VM36 SWITCHGEARS

NOTE TO SUPPLIER:

Technical evaluation of offer shall be based on data furnished in Table-A.

(1) Scope:

Supply of moulded insulating PVC shrouds suitable to cover various types of joints between two conductors for switchgear application. The thickness of PVC Shroud shall be 4 ± 0.5 mm (for 12kV application) and 5 ± 0.5 mm (for 36kV application). Thickness of PVC sealing covers shall be 3 ± 0.5 mm.

PVC Shrouds and Sealing Covers will be supplied inline with BHEL drawing enclosed with the enquiry. Typical view of the Shroud & Sealing cover as shown in Fig.1.

(2) Colour : BLACK / RED.**(3) Properties:** As per Table-A below:

S. No.	Property	Test Method	Required Value	Value Offered
1.	A.C. Voltage withstand	H.V test between Phase to earth 35 kV/1 minute	Should be able to withstand at min distance of 90mm	
2.	Volume Resistivity	ASTM D257	1×10^9 - 1×10^{11} ohm-cm	
3.	Flammability	UL94	Self-Extinguishing (UL94-V0 Compliant)	
4.	Water absorption	ASTM D570	0.8% (max.)	
5.	Tensile Strength	ASTM D 638	10 MPa	
6.	Ultimate elongation	ASTM D 638	300%	
7.	Hardness		75-85 Shore A	

COPYRIGHT AND CONFIDENTIAL

The information on this document is the property of Bharat Heavy Electricals Limited. It must not be used directly or indirectly in any way detrimental to interest of Co.

REV.	02	PRINTS TO:-		APPROVED		
ALTD.	AKHIL	SWM(PLNG)		N BHOGAL		
APPD.	M.A.K.	SWM (TEST)		PREPARED	ISSUED	DATE
DATE.	02.11.2015	QCX (SCR) CONTRACT (SWE)		AKHIL	APS	20.04.2014

533397/2023/HEP-SWM20961



PRODUCT STANDARD

SWITCHGEAR ENGINEERING DIVISION

SG12426 REV. 02

PAGE 2 OF 3

(4) Documents To Be Furnished By The Vendor Along With Their Offer:-

- (a) Test certificate for all the tests specified in Table-A of this specification.
- (b) List of previous supplies of similar items for switchgear application along with the year of supply. Party should have minimum of 2 years of experience in supply of similar components.

(5) Acceptance Criteria:

- (a) Dimensional checks as per BHEL approved drawing.
- (b) Tests mentioned at Sl. No. 1, 2 & 4 of table-A of this specification shall be conducted on 2 No. samples from each lot for verification of properties.

(6) Supply Condition:

- (a) Shrouds/Sealing cover shall be properly packed in corrugated box to avoid transit damage and scratches during handling.

(7) Identification :-

Supplier shall provide appropriate markings on each components giving following
 Details on inside surface-
 Supplier Identification Mark.
 Drawing part no.

COPYRIGHT AND CONFIDENTIAL

The information on this document is the property of Bharat Heavy Electricals Limited
 It must not be used directly or indirectly in any way detrimental to interest of Co.



PRODUCT STANDARD
SWITCHGEAR ENGINEERING DIVISION

SG12426 REV. 02

PAGE 3 OF 3

COPYRIGHT AND CONFIDENTIAL

The information on this document is the property of Bharat Heavy Electricals Limited
It must not be used directly or indirectly in any way detrimental to interest of Co.

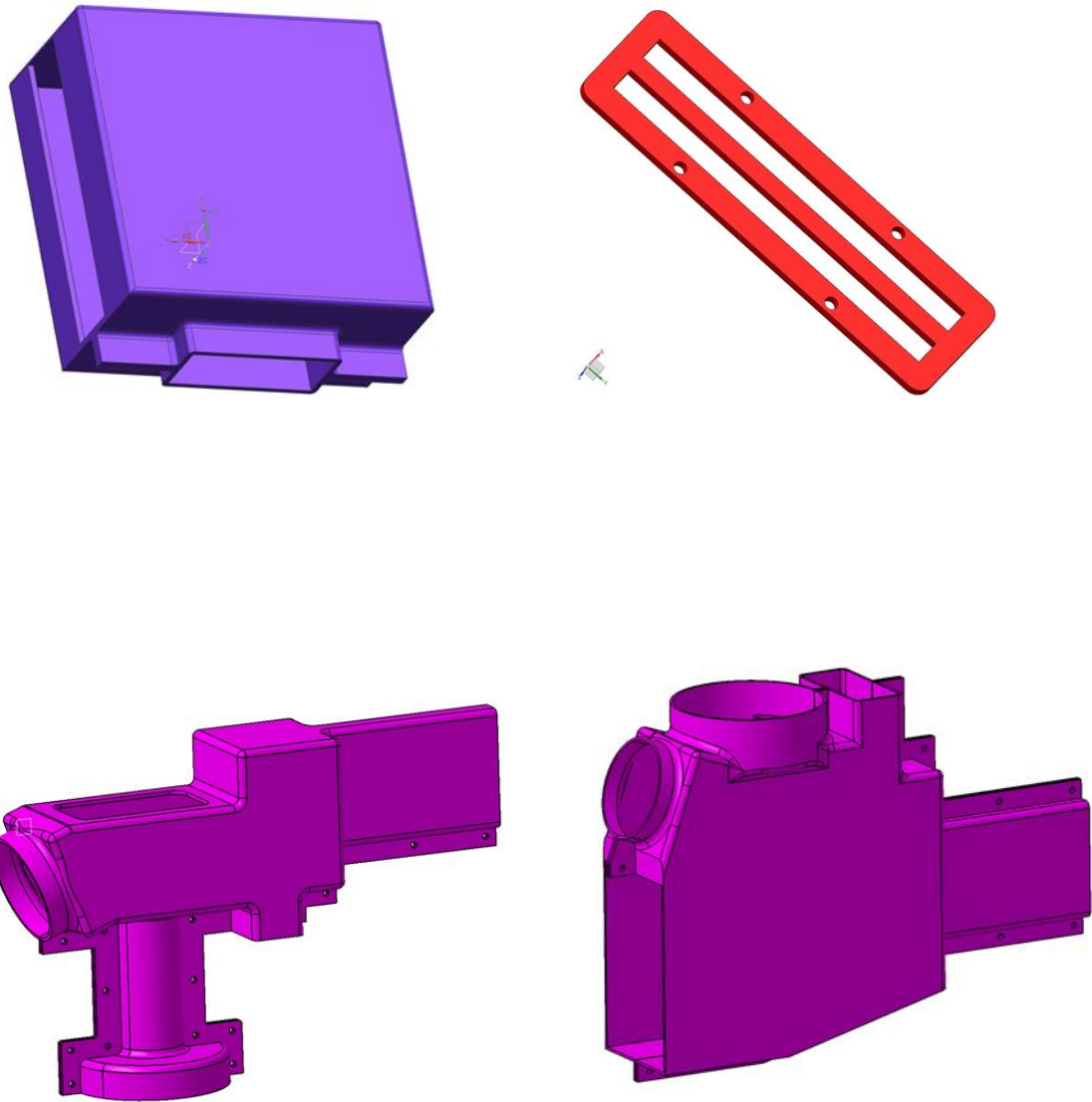


FIG-1