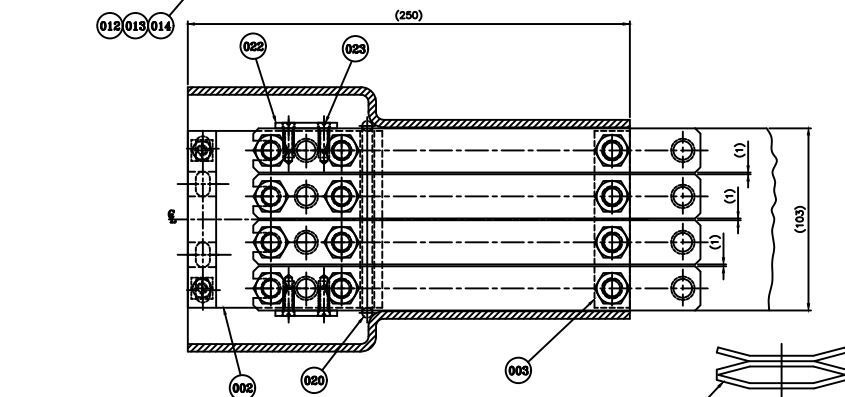


--	--

DRG. NO. 1 521 20 01531

VAR.00


DETAIL 'X'

TOOL LIST		
IT./VAR.	TOOL	DESCRIPTION
VAR.00-07	1564250	SETTING FIXTURE
VAR.00-07	1565236	LOAD CELL

VAR.	ORDERING TABLE								
	PARTICULARS								
	PHASE	RATED NORMAL CURRENT IN AMP.	SHORT TIME CURRENT FOR 3 SEC. IN KA.	TYPE OF INTERRUPTER	GES NO.	TYPE OF POLE HEAD	WEIGHT IN KG.	TYPE OF PRODUCT	REMARKS
00	R Y B	2500 & 2000	40/44	C1	409870013	AL. CASTING	18.006	VM-12	
01	B	2500 & 2000	40/44	C1	—	—	18.006	VM-12	
02	R	2500 & 2000	40/44	C1	—	—	18.006	VM-12	
03	R Y B	1800	25/31.5/40/44	81,82,B14,C1	409870014	AL. CASTING	13.808	VM-12	
04	R Y B	630 , 800 & 1250	25/28.3	B14/EQUIMOUNT	409870015	STL. FURNISHED	13.808	VM-12	
05	R Y B	800	20	W43599M3	—	AL. CASTING	7.462	VM-12	FOR 12TK. F.
06	R Y B	1250	20	W43599M3	—	AL. CASTING	9.310	VM-12	FOR 12TK. F.
07	R Y B	1800 & 2000	28.3	C2	—	AL. CASTING	7.406	VM-24	
08	R Y B	2750	40/44	D1	409500167	AL. CASTING	18.006	VM-12	
09	R Y B	2500	25/31.5	D2/W35871P	—	AL. CASTING	18.006	VM-24/36	OR W/ SHIPED DOWN IN HOL. DIRECTOR

NOTES:-

1. NUTS ITEM Q21 TO BE SO ADJUSTED THAT CONTACT FORCE "F" APPLIED IN VERTICAL DIRECTION "B" IS OBTAINED. NUTS ON 30-34 KG. PER PAIR OF FINGERS WITH THE HELP OF PRESSURE GAUGE TESTING TOOL NO. 1565236.
2. JAW CONTACT ASSY. SHOULD BE CHECKED 5% FOR CONTACT PRESSURE BY QCCX.
3. AFTER TIGHTENING THE LOCKNUTS (ITEM Q21) BY 4.6 KG. M. TORQUE USING TORQUE SPANNER, SMEAR "LOCTITE PENET RATING FLUID 290" AND MARK THEM WITH VERTICAL LINE OF RED PAINT.
4. EVERY ASSEMBLY SHALL BE MARKED SUPPLIER NAME, LOGO, PO. NO., SERIAL NO., SUPPLY DATE & BATCH NO. TO BE PUNCHED/LASER PRINT AND "TESTED OK" BY QCCX AT LOCATION MARKED THUS @ AND SHALL BE MAINTAINED IN RECORD REGISTER.
5. SCHEME FOR NUMBERING OF CONTACT ASSY. SHALL BE AS UNDER-



6. CONTACT FORCE IN DIRECTION 'B' SHALL BE MEASURED BY CONTACT FORCE DEVICE OF FOLLOWING MAKE/MODEL:
LOAD CELL:- MODEL DS051L9 OF M/S IPA INDIA PVT LTD OR EQUIVALENT.
INDICATOR FOR READING:- MODEL DK345A9 OF M/S IPA INDIA PVT LTD OR EQUIVALENT.

DATE	ALTERED	AR	REV.	DATE	ALTERED	K.S.MUNI	REV.	DATE	ALTERED
2.09.18	CHECKED	AD	06	12.03.10	CHECKED	ASHIL	07	08.01.010	CHECKED
	APPROVED	AD			APPROVED	MAJUMAN			APPROVED

***NOTE FOR ITEM 16:-**

1. SCREW LENGTH FOR TOP JAW CONTACT ASSEMBLY SHALL BE M12X60 & FOR BOTTOM JAW CONTACT M12X75

					004										037	BOLT HEX. A M10 x 80 - 8.8				AA 7111122402	KG.	0.055	
					004	004									036	WASHER SPG. SC B12				AA 7164002070	KG.	0.001	
					004	004									035	WASHER MCD. 13 ST				AA 7161001072	KG.	0.001	
					001	001							BP9069467303	034	O' RING	4 521 10 01703	003				KG.	0.015	
					001	001							ST 943491	033	SPACER	4 521 60 01510	001				KG.	0.101	
						004							BP9048467261	032	ISOLATING CONTACT (6 TK.x25)	3 521 10 01710	001				KG.	0.339	
					001	001							BP9048467296	031	CONNECTOR (12 TK.x65)	3 521 10 01711	001				KG.	1.290	
													ST 943784	030	CONNECTOR (16 TK.x78)	3 521 10 01672	002				KG.	1.716	
						001	001						ST 943785	026	O' RING	4 521 10 01703	002				KG.	0.020	
						001	001							027	SPACER	4 521 10 01707	001				KG.	0.240	
													ST943783	025	CONNECTOR (16 TK.x78)	3 521 10 01672	001				KG.	1.716	
001	001	001			001	001	001	001	001					024	NUT HEX. A M8					AA 7151115024	KG.	0.010	
004		004			004	004	004	004	004					023	SCREW HEX. SLT. A M6 x 12 - 8.8					BP 7121125966	KG.	0.020	
002		002			002	002	002	002	002					022	STOPPER PLATE	4 521 10 01708	001				KG.	0.030	
008		008	004	004	006	006	008	008	008					021	NUT HEX. A M10-8					AA 7151115032	KG.	0.015	
001	001	001					001	001	001	ST 943715	020	O' RING	4 521 10 01703	001							KG.	0.020	
004		004			004	004	004	004	004	ST 926836	018	WASHER	4 509 63 01521	001							KG.	0.006	
004	004	004			004	004	004	004	004	ST 910179	017	DISC WASHER	D9286056	003							KG.	0.006	
004		004	004	004	004	004	004	004	004		016*	SCREW. HEX. A M12 x 60 - 8.8								AA 7121123428	KG.	0.068	
							001			ST 946079	015	CONNECTOR (16 TK.x100)	3 521 10 01688	002							KG.	2.450	
		002	002	002	002	002	002	002	002		014	WASHER SPG. SC B8								AA 7164002045	KG.	0.001	
		002	010	010	002	002	002	002	002		013	WASHER MCD 6.4 ST								AA 7161001048	KG.	0.001	
		002		002	002	002	002	002	002	ST 926106	012	INSULATING SCREW	4 509 50 01518	002							KG.	0.002	
		001	001	001	001	001	001	001	001	BP9069468425	011	SHROUD	1 521 20 01530	001							KG.	0.700	
004		004	002	002	003	003	004	004	004		010	BOLT HEX. A M10 x 75 8.8								AA 7111122127	KG.	0.050	
008	008	008	004	004	006	006	008	008	008		009	LOCK NUT PVLNG TORO BP M10-8								AA 7159101057	KG.	0.015	
								001		ST 946078	008	CONNECTOR (16 TK.x100)	3 521 10 01688	001							KG.	2.450	
008		008	004		006	006	008	008	008		007	BOLT HEX. A M10 x 90 - 8.8								AA 7111122135	KG.	0.080	
		040	020	020	030	030	040	040	040		006	WASGGER MCD. 10.5 ST								AA 7161001064	KG.	0.002	
024	024	024	012	012	018	018	024	024	024	ST 910178	005	DISC SPRING	D9286056	002							KG.	0.010	
016	016	016	008	008	012	012	016	016	016	ST 943542	004	SPRING	4 521 60 01501	001							KG.	0.013	
001		001					001	001	001		003	SPACER	4 521 10 01678	001							KG.	0.310	
									001	ST 926724	002	CONNECTOR (L) (16 TK.x100)	3 521 10 01610	001							KG.	2.450	
008	008	008	004		006	006	008	008	008	ST 943452	001	ISOLATING CONTACT (10 TK.x25)	3 521 10 01604	001							KG.	0.580	
VAR09	VAR08	VAR07	VAR06	VAR05	VAR04	VAR03	VAR02	VAR01	VAR.00	REMARKS	VAR NO	ITEM NO	DESCRIPTION	QTY	DRAWING NO.	ITEM VAR	MATERIALS	UNIT WT.	UNIT CITY				

ADDITIONAL INFORMATION

STATUS OF DRAWING

DISCONTINUOUS: 00 0000

DISTRIBUTION OF PRINT
CUSTOMER - 4
SWER. SHOP-3
SWER TEST 1

REV.	DATE	ALTERED
02	28.09.98	CHECKED
		APPROVED

उत्पाद का प्रकार या

TYPE OF PRODUCT OR
NAME OF CUSTOMER/PROJECT

प्रमाण अथवा हेतु



DEPT. SWE	जन.सम. नाम की श्रेणी	E
कोड 409	UNTOI. DIMS. GR.	

VM-12/VMN-12/NM-24

[illegible]

न्यास लिमिटेड	क्याया DRN.	नाम/ NAME B.R.G.	हस्ता/ SIGN S/-
---------------	----------------	---------------------	--------------------

TRICALS LTD.	CO.	M.S.R.	Sd/-
--------------	-----	--------	------

APPD.	J.S.P.	Sd/-
-------	--------	------

अनुपात SCALE	भार (कि.ग्राम) WEIGHT (K.G.)	उत्प्रे. हार्डिंग का सेकर्म REF. TO ASSY. INCH.
-----------------	---------------------------------	--

1:1	-	35212001714
		35212001714

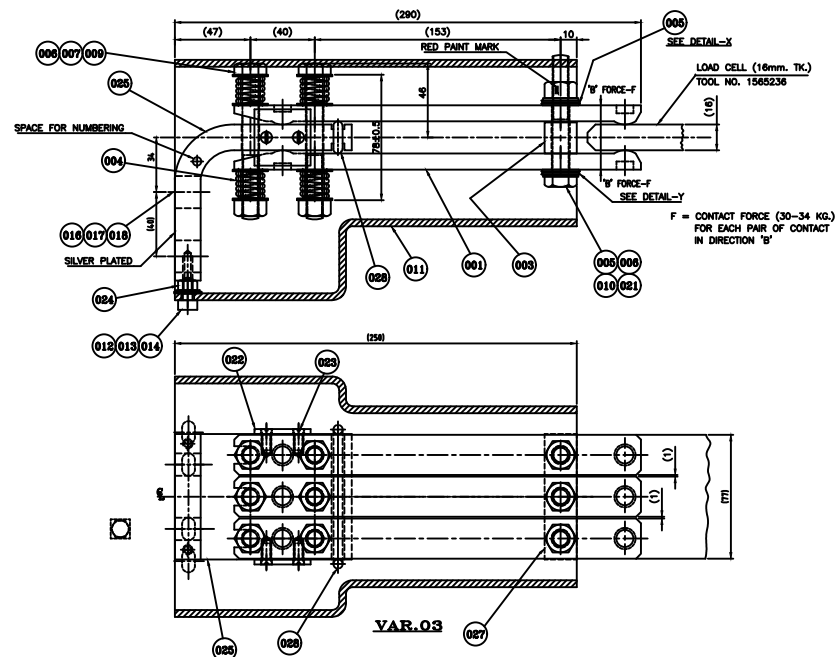
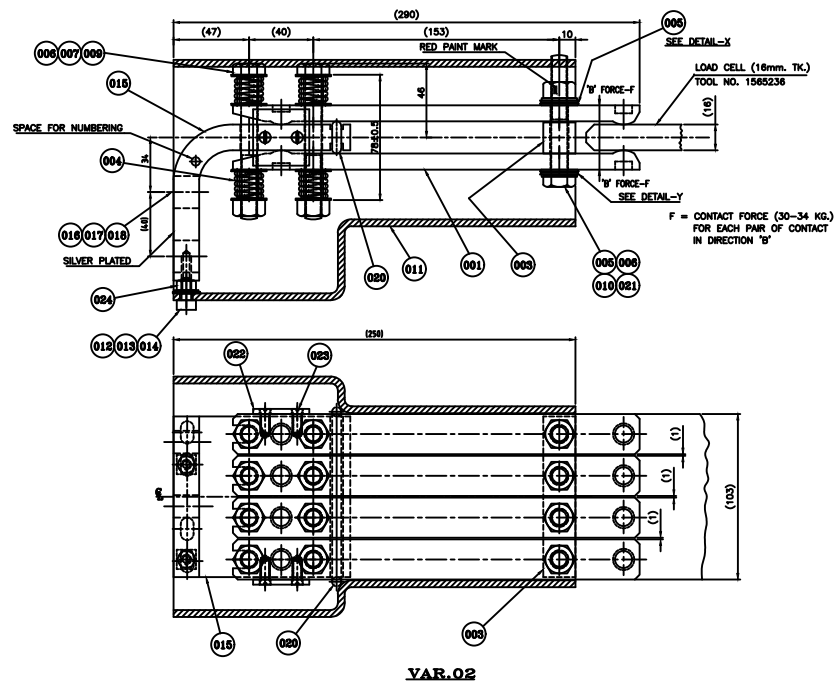
हार्डिंग क्र./DRAWING NO.	
---------------------------	--

CONTACT ASSY.	1 521 20 01
---------------	-------------

	पृष्ठ सं./पृष्ठ. NO. 01	पृष्ठ सं.
--	-------------------------	-----------

11	12
----	----

1

[illegible][illegible]

(DCA 09114)

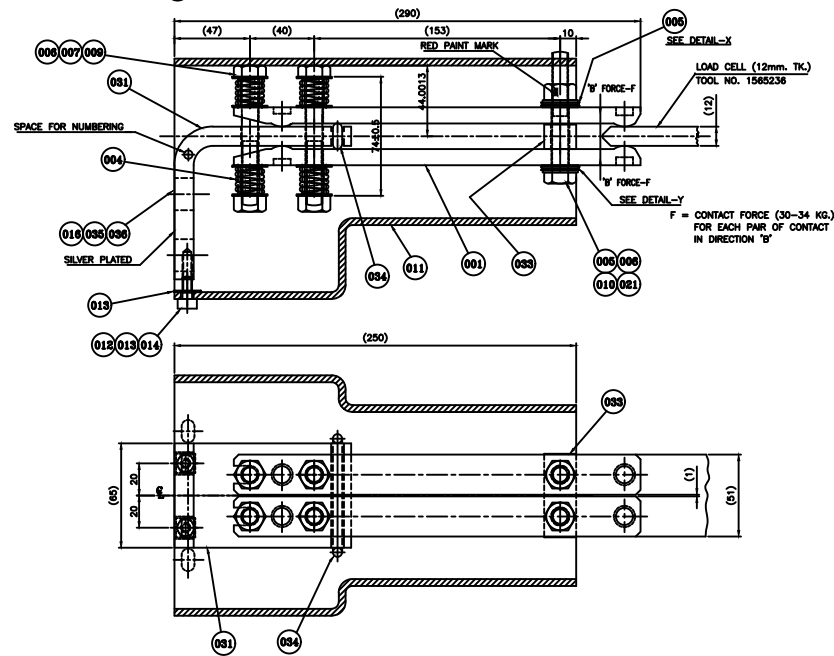
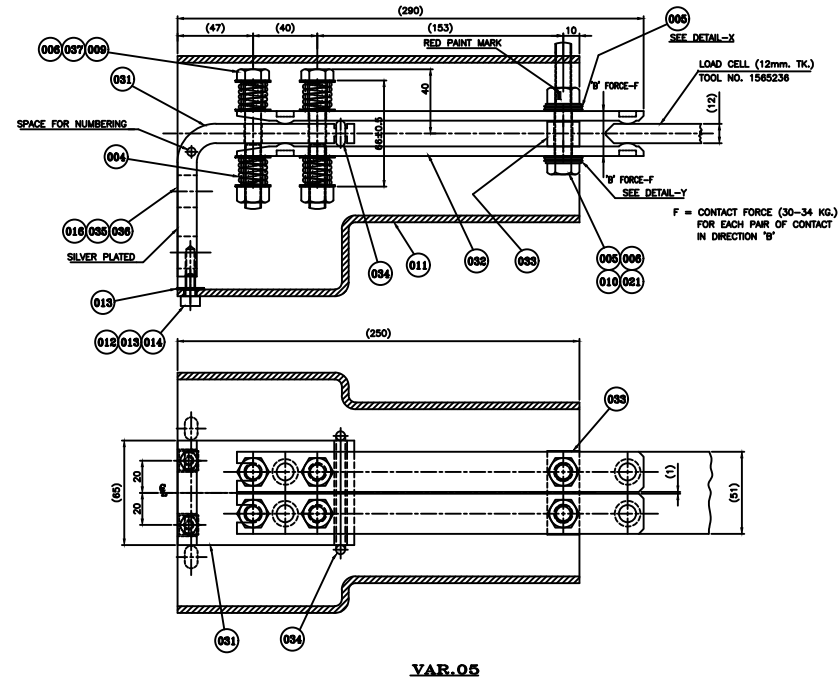
JAW TYPE ISOLATION

FACT ASSY.		10	
PLATE NO./SHT. NO. 02	पृष्ठी नं संख्या/NO. OF SHT. 0		

15212001531--R08--S03
REF. ID: A6

1

SDIS



REV.	DATE	ALTERED	SIG	REV.	DATE	ALTERED
10	25.05.19	CHECKED	AMH	00	12.09.18	CHECKED
		APPROVED	AD			APPROVED
ZONE	NOTE-2 UPDATED.			ZONE	NOTE-4 MODIFIED.	
	(DCA 35862)				(DCA 35844)	

DATE	ALTERED	K.S.MAH
12.03.10	CHECKED	AKHIL
	APPROVED	MAKHA

NOTE FOR ITEM 016 ADDED

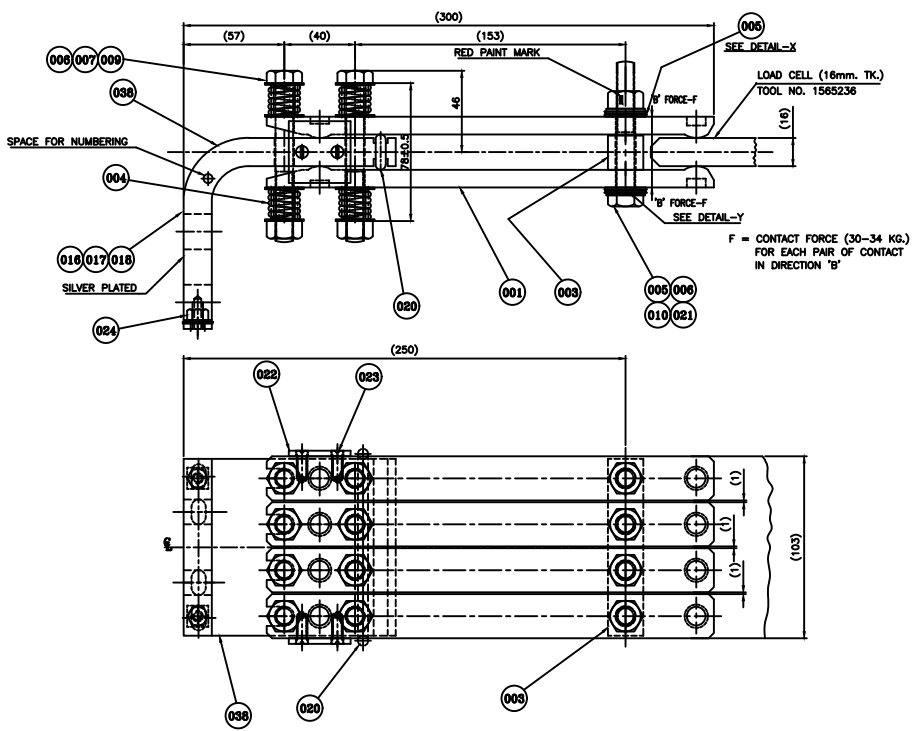
(DCA 29638)

REV.	DATE	ALTERED	P.PARE
07	08.01.010	CHECKED	K.S.MMM
		APPROVED	DMA
ZONE	WPL 09 & IT. 050 ADDED. IT. 011 & REMOVED FROM WPL07 (DCA 29481)		

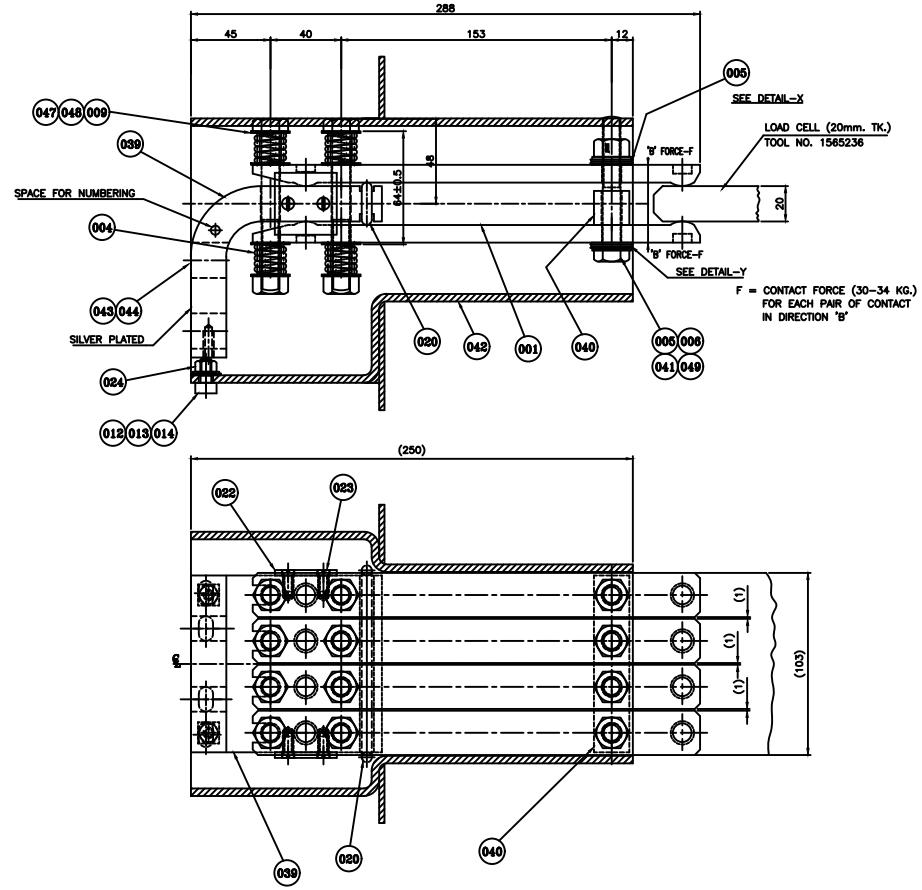
REV.	DATE	ALTERED
06	19.04.07	CHECKED
		APPROVED
ZONE	CONTACT FORCE MEASUREMENT DEVICE MODEL ADDED	
	(DCA 26763)	

										VAR		ITEM								G																			
REMARKS										VAR NO		ITEM NO		DESCRIPTION		EST		DRAWING NO.		FEAD		MATL CODE		UNIT WT.		QTY		UNIT		VAR		MATL SPEC		UNIT WT.		QTY		UNIT	
ADDITIONAL INFORMATION										उपकरण का प्रकार या सामान्य परिचय/जाना का नाम TYPE OF PRODUCT OR NAME OF CUSTOMER/PROJECT																		VM-12/VMN-12/NM-24											
STATUS OF DRAWING										अवतार हेतु कोने इन्सुलेशन क्लिप/टेस्ट आप BHARAT HEAVY ELECTRICALS LTD. BHOVAL																		REV. / MATL. SPEC. / SHEET / SIGN. / DATE / BY / UNIT											
DISTRIBUTION OF PRINTS										CUSTOMER - 4 SMBR-SHP-3 SMBR-TEST-1 OTHERS (COPY) - 1 SMBR-RCX - 1 SMBR-TXC - 1																		REV. / MATL. SPEC. / SHEET / SIGN. / DATE / BY / UNIT											
REV. / DATE / ALTERED / REASON / CHANGED / DATE / BY																																							

THE INFORMATION ON THIS DOCUMENT IS THE PROPERTY OF BHARAT HEAVY ELECTRICALS LIMITED. IT MUST NOT BE USED DIRECTLY OR INDIRECTLY IN ANY WAY DETRIMENTAL TO THE INTEREST OF THE COMPANY.



VAR.07



VAR.08

REMARKS	VAR NO	ITEM NO	DESCRIPTION	DRAWING NO.	IT NO	NATL CODE	UNIT WT.	STY
ADDITIONAL INFORMATION								
STATUS OF DRAWING								
DISTRIBUTION OF PRINTS								
CUSTOMER - 4								
SHEET SWP-3								
SHEET TEST-1								
SHEET SWP-1								
SHEET SWP-2								
SHEET SWP-3								
SHEET SWP-4								
SHEET SWP-5								
SHEET SWP-6								
SHEET SWP-7								
SHEET SWP-8								
SHEET SWP-9								
SHEET SWP-10								
SHEET SWP-11								
SHEET SWP-12								
SHEET SWP-13								
SHEET SWP-14								
SHEET SWP-15								
SHEET SWP-16								
SHEET SWP-17								
SHEET SWP-18								
SHEET SWP-19								
SHEET SWP-20								
SHEET SWP-21								
SHEET SWP-22								
SHEET SWP-23								
SHEET SWP-24								
SHEET SWP-25								
SHEET SWP-26								
SHEET SWP-27								
SHEET SWP-28								
SHEET SWP-29								
SHEET SWP-30								
SHEET SWP-31								
SHEET SWP-32								
SHEET SWP-33								
SHEET SWP-34								
SHEET SWP-35								
SHEET SWP-36								
SHEET SWP-37								
SHEET SWP-38								
SHEET SWP-39								
SHEET SWP-40								
SHEET SWP-41								
SHEET SWP-42								
SHEET SWP-43								
SHEET SWP-44								
SHEET SWP-45								
SHEET SWP-46								
SHEET SWP-47								
SHEET SWP-48								
SHEET SWP-49								
SHEET SWP-50								
SHEET SWP-51								
SHEET SWP-52								
SHEET SWP-53								
SHEET SWP-54								
SHEET SWP-55								
SHEET SWP-56								
SHEET SWP-57								
SHEET SWP-58								
SHEET SWP-59								
SHEET SWP-60								
SHEET SWP-61								
SHEET SWP-62								
SHEET SWP-63								
SHEET SWP-64								
SHEET SWP-65								
SHEET SWP-66								
SHEET SWP-67								
SHEET SWP-68								
SHEET SWP-69								
SHEET SWP-70								
SHEET SWP-71								
SHEET SWP-72								
SHEET SWP-73								
SHEET SWP-74								
SHEET SWP-75								
SHEET SWP-76								
SHEET SWP-77								
SHEET SWP-78								
SHEET SWP-79								
SHEET SWP-80								
SHEET SWP-81								
SHEET SWP-82								
SHEET SWP-83								
SHEET SWP-84								
SHEET SWP-85								
SHEET SWP-86								
SHEET SWP-87								
SHEET SWP-88								
SHEET SWP-89								
SHEET SWP-90								
SHEET SWP-91								
SHEET SWP-92								
SHEET SWP-93								
SHEET SWP-94								
SHEET SWP-95								
SHEET SWP-96								
SHEET SWP-97								
SHEET SWP-98								
SHEET SWP-99								
SHEET SWP-100								

1

41