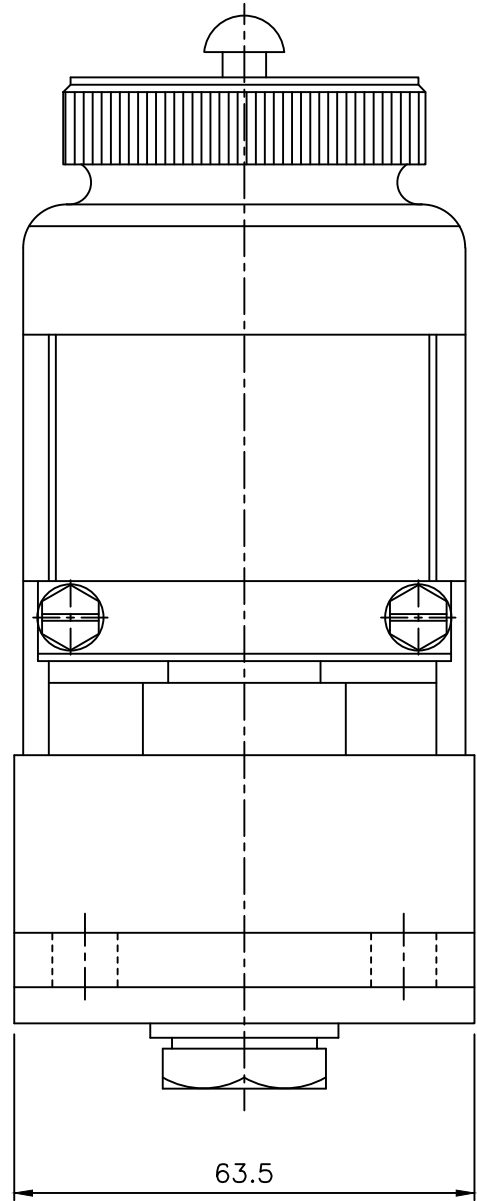




(ALL DIMENSIONS ARE IN mm.)



TOOL LIST		
ITEM	TOOL	DESCRIPTION
VAR.00	1486239	AIR GAP GAUGE TOOL
VAR.00	1486240	AIR GAP GAUGE TOOL

1. DRILL 4.8 IN VALVE PLUG IT.008 THROUGH EXISTING HOLE AT 'A' FOR VAR.00 & 01 FACE "X" AND OUT SIDE SURFACE OF IT.008 TO BE LIGHTLY SMEARED WITH ARALDITE PRIOR TO PRESSING INTO MAGNET VALVE BODY. IT.001 & IT.023.
2. USE LOCTITE WITH ITEM 22 WHILE TIGHTENING AND PRICK PUNCH AFTER TIGHTENING.
3. INVESTMENT CASTING TO DRG.NO.25880530007 CAN BE USED AS AN ALTERNATIVE.

001	--			023	MAGNET VALVE BODY		2 588 05 3 0004	002					
001	001	SEE NOTE 2		022	SCRU GRB SOC APM4x8-12.9				AA 7125110				
<del>001</del>	<del>001</del>			<del>021</del>	<del>RIVET SNAP 6x24-ST</del>				<del>AA 7174014</del>				
001	001	CUT TO 6 LG.		020	SCRU GRB SOC AP M6x12-12.9				BP 7125110967				
									BP 7125110				
002	002			019	WASHER SPG SC A5-ST				BP 7164001936				
									BP 7164001				
002	002			018	SCRU HEX. SLT M5x10-4.8				BP 7121105926				
									BP 7121105				
002	002			017	WASHER SPG SC A5-ST				BP 7164001928				
									BP 7164001				
002	002			016	SCRU HEX. SLT. PM6x16 8.8-ST				BP 7121125978				
									BP 7121125				
001	001			015	WASHER		4 588 05 3 0030	001					
001	001			014	VALVE BOLT		4 588 05 3 0004	001					
001	001			013	LOCATING PIN		4 588 05 3 0016	001					
001	001			012	OPERATING COIL		3 588 05 3 0010						
								01					
001	001			011	SPRING		3 588 05 3 0009	001					
001	001			010	RUBBERISED VALVE STEM		3 588 05 3 0031	001					
001	001			009	RUBBERSED VALVE		3 588 05 3 0033	001					
001	001			008	VALVE PLUG		3 588 05 3 0017	001					
001	001			007	ARMATURE		4 588 05 3 0009	001					
001	001			006	BUSH		4 588 05 3 0008	001					
001	001			005	CORE		3 588 05 3 0011	001					
001	001			004	ADAPTOR		3 588 05 3 0014	001					
001	001			003	MAGNET CAP		3 588 05 3 0016						
								00					
001	001			002	MAGNET VALVE CASE		3 588 05 3 0013	001					
--	001			001	MAGNET VALVE BODY		2 588 05 3 0004	001					
VAR 01	VAR 00	REMARKS	VAR NO.	ITEM NO	DESCRIPTION	STD.	DRAWING NO.	IT.ND	MATL.CODE	QTY	UNIT	UNIT WT.	ZONE
								VAR	MATL SPECN.			QTY.	

ADDITIONAL INFORMATION				उत्पाद का प्रकार या ग्राहक/परियोजना का नाम				INDIAN RAILWAYS															
STATUS OF DRAWING				TYPE OF PRODUCT OR NAME OF CUSTOMER/PROJECT																			
DISTRIBUTION OF PRINTS				<div><div><div>बी.एच.ई.एल.</div><div></div><div>भारत हेवी इलेक्ट्रिकल्स लिमिटेड</div><div>भोपाल</div></div><div>BHARAT HEAVY ELECTRICALS LTD. BHOPAL</div></div>				वनया DRN.		नाम/प.म.		हस्ता/सिग्न.		दि./DATE		वरि की नं. OF.							
OFFICE COPY - 1						जुआन CND.		सी.के.ए.		हस्ता-		10.9.12.82		01									
TCK (SWM) - 1						किसीपरिचय APPD.		वी.पी.सी.		हस्ता-		12.12.82		01									
REV		DATE		ALTERED		किस उद्देश्य के		हस्ता-सिग्न.		डिजाइन		उत्पाद नाम की श्रेणी		सूचक		भार की वजन (K.G.)		मद संख्या		मद नं.			
08		10.09.97		CHECKED		ए.एस.ए.		हस्ता-सिग्न.		DEPT. CEE		उत्पाद नाम की श्रेणी		SCALE		WEIGHT (K.G.)		मद संख्या		मद नं.			
				APPROVED		आर.के.ए.		हस्ता-सिग्न.		कोड: 407		REF CG 06503				1:1		G/1 588 00 3 0001 G/1 588 00 3 0003		ड्राफ्ट नं. /DRAWING NO. 1 588 05 3 0003		ड्राफ्ट/REV. 01	
NEW ORIGINAL MADE, NOTE 2 MODIFIED.				शीर्षक /TITLE				DETAIL ASSEMBLY OF MAGNET VALVE TYPE M23 MV8E1															
E938																							

ALL DIMENSIONS ARE IN mm

8



28 → CARD TYPE-2

G302

A2