

ICF/VNR-5-4-202

②	01/2008	▽ ROUGH MACHINED	① ROUGH CLEANING	ALTERATIONS
		▽▽ FINISH MACHINED	⑧ CHAMFERED	
		▽▽▽ FINE FINISH MACHINED		
SSE/D	AME			

⑥ 6/96
ITEM-4 ADDED

-sd- -sd-
19/6/96 19/6/96
ASD SME/DSS

⑦ 03/02
ITEM-5 ADDED.

-sd- -sd-
4/3/02 4/3/02
SSE/D SME/DSD

⑧ 05/2011
FOR ITEMS-1 TO 5 REMARKS
REVISED.
Sd/- Sd/-
SSE/D SME/DSS

⑨ 08/12
ITEM-6 ADDED.

Sd/- Sd/-
SSE/D SME/DSS

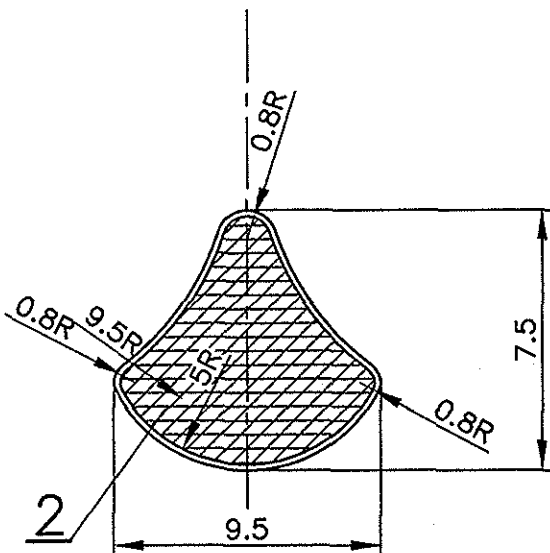
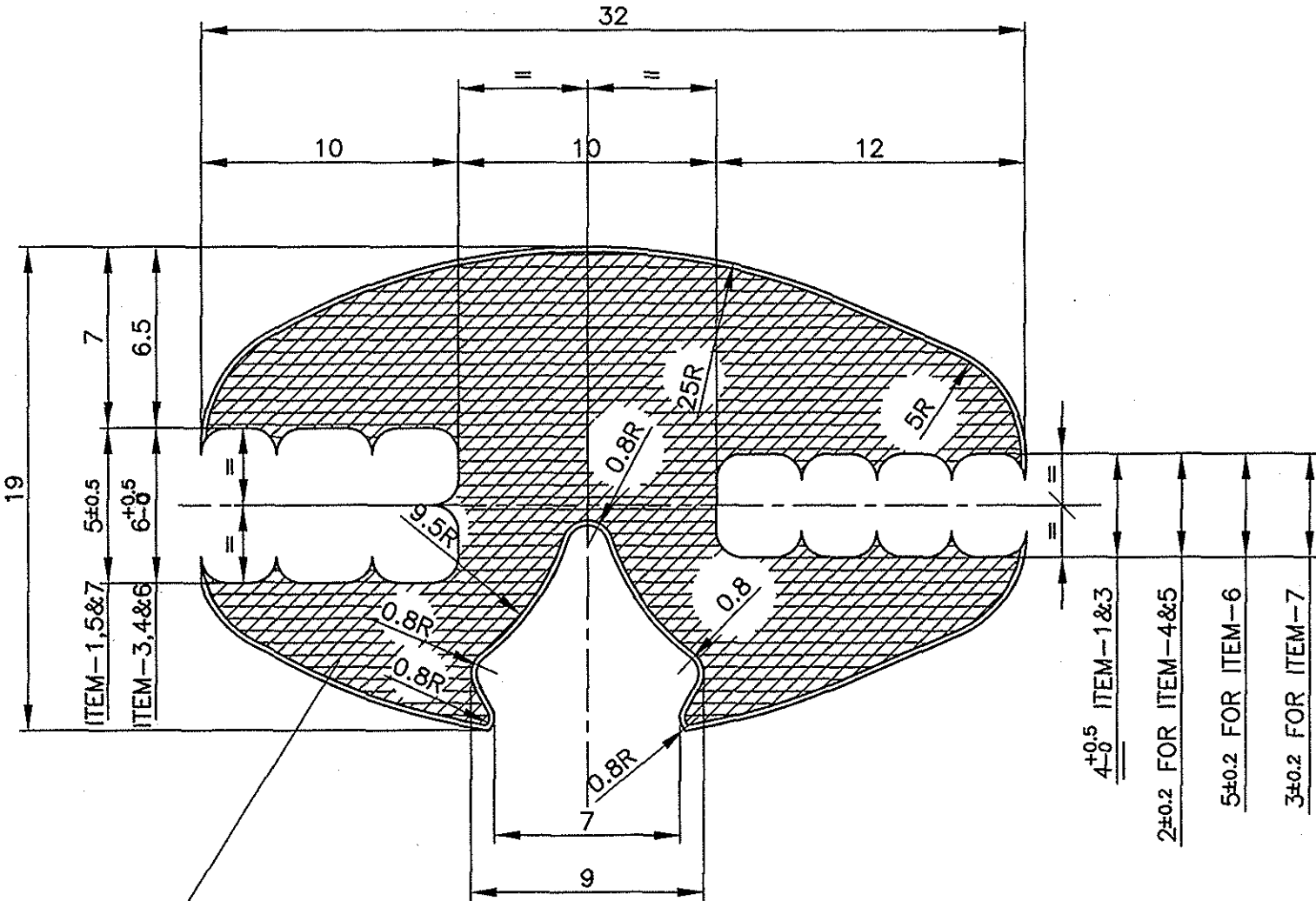
⑩ 06/2013
FOR ITEM-6 WINDOW
FIXING DIMENSION ALTD
FROM 5mm TO 6mm.
Sd/- Sd/-
SSE/D SME/DSS

⑪ 02/2015
ITEM-7 ADDED.

Sd/- Sd/-
SSE/D SME/DSS


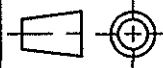
⑫ 7/16
MAT. SPEC. REVISED.

SSE/D SME/DSS







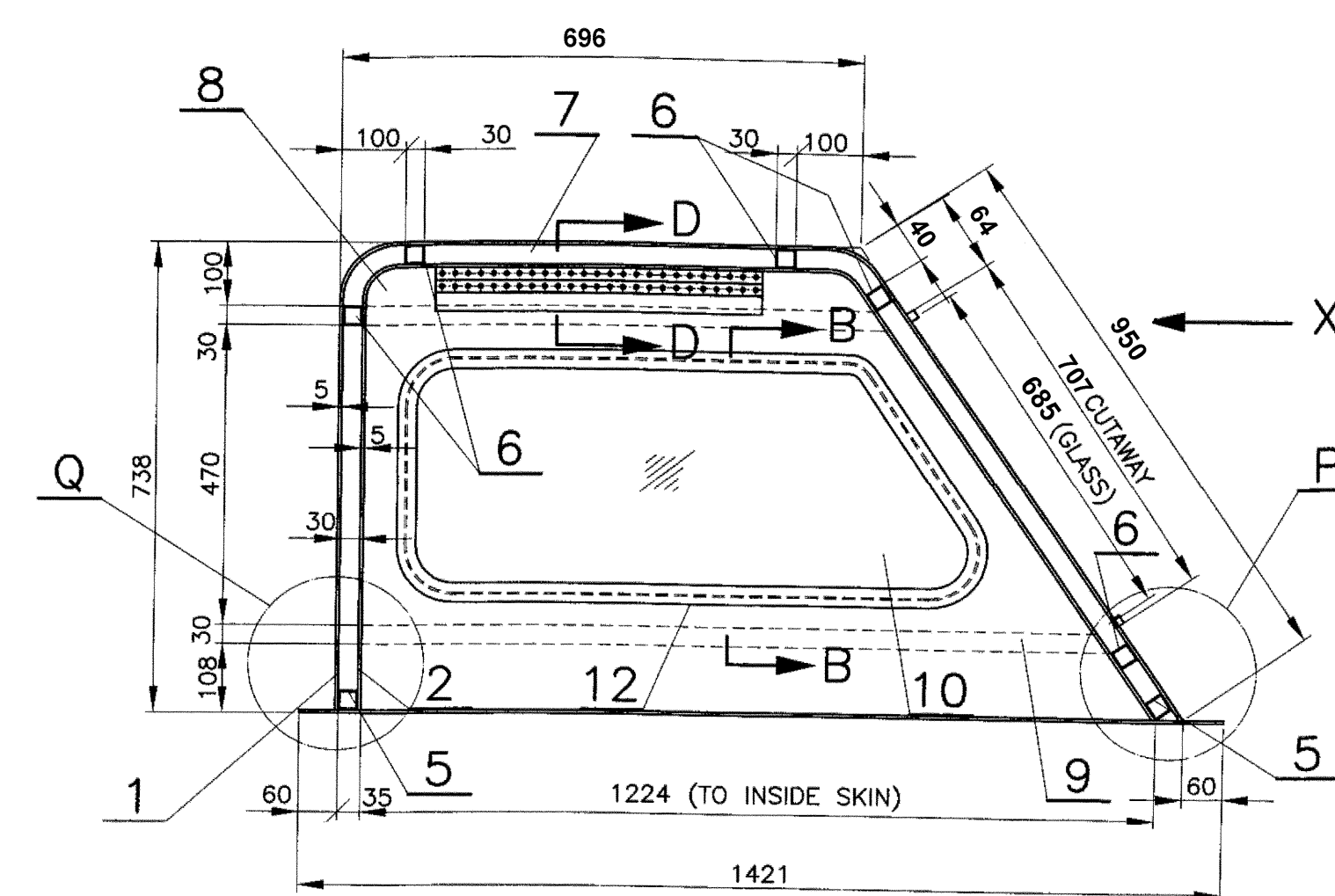
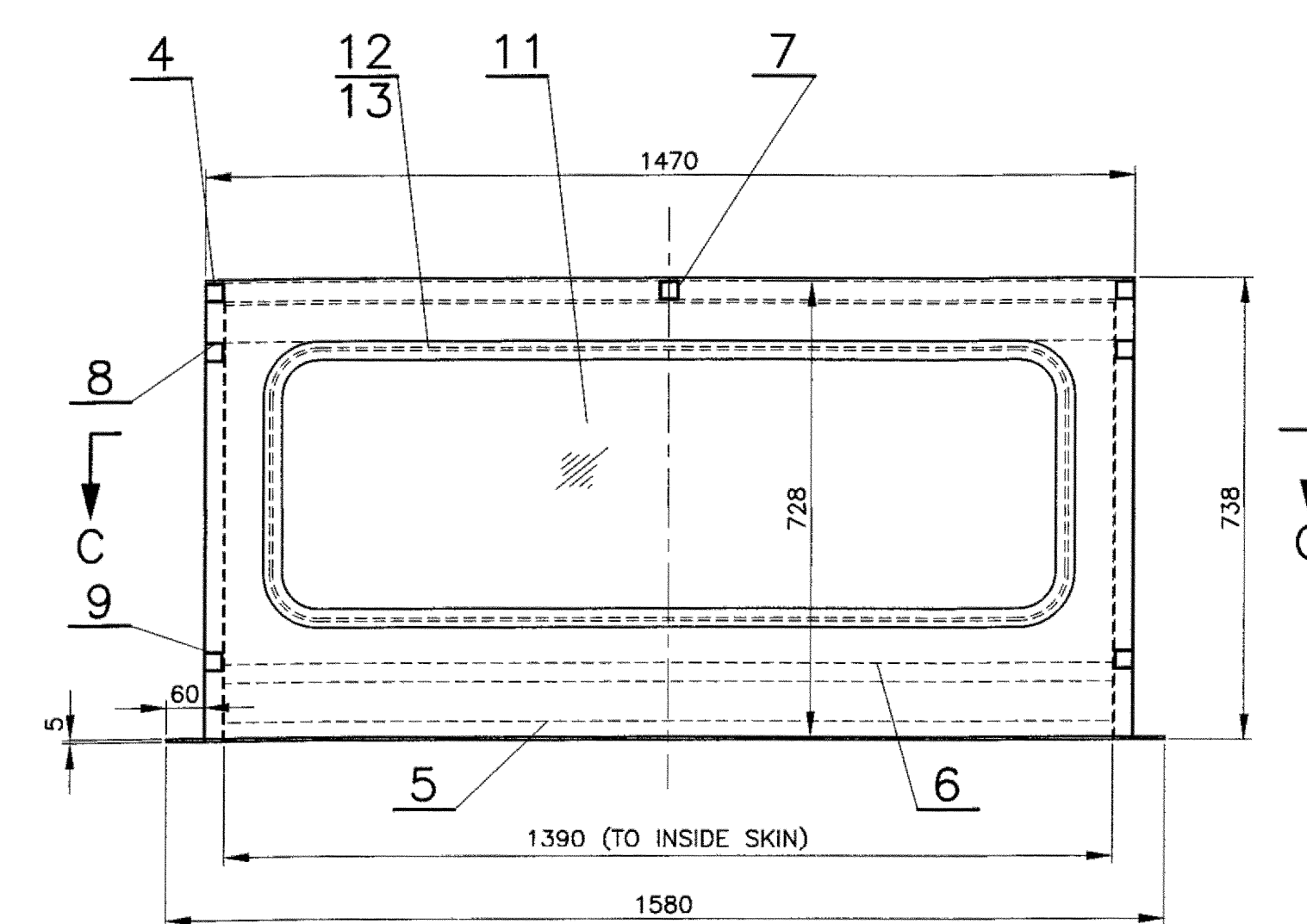
7,6,5,4,3,1

- ⑥ THE RUBBER PROFILE FOR WINDOWS SHALL CONFIRM TO ICF/MD/SPEC-104 SHORE HARDNESS-45±3
- # THE RUBBER PROFILE FOR WINDOWS SHALL CONFIRM TO ICF/MD/SPEC-104 SHORE HARDNESS-60±3

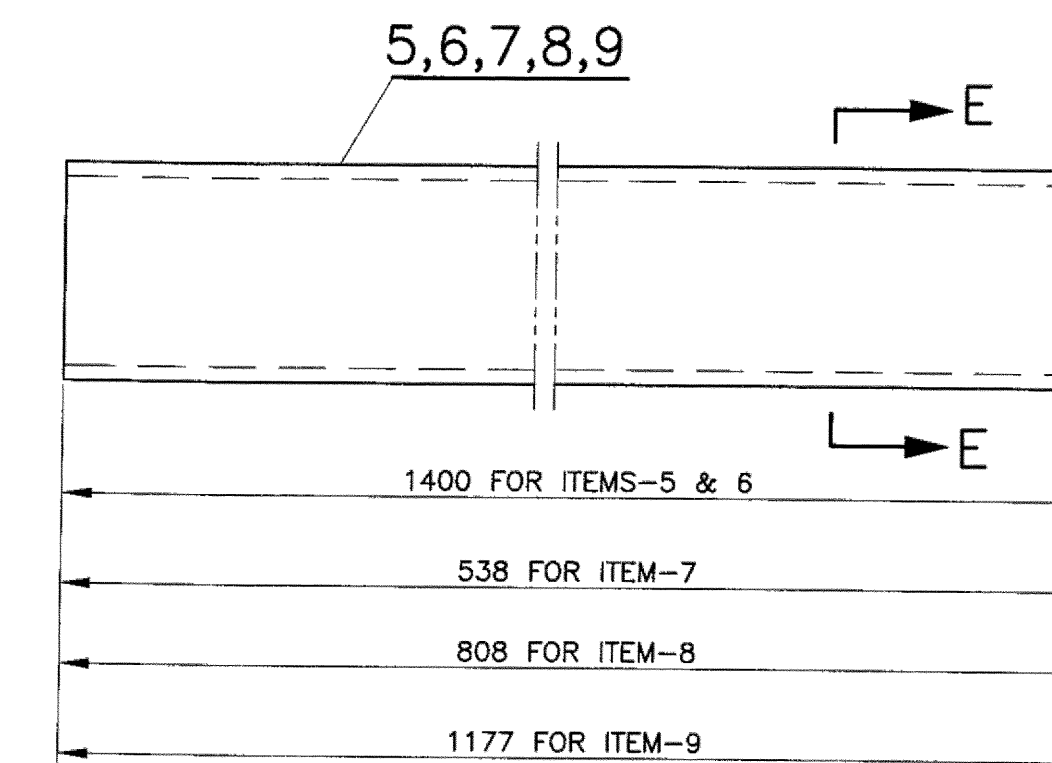
-	FIXING RUBBER	7				#
-	FIXING RUBBER	6				#
-	FIXING RUBBER	5				#
-	FIXING RUBBER	4				#
-	FIXING RUBBER	3				#
-	SEALING RUBBER	2				⊙
-	FIXING RUBBER	1				#
QTY	DESCRIPTION & DIMENSION	ITEM	REF.DRGS	MAT.SPEC	WEIGHT/UNIT	REMARKS
2	1	GROUP: 5-4			SUPERSEDED BY: SUPERSEDES:ICF/VNR-5-4-202 ALT.g/-	
		FIXING RUBBER PROFILE			SCALE 1:4	SSE/D 
					CHD	
					ALTD	S.JAYACHANDRAN
					DRN	
					Alpha Alt:- h	
	DATA CODE NO.	INDIAN RAILWAY STANDARDS				INTEGRAL COACH FACTORY CHENNAI-38
	109				SHEET 1 OF 1	ICF/VNR-5-4-202

PLW/DETC-9-0-006

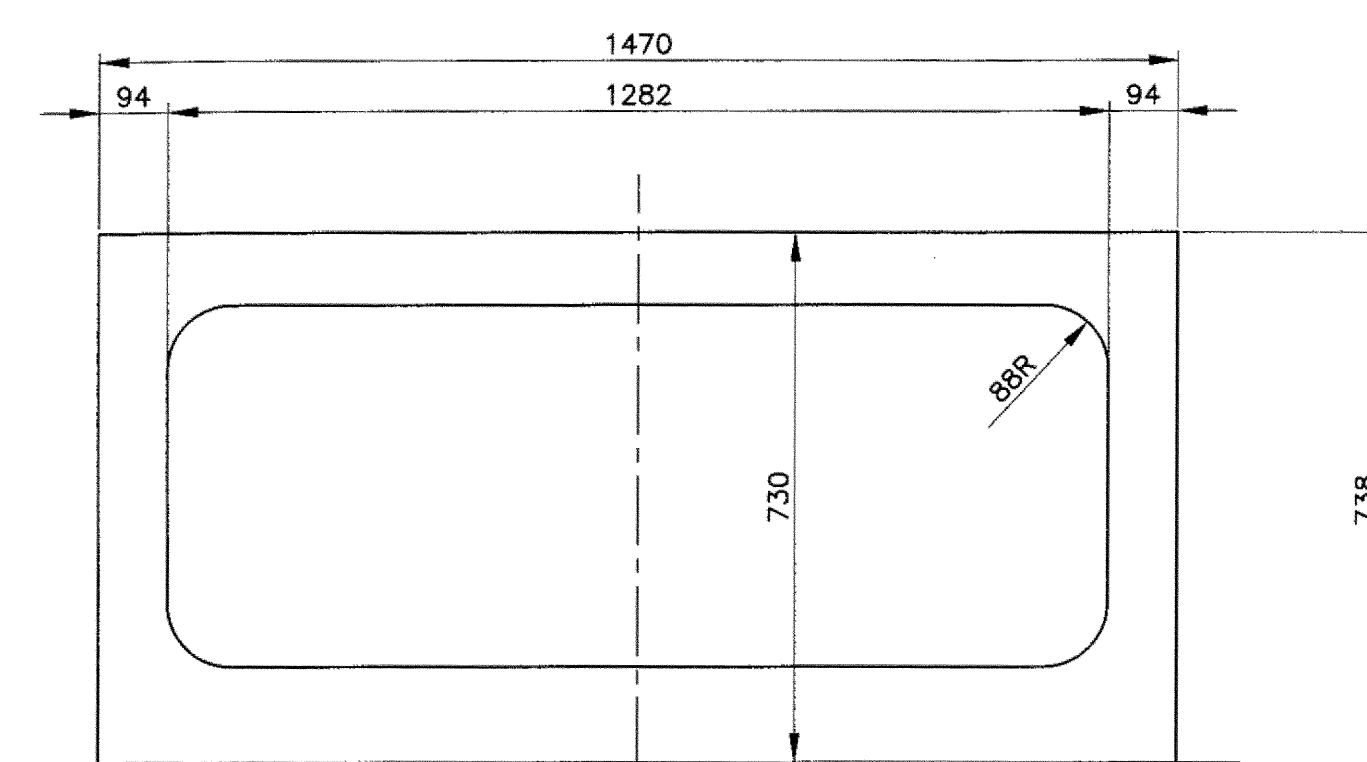
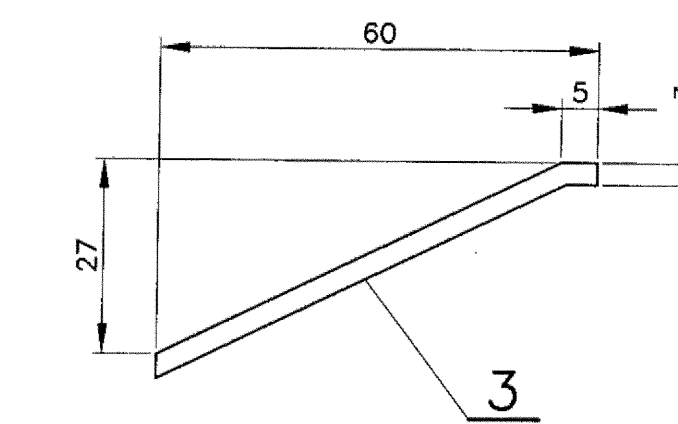
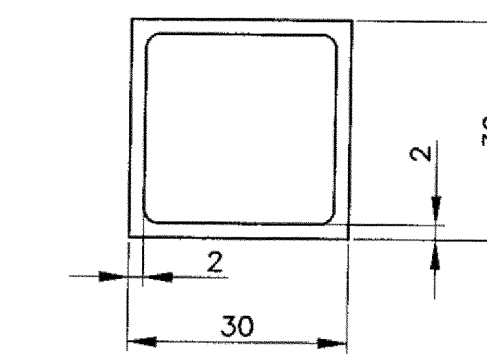
ALT. NO.	ALTERATION	CHD. SSE/D	VALIDATED WM/D	DATE
Z	DRAWING REVISED FOR HIGH RISE PANTOGRAPH.			08/03/22
Y	DIM. 556 WAS 518 (PCEE'S APPROVAL ON DATED-21/01/2023).			27/01/23



SECTION-AA

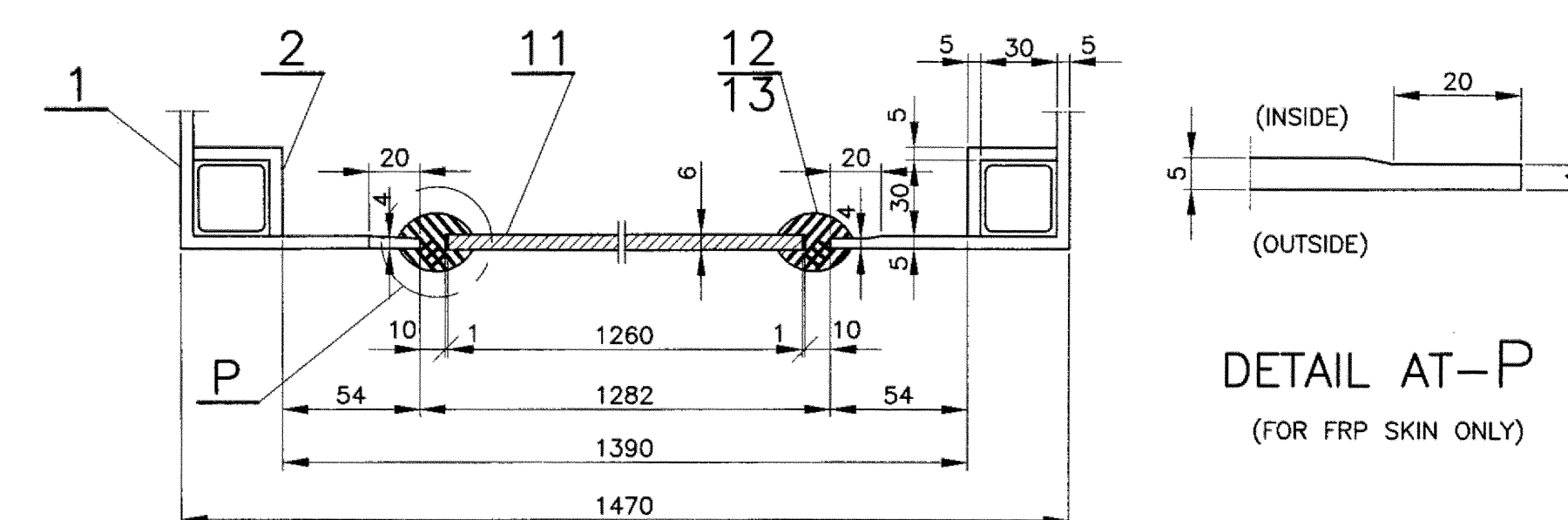
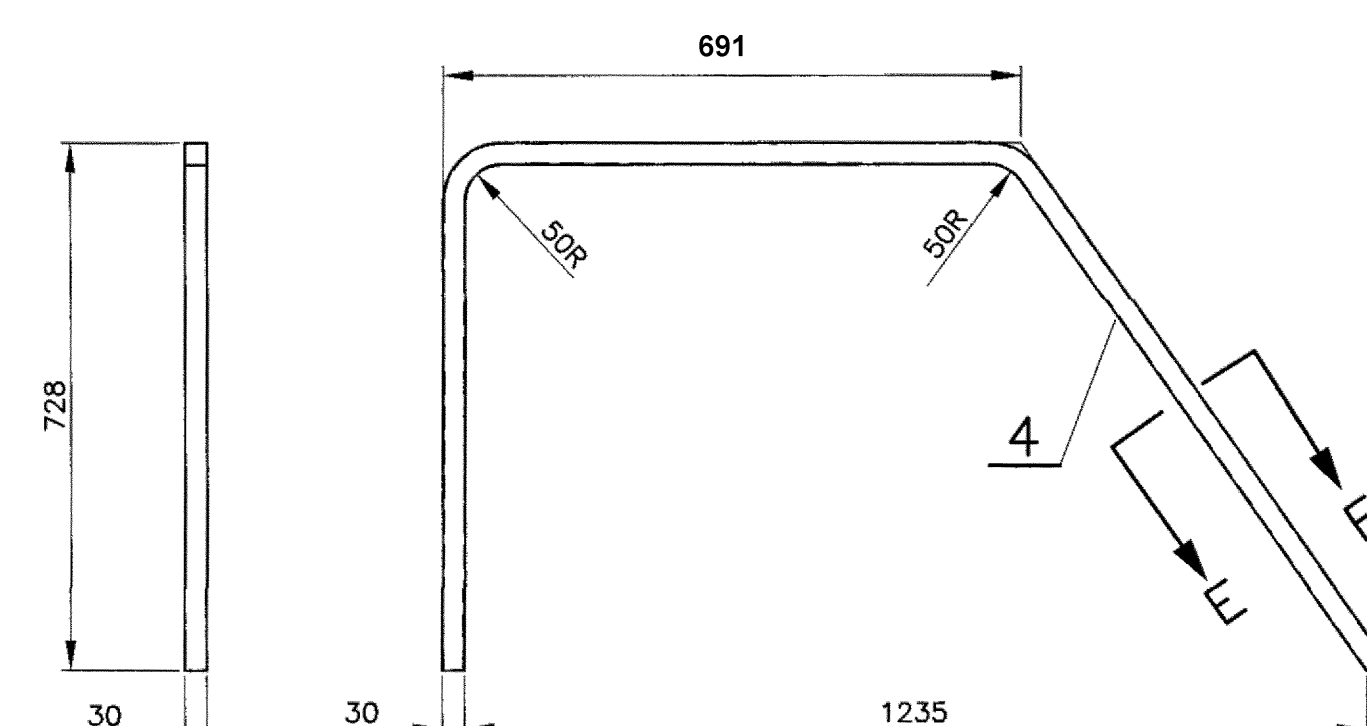


SECTION-EE

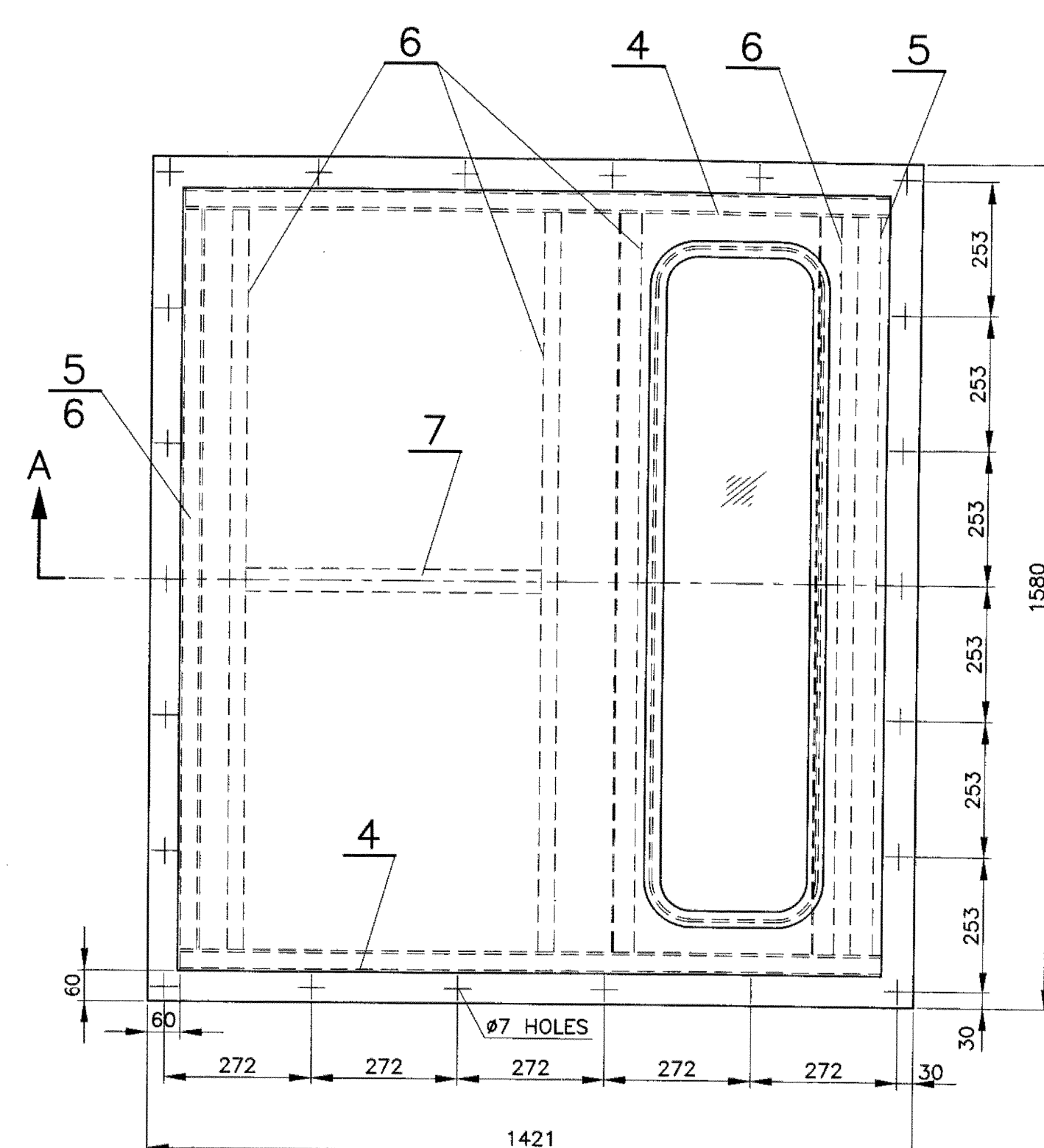


CUTOUT DETAILS IN SKIN

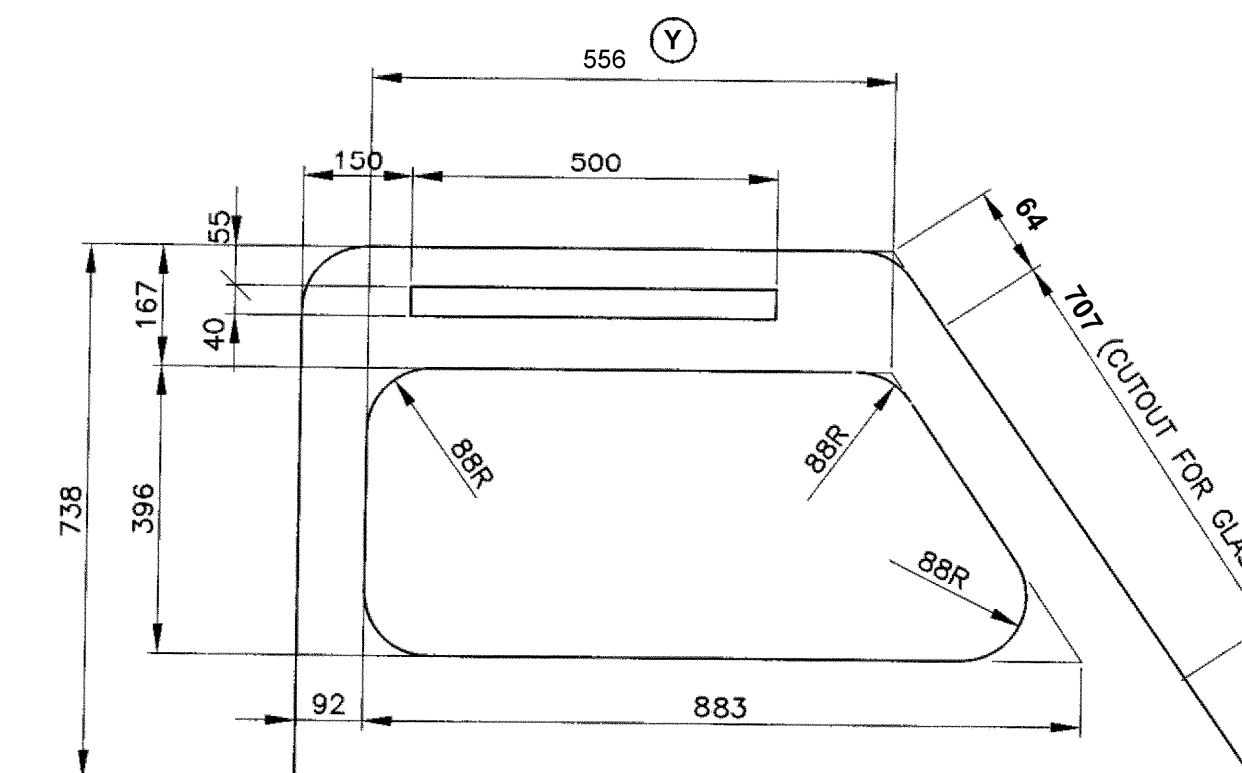
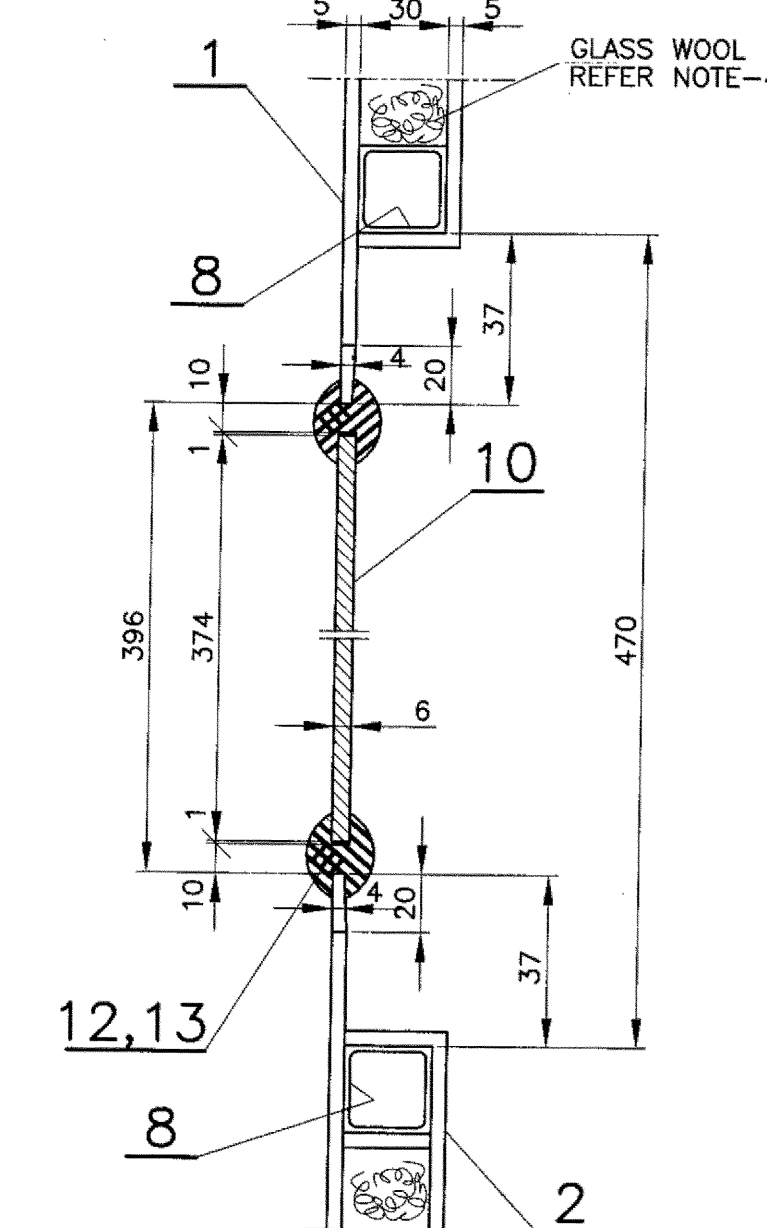
VIEW FROM-X



DETAIL AT-P
(FOR FRP SKIN ONLY)

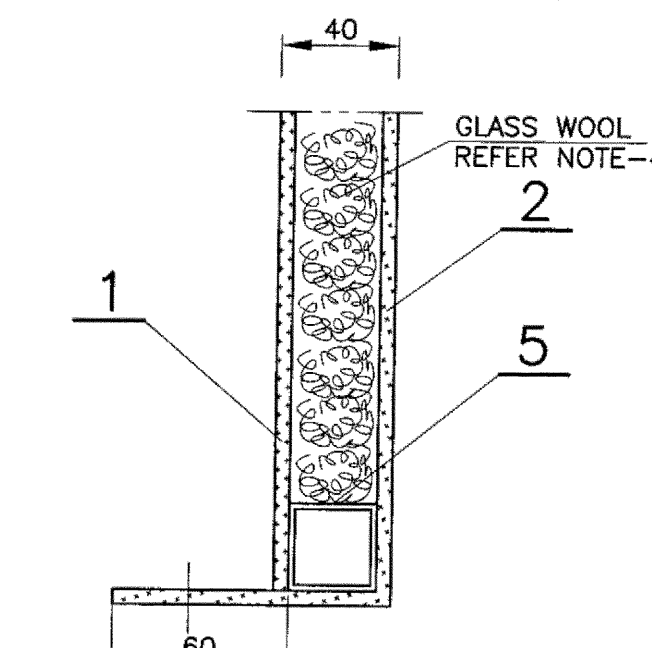


SECTION-BB

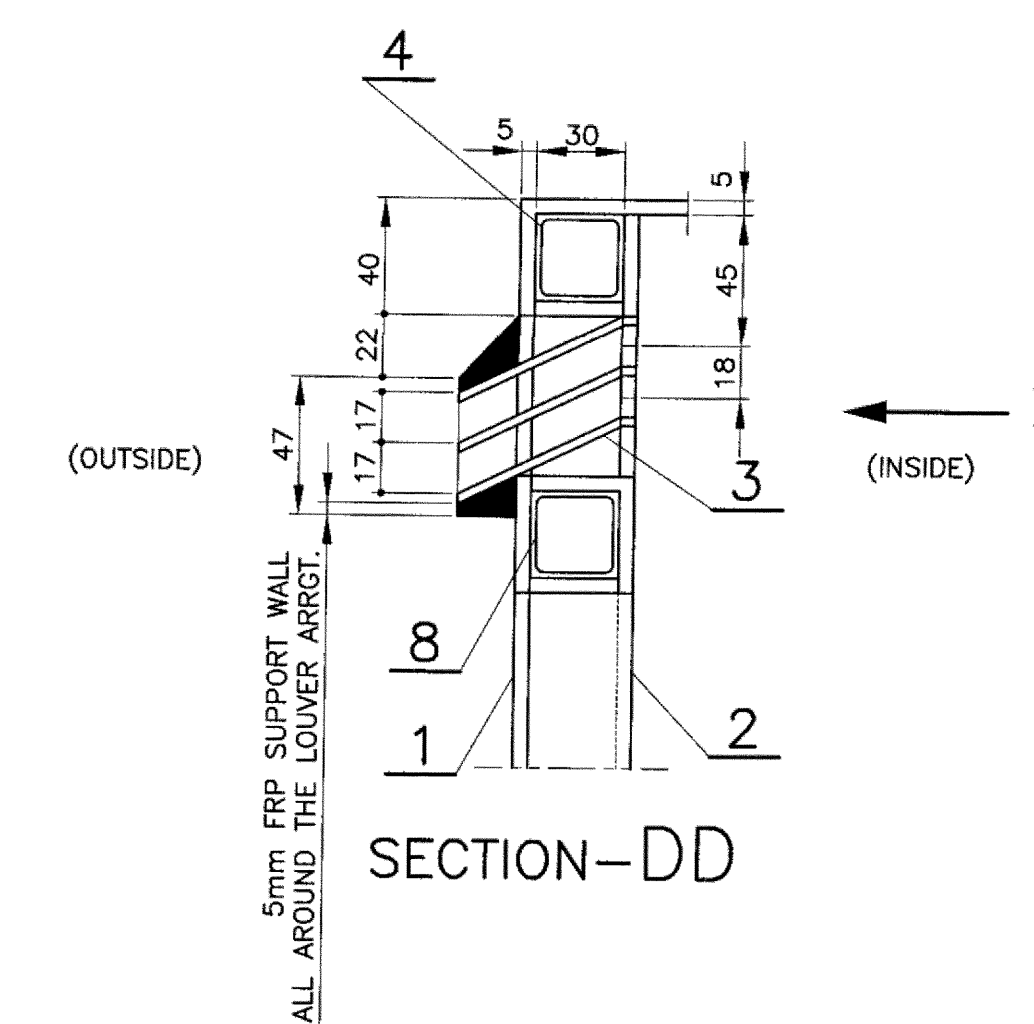


CUTOUT DETAILS IN SKIN

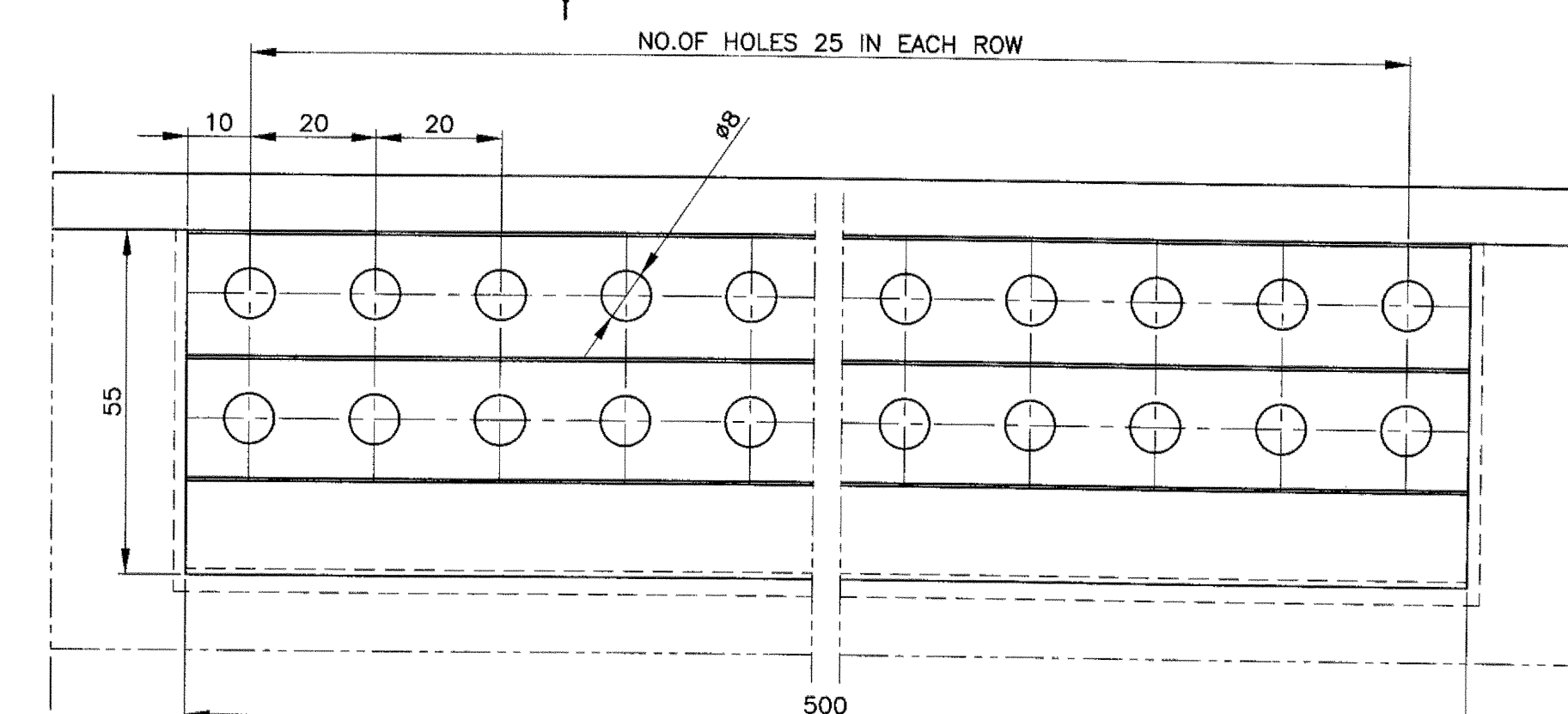
VIEW FROM-Y



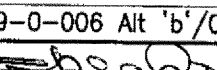

DETAIL-Q



SECTION-DD



VIEW FROM-Z

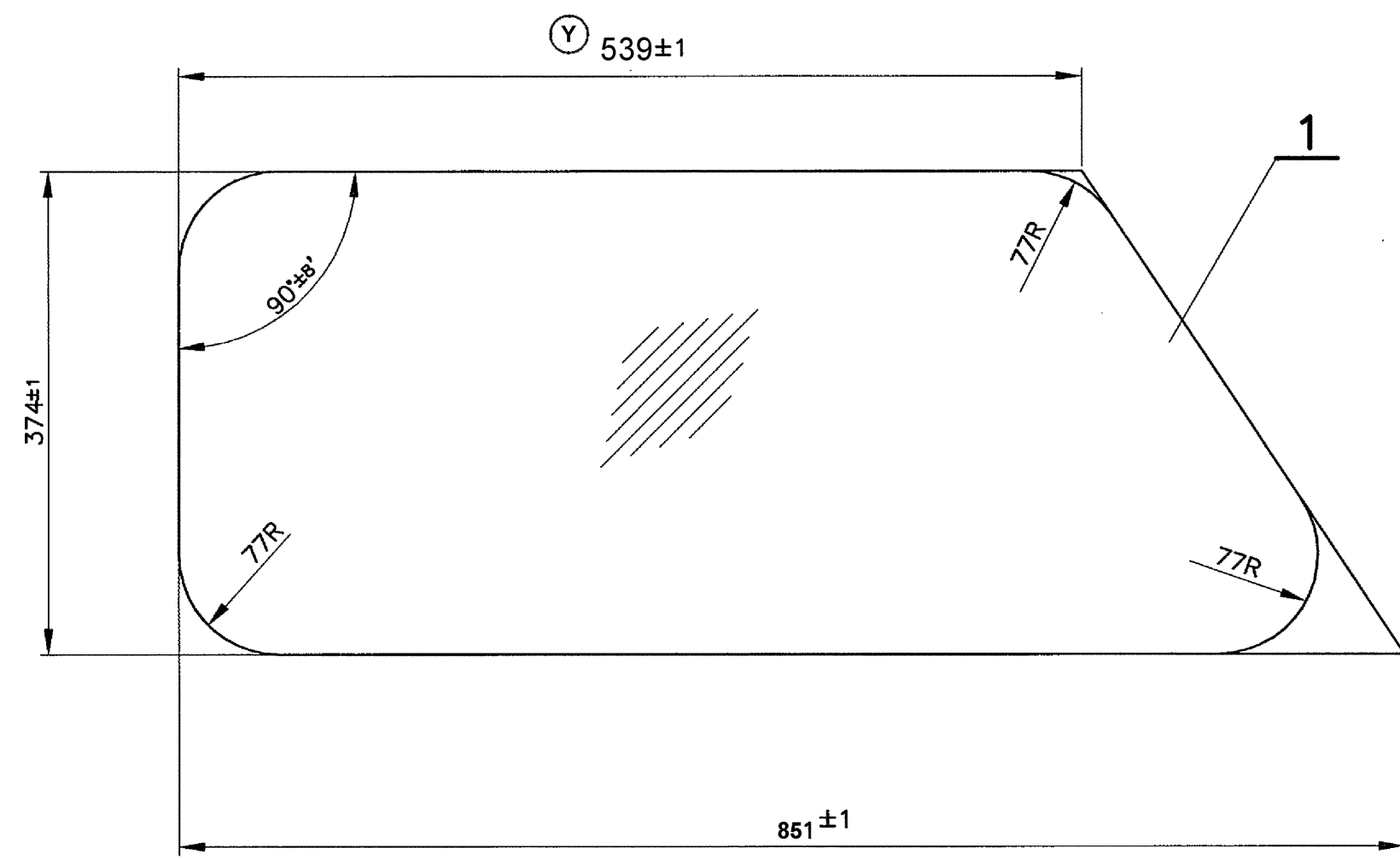
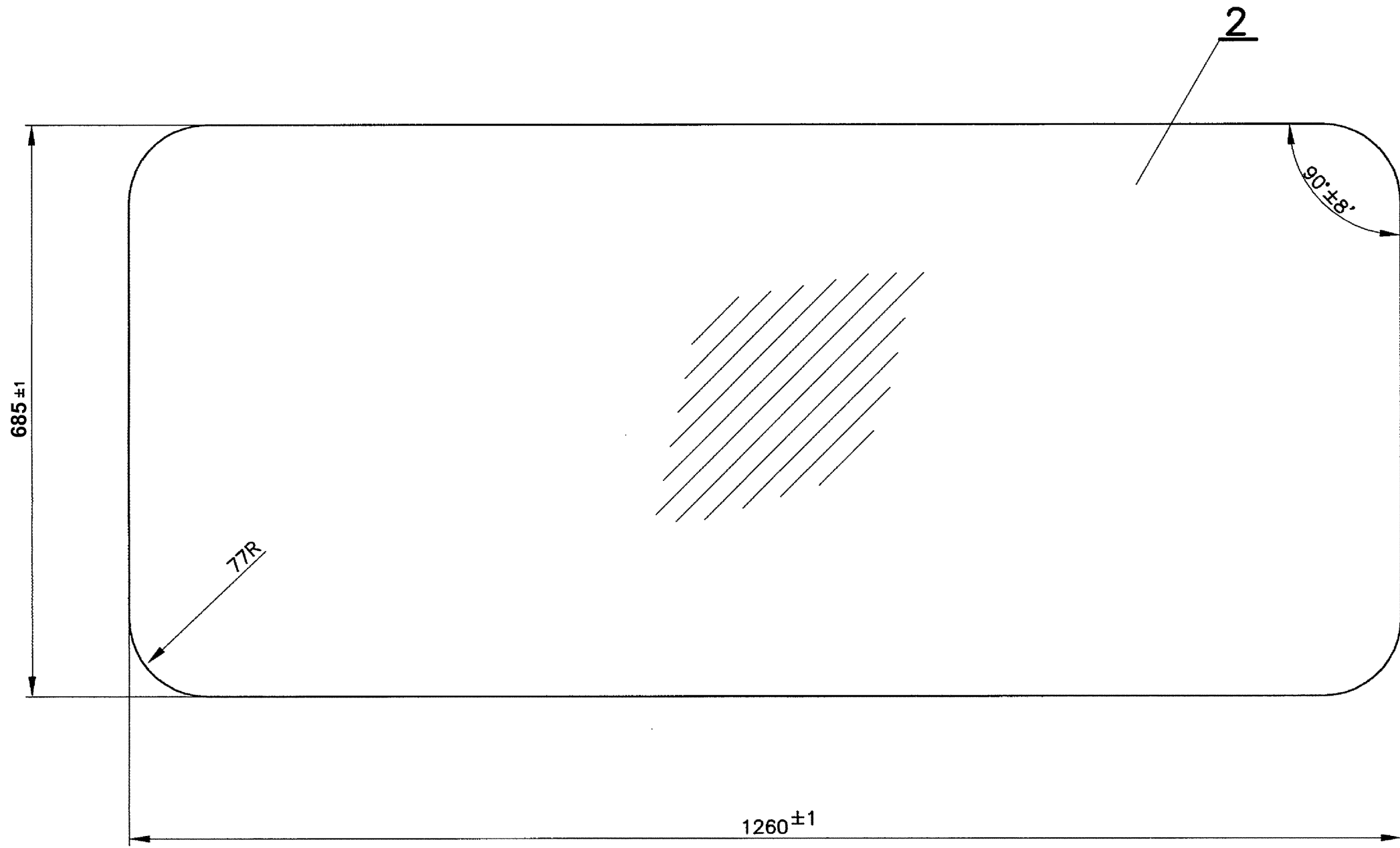
1	SEALING RUBBER L= 8635	13	ICF/VNR 5-4-202			ITEM-2
1	FIXING RUBBER L= 8635	11	ICF/VNR 5-4-202			ITEM-3
1	LAMINATED SAFETY GLASS	12	PLW/DETC 5-4-202			ITEM-2
2	LAMINATED SAFETY GLASS	10	PLW/DETC 5-4-202			ITEM-1
2	SQUARE TUBE L=1177	9		MOTS-133		*
2	SQUARE TUBE L=808	8		MOTS-133		*
1	SQUARE TUBE L=538	7		MOTS-133		*
5	SQUARE TUBE L=1400	6		MOTS-133		*
2	SQUARE TUBE L=1400	5		MOTS-133		*
2	SQUARE TUBE	4		MOTS-133		*
6	LOUVER 3x66x500	3		MOTS-133		*
1	INNER SKIN	2		MOTS-133		*
1	OUTER SKIN	1		MOTS-133		*
QTY	DESCRIPTION & DIMENSION	ITEM	REF.DRGS	MAT.SPEC	WEIGHT/UNIT	REMARKS
2	GROUP-9-0					
PER ASSY.	FRP OBSERVATION DOME ARRGT FOR DETC COACH FOR ONLY HIGH REACH PANTOGRAPH					SUPERSEDED BY: SUPERSEDES:DETC-9-0-006 Alt 'B' /02 SCALE SS/ D  1:20 CHD 1:10 ALTD N.Karthikeyan 1:1 DRN S.PRABHAKARAN Alpha Att:-Y
	DATA CODE NO.	INDIAN RAILWAY STANDARDS		SHEET	 INTEGRAL COACH FACTORY CHENNAI-38	
	180			1 OF 1	PLW/DETC-9-0-006	

FORM:-IR.A1A-1050X600

BASED ON ICF DRAWING NO-DETC-5-4-002 & PCEE'S APPROVAL E-OFFICE COMPUER NO-95201 DATE- 21/01/2023.

PLW/DETC-5-4-002

▽ ROUGH MACHINED	① ROUGH CLEANING	NO.	ALTERATION	CHD. SSE/D	VALIDATED WM/D	DATE
▽▽ FINISH MACHINED		Z	DRAWING REVISED.	<i>Aditya</i>	<i>Aditya</i>	08/03/22
▽▽▽ FINE FINISH MACHINED		Y	DIM 539 WAS 501 (PCEE'S APPROVAL ON DATED-21/01/2023).	<i>Aditya</i>	<i>Aditya</i>	27/01/23



TENTATIVE DRAWING.

				1	LAMINATED SAFTY GLASS	6X685X1260	2	IS:2553-90 PART-I	IS:2835-87 TYPE-AA QLTY.		TRANSPARENT.	
				2	LAMINATED SAFTY GLASS	6X374X800	1	IS:2553-90 PART-I	IS:2835-87 TYPE-AA QLTY.		TRANSPARENT.	
NO. OFF				DESCRIPTION & DIMENSIONS				ITEM	REF.DRGS	MAT. SPEC.	WEIGHT/UNIT	REMARKS
IV	III	II	I	GROUP: BODY SIDE WINDOW COMPLETE							SUPERSEDED BY:	
			PER COACH	<div>OBSERVATION GLASS</div> <div>FOR HIGH REACH PANTO.</div>							SUPERSEDES: DETC-5-4-002 ALT. -/-	
											SCALE	SSE/D
											1:10	CHD
											1:20	ALT

DETC-9-0-006	ASSEMBLY DRAWINGS	01/2008	1-6-95	AME
2	ALT.	DATE OF LATEST ALTN	DATE OF FIRST ISSUE	AME