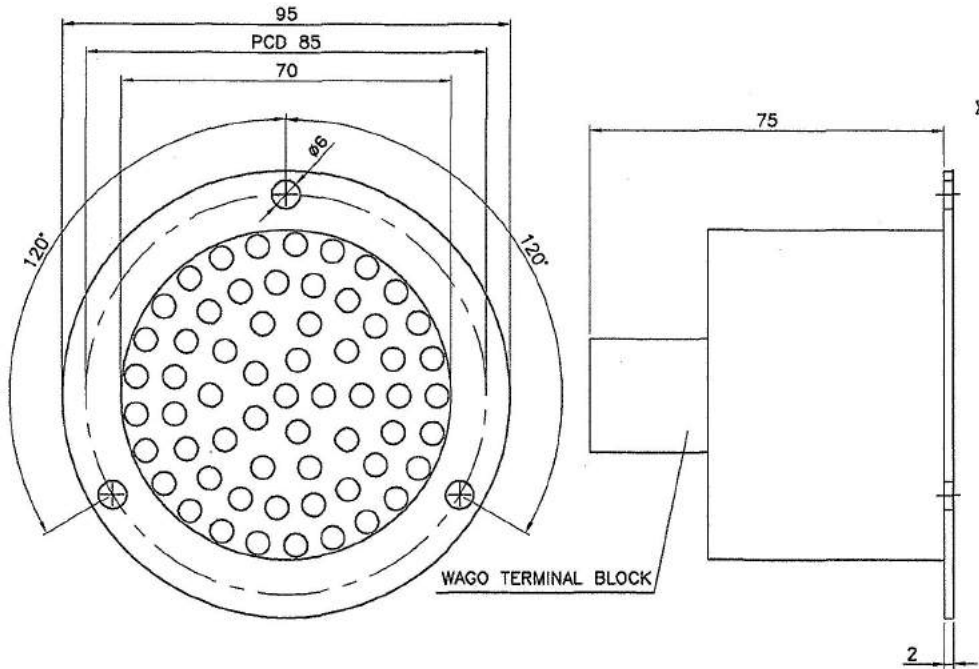


ICF / SK₃-7-6-023

LED CLUSTER LIGHT - 7W



☆ TECHNICAL SPECIFICATION

- 1) I/P VOLTAGE RANGE : 110V DC (SUITABLE FOR 90V-140V DC)
- 2) LED FORWARD VOLTAGE : 3.3V TYP. AT 20mA
- 3) COMPONENT RATING : HIGH VOLTAGE RATED 630V INDUSTRIAL GRADE
- 4) LIGHT OUTPUT : 25 LUX AT 2 METER DISTANCE
- 5) NO. OF LED'S : 60 LED'S / LAMP
- 6) LUMINOUS INTENSITY : 6000 mcd / LED AT 20mA
- 7) HOUSING MATERIAL : ALUMINIUM HOUSING (PROVIDES GOOD HEAT SINK)
- 8) LED TYPE : 5.0mm
- 9) LENSE : WATER CLEAR
- 10) COLOUR : RED / AMBER
- 11) LED BEAM ANGLE : 120 DEGREE

-	-	-	1	LED CLUSTER LIGHT-AMBER (7W)	2				☆ SEE TECH.SPEC.					
-	-	-	1	LED CLUSTER LIGHT-RED (7W)	1				☆ SEE TECH.SPEC.					
NO. OFF				DESCRIPTION & DIMENSIONS	ITEM	REF.DRGS.	MAT. SPEC.	WEIGHT/UNIT	REMARKS					
IV	III	II	I	GROUP:- 7-5						SUPERSEDED BY:				
				LED CLUSTER LIGHT						SUPERSEDES:				
										SCALE	SSE/D	J.Dominic Vincent		
										1:1	CHD			
											ALT.			
											DRN	J.DOMINIC VINCENT		
				ALT.										
CAD FILE: ED-CAD\329 7-6 023---00.DWG														
DATA CODE No.		INDIAN RAILWAY STANDARDS				SHEET		INTEGRAL COACH FACTORY CHENNAI-38						
329						1 OF 1		ICF / SK ₃ -7-6-023						