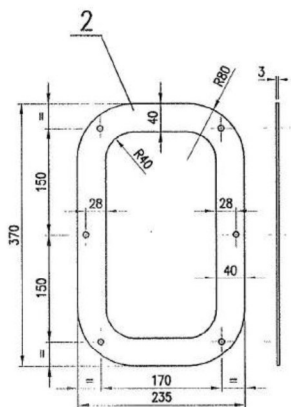
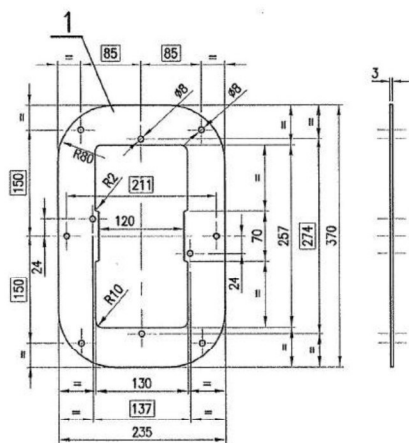


1240631/2023/HEP-CEE40700

DMU/DPC3/SS-9-0-309

ALTERATIONS



NOTE

1. THE ADAPTER PLATE SHALL BE PAINTED WITH MINIMUM THICKNESS OF 50 MICRONS TO COLOUR PEARL LIGHT GREY OF RAL 9022 AS PER COLOUR SCHEME TO DRG.NO. DMU/DPC13-8-3-301
2. THE FRAMED DIMENSIONS SHALL BE STRICTLY FOLLOWED.

* NO. OF ASSY. REQD. PER COACH.

COLS	1	
COACH		
DEMU/DPC	2	

DMU/DPC3/SS-9-0-305	
ASSEMBLY DRAWINGS	
04-09-2014	<i>[Signature]</i> 04/09/14
DATE OF FIRST ISSUE	DY.CEE/D

1	EPDM GASKET (THICKNESS=3mm)	2		MTDS-048(LATEST)		
1	ADAPTER PLATE 3x235x370	1		SS 304		
NO.OFF	DESCRIPTION & DIMENSIONS	ITEM	REF. DRGS.	MAT.& SPEC	WEIGHT/UNIT	REMARKS
II	GROUP : 9-0				SUPERSEDED BY:	
PER ASSY.	ADAPTER PLATE (FOR LED MARKER CUM TAIL LIGHT)				SUPERSEDES:	
					SCALE	SSE/D 
					1:5	CHD
						ALT
						DRN
						A.T.SURENDRAMOHAN
					ALT	
CAD FILE : \ED-CAD\629 9-0 309--00.DWG						
* DATA CODE NO	INDIAN RAILWAY STANDARDS			SHEET	INTEGRAL COACH FACTORY CHENNAI-30.	
629				1 OF 1	DMU/DPC3/SS-9-0-309	