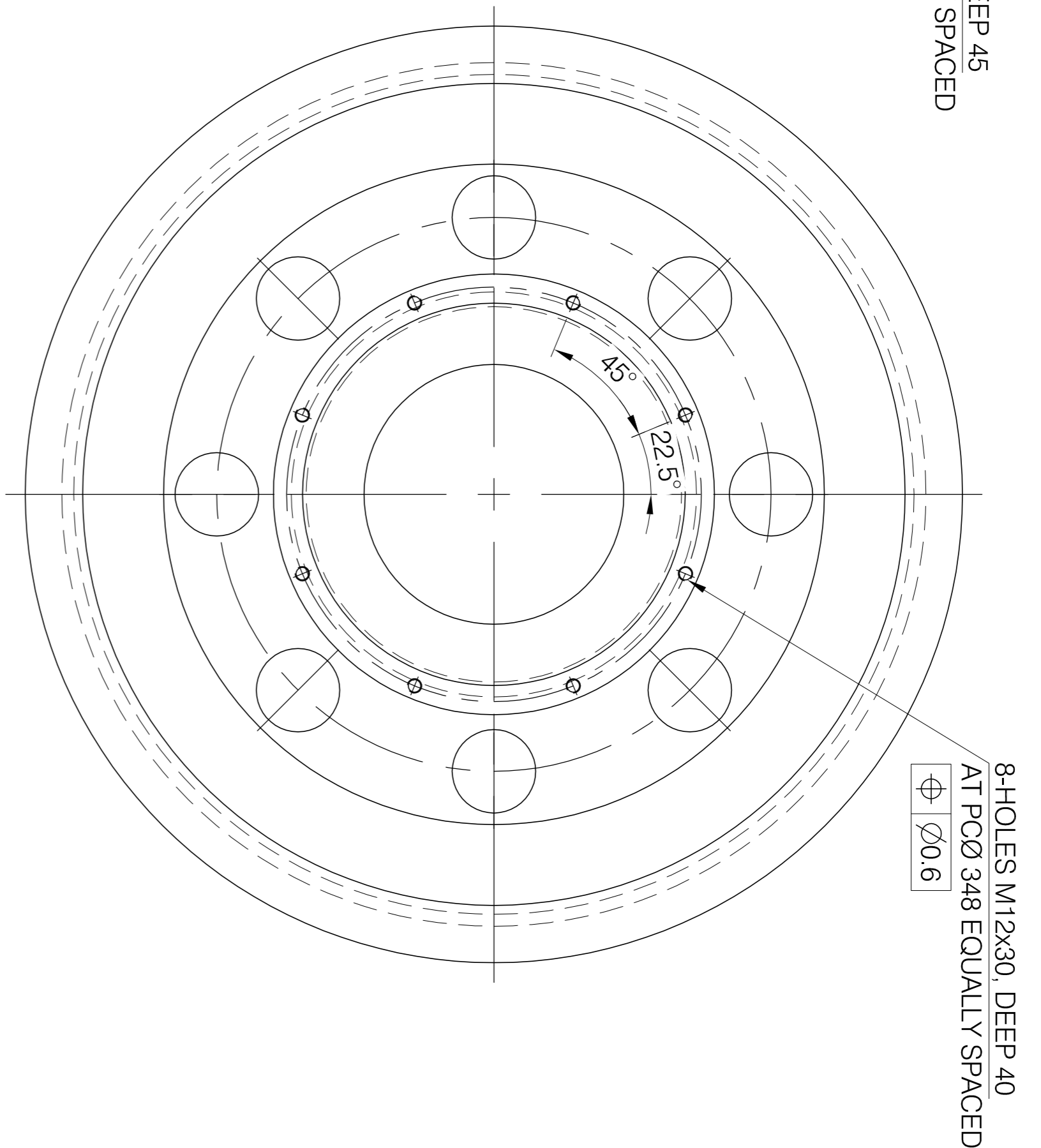
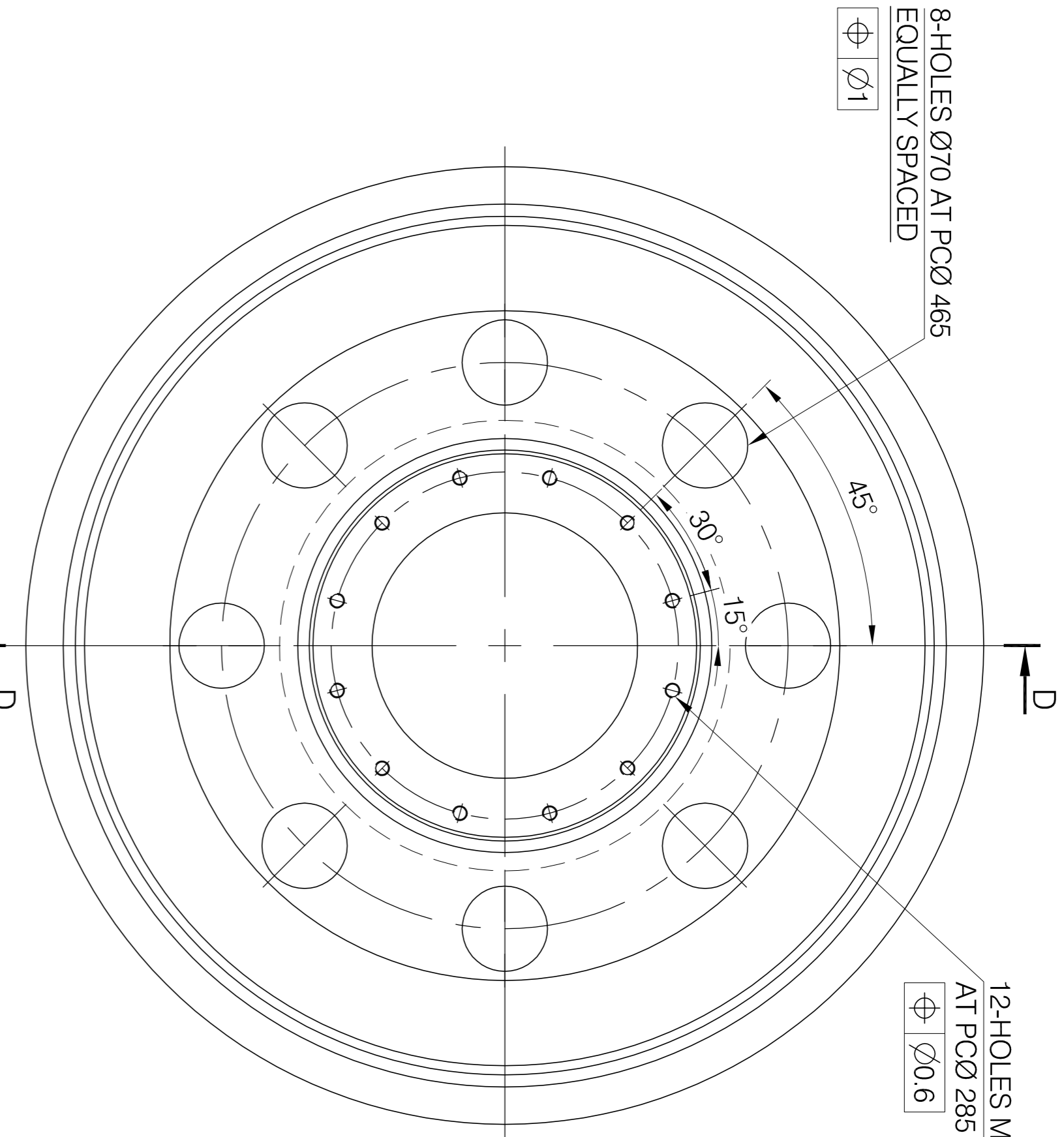
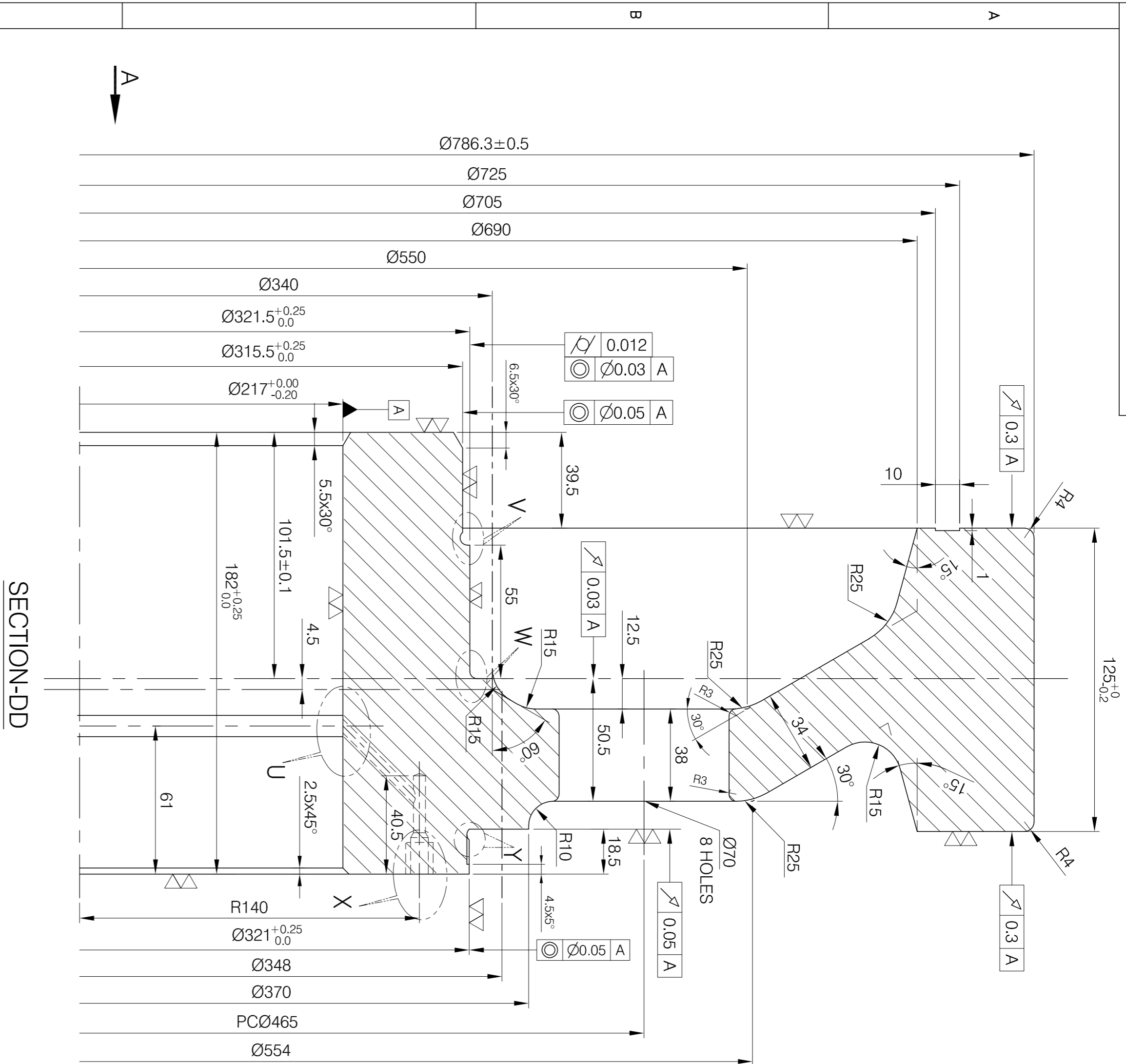
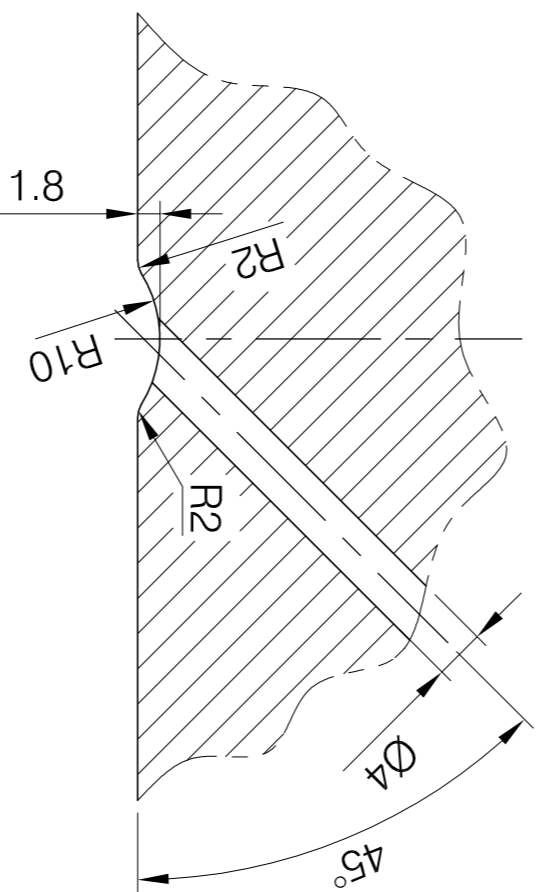


150 19 91 544 2 ON GRD

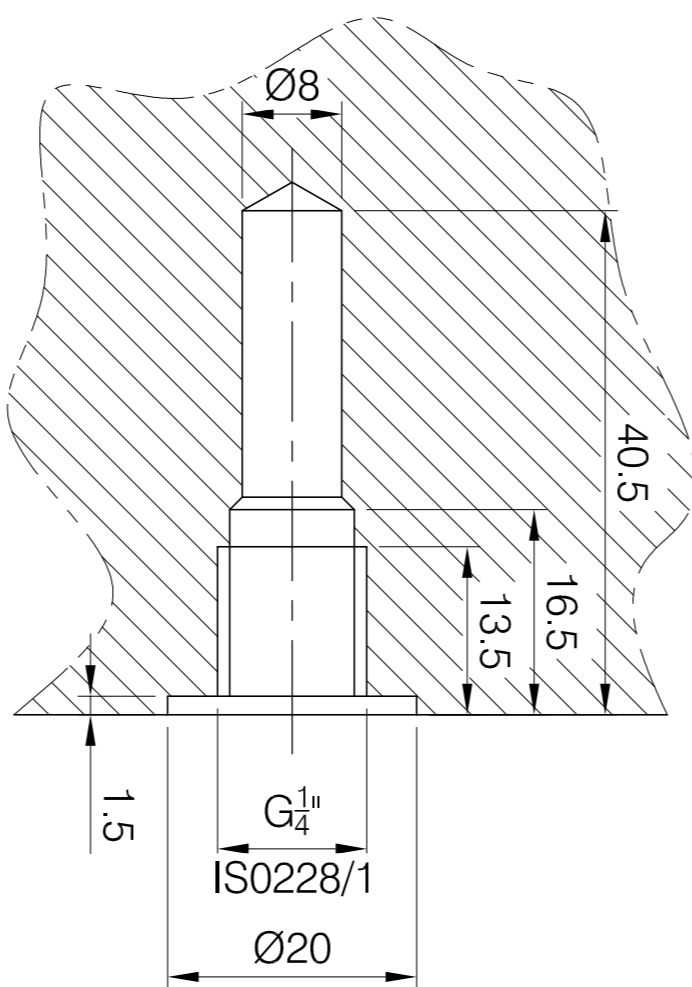


VIEW OF ARROW-A

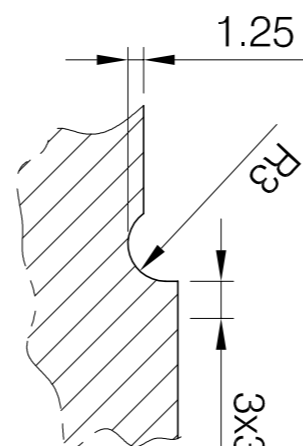
VIEW OF ARROW-B



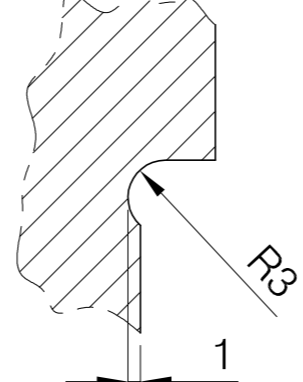
DETAIL-U



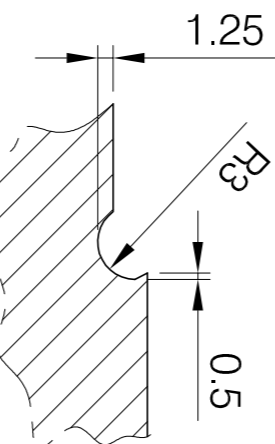
DETAIL-X



DETAIL-V



DETAIL-Y



DETAIL-W

## NOTES:-

1.  $\nabla$  ALL OVER UNLESS OTHERWISE STATED.
2. G-GROUND.
3. GEAR TO BE ULTRASONICALLY TESTED TO AA0850118 CATEGORY 2.
4. 1 OUT OF 8 HOLES TO BE LEFT UN-DRILLED IN EACH GEAR BY THE SUPPLIER FOR FURTHER DRILLING INSIDE BHEL.
5. THE SUPPLIER TO CARRY OUT MICRO STRUCTURE TESTING (INCLUDING BANDING) AS PER CLAUSE 3.3.1 OF SPECIFICATION TM24650 ON MIN.  $\varnothing$ 20mm BAR TAKEN OUT FROM EITHER OF 7 NOS.  $\varnothing$ 70mm HOLES TO BE MADE BY SUPPLIER.
6. THE MATERIAL SHALL BE AS PER RDSO SPECIFICATION NO. MP.0.2800.19 (LATEST REVISION) CLAUSES 1 TO 6.
7. THE QUALITY, TESTING & TEST SAMPLES REQUIREMENTS SHALL BE AS PER SPECIFICATION TM24650 (LATEST REVISION).

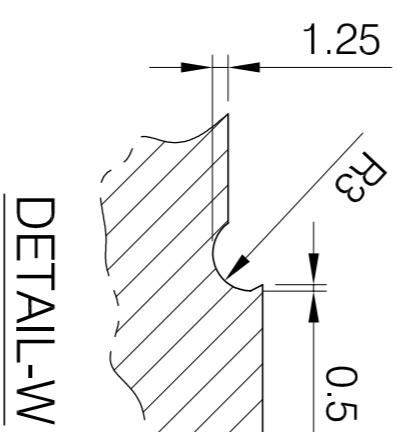
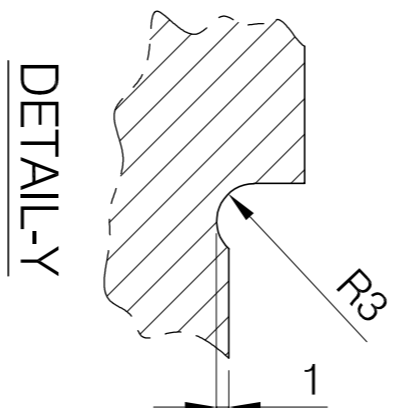
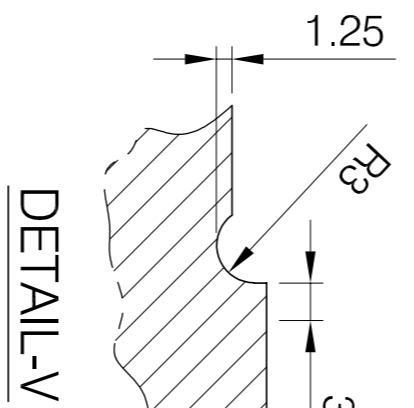
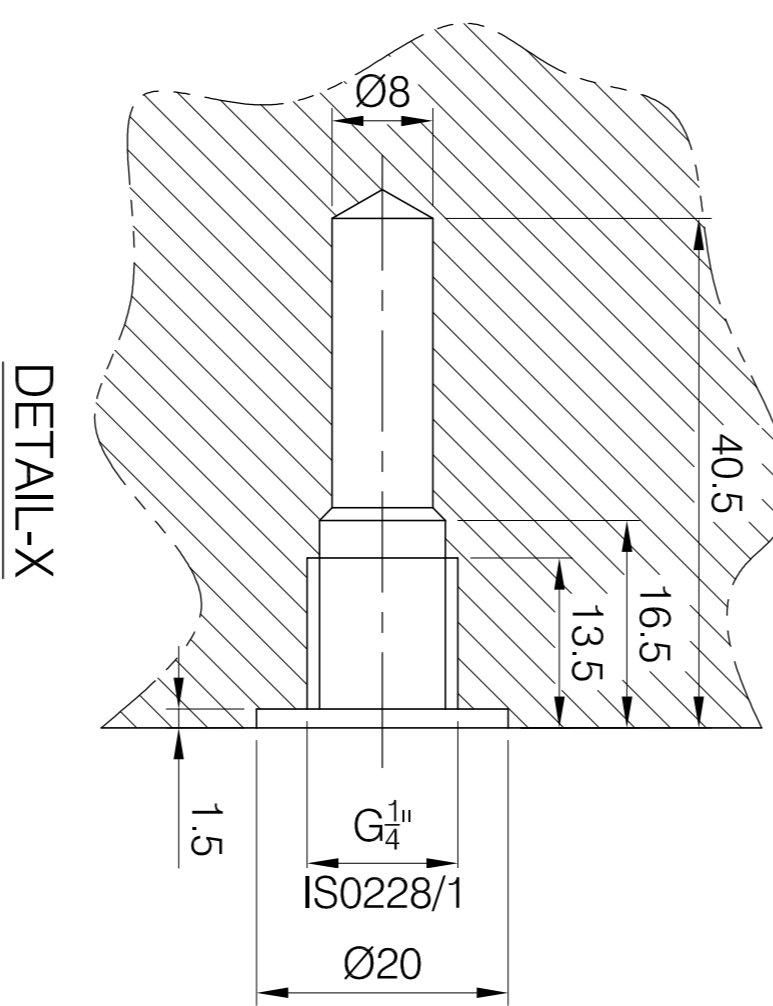
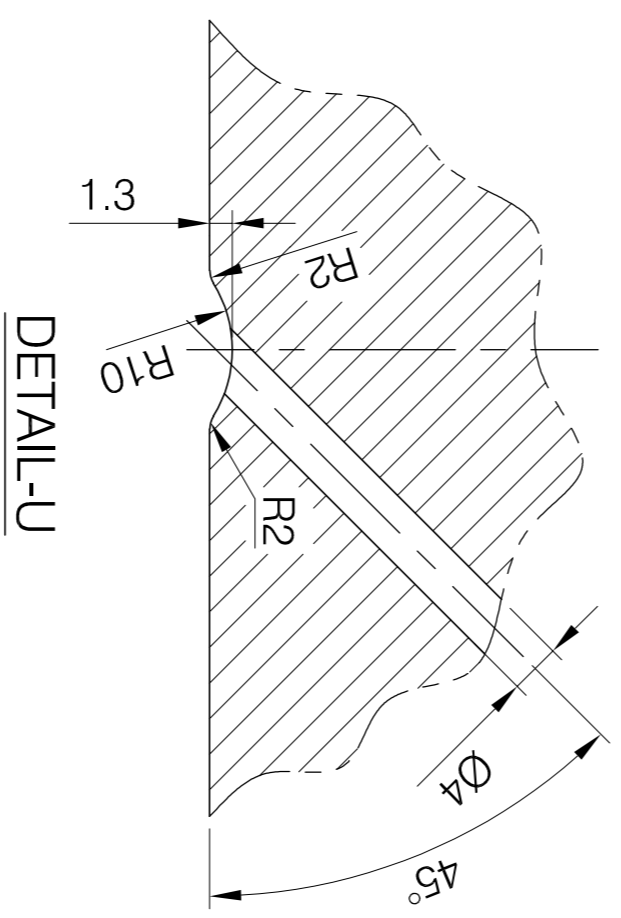
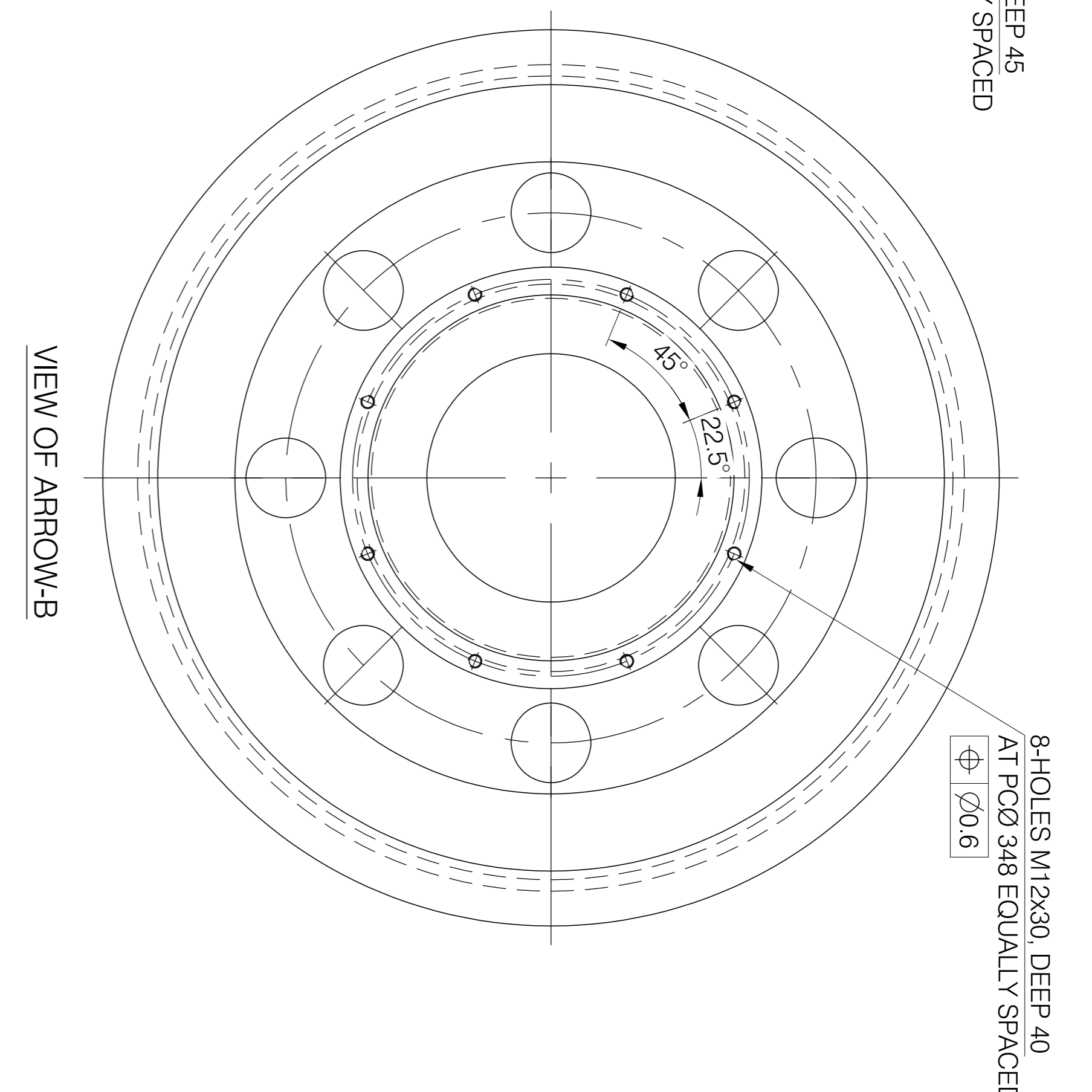
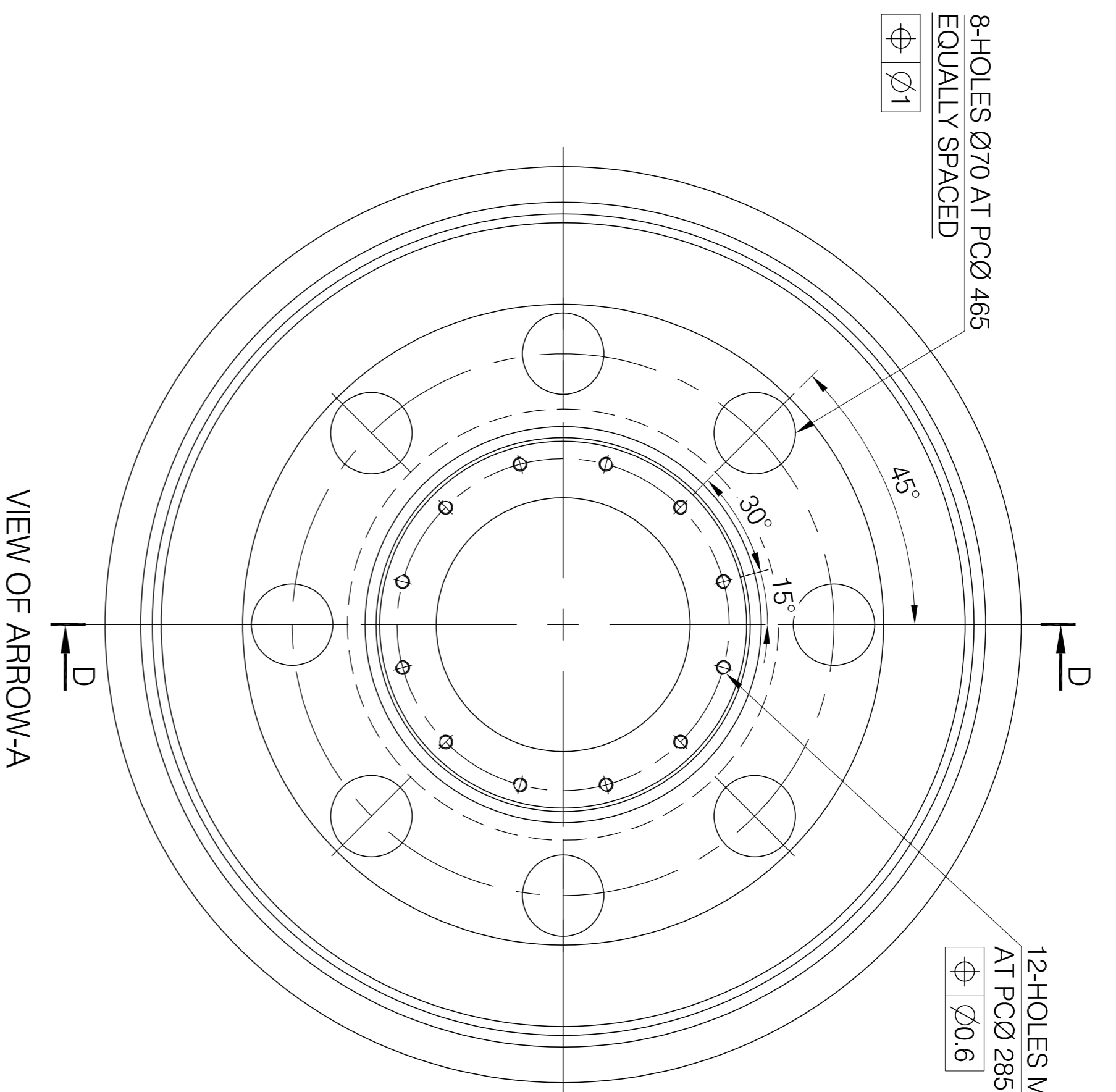
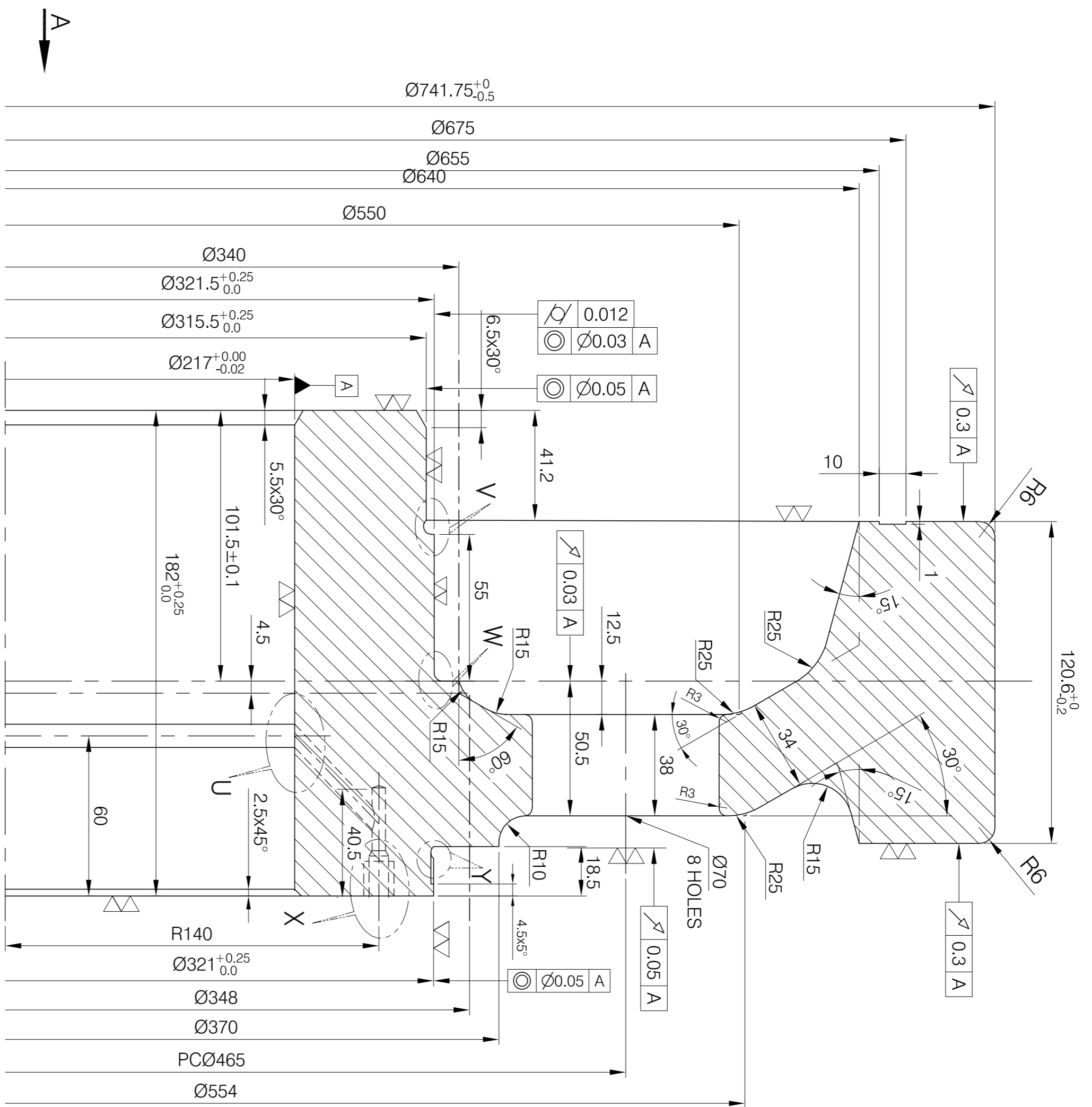
SYMBOL	Return (MAX.)
~	50
∇	25
∇∇	6.3
∇∇∇	0.8
∇∇∇∇	0.1

REF. DRG. NO.

SIGN. &amp; DATE

INVENTORY NO.

REV.	DATE	ALTERED	REV.	DATE	ALTERED	REV.	DATE	ALTERED	REV.	DATE	ALTERED
		CHECKED			CHECKED			CHECKED			CHECKED
		APPROVED			APPROVED			APPROVED			APPROVED
ZONE			ZONE			ZONE			ZONE		
1			2			3			4		



NOTES:-


1. ~~XXX~~ ALL OVER UNLESS OTHERWISE STATED.
2. G-GROUND.
3. GEAR TO BE ULTRASONICALLY TESTED TO AA0850418 CATEGORY 2.
4. 1 OUT OF 8 HOLES TO BE LEFT UN-DRILLED IN EACH GEAR BY THE SUPPLIER FOR FURTHER DRILLING INSIDE BHEL.
5. THE SUPPLIER TO CARRY OUT MICRO STRUCTURE TESTING (INCLUDING BANDING) AS PER CLAUSE 3.3.1 OF SPECIFICATION TM24650 ON MIN. Ø20mm BAR TAKEN OUT FROM EITHER OF 7 NOS. Ø70mm HOLES TO BE MADE BY SUPPLIER.
6. THE MATERIAL SHALL BE AS PER RD50 SPECIFICATION NO. MP.0.2800.19 (LATEST REVISION) CLAUSES 1 TO 6.
7. THE QUALITY TESTING & TEST SAMPLES REQUIREMENTS SHALL BE AS PER SPECIFICATION TM24650 (LATEST REVISION).

SYMBOL	Ha(μm) (MAX.)
—	50
▽	25
▽▽	6.3
▽▽▽	0.8
▽▽▽▽	0.1

REV.	DATE	ALTERED	REV.	DATE	ALTERED
		CHECKED			CHECKED
		APPROVED			APPROVED
ZONE			ZONE		ZONE
1                      2                      3					

DATE	ALTERED	REV.	DATE	ALTERED
	CHECKED		CHECKED	CHECKED
	APPROVED		APPROVED	APPROVED
	ZONE			
4		5		

REV	DATE	ALTERED	SDB	BY
		CHECKED	RC	REVISION
01	20.04.26	APPROVED	RC	REVISION
ZONE	DIMS: Ø321.5, Ø315.5, Ø217, 182, 60, 12.5 & 50.5 WHERE Ø321, Ø315, Ø218, 181, 60.5, 12 & 50.			
6				

EPT. TIME	UNTOL. DIMS. GR M/		SCALE	WEIGHT (K.G.)	REF. TO ASSY. DRG.	ITEM NO.	NO. OF ITEM
72 TEETH GEAR (READY TO HOB)							
DRAWING NO.					REV.		
2 445 16 64 052					01		
SHT. NO.					NO. OF SHT.		
01					01		
7					8		

No. HEF file 00PK(H8,TSM32)HEF-MQJUSBCD(Casopen No. 307029)

Generated from office by RANGLIN NIKHAIKASAHU, AE-IIPKSSMIBKSSMOOHERBOHEPSPHPRADNLEBTRICALYBIANTHRERESdPLANDSHEPP608235/06/2026 02:15 pm