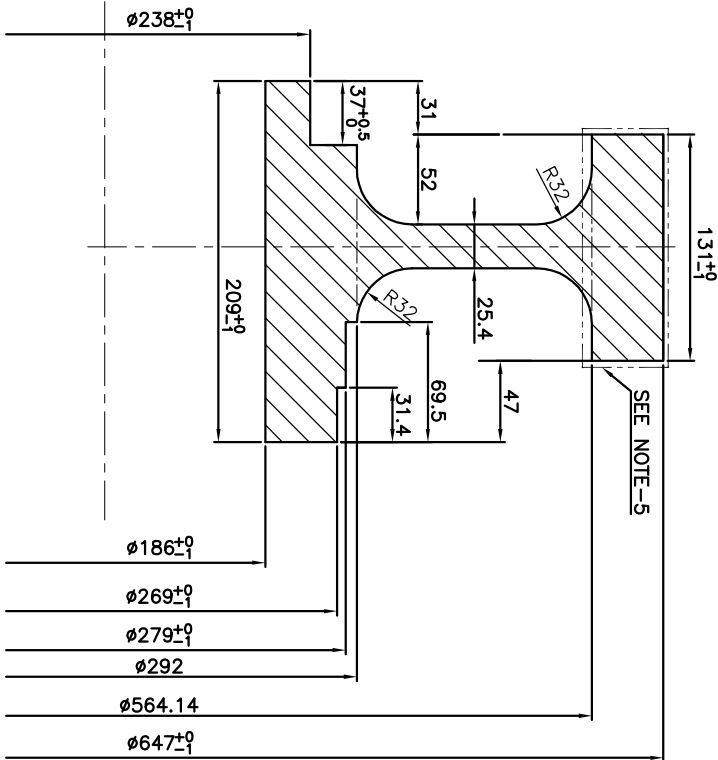


DRG. NO. 34451603002



1. THIS BLANK IS SUITABLE FOR MANUFACTURE OF GEAR WHEEL TO DRG. TO 24451603001
2. TOLERANCE ON UNTOLERANCED DIMENSION  $\pm 0.5$  MM.
3. MAXIMUM PERMISSIBLE CONCENTRICITY WITHIN  $\pm 0.5$  MM.
4. ALL CORNERS RADI SHALL BE 0.5 EXCEPT WHERE STATED.
5. GEAR TO BE ULTRASONICALLY TESTED ON RIM PORTION (AS SHOWN BY CHAIN DOTTED LINE) TO AA0850118 CATEGORY 2.

[illegible]