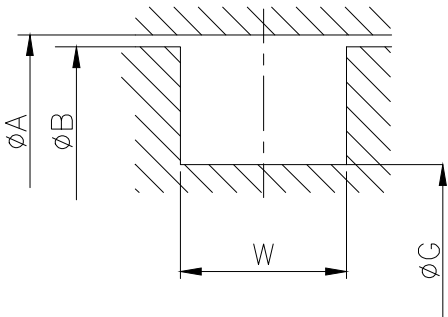


(ALL DIMENSIONS ARE IN mm)

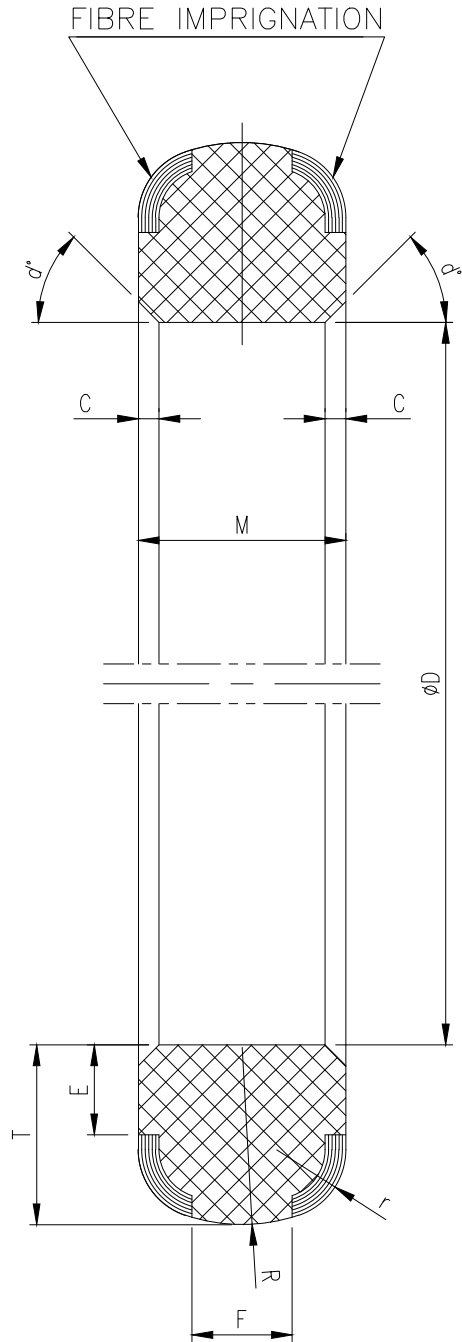


(GROOVE DETAIL FOR D-SEAL)

TECHNICAL REQUIREMENTS:

- 1. MATERIAL: ACRYLO NITRILE RUBBER AS PER BS 2751 COMPOUND NO. BA-80 HAVING SHORE HARDNESS 75 TO 80.
- 2. FIBRE IMPRIGNATION TO BE DONE AS SHOWN.
- 3. MOULDED ENDLESS RING TO BE SUPPLIED TO DRAWING DIMENSION. SEAL TO BE FREE FROM PIPS, PIN HOLES ETC. JOINTS NOT ALLOWED.
- 4. SEAL MUST BE SUITABLE FOR OIL AND RIVER WATER APPLICATION:
  - 4.1. WATER WORKING PRESSURE = 40 Kg/CM<sup>2</sup>
  - 4.2. WATER TEST PRESSURE = 60 Kg/CM<sup>2</sup>
  - 4.3. OIL WORKING PRESSURE = 60 Kg/CM<sup>2</sup>
  - 4.4. MAXIMUM OIL PRESSURE = 90 Kg/CM<sup>2</sup>
- 5. DIMENSIONS ØD AS WELL AS DIMENSIONS r, R, d°, E, F, T, C & M OF SEAL ARE TO BE STRICTLY ACHIEVED.

\* DENSITY OF RUBBER TAKEN = 1.3 gms/cc.



ITEM NO.	01	02	03
WT. IN Kg.	3.00*	2.52*	2.97*
r	3	3	3
R	12.8	12.8	12.8
d°	45°	45°	45°
E	11	6	11
F	7	9	7
T	21.75 <sup>+0.2</sup> <sub>0.0</sub>	13.75 <sup>+0.2</sup> <sub>0.0</sub>	21.75 <sup>+0.2</sup> <sub>0.0</sub>
C	1.5	1.5	1.5
W	14 <sup>0.0</sup> <sub>-0.2</sub>	16 <sup>+0.2</sup> <sub>0.0</sub>	14 <sup>0.0</sup> <sub>-0.2</sub>
M	13 <sup>±0.25</sup>	15 <sup>±0.25</sup>	13 <sup>±0.25</sup>
ØA	3100 <sup>+0.20</sup> <sub>+0</sub>	3100 <sup>+0.20</sup> <sub>+0</sub>	3280 <sup>+0.20</sup> <sub>+0</sub>
ØB	3100 <sup>-0.6</sup> <sub>-0.8</sub>	3100 <sup>-0.6</sup> <sub>-0.8</sub>	3280 <sup>-0.6</sup> <sub>-0.8</sub>
ØD	3054 <sup>0</sup> <sub>-1</sub>	3068 <sup>0</sup> <sub>-1</sub>	3232 <sup>0</sup> <sub>-1</sub>
ØG (NOM) (GROOVE)	3062	3078	3242
ASSY. ITEM NO.	49	50	48

VAR-0		REMARK		78	79	25	27	29	58		59	60	77		29	31	34	45		55	56	57	58	65	72	
				VAR NO.	ITEM NO.		DESCRIPTION		STD.		DRAWING NO.		77		IT.NO.	32	33	46	54		A	C	UNIT	QTY.	71	73
28 → CARD TYPE-3								28 → CARD TYPE-1						28 → CARD TYPE-2												
ADDITIONAL INFORMATION				TYPE OF PRODUCT OR NAME OF CUSTOMER/PROJECT																						
STATUS OF DRAWING U				PUNATSANGCHHU-II HEP																						
DISTRIBUTION OF PRINTS				Bharat Heavy Electricals Ltd. Bhopal																						
HTE-2, THX-1				DRN DKJ																						
WTM(P)-1, WTM(S)-4				CKD H.KUMAR																						
				APPD K.PRASAD																						
REV.		DATE		ALTERED		DKJ		-sd-		DEPT. H.T.E.		UNTOL. DIMS. GR.		SCALE		WEIGHT(K.G.)		REF.TO ASSY.DRG.		ITEM NO.		NO.OF ITEM				
				CHECKED		HK		-sd-		CODE				N.T.S		SEE TABLE		0 212 01 18801		SEE TABLE		03				
				APPD.		AM		-sd-		402																
SEAL TYPE CHANGED.				TITLE																						
				D-SEAL																						
				DRAWING NO. 3 212 01 18805																						
				SHT. NO. 01 NO. OF SHT. 01																						