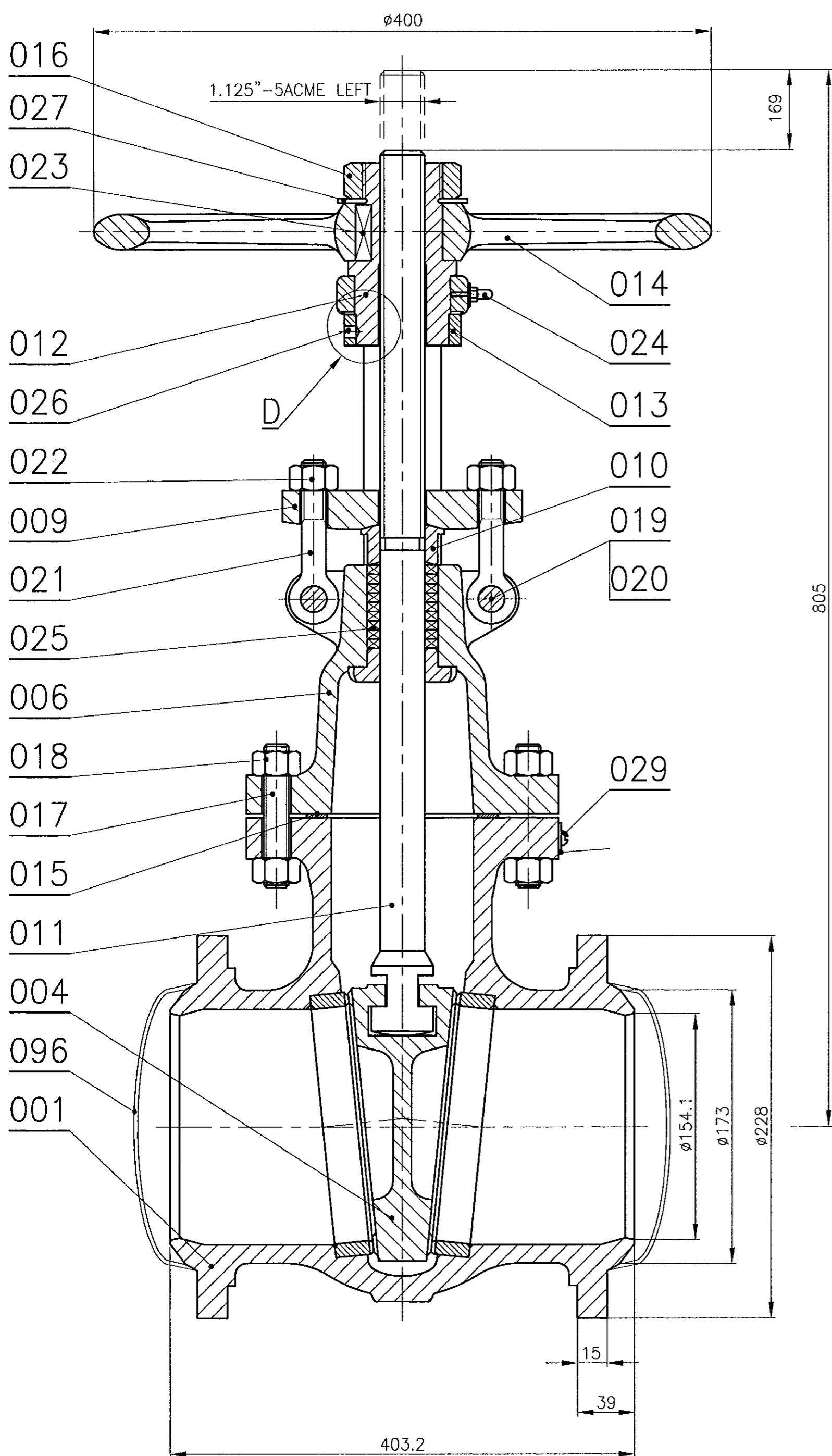


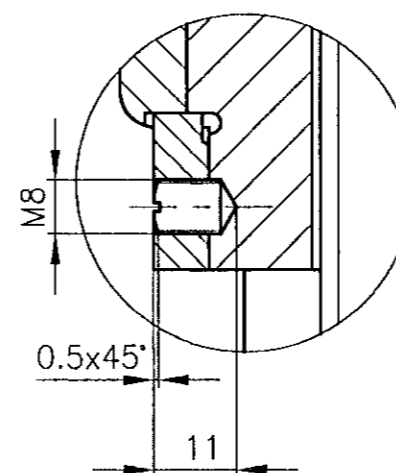
DRAWING NO.  
2-V-N218-07835

ALL DIMENSIONS ARE IN MILLIMETRES. FOR TOLERANCES OF UNTOLERANCED DIMENSIONS DURING MANUFACTURE REFER RELEVANT QCP / QP



SL. No.	TYPE No.	ASSY. DRG No.	MATL. SPECN.	VALVE SPECN.
01	N218	2-V-N218-07835	A216 WCB	6"-150C WCB BW GV HW

DETAIL-D



DRILL & TAP DURING ASSEMBLY

NOTES:

1. THE BUTT WELD END EDGE PREPARATION AS PER PLANT STD. AND MAY VARY TO SUIT CUSTOMER'S REQUIREMENT.
2. DIMENSIONALLY IDENTICAL SEAT RING MAY BE EITHER SCREWED OR SCREWED AND SEAL WELD.
3. END COVER SHALL BE TACK WELD AT 3 EQUAL DISTANCED PLACES AFTER EDGE PREPARATION
4. HYDRAULIC TEST PROCEDURE SHALL BE AS PER LATEST APPLICABLE QUALITY PROCEDURE.

No OFF	DESCRIPTION	MATL CODE	MATL SPECN	HEAT TREATMENT	SCRAP SORT	NET WT (kg)	GROSS WT (kg)	DRAWING No	ITEM No	
	TYPE OF PRODUCT OR NAME OF CUSTOMER/PROJECT									
	BHARAT HEAVY ELECTRICALS LTD., UNIT: HIGH PRESSURE BOILER PLANT. TIRUCHIRAPALLI-620014.							NAME K.P.LEON SIGN DATE 08.04.98 NO.OF VAR.		
	DEPT V L CODE 320							SCALE NTS. WEIGHT (KG). 91.5	REFERENCE INFORMATIONS CAD:C207835	NO. OF ITEMS
	TITLE GATE VALVE ASSY. (6"-150C)						CARD CODE U 01	DRAWING NO. 2-V-N218-07835	REV	

CAUTION: The information on this document is the property of BHARAT HEAVY ELECTRICALS LTD. It must not be used directly or indirectly in any way detrimental to the interest of the company.

REV	DATE	ALTERED
		CHD & APPD
ZONE		