

2-V-0000-06047  
DRAWING NO.

ALL DIMENSIONS ARE IN MILLIMETRES. FOR TOLERANCES OF UNTOLERANCED DIMENSIONS DURING MANUFACTURE REFER RELEVANT QCP / QP

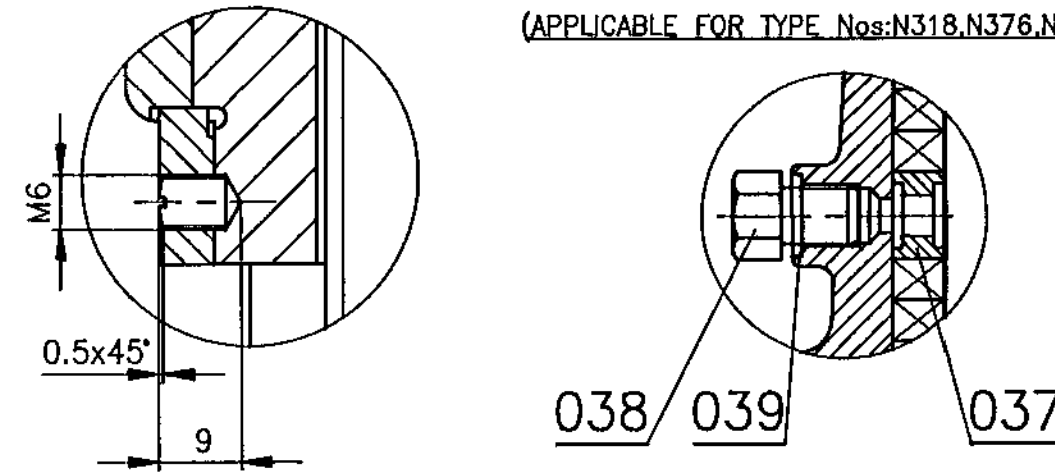
DETAIL-D

SEALED GLAND ARRANGEMENT

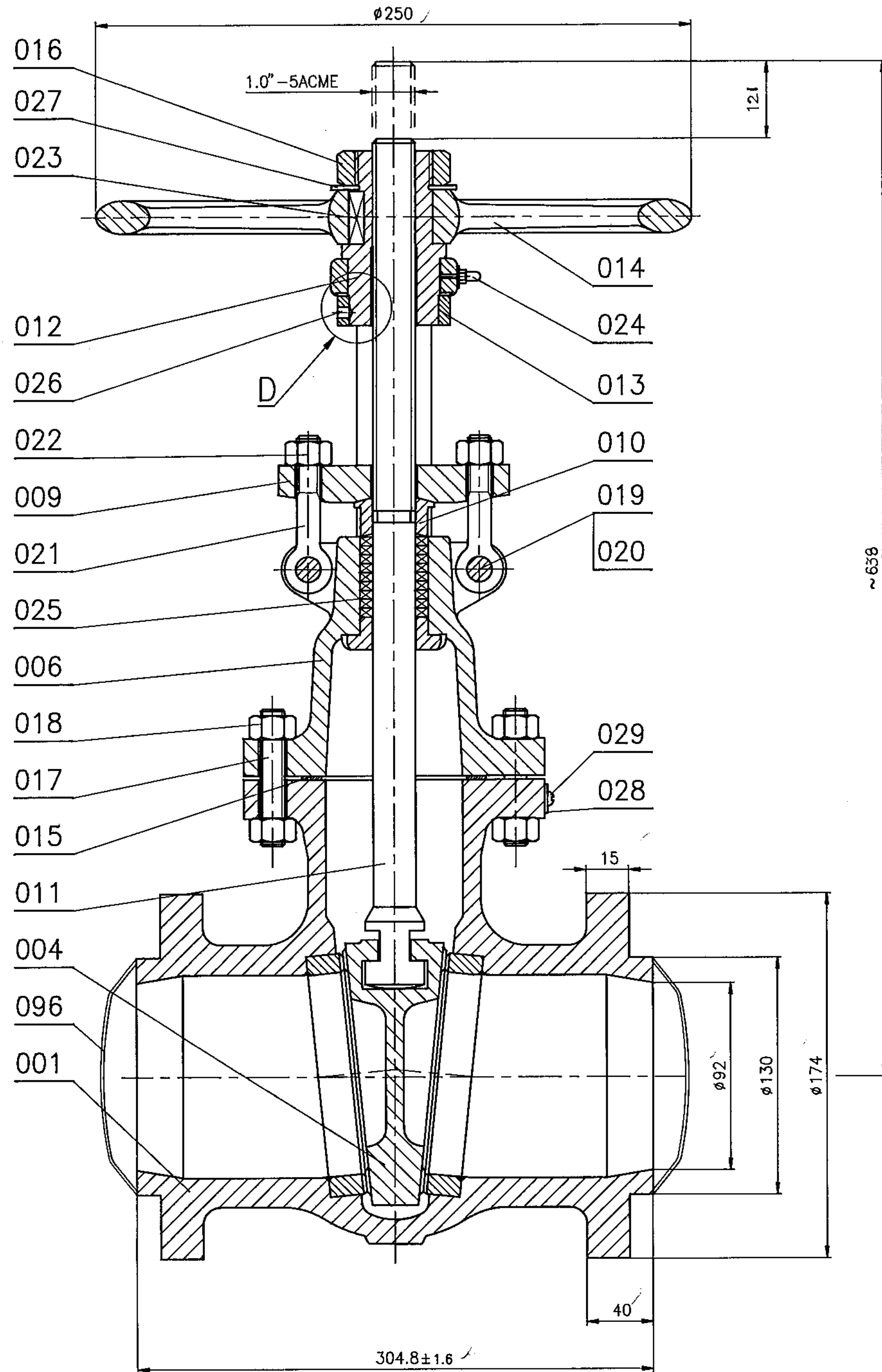
(APPLICABLE FOR TYPE Nos: N318, N376, N377 & N378)

NOTES:

1. THE BUTT WELD END EDGE PREPARATION AS PER PLANT STD. AND MAY VARY TO SUIT CUSTOMER'S REQUIREMENT.
2. DIMENSIONALLY IDENTICAL SEAT RING MAY BE EITHER SCREWED OR SCREWED AND SEAL WELD.
3. END COVER SHALL BE TACK WELD AT 3 EQUAL DISTANCED PLACES AFTER EDGE PREPARATION
4. HYDRAULIC TEST PROCEDURE SHALL BE AS PER APPLICABLE SIP (REF. LATEST REV.)



DRILL & TAP DURING ASSEMBLY



SL. No.	TYPE No.	ASSY. DRG No.	MATL. SPECN.	VALVE SPECN.	HYD. TEST PR. IN Kg/cm <sup>2</sup>		PRESSURE/TEMPERATURE RATINGS								
					SHELL	SEAT	TEMP. IN °C		PRESSURE IN Kg/cm <sup>2</sup>		TEMP. IN °C		PRESSURE IN Kg/cm <sup>2</sup>		
01	N294	2-V-N294-06047	A216 WCB	4"-150C WCB BW GV HW	30	20	TEMP. IN °C		38	200	300	400	425	-	-
							PRESSURE IN Kg/cm <sup>2</sup>		20	14	10	7	6	-	-
02	N295	2-V-N295-06047	A216 WCC	4"-150C WCC BW GV HW	30	20	TEMP. IN °C		38	200	300	400	425	-	-
							PRESSURE IN Kg/cm <sup>2</sup>		20	14	10	7	6	-	-
03	N296	2-V-N296-06047	A217 WC6	4"-150C WC6 BW GV HW	30	20	TEMP. IN °C		38	200	300	400	-	500	550
							PRESSURE IN Kg/cm <sup>2</sup>		20	14	10	7	-	3	1.5
04	N297	2-V-N297-06047	A217 WC9	4"-150C WC9 BW GV HW	30	20	TEMP. IN °C		38	200	300	400	-	500	550
							PRESSURE IN Kg/cm <sup>2</sup>		20	14	10	7	-	3	1.5
05	N318	2-V-N318-06047	A216 WCB	4"-150C WCB BW GV HW SG	30	20	TEMP. IN °C		38	200	300	400	425	-	-
							PRESSURE IN Kg/cm <sup>2</sup>		20	14	10	7	6	-	-
06	N376	2-V-N376-06047	A216 WCC	4"-150C WCC BW GV HW SG	30	20	TEMP. IN °C		38	200	300	400	425	-	-
							PRESSURE IN Kg/cm <sup>2</sup>		20	14	10	7	6	-	-
07	N377	2-V-N377-06047	A217 WC6	4"-150C WC6 BW GV HW SG	30	20	TEMP. IN °C		38	200	300	400	-	500	550
							PRESSURE IN Kg/cm <sup>2</sup>		20	14	10	7	-	3	1.5
08	N378	2-V-N378-06047	A217 WC9	4"-150C WC9 BW GV HW SG	30	20	TEMP. IN °C		38	200	300	400	-	500	550
							PRESSURE IN Kg/cm <sup>2</sup>		20	14	10	7	-	3	1.5

NO OFF	DESCRIPTION	MATL CODE	MATL SPECN	HEAT TREATMENT	SCRAP SORT	NET WT (kg)	GROSS WT (kg)	DRAWING No	ITEM No
TYPE OF PRODUCT OR NAME OF CUSTOMER/PROJECT									
BHARAT HEAVY ELECTRICALS LTD. UNIT: HIGH PRESSURE BOILER PLANT. TIRUCHIRAPALLI - 620014.				DRN	K.P.LEON	SIGN	DATE	NO. OF	
				CHD	N.OHANAPAL		06.12.95	VAR.	
				APPD	A.VISWANATHAN		01/02/96		
DEPT	VL	SCALE	WEIGHT (KG).	REFERENCE INFORMATION		NO. OF			
CODE 320		NTS.	51.0	CAD: C206047					
TITLE						CARD CODE	DRAWING NO.	REV	
GATE VALVE ASSY. (4"-150C)						U 01	2-V-0000-06047		

CAUTION: The information on this document is the property of BHARAT HEAVY ELECTRICALS LTD. It must not be used directly or indirectly in any way detrimental to the interest of the company.

REV	DATE	ALTERED
		CHD & APPD
ZONE		

