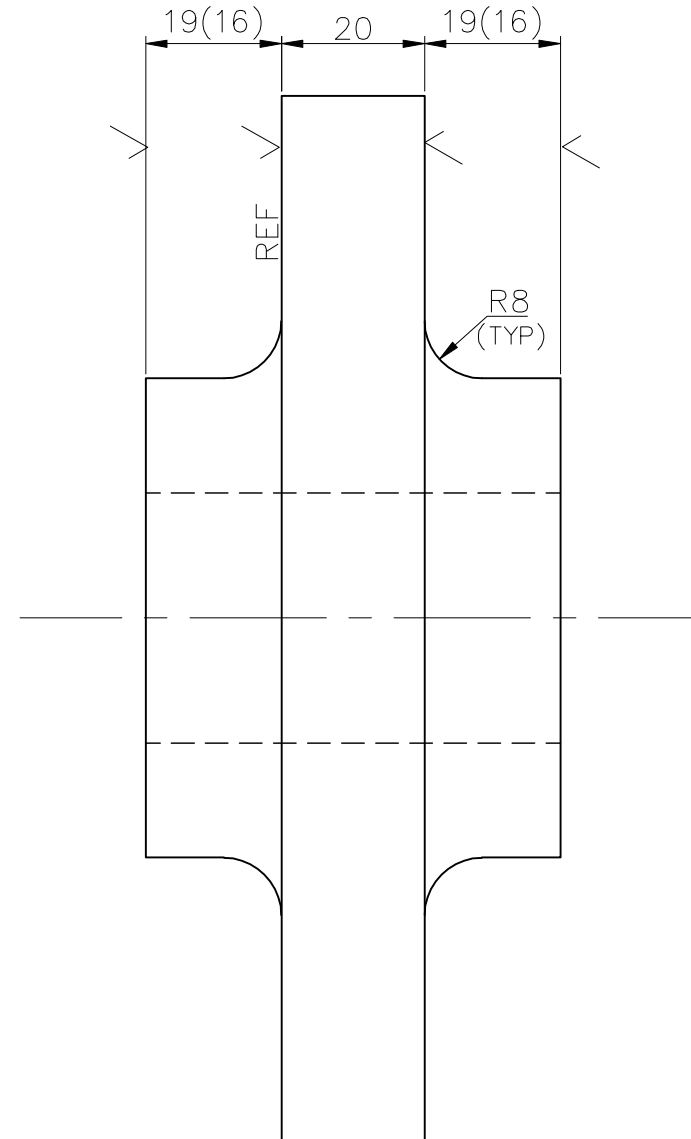
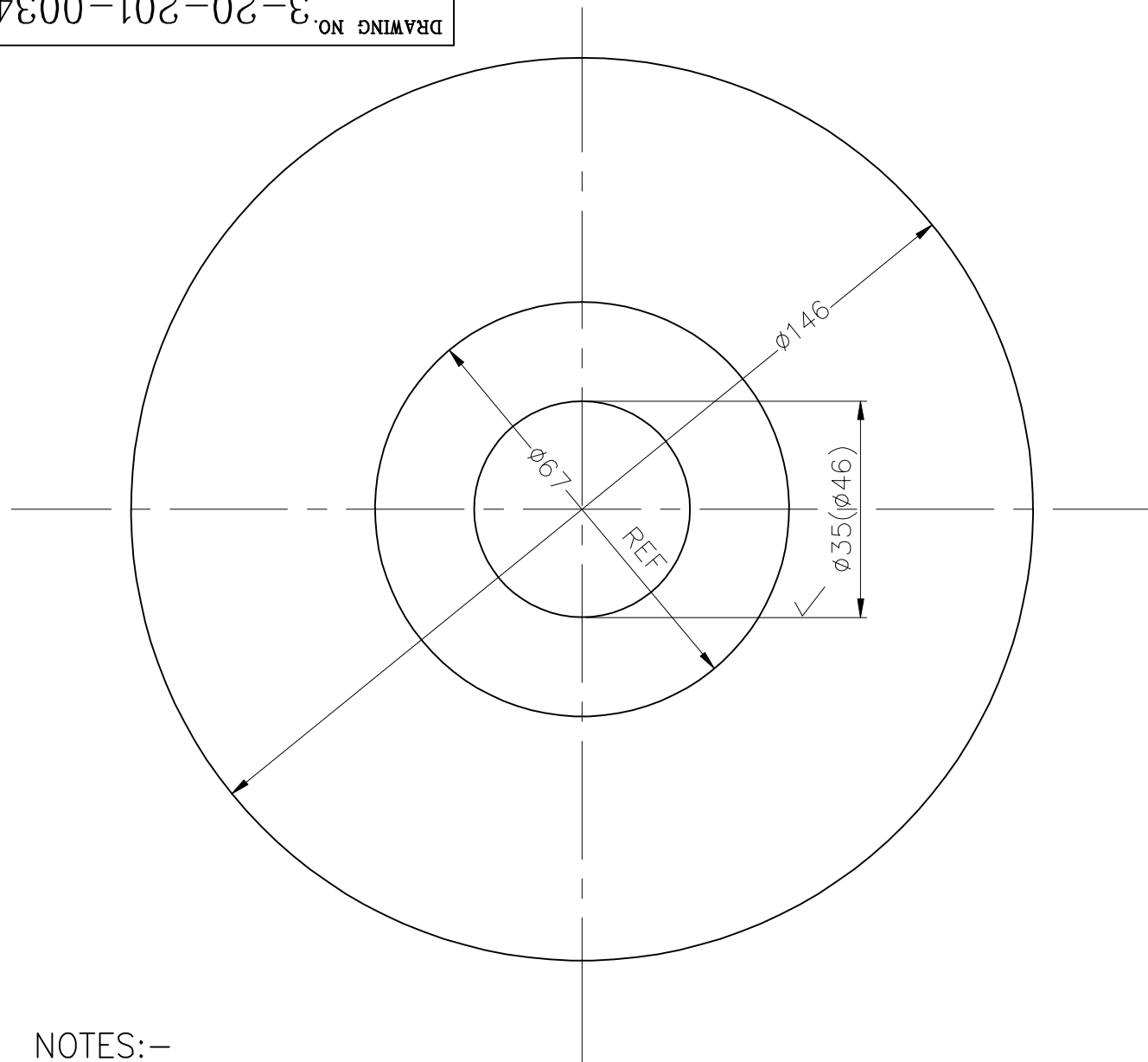


DRAWING NO. 3-20-201-00346



NOTES:-


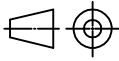
- ✓ MARKS INDICATE THE SURFACES TO BE MACHINED FURTHER.
- NECESSARY MACHING ALLOWANCES ARE ALREADY INCLUDED IN THE INDICATED DIMENSION AND THE FINISH MACHINED DIMENSIONS ARE GIVEN IN BRACKETS FOR INFORMATION ONLY.
- MATERIAL STANDARD FOR THE CASTING IS TO BE ADHERED AS APPLICABLE.
- UNSPECIFIED RADII ARE TO BE 3 MM MAX.
- REFER DRG.No. 3-20-201-00122 FOR MACHINING.
- FOR DIMENSIONAL TOLERANCES REFER APPLICABLE QUALITY DOCUMENTS FOR STEEL CASTING.

REV	DATE	ALTERED	J.S
05	04.01.12	CHD & APPD	S.K.G & K.S

CASTING WEIGHT CORRECTED.

DCN : SB : 801294 / 5014784

STYLE NO	NO OFF	DESCRIPTION	MATL CODE	MATL SPECN	HEAT TREATMENT	SCRAP SORT	NET WT (kg)	GROSS WT (kg)	DRAWING No	ITEM No
02	1	CASTING	920058090200	ASTM A216 Gr. WCB			3.28			
01	1	CASTING	920058090000	ASTM A48 CL40			3.28			

CAUTION: The information on this document is the property of BHARAT HEAVY ELECTRICALS LTD. It must not be used directly or indirectly in any way detrimental to the interest of the company.	TYPE OF PRODUCT OR NAME OF CUSTOMER/PROJECT											
	 BHARAT HEAVY ELECTRICALS LTD., UNIT: HIGH PRESSURE BOILER PLANT. TIRUCHIRAPALLI-620014. 365-121					DRN	V.ARUMUGAM	SIGN	V.A	DATE	11.06.01	NO. OF VAR.
						CHD	K.SRIDHARAN	K.S	11.06.01			
						APPD	S.NATARAJAN	S.N	11.06.01			
DEPT	SB	 SCALE NTS	WEIGHT (KG).	-	REFERENCE INFORMATION				NO. OF ITEMS			
CODE	330		TITLE	ELEMENT GEAR CASTING			CARD CODE	U 01	DRAWING NO.	3-20-201-00346	REV	05