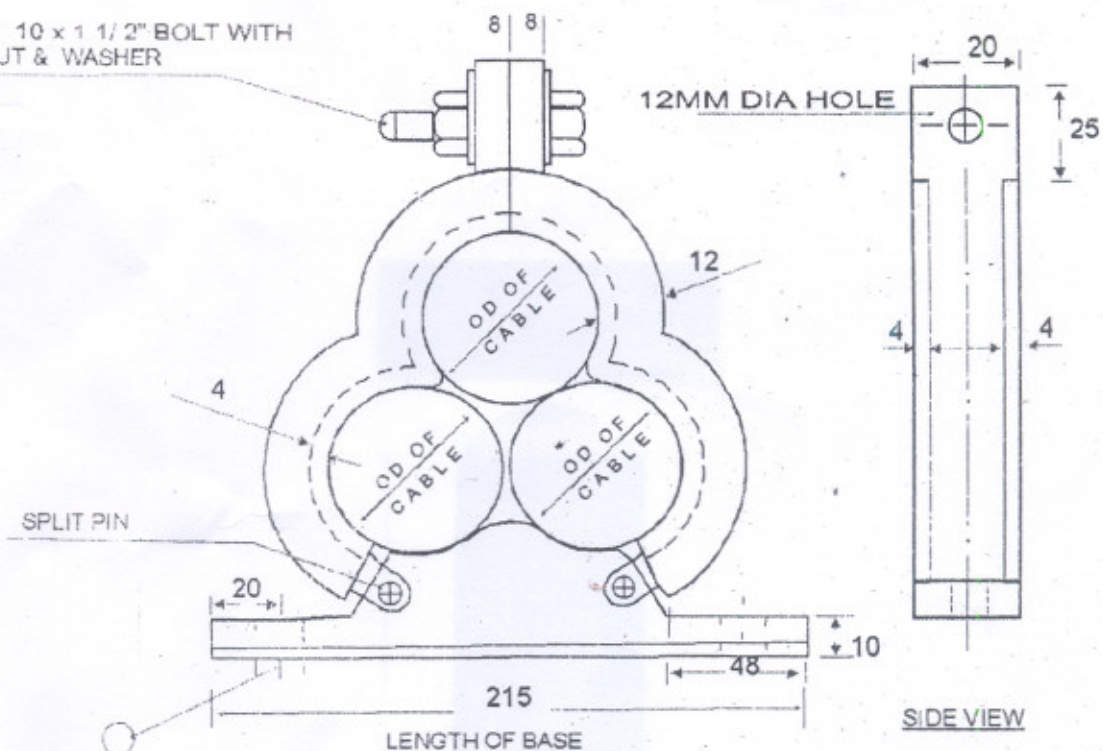
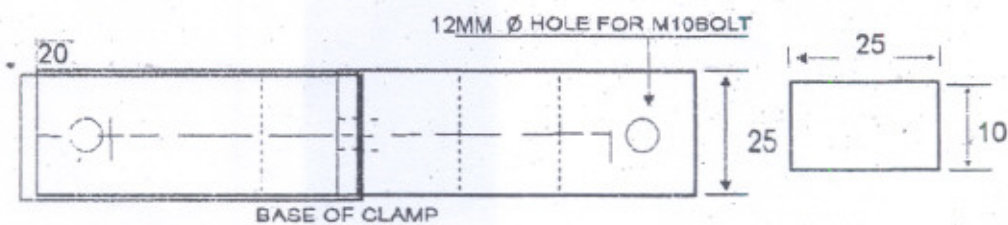


M 10 x 1 1/2" BOLT WITH NUT & WASHER



12 MM Ø HOLE FOR M 10 BOLT



ALL DIMENSIONS ARE IN MM. ( VARIATION - 5% )

SR NO	DESCRIPTION		
I	TREFOIL CLAMP PARTS WILL BE CAST FROM COML.GR.ALUMINIUM.		
II	ALL SHARP EDGES, CORNERS & ENDS WILL BE ROUNDED SMOOTH.		
III	EACH CLAMP WILL BE PROVIDED WITH THREE NUMBER OF M.S.ZINC PASSIVATED FASTENER THE FASTNER'S WILL BE COMPLETE WITH NUT, BOLT, 02 NUMBERS PLAIN WASHERS AND ONE SPRING WASHER.		
IV	FINISH - PLAIN		
SR. NO	CABLE SIZE	CABLE OVERALL DIA ( D )	QUANTITY
1	1 CORE x 630 SQ.MM	58 MM	1000 Nos.
2	1 CORE x 300 SA.MM	47MM	1000 Nos