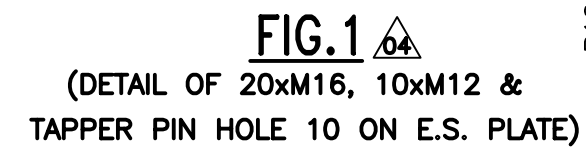
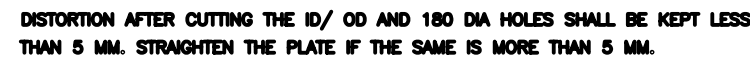



INVENTORY NO



1	PLATE E.S. & T.S	2-135-01-31207		PL:45	AA1011819201	669	878
					AA10119	2	
ITEM NO.	DESCRIPTION	DRAWING NO.	VAR. NO.	RAW MATERIAL SIZE OR CASTING DRG. NO. OR FORGING DRG. NO.	MATERIAL CODE	NET WT.	GROSS WT.
					MATERIAL SPECN.	QUANTITY	

				REV. 07	DATE 19.12.05	ALTD CHD.	APPD.	REV. 06	DATE 03.02.05	ALTD CHD.	APPD.	REV. 05	DATE 11-1-2001	ALTD CHD.	APPD.
				ZONE	PLATE THICKNESS CHANGED FROM 40MM TO 45MM,M/C ADDED ON BOTH SIDES.			ZONE	CHORD DISTANCES FOR M12 HOLES WERE MODIFIED AS MARKED AS 			ZONE	4xM12 HOLES FOR FIXING WINDING HOLDER BRACKETS ADDED IN FIG.1		
REV. 04	DATE 14.12.00	ALTD CHD.	APPD.	REV. 03	DATE 7.8.00	ALTD CHD.	APPD.	REV. 02	DATE 3.8.00	ALTD CHD.	APPD.	REV. 01	DATE 16.03.00	ALTD CHD.	APPD.
ZONE	FIG.1 ADDED . DIMENSION 46.6 MADE TO 50. TAPPER PIN HOLE 16 MADE TO 10.			ZONE	PLATE THICKNESS CHANGED FROM TO R1250 & R1230 RESPECTIVELY SECTION A-A IS REMOVED E2 C7 TAPPED HOLES ON E.S PLATE IS REMOVED			ZONE	20x M16 HOLES ADDED 10x M12 HOLES ADDED 4 TAPPER PIN HOLES ADDED FOR BOTH T.S & E.S ONLY ONE DRG. WAS MADE			ZONE	SECTION-AA ADDED & WELDING ADDED LOCATION OF 12xØ180 & 12xØ38 HOLES ARE CHANGED		

		BHARAT HEAVY ELECTRICALS LIMITED HYDERABAD		DRN.	NAME	SIGN.	DATE	NO. OF VAR.
				CHD.	S.RUKMINI		7.8.00	NA
				APPD.	T.K.RAJU		7.8.00	
					M.M.RAO		7.8.00	
DEPT.	EME		SCALE	WEIGHT (KG)	REF. TO ASSY DRG.		ITEM NO.	NO. OF ITEMS
CODE	425		N.T.S	669	1-135-01-31135		1	NA
TITLE					CARD CODE	DRAWING NO.		REV.
PLATE E.S. & T.S						2-135-01-31207		07
						SHEET NO. 01	NO OF SHEETS	01