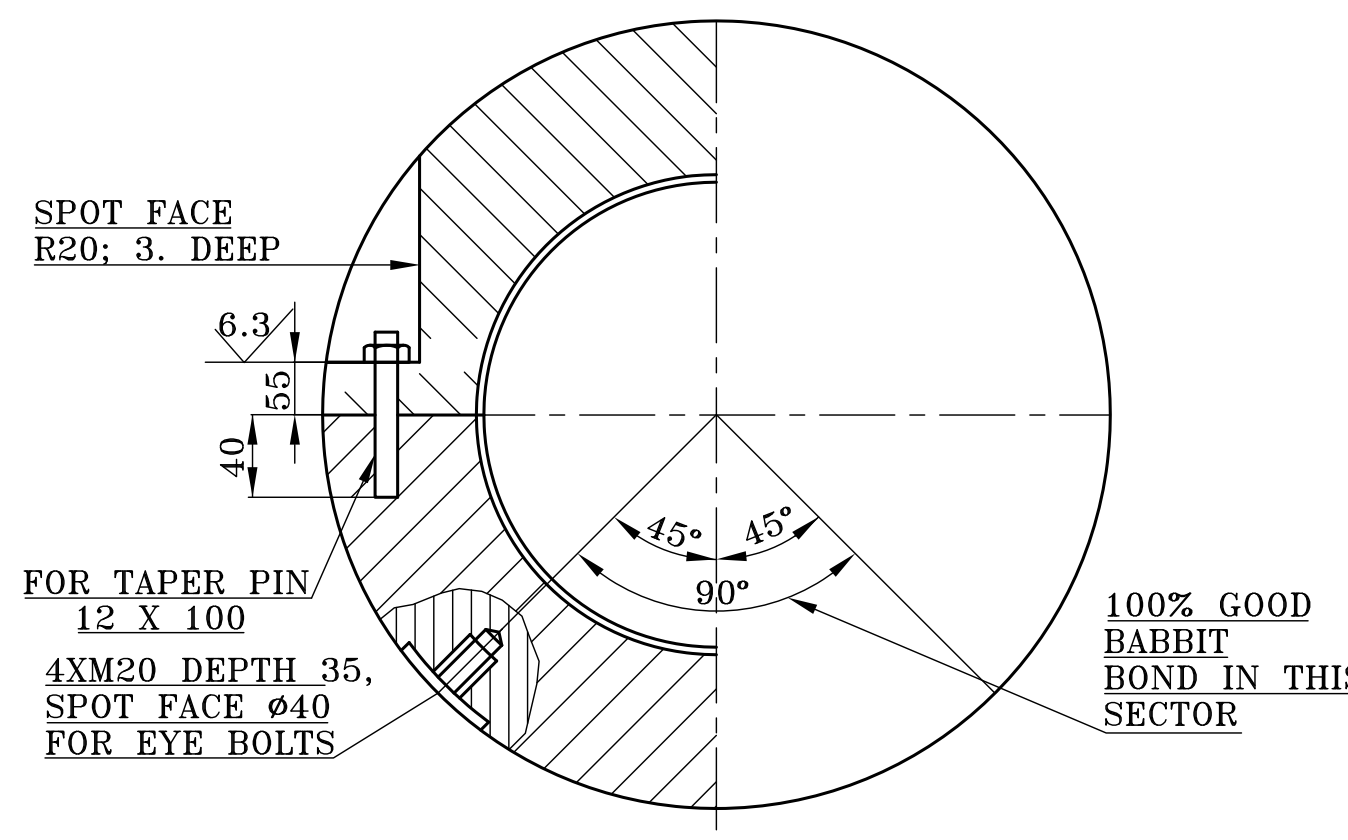
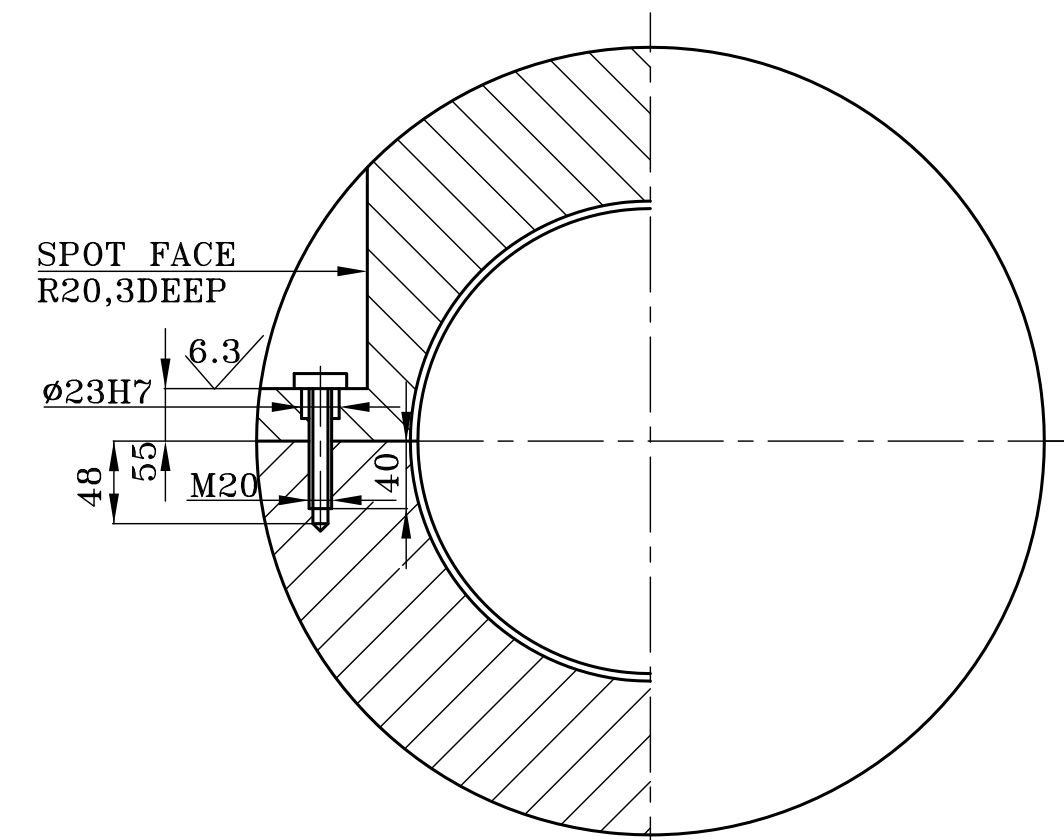
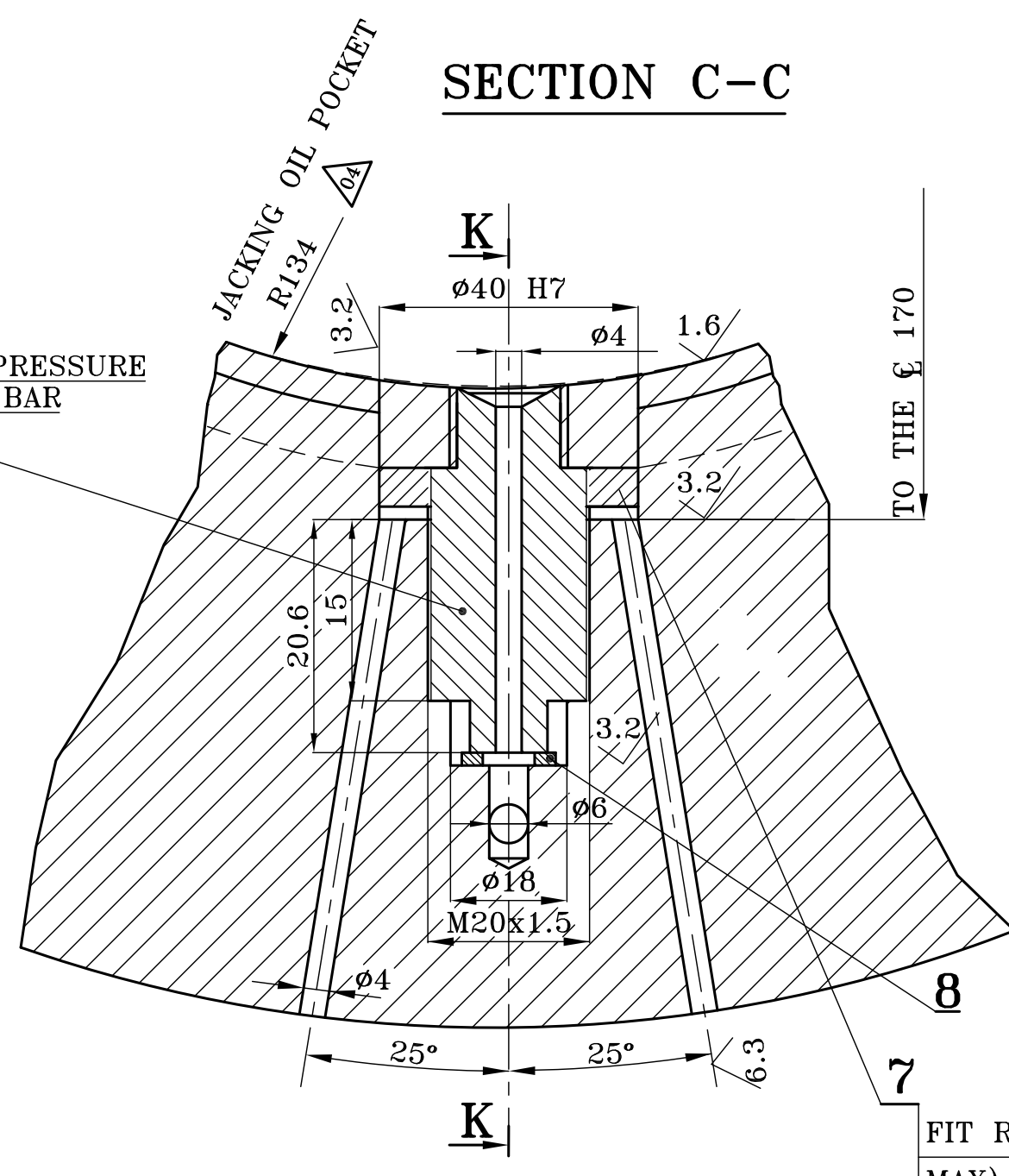
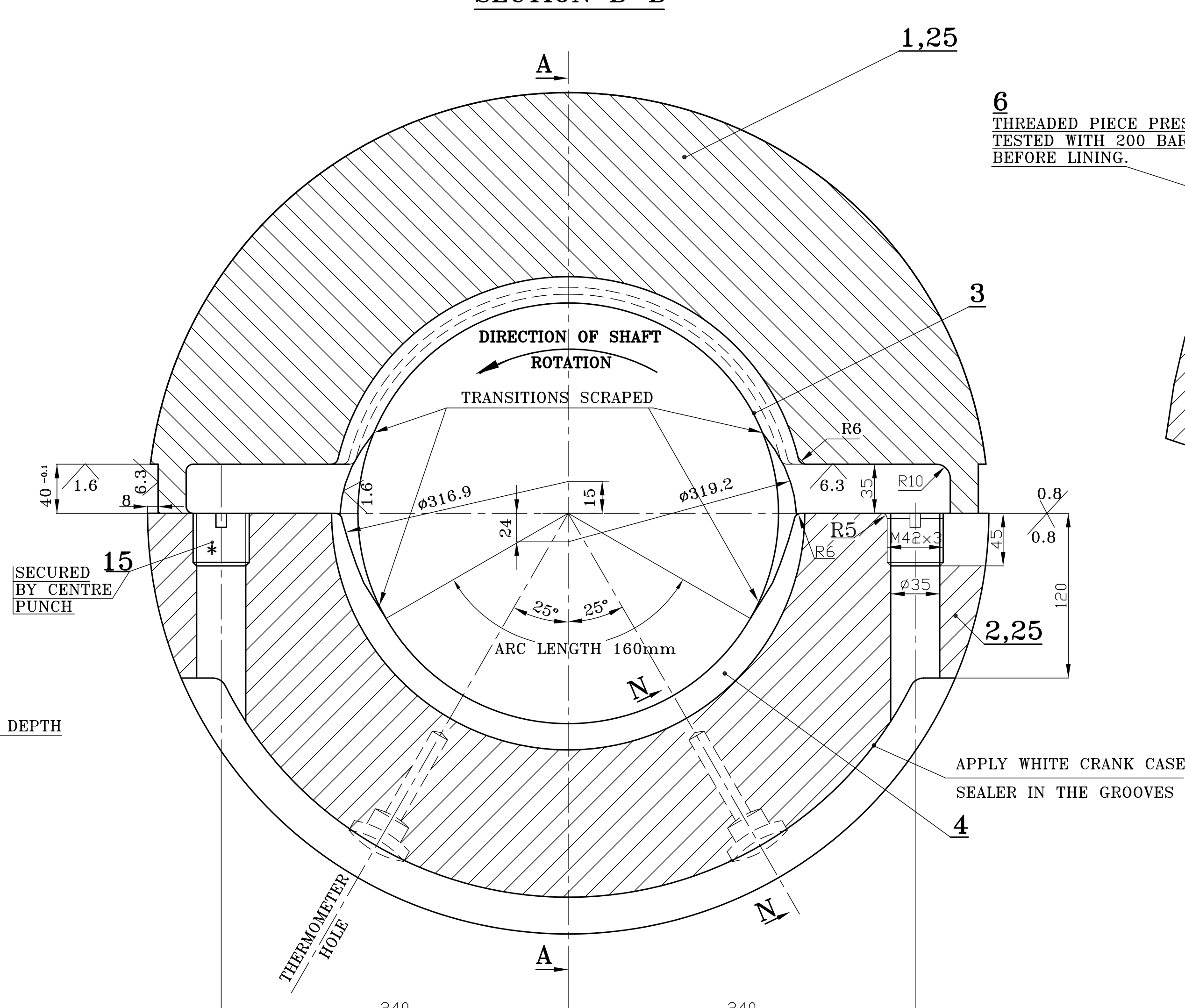
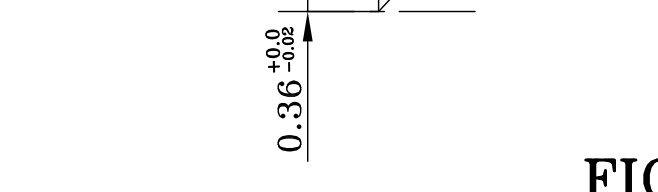


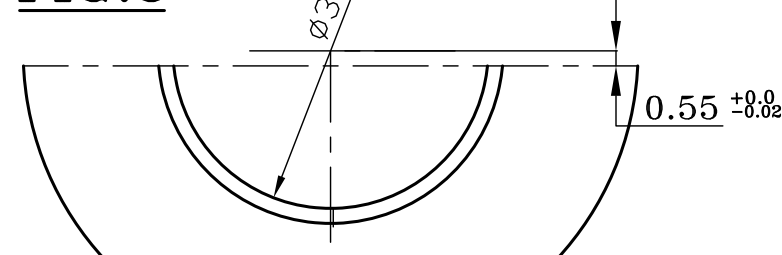
SECTION H-H



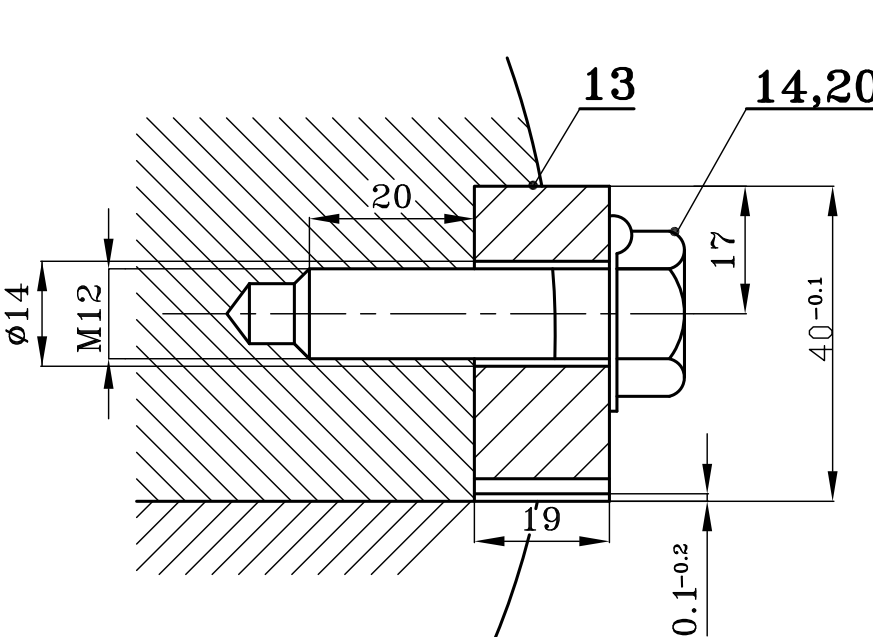
THE CLEARANCES IN THE TOP PORTION OF THE BEARING SHELL ARE TO BE OBTAINED BY A SPECIAL MACHINING OPERATION ON THE TOP HALVES AS PER FIG.4



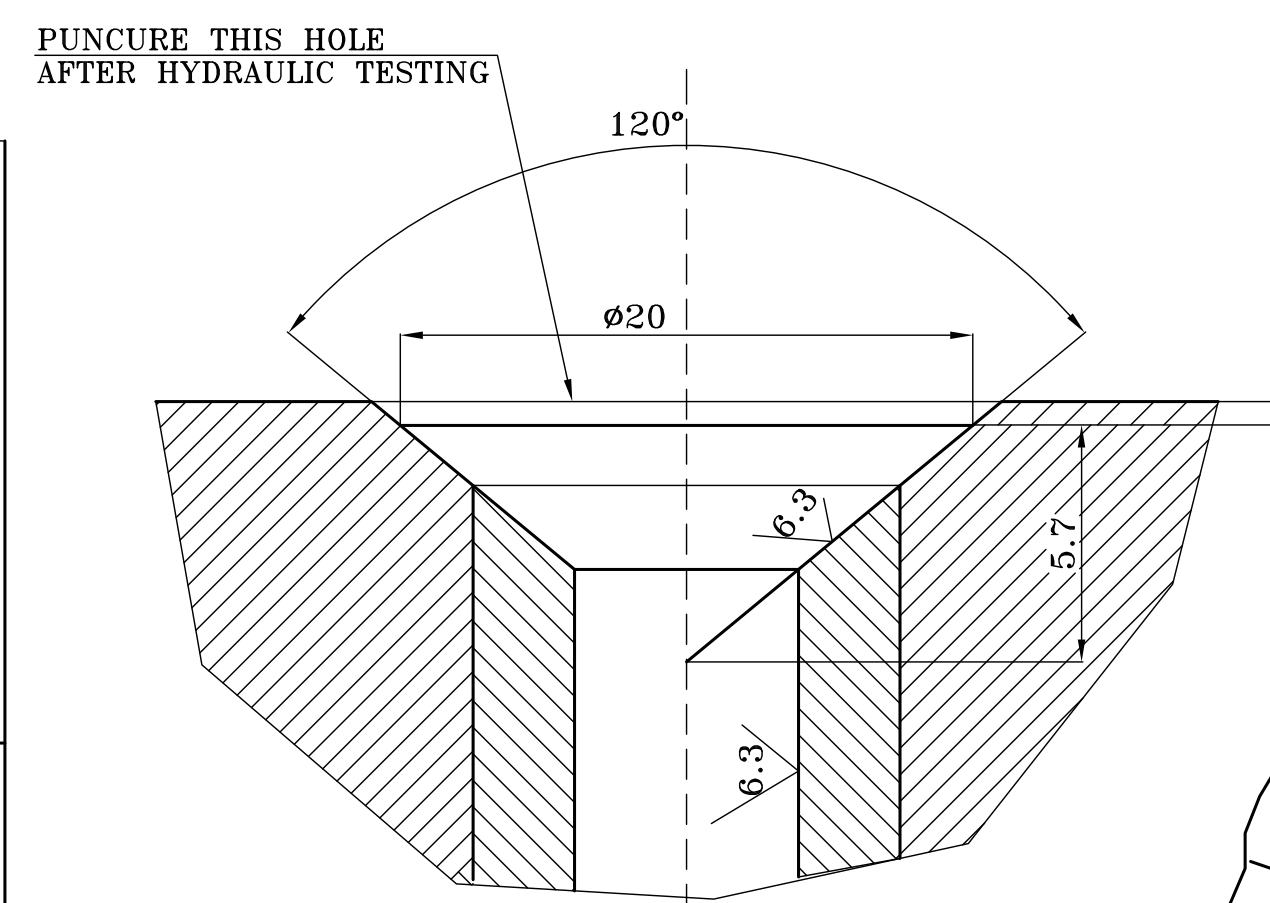
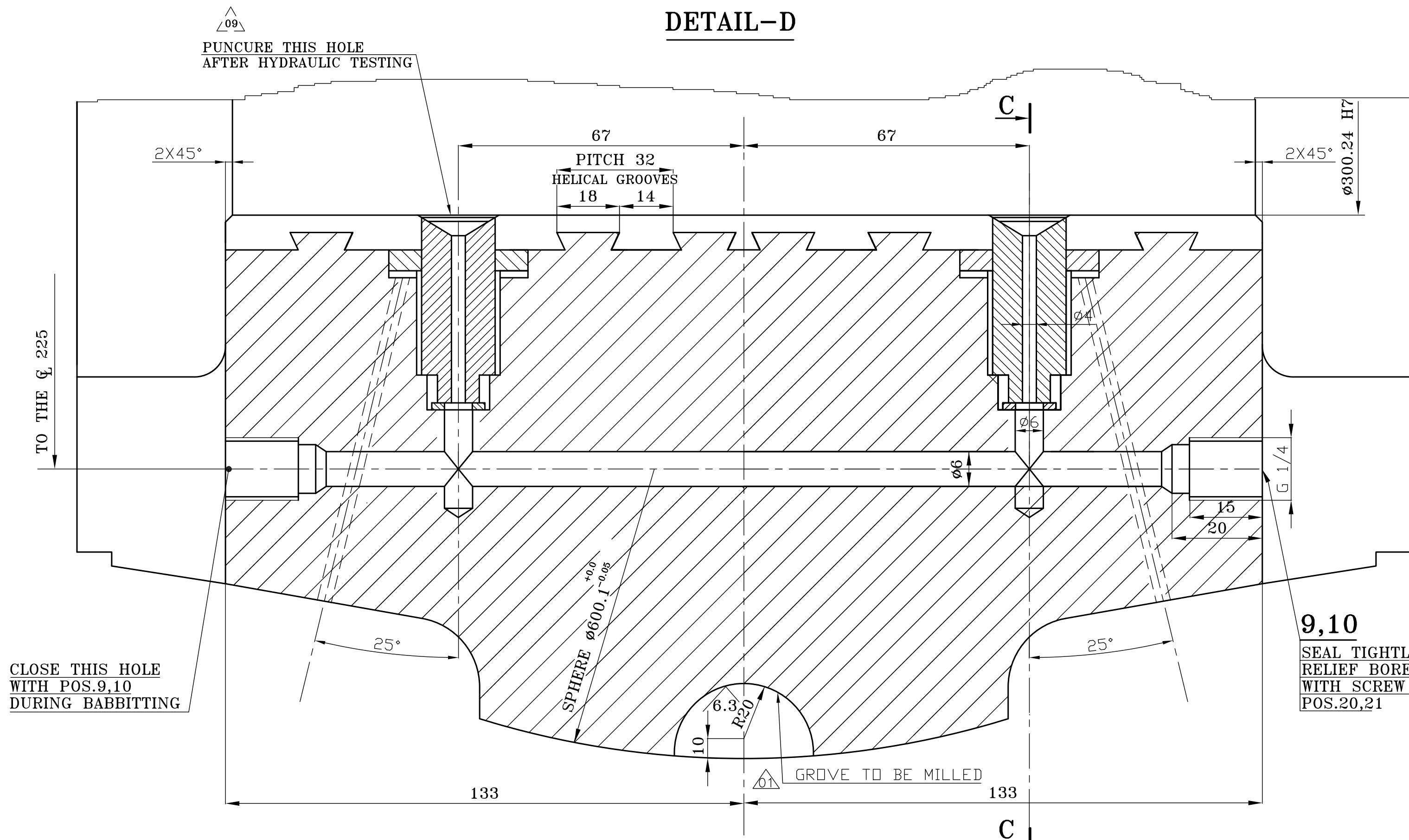
THE CLEARANCES IN LOWER PORTION OF THE BEARING SHELL ARE TO BE OBTAINED BY A SPECIAL MACHINING OPERATION ON THE LOWER HALVES AS PER FIG. 5



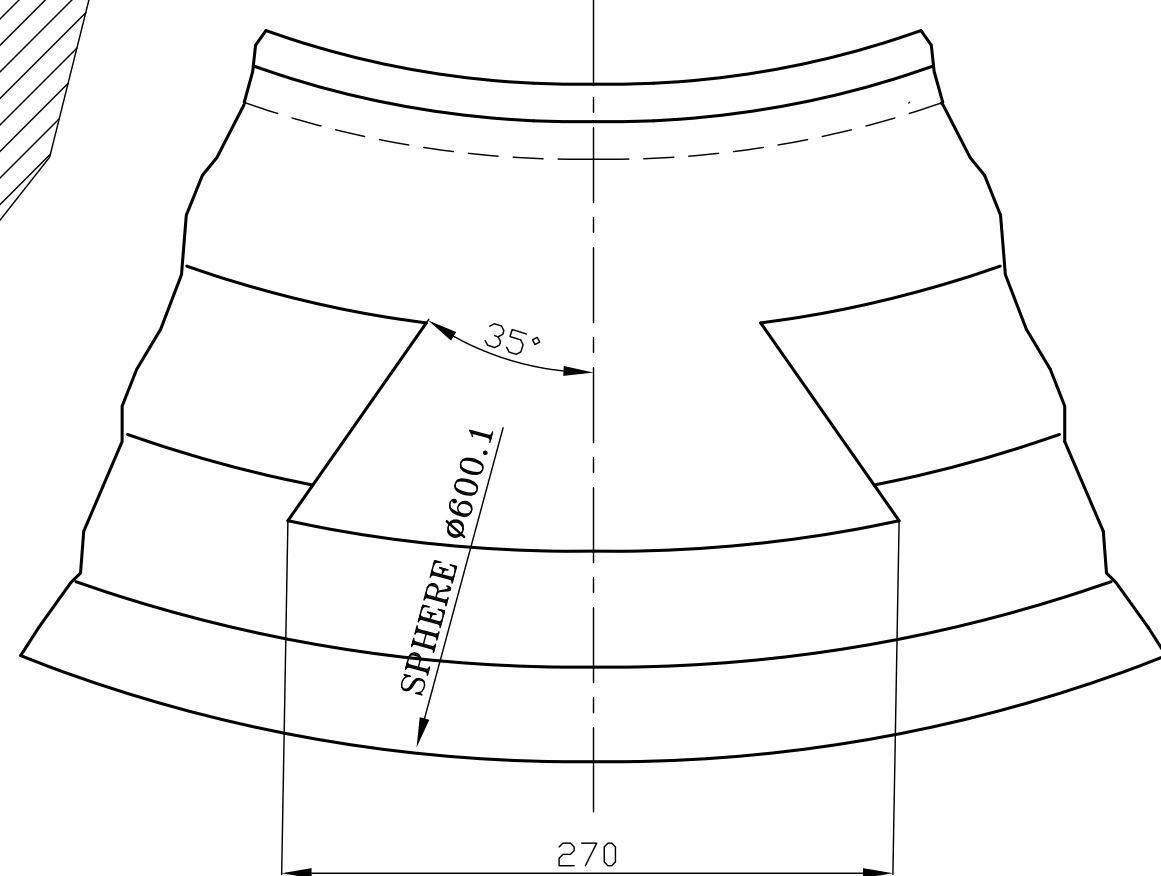
SECTION J-J



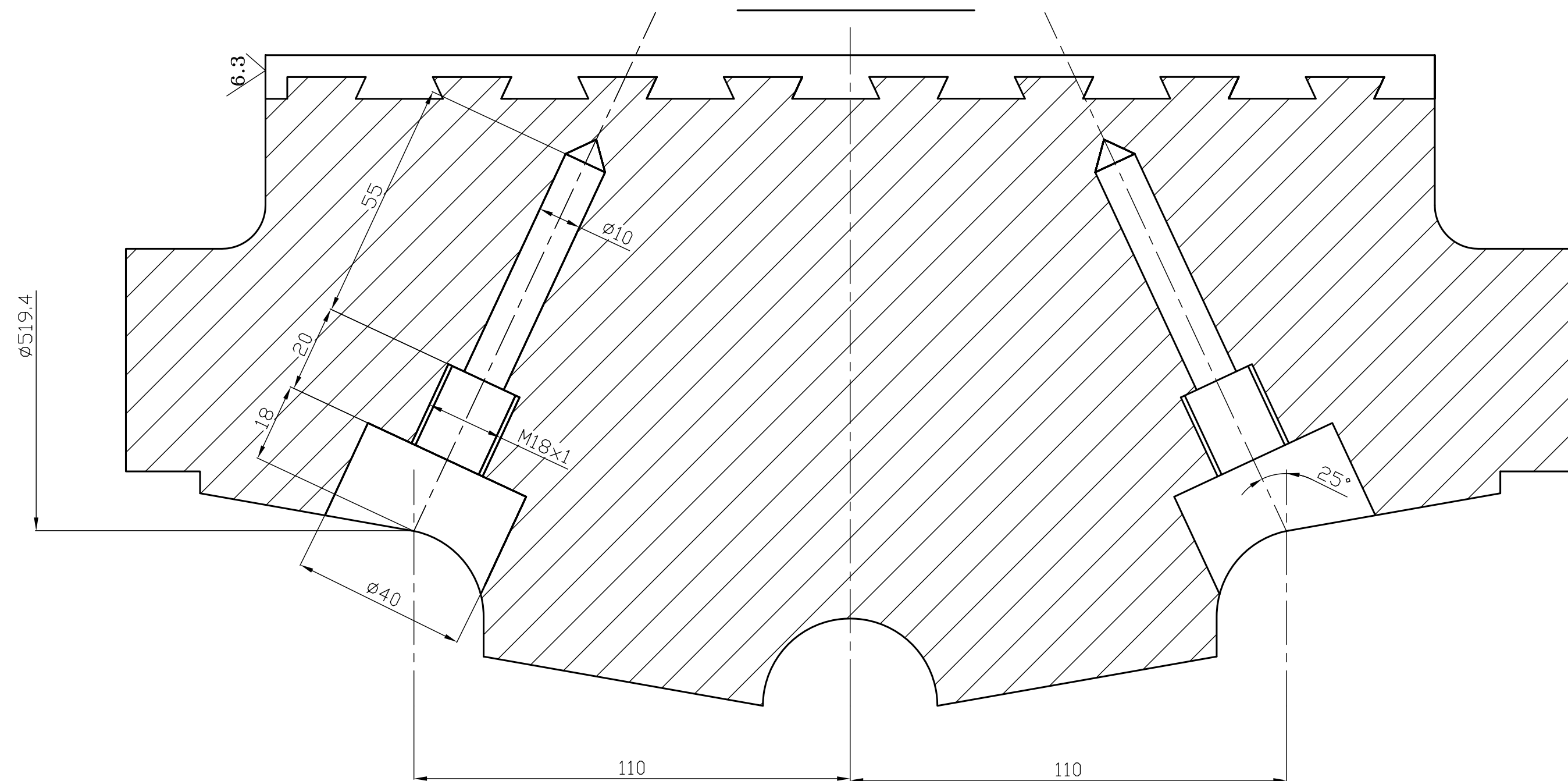
SECTION K-K



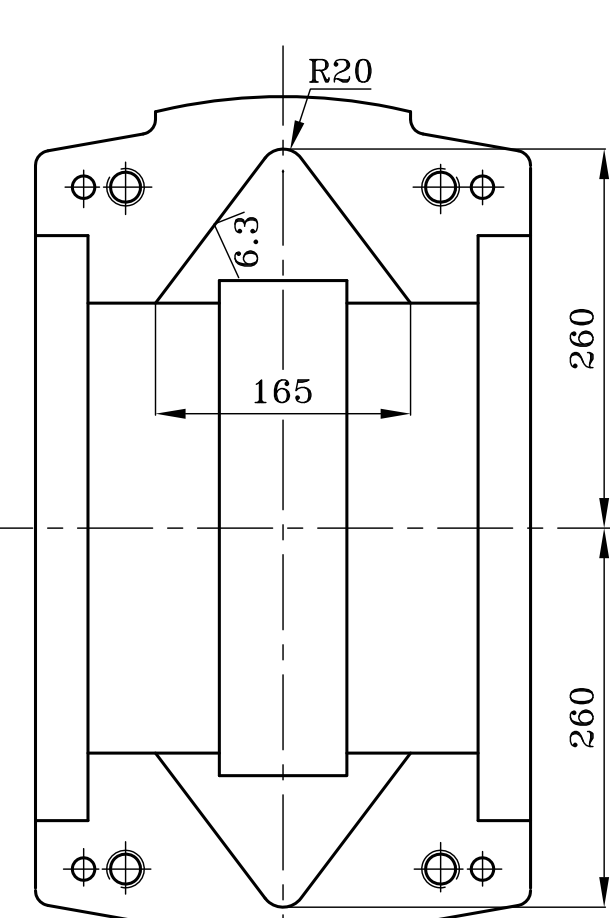
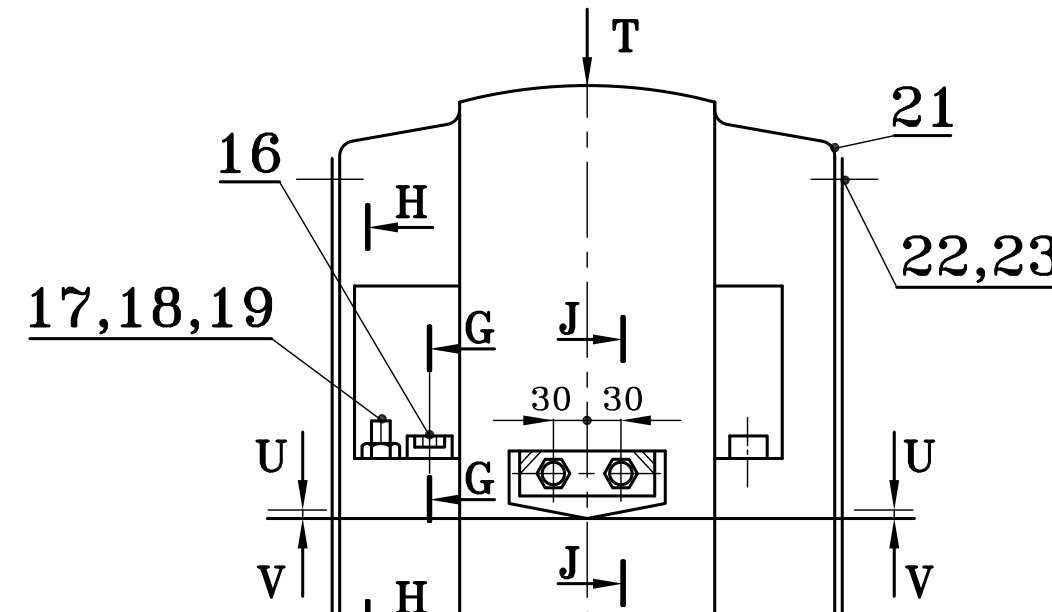
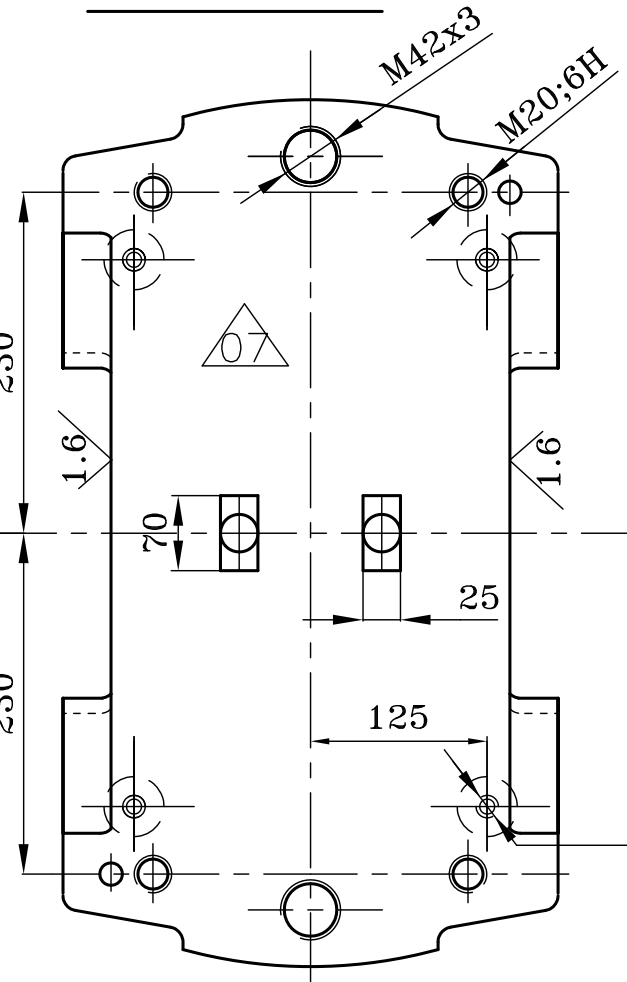
VIEW-R



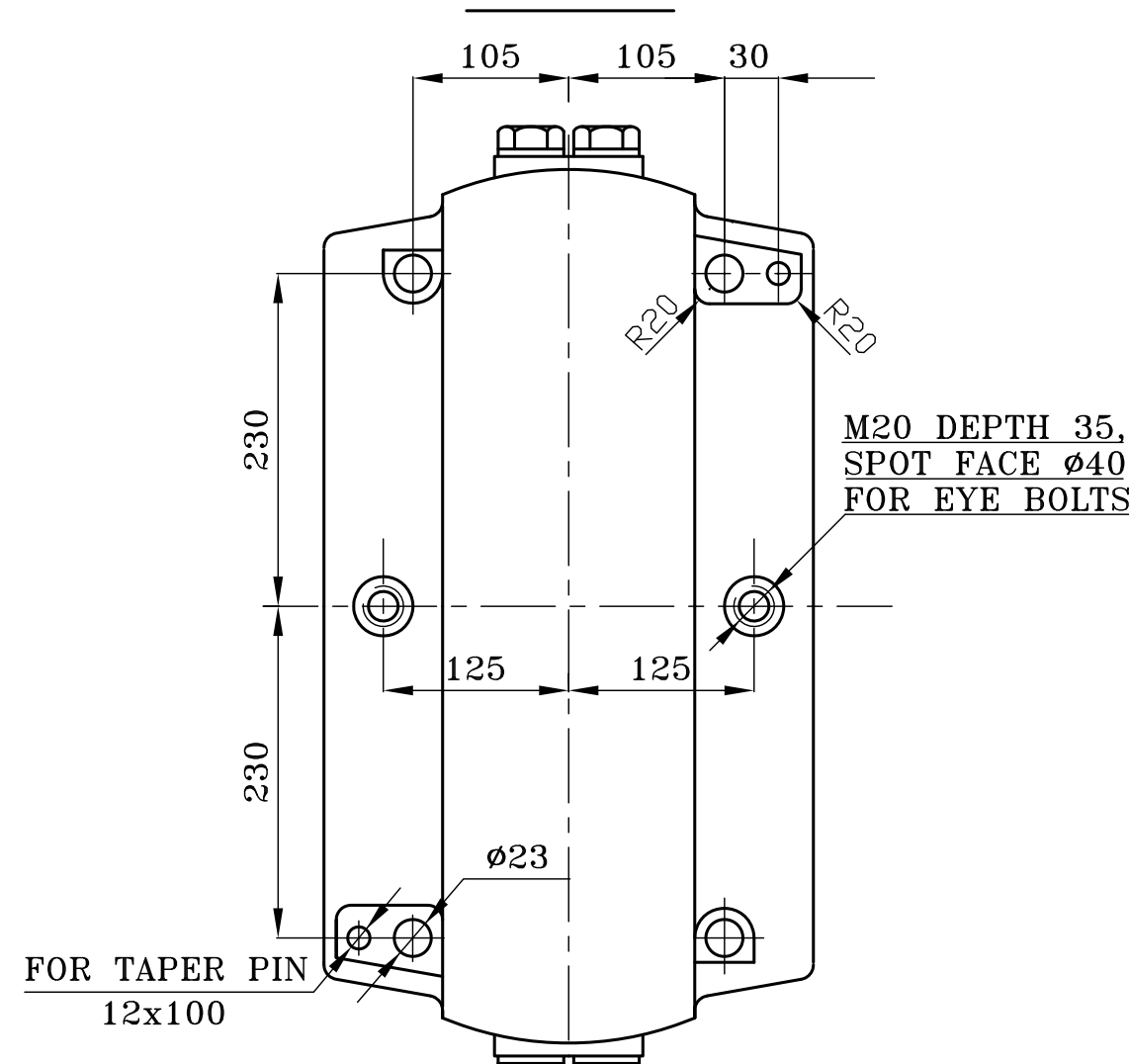
SECTION N-N



VIEW V-V



VIEW-T



REMARKS:

- | | |
|--|--|
| 1. MATERIAL OF SHELL CASTING | : HY 19566 |
| 2. BABBIT SPECIFICATION | : HY 12861 |
| 3. VISUAL EXAMINATION OF BABBIT SURFACE | : HY 0850174 |
| 4. BABBIT BOND TESTING | : HY 0850174 |
| 5. D.P. CHECK ALL EDGES | : NO EDGES DEFECTS PERMITTED (AA0550131) |
| 6. PAINT ALL UNMACHINED SURFACES 1x0 (AS PER HY 0674162) | |
| 7. PRESERVATION BEFORE DESPATCH | : ALL MACHINED SURFACES AS PER |

REFERENCE DRG:01390131014 REV01,02

	BEARING SHELL				ASSEMBLY	402	420
						2	
ITEM NO.	DESCRIPTION	DRAWING NO.	VAR. NO.	RAW MATERIAL SIZE OR CASTING DRG. NO. OR FORGING DRG. NO.	MATERIAL CODE	NET WT.	GROSS WT.
					MATERIAL SPECN.	QUANTITY	

THE FOLLOWING CONDITIONS APPLY
EXCEPT OTHERWISE STATED....

TYPE OF PRODUCT WO 1028500100,1028500200,1028500300
NAME OF CUSTOMER/PROJECT TARI 030 26D

TARI 950-36P	
NAME	SIGN.

4724537	BHARAT HEAVY ELECTRICALS LIMITED	DRN.	PRAVALLIKA
03/181	HYDERABAD	CHD.	VVB SWAMY

					APPD.	KCPANDA	
DEPT.	UNIT	DIMS	CR		WEIGHT (KG)	000 00 000 000	

EME	QTY	UNIT	SCALE	WEIGHT (KG)	REF. TO ASSY DRG.
CODE	125	1/4"	NTS	402	1-139-01-31026

TITLE	CARD CODE	DRAWING NO.
		0 120 01 21

BEARING SHELL	NA	0-139-01-31	
		SHEET NO. 1	NO OF

	15	16
--	----	----

This Drawing is printed from Engineering Digital Archive System
Therefore signatures are not essentially