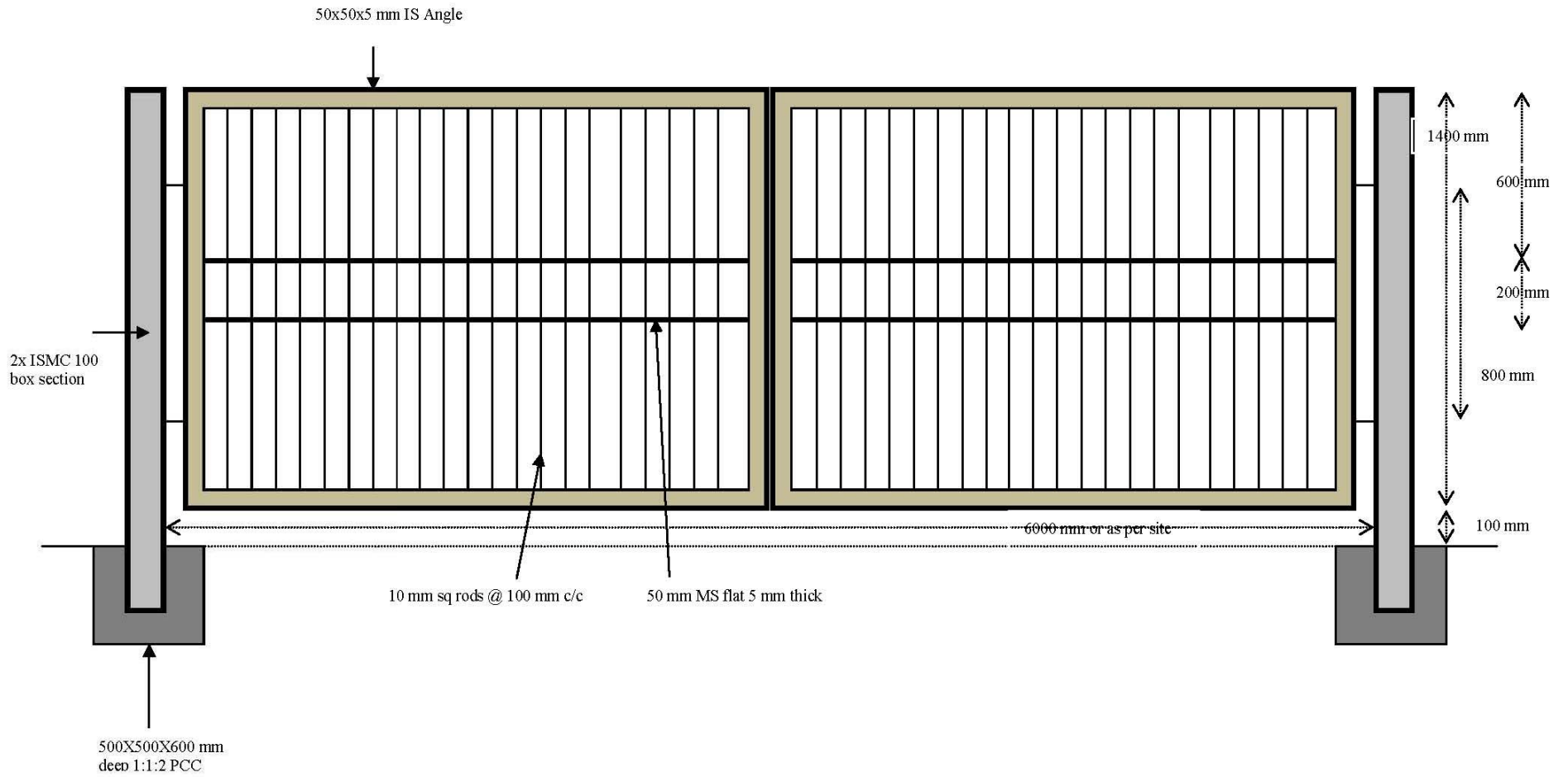
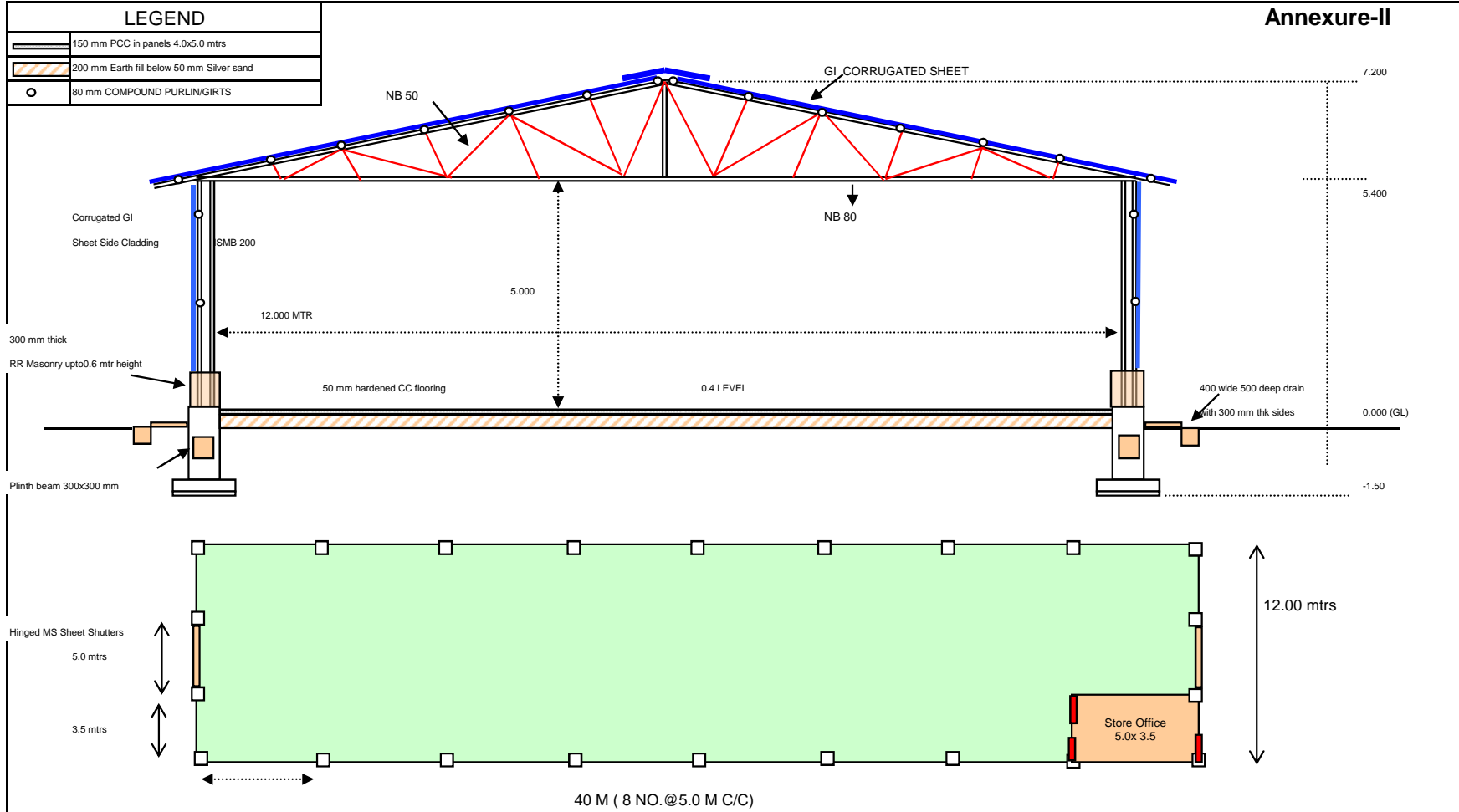


MS GATE DETAILS



NOTE: All anchors, hooks, bolts, slider bolts, locking arrangement, guides, etc although not specifically shown in the drawing but shall be provided by the contractor as per standard practice and directions of Engineer I/C

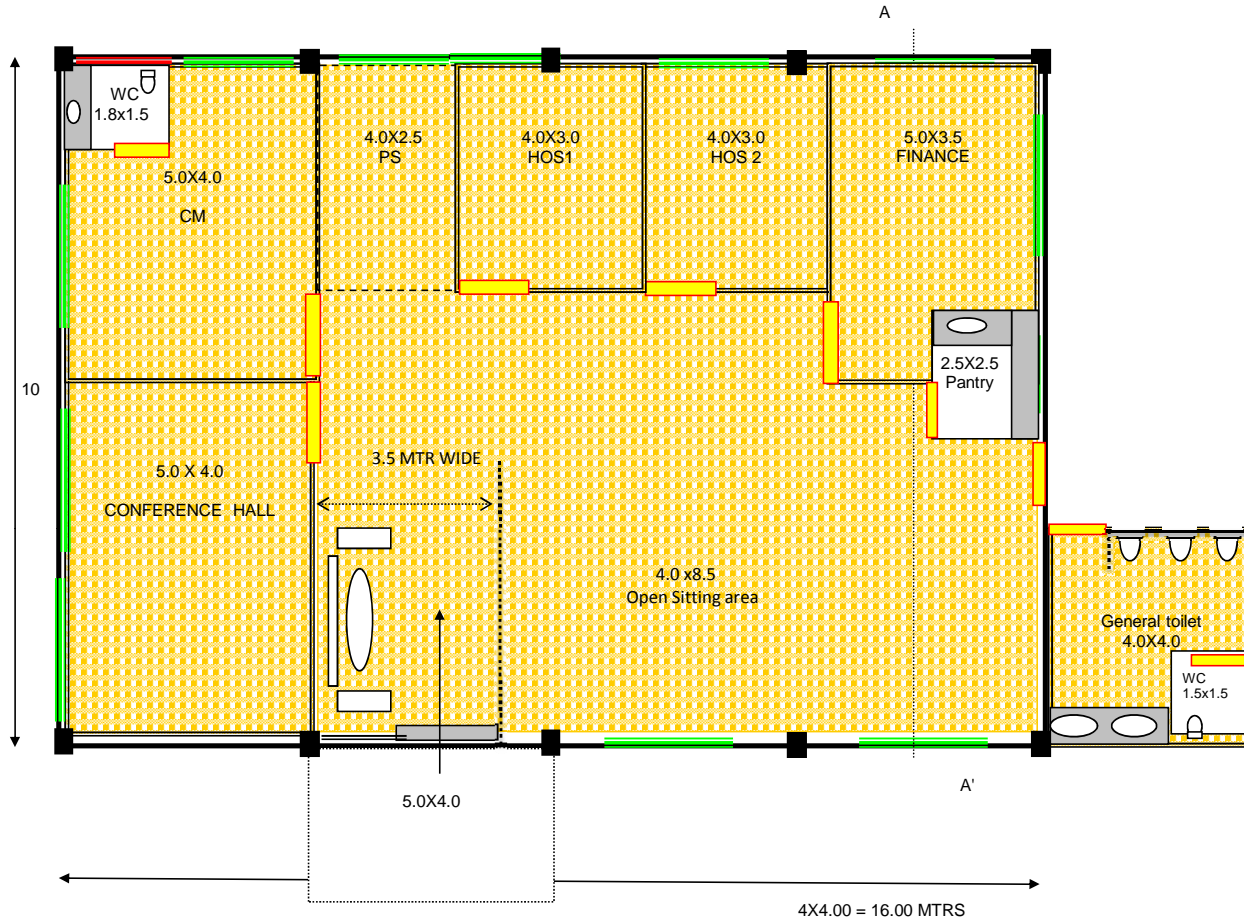
Annexure-II







बी एच ई एल
BHEL
 Power Sector - Northern Region
 Bharat Heavy Electricals Ltd.

PROJECT:		TITLE: GA DRG FOR STORE		REV	DATE
ENABLING WORKS AT SALMA		Made by	KSB	OO	02.03.2009
DRG. NO.:SALMA/SITE/002	Rev	oo	Checked by		
			Approved by		

SALMA DAM SITE OFFICE LAYOUT



-  MS glazed windows (2.0x1.2, 1.5x1.2, 1.0x1.2)
-  Ventilators (0.5 mtr ht.)
-  Doors (2.0x2.1, 1.5x2.1, 1.2x2.1, 1.0x2.1, 0.75x2.1)
-  AL glazed doors

 **Power Sector - Northern Region**
Bharat Heavy Electricals Ltd.

PROJECT:	INFRASTRUCTURE FACILITIES AT SALMA DAM, AFGHANISTAN
DRG. NO.:	SAL/OFF/001
Rev	0

TITLE: SALMA DAM SITE OFFICE			
Made by	KSB		
Checked by			
Approved by			

DATE	07.05.2011
-------------	------------