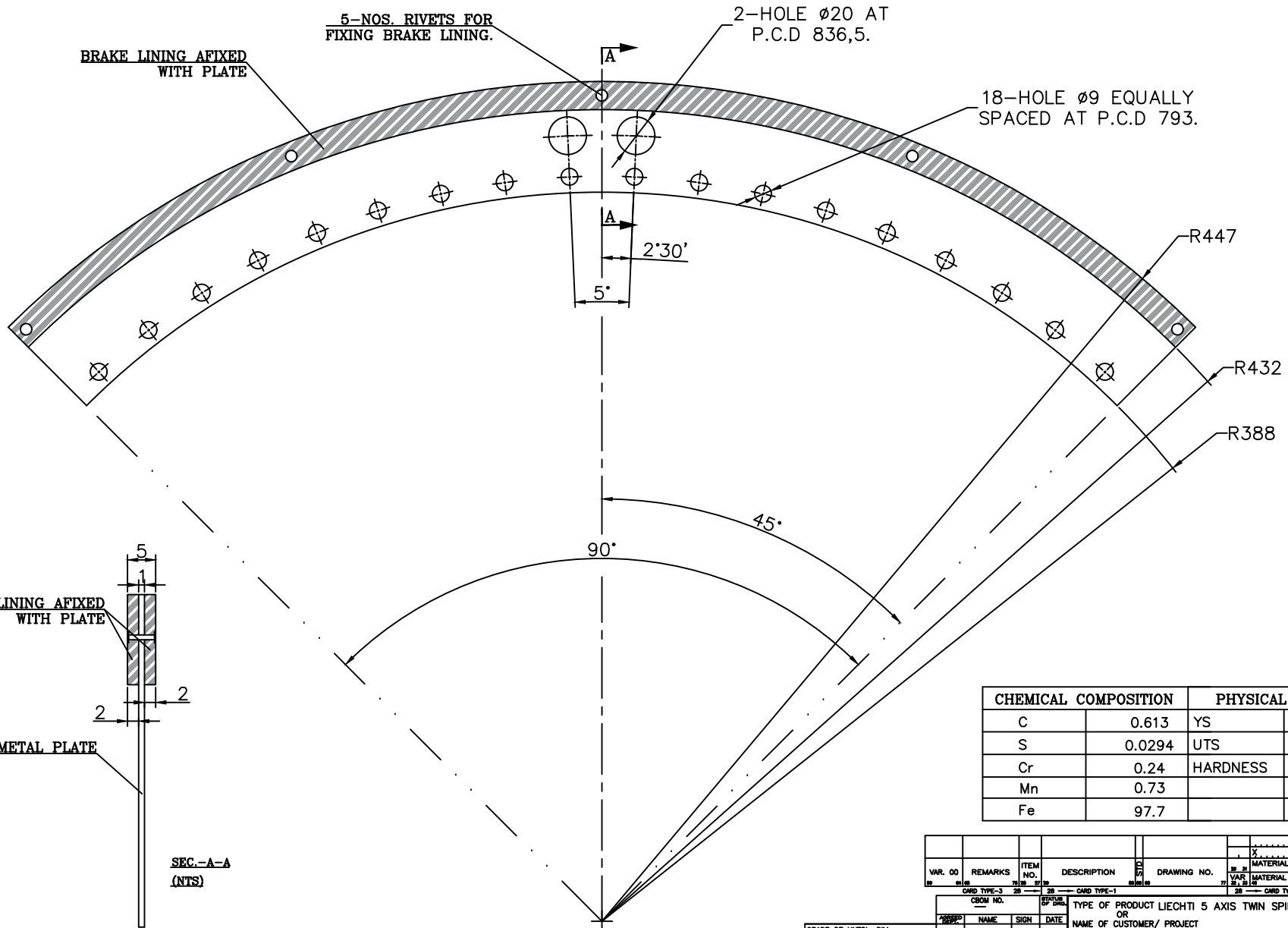


DRAWING NO. GMILL550-SP-31

THE REST



CHEMICAL COMPOSITION		PHYSICAL PROPERTY	
C	0.613	YS	1059 N/mm2
S	0.0294	UTS	1519 N/mm2
Cr	0.24	HARDNESS	45-48 Hrc
Mn	0.73		
Fe	97.7		

VAR. NO.	REMARKS	ITEM NO.	DESCRIPTION	DRAWING NO.	MATERIAL CODE	UNIT WEIGHT

CBON NO. TYPE OF PRODUCT LIECHTI 5 AXIS TWIN SPINDLE PLAN NO.-3-071  
 OR NAME OF CUSTOMER/ PROJECT BLOCK-XII

REV.	DATE	ALTERED	CHECKED

REV.	DATE	ALTERED	CHECKED

<b>BHARAT HEAVY ELECTRICALS LTD.</b> HARDWAR		NAME SIGN DATE
DEPT. WEX CODE/DESIGN	SCALE 1:1	WEIGHT (kg.) REF. TO ASSY. DRG.
TITLE BRAKE PLATE (B-AXIS)		DRAWING NO. GMILL550-SP-3100

21-B-4/892  
 SAMPLE REF. NO.  
 DATE  
 THE INFORMATION ON THE PACKAGING MATERIALS MUST BE KEPT AVAILABLE TO THE USER OF THE PRODUCT.  
 IT MUST NOT BE USED AS A SUBSTITUTE FOR THE INSTRUCTIONS TO THE USER OF THE PRODUCT.