

(ALL DIMENSIONS ARE IN mm.)

IT. NO.	ØE	ØF	G	FRAME	Wt (kg)	P
001	870	920	20	1R7631	2.55	103000
002	850	900	20	1R7636	2.47	103000
003	970	1020	20	1R7713	2.81	103000
004	830	880	20	1A7804	2.41	103000
005	860	910	20	1A7802	2.5	103000
006	980	1030	20	1R7717	2.84	103000
007	890	940	20	1R7634	2.6	103000
008	1010	1060	20	1A7902	2.97	103000
009	930	980	20	1R7714	2.8	103000
010	940	990	20	1R7713	2.48	103000
011	820	870	20	1A7804	2.4	
012	760	810	20	1A7804	2.3	
013	810	910	35	1A7804	9.5	538500
014	750	850	20	1A7804	4.8	349200
015	530	550	16	—	0.5	—
016	1120	1170	20	1A7925	3.23	103000
017	830	970	20	1A7906	7.13	313000
018	880	1020	35	1A7906	13.16	591000
019	1130	1180	20	1R7805	3.23	103000
020	740	860	20	1A7807	5.5	349200
021	790	910	35	1A7807	8.6	538500
022	1020	1070	20	1R7712	2.95	103000
023	1240	1290	20	1R1903-6	3.28	103000
024	1385	1540	35	1T7156	23	591000
025	1470	1620	35	1T7156	23	591000
026	1325	1375	20	1T7479	3.81	103000
027	1068	1168	35	1R7804	11.063	171000
028	1300	1470	35	1T74132	24.5	349200
029	1350	1540	35	1T74132	27.0	349200
030	1105	1155	20	1R1806-6	3.2	103000
031	1370	1540	35	1T74132	26.5	349200
032	1350	1440	35	1T74543	12.5	530000
033	1080	1160	35	1R7806	8.3	275000
034	935	1020	35	1R7718	8.22	414200
035	1370	1460	35	1T74543	13.5	530000
036	1090	1160	35	1R7806	6.70	275000
037	1050	1140	35	1R7806	9.0	171000
038	1440	1590	35	1T7156	21.4	591000
039	985	1035	20	1R1715-6	2.62	103000
040	1764	1844	20	1T78843-8	8.14	538500
041	1834	1914	20	1T78843-8	8.46	538500
042	1510	1590	20	1T76737-8	6.93	349200
043	700	724	12	1T74132	0.55	—
044	1390	1470	20	1DQ4342	6.80	538500
045	1450	1620	35	1T7156	26.1	591000
046	1045	1125	35	2R7716-4	8.22	171000
047	1744	1844	20	1T78843-8	10.26	538500
048	1814	1914	20	1T78843-8	10.66	538500
049	1350	1420	35	1T74543	9.00	530000

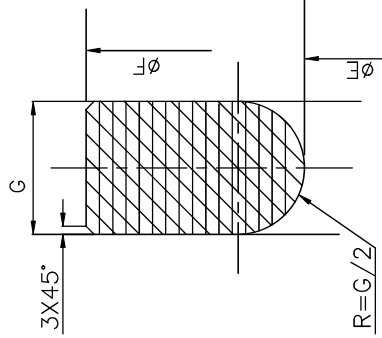
THE INFORMATION ON THIS DOCUMENT IS THE PROPERTY OF BHARAT HEAVY ELECTRICALS LIMITED. IT MUST NOT BE USED DIRECTLY OR INDIRECTLY IN ANY WAY DETRIMENTAL TO THE INTEREST OF THE COMPANY.



14194192043

DRG. NO.

IT. NO.	ØE	ØF	G	FRAME	Wt (kg)	P
001	910	960	20	1LA7905	2.43	103000
002	940	990	20	1LA7904	2.8	103000
003	870	1010	20	1RQ1713-2	7.2	103000
004	930	1060	35	1RQ1713-2	12.6	591000
005	1290	1340	20	1RQ1900-5	3.8	103000
006	950	1000	20	1MA7904	2.8	103000
007	930	980	20	1G73527	2.6	103000
008	900	1020	35	1SJ1713-2	11.2	591000
009	960	1060	40	1SJ1713-2	11.40	591000
010	1110	1160	20	1RR1803	3.0	103000
011	1260	1310	20	1RN1907-3	3.7	103000
012	1220	1270	20	1RR1903-6	3.5	103000
013	1280	1330	20	1RQ1900-5	3.8	103000
014	1020	1070	20	1DQ3735	3.2	103000
015	1160	1210	20	1SQ1905-4	3.30	103000
016	1200	1270	25	1SQ1905-4	6.1	103000
017	920	960	25	1LA7905-4	2.65	103000
018	960	1055	40	1RQ1716-2	10.0	591000
019	905	995	20	1RN7712-4	4.62	103000
020	1080	1145	20	1SJ7808-4	3.9	103000
021	1020	1070	20	1RQ7710-3	2.65	103000
022	1270	1320	20	1RQ7905-3	3.53	103000

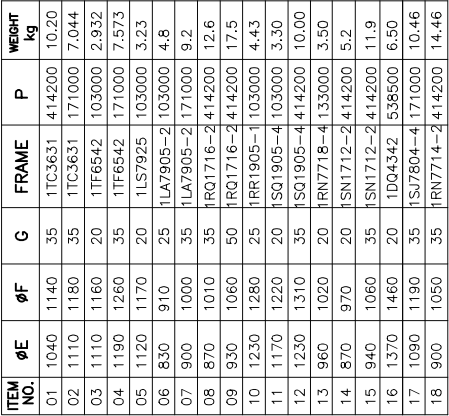


NOTES:-

- THE RING TO BE MOULDED USING SUITABLE FORMER TO GIVE THE SECTION AND DIAMETERS AS REQUIRED.
- THE RINGS TO BE MOULDED USING THE FOLLOWING MATERIALS-  
(a) GLASS 'E' CONTINUOUS GLASS FIBRE ROVINGS 30 OR 60 ENDS.  
(b) PLYESTER HYLAC RESIN HSR 8131 OF BAKELITE HYLAM.  
(c) HYLAC ACCELERATOT Q 8021 OF BAKELITE HYLAM(1.5% BY VOL.)  
(d) HYLAC CATALYST Q 8013 OF BAKELITE HYLAM (1% BY VOL.)
- AFTER POST CURING AT 100°C FOR 4 HRS THE MOULDED RINGS SHOULD HAVE 50% min. GLASS CONTENT.
- MAXIMUM PERMISSIBLE TOLERANCES ON NOMINAL INTERNAL DIA 'E' & VARIATION IN FLATNESS WHEN LAID ON A SMOOTH SURFACE ARE-  
BELOW 1000 mm RING ±1.5  
1000 TO 1500 mm RING ±2.5  
ABOV 1500 mm RING ±3.0
- SAMPLE MECHANICAL TESTING TO BE DONE ON 1 NO. RANDOMLY SELECTED RING IN EACH DELIVERY LOT.  
APPLY A LOAD OF (P/'E' DIA IN mm)/kgs  
AS SHOWN IN FIGURE FOR 10sec.  
NO CRACKING OR FLANKING IS PERMISSIBLE DURING ABOVE LOAD TESTING.
- ITEM NO. SHOULD BE CLERLY MARKED ON EACH RING FOR EASY IDENTIFICATION.

59	64	65	REMARKS	75	76	79	25	27	29	DESCRIPTION	58	59	60	DRAWING NO.	77	31	34	MATL. CODE	45	56	57	58	UNIT WT.	65	72	ZONE
VAR 00				VAR NO.	75	76	79	25	27	29					32	33	34	MATL. CODE	45	56	57	58	UNIT WT.	65	72	ZONE
				VAR NO.	75	76	79	25	27	29					32	33	34	MATL. CODE	45	56	57	58	UNIT WT.	65	72	ZONE
				VAR NO.	75	76	79	25	27	29					32	33	34	MATL. CODE	45	56	57	58	UNIT WT.	65	72	ZONE
				VAR NO.	75	76	79	25	27	29					32	33	34	MATL. CODE	45	56	57	58	UNIT WT.	65	72	ZONE
				VAR NO.	75	76	79	25	27	29					32	33	34	MATL. CODE	45	56	57	58	UNIT WT.	65	72	ZONE
				VAR NO.	75	76	79	25	27	29					32	33	34	MATL. CODE	45	56	57	58	UNIT WT.	65	72	ZONE
				VAR NO.	75	76	79	25	27	29					32	33	34	MATL. CODE	45	56	57	58	UNIT WT.	65	72	ZONE
				VAR NO.	75	76	79	25	27	29					32	33	34	MATL. CODE	45	56	57	58	UNIT WT.	65	72	ZONE
				VAR NO.	75	76	79	25	27	29					32	33	34	MATL. CODE	45	56	57	58	UNIT WT.	65	72	ZONE
				VAR NO.	75	76	79	25	27	29					32	33	34	MATL. CODE	45	56	57	58	UNIT WT.	65	72	ZONE
				VAR NO.	75	76	79	25	27	29					32	33	34	MATL. CODE	45	56	57	58	UNIT WT.	65	72	ZONE
				VAR NO.	75	76	79	25	27	29					32	33	34	MATL. CODE	45	56	57	58	UNIT WT.	65	72	ZONE
				VAR NO.	75	76	79	25	27	29					32	33	34	MATL. CODE	45	56	57	58	UNIT WT.	65	72	ZONE
				VAR NO.	75	76	79	25	27	29					32	33	34	MATL. CODE	45	56	57	58	UNIT WT.	65	72	ZONE
				VAR NO.	75	76	79	25	27	29					32	33	34	MATL. CODE	45	56	57	58	UNIT WT.	65	72	ZONE
				VAR NO.	75	76	79	25	27	29					32	33	34	MATL. CODE	45	56	57	58	UNIT WT.	65	72	ZONE
				VAR NO.	75	76	79	25	27	29					32	33	34	MATL. CODE	45	56	57	58	UNIT WT.	65	72	ZONE
				VAR NO.	75	76	79	25	27	29					32	33	34	MATL. CODE	45	56	57	58	UNIT WT.	65	72	ZONE
				VAR NO.	75	76	79	25	27	29					32	33	34	MATL. CODE	45	56	57	58	UNIT WT.	65	72	ZONE
				VAR NO.	75	76	79	25	27	29					32	33	34	MATL. CODE	45	56	57	58	UNIT WT.	65	72	ZONE
				VAR NO.	75	76	79	25	27	29					32	33	34	MATL. CODE	45	56	57	58	UNIT WT.	65	72	ZONE
				VAR NO.	75	76	79	25	27	29					32	33	34	MATL. CODE	45	56	57	58	UNIT WT.	65	72	ZONE
				VAR NO.	75	76	79	25	27	29					32	33	34	MATL. CODE	45	56	57	58	UNIT WT.	65	72	ZONE
				VAR NO.	75	76	79	25	27	29					32	33	34	MATL. CODE	45	56	57	58	UNIT WT.	65	72	ZONE
				VAR NO.	75	76	79	25	27	29					32	33	34	MATL. CODE	45	56	57	58	UNIT WT.	65	72	ZONE
				VAR NO.	75	76	79	25	27	29					32	33	34	MATL. CODE	45	56	57	58	UNIT WT.	65	72	ZONE
				VAR NO.	75	76	79	25	27	29					32	33	34	MATL. CODE	45	56	57	58	UNIT WT.	65	72	ZONE
				VAR NO.	75	76	79	25	27	29					32	33	34	MATL. CODE	45	56	57	58	UNIT WT.	65	72	ZONE
				VAR NO.	75	76	79	25	27	29					32	33	34	MATL. CODE	45	56	57	58	UNIT WT.	65	72	ZONE
				VAR NO.	75	76	79	25	27	29					32	33	34	MATL. CODE	45	56	57	58	UNIT WT.	65	72	ZONE
				VAR NO.	75	76	79	25	27	29					32	33	34	MATL. CODE	45	56	57	58	UNIT WT.	65	72	ZONE
				VAR NO.	75	76	79	25	27	29					32	33	34	MATL. CODE	45	56	57	58	UNIT WT.	65	72	ZONE
				VAR NO.	75	76	79	25	27	29					32	33	34	MATL. CODE	45	56	57	58	UNIT WT.	65	72	ZONE
				VAR NO.	75	76	79	25	27	29					32	33	34	MATL. CODE	45	56	57	58	UNIT WT.	65	72	ZONE
				VAR NO.	75	76	79	25	27	29					32	33	34	MATL. CODE	45	56	57	58	UNIT WT.	65	72	ZONE
				VAR NO.	75	76	79	25	27	29					32	33	34	MATL. CODE	45	56	57	58	UNIT WT.	65	72	ZONE
				VAR NO.	75	76	79	25	27	29					32	33	34	MATL. CODE	45	56	57	58	UNIT WT.	65	72	ZONE
				VAR NO.	75	76	79	25	27	29					32	33	34	MATL. CODE	45	56	57	58	UNIT WT.	65	72	ZONE
				VAR NO.	75	76	79	25	27	29					32	33	34	MATL. CODE	45	56	57	58	UNIT WT.	65	72	ZONE
				VAR NO.	75	76	79	25	27	29					32	33	34	MATL. CODE	45	56	57	58	UNIT WT.	65	72	ZONE
				VAR NO.	75	76	79	25	27	29					32	33	34	MATL. CODE	45	56	57	58	UNIT WT.	65	72	ZONE
				VAR NO.	75	76	79	25	27	29					32	33	34	MATL. CODE	45	56	57	58	UNIT WT.	65	72	ZONE
				VAR NO.	75	76	79	25	27	29					32	33	34	MATL. CODE	45	56	57	58	UNIT WT.	65	72	ZONE
				VAR NO.	75	76	79	25	27	29					32	33	34	MATL. CODE	45	56	57	58	UNIT WT.	65	72	ZONE
				VAR NO.	75	76	79	25	27	29					32	33	34	MATL. CODE	45	56	57	58	UNIT WT.	65	72	ZONE
				VAR NO.	75	76	79	25	27	29					32	33	34	MATL. CODE	45	56	57	58	UNIT WT.	65	72	ZONE
				VAR NO.	75	76	79	25	27	29					32	33	34	MATL. CODE	45	56	57	58	UNIT WT.	65	72	ZONE
				VAR NO.	75	76	79	25	27	29					32	33	34	MATL. CODE	45	56	57	58	UNIT WT.	65	72	ZONE
				VAR NO.	75	76	79	25	27	29					32	33	34	MATL. CODE	45	56	57	58	UNIT WT.	65	72	ZONE
				VAR NO.	75	76	79	25	27	29					32	33	34	MATL. CODE	45	56	57	58	UNIT WT.	65	72	ZONE
				VAR NO.	75	76	79	25	27	29					32	33	34	MATL. CODE	45	56	57	58	UNIT WT.	65	72	ZONE
				VAR NO.	75	76	79	25	27	29					32	33	34	MATL. CODE	45	56	57	58	UNIT WT.	65	72	ZONE
				VAR NO.	75	76	79	25	27	29					32	33	34	MATL. CODE	45	56	57	58	UNIT WT.	65	72	ZONE
				VAR NO.	75	76	79	25	27	29					32	33	34	MATL. CODE	45	56	57	58	UNIT WT.	65	72	ZONE
				VAR NO.	75	76	79	25	27	29					32	33	34	MATL. CODE	45	56	57	58	UNIT WT.	65	72	ZONE
				VAR NO.	75	76	79	25	27	29					32	33	34	MATL. CODE	45	56	57	58	UNIT WT.	65	72	ZONE
				VAR NO.	75	76	79	25	27	29					32	33	34	MATL. CODE	45	56	57	58	UNIT WT.	65	72	ZONE
				VAR NO.	75	76	79	25	27	29					32	33	34	MATL. CODE	45	56	57	58	UNIT WT.	65	72	ZONE
				VAR NO.	75	76	79	25	27	29					32	33	34	MATL. CODE	45	56	57	58	UNIT WT.	65	72	ZONE
				VAR NO.	75	76	79	25	27	29					32	33	34	MATL. CODE	45	56	57	58	UNIT WT.	65	72	ZONE
				VAR NO.	75	76	79	25	27	29					32	33	34	MATL. CODE	45	56	57	58	UNIT WT.	65	72	ZONE
				VAR NO.	75	76	79	25	27	29					32	33	34	MATL. CODE	45	56	57	58	UNIT WT.	65	72	ZONE
				VAR NO.	75	76	79	25	27	29					32	33	34	MATL. CODE	45	56	57	58	UNIT WT.	65	72	ZONE
				VAR NO.	75	76	79	25	27	29																

## BRACING RING



**SIZE A4**

ON

ATE

NO.	S
-----	---

# BRACING RING

File No. HEP-LEMOLEPL(MIS)/91/2026-HEP-LEM21700 (Computer No. 314584)

## FIRST ANGLE PROJECTION

ITEM NO.	ØE	ØF	G	FRAME	P	WEIGHT kg
19	1330	1420	35	1TT4945	530000	12.5
20	1070	1120	20	1RA7802	103000	3.10
21	1250	1300	20	1RR1903	103000	3.82
22	1160	1240	20	1SB1903	103000	3.5
23	1200	1310	45	1SB1903	414200	15.45
24	1240	1320	20	1DQ4134	103000	6.00
25	1080	1150	35	1LA7924	275000	8.00
26	1140	1180	20	1LA7924	103000	3.5
27	1270	1330	20	1RN1906	103000	4.20
28	1265	1315	20	1RA1906	103000	3.7
29	870	970	25	1RQ1712	414200	6.5
30	935	1040	35	1RQ1712	414200	10.3
31	1130	1180	25	1LS7925	103000	4.08
32	860	960	35	1LA7905	530000	9.00
33	1150	1190	20	1RQ1802	103000	2.43

**SIZE A4**

ON

ATE

NO.

# BRACING RING

~~0.~~