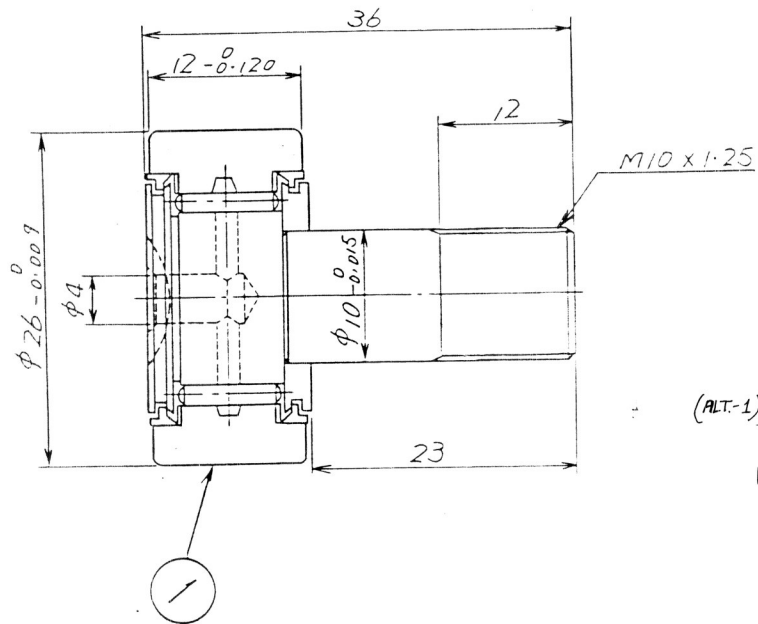


SYM.	REVISIONS	DATE	REVD.	CHKD.	RE. DWG.	MTR.	RE. MF.
1	MAKER'S NAME WITHDRAWN	22-6-94	NIL	SEE PAGE 1			



BASIC LOAD RATING	795 kgf
MAX ALLOWABLE LOAD	675 kgf
CLASS	JIS 0 CLASS

(ALT-1) ~~MAKER: VSK (JAPAN), TORRINGTON (USA)~~

NOTE:- MATERIAL - HIGH CARBON CHROMIUM BEARING STEEL
To JIS G 4805, Gr. SUJ-2.

MATERIAL COMPOSITION:- C - 0.95 to 1.10
Si - 0.15 to 0.35
Mn - 0.50 Max.
P - 0.025 Max.
S - 0.025 Max.
Cr - 1.30 to 1.60.

155

ITEM NO.	NEEDLE ROLLER BEARING	NO. OF PIECES PER MOTOR	4	NAME OF MATERIAL	SUJ 2	RAW MATERIAL	JIS G 4805	SPECIFICATION	RAW	FINISHED	REMARKS
DWN.	H. Kura	88-01-29	THIRD	TITLE	HS15250A						
CHKD.	H. Kura	88-02-05	ANG. PROJ.	NEEDLE ROLLER BEARING							
APPD.	H. Kura	88-02-05	SCALE	(FCRS-26)							
Hitachi, Ltd.				HITACHI WORKS DWG. NO.							
Tokyo Japan				10S813-678							
				REV D							
				1							

Signature Not Verified

Digitally signed by
GANESH TUDU
Date: 2022.07.28
11:55:09 +05'30'
Reason: IREPS-CRIS
Location: New Delhi