

388786/2024/HEP-TXM20500

Digitally signed by

SOURAV DHAR

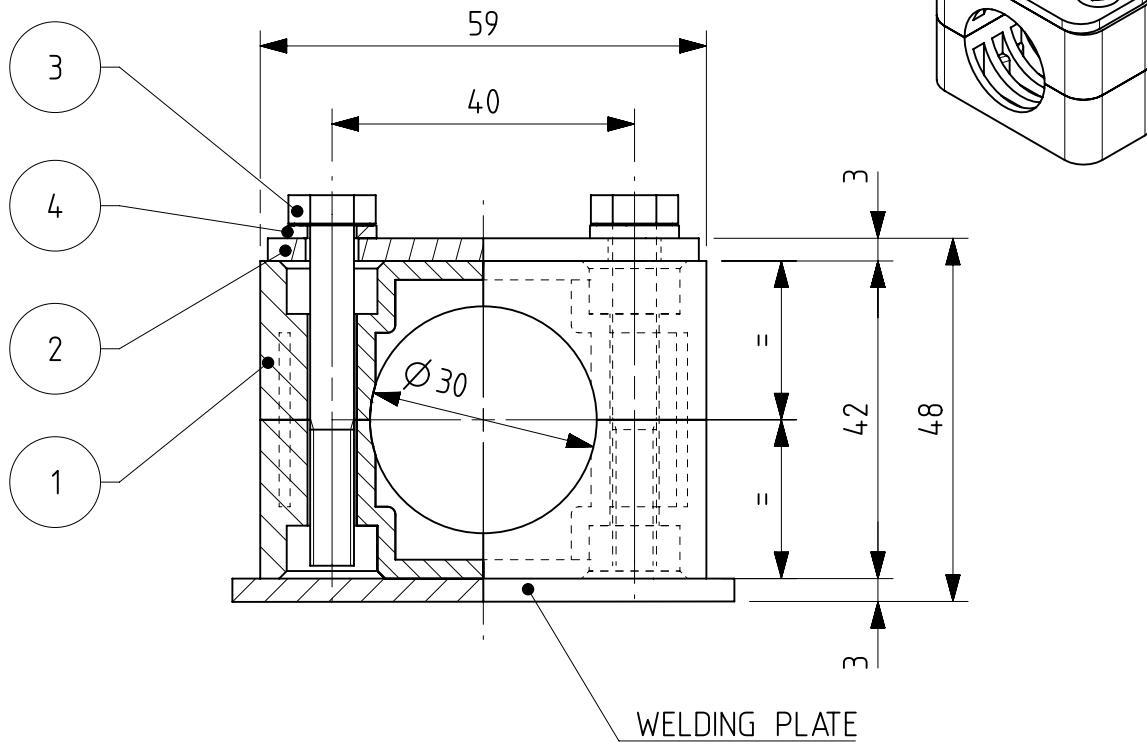
Date: 2023.07.22

11:57:39 IST

Reason: IREPS

Document

Location: IREPS-CRIS




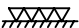
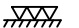
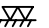

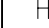
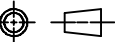
## NOTE:

- 1.EACH ASSY. SUPPLIED SHOULD BE BEAR FIRM'S IDENTIFICATION MARK AT SUITABLE LOCATION.
- 2.PACKING: THE MATERIALS SHALL BE SUITABLY PACKED SO THAT NO DAMAGE CAN ARISE DURING TRANSPORTATION.

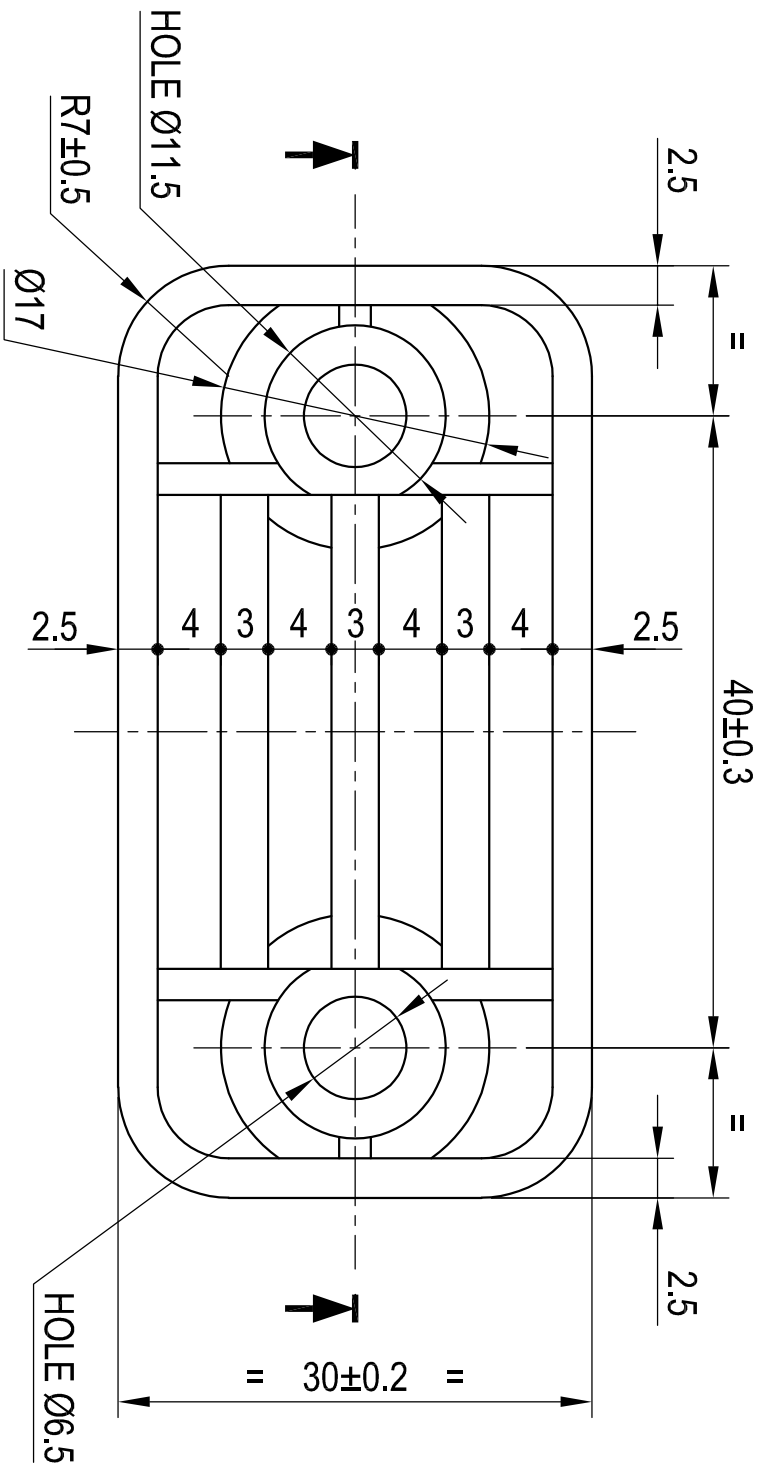
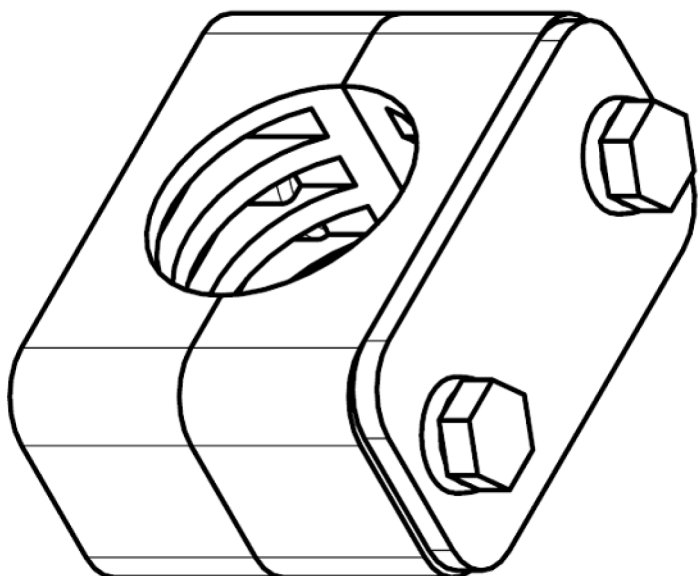
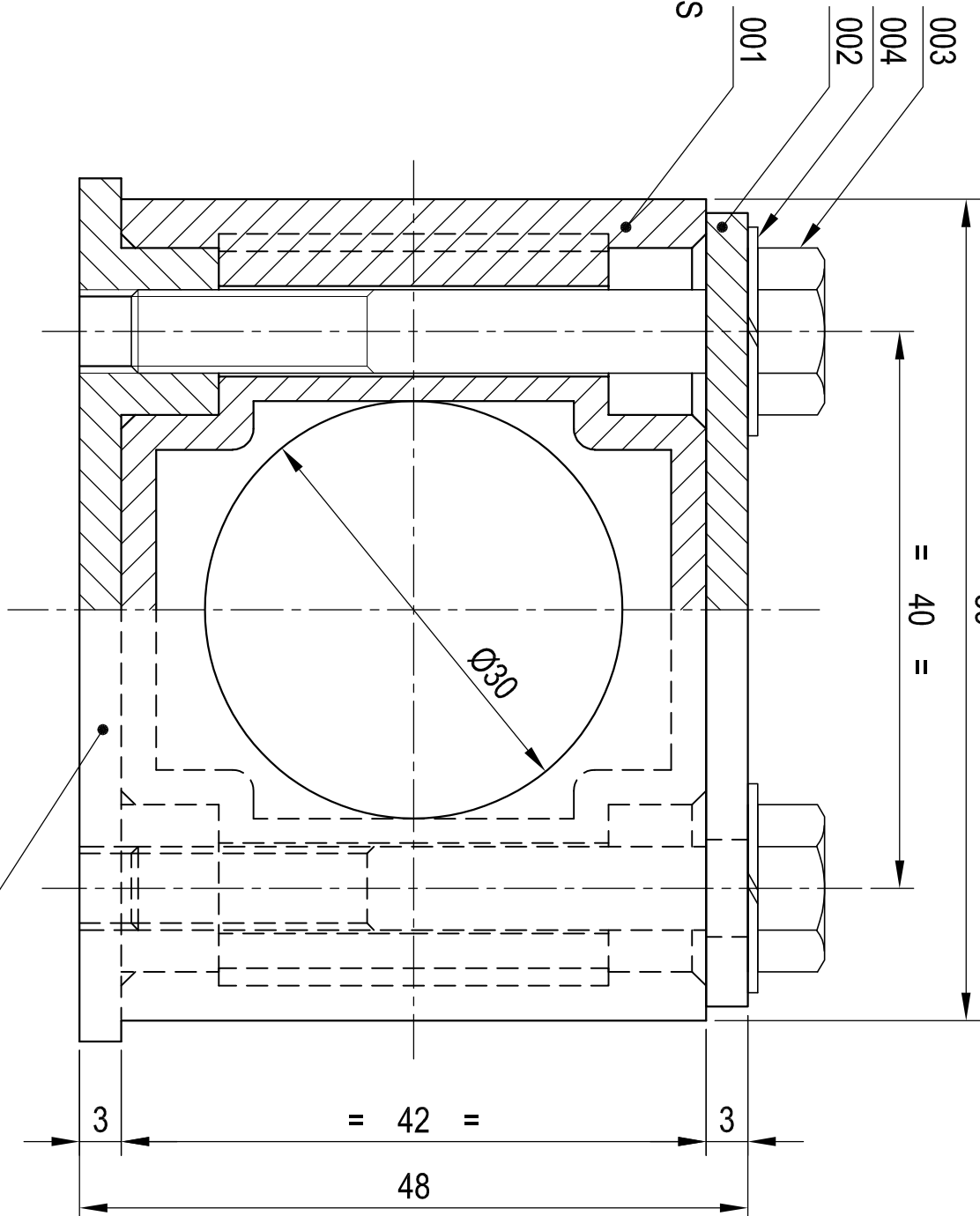
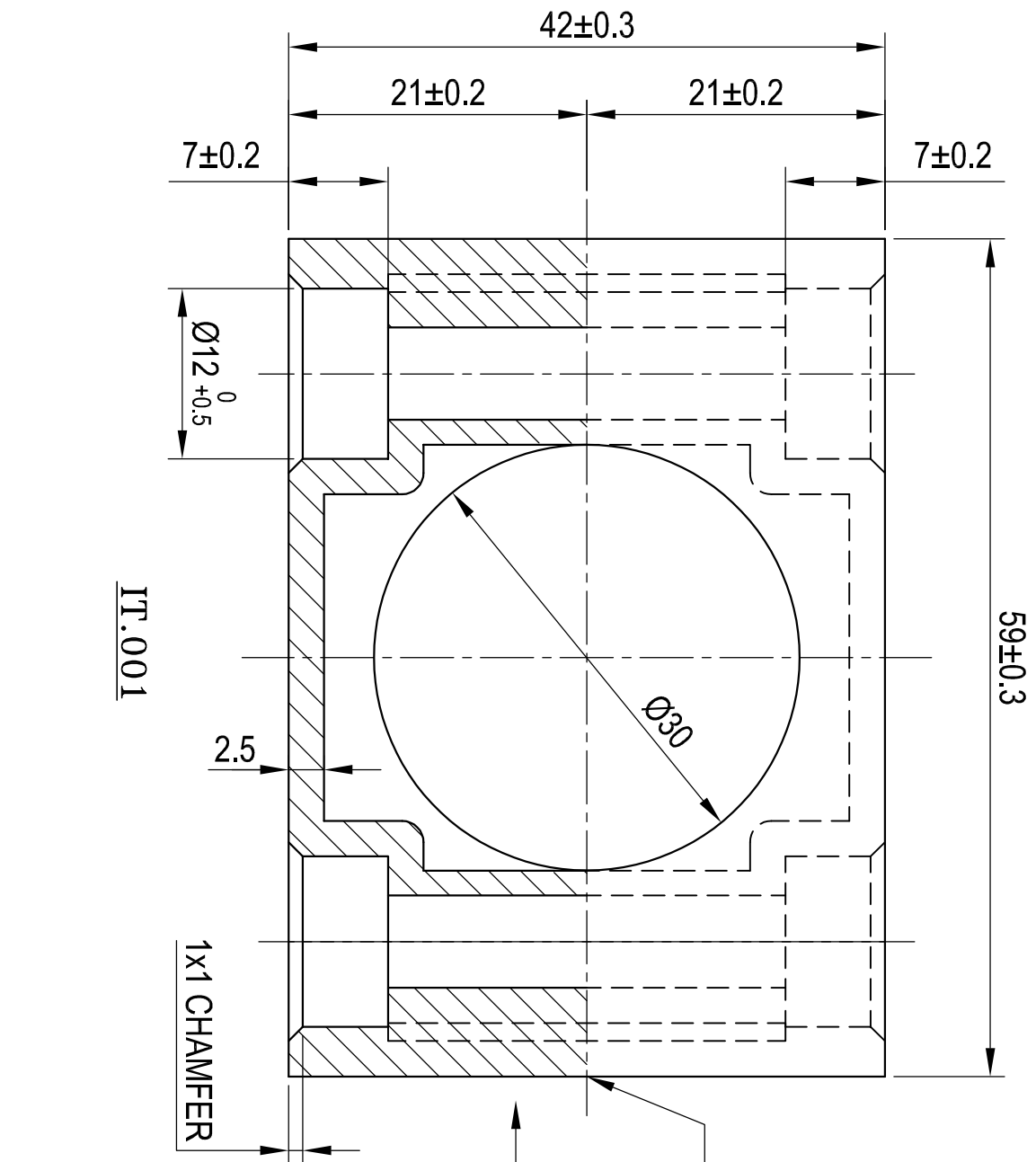
C&amp;D NO.: 5780/061

QTY/TM: 2 SETS

4	5780/064		SPRING WASHER B-6	2		IS:3063'94 ZN PLATED	
3	5780/063		HEX. HD. BOLT M6 x 45	2		IS:1364:92 ZN PT-2	
2	5780/062	4TWD.096.081	COVER PLATE	1			
1	5780/017	4TWD.096.071 ALT. 1	CLIP-30 (IN TWO HALVES)	1			
निर्देश संख्या	लागत एवं वितरण संख्या	अंग आरेखण संख्या	वर्णन	मात्रा	पदार्थ	विशिष्टि	प्रति भार कि. ग्रा.
REF. NO.	C&D NO.	PART DRG. NO.	DESCRIPTION	QTY./ SET	MATL	SPECN	WT. EACH IN K.G.

												अभिलिखित DGN				चितरंजन रेलइंजन कारखाना CHITTARANJAN LOCOMOTIVE WORKS, INDIA					
2	-	REDRAWN IN NX WITH 3RD ANGLE PROJECTION						16-12-09		जॉचा व.अ.अ.	Ravindra Kumar <small>Digitally signed by Ravindra Kumar DN: cn=2023.01.14 16:55:55 +05'30'</small>		पदार्थ MATL		प्रति भार कि. ग्रा. WT. EACH IN KG						
1	DY.CEE/TMD	DRAWING MODIFIED						18-12-98		CHD SSE	Kumar										
परिवर्तन संख्या ALT.NO.	प्राधिकार AUTHY	वर्णन DESCRIPTION						दिनांकित बाधक DATED INITIAL		समीक्षित स.वि.अ. / व.वि.अ. REVIEWED AEE / SEE	RISHAP CHAUDHARY <small>Digitally signed by Rishap Chaudhary DN: cn=2023.01.14 16:15:14 +05'30'</small>										
सतह - रूखाता का मान मा. 3073 / अ. मा. सं. 1302 <small>SURFACE ROUGHNESS VALUE TO IS:3073 / ISO:1302</small>		अनिर्दिष्ट सद्य - सीमा मा. : 2102 / अ. मा. सं. : 2788 UNSPECIFIED TOLERANCE TO IS : 2102 / ISO : 2768						TOL. CLS.		अनुमोदित उ.मु.वि.अ. APPROVED DYCEE	RANJAN KUMAR PRAMANIK <small>Digitally signed by Ranjan Kumar Pramanik DN: cn=2023.01.11 13:22:18 +05'30'</small>		वर्णन DESCRIPTION		CLIP ASSEMBLY IN TWO HALVES (WITHOUT WELDING PLATE)						
		धातु-वेल्डन चिह्न मा. : 813 / अ. मा. सं. : 2553 WELDING SYMBOLS TO IS:813 / ISO:2553								दिनांक DATE	07-08-20										
पदांक GRADE NO.	सं1 N1	सं2 N2	सं3 N3	सं4 N4	सं5 N5	सं6 N6	सं7 N7	सं8 N8	सं9 N9	सं10 N10	सं11 N11	सं12 N12	रैखिक अनुपात SCALE	1:1		आरेखण संख्या DRAWING NO.					
Rz	0.16-0.3	0.5-0.7	0.9-1.1	1.5-2.0	2.5-3.8	5.0-6.3	9.0-12	16-25	30-40	50-63	75-100	160-250			4TWD.096.082						
Ra μm	0.025	0.05	0.1	0.2	0.4	0.8	1.6	3.2	6.3	12.5	25	50									
चिह्न SYMBOL													संदर्भ / REF. HZN402804 ALT.-				परिवर्तन संख्या ALTERATION. NO.	2	पृष्ठ SHEET	1 OF 1	A4

THE INFORMATION ON THIS DOCUMENT IS THE PROPERTY OF BHARAT HEAVY ELECTRICALS LIMITED.  
IT MUST NOT BE USED DIRECTLY OR INDIRECTLY IN ANY  
WAY DETRIMENTAL TO THE INTEREST OF THE COMPANY.



1. MATERIAL : PLASTIC(POLYPROPYLENE) COLOUR-GREEN.  
TEMPERATURE RESISTANCE : -40°C TO +120°C.
2. EACH ASSY. SUPPLIED SHOULD BEAR FIRM'S IDENTIFICATION MARK AT SUITABLE LOCATION.
3. PACKING: THE MATERIALS SHALL BE SUITABLY PACKED SO THAT NO DAMAGE CAN ARISE DURING TRANSPORTATION.

002		004	SPRING WASHER B-6						0.01	
						IS:3063'94 ZN PLATED				
002		003	BOLT HEX. M6x45-8.8				US:1364 PT-2 92 ZN PLATED		0.05	
001		002	COVER PLATE		44451264054					
001		001	CLIP-30 (IN TWO HALVES)		-		-		0.05	
59	64 65	75 76 78 25 27 29		58 59	60	77 29 31 34	55 56 57 58 59 60 61 62 63 64 65 66 67 68 69 70 71 72			
QTY VAR 00	REMARKS	VAR. NO.	ITEM NO.	DESCRIPTION	DRAWING NO.	VAR. VAR.	UNIT QTY.	ZONE		

The drawing shows a mechanical part with a central rectangular section and rounded ends. Key dimensions and features include:

- HOLE Ø11.5**: Two holes at the ends of the part.
- R7±0.5**: Radius dimension for the rounded ends.
- Ø17**: Diameter dimension for the central section.
- 2.5**: Thickness dimension of the central section.
- HOLE Ø6.5**: Two holes in the central section.
- 30±**: Total length dimension of the part.
- 4, 3, 4, 3**: Spacing dimensions between features.


**NOTES :-**

1. MATERIAL : PLASTIC(POLYPROPYLENE) COLOUR-GREEN.
2. TEMPERATURE RESISTANCE : -40°C TO +120°C.
3. EACH ASSY. SUPPLIED SHOULD BEAR FIRM'S IDENTIFICATION MARK AT SUITABLE LOCATION.
3. PACKING: THE MATERIALS SHALL BE SUITABLY PACKED SO THAT NO DAMAGE CAN ARISE DURING TRANSPORTATION.

REV.	DATE	ALT.	A.J.
02	16.11.22	CHK. ABHUIT	APD. R.C.

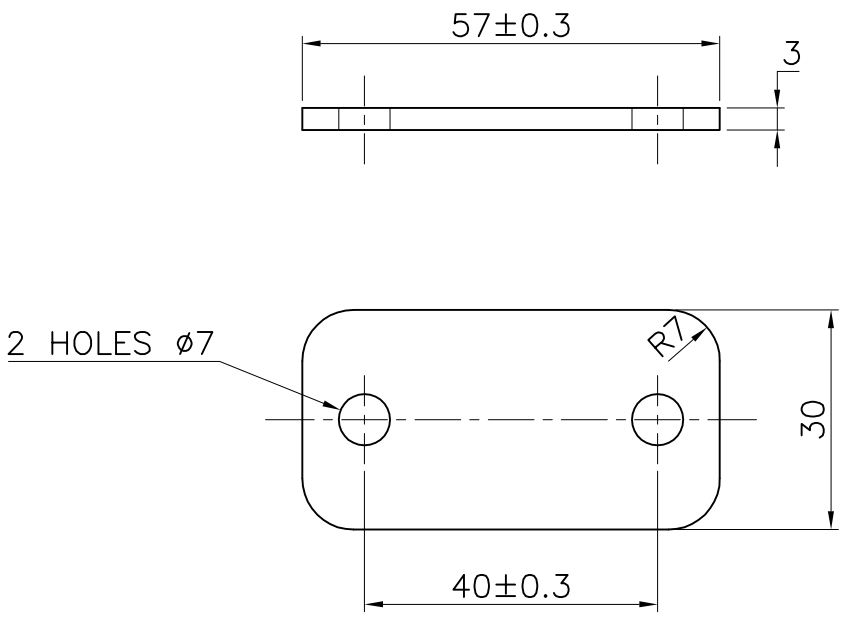
DRAWING DESCRIPTION CHANGED AND NOTE 2 & 3 ADDED AS PER CLW DRAWING.

QTY	VAR
59	64


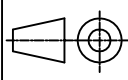
ADDITIONAL INFORMATION : 4TWD.096.082 ALT.02		TYPE OF PRODUCT OR		6 FRA 6068	
STATUS OF DRAWING :		NAME OF CUSTOMER/PROJECT		INDUCTION MOTOR	
DISTRIBUTION OF PRINTS : TME-1, TXM-3, TNX-1		 BHARAT HEAVY ELECTRICALS LTD. BHOPAL			
REV. DATE ALT. SDB		DEPT. TIME		SCALE WEIGHT	
01 10.10.19 CHK. ABHIJIT APPD. ABHIJIT		405		UNTOL. DIMS. GR. TM20079 Gr. 'M'	
ZONE REF. ASSY. ITEM NO. 024 WAS 014.		TITLE		CLIP ASSEMBLY IN TWO HALVES (WITHOUT WELDING PLATE)	
		DRAWDING NO.		REV.	
		3 445 10 64 051		02	
		SHEET NO. 01 NO. OF SHEET		01	

THE INFORMATION ON THIS DOCUMENT IS THE PROPERTY OF BHARAT HEAVY ELECTRICALS LIMITED. IT MUST NOT BE USED DIRECTLY OR INDIRECTLY IN ANY WAY DETRIMENTAL TO THE INTEREST OF THE COMPANY.

REV.	DATE	ALTERED	REV.	DATE	ALTERED	ADDITIONAL INFORMATION	4 TWD.96.081
		CHECKED			CHECKED		
		APPROVED			APPROVED		
			01	10.10.13		STATUS OF DRAWING	
			IN BOM WT. 0.04KG. WAS NOT ON.			DISTRIBUTION TME- 1, TXM-3 OF PRINTS TNX-1	



NOTE:—  
1. MATERIAL : STAINLESS STEEL – AISI-304

SEE NOTE-1	001	COVER PLATE				KG.	0.04	
REMARKS	ITEM NO.	DESCRIPTION	STD	MATL. CODE		A/C	UNIT	UNIT WT.
				MATL. SPECN.				QTY.
CARD TYPE 3 → 28		28 → CARD TYPE 1		28 →		CARD TYPE 2		
<div><div>बी.सच.ई.एल.</div><div></div><div>BHARAT HEAVY ELECTRICALS LTD. BHOPAL</div></div>			DRN.	NAME	SIGN	DATE	NO.OF VAR.	
			CKD.	DK	-sd-	07.9.10	-	
			APPD.	AS	-sd-	07.9.10		
DEPT. TME	UNTOL. DIMS. GR.		SCALE	WEIGHT(KG)	REF.TO ASSY.DRG.		ITEM NO.	NO.OF ITEM
CODE 405	AA0230208 GR.'M'		NTS	0.04	34451064051		001	001
TITLE				DRAWING NO.				REV
COVER PLATE				44451264054				01
6FRA6068				SHT.NO 01		NO.OF.SHT. 01		