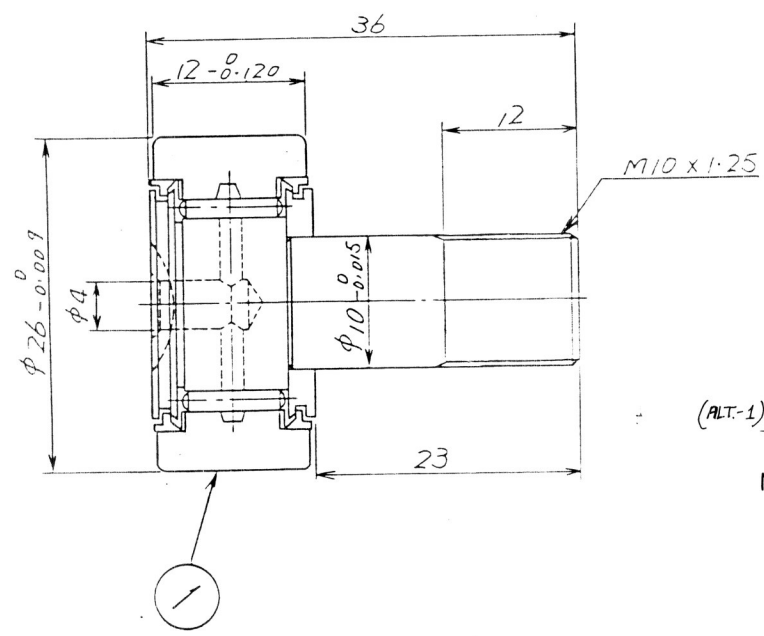


SYM.	REVISIONS	DATE	REVD.	CHKD.	RE. DWG	MTR	RE MF
1	MAKER'S NAME WITHDRAWN	22-6-94	NIL	SEE IT			



BASIC LOAD RATING	795 kgf
MAX ALLOWABLE LOAD	675 kgf
CLASS	JIS 0 CLASS

(ALT-1) ~~MAKER: VSK (JAPAN), TORRINGTON (USA)~~

NOTE:- MATERIAL - HIGH CARBON CHROMIUM BEARING STEEL  
To JIS G 4805, Gr. SUJ-2.

MATERIAL COMPOSITION:-  
C - 0.95 to 1.10  
Si - 0.15 to 0.35  
Mn - 0.50 Max.  
P - 0.025 Max.  
S - 0.025 Max.  
Cr - 1.30 to 1.60.

155

1		NEEDLE ROLLER BEARING	4	SUJ 2	JIS G 4805	NSK# FCRS-26	
ITEM NO.	PARTS NAME	NO. OF PIECES PER MOTOR	NAME OF MATERIAL	RAW MATERIAL	SPECIFICATION	RAW FINISHED	REMARKS
DWN.	H. Ihara	88-01-29	THIRD	TITLE HS15250A			
CHKD.	H. Ihara	88-02-05	ANG. PROJ.	NEEDLE ROLLER BEARING			
APPD.	H. Ihara	88-02-05	REGD. SCALE V.T.S.	(FCRS-26)			
Hitachi, Ltd. Tokyo Japan				HITACHI WORKS DWG. NO.		REV'D	
				10S813-678		1	

Signature Not Verified  
Digitally signed by GANESH TUDU  
Date: 2022.07.28 11:55:09 +05'30'  
Reason: IRLPS-CRIS  
Location: New Delhi