

Enquiry items along with quantities:

It. No.	Size & Item description	Technical requirement	Quantity in kg
1	0.75 mm tk X 1015 mm width	Cold Rolled Carbon Steel Coil to Spec. AA10115 Rev-09 (IS: 513 – GR D). Material Test Certificates Covering All the Mechanical and Chemical Properties to be furnished along with supply.	27500
2	0.75 mm tk X 1130 mm width X 1130 mm LG	Cold Rolled Carbon Steel Sheet to Spec. AA10115 Rev-09 (IS: 513 – GR D). Material Test Certificates Covering All the Mechanical and Chemical Properties to be furnished along with supply.	27500
3	0.75 mm tk X 970 mm width X 970 mm LG	Cold Rolled Carbon Steel Sheet to Spec. AA10115 Rev-09, (IS: 513 – GR D). Material Test Certificates Covering All the Mechanical and Chemical Properties to be furnished along with supply.	27500
4	0.2 mm tk X 280 - 400 mm width	Coil Cold Reduce Mild Steel Sheet Shims to Spec. AA10131 Rev-05. Material Test Certificates must be furnished along with each lot of delivery.	27500
TOTAL			110000 kg

Quantity variation as per below:

Item-1, Supplies quantity are to be restricted between 27500 kg & 25000 kg.

Item-2, Supplies quantity are to be restricted between 27500 kg & 25000 kg.

Item-3, Supplies quantity are to be restricted between 27500 kg & 25000 kg.

Item-4, Supplies quantity are to be restricted between 27500 kg & 25000 kg.

Pre-qualification criteria:

Sl. No.	Description of pre-qualification requirement	Vendor's Response	
		Complied (YES/NO)	Supporting Documents required to accept compliance
1	Offers are invited preferably directly from mill; however authorized trading houses may also quote. Authorized trading houses have to submit a supplying Mill's authority certificate for participating in the tender on the Mill's letter head duly signed by Mill's authorized signatory (with Full name, Designation, valid email, contact number & address) along with the offer. In the absence of the above authority letter, offer from stockiest/ trading houses are liable for rejection.		Certificate of being manufacturer (for manufacturer). Authorized dealer/ distributor have to Submit valid authorization letter from original manufacturer.
2	Offered cold/hot rolled steel sheets should comply to respective specification.		Clause-wise compliance of BHEL respective purchase specification or no deviation confirmation required.
3	Vendors have to furnish self-declaration for having manufacturing capacity to liquidate the supplies within agreed delivery schedule from PO date.		Self –Declaration is required
4	All correspondence and documents shall be in ENGLISH language. If any document provided by vendor is in any language other than English, it must be supported with its English translation.		Self –Declaration is required

Note-

1. BHEL has right to verify information / confirmation furnished by asking additional documents, proof etc.

ALL THE ABOVE POINT WISE PRE-QUALIFICATION REQUIREMENT ARE TO BE NECESSARILY ACCEPTED BY THE BIDDERS FOR THEIR OFFERS TO BE CONSIDERED FAILING WHICH OFFERS SHALL BE REJECTED.

MAKE IN INDIA format (to be filled by OeMs of the participating bidders)

BHARAT HEAVY ELECTRICALS LIMITED, BHOPAL

MATERIAL MANAGEMENT – STEEL DIVISION

For this Procurement, Government of India Public Procurement (Preference to Make in India), Order 2017 with its amendments and subsequent Orders issued by the respective nodal ministries shall be applicable even if issued after issue of this NIT but before finalization of contract/PO/WO against this NIT.

*As per the Provisions of this order, please submit **a self-certification complying with the conditions below on company letterhead duly signed by competent authority.***

I, hereby declare on behalf of M/s. that we are participating in the Enquiry No. floated by BHEL, Bhopal (MP), India and shall comply with following:

1. Public Procurement (Preference to Make in India), Order 2017 *with its amendments* and subsequent Orders issued by the respective nodal ministries shall be applicable even if issued after issue of this NIT but before finalization of contract/PO/WO against this NIT.

- (a) A supplier will be treated as **Class-I Local Suppliers**, if the items quoted by bidder have local content equal to or more than 50%.
- (b) '**Local Content**' means the amount of value added in India, which shall be total value of item quoted (excluding net domestic indirect taxes) minus the value of imported content in the item (including all custom duties) as a proportion of the total value, **in percent**.

2. I hereby declare that our firm qualifies as **Class-I Local Suppliers**.

a. The Local Content in the items quoted under this Enquiry is Percent

b. Details of location(s) in India where this value addition shall be done, is/are as follows:

- (a)
- (b)
- (c)

(.....)

For M/s.

(Seal & Sign)

Annexure-1

DECLARATION (To be given by Bidder)

GeM Bid No.....

Item Description:

With reference to above reference bid, we M/s..... (Bidder's Name)
confirm/declare the following.

1. Quoted Make-.....
2. We are OEM or Reseller -
3. Valid OEM Authorization certificate with OEM's Contact Details attached (In case of reseller)
- Yes / NA
4. We confirm Nil deviation from GeM bid document (NIT).

Note:

1. OEM details such as name, designation, address, e-mail Id and Phone number required to be furnished along with the technical bid. (also refer ATC clause).
2. Commercial Deviation/deviation in delivery shown separately or found hidden in the offer, will not be taken cognizance of.

(Vendor's Seal & Sign)



CORPORATE PURCHASING SPECIFICATION

AA 101 15

Rev. No. 09

PAGE 1 OF 7

COLD ROLLED CARBON STEEL SHEET, ANNEALED - DRAWING

1.0 GENERAL:

This specification governs the quality requirements of Cold Rolled Carbon Steel Sheet/Coil of drawing quality, Annealed and skin passed condition. Sheets having thickness of 0.40 to 3.15 mm (both inclusive) and widths upto 1250 mm are covered in this specification.

2.0 APPLICATION:

Suitable for Drawing/ Welding..

3.0 CONDITION OF DELIVERY:

Sheets/Coils : 0.40 mm to 3.15 mm thick, cold rolled, descaled and oiled sheet/coil shall be supplied in fully annealed and skin passed condition. The size, weight and packing of the coils/sheets shall be as agreed to between the manufacturer and BHEL for indigenous material. For imported material, it shall comply with clause 14.0.

Sheets shall be supplied in straight lengths or in coils as specified in BHEL order.

Sheets shall be flat and the edges cleanly sheared and truly squared to the specified dimensions.

Oils used for rust prevention shall be free from pungent smell. The following oils are suggested :

- a) SERVO RP 125 of M/s. IOC.
- b) RUSTOP 387/388 of M/s. HPC
- c) Bharat TCPF of M/s. Bharat Petroleum
- d) Any other TRP conforming to IS : 1154

Sheets shall have a matt surface finish and best surface appearance.

4.0 COMPLIANCE WITH NATIONAL STANDARDS:

- 4.1 Material shall comply with the requirements of IS:513-1994,
 Gr:D-Drawing, Temper: SP-Annealed & Skin passed;
 Quality; killed/semi killed; Surface type - Best;
 Surface finish : Matt.

Revisions :

Cl. 27.6.8 OF MOM OF MRC-S&GPS

APPROVED :

INTERPLANT MATERIAL RATIONALISATION
COMMITTEE-MRC (S&GPS)

Rev. No. 09

Amd.No.

Reaffirmed

Prepared
BHOPAL

Issued
Corp. R&D

Dt. of 1st Issue
JULY, 1976

Dt: 15.06.2005

Dt :

Year :



4.2 Material offered to DIN 1623-1983, Part 1, Gr : RRSt-13.03, (Material No. 1.0347) Surface appearance: Best surface - 05, Surface finish : Matt 'm', is also acceptable.

4.3 The tolerance on dimensions shall comply with DIN : 1541.

5.0 DIMENSIONS AND TOLERANCES:

5.1 Sizes:

Cold rolled carbon steel sheets/coils shall be supplied to the dimensions specified in BHEL order.

5.2 Tolerances:

The tolerances on sheets and coils shall comply with IS : 513 as detailed below:

5.2.1 Thickness:

Tolerances on thickness of sheets	
Nominal thickness, mm	Tolerance for nominal widths upto 1250 mm
-- 0.40	± 0.04
Above 0.40 up to 0.60	± 0.05
Above 0.60 up to 0.80	± 0.06
Above 0.80 up to 1.00	± 0.08
Above 1.00 up to 1.25	± 0.09
Above 1.25 up to 1.60	± 0.11
Above 1.60 up to 2.00	± 0.12
Above 2.00 up to 2.50	± 0.14
Above 2.50 up to 3.15	± 0.16

5.2.2 Width:

Width	Tolerance
Upto & Incl. 1250 mm	+ 7 mm - 0
Above 1250 mm	+ 10 mm - 0

5.2.3 Length:

Up to and incld. 2000 mm	+ 15 mm - 0
Over 2000 mm	+ 0.75 percent of length - 0



CORPORATE PURCHASING SPECIFICATION

AA 101 15

Rev. No. 09

PAGE 3 OF 7

5.2.4 Camber:

Camber is the greatest deviation of a side edge from a straight line, the measurement being taken on the concave side with a straight line. Camber tolerances are as specified below:

Coils - 20 mm in any 5000 mm length

Cut lengths - 0.4% x length.

5.2.5 Out-of Square Tolerance (for cut lengths) :

1 percent of the width.

(Out-of squareness is the greatest deviation of an edge from a straight line drawn at a right-angle to the other edge of the sheet, touching one corner and extending to the opposite edge).

6.0 MANUFACTURE :

Steel shall be manufactured by open-hearth, electric, basic oxygen or a combination of these processes.

Material shall be manufactured from semi killed/killed steel, preferably aluminum killed.

Rimmed steel is not acceptable.

7.0 FINISH:

Material shall have a medium or dull finish. Pores, roll marks or scratches which do not impair uniform appearance of the finished product are permissible. The sheets shall be free from waviness and the surface shall be ideal for spray painting.

8.0 HEAT TREATMENT :

Sheets and coils shall be fully annealed and skin passed.


9.0 FREEDOM FROM DEFECTS :

The material shall be free from harmful defects such as scale, rust, blisters, laminations, pitting, cracked edges, etc.

10.0 CHEMICAL COMPOSITION :

The melt analysis of steel and the permissible variation in the composition of the material from the melt analysis shall be as follows:

Element	Melt analysis, percent, max.	Permissible variation percent, max.
Carbon	0.12	0.02
Manganese	0.50	0.03
Sulphur	0.040	0.005
Phosphorus	0.040	0.005

AA 101 15	CORPORATE PURCHASING SPECIFICATION	
Rev. No. 09		
PAGE 4 OF 7		

11.0 TEST SAMPLES:

One bend test and hardness test shall be carried out from each lot of 5,000 kg of material or part thereof, per melt per consignment.

Where material of more than one thickness are rolled from the same melt, one additional bend test shall be made for each thickness.

Test pieces shall be cut so that the axis of the bend is parallel to the direction of rolling, viz., transverse direction.

12.0 MECHANICAL PROPERTIES :

12.1 Bend Test :

The test piece shall be capable of being bent cold through 180° close without showing sign of cracks or fracture on the outer convex surface.

Bend test shall be carried out in accordance with IS : 1599.

12.2 Hardness (VICKERS) :

When tested as per IS : 1501, the test pieces shall show a Vickers hardness as given below:

Upto & Incl. 1.25 mm, thick	:	115 HV, max.
Above 1.25 mm, thick	:	125 HV, max.

13.0 TEST CERTIFICATES:

Unless otherwise specified, three copies of test certificates shall be supplied.

In addition, the supplier shall ensure to enclose one copy of the test certificate along with their dispatch documents to facilitate quick clearance of the material.

The test certificate shall bear the following information:

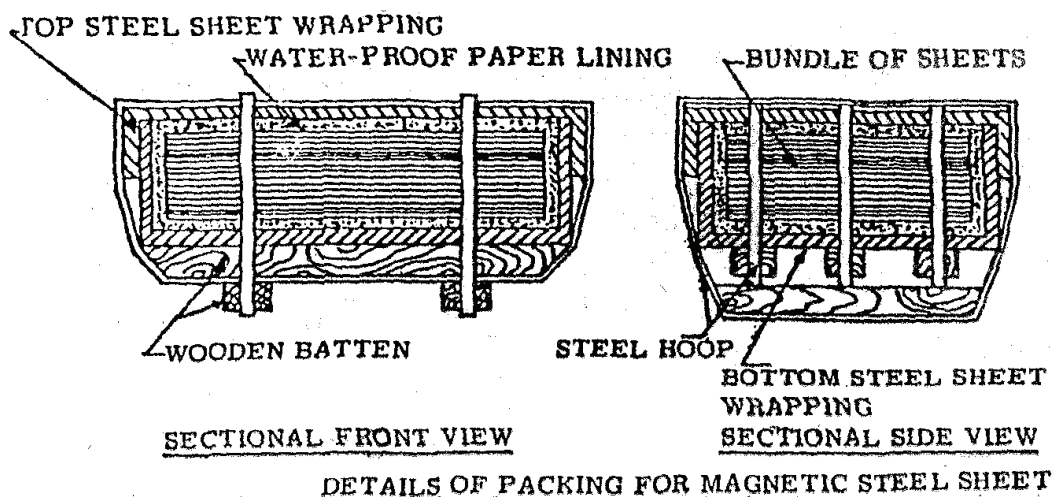
AA 101 15, Rev 09/IS:513 Gr:D/DIN 1623 Gr: RRSt 13.03 m,
BHEL Order No,
Melt No,
Size and Quantity,
Results of Chemical analysis and Mechanical tests,
Supplier's name,
Identification No
TC No,
Signature of Competent authority, etc..

14.0 PACKING :

14.1 Packing:

Sheets and Coils shall be suitably packed in bundles to prevent corrosion and damage during transit.

Recommended packing for imported material shall be as shown below. However, other methods of packing is also acceptable if prior agreement of BHEL is obtained in writing by the manufacturer.

14.2 Sheets :Note:

- a) Water proof paper lining shall be preferably Volatile Corrosion Inhibitor (V.C.I.) Coated Paper with an additional polythene (100 micron) enveloped.
- b) Approximate weight of each bundle shall be 2 to 3 tonnes. Bundle weighing 2 metric tonnes is however preferred.

14.3 Coils:

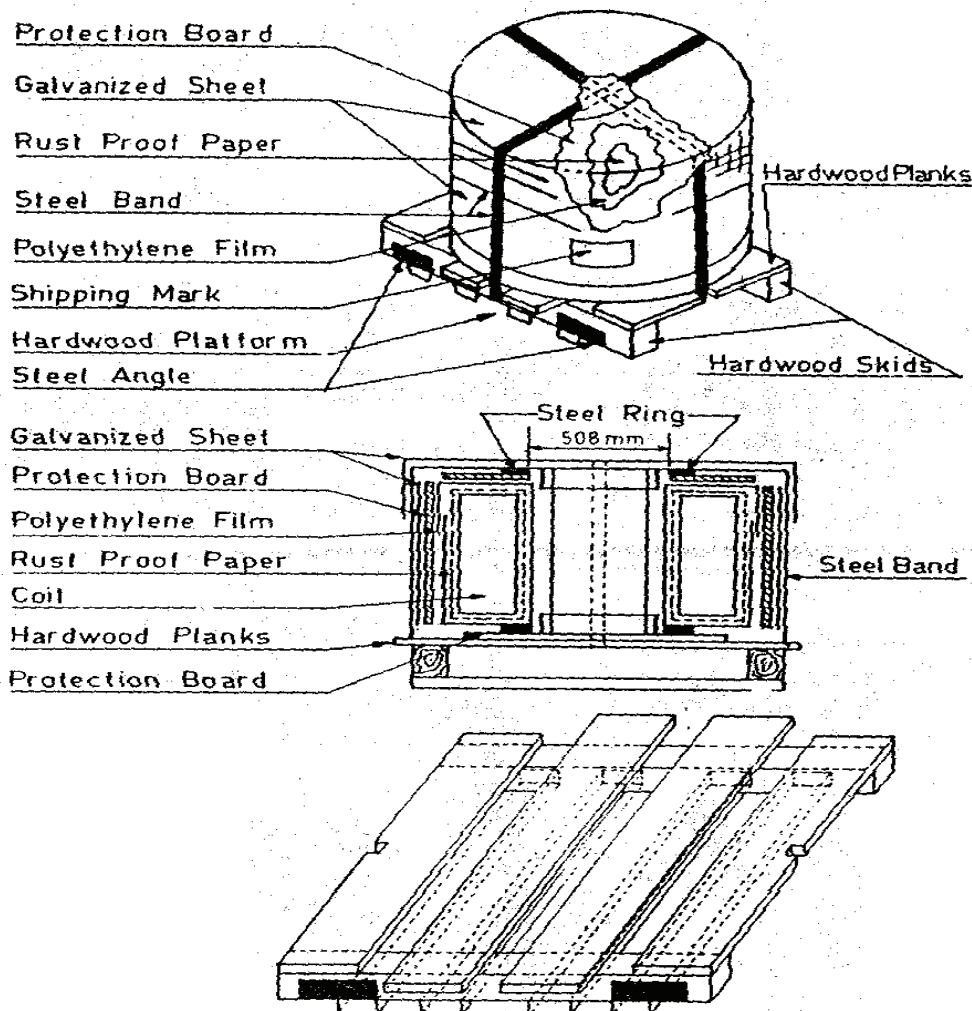
The material shall be supplied in coils of continuous strip. The nominal weight of each coil shall be 1800 - 2000 kg.

The nominal internal diameter of coil shall be 500 mm.

Sheet shall be protected to prevent damage and rusting during transit.

Sheet shall be vertically packed according to the instructions and drawings given below:

- a) An annular protection board shall be placed at either end of the coil.
- b) The coil should then be wrapped with waterproof anti-rust proof paper by lapping axially all around the circumference.
- c) The coil shall then be covered by polythylene sheet or anti-rust waterproof paper and the ends sealed properly.
- d) A galvanized sheet shall be wrapped on the outside of the coil and the top and bottom of the coils. Care shall be taken to ensure that the ends of the top and bottom of the coils extend sufficiently over the inside diameter of the coil.



- e) A galvanized sheet shall be wrapped on the inside of the coil. Care shall be taken that it overlaps sufficiently over the ends of the sheet mentioned in (d) above.
- f) Steel ring made from thick angle sheets shall be placed on the rim of the inner diameter at both ends of the coil. The rings shall be held at either ends at four points by steel bands.
- g) The coil should then be mounted on wooden skids held together by steel bands. Wooden skids must have cutouts to house the steel bands for tight fit and to avoid slippage.
- h) The packing shall ensure that there is no seepage of moisture and the coils reach BHEL in completely rust free condition. It shall be strong enough to withstand handling.
- i) Coils shall be sufficiently tight-wound to prevent collapse to an extent that would preclude their being mounted on a mandrel appropriate to the ordered internal diameter.
- j) Each package should indicate the , Sling Position, for lifting without damage. It is preferable to fix a suitable size of, 'Sheet Steel Angle', at the position where the Sling Rope is to be fitted to avoid slippage/damage/breakage of the wooden skid at four places.



CORPORATE PURCHASING SPECIFICATION

AA 101 15

Rev. No. 09

PAGE 7 OF 7

15.0 MARKING:

A metal label shall be securely attached to each bundle and shall bear the following information :


AA 101 15
BHEL Order No,
Supplier's Name and Identification No,
Melt No,
Size and Weight.

16.0 REFERRED STANDARDS (Latest Publications Including Amendments) :

- | | | |
|--------------|---------------|-----------------------|
| 1. IS : 513 | 2. IS : 1154 | 3. IS : 1501 |
| 4. IS : 1599 | 5. DIN : 1541 | 6. DIN : 1623, Part 1 |

GENERAL INFORMATION FOR CALCULATION (NOT TO FORM ACCEPTANCE CRITERION)

Tensile strength	:	270 - 410 N/mm ²
Yield strength	:	280 N/mm ² , max.
Elongation on 5.65 $\sqrt{S_0}$ gauge length	:	23 percent, min.

	<h1 style="margin: 0;">CORPORATE PURCHASING SPECIFICATION</h1>	<div style="border-bottom: 1px solid black; padding: 2px;">AA10131</div> <div style="border-bottom: 1px solid black; padding: 2px;">Rev No.05</div> <div style="padding: 2px;">PAGE 1 of 4</div>			
<h2 style="margin: 0;">COLD-REDUCED MILD STEEL SHIMS</h2>					
<p>1.0 GENERAL:</p> <p>This specification governs the quality requirements of cold Mild steel shims of thickness 0.05 to 0.49 mm, supplier in the form of sheets in coils.</p> <p>2.0 APPLICATION:</p> <p>For shims and other general engineering purposes.</p> <p>3.0 CONDITION OF DELIVERY:</p> <p>Cold-Reduced sheets in coils.</p> <p>4.0 COMPLIANCE WITH NATIONAL STANDARDS:</p> <p>There is no Indian standard covering this thickness of material. However, assistance has been derived from IS: 2385</p> <p>5.0 DIMENSIONS OF TOLERANCES:</p> <p>5.1 Sizes:</p> <p>Material shall be supplied to the dimensions specified on the order.</p> <p>5.2 Tolerances:</p> <p>The thickness of shim/sheet shall be comply with the following:</p> <p>5.2.1 Thickness:</p> <p>Average thickness of consignment: The mean of the thickness of each lot of 5 sheets selection from a package shall not deviate from the ordered nominal thickness by more than ± 2.5 percent.</p> <p>Average thickness of individual sheet: The average thickness of any of the 5 sample sheets selected from a package shall not deviate by more than ± 8.5 percent from the ordered nominal thickness.</p> <p>Variation with in a sheet: The thickness of an individual specimen shall not deviate by more than ± 4 percent from the average thickness of the sheet.</p> <p>5.2.2 Length and width:</p> <p style="margin-left: 20px;">+ 5 mm - 0 mm</p>					
Revisions: Ref: e-mail from HW dt.19.02.2009		APPROVED: INTERPLANT MATERIAL RATIONALISATION COMMITTEE – MRC(S&GPS)			
Rev No.05	Amd No.	Reaffirmed	Prepared	Issued	Dt. of 1 st Issue
Dt:20-02-2009	Dt:	Year:2020	HEP, Bhopal	Corp.R&D	August, 1976

CORPORATE PURCHASING SPECIFICATION



5.2.3 Shape:

Flatness:

Sheet shall be commercially flat when placed vertical and horizontal positions.

Sheets having from vertical position shall not show bowing of more than 5mm.

Edge Waviness:

Sheet lying on a flat surface shall not show edge waviness of more than 3 mm.

Squareness:

The maximum out of squareness shall not normally exceed 0.15 percent of the length. However, 5 percent of the sheet may exceed this limit to a maximum of 0.25%.

Camber:

Maximum camber on any edge shall be such that the deviation from the straight line does not exceed 0.15 percent on any side.

6.0 MANUFACTURE:

The method of manufacturing of the material shall be at the discretion of manufacturer.

7.0 TREATMENT:

The hot-rolled strip shall be pickled, cold – reduced with or without intermediate annealing and cleaned, annealed and finally temper-rolled, if necessary, to obtain the desired condition of the material and surface.

8.0 FREEDOM FROM DEFECTS:

The material shall be free from cracks, pitting, blisters, laminations and other surface defects.

9.0 CHEMICAL COMPOSITION

The melt analysis of steel and permissible variation in the composition of the material from the melt analysis shall be as follows:

Element	Percent, Max	Permissible Variation, Percent, Max.
Carbon	0.12	0.02
Manganese	0.60	0.03
Sulphur	0.050	0.005
Phosphorus	0.050	0.005

10.0 TEST SAMPLES:

Hardness Test:

One Sample shall be selected from each package.



CORPORATE PURCHASING SPECIFICATION

AA10131

Rev No.05

PAGE 3 of 4

11.0 HARDNESS (VICKERS):

When tested in accordance with IS: 1501, the test pieces shall have a Vicker's hardness in the range of 80 – 120 HV.

12.0 INSPECTION AT SUPPLIERS WORKS:

Whenever specified, tests and inspection are to be conducted in the presence of BHEL's representative.

BHEL's representative shall have free access at all times while the work on the contract is being performed, to all parts of the manufacturer's works. The manufacturer shall offer BHEL's representative all reasonable facilities without charge to satisfy the latter that the material is being furnished in accordance with this specification. The manufacturer shall prepare and provide necessary test specimens for testing to be carried out at his premises. If facilities do not exist at his works, the manufacturer shall make necessary arrangements for carrying out the prescribed tests elsewhere. The manufacturer shall notify BHEL's representative in advance about the readiness of the material for inspection and testing.

BHEL reserve the right to test the material at BHEL's works and the final acceptance of the material shall be based on these test results.

13.0 TEST CERTIFICATES:

Three copies of test certificates shall be supplied unless otherwise stated on the order.

In addition, the supplier shall ensure to enclose one copy of the test certificate along with their despatch documents to facilitate quick clearance of the material.

The test certificate shall bear the following information:

BHEL References:

AA10131: Rev.No. 05

BHEL Order No.

Supplier's Reference:

Name:

Identification No.

Melt No.

Process of manufacture.

Results of tests:

Dimensional inspection

Results of chemical analysis and mechanical tests.

14.0 PACKING AND MARKING:

14.1 PACKING:

The material shall be supplied in coils of continuous strip. The nominal weight of each coil shall be 1800 – 2000kg. The nominal internal diameter of coil shall be 500mm. Sheet shall be protected to prevent damage and rusting during transit.

Sheet shall be packed in line with IS: 2385.

CORPORATE PURCHASING SPECIFICATION



14.2 MARKING:

A metal label shall be securely attached to each bundle and shall be marked with the following.

AA10131: COLD-REDUCED MILD STEEL SHIMS

BHEL Order No.

Consignment / Identification No.

Weight, Size and Thickness

Supplier's Name and Grade

Melt No.

Packet/ Bundle No.

15.0 REJECTION AND REPLACEMENT:

If the material does not comply with the requirements of this specification during receipt inspection at BHEL or any defect is found during the course of further processing, such material shall be rejected notwithstanding any previous certification of satisfactory testing and/or inspection.

The manufacturer shall undertake to replace the rejected material of his own cost and the rejected material shall be taken back by the supplier's after fulfilling the commercial terms and conditions

16.0 REFERRED STANDARDS:

The following is the list of the latest standards, as published by the respective issuing bodies, referred to in this specification.

1) IS: 228

2) IS: 1501

3) IS: 2385