

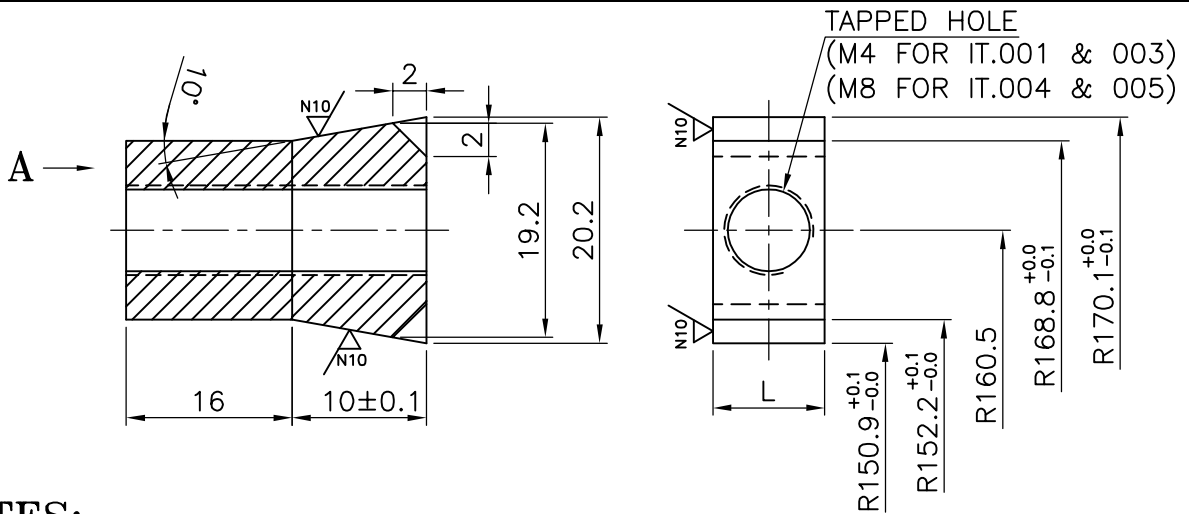
THE INFORMATION ON THIS DOCUMENT IS THE PROPERTY OF BHARAT HEAVY ELECTRICALS LIMITED.

FIRST ANGLE PROJECTION

(ALL DIMENSIONS ARE IN mm)

81/98


4/HEP-TXM20500		REV.	DATE	ALTERED	ADDITIONAL INFORMATION 4TWD.096.173 (ALT.-1)
ITEM	DATE			CHECKED	
				APPROVED	
ZONE		ZONE		STATUS OF DRAWING	
				DISTRIBUTION TME-1, TXM-3 OF PRINTS TNX-1	




NOTES:-

- | | | |
|---|---|-------------------------------|
| 1. <u>REMOVE ALL SHARP EDGES.</u> | } | ITEM 3. L=8±0.2xM4 (27 GMS.) |
| 2. <u>MATERIAL:- STEEL TO IS:2062'2011 GR.E250 BR (KILLED) OR LATEST VERSION.</u> | | ITEM 4. L=12±0.2xM8 (40 GMS.) |
| | | ITEM 5. L=15±0.2xM8 (50 GMS.) |
| 3. <u>FIRM'S IDENTIFICATION MARK TO BE PUNCHED AT LOCATION A.</u> | | |
| 4. <u>MATERIAL TO BE AS PER IS.6094'81 (FP) ZN. PLATED (BRAND-LPS, TVS, GWK & PRECISION).</u> | | |

020	SEE NOTE-4	006	HEX. SOC. SET SCRU M8x25				KG.	0.004
010	SEE NOTE-2	005	BALANCE WEIGHT				KG.	0.050
010	SEE NOTE-2	004	BALANCE WEIGHT				KG.	0.040
005	SEE NOTE-2	003	BALANCE WEIGHT				KG.	0.027
010	SEE NOTE-4	002	HEX. SOC. SET SCRU M4x25				KG.	0.002
005	SEE NOTE-2	001	BALANCE WEIGHT				KG.	0.020
59 64 65	REMARKS	75 25 27 29	DESCRIPTION	58	59 34	45 55 56	UNIT	58 65
VAR00		ITEM NO.		STD	MATL. CODE	46 54		QTY.
28 → CARD TYPE-3			28 → CARD TYPE-1		28 → CARD TYPE-2			

	BHARAT HEAVY ELECTRICALS LTD. BHOPAL		NAME	SIGN	DATE	NO. OF VAR.
		DRN.	BHAGAT	<i>Bhagat</i>	05.11.20	
		CHD.	ABHIJIT	<i>Abhi</i>	05.11.20	
		APPD.	ABHIJIT	<i>Abhi</i>	05.11.20	

DEPT.	TME	UNTOL. DIMS. GR. 'M' TM20079		SCALE NTS	WEIGHT (K.G.)	REF. TO ASSY. DRG.	ITEM NO.	NO. OF ITEM
CODE	405					1 445 45 64 053	010	006
TITLE <u>BALANCE WEIGHT</u> <u>6FRA-6068</u>						DRAWING NO.		REV.
						4 445 45 64 063		00
						SHT. NO.	NO. OF SHT.	
						01	01	

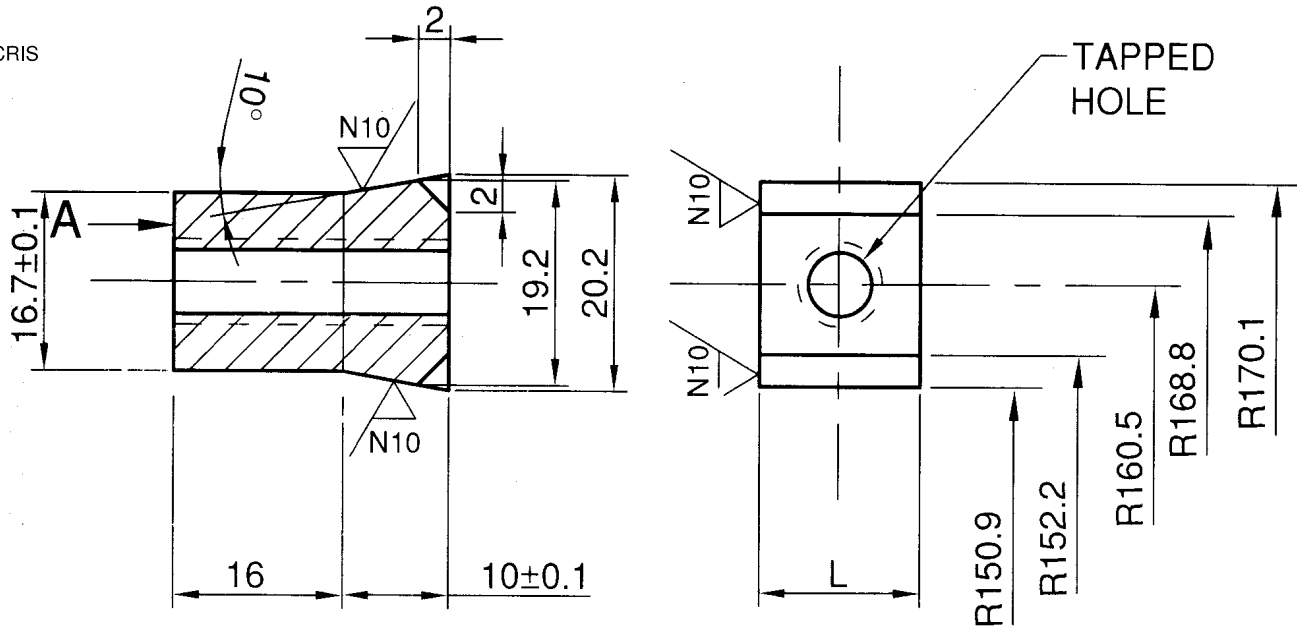
SIZE A4

Signature Not

Version: 1.0 / 2024/HEP-TXM20500

Digitally signed by
SUPRIYA GUPTA
Date: 2021.07.23
12:41:56 IST
Reason: IREPS
Document
Location: IREPS-CRIS

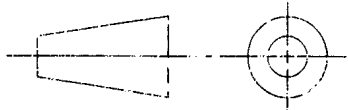
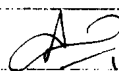
82/98



REF. 1 = L=6±0.2 x M4 (20 gms.)
REF. 3 = L=8±0.2 x M4 (27 gms.)
REF. 4 = L=12±0.2 x M8 (40 gms.)
REF. 5 = L= 15±0.2 x M8 (50gms.)

NOTE

1. REMOVE ALL SHARP EDGES. **IS: 2062'2011 Gr. E 250 BR(KILLED)**
2. MATERIAL : STEEL TO **IS:2062'92 Gr. Fe 410 WB- OR LATEST VERSION**
3. FIRM'S IDENTIFICATION MARK TO BE PUNCHED AT LOCATION A.
4. MATERIAL TO BE SUPPLIED ALONG WITH REF. 2 TO **IS:6094'81 (FP) ZN.PLATED (BRAND-LPS,TVS,GKW & PRECISION).**
5. STOCKING C&D. NO.5720/209

5720/ 214	5	-	BALANCE WEIGHT	10 NOS.	SEE NCTE 2	50 Gms.	
5720/ 213	4	-	BALANCE WEIGHT	10 NOS.	SEE NOTE 2	40 Gms.	
5720/ 212	3	-	BALANCE WEIGHT	5 NOS.	SEE NOTE 2	27 Gms.	
-	2	-	HEX.SOCKET SET SCREW, L=25	30 NOS.	SEE NOTE 4		
5720/ 211	1	-	BALANCE WEIGHT	5 NOS.	SEE NOTE 2	20 Gms.	
C&D. NO.	REF.	PART DRG. NO.	DESCRIPTION	QTY./ TM.	MATL.	SPECN	WT. OF EACH
	DATE	NAME	TRACTION MOTOR	CHITTARANJAN			
DGN.			TYPE-6FRA 6068	LO COMCTIVE WORKS			
DRN.				WEST BENGAL, INDIA			
TRD.							
CKD.	19.12.13	Chokh	BALANCE				
COMP	19.12.13	Ah	WEIGHT				
SCALE 1:1 NTS.				APPROVED			1
REF.4TWD 096.044			(SCHEME-II) ROTOR	REF.4TWD 096.173			ALTERAT