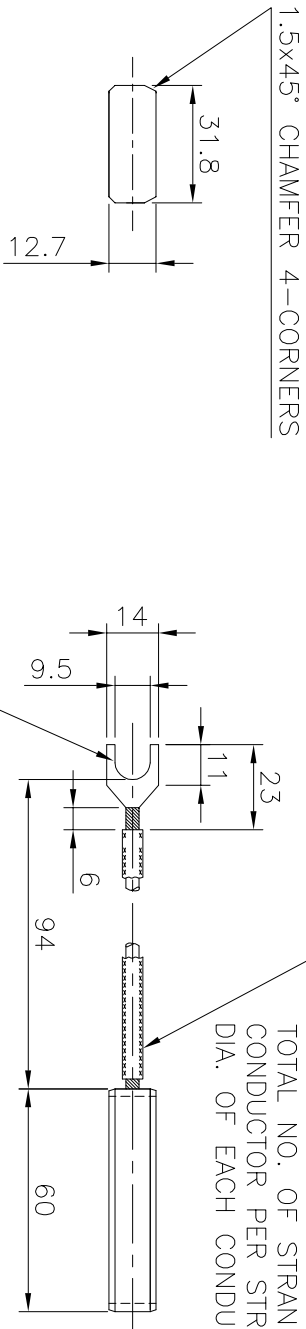
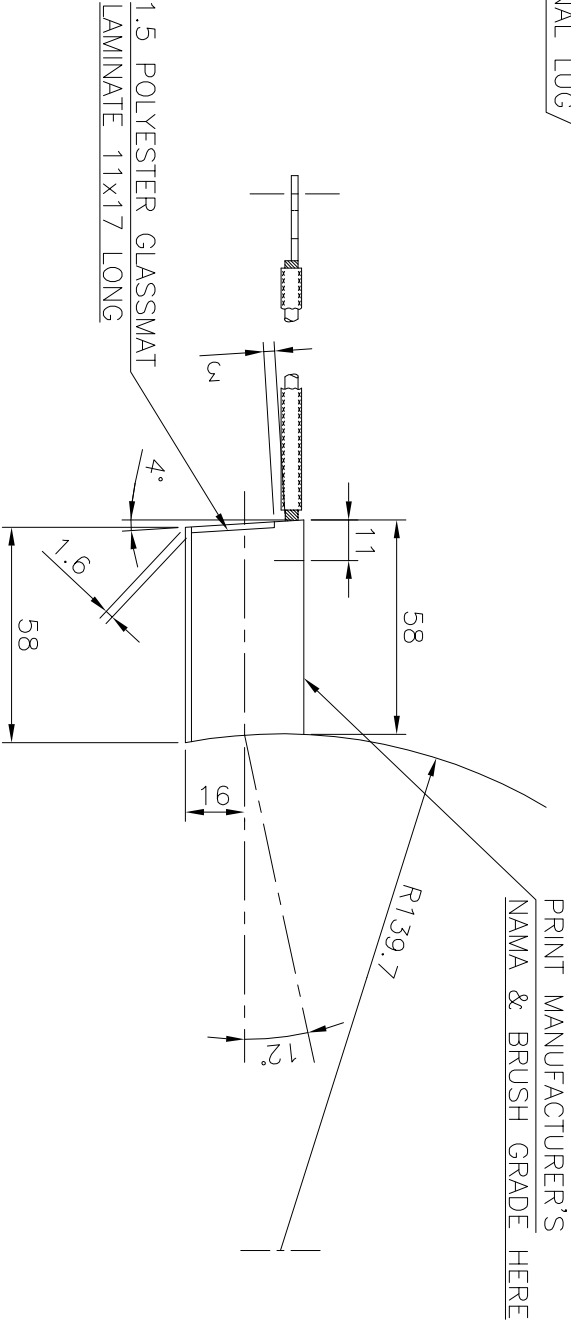


102 92 02 034 3

NO. DRG.



- NOTES:-**
- BRUSH MUST BE CODE DATED AS PER NEMA STANDARDS.
 - OPERATING CONDITIONS:
 - CURRENT DENSITY OF BRUSH:15 AMP./CM²
 - PERIPHERAL SPEED:13.2 M/Sec.
 - CARBON BRUSH SHOULD BE OF METAL GRAPHITE.
 - CARBON BRUSH GRADE SHALL BE MC80Z3 OF M/S MERSEN INDIA OR M15E OF M/S ASSAM CARBON.



THE INFORMATION ON THIS DOCUMENT IS THE PROPERTY OF BHARAT HEAVY ELECTRICALS LIMITED
IT MUST NOT BE USED DIRECTLY OR INDIRECTLY IN ANY WAY DETRIMENTAL TO THE INTEREST OF THE COMPANY

REF. DRG. NO.		SIGN. & DATE		INVENTORY NO.	
REV.	DATE	ALTERED	VK	REV.	DATE
06	27.2.21	CHECKED AT	AT	03	16.6.20
		APPROVED AT	AT		
DIMNS. 9.5, 14, 23, 11 WERE 6.5, 10.1, 22 & 10. DIMN. 94 WAS 89.				NOTE 3 MODIFIED. IN BOM, FOR IT. 001 & 002 MATL. SPEC. ADDED.	
REF. DRG. NO.		SIGN. & DATE		INVENTORY NO.	
REV.	DATE	ALTERED	SDB	REV.	DATE
05	15.2.21	CHECKED AT	AT	02	04.6.20
		APPROVED AT	AT		
NOTE-2 MODIFIED & NOTE-3 ADDED. DIM. 58 ADDED.				IN BOM ITEM 002 DELETED. DIM. 12.7 WAS 15.7 NOTE 2 MODIFIED & NOTES 3 & 4 DELETED.	
REF. DRG. NO.		SIGN. & DATE		INVENTORY NO.	
REV.	DATE	ALTERED	VK	REV.	DATE
03	16.6.20	CHECKED AT	AT	02	04.6.20
		APPROVED AT	AT		
NOTE 3 MODIFIED. IN BOM, FOR IT. 001 & 002 MATL. SPEC. ADDED.				IN BOM ITEM 002 ADDED. DIM. 15.7 WAS 12.7 AND DIM. 9.7 ADDED. NOTE 3 MODIFIED. IN BOM, FOR IT. 001 & 002 MATL. SPEC. ADDED.	

SEE NOTES	001	CARBON BRUSH	FOR MAIN M/C & COMPANION	GR:MC80Z3 OF M/S MERSEN INDIA	UNIT WT.	NO. OF
REMARKS	VAR. NO.	ITEM NO.	DESCRIPTION	DRAWING NO.	MATL. CODE	UNIT WT.

ADDITIONAL INFORMATION		TRACTION ALTERNATOR	
STATUS OF DRAWING		TA9906AZ	
DISTRIBUTION OF PRINTS			
TAM - 3 TME - 1			
TNX - 1			

TYPE OF PRODUCT OR NAME OF CUSTOMER/PROJECT		BHARAT HEAVY ELECTRICALS LTD. BHOPAL	
DEPT TME		SCALE NTS	
UNTOL.DIMS. GR. TM20079		WEIGHT (K.G.)	
CODE 405		REF. TO ASSY. DRG.	
TITLE CARBON BRUSH		DRAWING NO. 3 430 20 76 201	
		REV 06	

NAME	SIGN	DATE	NO. OF
S.D.B.		05.05.20	VAR
A.T.		05.05.20	
A.T.		05.05.20	